

C55 University of Chester

Cycle years: 2010 - 2015

Cycle Reference Point: End of Cycle

Applicant coverage: UK domiciled

Reporting groups: Sex, POLAR3, ethnic group

Applicant statistics: June deadline applicants, placed June deadline applicants, all placed applicants, June deadline applicants per 10,000 population, placed June deadline applicants per 10,000 population, all placed applicants per 10,000 population

Application statistics: June deadline applications, offers, offer rate, average offer rate, percentage point difference between offer rate and average offer rate, contribution of group to the average offer rate

Non-disclosure controls: To avoid the disclosure of information about any individual the following measures are taken

- Applicants, placed applicants, applications and offers are rounded to the nearest 5.
- Applicants/placed applicants per 10,000 population figures are reported as 0 if the applicant/placed applicant figures are rounded to 0.
- All statistics related to the offer rate are not reported when the number of applications for a group is less than 10. The percentage point difference between the offer rate and the average offer rate is not reported when the number of applications for a group is less than 50.
- Offer rates are reported as 0% if there are fewer than 5 offers, and 100% if the number of offers is within 5 of the number of applications. When the offer rate is reported as 0% or 100%, it is reported in italics.

Contents:

18 year old applicants:	P.1
18 year old applications:	P.2
18 year old applicants by sex:	P.3
18 year old applications by sex:	P.4
18 year old applicants by POLAR3 quintile:	P.7
18 year old applications by POLAR3 quintile:	P.8
18 year old applicants by ethnic group:	P.11
18 year old applications by ethnic group:	P.12
Applicants (all ages):	P.15
Applications (all ages):	P.16
Applicants (all ages) by sex:	P.17
Applications (all ages) by sex:	P.18
Applicants (all ages) by POLAR3 quintile:	P.19
Applications (all ages) by POLAR3 quintile:	P.20
Applicants (all ages) by ethnic group:	P.21
Applications (all ages) by ethnic group:	P.22

P.1 18 year old applicants

Statistic	2010	2011	2012	2013	2014	2015
June deadline applicants	11,030	13,300	11,990	13,000	13,820	12,565
Placed June deadline applicants	1,465	1,595	1,595	1,610	1,675	1,605
All placed applicants	1,520	1,610	1,665	1,755	1,835	1,820
June deadline applicants per 10,000 population	139.7	172.7	155.0	170.8	183.5	164.0
Placed June deadline applicants per 10,000	18.5	20.7	20.6	21.2	22.3	21.0
All placed applicants per 10,000 population	19.3	20.9	21.5	23.1	24.4	23.8

P.2 18 year old applications

Statistic	2010	2011	2012	2013	2014	2015
June deadline applications	11,795	14,055	12,555	13,600	14,430	13,140
Offers	8,670	9,110	9,830	10,430	11,335	10,955
Offer rate	73.5%	64.8%	78.3%	76.7%	78.6%	83.4%

P.3 18 year old applicants by sex

Statistic	Sex	2010	2011	2012	2013	2014	2015
June deadline applicants	Men	3,475	4,530	3,950	4,290	4,860	4,290
	Women	7,555	8,775	8,040	8,710	8,960	8,270
Placed June deadline applicants	Men	470	555	545	580	575	535
	Women	990	1,040	1,050	1,035	1,105	1,075
All placed applicants	Men	495	560	565	620	645	600
	Women	1,025	1,050	1,100	1,135	1,195	1,220
June deadline applicants per 10,000 population	Men	86.5	115.1	99.6	109.9	125.5	109.3
	Women	194.8	233.0	213.3	235.0	244.8	221.3
Placed June deadline applicants per 10,000 population	Men	11.8	14.1	13.8	14.8	14.8	13.6
	Women	25.5	27.6	27.8	27.9	30.2	28.7
All placed applicants per 10,000 population	Men	12.3	14.3	14.2	15.9	16.6	15.3
	Women	26.4	27.9	29.1	30.6	32.6	32.7

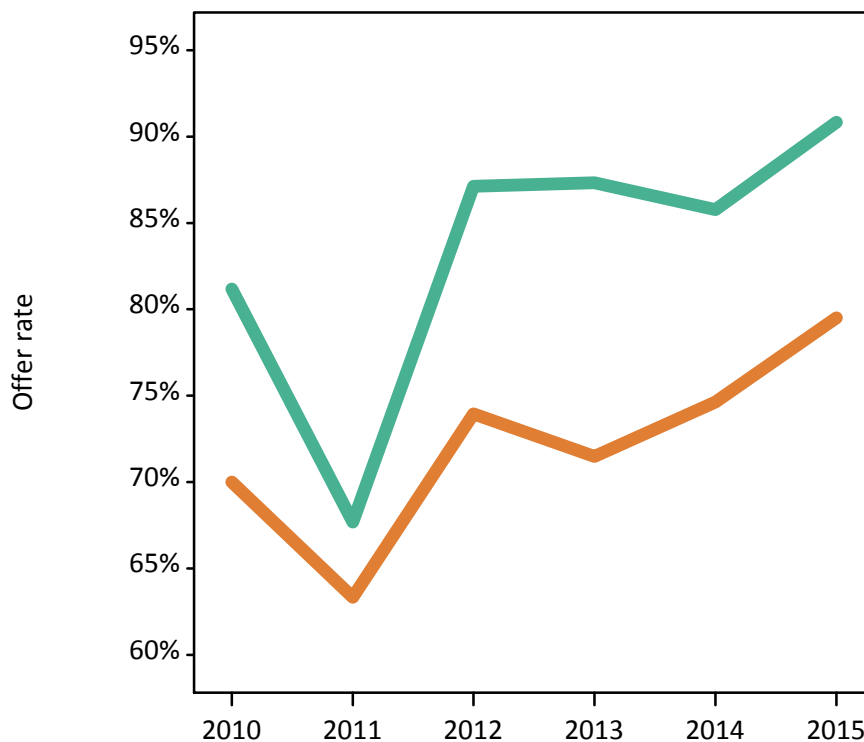
P.4 18 year old applications by sex

Statistic	Sex	2010	2011	2012	2013	2014	2015
June deadline applications	Men	3,715	4,785	4,135	4,495	5,070	4,480
	Women	8,080	9,270	8,420	9,105	9,360	8,660
Offers	Men	3,015	3,240	3,600	3,925	4,350	4,070
	Women	5,655	5,870	6,230	6,505	6,990	6,885
Offer rate	Men	81.2%	67.7%	87.1%	87.3%	85.8%	90.8%
	Women	70.0%	63.3%	73.9%	71.5%	74.6%	79.5%
Average offer rate	Men	81.5%	69.8%	87.7%	88.0%	86.5%	91.3%
	Women	69.9%	62.3%	73.7%	71.2%	74.3%	79.3%
Percentage point difference between offer rate and average offer rate	Men	-0.3	-2.1	-0.6	-0.6	-0.7	-0.5
	Women	0.1	1.1	0.3	0.3	0.4	0.3
Contribution of group to the average offer rate	Men	0.508	0.525	0.515	0.524	0.539	0.539
	Women	0.774	0.755	0.762	0.765	0.750	0.761

P.5 18 year old offer rate by sex

Note: The line for a group is not plotted when that group made fewer than 10 applications in any of the years from 2010-2015.

Men
Women



P.6 Percentage point difference between 18 year old offer rate and average offer rate by sex

Note: The line for a group is not plotted when that group made fewer than 50 applications in any of the years from 2010-2015.

Men
Women



P.7 18 year old applicants by POLAR3 quintile

Statistic	POLAR3 quintile	2010	2011	2012	2013	2014	2015
June deadline applicants	Quintile 1	1,755	1,960	1,865	2,030	2,345	2,100
	Quintile 2	1,950	2,355	2,240	2,515	2,600	2,465
	Quintile 3	2,235	2,650	2,450	2,585	2,730	2,680
	Quintile 4	2,545	3,150	2,735	3,000	3,085	2,685
	Quintile 5	2,530	3,160	2,685	2,855	3,035	2,610
Placed June deadline applicants	Quintile 1	255	260	230	260	290	285
	Quintile 2	265	270	315	310	340	315
	Quintile 3	265	310	365	315	335	335
	Quintile 4	330	370	335	350	360	370
	Quintile 5	345	380	340	370	350	300
All placed applicants	Quintile 1	260	265	245	280	310	305
	Quintile 2	280	275	330	330	365	355
	Quintile 3	275	315	380	340	365	380
	Quintile 4	340	375	350	390	400	425
	Quintile 5	365	385	355	405	385	350
June deadline applicants per 10,000 population	Quintile 1	118.7	136.5	131.0	145.5	168.5	150.0
	Quintile 2	126.8	156.8	149.5	170.5	177.6	166.0
	Quintile 3	140.4	172.3	158.5	169.6	181.4	174.6
	Quintile 4	159.7	201.1	172.3	191.7	200.3	171.5
	Quintile 5	149.3	191.0	159.7	172.7	186.1	155.9
Placed June deadline applicants per 10,000 population	Quintile 1	17.2	18.2	16.3	18.7	20.7	20.2
	Quintile 2	17.4	18.0	21.1	21.1	23.3	21.3
	Quintile 3	16.6	20.1	23.7	20.7	22.3	21.8
	Quintile 4	20.8	23.7	21.2	22.4	23.2	23.6
	Quintile 5	20.3	23.0	20.4	22.5	21.3	17.9
All placed applicants per 10,000 population	Quintile 1	17.6	18.3	17.1	20.2	22.2	21.8
	Quintile 2	18.3	18.2	22.1	22.5	24.9	24.0
	Quintile 3	17.2	20.4	24.7	22.4	24.4	24.7
	Quintile 4	21.2	23.9	22.1	24.9	26.0	27.2
	Quintile 5	21.5	23.3	21.1	24.6	23.7	20.9

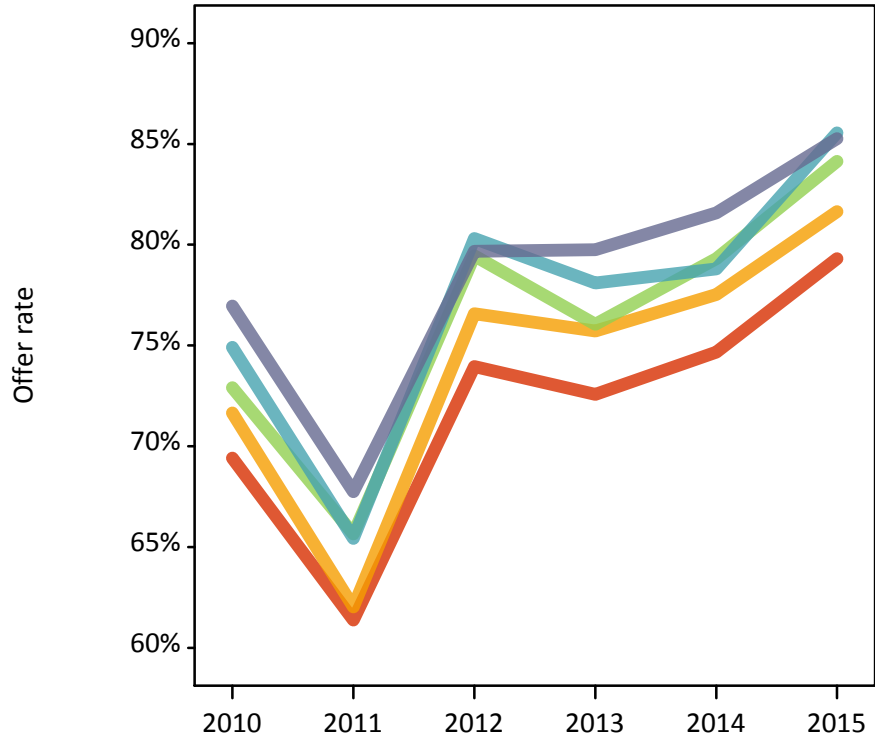
P.8 18 year old applications by POLAR3 quintile

Statistic	POLAR3 quintile	2010	2011	2012	2013	2014	2015
June deadline applications	Quintile 1	1,900	2,085	1,980	2,130	2,470	2,205
	Quintile 2	2,105	2,490	2,360	2,625	2,715	2,590
	Quintile 3	2,370	2,785	2,565	2,700	2,840	2,800
	Quintile 4	2,705	3,350	2,860	3,120	3,225	2,815
	Quintile 5	2,695	3,315	2,770	3,005	3,155	2,710
Offers	Quintile 1	1,320	1,280	1,465	1,545	1,845	1,750
	Quintile 2	1,510	1,545	1,810	1,990	2,105	2,115
	Quintile 3	1,730	1,830	2,040	2,050	2,255	2,355
	Quintile 4	2,025	2,195	2,295	2,435	2,540	2,410
	Quintile 5	2,075	2,245	2,205	2,395	2,575	2,310
Offer rate	Quintile 1	69.4%	61.4%	74.0%	72.6%	74.7%	79.3%
	Quintile 2	71.7%	62.0%	76.6%	75.7%	77.5%	81.6%
	Quintile 3	72.9%	65.6%	79.5%	76.1%	79.3%	84.1%
	Quintile 4	74.9%	65.4%	80.3%	78.1%	78.8%	85.6%
	Quintile 5	77.0%	67.7%	79.7%	79.8%	81.6%	85.3%
Average offer rate	Quintile 1	70.7%	60.7%	75.5%	73.5%	76.1%	80.0%
	Quintile 2	73.1%	64.2%	76.3%	75.9%	77.6%	82.4%
	Quintile 3	72.2%	65.8%	79.6%	76.0%	79.0%	83.5%
	Quintile 4	74.7%	65.5%	79.9%	77.9%	78.8%	84.5%
	Quintile 5	75.8%	66.3%	79.1%	79.1%	80.7%	85.7%
Percentage point difference between offer rate and average offer rate	Quintile 1	-1.3	0.6	-1.5	-0.9	-1.4	-0.7
	Quintile 2	-1.4	-2.2	0.3	-0.2	-0.1	-0.8
	Quintile 3	0.7	-0.2	-0.2	0.0	0.3	0.6
	Quintile 4	0.2	-0.1	0.4	0.2	0.0	1.0
	Quintile 5	1.1	1.5	0.6	0.6	0.9	-0.4
Contribution of group to the average offer rate	Quintile 1	0.235	0.220	0.229	0.216	0.240	0.235
	Quintile 2	0.247	0.231	0.243	0.245	0.237	0.252
	Quintile 3	0.265	0.252	0.260	0.245	0.249	0.272
	Quintile 4	0.288	0.284	0.285	0.277	0.276	0.278
	Quintile 5	0.302	0.298	0.278	0.282	0.282	0.284

P.9 18 year old offer rate by POLAR3 quintile

Note: The line for a group is not plotted when that group made fewer than 10 applications in any of the years from 2010-2015.

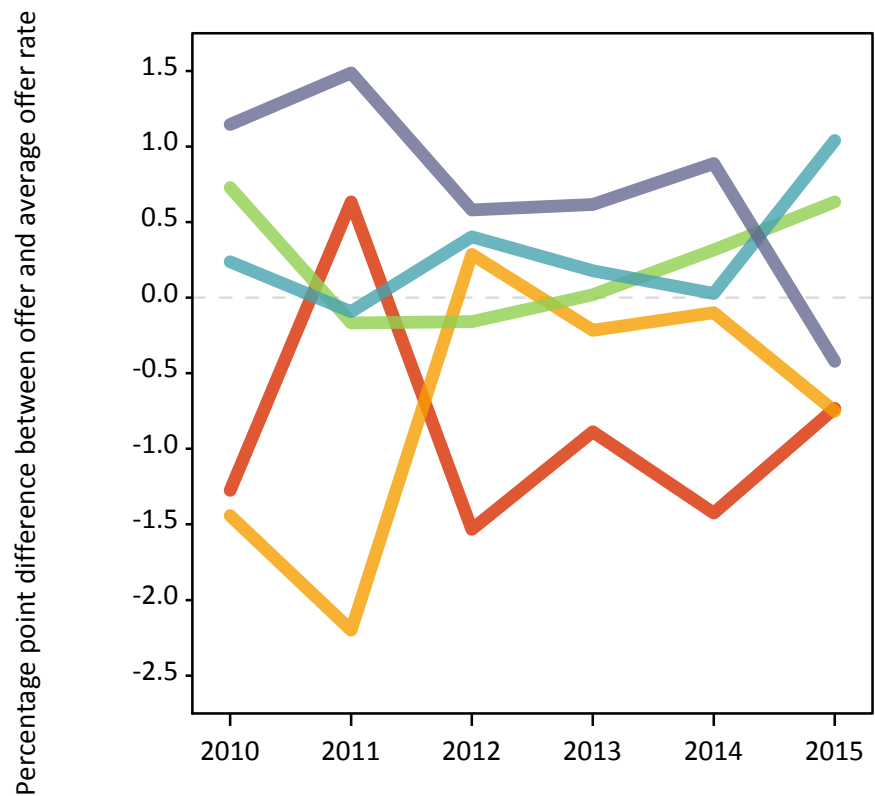
- Quintile 1
- Quintile 2
- Quintile 3
- Quintile 4
- Quintile 5



P.10 Percentage point difference between 18 year old offer rate and average offer rate by POLAR3 quintile

Note: The line for a group is not plotted when that group made fewer than 50 applications in any of the years from 2010-2015.

- Quintile 1
- Quintile 2
- Quintile 3
- Quintile 4
- Quintile 5



P.11 18 year old applicants by ethnic group

Statistic	Ethnic group	2010	2011	2012	2013	2014	2015
June deadline applicants	Asian	205	365	380	475	500	420
	Black	150	265	280	365	380	275
	Mixed	250	330	295	340	350	350
	White	10,365	12,275	10,985	11,740	12,500	11,440
	Other	25	40	35	55	55	45
Placed June deadline applicants	Asian	15	20	30	40	45	25
	Black	10	20	25	35	20	20
	Mixed	30	25	35	35	30	35
	White	1,400	1,530	1,500	1,490	1,575	1,520
	Other	0	0	5	5	5	5
All placed applicants	Asian	15	20	30	45	55	30
	Black	10	20	25	40	25	20
	Mixed	30	25	35	40	30	40
	White	1,455	1,545	1,565	1,620	1,715	1,715
	Other	5	0	5	10	5	10
June deadline applicants per 10,000 population	Asian	33.3	57.8	59.0	71.9	74.0	59.6
	Black	57.3	96.6	99.1	122.6	125.7	86.7
	Mixed	107.0	135.4	113.3	125.7	121.3	113.2
	White	154.5	189.6	170.1	186.5	202.6	183.6
	Other	35.1	50.6	40.7	59.6	61.2	47.8
Placed June deadline applicants per 10,000 population	Asian	2.3	3.2	4.6	6.1	6.5	3.7
	Black	4.2	6.6	8.9	11.8	6.9	5.7
	Mixed	12.5	9.9	13.4	13.7	9.7	11.0
	White	20.9	23.6	23.2	23.7	25.6	24.4
	Other	0.0	0.0	3.4	7.7	5.4	6.2
All placed applicants per 10,000 population	Asian	2.3	3.2	4.8	6.7	7.8	4.2
	Black	4.6	6.6	9.2	13.1	8.6	6.9
	Mixed	13.8	10.3	13.8	15.2	10.4	13.3
	White	21.7	23.8	24.3	25.7	27.8	27.5
	Other	3.9	0.0	3.4	8.8	7.5	9.3

P.12 18 year old applications by ethnic group

Statistic	Ethnic group	2010	2011	2012	2013	2014	2015
June deadline applications	Asian	210	375	390	485	510	425
	Black	155	265	285	370	385	275
	Mixed	255	340	305	345	355	370
	White	11,110	13,000	11,530	12,310	13,090	11,990
	Other	25	40	35	55	60	45
Offers	Asian	165	255	285	355	385	360
	Black	110	165	200	270	275	240
	Mixed	190	205	240	275	275	330
	White	8,155	8,440	9,060	9,460	10,330	9,965
	Other	20	25	30	45	40	40
Offer rate	Asian	77.4%	68.2%	73.2%	73.0%	75.7%	84.3%
	Black	72.1%	61.9%	69.8%	73.0%	71.1%	85.9%
	Mixed	75.1%	60.5%	79.5%	78.9%	78.2%	89.7%
	White	73.4%	64.9%	78.6%	76.8%	78.9%	83.1%
	Other	77.8%	58.5%	77.8%	85.5%	69.0%	84.8%
Average offer rate	Asian	77.2%	67.1%	79.0%	76.6%	79.6%	84.0%
	Black	75.8%	65.1%	80.1%	80.4%	80.3%	87.4%
	Mixed	77.2%	66.8%	81.7%	79.8%	82.9%	87.1%
	White	73.3%	64.7%	78.1%	76.5%	78.3%	83.1%
	Other	80.6%	64.0%	86.6%	83.1%	77.6%	90.2%
Percentage point difference between offer rate and average offer rate	Asian	0.2	1.1	-5.8	-3.6	-3.9	0.4
	Black	-3.7	-3.2	-10.3	-7.5	-9.3	-1.4
	Mixed	-2.1	-6.3	-2.2	-0.9	-4.6	2.6
	White	0.1	0.2	0.5	0.4	0.6	-0.0
	Other	N/A	N/A	N/A	2.4	-8.6	N/A
Contribution of group to the average offer rate	Asian	0.132	0.097	0.123	0.128	0.115	0.137
	Black	0.141	0.112	0.118	0.104	0.127	0.122
	Mixed	0.097	0.102	0.087	0.101	0.092	0.114
	White	0.949	0.933	0.927	0.915	0.917	0.923
	Other	0.136	0.103	0.109	0.057	0.072	0.069

P.13 18 year old offer rate by ethnic group

Note: The line for a group is not plotted when that group made fewer than 10 applications in any of the years from 2010-2015.

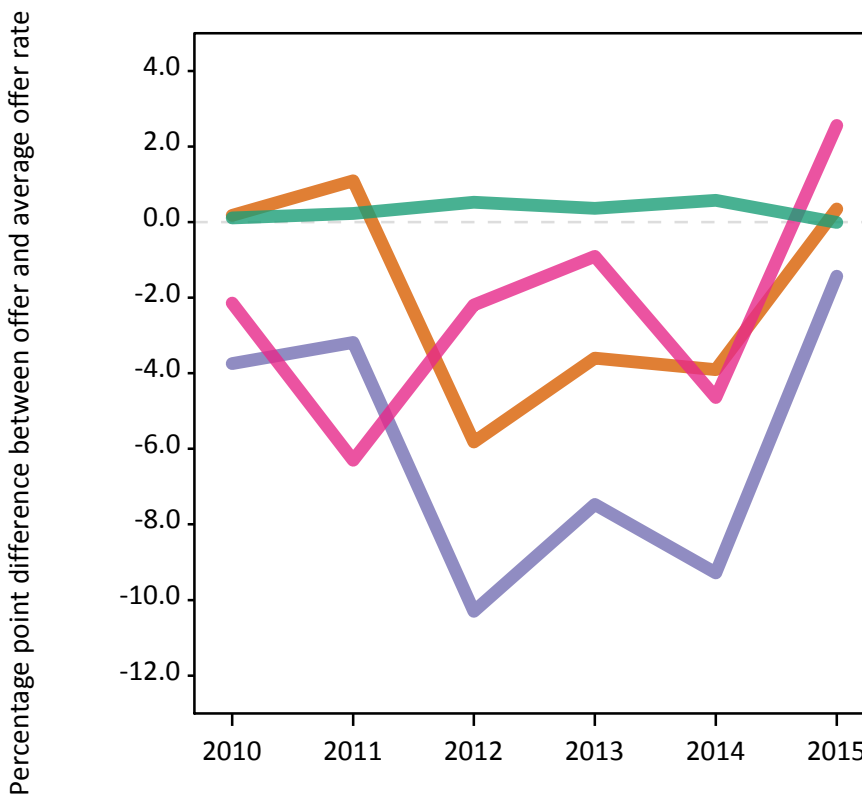
- Asian
- Black
- Mixed
- White
- Other



P.14 Percentage point difference between 18 year old offer rate and average offer rate by ethnic group

Note: The line for a group is not plotted when that group made fewer than 50 applications in any of the years from 2010-2015.

- Asian
- Black
- Mixed
- White
- Other



P.15 Applicants (all ages)

Statistic	2010	2011	2012	2013	2014	2015
June deadline applicants	18,230	22,145	19,585	21,895	23,150	20,535
Placed June deadline applicants	2,600	2,760	2,805	2,815	3,075	2,850
All placed applicants	2,745	2,805	2,970	3,085	3,425	3,305

P.16 Applications (all ages)

Statistic	2010	2011	2012	2013	2014	2015
June deadline applications	19,850	23,940	20,850	23,280	24,630	21,720
Offers	12,490	13,305	14,370	15,510	16,905	16,120
Offer rate	62.9%	55.6%	68.9%	66.6%	68.6%	74.2%

P.17 Applicants (all ages) by sex

Statistic	Sex	2010	2011	2012	2013	2014	2015
June deadline applicants	Men	5,805	7,520	6,385	7,080	7,900	6,805
	Women	12,425	14,625	13,200	14,810	15,250	13,730
Placed June deadline applicants	Men	805	950	945	1,000	1,040	905
	Women	1,795	1,810	1,865	1,815	2,040	1,945
All placed applicants	Men	870	965	1,005	1,085	1,190	1,065
	Women	1,875	1,840	1,965	2,000	2,235	2,235

P.18 Applications (all ages) by sex

Statistic	Sex	2010	2011	2012	2013	2014	2015
June deadline applications	Men	6,320	8,095	6,775	7,515	8,365	7,165
	Women	13,530	15,845	14,075	15,765	16,260	14,560
Offers	Men	4,475	4,905	5,410	5,990	6,630	6,075
	Women	8,015	8,400	8,960	9,525	10,275	10,040
Offer rate	Men	70.8%	60.6%	79.9%	79.7%	79.2%	84.8%
	Women	59.2%	53.0%	63.6%	60.4%	63.2%	69.0%

P.19 Applicants (all ages) by POLAR3 quintile

Statistic	POLAR3 quintile	2010	2011	2012	2013	2014	2015
June deadline applicants	Quintile 1	3,315	3,835	3,610	4,125	4,490	3,965
	Quintile 2	3,310	4,060	3,830	4,330	4,460	4,040
	Quintile 3	3,540	4,390	3,905	4,230	4,470	4,195
	Quintile 4	4,005	4,905	4,135	4,720	4,910	4,230
	Quintile 5	4,015	4,910	4,070	4,455	4,780	4,070
Placed June deadline applicants	Quintile 1	515	525	515	560	620	580
	Quintile 2	470	475	565	560	615	535
	Quintile 3	455	540	610	515	600	585
	Quintile 4	545	600	540	565	605	595
	Quintile 5	610	610	570	610	625	545
All placed applicants	Quintile 1	540	530	545	610	665	660
	Quintile 2	500	485	595	610	680	630
	Quintile 3	475	550	645	560	675	665
	Quintile 4	565	610	570	625	685	695
	Quintile 5	655	620	605	675	710	640

P.20 Applications (all ages) by POLAR3 quintile

Statistic	POLAR3 quintile	2010	2011	2012	2013	2014	2015
June deadline applications	Quintile 1	3,635	4,215	3,915	4,445	4,845	4,235
	Quintile 2	3,625	4,385	4,060	4,595	4,750	4,255
	Quintile 3	3,830	4,715	4,150	4,475	4,720	4,420
	Quintile 4	4,335	5,290	4,380	4,975	5,205	4,475
	Quintile 5	4,390	5,285	4,305	4,745	5,065	4,290
Offers	Quintile 1	2,100	2,140	2,485	2,660	3,055	2,890
	Quintile 2	2,190	2,295	2,685	2,975	3,200	3,075
	Quintile 3	2,430	2,635	2,940	2,980	3,260	3,345
	Quintile 4	2,825	3,075	3,120	3,460	3,625	3,430
	Quintile 5	2,915	3,130	3,115	3,410	3,730	3,340
Offer rate	Quintile 1	57.9%	50.8%	63.5%	59.8%	63.1%	68.3%
	Quintile 2	60.5%	52.4%	66.2%	64.7%	67.4%	72.2%
	Quintile 3	63.5%	55.9%	70.8%	66.6%	69.1%	75.7%
	Quintile 4	65.2%	58.1%	71.2%	69.6%	69.7%	76.7%
	Quintile 5	66.4%	59.3%	72.3%	71.8%	73.7%	77.8%

P.21 Applicants (all ages) by ethnic group

Statistic	Ethnic group	2010	2011	2012	2013	2014	2015
June deadline applicants	Asian	425	700	685	870	880	770
	Black	440	710	760	925	925	750
	Mixed	410	570	470	570	575	565
	White	16,835	20,015	17,545	19,360	20,590	18,255
	Other	60	85	85	105	115	120
Placed June deadline applicants	Asian	40	45	60	70	80	65
	Black	40	70	70	100	60	50
	Mixed	60	50	55	65	60	60
	White	2,450	2,580	2,605	2,565	2,860	2,650
	Other	5	10	10	10	10	15
All placed applicants	Asian	45	50	65	75	95	70
	Black	45	75	80	110	70	75
	Mixed	65	50	60	70	65	70
	White	2,570	2,615	2,755	2,805	3,165	3,045
	Other	5	10	10	10	15	20

P.22 Applications (all ages) by ethnic group

Statistic	Ethnic group	2010	2011	2012	2013	2014	2015
June deadline applications	Asian	450	725	700	895	905	780
	Black	455	740	795	950	945	770
	Mixed	435	600	495	590	595	590
	White	18,390	21,720	18,730	20,670	22,005	19,375
	Other	60	90	90	110	120	125
Offers	Asian	300	415	450	575	605	585
	Black	225	310	375	500	475	435
	Mixed	285	325	360	400	425	480
	White	11,605	12,175	13,100	13,905	15,285	14,470
	Other	40	45	55	75	75	85
Offer rate	Asian	66.1%	57.2%	64.2%	64.4%	66.7%	75.2%
	Black	49.4%	42.1%	47.0%	52.6%	50.1%	56.6%
	Mixed	65.0%	54.0%	72.4%	68.3%	72.0%	81.8%
	White	63.1%	56.1%	70.0%	67.3%	69.5%	74.7%
	Other	66.1%	51.1%	61.8%	69.4%	61.7%	70.7%

Technical Notes and Definitions

UCAS undergraduate scheme

Adjustment

Adjustment allows applicants who have met and exceeded the terms of their conditional firm offer to seek and find a place at another provider whilst keeping their place at their original firm choice provider.

Clearing

Clearing is a route for applicants that are not placed and holding no offers to find a place on courses with vacancies.

Cycle year

The UCAS application cycle which runs from September to October the following year. For example the 2015 cycle runs from September 2014 through to October 2015.

End of cycle

The point in the cycle to which the numbers in this report refer, and the point at which the cycle is closed such that no more applications or offers can be made, and no more applicants can be placed. Numbers reported at the end of cycle exclude information on a small number of applicants who cancelled during the cycle.

Extra

Applicants who are unsuccessful in obtaining an offer or decline all offers may be eligible to apply through Extra, where they can apply to one further course at a time. Extra operates from 25 February until early July. It provides applicants who are eligible the possibility of obtaining an offer before exam results are published and Clearing starts.

June 30 deadline

The deadline for main scheme applications. Applicants who apply after this date will go directly into Clearing.

Record of Prior Acceptance (RPA)

RPA is an acceptance route used when a provider informs UCAS of applicants it has accepted outside of the normal application process (e.g. individuals who have applied directly to the provider).

Reporting groups

Ethnic group

High level grouping of ethnic origin as declared by the applicant: 'White', 'Black', 'Asian', 'Mixed', 'Other', 'Unknown'. Applicants who declare themselves as 'Unknown' ethnic origin are not reported in these tables, but are included in the associated csv data file.

POLAR3 quintile

Developed by HEFCE, POLAR3 classifies small areas across the UK into five groups according to their level of young participation in Higher Education. Each of these groups represents around 20 per cent of young people and is ranked from Quintile 1 (areas with the lowest young participation rates, considered as the most disadvantaged) to Quintile 5 (highest young participation rates, considered most advantaged). POLAR3 is based on the participation rates of young people between 2005 and 2009 who entered Higher Education between 2005-06 and 2010-11, therefore is most suitable for applicants aged 19 and under. These groups are assigned using the postcode declared by the applicant at the time of their application. If a UK postcode is invalid, considered unsafe for measurement or there is no link to Census geography possible then the applicant is not assigned to a quintile. Applicants with no POLAR3 quintile are not reported.

Sex

Sex as declared by the applicant.

SIMD quintile

Scottish index of multiple deprivation (SIMD) for 2012 identifies small area concentrations of multiple deprivation across all of Scotland, providing a relative measure of deprivation amongst 6505 small areas (data zones) based on 7 socio-economic domains. These small areas are classified into five groups ranked from Quintile 1 (considered the most deprived) to Quintile 5 (considered least deprived), with equal populations in each quintile. Quintiles are assigned using the postcode declared by the applicant, applicants declaring invalid postcodes are classified as 'Not assigned' and are not reported.

SIMD is only defined for applicants domiciled in Scotland, therefore any applicants domiciled outside of Scotland cannot be assigned to an SIMD quintile and so are not reported for this measure.

SIMD is only reported for providers in Scotland. Application and entry rates by SIMD are reported in the 2015 End of Cycle Report and the 2016 cycle January deadline application rate report.

Statistics reported in the tables

All placed applicants

The number of applicants placed for entry into higher education at the provider through one of their choices, including any choices made through Extra, or via Adjustment, Clearing or RPA.

All placed applicants per 10,000 population

The number of total UK domiciled 18 year old placed applicants for entry into higher education at the provider divided by the number of UK 18 year olds in the population, multiplied by 10,000. This gives the number of 18 year olds, for every 10,000 in the population, that were placed at the provider through one of their choices, including any choices made through Extra, or via Adjustment, Clearing or RPA. It is an alternative way of expressing the entry rate to a provider. By referencing the underlying population this statistic shows how the number of placed applicants is changing in relation to the available pool of potential applicants and so gives the chance that somebody from the group will be placed at a provider.

This statistic is only reported for 18 year olds.

Average offer rate

The offer rate that you might expect if the predicted grades and subject choice of applicants were the only factors that influenced whether an applicant was made an offer by the provider. The average offer rate is calculated by dividing applicants according to their specific combination of grades (for A levels the best three predicted grades are used, for BTECs, International Baccalaureate and Scottish Highers and Advanced Highers, predicted grades along with any grades already achieved upon applying are used) and subject choice. For each combination the number of main scheme offers is divided by the number of main scheme applications, to give an overall offer rate. This is then multiplied by the number of applications made by the group for which the average offer rate is being calculated (for example POLAR3 quintile 1), to give an average number of offers for that group. These average number of offers are then added together across all combinations of predicted grade and subject and divided by the number of main scheme applications from the group to give the average offer rate.

The average offer rate does not attempt to control for any other factors that may play a part in the decision to make an offer, such as the subject of the qualifications studied, their relevance to a course, or the grade in each subject; higher numbers of A levels being studied; the exact profile of grades predicted; personal statements; teacher references; interviews; or any other criteria (such as work experience or portfolios) that may be part of the admissions decision.

This statistic is only reported for 18 year olds.

Contribution of group to the average offer rate

The way in which the average offer rate is defined means that the pattern of application and offers of a group (for example POLAR3 quintile 1) will always contribute, in part, to the average offer rate for that group. When this contribution is large, the average offer rate will mainly reflect the patterns for the group, meaning that the value of the average offer rate will be similar to the offer rate, the percentage point difference statistic will be small, and any real difference between the offer rate and what might be expected given the predicted grades and subject choices of the applicants will be difficult to detect.

Values of the contribution of group to the average offer rate range between 0 and 1. The closer the value is to 1 the greater the contribution a group makes to its own average offer rate.

This statistic is only reported for 18 year olds.

Placed June deadline applicants

An applicant who has been placed for entry into higher education at the provider through a June deadline application.

Placed June deadline applicants per 10,000 population

The number of UK domiciled 18 year old placed June deadline applicants at the provider divided by the number of UK 18 year olds in the population, multiplied by 10,000. This gives the number of 18 year olds, for every 10,000 in the population, that were placed at the provider through one of their June deadline applications. It is an alternative way of expressing the entry rate to a provider, but for placed June deadline applicants only. By referencing the underlying population this statistic shows how the number of placed June deadline applicants is changing in relation to the available pool of potential 18 year old applicants and so gives the chance that somebody from the group will be placed at a provider through a June deadline application.

This statistic is only reported for 18 year olds.

June deadline applications

An application (or choice) to a course in higher education to the provider that is made by the June 30 deadline. Each applicant can make up to five choices this way. The number of June deadline applications does not include choices made through the following routes: Clearing, Extra, Adjustment and RPAs. Applications made to October deadline courses received after the October deadline are not included in these statistics.

June deadline applicants

The number of applicants that made at least one application to the provider by the June 30 deadline.

June deadline applicants per 10,000 population

The number of UK domiciled 18 year old June deadline applicants to the provider divided by the number of UK 18 year olds in the population, multiplied by 10,000. This gives the number of 18 year olds, for every 10,000 in the population, who applied by the June 30 deadline. It is equivalent to the application rate. By referencing the underlying population this statistic shows how the number of June deadline applicants is changing in relation to the available pool of potential 18 year old applicants and so gives the chance that somebody from the group will apply to a provider by the June 30 deadline.

This statistic is only reported for 18 year olds.

Offers

An offer is defined as a provider's decision in response to an application to offer a place to an applicant, often subject to the applicant satisfying academic and/or other criteria, via a June deadline application (i.e. does not cover choices made through the following routes: Clearing, Extra, Adjustment and RPAs).

Offer rate

The number of offers made divided by the number of June deadline applications. This gives the proportion of all June deadline applications to the provider that received an offer.

Percentage point difference between offer rate and average offer rate

The offer rate minus the average offer rate.

The percentage point difference can be compared to the expected range of statistical variation resulting from the calculation of the average offer rate using the Average Offer Rate Lookup Table. Where the value of the percentage point difference lies outside of this range, the percentage point difference may be considered to represent a real difference between the offer rate and the average offer rate.

Other definitions

Age

This analysis uses country-specific age definitions that align with the cut off points for school and college cohorts within the different administrations of the UK. For England and Wales, ages are defined on the 31 August, for Northern Ireland on the 1 July and for Scotland on the 28 February the following year. Defining ages in this way matches the assignment of children to school cohorts. For applicants outside of the UK a cohort cut off of 31 August has been used.

Provider

A higher education provider - a university or college.

UK domiciled

Declared area of permanent residence within England, Northern Ireland, Scotland and Wales. Applicants from the Channel Islands and Isle of Man are not included.