

B78 University of Bristol

Cycle years: 2010 - 2015

Cycle Reference Point: End of Cycle

Applicant coverage: UK domiciled

Reporting groups: Sex, POLAR3, ethnic group

Applicant statistics: June deadline applicants, placed June deadline applicants, all placed applicants, June deadline applicants per 10,000 population, placed June deadline applicants per 10,000 population, all placed applicants per 10,000 population

Application statistics: June deadline applications, offers, offer rate, average offer rate, percentage point difference between offer rate and average offer rate, contribution of group to the average offer rate

Non-disclosure controls: To avoid the disclosure of information about any individual the following measures are taken

- Applicants, placed applicants, applications and offers are rounded to the nearest 5.
- Applicants/placed applicants per 10,000 population figures are reported as 0 if the applicant/placed applicant figures are rounded to 0.
- All statistics related to the offer rate are not reported when the number of applications for a group is less than 10. The percentage point difference between the offer rate and the average offer rate is not reported when the number of applications for a group is less than 50.
- Offer rates are reported as 0% if there are fewer than 5 offers, and 100% if the number of offers is within 5 of the number of applications. When the offer rate is reported as 0% or 100%, it is reported in italics.

Contents:

18 year old applicants:	P.1
18 year old applications:	P.2
18 year old applicants by sex:	P.3
18 year old applications by sex:	P.4
18 year old applicants by POLAR3 quintile:	P.7
18 year old applications by POLAR3 quintile:	P.8
18 year old applicants by ethnic group:	P.11
18 year old applications by ethnic group:	P.12
Applicants (all ages):	P.15
Applications (all ages):	P.16
Applicants (all ages) by sex:	P.17
Applications (all ages) by sex:	P.18
Applicants (all ages) by POLAR3 quintile:	P.19
Applications (all ages) by POLAR3 quintile:	P.20
Applicants (all ages) by ethnic group:	P.21
Applications (all ages) by ethnic group:	P.22

P.1 18 year old applicants

Statistic	2010	2011	2012	2013	2014	2015
June deadline applicants	21,605	20,765	19,715	20,570	21,360	23,655
Placed June deadline applicants	2,365	2,110	2,920	2,860	3,025	3,195
All placed applicants	2,405	2,200	3,040	2,930	3,145	3,295
June deadline applicants per 10,000 population	273.7	269.7	254.9	270.3	283.6	308.7
Placed June deadline applicants per 10,000	30.0	27.4	37.8	37.6	40.2	41.7
All placed applicants per 10,000 population	30.4	28.6	39.3	38.5	41.7	43.0

P.2 18 year old applications

Statistic	2010	2011	2012	2013	2014	2015
June deadline applications	22,020	21,155	19,995	20,900	21,675	24,130
Offers	8,755	7,590	11,180	12,915	15,305	16,235
Offer rate	39.8%	35.9%	55.9%	61.8%	70.6%	67.3%

P.3 18 year old applicants by sex

Statistic	Sex	2010	2011	2012	2013	2014	2015
June deadline applicants	Men	10,285	9,795	9,465	9,920	10,430	10,925
	Women	11,325	10,970	10,250	10,655	10,930	12,730
Placed June deadline applicants	Men	1,135	1,000	1,420	1,375	1,485	1,475
	Women	1,230	1,110	1,500	1,485	1,540	1,720
All placed applicants	Men	1,150	1,035	1,480	1,405	1,525	1,525
	Women	1,255	1,165	1,565	1,530	1,620	1,770
June deadline applicants per 10,000 population	Men	256.0	248.9	238.7	254.1	269.4	278.4
	Women	291.9	291.3	271.9	287.5	298.6	340.6
Placed June deadline applicants per 10,000 population	Men	28.3	25.5	35.8	35.2	38.4	37.6
	Women	31.7	29.4	39.8	40.1	42.1	46.0
All placed applicants per 10,000 population	Men	28.6	26.4	37.3	35.9	39.4	38.8
	Women	32.4	30.9	41.5	41.3	44.2	47.4

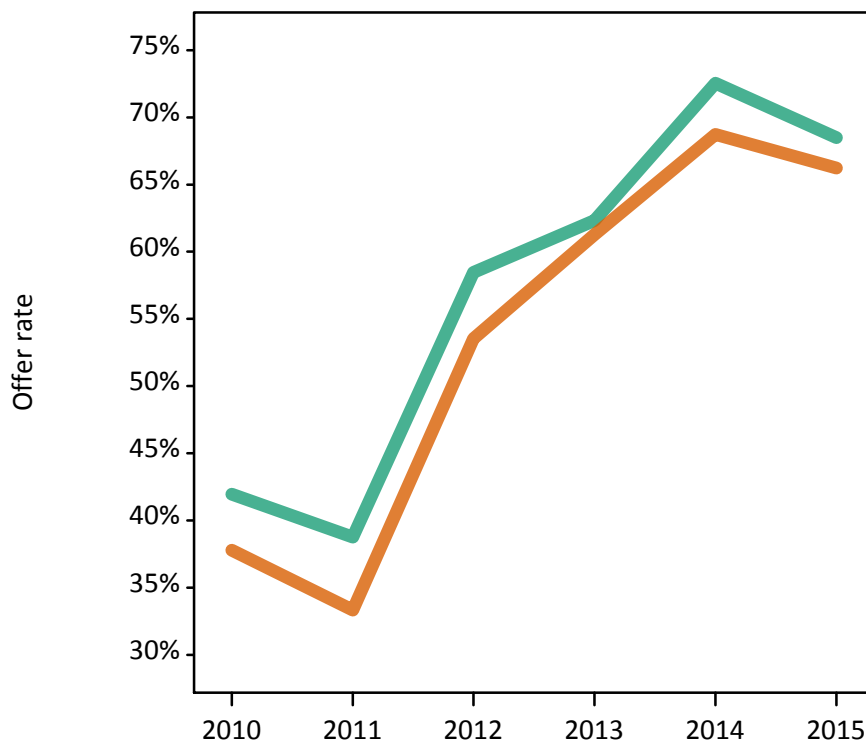
P.4 18 year old applications by sex

Statistic	Sex	2010	2011	2012	2013	2014	2015
June deadline applications	Men	10,475	9,980	9,600	10,090	10,595	11,130
	Women	11,540	11,175	10,395	10,815	11,080	13,000
Offers	Men	4,395	3,870	5,615	6,290	7,685	7,620
	Women	4,360	3,725	5,565	6,625	7,615	8,610
Offer rate	Men	42.0%	38.8%	58.5%	62.3%	72.6%	68.5%
	Women	37.8%	33.3%	53.5%	61.3%	68.7%	66.2%
Average offer rate	Men	42.7%	39.2%	59.5%	63.3%	73.1%	69.0%
	Women	37.1%	32.9%	52.6%	60.3%	68.3%	65.8%
Percentage point difference between offer rate and average offer rate	Men	-0.8	-0.5	-1.1	-1.0	-0.5	-0.5
	Women	0.7	0.4	1.0	0.9	0.5	0.4
Contribution of group to the average offer rate	Men	0.583	0.575	0.583	0.597	0.602	0.581
	Women	0.621	0.620	0.615	0.624	0.620	0.641

P.5 18 year old offer rate by sex

Note: The line for a group is not plotted when that group made fewer than 10 applications in any of the years from 2010-2015.

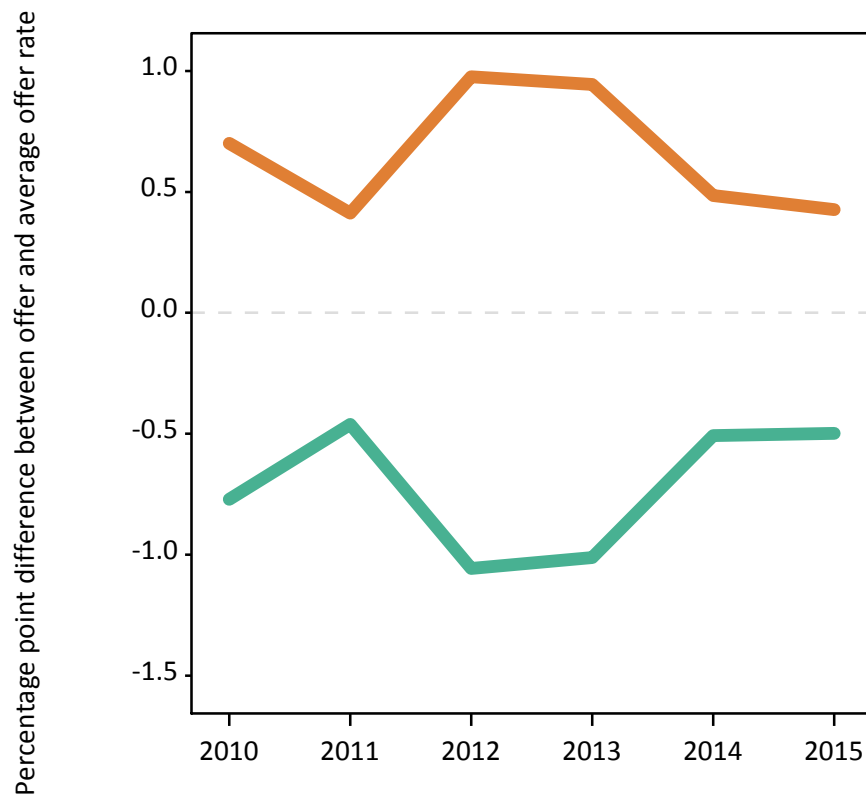
Men
Women



P.6 Percentage point difference between 18 year old offer rate and average offer rate by sex

Note: The line for a group is not plotted when that group made fewer than 50 applications in any of the years from 2010-2015.

Men
Women



P.7 18 year old applicants by POLAR3 quintile

Statistic	POLAR3 quintile	2010	2011	2012	2013	2014	2015
June deadline applicants	Quintile 1	1,035	965	915	945	1,075	1,180
	Quintile 2	1,900	1,795	1,740	1,795	1,845	2,150
	Quintile 3	3,110	2,990	2,815	2,975	3,040	3,405
	Quintile 4	5,220	4,980	4,740	4,935	5,020	5,505
	Quintile 5	10,285	9,990	9,465	9,885	10,325	11,355
Placed June deadline applicants	Quintile 1	75	60	90	90	110	120
	Quintile 2	150	115	185	180	185	230
	Quintile 3	265	285	340	360	355	390
	Quintile 4	610	505	700	655	700	735
	Quintile 5	1,265	1,135	1,605	1,570	1,665	1,715
All placed applicants	Quintile 1	75	65	95	90	115	120
	Quintile 2	155	125	195	185	195	235
	Quintile 3	265	295	350	370	370	400
	Quintile 4	620	525	720	675	725	760
	Quintile 5	1,285	1,180	1,680	1,600	1,730	1,775
June deadline applicants per 10,000 population	Quintile 1	69.9	67.1	64.1	67.8	77.3	84.2
	Quintile 2	123.6	119.5	116.1	121.7	126.2	144.9
	Quintile 3	195.6	194.3	182.3	195.1	201.9	221.9
	Quintile 4	327.9	317.9	298.7	315.5	325.6	351.7
	Quintile 5	606.7	603.5	563.4	597.7	632.9	678.3
Placed June deadline applicants per 10,000 population	Quintile 1	5.0	4.2	6.3	6.5	8.0	8.4
	Quintile 2	9.7	7.7	12.4	12.1	12.6	15.5
	Quintile 3	16.5	18.6	22.1	23.6	23.7	25.5
	Quintile 4	38.2	32.2	44.0	41.8	45.4	47.0
	Quintile 5	74.6	68.6	95.4	95.1	102.0	102.5
All placed applicants per 10,000 population	Quintile 1	5.0	4.4	6.6	6.6	8.3	8.5
	Quintile 2	10.0	8.2	13.0	12.4	13.2	15.8
	Quintile 3	16.7	19.2	22.7	24.4	24.5	26.1
	Quintile 4	38.8	33.6	45.4	43.3	47.0	48.5
	Quintile 5	75.9	71.4	99.9	96.9	106.1	106.0

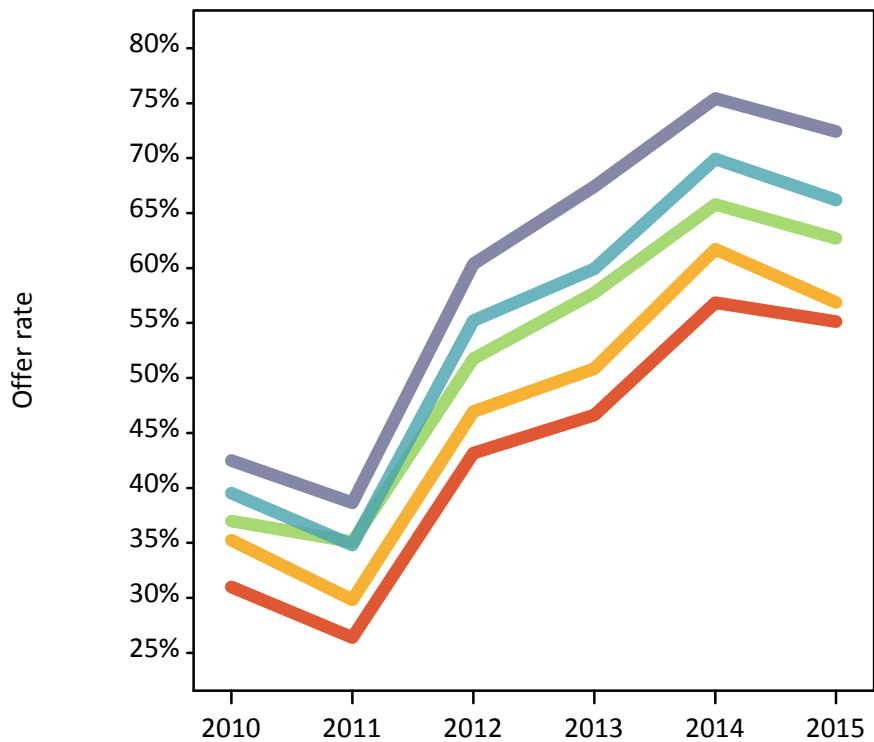
P.8 18 year old applications by POLAR3 quintile

Statistic	POLAR3 quintile	2010	2011	2012	2013	2014	2015
June deadline applications	Quintile 1	1,065	985	935	975	1,100	1,220
	Quintile 2	1,945	1,840	1,775	1,825	1,885	2,205
	Quintile 3	3,175	3,050	2,860	3,030	3,080	3,475
	Quintile 4	5,320	5,075	4,810	5,010	5,080	5,610
	Quintile 5	10,455	10,160	9,575	10,020	10,470	11,570
Offers	Quintile 1	330	260	405	455	625	670
	Quintile 2	685	550	835	930	1,165	1,255
	Quintile 3	1,175	1,070	1,480	1,750	2,025	2,180
	Quintile 4	2,100	1,765	2,655	3,005	3,555	3,710
	Quintile 5	4,440	3,925	5,780	6,755	7,895	8,380
Offer rate	Quintile 1	31.0%	26.4%	43.2%	46.6%	56.9%	55.1%
	Quintile 2	35.2%	29.8%	47.0%	50.8%	61.7%	56.9%
	Quintile 3	37.0%	35.1%	51.7%	57.8%	65.8%	62.7%
	Quintile 4	39.5%	34.8%	55.2%	59.9%	69.9%	66.2%
	Quintile 5	42.5%	38.6%	60.4%	67.4%	75.4%	72.4%
Average offer rate	Quintile 1	33.7%	29.7%	46.8%	50.7%	60.5%	56.2%
	Quintile 2	37.2%	32.0%	49.7%	53.8%	64.4%	58.0%
	Quintile 3	37.4%	34.7%	52.2%	58.7%	66.5%	64.6%
	Quintile 4	39.7%	34.6%	55.6%	60.7%	70.3%	66.8%
	Quintile 5	41.6%	38.1%	59.2%	65.8%	74.2%	71.2%
Percentage point difference between offer rate and average offer rate	Quintile 1	-2.7	-3.3	-3.7	-4.1	-3.6	-1.1
	Quintile 2	-2.0	-2.2	-2.7	-3.0	-2.7	-1.1
	Quintile 3	-0.4	0.4	-0.4	-0.9	-0.7	-1.9
	Quintile 4	-0.1	0.2	-0.4	-0.7	-0.3	-0.6
	Quintile 5	0.8	0.5	1.2	1.6	1.2	1.2
Contribution of group to the average offer rate	Quintile 1	0.121	0.120	0.121	0.135	0.120	0.126
	Quintile 2	0.146	0.143	0.146	0.146	0.145	0.148
	Quintile 3	0.194	0.187	0.191	0.189	0.185	0.183
	Quintile 4	0.274	0.274	0.275	0.269	0.265	0.262
	Quintile 5	0.515	0.519	0.517	0.521	0.520	0.520

P.9 18 year old offer rate by POLAR3 quintile

Note: The line for a group is not plotted when that group made fewer than 10 applications in any of the years from 2010-2015.

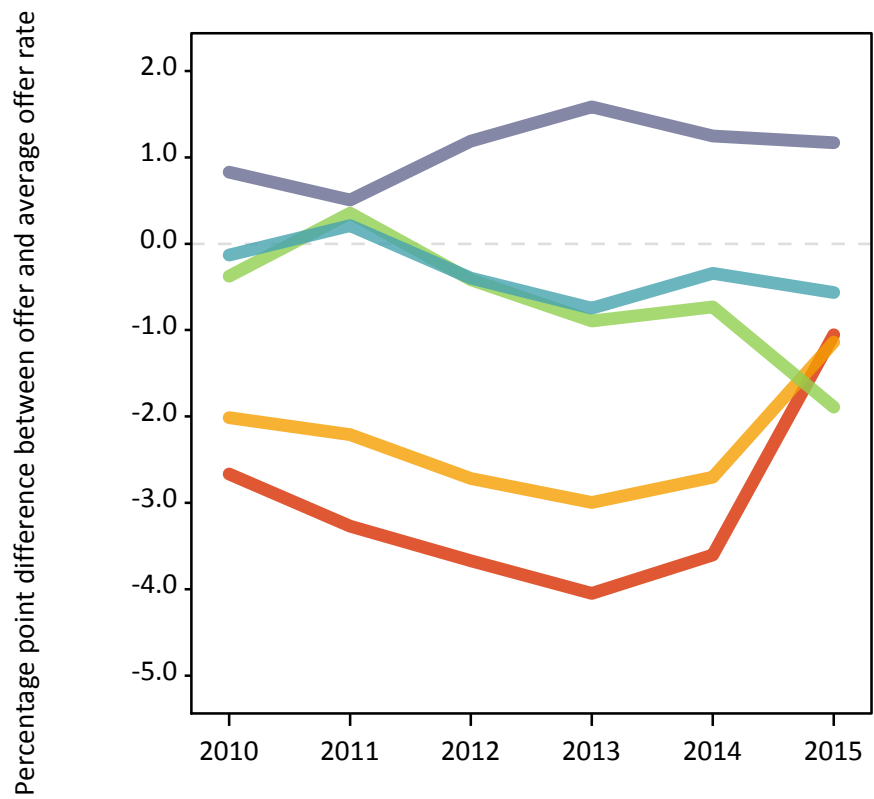
- Quintile 1
- Quintile 2
- Quintile 3
- Quintile 4
- Quintile 5



P.10 Percentage point difference between 18 year old offer rate and average offer rate by POLAR3 quintile

Note: The line for a group is not plotted when that group made fewer than 50 applications in any of the years from 2010-2015.

- Quintile 1
- Quintile 2
- Quintile 3
- Quintile 4
- Quintile 5



P.11 18 year old applicants by ethnic group

Statistic	Ethnic group	2010	2011	2012	2013	2014	2015
June deadline applicants	Asian	1,510	1,625	1,485	1,780	1,890	2,250
	Black	425	405	410	480	560	675
	Mixed	795	935	900	950	1,070	1,215
	White	18,545	17,435	16,595	17,025	17,455	19,015
	Other	145	155	160	175	240	275
Placed June deadline applicants	Asian	110	75	160	160	165	175
	Black	25	25	30	15	40	45
	Mixed	70	80	125	120	160	165
	White	2,120	1,905	2,570	2,530	2,615	2,755
	Other	15	10	20	15	30	30
All placed applicants	Asian	115	80	170	175	180	185
	Black	25	25	30	15	45	50
	Mixed	70	85	130	125	165	170
	White	2,150	1,980	2,665	2,580	2,710	2,825
	Other	15	10	20	15	35	30
June deadline applicants per 10,000 population	Asian	244.1	257.8	229.2	269.9	278.6	317.7
	Black	162.4	148.5	146.3	161.7	185.1	211.5
	Mixed	342.3	385.2	346.3	351.4	371.9	393.8
	White	276.5	269.3	257.0	270.5	282.9	305.2
	Other	188.3	192.6	180.8	194.1	257.9	283.5
Placed June deadline applicants per 10,000 population	Asian	18.0	11.9	25.0	24.0	24.6	24.4
	Black	9.6	8.8	9.9	5.4	13.2	13.8
	Mixed	30.6	33.0	47.2	44.4	55.6	54.2
	White	31.6	29.4	39.8	40.2	42.4	44.2
	Other	18.2	12.3	21.5	15.4	34.4	29.1
All placed applicants per 10,000 population	Asian	18.3	13.0	26.4	26.2	26.4	26.0
	Black	9.6	9.9	10.3	5.7	14.8	15.7
	Mixed	31.1	34.7	50.7	45.9	57.0	55.8
	White	32.1	30.6	41.3	41.0	43.9	45.4
	Other	18.2	12.3	23.7	17.6	36.5	31.2

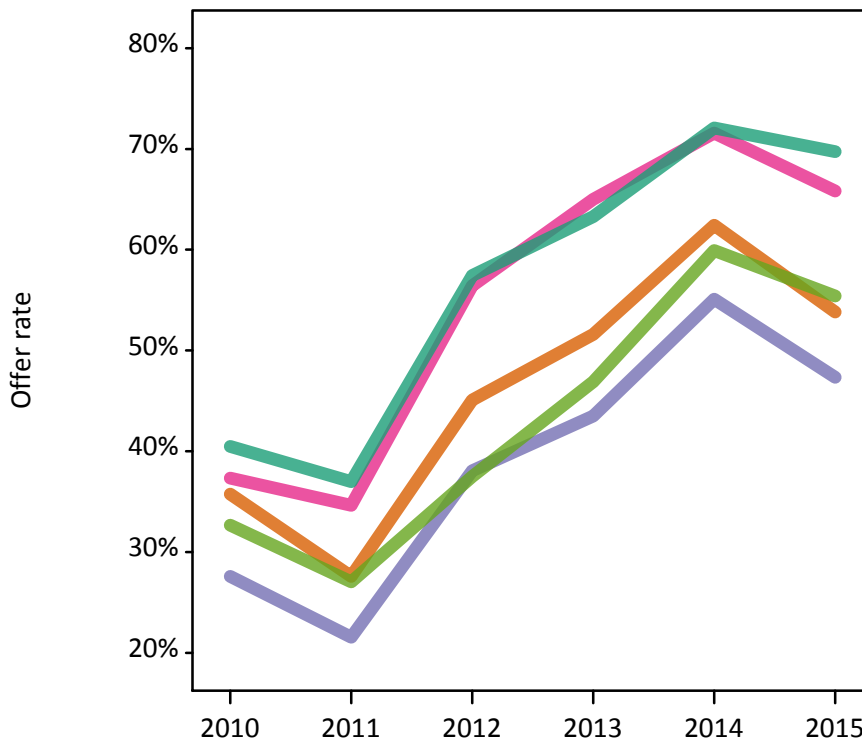
P.12 18 year old applications by ethnic group

Statistic	Ethnic group	2010	2011	2012	2013	2014	2015
June deadline applications	Asian	1,520	1,640	1,495	1,800	1,905	2,270
	Black	430	415	415	485	570	680
	Mixed	815	945	915	960	1,085	1,225
	White	18,910	17,785	16,845	17,320	17,730	19,440
	Other	145	160	160	175	240	280
Offers	Asian	545	450	675	930	1,190	1,220
	Black	120	90	160	210	315	320
	Mixed	305	330	515	625	780	805
	White	7,655	6,580	9,675	10,960	12,780	13,555
	Other	50	45	60	85	145	155
Offer rate	Asian	35.7%	27.6%	45.1%	51.6%	62.4%	53.8%
	Black	27.6%	21.5%	38.1%	43.5%	55.1%	47.3%
	Mixed	37.3%	34.6%	56.4%	65.0%	71.6%	65.8%
	White	40.5%	37.0%	57.4%	63.3%	72.1%	69.7%
	Other	32.7%	27.0%	37.5%	46.9%	59.9%	55.4%
Average offer rate	Asian	38.5%	30.4%	48.1%	52.0%	63.1%	55.7%
	Black	30.1%	23.3%	42.0%	44.4%	58.4%	50.7%
	Mixed	39.4%	35.3%	55.9%	63.2%	72.4%	66.0%
	White	40.1%	36.7%	57.0%	63.3%	71.9%	69.4%
	Other	35.2%	30.5%	44.0%	46.9%	59.4%	56.8%
Percentage point difference between offer rate and average offer rate	Asian	-2.8	-2.8	-3.0	-0.4	-0.6	-1.9
	Black	-2.6	-1.7	-3.9	-0.9	-3.3	-3.4
	Mixed	-2.1	-0.7	0.5	1.8	-0.8	-0.2
	White	0.4	0.3	0.4	-0.1	0.2	0.4
	Other	-2.5	-3.4	-6.5	-0.0	0.5	-1.4
Contribution of group to the average offer rate	Asian	0.179	0.209	0.192	0.205	0.185	0.189
	Black	0.115	0.107	0.116	0.112	0.109	0.094
	Mixed	0.078	0.086	0.094	0.087	0.086	0.086
	White	0.875	0.861	0.861	0.850	0.838	0.826
	Other	0.063	0.046	0.047	0.049	0.052	0.055

P.13 18 year old offer rate by ethnic group

Note: The line for a group is not plotted when that group made fewer than 10 applications in any of the years from 2010-2015.

- Asian
- Black
- Mixed
- White
- Other



P.14 Percentage point difference between 18 year old offer rate and average offer rate by ethnic group

Note: The line for a group is not plotted when that group made fewer than 50 applications in any of the years from 2010-2015.

- Asian
- Black
- Mixed
- White
- Other



P.15 Applicants (all ages)

Statistic	2010	2011	2012	2013	2014	2015
June deadline applicants	29,840	29,005	26,390	28,135	28,820	31,405
Placed June deadline applicants	3,140	2,770	3,720	3,845	4,140	4,195
All placed applicants	3,190	2,890	3,870	3,940	4,300	4,330

P.16 Applications (all ages)

Statistic	2010	2011	2012	2013	2014	2015
June deadline applications	30,660	29,735	26,935	28,790	29,490	32,215
Offers	10,800	9,335	13,410	15,980	18,940	19,870
Offer rate	35.2%	31.4%	49.8%	55.5%	64.2%	61.7%

P.17 Applicants (all ages) by sex

Statistic	Sex	2010	2011	2012	2013	2014	2015
June deadline applicants	Men	14,220	13,770	12,760	13,655	14,155	14,790
	Women	15,615	15,235	13,630	14,485	14,665	16,620
Placed June deadline applicants	Men	1,485	1,295	1,825	1,840	2,025	1,935
	Women	1,655	1,475	1,895	2,005	2,115	2,260
All placed applicants	Men	1,505	1,345	1,895	1,880	2,090	2,000
	Women	1,685	1,545	1,980	2,060	2,210	2,330

P.18 Applications (all ages) by sex

Statistic	Sex	2010	2011	2012	2013	2014	2015
June deadline applications	Men	14,600	14,115	13,025	13,960	14,470	15,145
	Women	16,060	15,620	13,910	14,830	15,020	17,065
Offers	Men	5,365	4,725	6,755	7,775	9,485	9,400
	Women	5,435	4,610	6,655	8,205	9,455	10,470
Offer rate	Men	36.7%	33.5%	51.9%	55.7%	65.5%	62.1%
	Women	33.8%	29.5%	47.9%	55.3%	62.9%	61.4%

P.19 Applicants (all ages) by POLAR3 quintile

Statistic	POLAR3 quintile	2010	2011	2012	2013	2014	2015
June deadline applicants	Quintile 1	1,710	1,610	1,445	1,545	1,695	1,825
	Quintile 2	2,775	2,715	2,550	2,670	2,715	3,030
	Quintile 3	4,455	4,395	3,970	4,230	4,250	4,710
	Quintile 4	7,140	6,875	6,285	6,680	6,775	7,290
	Quintile 5	13,645	13,310	12,065	12,945	13,310	14,465
Placed June deadline applicants	Quintile 1	110	95	135	145	175	180
	Quintile 2	195	170	250	245	285	305
	Quintile 3	365	385	460	515	520	545
	Quintile 4	790	645	880	870	950	975
	Quintile 5	1,665	1,470	1,985	2,060	2,195	2,185
All placed applicants	Quintile 1	115	100	140	150	180	185
	Quintile 2	205	180	265	255	305	315
	Quintile 3	365	400	475	530	540	560
	Quintile 4	805	675	910	900	980	1,005
	Quintile 5	1,695	1,530	2,075	2,100	2,275	2,260

P.20 Applications (all ages) by POLAR3 quintile

Statistic	POLAR3 quintile	2010	2011	2012	2013	2014	2015
June deadline applications	Quintile 1	1,790	1,660	1,505	1,610	1,760	1,905
	Quintile 2	2,865	2,805	2,630	2,745	2,805	3,130
	Quintile 3	4,580	4,535	4,050	4,345	4,360	4,840
	Quintile 4	7,330	7,040	6,415	6,835	6,900	7,445
	Quintile 5	13,975	13,590	12,250	13,185	13,585	14,805
Offers	Quintile 1	450	345	520	625	850	895
	Quintile 2	830	690	1,025	1,185	1,495	1,565
	Quintile 3	1,450	1,325	1,820	2,200	2,550	2,720
	Quintile 4	2,585	2,150	3,175	3,695	4,425	4,555
	Quintile 5	5,445	4,795	6,835	8,240	9,580	10,090
Offer rate	Quintile 1	25.3%	20.8%	34.4%	38.8%	48.1%	47.1%
	Quintile 2	29.0%	24.6%	39.0%	43.3%	53.2%	50.0%
	Quintile 3	31.7%	29.3%	44.9%	50.7%	58.5%	56.2%
	Quintile 4	35.2%	30.5%	49.5%	54.0%	64.1%	61.1%
	Quintile 5	39.0%	35.3%	55.8%	62.5%	70.5%	68.1%

P.21 Applicants (all ages) by ethnic group

Statistic	Ethnic group	2010	2011	2012	2013	2014	2015
June deadline applicants	Asian	2,305	2,460	2,285	2,610	2,685	3,120
	Black	875	840	795	890	920	1,115
	Mixed	1,175	1,295	1,185	1,300	1,440	1,655
	White	24,890	23,790	21,575	22,730	23,120	24,740
	Other	255	270	280	310	385	435
Placed June deadline applicants	Asian	150	105	210	205	235	235
	Black	35	35	50	40	50	70
	Mixed	100	105	155	175	220	225
	White	2,795	2,485	3,240	3,360	3,565	3,590
	Other	20	10	30	25	45	40
All placed applicants	Asian	155	115	225	225	255	255
	Black	35	40	50	40	60	75
	Mixed	100	110	165	185	225	230
	White	2,840	2,585	3,360	3,425	3,685	3,685
	Other	20	10	30	30	45	40

P.22 Applications (all ages) by ethnic group

Statistic	Ethnic group	2010	2011	2012	2013	2014	2015
June deadline applications	Asian	2,365	2,490	2,320	2,645	2,715	3,170
	Black	900	860	810	905	940	1,135
	Mixed	1,200	1,320	1,210	1,330	1,475	1,675
	White	25,585	24,435	22,035	23,290	23,690	25,435
	Other	260	270	280	320	385	445
Offers	Asian	725	590	875	1,160	1,465	1,560
	Black	160	130	210	290	400	450
	Mixed	385	405	615	770	965	1,005
	White	9,330	8,020	11,495	13,475	15,740	16,425
	Other	70	60	80	120	200	210
Offer rate	Asian	30.6%	23.7%	37.7%	43.9%	54.0%	49.2%
	Black	17.6%	15.3%	26.0%	32.3%	42.7%	39.7%
	Mixed	32.2%	30.6%	50.8%	58.0%	65.6%	59.9%
	White	36.5%	32.8%	52.2%	57.9%	66.4%	64.6%
	Other	26.4%	21.7%	28.4%	37.1%	51.9%	47.3%

Technical Notes and Definitions

UCAS undergraduate scheme

Adjustment

Adjustment allows applicants who have met and exceeded the terms of their conditional firm offer to seek and find a place at another provider whilst keeping their place at their original firm choice provider.

Clearing

Clearing is a route for applicants that are not placed and holding no offers to find a place on courses with vacancies.

Cycle year

The UCAS application cycle which runs from September to October the following year. For example the 2015 cycle runs from September 2014 through to October 2015.

End of cycle

The point in the cycle to which the numbers in this report refer, and the point at which the cycle is closed such that no more applications or offers can be made, and no more applicants can be placed. Numbers reported at the end of cycle exclude information on a small number of applicants who cancelled during the cycle.

Extra

Applicants who are unsuccessful in obtaining an offer or decline all offers may be eligible to apply through Extra, where they can apply to one further course at a time. Extra operates from 25 February until early July. It provides applicants who are eligible the possibility of obtaining an offer before exam results are published and Clearing starts.

June 30 deadline

The deadline for main scheme applications. Applicants who apply after this date will go directly into Clearing.

Record of Prior Acceptance (RPA)

RPA is an acceptance route used when a provider informs UCAS of applicants it has accepted outside of the normal application process (e.g. individuals who have applied directly to the provider).

Reporting groups

Ethnic group

High level grouping of ethnic origin as declared by the applicant: 'White', 'Black', 'Asian', 'Mixed', 'Other', 'Unknown'. Applicants who declare themselves as 'Unknown' ethnic origin are not reported in these tables, but are included in the associated csv data file.

POLAR3 quintile

Developed by HEFCE, POLAR3 classifies small areas across the UK into five groups according to their level of young participation in Higher Education. Each of these groups represents around 20 per cent of young people and is ranked from Quintile 1 (areas with the lowest young participation rates, considered as the most disadvantaged) to Quintile 5 (highest young participation rates, considered most advantaged). POLAR3 is based on the participation rates of young people between 2005 and 2009 who entered Higher Education between 2005-06 and 2010-11, therefore is most suitable for applicants aged 19 and under. These groups are assigned using the postcode declared by the applicant at the time of their application. If a UK postcode is invalid, considered unsafe for measurement or there is no link to Census geography possible then the applicant is not assigned to a quintile. Applicants with no POLAR3 quintile are not reported.

Sex

Sex as declared by the applicant.

SIMD quintile

Scottish index of multiple deprivation (SIMD) for 2012 identifies small area concentrations of multiple deprivation across all of Scotland, providing a relative measure of deprivation amongst 6505 small areas (data zones) based on 7 socio-economic domains. These small areas are classified into five groups ranked from Quintile 1 (considered the most deprived) to Quintile 5 (considered least deprived), with equal populations in each quintile. Quintiles are assigned using the postcode declared by the applicant, applicants declaring invalid postcodes are classified as 'Not assigned' and are not reported.

SIMD is only defined for applicants domiciled in Scotland, therefore any applicants domiciled outside of Scotland cannot be assigned to an SIMD quintile and so are not reported for this measure.

SIMD is only reported for providers in Scotland. Application and entry rates by SIMD are reported in the 2015 End of Cycle Report and the 2016 cycle January deadline application rate report.

Statistics reported in the tables

All placed applicants

The number of applicants placed for entry into higher education at the provider through one of their choices, including any choices made through Extra, or via Adjustment, Clearing or RPA.

All placed applicants per 10,000 population

The number of total UK domiciled 18 year old placed applicants for entry into higher education at the provider divided by the number of UK 18 year olds in the population, multiplied by 10,000. This gives the number of 18 year olds, for every 10,000 in the population, that were placed at the provider through one of their choices, including any choices made through Extra, or via Adjustment, Clearing or RPA. It is an alternative way of expressing the entry rate to a provider. By referencing the underlying population this statistic shows how the number of placed applicants is changing in relation to the available pool of potential applicants and so gives the chance that somebody from the group will be placed at a provider.

This statistic is only reported for 18 year olds.

Average offer rate

The offer rate that you might expect if the predicted grades and subject choice of applicants were the only factors that influenced whether an applicant was made an offer by the provider. The average offer rate is calculated by dividing applicants according to their specific combination of grades (for A levels the best three predicted grades are used, for BTECs, International Baccalaureate and Scottish Highers and Advanced Highers, predicted grades along with any grades already achieved upon applying are used) and subject choice. For each combination the number of main scheme offers is divided by the number of main scheme applications, to give an overall offer rate. This is then multiplied by the number of applications made by the group for which the average offer rate is being calculated (for example POLAR3 quintile 1), to give an average number of offers for that group. These average number of offers are then added together across all combinations of predicted grade and subject and divided by the number of main scheme applications from the group to give the average offer rate.

The average offer rate does not attempt to control for any other factors that may play a part in the decision to make an offer, such as the subject of the qualifications studied, their relevance to a course, or the grade in each subject; higher numbers of A levels being studied; the exact profile of grades predicted; personal statements; teacher references; interviews; or any other criteria (such as work experience or portfolios) that may be part of the admissions decision.

This statistic is only reported for 18 year olds.

Contribution of group to the average offer rate

The way in which the average offer rate is defined means that the pattern of application and offers of a group (for example POLAR3 quintile 1) will always contribute, in part, to the average offer rate for that group. When this contribution is large, the average offer rate will mainly reflect the patterns for the group, meaning that the value of the average offer rate will be similar to the offer rate, the percentage point difference statistic will be small, and any real difference between the offer rate and what might be expected given the predicted grades and subject choices of the applicants will be difficult to detect.

Values of the contribution of group to the average offer rate range between 0 and 1. The closer the value is to 1 the greater the contribution a group makes to its own average offer rate.

This statistic is only reported for 18 year olds.

Placed June deadline applicants

An applicant who has been placed for entry into higher education at the provider through a June deadline application.

Placed June deadline applicants per 10,000 population

The number of UK domiciled 18 year old placed June deadline applicants at the provider divided by the number of UK 18 year olds in the population, multiplied by 10,000. This gives the number of 18 year olds, for every 10,000 in the population, that were placed at the provider through one of their June deadline applications. It is an alternative way of expressing the entry rate to a provider, but for placed June deadline applicants only. By referencing the underlying population this statistic shows how the number of placed June deadline applicants is changing in relation to the available pool of potential 18 year old applicants and so gives the chance that somebody from the group will be placed at a provider through a June deadline application.

This statistic is only reported for 18 year olds.

June deadline applications

An application (or choice) to a course in higher education to the provider that is made by the June 30 deadline. Each applicant can make up to five choices this way. The number of June deadline applications does not include choices made through the following routes: Clearing, Extra, Adjustment and RPAs. Applications made to October deadline courses received after the October deadline are not included in these statistics.

June deadline applicants

The number of applicants that made at least one application to the provider by the June 30 deadline.

June deadline applicants per 10,000 population

The number of UK domiciled 18 year old June deadline applicants to the provider divided by the number of UK 18 year olds in the population, multiplied by 10,000. This gives the number of 18 year olds, for every 10,000 in the population, who applied by the June 30 deadline. It is equivalent to the application rate. By referencing the underlying population this statistic shows how the number of June deadline applicants is changing in relation to the available pool of potential 18 year old applicants and so gives the chance that somebody from the group will apply to a provider by the June 30 deadline.

This statistic is only reported for 18 year olds.

Offers

An offer is defined as a provider's decision in response to an application to offer a place to an applicant, often subject to the applicant satisfying academic and/or other criteria, via a June deadline application (i.e. does not cover choices made through the following routes: Clearing, Extra, Adjustment and RPAs).

Offer rate

The number of offers made divided by the number of June deadline applications. This gives the proportion of all June deadline applications to the provider that received an offer.

Percentage point difference between offer rate and average offer rate

The offer rate minus the average offer rate.

The percentage point difference can be compared to the expected range of statistical variation resulting from the calculation of the average offer rate using the Average Offer Rate Lookup Table. Where the value of the percentage point difference lies outside of this range, the percentage point difference may be considered to represent a real difference between the offer rate and the average offer rate.

Other definitions

Age

This analysis uses country-specific age definitions that align with the cut off points for school and college cohorts within the different administrations of the UK. For England and Wales, ages are defined on the 31 August, for Northern Ireland on the 1 July and for Scotland on the 28 February the following year. Defining ages in this way matches the assignment of children to school cohorts. For applicants outside of the UK a cohort cut off of 31 August has been used.

Provider

A higher education provider - a university or college.

UK domiciled

Declared area of permanent residence within England, Northern Ireland, Scotland and Wales. Applicants from the Channel Islands and Isle of Man are not included.