

B16 University of Bath

Cycle years: 2010 - 2015

Cycle Reference Point: End of Cycle

Applicant coverage: UK domiciled

Reporting groups: Sex, POLAR3, ethnic group

Applicant statistics: June deadline applicants, placed June deadline applicants, all placed applicants, June deadline applicants per 10,000 population, placed June deadline applicants per 10,000 population, all placed applicants per 10,000 population

Application statistics: June deadline applications, offers, offer rate, average offer rate, percentage point difference between offer rate and average offer rate, contribution of group to the average offer rate

Non-disclosure controls: To avoid the disclosure of information about any individual the following measures are taken

- Applicants, placed applicants, applications and offers are rounded to the nearest 5.
- Applicants/placed applicants per 10,000 population figures are reported as 0 if the applicant/placed applicant figures are rounded to 0.
- All statistics related to the offer rate are not reported when the number of applications for a group is less than 10. The percentage point difference between the offer rate and the average offer rate is not reported when the number of applications for a group is less than 50.
- Offer rates are reported as 0% if there are fewer than 5 offers, and 100% if the number of offers is within 5 of the number of applications. When the offer rate is reported as 0% or 100%, it is reported in italics.

Contents:

18 year old applicants:	P.1
18 year old applications:	P.2
18 year old applicants by sex:	P.3
18 year old applications by sex:	P.4
18 year old applicants by POLAR3 quintile:	P.7
18 year old applications by POLAR3 quintile:	P.8
18 year old applicants by ethnic group:	P.11
18 year old applications by ethnic group:	P.12
Applicants (all ages):	P.15
Applications (all ages):	P.16
Applicants (all ages) by sex:	P.17
Applications (all ages) by sex:	P.18
Applicants (all ages) by POLAR3 quintile:	P.19
Applications (all ages) by POLAR3 quintile:	P.20
Applicants (all ages) by ethnic group:	P.21
Applications (all ages) by ethnic group:	P.22

P.1 18 year old applicants

Statistic	2010	2011	2012	2013	2014	2015
June deadline applicants	10,080	9,710	10,345	11,475	12,685	15,240
Placed June deadline applicants	1,570	1,565	1,880	1,960	2,025	2,240
All placed applicants	1,645	1,595	1,930	2,000	2,100	2,260
June deadline applicants per 10,000 population	127.7	126.1	133.7	150.8	168.5	198.9
Placed June deadline applicants per 10,000	19.9	20.3	24.3	25.8	26.9	29.3
All placed applicants per 10,000 population	20.9	20.7	25.0	26.3	27.9	29.5

P.2 18 year old applications

Statistic	2010	2011	2012	2013	2014	2015
June deadline applications	10,265	9,875	10,525	11,645	12,900	15,535
Offers	7,825	7,315	8,425	9,475	10,415	12,175
Offer rate	76.2%	74.1%	80.0%	81.4%	80.7%	78.4%

P.3 18 year old applicants by sex

Statistic	Sex	2010	2011	2012	2013	2014	2015
June deadline applicants	Men	5,980	5,700	6,155	6,935	7,545	9,100
	Women	4,100	4,010	4,190	4,540	5,140	6,140
Placed June deadline applicants	Men	905	875	1,100	1,155	1,180	1,310
	Women	665	690	780	805	845	930
All placed applicants	Men	950	890	1,130	1,175	1,215	1,320
	Women	695	705	800	825	885	940
June deadline applicants per 10,000 population	Men	148.9	144.8	155.2	177.6	195.0	231.8
	Women	105.8	106.5	111.2	122.5	140.4	164.4
Placed June deadline applicants per 10,000 population	Men	22.5	22.3	27.7	29.6	30.5	33.4
	Women	17.1	18.3	20.7	21.8	23.1	24.9
All placed applicants per 10,000 population	Men	23.7	22.7	28.5	30.1	31.4	33.6
	Women	17.9	18.7	21.2	22.2	24.2	25.1

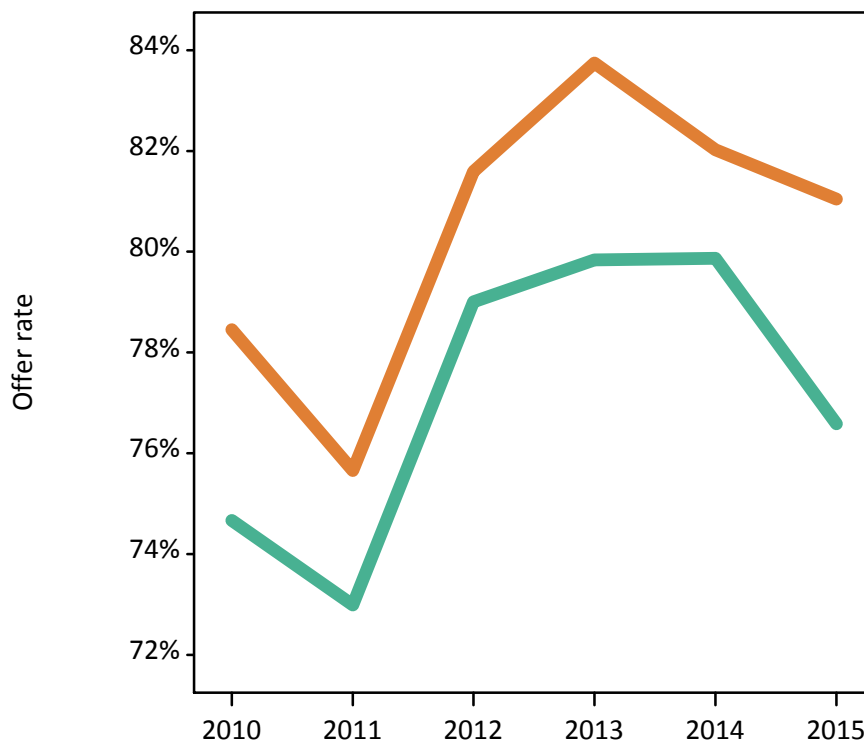
P.4 18 year old applications by sex

Statistic	Sex	2010	2011	2012	2013	2014	2015
June deadline applications	Men	6,120	5,815	6,285	7,040	7,665	9,270
	Women	4,145	4,065	4,235	4,605	5,235	6,265
Offers	Men	4,570	4,245	4,965	5,620	6,125	7,100
	Women	3,250	3,075	3,455	3,860	4,295	5,075
Offer rate	Men	74.7%	73.0%	79.0%	79.8%	79.9%	76.6%
	Women	78.5%	75.7%	81.6%	83.7%	82.0%	81.0%
Average offer rate	Men	75.8%	74.0%	79.5%	80.9%	80.3%	76.6%
	Women	76.8%	74.3%	80.9%	82.1%	81.4%	81.0%
Percentage point difference between offer rate and average offer rate	Men	-1.1	-1.0	-0.5	-1.1	-0.4	-0.0
	Women	1.6	1.4	0.7	1.6	0.6	0.0
Contribution of group to the average offer rate	Men	0.694	0.694	0.685	0.695	0.694	0.687
	Women	0.548	0.562	0.532	0.534	0.552	0.537

P.5 18 year old offer rate by sex

Note: The line for a group is not plotted when that group made fewer than 10 applications in any of the years from 2010-2015.

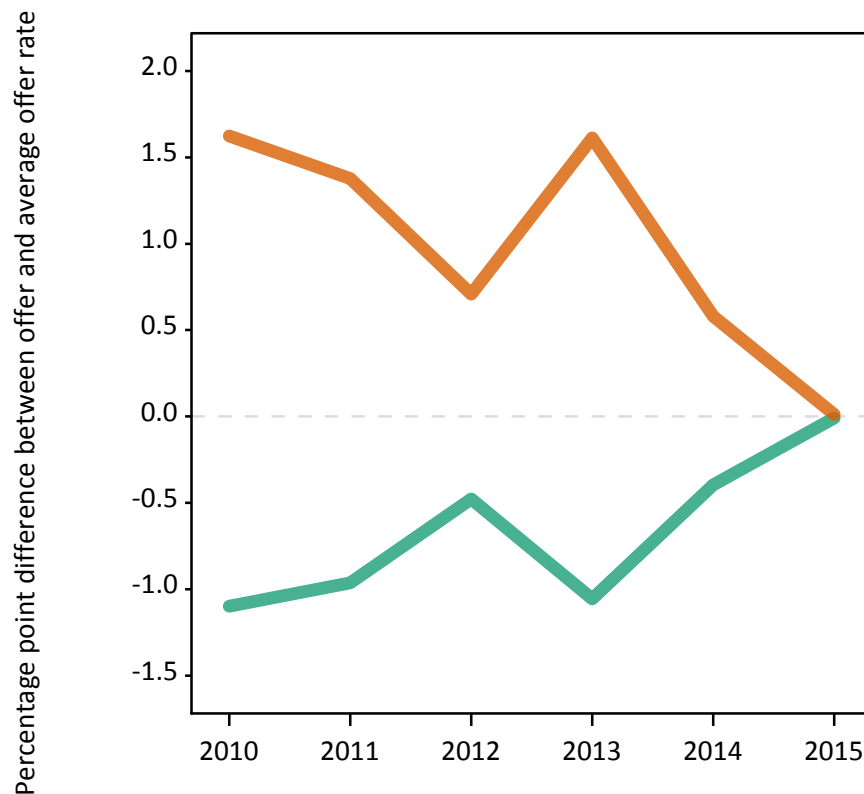
Men
Women



P.6 Percentage point difference between 18 year old offer rate and average offer rate by sex

Note: The line for a group is not plotted when that group made fewer than 50 applications in any of the years from 2010-2015.

Men
Women



P.7 18 year old applicants by POLAR3 quintile

Statistic	POLAR3 quintile	2010	2011	2012	2013	2014	2015
June deadline applicants	Quintile 1	575	575	600	660	730	920
	Quintile 2	1,040	1,065	1,115	1,155	1,260	1,550
	Quintile 3	1,700	1,495	1,575	1,745	1,945	2,350
	Quintile 4	2,525	2,375	2,495	2,835	3,110	3,700
	Quintile 5	4,220	4,180	4,535	5,055	5,615	6,680
Placed June deadline applicants	Quintile 1	70	90	85	90	90	115
	Quintile 2	140	180	180	190	215	210
	Quintile 3	270	235	255	300	265	320
	Quintile 4	415	370	475	485	500	565
	Quintile 5	675	690	880	895	955	1,025
All placed applicants	Quintile 1	70	95	90	90	95	115
	Quintile 2	145	180	180	190	215	210
	Quintile 3	285	240	260	305	280	325
	Quintile 4	430	370	495	500	515	570
	Quintile 5	710	705	900	910	990	1,035
June deadline applicants per 10,000 population	Quintile 1	39.0	39.9	42.0	47.4	52.6	65.6
	Quintile 2	67.8	70.7	74.3	78.5	86.0	104.5
	Quintile 3	106.8	97.3	102.0	114.4	129.2	152.9
	Quintile 4	158.5	151.6	157.1	181.3	201.8	236.5
	Quintile 5	248.9	252.4	270.1	305.6	344.2	399.1
Placed June deadline applicants per 10,000 population	Quintile 1	4.7	6.1	6.0	6.4	6.5	8.2
	Quintile 2	9.0	12.0	12.0	12.8	14.6	14.0
	Quintile 3	16.9	15.2	16.5	19.6	17.7	21.0
	Quintile 4	26.0	23.6	30.0	31.1	32.3	36.2
	Quintile 5	39.8	41.6	52.3	54.1	58.4	61.3
All placed applicants per 10,000 population	Quintile 1	4.9	6.5	6.3	6.5	6.8	8.3
	Quintile 2	9.4	12.1	12.1	13.0	14.8	14.1
	Quintile 3	17.8	15.7	17.0	20.1	18.5	21.1
	Quintile 4	27.1	23.7	31.1	31.9	33.5	36.5
	Quintile 5	42.0	42.5	53.6	55.0	60.8	61.9

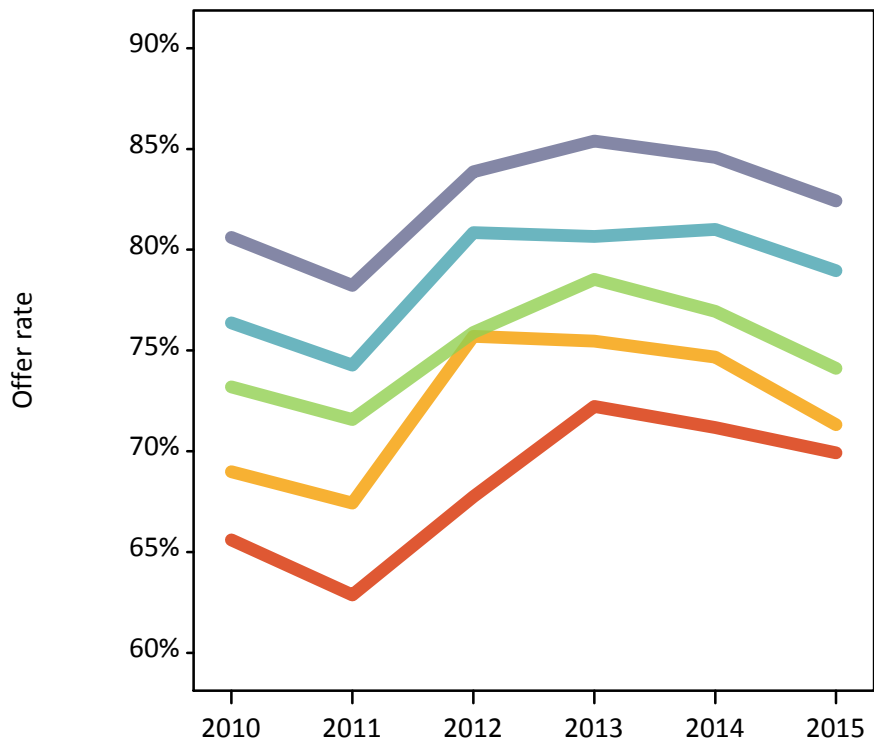
P.8 18 year old applications by POLAR3 quintile

Statistic	POLAR3 quintile	2010	2011	2012	2013	2014	2015
June deadline applications	Quintile 1	595	585	615	675	745	940
	Quintile 2	1,065	1,090	1,150	1,180	1,280	1,595
	Quintile 3	1,740	1,530	1,600	1,775	1,970	2,385
	Quintile 4	2,570	2,410	2,540	2,885	3,170	3,775
	Quintile 5	4,270	4,235	4,590	5,105	5,710	6,800
Offers	Quintile 1	390	370	415	490	530	660
	Quintile 2	735	735	870	890	955	1,140
	Quintile 3	1,275	1,095	1,215	1,395	1,515	1,765
	Quintile 4	1,960	1,790	2,055	2,330	2,565	2,980
	Quintile 5	3,445	3,310	3,850	4,360	4,830	5,605
Offer rate	Quintile 1	65.6%	62.9%	67.8%	72.2%	71.2%	69.9%
	Quintile 2	69.0%	67.4%	75.7%	75.5%	74.7%	71.3%
	Quintile 3	73.2%	71.6%	75.9%	78.5%	76.9%	74.1%
	Quintile 4	76.4%	74.3%	80.8%	80.7%	81.0%	79.0%
	Quintile 5	80.6%	78.2%	83.9%	85.4%	84.6%	82.4%
Average offer rate	Quintile 1	66.3%	65.1%	70.5%	72.9%	71.5%	69.0%
	Quintile 2	70.7%	69.9%	75.6%	75.6%	76.5%	72.8%
	Quintile 3	73.5%	71.6%	76.9%	79.3%	77.4%	75.8%
	Quintile 4	76.6%	73.5%	80.3%	81.2%	80.9%	78.6%
	Quintile 5	79.8%	77.7%	83.4%	84.7%	84.0%	81.8%
Percentage point difference between offer rate and average offer rate	Quintile 1	-0.7	-2.2	-2.8	-0.7	-0.4	0.9
	Quintile 2	-1.7	-2.5	0.1	-0.1	-1.8	-1.5
	Quintile 3	-0.3	-0.1	-1.0	-0.7	-0.5	-1.7
	Quintile 4	-0.3	0.8	0.5	-0.6	0.1	0.3
	Quintile 5	0.8	0.5	0.4	0.7	0.6	0.6
Contribution of group to the average offer rate	Quintile 1	0.136	0.148	0.132	0.119	0.137	0.127
	Quintile 2	0.166	0.175	0.163	0.158	0.152	0.148
	Quintile 3	0.219	0.211	0.194	0.195	0.202	0.194
	Quintile 4	0.296	0.285	0.271	0.276	0.277	0.273
	Quintile 5	0.472	0.485	0.484	0.483	0.487	0.477

P.9 18 year old offer rate by POLAR3 quintile

Note: The line for a group is not plotted when that group made fewer than 10 applications in any of the years from 2010-2015.

- Quintile 1
- Quintile 2
- Quintile 3
- Quintile 4
- Quintile 5



P.10 Percentage point difference between 18 year old offer rate and average offer rate by POLAR3 quintile

Note: The line for a group is not plotted when that group made fewer than 50 applications in any of the years from 2010-2015.

- Quintile 1
- Quintile 2
- Quintile 3
- Quintile 4
- Quintile 5



P.11 18 year old applicants by ethnic group

Statistic	Ethnic group	2010	2011	2012	2013	2014	2015
June deadline applicants	Asian	640	675	730	960	1,120	1,455
	Black	185	200	205	260	345	455
	Mixed	315	375	385	480	555	685
	White	8,800	8,330	8,905	9,610	10,470	12,360
	Other	50	55	65	95	125	150
Placed June deadline applicants	Asian	75	90	85	95	130	160
	Black	15	15	15	30	25	40
	Mixed	55	45	60	80	90	85
	White	1,410	1,400	1,700	1,730	1,760	1,930
	Other	10	10	5	15	15	10
All placed applicants	Asian	85	95	90	100	140	160
	Black	20	15	15	30	25	40
	Mixed	55	45	65	85	95	85
	White	1,465	1,425	1,745	1,760	1,820	1,940
	Other	10	10	10	15	20	10
June deadline applicants per 10,000 population	Asian	103.8	106.9	112.7	145.2	165.3	205.6
	Black	71.4	73.5	72.4	87.9	114.1	143.0
	Mixed	136.8	154.4	147.0	177.5	193.3	222.8
	White	131.2	128.7	137.9	152.7	169.7	198.4
	Other	67.5	69.1	75.7	102.6	136.4	155.8
Placed June deadline applicants per 10,000 population	Asian	11.8	14.0	13.3	14.6	19.0	22.6
	Black	5.7	5.1	5.0	9.4	7.9	12.9
	Mixed	22.9	17.8	23.0	30.0	30.9	27.2
	White	21.0	21.6	26.3	27.5	28.5	30.9
	Other	11.7	11.1	7.9	14.3	18.3	9.3
All placed applicants per 10,000 population	Asian	14.1	14.9	13.6	15.0	20.4	22.9
	Black	6.9	5.1	5.0	9.4	8.9	13.2
	Mixed	23.7	18.6	24.2	31.8	32.3	27.9
	White	21.9	22.0	27.0	28.0	29.5	31.1
	Other	11.7	11.1	9.0	15.4	19.3	9.3

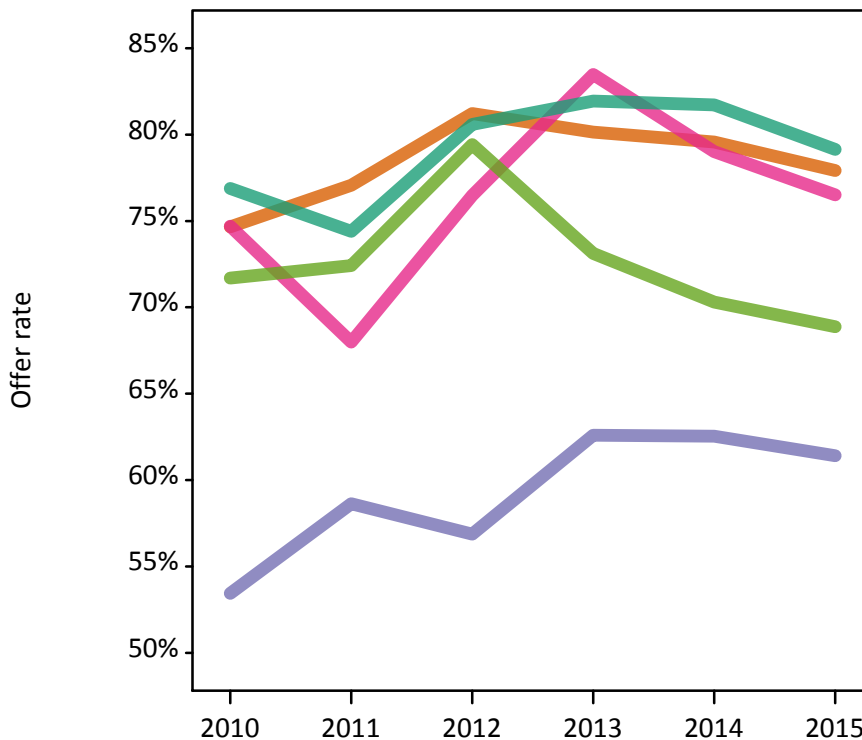
P.12 18 year old applications by ethnic group

Statistic	Ethnic group	2010	2011	2012	2013	2014	2015
June deadline applications	Asian	645	675	735	965	1,125	1,460
	Black	190	205	205	260	345	455
	Mixed	325	380	390	485	565	695
	White	8,975	8,485	9,070	9,765	10,665	12,640
	Other	55	60	70	95	130	150
Offers	Asian	480	520	595	775	895	1,135
	Black	100	120	115	165	215	280
	Mixed	240	255	300	405	450	530
	White	6,900	6,315	7,310	8,000	8,715	10,005
	Other	40	40	55	70	90	105
Offer rate	Asian	74.7%	77.1%	81.2%	80.1%	79.6%	77.9%
	Black	53.4%	58.6%	56.9%	62.6%	62.5%	61.4%
	Mixed	74.7%	68.0%	76.5%	83.5%	79.0%	76.5%
	White	76.9%	74.4%	80.6%	81.9%	81.7%	79.1%
	Other	71.7%	72.4%	79.4%	73.1%	70.3%	68.9%
Average offer rate	Asian	75.4%	75.1%	80.7%	81.8%	79.5%	77.4%
	Black	57.6%	64.9%	62.9%	67.9%	67.3%	65.9%
	Mixed	74.2%	69.1%	77.6%	82.3%	80.1%	78.4%
	White	76.7%	74.4%	80.5%	81.7%	81.4%	78.9%
	Other	70.3%	70.6%	79.2%	76.4%	73.7%	72.1%
Percentage point difference between offer rate and average offer rate	Asian	-0.7	1.9	0.5	-1.7	0.1	0.5
	Black	-4.2	-6.3	-6.0	-5.3	-4.8	-4.5
	Mixed	0.5	-1.1	-1.1	1.1	-1.1	-1.9
	White	0.2	0.0	0.1	0.3	0.3	0.2
	Other	1.4	1.8	0.2	-3.3	-3.4	-3.3
Contribution of group to the average offer rate	Asian	0.161	0.169	0.160	0.164	0.161	0.164
	Black	0.115	0.124	0.119	0.098	0.113	0.105
	Mixed	0.098	0.094	0.094	0.084	0.084	0.075
	White	0.887	0.874	0.875	0.854	0.842	0.830
	Other	0.086	0.116	0.045	0.064	0.066	0.077

P.13 18 year old offer rate by ethnic group

Note: The line for a group is not plotted when that group made fewer than 10 applications in any of the years from 2010-2015.

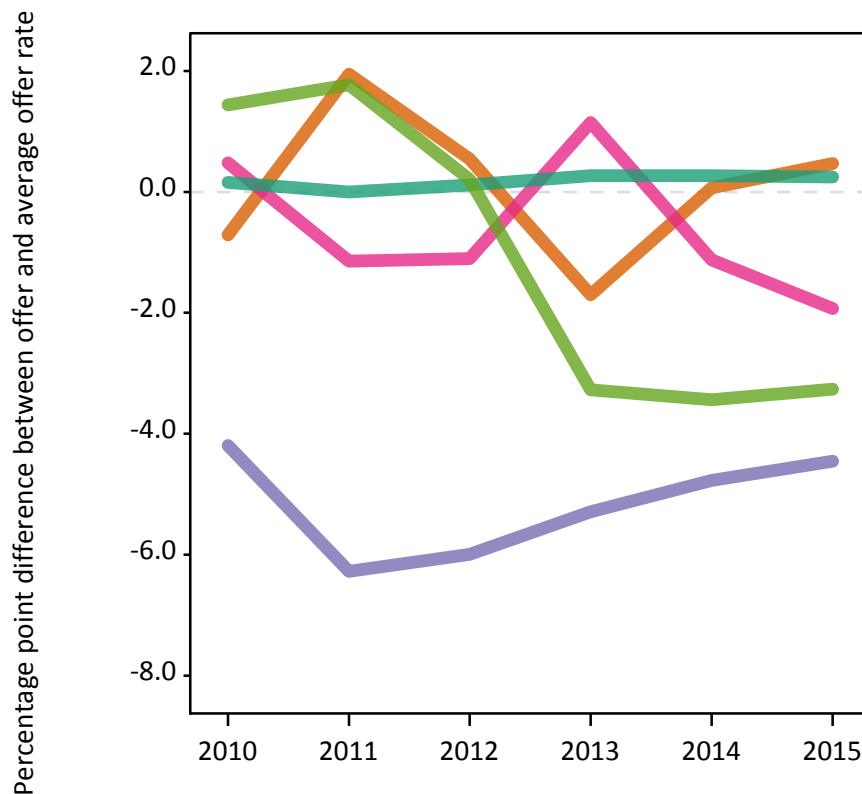
- Asian
- Black
- Mixed
- White
- Other



P.14 Percentage point difference between 18 year old offer rate and average offer rate by ethnic group

Note: The line for a group is not plotted when that group made fewer than 50 applications in any of the years from 2010-2015.

- Asian
- Black
- Mixed
- White
- Other



P.15 Applicants (all ages)

Statistic	2010	2011	2012	2013	2014	2015
June deadline applicants	13,365	13,185	13,200	14,680	16,500	19,140
Placed June deadline applicants	2,075	2,050	2,255	2,365	2,530	2,685
All placed applicants	2,195	2,105	2,330	2,425	2,625	2,705

P.16 Applications (all ages)

Statistic	2010	2011	2012	2013	2014	2015
June deadline applications	13,695	13,475	13,485	14,950	16,835	19,545
Offers	9,370	8,955	9,920	11,095	12,365	14,075
Offer rate	68.4%	66.5%	73.6%	74.2%	73.5%	72.0%

P.17 Applicants (all ages) by sex

Statistic	Sex	2010	2011	2012	2013	2014	2015
June deadline applicants	Men	7,975	7,760	7,895	8,890	9,805	11,470
	Women	5,390	5,425	5,310	5,790	6,695	7,670
Placed June deadline applicants	Men	1,205	1,160	1,315	1,390	1,465	1,555
	Women	870	885	935	975	1,065	1,130
All placed applicants	Men	1,280	1,200	1,360	1,420	1,510	1,570
	Women	915	910	965	1,005	1,115	1,140

P.18 Applications (all ages) by sex

Statistic	Sex	2010	2011	2012	2013	2014	2015
June deadline applications	Men	8,220	7,955	8,100	9,060	10,000	11,710
	Women	5,480	5,520	5,390	5,895	6,830	7,835
Offers	Men	5,485	5,190	5,875	6,590	7,230	8,175
	Women	3,885	3,765	4,045	4,505	5,135	5,900
Offer rate	Men	66.7%	65.3%	72.5%	72.7%	72.3%	69.8%
	Women	70.9%	68.2%	75.1%	76.5%	75.2%	75.3%

P.19 Applicants (all ages) by POLAR3 quintile

Statistic	POLAR3 quintile	2010	2011	2012	2013	2014	2015
June deadline applicants	Quintile 1	930	985	960	1,030	1,125	1,305
	Quintile 2	1,480	1,570	1,545	1,575	1,745	2,085
	Quintile 3	2,280	2,115	2,050	2,320	2,630	3,050
	Quintile 4	3,295	3,180	3,100	3,575	4,010	4,610
	Quintile 5	5,325	5,290	5,495	6,135	6,945	8,030
Placed June deadline applicants	Quintile 1	105	145	130	130	130	150
	Quintile 2	200	250	240	230	275	260
	Quintile 3	370	320	315	370	355	390
	Quintile 4	525	485	550	595	620	670
	Quintile 5	860	840	1,010	1,040	1,140	1,215
All placed applicants	Quintile 1	110	150	135	130	135	150
	Quintile 2	210	260	245	235	280	260
	Quintile 3	390	335	325	380	370	395
	Quintile 4	555	490	575	610	645	675
	Quintile 5	920	865	1,035	1,060	1,185	1,225

P.20 Applications (all ages) by POLAR3 quintile

Statistic	POLAR3 quintile	2010	2011	2012	2013	2014	2015
June deadline applications	Quintile 1	975	1,025	990	1,065	1,150	1,345
	Quintile 2	1,525	1,615	1,595	1,610	1,790	2,140
	Quintile 3	2,360	2,160	2,095	2,370	2,670	3,110
	Quintile 4	3,365	3,245	3,175	3,645	4,105	4,710
	Quintile 5	5,415	5,385	5,585	6,215	7,070	8,175
Offers	Quintile 1	520	530	565	610	675	795
	Quintile 2	900	965	1,055	1,080	1,165	1,330
	Quintile 3	1,545	1,355	1,440	1,655	1,830	2,075
	Quintile 4	2,330	2,175	2,385	2,710	3,045	3,440
	Quintile 5	4,040	3,910	4,445	5,015	5,625	6,395
Offer rate	Quintile 1	53.1%	51.9%	57.0%	57.3%	58.9%	59.2%
	Quintile 2	59.1%	59.6%	66.1%	67.1%	65.2%	62.1%
	Quintile 3	65.5%	62.7%	68.7%	69.8%	68.5%	66.7%
	Quintile 4	69.2%	67.0%	75.2%	74.3%	74.2%	73.0%
	Quintile 5	74.6%	72.6%	79.6%	80.7%	79.5%	78.2%

P.21 Applicants (all ages) by ethnic group

Statistic	Ethnic group	2010	2011	2012	2013	2014	2015
June deadline applicants	Asian	980	990	1,040	1,350	1,575	1,965
	Black	405	435	445	480	630	720
	Mixed	470	505	495	635	735	885
	White	11,295	11,040	11,015	11,960	13,225	15,125
	Other	90	95	120	150	220	260
Placed June deadline applicants	Asian	105	125	110	125	175	195
	Black	30	30	25	40	40	50
	Mixed	75	65	70	95	110	105
	White	1,840	1,800	2,015	2,075	2,170	2,300
	Other	10	15	15	20	25	15
All placed applicants	Asian	125	135	115	130	190	200
	Black	35	30	25	40	45	50
	Mixed	80	65	75	105	115	105
	White	1,920	1,845	2,080	2,115	2,240	2,315
	Other	10	15	15	20	25	15

P.22 Applications (all ages) by ethnic group

Statistic	Ethnic group	2010	2011	2012	2013	2014	2015
June deadline applications	Asian	990	995	1,045	1,365	1,590	1,970
	Black	420	440	445	485	635	725
	Mixed	480	515	510	640	755	895
	White	11,590	11,300	11,270	12,200	13,520	15,500
	Other	90	100	120	150	225	260
Offers	Asian	665	695	780	965	1,135	1,390
	Black	155	180	180	225	290	355
	Mixed	310	320	355	485	540	630
	White	8,110	7,605	8,465	9,245	10,205	11,415
	Other	50	60	80	90	125	135
Offer rate	Asian	67.3%	70.1%	74.3%	70.7%	71.6%	70.6%
	Black	37.0%	41.3%	40.0%	46.1%	45.6%	48.9%
	Mixed	64.7%	62.3%	69.4%	75.6%	71.6%	70.6%
	White	70.0%	67.3%	75.1%	75.8%	75.5%	73.6%
	Other	52.2%	58.0%	67.5%	61.3%	55.8%	52.3%

Technical Notes and Definitions

UCAS undergraduate scheme

Adjustment

Adjustment allows applicants who have met and exceeded the terms of their conditional firm offer to seek and find a place at another provider whilst keeping their place at their original firm choice provider.

Clearing

Clearing is a route for applicants that are not placed and holding no offers to find a place on courses with vacancies.

Cycle year

The UCAS application cycle which runs from September to October the following year. For example the 2015 cycle runs from September 2014 through to October 2015.

End of cycle

The point in the cycle to which the numbers in this report refer, and the point at which the cycle is closed such that no more applications or offers can be made, and no more applicants can be placed. Numbers reported at the end of cycle exclude information on a small number of applicants who cancelled during the cycle.

Extra

Applicants who are unsuccessful in obtaining an offer or decline all offers may be eligible to apply through Extra, where they can apply to one further course at a time. Extra operates from 25 February until early July. It provides applicants who are eligible the possibility of obtaining an offer before exam results are published and Clearing starts.

June 30 deadline

The deadline for main scheme applications. Applicants who apply after this date will go directly into Clearing.

Record of Prior Acceptance (RPA)

RPA is an acceptance route used when a provider informs UCAS of applicants it has accepted outside of the normal application process (e.g. individuals who have applied directly to the provider).

Reporting groups

Ethnic group

High level grouping of ethnic origin as declared by the applicant: 'White', 'Black', 'Asian', 'Mixed', 'Other', 'Unknown'. Applicants who declare themselves as 'Unknown' ethnic origin are not reported in these tables, but are included in the associated csv data file.

POLAR3 quintile

Developed by HEFCE, POLAR3 classifies small areas across the UK into five groups according to their level of young participation in Higher Education. Each of these groups represents around 20 per cent of young people and is ranked from Quintile 1 (areas with the lowest young participation rates, considered as the most disadvantaged) to Quintile 5 (highest young participation rates, considered most advantaged). POLAR3 is based on the participation rates of young people between 2005 and 2009 who entered Higher Education between 2005-06 and 2010-11, therefore is most suitable for applicants aged 19 and under. These groups are assigned using the postcode declared by the applicant at the time of their application. If a UK postcode is invalid, considered unsafe for measurement or there is no link to Census geography possible then the applicant is not assigned to a quintile. Applicants with no POLAR3 quintile are not reported.

Sex

Sex as declared by the applicant.

SIMD quintile

Scottish index of multiple deprivation (SIMD) for 2012 identifies small area concentrations of multiple deprivation across all of Scotland, providing a relative measure of deprivation amongst 6505 small areas (data zones) based on 7 socio-economic domains. These small areas are classified into five groups ranked from Quintile 1 (considered the most deprived) to Quintile 5 (considered least deprived), with equal populations in each quintile. Quintiles are assigned using the postcode declared by the applicant, applicants declaring invalid postcodes are classified as 'Not assigned' and are not reported.

SIMD is only defined for applicants domiciled in Scotland, therefore any applicants domiciled outside of Scotland cannot be assigned to an SIMD quintile and so are not reported for this measure.

SIMD is only reported for providers in Scotland. Application and entry rates by SIMD are reported in the 2015 End of Cycle Report and the 2016 cycle January deadline application rate report.

Statistics reported in the tables

All placed applicants

The number of applicants placed for entry into higher education at the provider through one of their choices, including any choices made through Extra, or via Adjustment, Clearing or RPA.

All placed applicants per 10,000 population

The number of total UK domiciled 18 year old placed applicants for entry into higher education at the provider divided by the number of UK 18 year olds in the population, multiplied by 10,000. This gives the number of 18 year olds, for every 10,000 in the population, that were placed at the provider through one of their choices, including any choices made through Extra, or via Adjustment, Clearing or RPA. It is an alternative way of expressing the entry rate to a provider. By referencing the underlying population this statistic shows how the number of placed applicants is changing in relation to the available pool of potential applicants and so gives the chance that somebody from the group will be placed at a provider.

This statistic is only reported for 18 year olds.

Average offer rate

The offer rate that you might expect if the predicted grades and subject choice of applicants were the only factors that influenced whether an applicant was made an offer by the provider. The average offer rate is calculated by dividing applicants according to their specific combination of grades (for A levels the best three predicted grades are used, for BTECs, International Baccalaureate and Scottish Highers and Advanced Highers, predicted grades along with any grades already achieved upon applying are used) and subject choice. For each combination the number of main scheme offers is divided by the number of main scheme applications, to give an overall offer rate. This is then multiplied by the number of applications made by the group for which the average offer rate is being calculated (for example POLAR3 quintile 1), to give an average number of offers for that group. These average number of offers are then added together across all combinations of predicted grade and subject and divided by the number of main scheme applications from the group to give the average offer rate.

The average offer rate does not attempt to control for any other factors that may play a part in the decision to make an offer, such as the subject of the qualifications studied, their relevance to a course, or the grade in each subject; higher numbers of A levels being studied; the exact profile of grades predicted; personal statements; teacher references; interviews; or any other criteria (such as work experience or portfolios) that may be part of the admissions decision.

This statistic is only reported for 18 year olds.

Contribution of group to the average offer rate

The way in which the average offer rate is defined means that the pattern of application and offers of a group (for example POLAR3 quintile 1) will always contribute, in part, to the average offer rate for that group. When this contribution is large, the average offer rate will mainly reflect the patterns for the group, meaning that the value of the average offer rate will be similar to the offer rate, the percentage point difference statistic will be small, and any real difference between the offer rate and what might be expected given the predicted grades and subject choices of the applicants will be difficult to detect.

Values of the contribution of group to the average offer rate range between 0 and 1. The closer the value is to 1 the greater the contribution a group makes to its own average offer rate.

This statistic is only reported for 18 year olds.

Placed June deadline applicants

An applicant who has been placed for entry into higher education at the provider through a June deadline application.

Placed June deadline applicants per 10,000 population

The number of UK domiciled 18 year old placed June deadline applicants at the provider divided by the number of UK 18 year olds in the population, multiplied by 10,000. This gives the number of 18 year olds, for every 10,000 in the population, that were placed at the provider through one of their June deadline applications. It is an alternative way of expressing the entry rate to a provider, but for placed June deadline applicants only. By referencing the underlying population this statistic shows how the number of placed June deadline applicants is changing in relation to the available pool of potential 18 year old applicants and so gives the chance that somebody from the group will be placed at a provider through a June deadline application.

This statistic is only reported for 18 year olds.

June deadline applications

An application (or choice) to a course in higher education to the provider that is made by the June 30 deadline. Each applicant can make up to five choices this way. The number of June deadline applications does not include choices made through the following routes: Clearing, Extra, Adjustment and RPAs. Applications made to October deadline courses received after the October deadline are not included in these statistics.

June deadline applicants

The number of applicants that made at least one application to the provider by the June 30 deadline.

June deadline applicants per 10,000 population

The number of UK domiciled 18 year old June deadline applicants to the provider divided by the number of UK 18 year olds in the population, multiplied by 10,000. This gives the number of 18 year olds, for every 10,000 in the population, who applied by the June 30 deadline. It is equivalent to the application rate. By referencing the underlying population this statistic shows how the number of June deadline applicants is changing in relation to the available pool of potential 18 year old applicants and so gives the chance that somebody from the group will apply to a provider by the June 30 deadline.

This statistic is only reported for 18 year olds.

Offers

An offer is defined as a provider's decision in response to an application to offer a place to an applicant, often subject to the applicant satisfying academic and/or other criteria, via a June deadline application (i.e. does not cover choices made through the following routes: Clearing, Extra, Adjustment and RPAs).

Offer rate

The number of offers made divided by the number of June deadline applications. This gives the proportion of all June deadline applications to the provider that received an offer.

Percentage point difference between offer rate and average offer rate

The offer rate minus the average offer rate.

The percentage point difference can be compared to the expected range of statistical variation resulting from the calculation of the average offer rate using the Average Offer Rate Lookup Table. Where the value of the percentage point difference lies outside of this range, the percentage point difference may be considered to represent a real difference between the offer rate and the average offer rate.

Other definitions

Age

This analysis uses country-specific age definitions that align with the cut off points for school and college cohorts within the different administrations of the UK. For England and Wales, ages are defined on the 31 August, for Northern Ireland on the 1 July and for Scotland on the 28 February the following year. Defining ages in this way matches the assignment of children to school cohorts. For applicants outside of the UK a cohort cut off of 31 August has been used.

Provider

A higher education provider - a university or college.

UK domiciled

Declared area of permanent residence within England, Northern Ireland, Scotland and Wales. Applicants from the Channel Islands and Isle of Man are not included.