

B32 The University of Birmingham

Cycle years: 2010 - 2015

Cycle Reference Point: End of Cycle

Applicant coverage: UK domiciled

Reporting groups: Sex, POLAR3, ethnic group

Applicant statistics: June deadline applicants, placed June deadline applicants, all placed applicants, June deadline applicants per 10,000 population, placed June deadline applicants per 10,000 population, all placed applicants per 10,000 population

Application statistics: June deadline applications, offers, offer rate, average offer rate, percentage point difference between offer rate and average offer rate, contribution of group to the average offer rate

Non-disclosure controls: To avoid the disclosure of information about any individual the following measures are taken

- Applicants, placed applicants, applications and offers are rounded to the nearest 5.
- Applicants/placed applicants per 10,000 population figures are reported as 0 if the applicant/placed applicant figures are rounded to 0.
- All statistics related to the offer rate are not reported when the number of applications for a group is less than 10. The percentage point difference between the offer rate and the average offer rate is not reported when the number of applications for a group is less than 50.
- Offer rates are reported as 0% if there are fewer than 5 offers, and 100% if the number of offers is within 5 of the number of applications. When the offer rate is reported as 0% or 100%, it is reported in italics.

Contents:

18 year old applicants:	P.1
18 year old applications:	P.2
18 year old applicants by sex:	P.3
18 year old applications by sex:	P.4
18 year old applicants by POLAR3 quintile:	P.7
18 year old applications by POLAR3 quintile:	P.8
18 year old applicants by ethnic group:	P.11
18 year old applications by ethnic group:	P.12
Applicants (all ages):	P.15
Applications (all ages):	P.16
Applicants (all ages) by sex:	P.17
Applications (all ages) by sex:	P.18
Applicants (all ages) by POLAR3 quintile:	P.19
Applications (all ages) by POLAR3 quintile:	P.20
Applicants (all ages) by ethnic group:	P.21
Applications (all ages) by ethnic group:	P.22

P.1 18 year old applicants

Statistic	2010	2011	2012	2013	2014	2015
June deadline applicants	22,800	22,525	21,260	20,900	23,995	25,475
Placed June deadline applicants	3,465	3,510	3,370	3,775	4,120	4,255
All placed applicants	3,500	3,570	3,580	3,975	4,310	4,340
June deadline applicants per 10,000 population	288.8	292.5	274.8	274.6	318.6	332.5
Placed June deadline applicants per 10,000	43.9	45.6	43.6	49.6	54.7	55.5
All placed applicants per 10,000 population	44.4	46.3	46.3	52.2	57.2	56.6

P.2 18 year old applications

Statistic	2010	2011	2012	2013	2014	2015
June deadline applications	23,805	23,450	22,070	21,635	24,860	26,355
Offers	18,290	17,580	16,840	17,315	19,795	20,870
Offer rate	76.8%	75.0%	76.3%	80.0%	79.6%	79.2%

P.3 18 year old applicants by sex

Statistic	Sex	2010	2011	2012	2013	2014	2015
June deadline applicants	Men	10,575	10,380	9,685	9,670	11,210	11,410
	Women	12,225	12,140	11,575	11,230	12,785	14,065
Placed June deadline applicants	Men	1,520	1,475	1,450	1,645	1,775	1,770
	Women	1,945	2,035	1,925	2,125	2,340	2,485
All placed applicants	Men	1,530	1,490	1,540	1,730	1,855	1,810
	Women	1,970	2,075	2,035	2,240	2,450	2,530
June deadline applicants per 10,000 population	Men	263.3	263.8	244.2	247.7	289.6	290.8
	Women	315.2	322.4	307.0	303.0	349.2	376.3
Placed June deadline applicants per 10,000 population	Men	37.8	37.4	36.5	42.2	45.9	45.1
	Women	50.2	54.1	51.0	57.4	64.0	66.5
All placed applicants per 10,000 population	Men	38.1	37.9	38.9	44.4	47.9	46.1
	Women	50.8	55.1	54.0	60.5	67.0	67.7

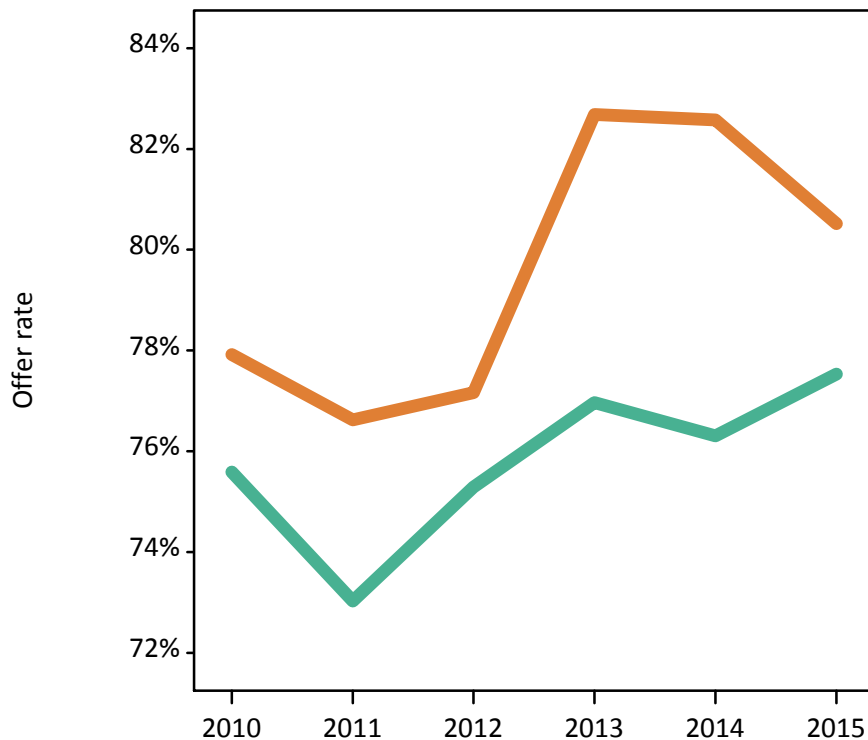
P.4 18 year old applications by sex

Statistic	Sex	2010	2011	2012	2013	2014	2015
June deadline applications	Men	11,025	10,795	10,095	10,015	11,650	11,795
	Women	12,780	12,655	11,975	11,620	13,210	14,560
Offers	Men	8,335	7,885	7,600	7,710	8,890	9,145
	Women	9,960	9,695	9,240	9,610	10,910	11,725
Offer rate	Men	75.6%	73.0%	75.3%	77.0%	76.3%	77.5%
	Women	77.9%	76.6%	77.2%	82.7%	82.6%	80.5%
Average offer rate	Men	76.5%	73.9%	76.1%	77.9%	77.1%	78.1%
	Women	77.1%	75.8%	76.5%	81.9%	81.8%	80.0%
Percentage point difference between offer rate and average offer rate	Men	-0.9	-0.9	-0.8	-0.9	-0.8	-0.6
	Women	0.8	0.8	0.7	0.8	0.7	0.5
Contribution of group to the average offer rate	Men	0.579	0.573	0.582	0.586	0.593	0.577
	Women	0.637	0.636	0.647	0.643	0.641	0.657

P.5 18 year old offer rate by sex

Note: The line for a group is not plotted when that group made fewer than 10 applications in any of the years from 2010-2015.

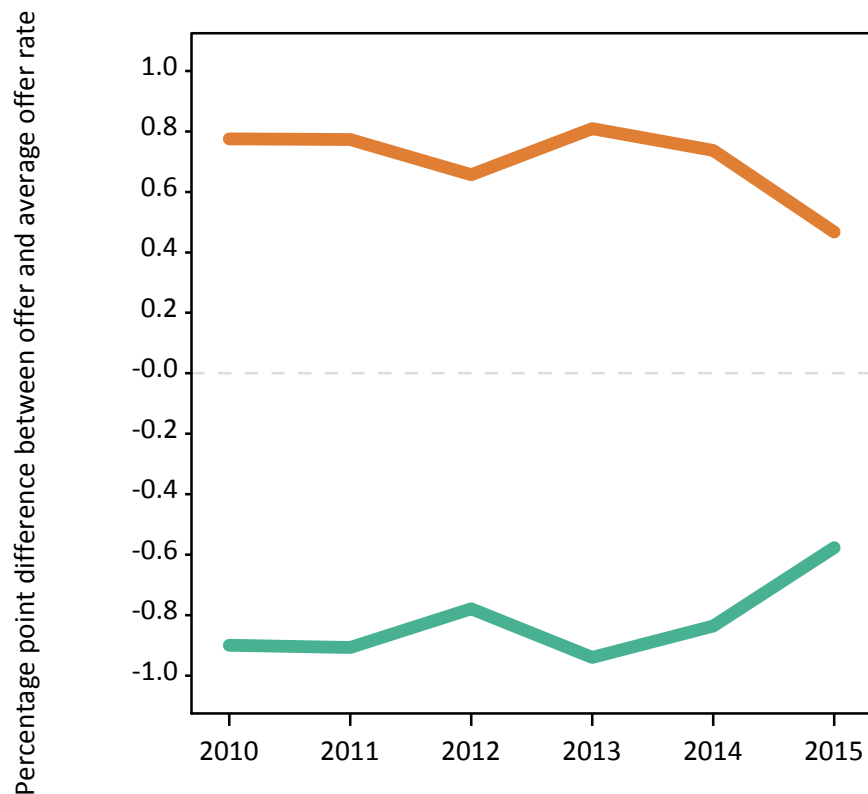
Men
Women



P.6 Percentage point difference between 18 year old offer rate and average offer rate by sex

Note: The line for a group is not plotted when that group made fewer than 50 applications in any of the years from 2010-2015.

Men
Women



P.7 18 year old applicants by POLAR3 quintile

Statistic	POLAR3 quintile	2010	2011	2012	2013	2014	2015
June deadline applicants	Quintile 1	1,505	1,510	1,430	1,475	1,735	1,905
	Quintile 2	2,810	2,680	2,665	2,770	3,275	3,435
	Quintile 3	3,785	3,780	3,405	3,565	4,075	4,485
	Quintile 4	5,180	5,015	4,720	4,665	5,250	5,580
	Quintile 5	9,475	9,505	9,000	8,395	9,625	10,030
Placed June deadline applicants	Quintile 1	190	205	195	240	255	280
	Quintile 2	385	390	420	495	535	500
	Quintile 3	540	580	510	620	695	760
	Quintile 4	825	780	775	815	885	960
	Quintile 5	1,520	1,545	1,470	1,600	1,750	1,750
All placed applicants	Quintile 1	190	215	205	255	260	285
	Quintile 2	395	400	445	520	555	510
	Quintile 3	545	590	555	675	735	775
	Quintile 4	830	790	815	845	930	980
	Quintile 5	1,535	1,570	1,560	1,675	1,830	1,780
June deadline applicants per 10,000 population	Quintile 1	101.7	105.0	100.3	105.8	124.8	135.9
	Quintile 2	182.9	178.1	177.8	187.9	223.9	231.1
	Quintile 3	238.1	245.6	220.6	233.9	270.8	292.2
	Quintile 4	325.3	320.1	297.6	298.4	340.6	356.3
	Quintile 5	559.1	574.4	535.7	507.8	590.2	599.1
Placed June deadline applicants per 10,000 population	Quintile 1	12.9	14.3	13.8	17.2	18.2	19.8
	Quintile 2	25.0	26.0	27.9	33.7	36.5	33.7
	Quintile 3	34.0	37.8	33.1	40.8	46.2	49.6
	Quintile 4	51.7	49.7	48.8	52.0	57.3	61.5
	Quintile 5	89.7	93.5	87.4	96.7	107.3	104.5
All placed applicants per 10,000 population	Quintile 1	13.0	14.9	14.4	18.3	18.7	20.5
	Quintile 2	25.6	26.5	29.5	35.4	37.8	34.5
	Quintile 3	34.3	38.3	35.9	44.1	48.7	50.6
	Quintile 4	52.2	50.3	51.4	54.0	60.3	62.5
	Quintile 5	90.6	95.0	92.7	101.4	112.1	106.4

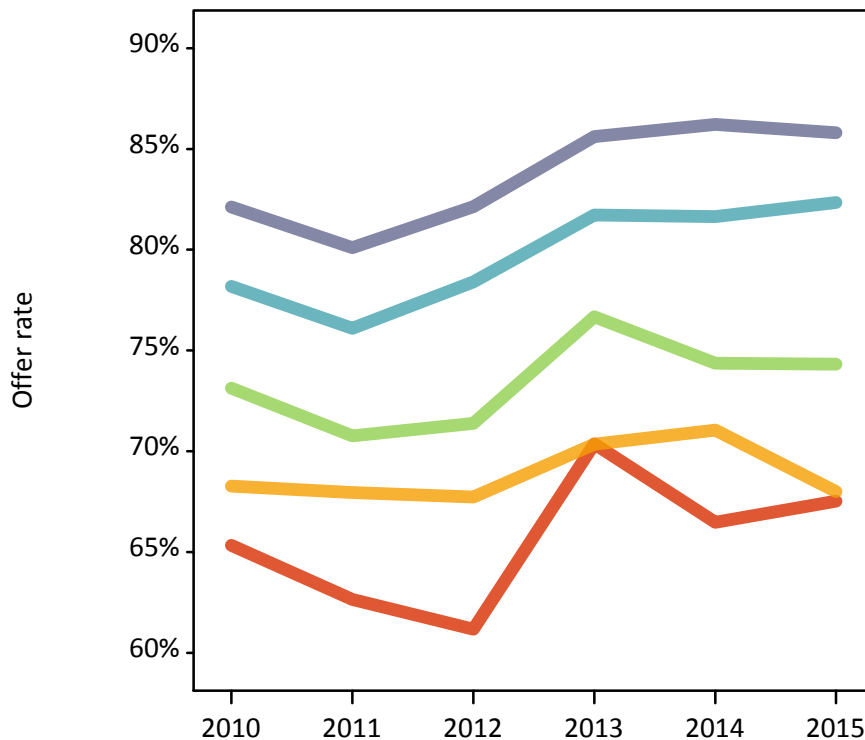
P.8 18 year old applications by POLAR3 quintile

Statistic	POLAR3 quintile	2010	2011	2012	2013	2014	2015
June deadline applications	Quintile 1	1,575	1,580	1,495	1,550	1,805	1,990
	Quintile 2	2,995	2,845	2,815	2,920	3,455	3,600
	Quintile 3	4,020	3,970	3,550	3,710	4,275	4,675
	Quintile 4	5,340	5,170	4,895	4,800	5,390	5,740
	Quintile 5	9,830	9,840	9,285	8,630	9,900	10,305
Offers	Quintile 1	1,030	990	915	1,090	1,200	1,345
	Quintile 2	2,045	1,935	1,905	2,055	2,455	2,450
	Quintile 3	2,940	2,810	2,535	2,845	3,180	3,475
	Quintile 4	4,175	3,935	3,840	3,925	4,400	4,725
	Quintile 5	8,070	7,880	7,625	7,390	8,535	8,845
Offer rate	Quintile 1	65.3%	62.6%	61.2%	70.4%	66.5%	67.5%
	Quintile 2	68.3%	68.0%	67.7%	70.4%	71.1%	68.0%
	Quintile 3	73.1%	70.8%	71.4%	76.7%	74.4%	74.3%
	Quintile 4	78.2%	76.1%	78.4%	81.7%	81.6%	82.3%
	Quintile 5	82.1%	80.1%	82.1%	85.6%	86.2%	85.8%
Average offer rate	Quintile 1	67.8%	66.0%	64.2%	72.8%	69.3%	68.6%
	Quintile 2	69.9%	69.0%	69.1%	71.4%	71.2%	69.5%
	Quintile 3	74.3%	72.1%	72.3%	76.8%	75.4%	75.1%
	Quintile 4	77.8%	75.9%	78.0%	81.6%	81.3%	82.3%
	Quintile 5	81.0%	78.9%	81.1%	84.8%	85.4%	84.7%
Percentage point difference between offer rate and average offer rate	Quintile 1	-2.4	-3.3	-3.0	-2.4	-2.8	-1.1
	Quintile 2	-1.6	-1.1	-1.4	-1.0	-0.1	-1.5
	Quintile 3	-1.2	-1.3	-0.9	-0.1	-1.1	-0.8
	Quintile 4	0.4	0.2	0.4	0.1	0.3	0.1
	Quintile 5	1.1	1.3	1.1	0.8	0.8	1.1
Contribution of group to the average offer rate	Quintile 1	0.148	0.146	0.156	0.142	0.136	0.136
	Quintile 2	0.196	0.192	0.198	0.208	0.207	0.202
	Quintile 3	0.223	0.218	0.216	0.222	0.214	0.220
	Quintile 4	0.267	0.260	0.264	0.263	0.253	0.252
	Quintile 5	0.467	0.474	0.477	0.457	0.455	0.447

P.9 18 year old offer rate by POLAR3 quintile

Note: The line for a group is not plotted when that group made fewer than 10 applications in any of the years from 2010-2015.

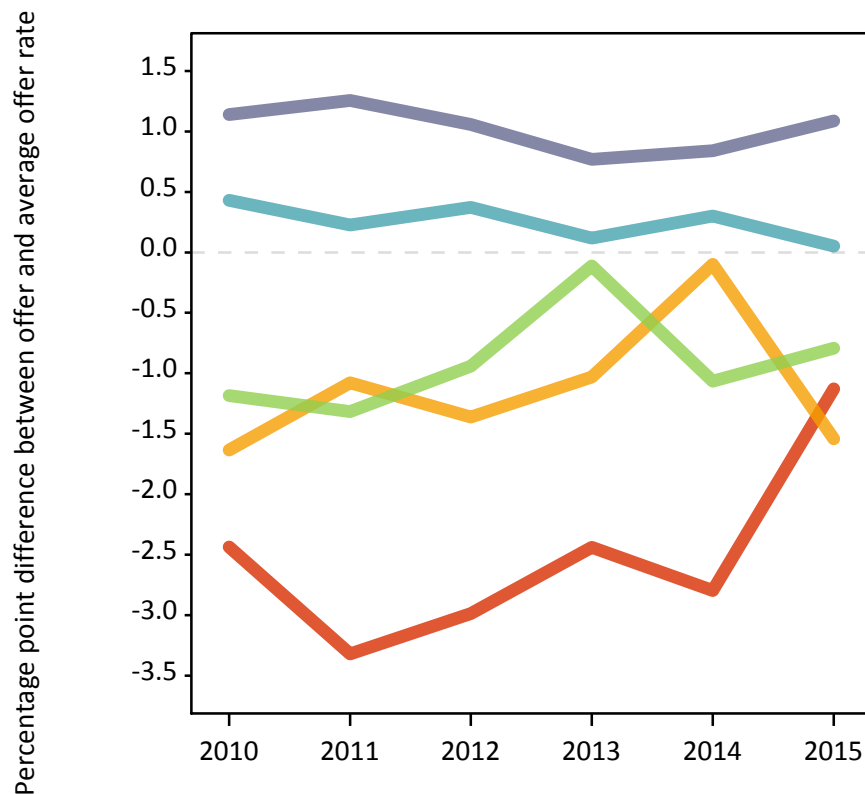
- Quintile 1
- Quintile 2
- Quintile 3
- Quintile 4
- Quintile 5



P.10 Percentage point difference between 18 year old offer rate and average offer rate by POLAR3 quintile

Note: The line for a group is not plotted when that group made fewer than 50 applications in any of the years from 2010-2015.

- Quintile 1
- Quintile 2
- Quintile 3
- Quintile 4
- Quintile 5



P.11 18 year old applicants by ethnic group

Statistic	Ethnic group	2010	2011	2012	2013	2014	2015
June deadline applicants	Asian	3,320	3,200	3,045	3,125	3,640	4,085
	Black	880	850	825	965	1,325	1,605
	Mixed	760	895	825	850	1,060	1,240
	White	17,515	17,240	16,235	15,640	17,550	18,000
	Other	185	195	195	200	285	335
Placed June deadline applicants	Asian	445	450	425	565	545	620
	Black	70	80	85	135	180	195
	Mixed	120	120	120	160	185	195
	White	2,790	2,805	2,705	2,870	3,150	3,160
	Other	20	25	20	25	35	50
All placed applicants	Asian	460	455	475	635	595	645
	Black	75	85	95	145	195	205
	Mixed	120	125	125	170	195	205
	White	2,805	2,850	2,835	2,970	3,255	3,205
	Other	20	25	25	30	40	50
June deadline applicants per 10,000 population	Asian	536.7	508.1	470.5	473.5	536.9	577.6
	Black	335.8	310.5	293.7	325.4	437.1	504.7
	Mixed	327.6	368.7	317.1	314.7	369.1	402.2
	White	261.2	266.3	251.5	248.6	284.4	288.9
	Other	239.0	240.7	219.2	218.4	305.1	346.8
Placed June deadline applicants per 10,000 population	Asian	71.7	71.1	65.8	86.0	80.4	87.3
	Black	27.5	30.0	29.5	45.8	59.4	61.6
	Mixed	51.8	50.4	45.7	59.5	65.0	63.9
	White	41.6	43.4	41.9	45.6	51.1	50.7
	Other	28.6	33.3	22.6	26.5	37.6	53.0
All placed applicants per 10,000 population	Asian	74.1	72.4	73.2	96.6	87.9	90.9
	Black	28.3	31.8	34.1	49.5	64.0	64.1
	Mixed	52.7	52.0	48.8	63.2	68.5	65.8
	White	41.9	44.0	43.9	47.2	52.8	51.4
	Other	28.6	33.3	29.4	33.1	44.0	54.0

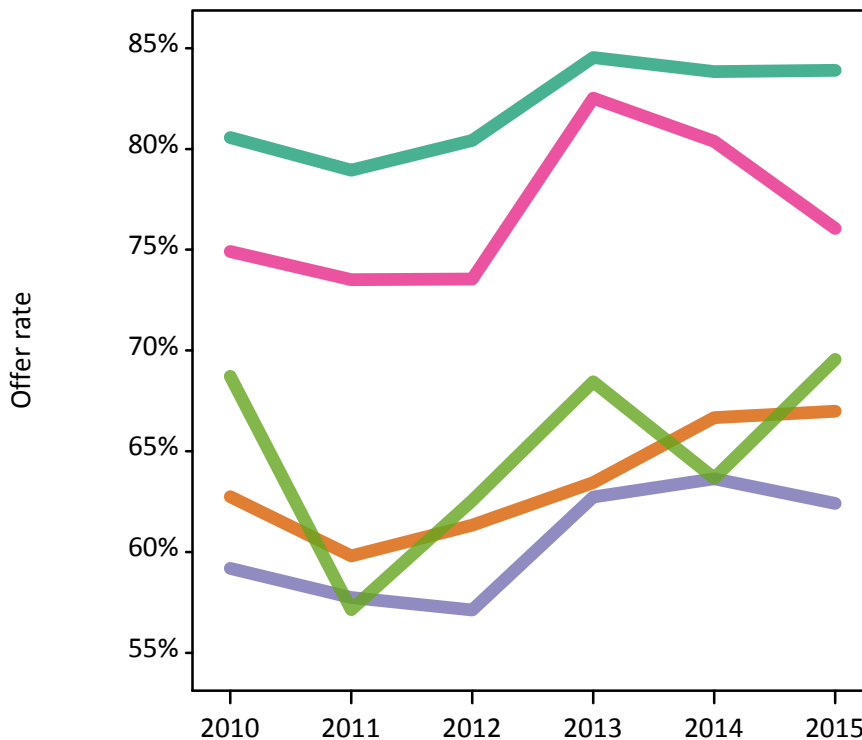
P.12 18 year old applications by ethnic group

Statistic	Ethnic group	2010	2011	2012	2013	2014	2015
June deadline applications	Asian	3,540	3,385	3,200	3,285	3,845	4,310
	Black	905	865	840	980	1,375	1,635
	Mixed	795	920	860	880	1,085	1,280
	White	18,220	17,915	16,835	16,155	18,125	18,570
	Other	195	210	205	205	290	345
Offers	Asian	2,220	2,025	1,965	2,085	2,565	2,885
	Black	535	500	480	615	875	1,020
	Mixed	595	675	630	725	870	970
	White	14,680	14,145	13,540	13,655	15,195	15,585
	Other	135	120	125	140	185	240
Offer rate	Asian	62.7%	59.8%	61.3%	63.5%	66.7%	67.0%
	Black	59.2%	57.7%	57.1%	62.7%	63.6%	62.4%
	Mixed	74.9%	73.5%	73.5%	82.5%	80.4%	76.1%
	White	80.6%	78.9%	80.4%	84.5%	83.8%	83.9%
	Other	68.7%	57.1%	62.6%	68.4%	63.7%	69.6%
Average offer rate	Asian	66.3%	62.5%	64.0%	64.8%	68.7%	69.1%
	Black	63.4%	62.1%	62.8%	66.6%	66.5%	66.6%
	Mixed	74.6%	73.4%	73.7%	81.9%	80.4%	76.5%
	White	79.7%	78.2%	79.6%	84.0%	83.1%	83.0%
	Other	66.6%	61.9%	64.4%	68.6%	66.7%	69.2%
Percentage point difference between offer rate and average offer rate	Asian	-3.5	-2.7	-2.6	-1.3	-2.0	-2.1
	Black	-4.2	-4.4	-5.7	-3.9	-2.9	-4.2
	Mixed	0.3	0.1	-0.1	0.6	-0.1	-0.5
	White	0.8	0.8	0.8	0.5	0.7	0.9
	Other	2.1	-4.7	-1.8	-0.1	-3.0	0.4
Contribution of group to the average offer rate	Asian	0.323	0.306	0.296	0.321	0.290	0.294
	Black	0.136	0.128	0.137	0.150	0.147	0.140
	Mixed	0.088	0.087	0.109	0.088	0.091	0.093
	White	0.813	0.807	0.805	0.798	0.773	0.752
	Other	0.083	0.065	0.062	0.088	0.071	0.060

P.13 18 year old offer rate by ethnic group

Note: The line for a group is not plotted when that group made fewer than 10 applications in any of the years from 2010-2015.

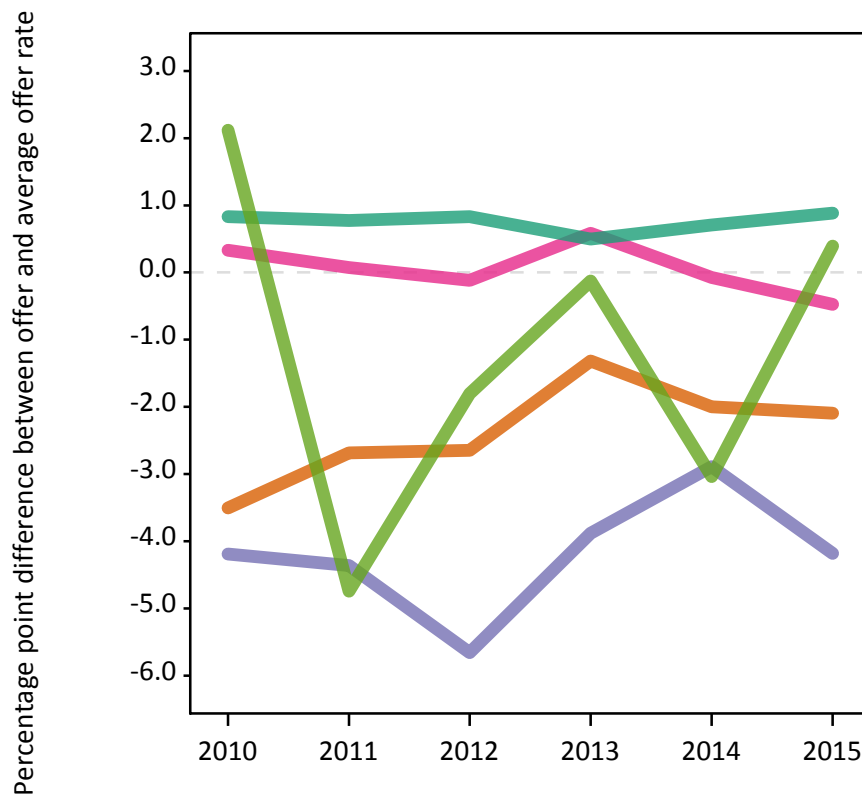
- Asian
- Black
- Mixed
- White
- Other



P.14 Percentage point difference between 18 year old offer rate and average offer rate by ethnic group

Note: The line for a group is not plotted when that group made fewer than 50 applications in any of the years from 2010-2015.

- Asian
- Black
- Mixed
- White
- Other



P.15 Applicants (all ages)

Statistic	2010	2011	2012	2013	2014	2015
June deadline applicants	33,805	33,675	30,745	31,460	35,400	37,450
Placed June deadline applicants	4,785	4,830	4,330	4,970	5,295	5,400
All placed applicants	4,870	4,920	4,625	5,265	5,570	5,555

P.16 Applications (all ages)

Statistic	2010	2011	2012	2013	2014	2015
June deadline applications	35,565	35,370	32,035	32,780	36,875	39,020
Offers	23,120	22,535	20,575	21,805	24,685	26,175
Offer rate	65.0%	63.7%	64.2%	66.5%	66.9%	67.1%

P.17 Applicants (all ages) by sex

Statistic	Sex	2010	2011	2012	2013	2014	2015
June deadline applicants	Men	15,720	15,635	13,880	14,300	16,390	16,860
	Women	18,085	18,040	16,870	17,160	19,010	20,590
Placed June deadline applicants	Men	2,120	2,075	1,880	2,175	2,275	2,285
	Women	2,665	2,755	2,450	2,795	3,020	3,115
All placed applicants	Men	2,145	2,110	2,020	2,300	2,395	2,350
	Women	2,725	2,810	2,605	2,965	3,175	3,205

P.18 Applications (all ages) by sex

Statistic	Sex	2010	2011	2012	2013	2014	2015
June deadline applications	Men	16,535	16,420	14,545	14,930	17,120	17,595
	Women	19,030	18,955	17,490	17,845	19,755	21,425
Offers	Men	10,655	10,250	9,435	9,885	11,200	11,750
	Women	12,465	12,280	11,140	11,920	13,485	14,425
Offer rate	Men	64.4%	62.4%	64.9%	66.2%	65.4%	66.8%
	Women	65.5%	64.8%	63.7%	66.8%	68.3%	67.3%

P.19 Applicants (all ages) by POLAR3 quintile

Statistic	POLAR3 quintile	2010	2011	2012	2013	2014	2015
June deadline applicants	Quintile 1	2,700	2,780	2,690	2,815	3,185	3,375
	Quintile 2	4,870	4,715	4,585	4,865	5,630	5,765
	Quintile 3	6,015	5,920	5,305	5,800	6,340	7,015
	Quintile 4	7,355	7,215	6,510	6,665	7,455	7,840
	Quintile 5	12,775	12,965	11,590	11,245	12,735	13,360
Placed June deadline applicants	Quintile 1	290	315	285	335	350	390
	Quintile 2	580	570	590	705	760	680
	Quintile 3	775	840	685	865	900	1,000
	Quintile 4	1,110	1,040	955	1,065	1,125	1,185
	Quintile 5	2,025	2,055	1,810	1,995	2,150	2,140
All placed applicants	Quintile 1	290	330	305	365	370	400
	Quintile 2	605	585	630	750	790	705
	Quintile 3	785	850	745	925	955	1,030
	Quintile 4	1,120	1,060	1,020	1,115	1,190	1,215
	Quintile 5	2,055	2,090	1,925	2,105	2,260	2,190

P.20 Applications (all ages) by POLAR3 quintile

Statistic	POLAR3 quintile	2010	2011	2012	2013	2014	2015
June deadline applications	Quintile 1	2,850	2,940	2,830	2,955	3,335	3,555
	Quintile 2	5,210	5,045	4,855	5,170	5,950	6,085
	Quintile 3	6,425	6,280	5,545	6,090	6,670	7,335
	Quintile 4	7,655	7,510	6,745	6,890	7,695	8,140
	Quintile 5	13,335	13,515	11,995	11,600	13,160	13,805
Offers	Quintile 1	1,425	1,365	1,235	1,480	1,615	1,785
	Quintile 2	2,720	2,615	2,450	2,735	3,225	3,250
	Quintile 3	3,780	3,665	3,200	3,705	4,065	4,500
	Quintile 4	5,245	5,005	4,645	4,870	5,455	5,800
	Quintile 5	9,905	9,835	9,020	8,985	10,295	10,790
Offer rate	Quintile 1	50.0%	46.5%	43.5%	50.1%	48.4%	50.2%
	Quintile 2	52.2%	51.9%	50.4%	52.9%	54.3%	53.4%
	Quintile 3	58.8%	58.3%	57.7%	60.8%	60.9%	61.4%
	Quintile 4	68.5%	66.7%	68.8%	70.7%	70.9%	71.3%
	Quintile 5	74.3%	72.8%	75.2%	77.5%	78.2%	78.2%

P.21 Applicants (all ages) by ethnic group

Statistic	Ethnic group	2010	2011	2012	2013	2014	2015
June deadline applicants	Asian	5,475	5,385	4,865	5,415	6,020	6,800
	Black	2,510	2,475	2,450	2,605	3,020	3,460
	Mixed	1,310	1,450	1,265	1,380	1,685	1,880
	White	23,895	23,735	21,525	21,360	23,875	24,305
	Other	350	360	405	420	540	615
Placed June deadline applicants	Asian	655	695	630	815	765	875
	Black	145	155	155	225	240	280
	Mixed	175	175	160	230	245	250
	White	3,735	3,725	3,330	3,625	3,955	3,880
	Other	35	40	30	40	50	65
All placed applicants	Asian	680	715	710	915	850	925
	Black	150	165	180	250	265	295
	Mixed	180	185	170	245	260	255
	White	3,780	3,785	3,495	3,775	4,090	3,960
	Other	35	40	40	45	55	70

P.22 Applications (all ages) by ethnic group

Statistic	Ethnic group	2010	2011	2012	2013	2014	2015
June deadline applications	Asian	5,865	5,755	5,135	5,740	6,365	7,195
	Black	2,625	2,560	2,525	2,695	3,135	3,550
	Mixed	1,375	1,505	1,325	1,440	1,745	1,950
	White	25,050	24,875	22,380	22,170	24,790	25,260
	Other	370	385	420	440	555	650
Offers	Asian	3,070	2,925	2,685	2,980	3,520	4,055
	Black	865	805	755	945	1,225	1,480
	Mixed	840	900	805	945	1,140	1,245
	White	17,970	17,565	16,005	16,570	18,365	18,820
	Other	190	165	190	215	270	340
Offer rate	Asian	52.3%	50.8%	52.3%	51.9%	55.3%	56.4%
	Black	32.9%	31.4%	29.8%	35.0%	39.1%	41.7%
	Mixed	61.2%	59.9%	60.8%	65.5%	65.3%	63.9%
	White	71.7%	70.6%	71.5%	74.8%	74.1%	74.5%
	Other	51.8%	43.0%	44.5%	48.6%	48.8%	51.9%

Technical Notes and Definitions

UCAS undergraduate scheme

Adjustment

Adjustment allows applicants who have met and exceeded the terms of their conditional firm offer to seek and find a place at another provider whilst keeping their place at their original firm choice provider.

Clearing

Clearing is a route for applicants that are not placed and holding no offers to find a place on courses with vacancies.

Cycle year

The UCAS application cycle which runs from September to October the following year. For example the 2015 cycle runs from September 2014 through to October 2015.

End of cycle

The point in the cycle to which the numbers in this report refer, and the point at which the cycle is closed such that no more applications or offers can be made, and no more applicants can be placed. Numbers reported at the end of cycle exclude information on a small number of applicants who cancelled during the cycle.

Extra

Applicants who are unsuccessful in obtaining an offer or decline all offers may be eligible to apply through Extra, where they can apply to one further course at a time. Extra operates from 25 February until early July. It provides applicants who are eligible the possibility of obtaining an offer before exam results are published and Clearing starts.

June 30 deadline

The deadline for main scheme applications. Applicants who apply after this date will go directly into Clearing.

Record of Prior Acceptance (RPA)

RPA is an acceptance route used when a provider informs UCAS of applicants it has accepted outside of the normal application process (e.g. individuals who have applied directly to the provider).

Reporting groups

Ethnic group

High level grouping of ethnic origin as declared by the applicant: 'White', 'Black', 'Asian', 'Mixed', 'Other', 'Unknown'. Applicants who declare themselves as 'Unknown' ethnic origin are not reported in these tables, but are included in the associated csv data file.

POLAR3 quintile

Developed by HEFCE, POLAR3 classifies small areas across the UK into five groups according to their level of young participation in Higher Education. Each of these groups represents around 20 per cent of young people and is ranked from Quintile 1 (areas with the lowest young participation rates, considered as the most disadvantaged) to Quintile 5 (highest young participation rates, considered most advantaged). POLAR3 is based on the participation rates of young people between 2005 and 2009 who entered Higher Education between 2005-06 and 2010-11, therefore is most suitable for applicants aged 19 and under. These groups are assigned using the postcode declared by the applicant at the time of their application. If a UK postcode is invalid, considered unsafe for measurement or there is no link to Census geography possible then the applicant is not assigned to a quintile. Applicants with no POLAR3 quintile are not reported.

Sex

Sex as declared by the applicant.

SIMD quintile

Scottish index of multiple deprivation (SIMD) for 2012 identifies small area concentrations of multiple deprivation across all of Scotland, providing a relative measure of deprivation amongst 6505 small areas (data zones) based on 7 socio-economic domains. These small areas are classified into five groups ranked from Quintile 1 (considered the most deprived) to Quintile 5 (considered least deprived), with equal populations in each quintile. Quintiles are assigned using the postcode declared by the applicant, applicants declaring invalid postcodes are classified as 'Not assigned' and are not reported.

SIMD is only defined for applicants domiciled in Scotland, therefore any applicants domiciled outside of Scotland cannot be assigned to an SIMD quintile and so are not reported for this measure.

SIMD is only reported for providers in Scotland. Application and entry rates by SIMD are reported in the 2015 End of Cycle Report and the 2016 cycle January deadline application rate report.

Statistics reported in the tables

All placed applicants

The number of applicants placed for entry into higher education at the provider through one of their choices, including any choices made through Extra, or via Adjustment, Clearing or RPA.

All placed applicants per 10,000 population

The number of total UK domiciled 18 year old placed applicants for entry into higher education at the provider divided by the number of UK 18 year olds in the population, multiplied by 10,000. This gives the number of 18 year olds, for every 10,000 in the population, that were placed at the provider through one of their choices, including any choices made through Extra, or via Adjustment, Clearing or RPA. It is an alternative way of expressing the entry rate to a provider. By referencing the underlying population this statistic shows how the number of placed applicants is changing in relation to the available pool of potential applicants and so gives the chance that somebody from the group will be placed at a provider.

This statistic is only reported for 18 year olds.

Average offer rate

The offer rate that you might expect if the predicted grades and subject choice of applicants were the only factors that influenced whether an applicant was made an offer by the provider. The average offer rate is calculated by dividing applicants according to their specific combination of grades (for A levels the best three predicted grades are used, for BTECs, International Baccalaureate and Scottish Highers and Advanced Highers, predicted grades along with any grades already achieved upon applying are used) and subject choice. For each combination the number of main scheme offers is divided by the number of main scheme applications, to give an overall offer rate. This is then multiplied by the number of applications made by the group for which the average offer rate is being calculated (for example POLAR3 quintile 1), to give an average number of offers for that group. These average number of offers are then added together across all combinations of predicted grade and subject and divided by the number of main scheme applications from the group to give the average offer rate.

The average offer rate does not attempt to control for any other factors that may play a part in the decision to make an offer, such as the subject of the qualifications studied, their relevance to a course, or the grade in each subject; higher numbers of A levels being studied; the exact profile of grades predicted; personal statements; teacher references; interviews; or any other criteria (such as work experience or portfolios) that may be part of the admissions decision.

This statistic is only reported for 18 year olds.

Contribution of group to the average offer rate

The way in which the average offer rate is defined means that the pattern of application and offers of a group (for example POLAR3 quintile 1) will always contribute, in part, to the average offer rate for that group. When this contribution is large, the average offer rate will mainly reflect the patterns for the group, meaning that the value of the average offer rate will be similar to the offer rate, the percentage point difference statistic will be small, and any real difference between the offer rate and what might be expected given the predicted grades and subject choices of the applicants will be difficult to detect.

Values of the contribution of group to the average offer rate range between 0 and 1. The closer the value is to 1 the greater the contribution a group makes to its own average offer rate.

This statistic is only reported for 18 year olds.

Placed June deadline applicants

An applicant who has been placed for entry into higher education at the provider through a June deadline application.

Placed June deadline applicants per 10,000 population

The number of UK domiciled 18 year old placed June deadline applicants at the provider divided by the number of UK 18 year olds in the population, multiplied by 10,000. This gives the number of 18 year olds, for every 10,000 in the population, that were placed at the provider through one of their June deadline applications. It is an alternative way of expressing the entry rate to a provider, but for placed June deadline applicants only. By referencing the underlying population this statistic shows how the number of placed June deadline applicants is changing in relation to the available pool of potential 18 year old applicants and so gives the chance that somebody from the group will be placed at a provider through a June deadline application.

This statistic is only reported for 18 year olds.

June deadline applications

An application (or choice) to a course in higher education to the provider that is made by the June 30 deadline. Each applicant can make up to five choices this way. The number of June deadline applications does not include choices made through the following routes: Clearing, Extra, Adjustment and RPAs. Applications made to October deadline courses received after the October deadline are not included in these statistics.

June deadline applicants

The number of applicants that made at least one application to the provider by the June 30 deadline.

June deadline applicants per 10,000 population

The number of UK domiciled 18 year old June deadline applicants to the provider divided by the number of UK 18 year olds in the population, multiplied by 10,000. This gives the number of 18 year olds, for every 10,000 in the population, who applied by the June 30 deadline. It is equivalent to the application rate. By referencing the underlying population this statistic shows how the number of June deadline applicants is changing in relation to the available pool of potential 18 year old applicants and so gives the chance that somebody from the group will apply to a provider by the June 30 deadline.

This statistic is only reported for 18 year olds.

Offers

An offer is defined as a provider's decision in response to an application to offer a place to an applicant, often subject to the applicant satisfying academic and/or other criteria, via a June deadline application (i.e. does not cover choices made through the following routes: Clearing, Extra, Adjustment and RPAs).

Offer rate

The number of offers made divided by the number of June deadline applications. This gives the proportion of all June deadline applications to the provider that received an offer.

Percentage point difference between offer rate and average offer rate

The offer rate minus the average offer rate.

The percentage point difference can be compared to the expected range of statistical variation resulting from the calculation of the average offer rate using the Average Offer Rate Lookup Table. Where the value of the percentage point difference lies outside of this range, the percentage point difference may be considered to represent a real difference between the offer rate and the average offer rate.

Other definitions

Age

This analysis uses country-specific age definitions that align with the cut off points for school and college cohorts within the different administrations of the UK. For England and Wales, ages are defined on the 31 August, for Northern Ireland on the 1 July and for Scotland on the 28 February the following year. Defining ages in this way matches the assignment of children to school cohorts. For applicants outside of the UK a cohort cut off of 31 August has been used.

Provider

A higher education provider - a university or college.

UK domiciled

Declared area of permanent residence within England, Northern Ireland, Scotland and Wales. Applicants from the Channel Islands and Isle of Man are not included.