

A60 Anglia Ruskin University

Cycle years: 2010 - 2015

Cycle Reference Point: End of Cycle

Applicant coverage: UK domiciled

Reporting groups: Sex, POLAR3, ethnic group

Applicant statistics: June deadline applicants, placed June deadline applicants, all placed applicants, June deadline applicants per 10,000 population, placed June deadline applicants per 10,000 population, all placed applicants per 10,000 population

Application statistics: June deadline applications, offers, offer rate, average offer rate, percentage point difference between offer rate and average offer rate, contribution of group to the average offer rate

Non-disclosure controls: To avoid the disclosure of information about any individual the following measures are taken

- Applicants, placed applicants, applications and offers are rounded to the nearest 5.
- Applicants/placed applicants per 10,000 population figures are reported as 0 if the applicant/placed applicant figures are rounded to 0.
- All statistics related to the offer rate are not reported when the number of applications for a group is less than 10. The percentage point difference between the offer rate and the average offer rate is not reported when the number of applications for a group is less than 50.
- Offer rates are reported as 0% if there are fewer than 5 offers, and 100% if the number of offers is within 5 of the number of applications. When the offer rate is reported as 0% or 100%, it is reported in italics.

Contents:

18 year old applicants:	P.1
18 year old applications:	P.2
18 year old applicants by sex:	P.3
18 year old applications by sex:	P.4
18 year old applicants by POLAR3 quintile:	P.7
18 year old applications by POLAR3 quintile:	P.8
18 year old applicants by ethnic group:	P.11
18 year old applications by ethnic group:	P.12
Applicants (all ages):	P.15
Applications (all ages):	P.16
Applicants (all ages) by sex:	P.17
Applications (all ages) by sex:	P.18
Applicants (all ages) by POLAR3 quintile:	P.19
Applications (all ages) by POLAR3 quintile:	P.20
Applicants (all ages) by ethnic group:	P.21
Applications (all ages) by ethnic group:	P.22

P.1 18 year old applicants

Statistic	2010	2011	2012	2013	2014	2015
June deadline applicants	4,910	5,165	6,400	6,585	6,435	6,255
Placed June deadline applicants	990	1,155	1,225	1,095	1,115	920
All placed applicants	1,460	1,635	1,620	1,465	1,455	1,315
June deadline applicants per 10,000 population	62.2	67.1	82.7	86.6	85.4	81.6
Placed June deadline applicants per 10,000	12.5	15.0	15.9	14.4	14.8	12.0
All placed applicants per 10,000 population	18.5	21.3	20.9	19.3	19.3	17.2

P.2 18 year old applications

Statistic	2010	2011	2012	2013	2014	2015
June deadline applications	5,530	5,610	6,935	7,015	6,860	6,635
Offers	3,935	3,950	5,015	5,500	5,365	5,030
Offer rate	71.1%	70.4%	72.3%	78.4%	78.2%	75.8%

P.3 18 year old applicants by sex

Statistic	Sex	2010	2011	2012	2013	2014	2015
June deadline applicants	Men	1,800	1,905	2,180	2,400	2,355	2,220
	Women	3,110	3,265	4,220	4,190	4,075	4,035
Placed June deadline applicants	Men	415	515	465	410	425	330
	Women	570	645	760	680	690	595
All placed applicants	Men	645	705	635	560	570	510
	Women	815	935	985	905	885	805
June deadline applicants per 10,000 population	Men	44.8	48.4	54.9	61.4	60.9	56.5
	Women	80.2	86.6	112.0	113.0	111.4	108.0
Placed June deadline applicants per 10,000 population	Men	10.4	13.0	11.8	10.5	11.0	8.4
	Women	14.7	17.1	20.2	18.4	18.8	15.9
All placed applicants per 10,000 population	Men	16.1	17.9	16.0	14.4	14.8	12.9
	Women	21.0	24.8	26.1	24.4	24.1	21.6

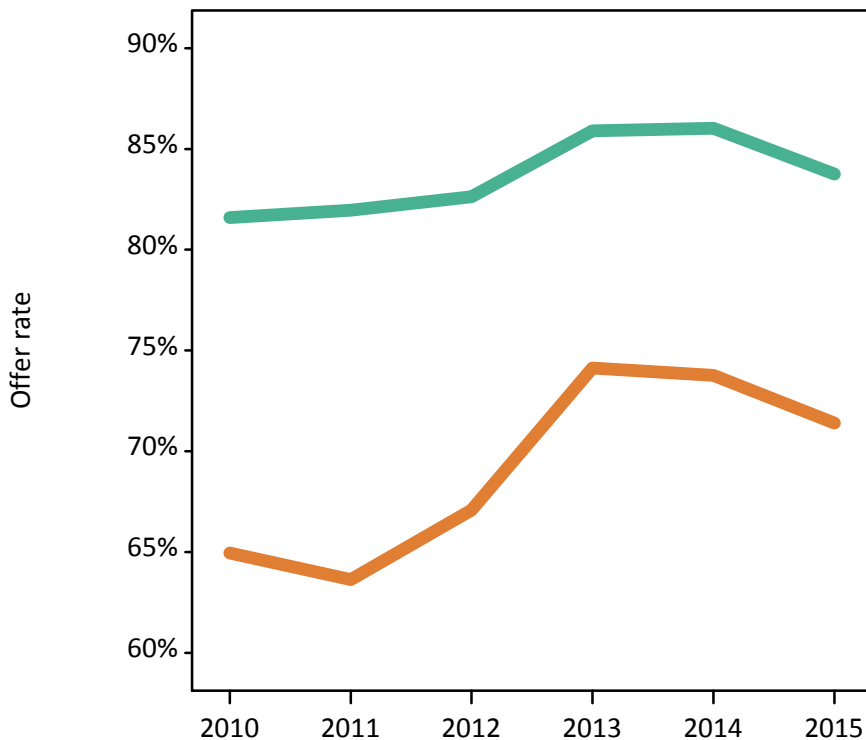
P.4 18 year old applications by sex

Statistic	Sex	2010	2011	2012	2013	2014	2015
June deadline applications	Men	2,050	2,065	2,345	2,540	2,485	2,340
	Women	3,485	3,545	4,590	4,475	4,375	4,300
Offers	Men	1,670	1,695	1,935	2,180	2,135	1,960
	Women	2,265	2,255	3,080	3,315	3,225	3,070
Offer rate	Men	81.6%	82.0%	82.6%	85.9%	86.0%	83.8%
	Women	65.0%	63.6%	67.1%	74.1%	73.8%	71.4%
Average offer rate	Men	82.1%	82.1%	83.1%	86.0%	86.1%	84.2%
	Women	64.6%	63.6%	66.8%	74.1%	73.7%	71.2%
Percentage point difference between offer rate and average offer rate	Men	-0.5	-0.1	-0.5	-0.1	-0.1	-0.4
	Women	0.3	0.1	0.2	0.0	0.0	0.2
Contribution of group to the average offer rate	Men	0.631	0.627	0.577	0.602	0.588	0.598
	Women	0.783	0.783	0.784	0.774	0.766	0.781

P.5 18 year old offer rate by sex

Note: The line for a group is not plotted when that group made fewer than 10 applications in any of the years from 2010-2015.

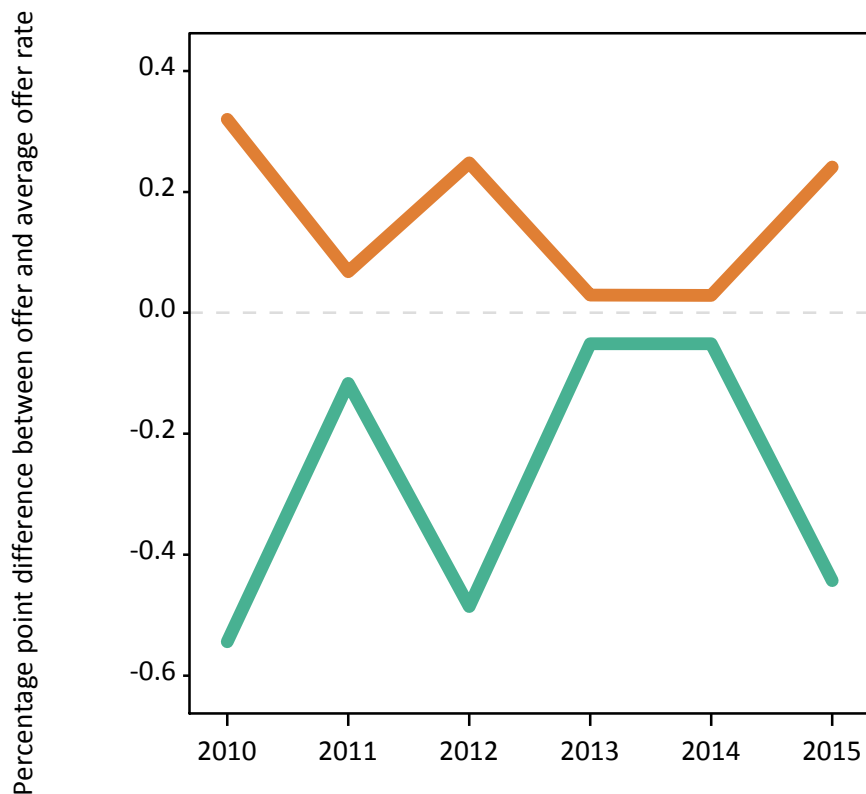
Men
Women



P.6 Percentage point difference between 18 year old offer rate and average offer rate by sex

Note: The line for a group is not plotted when that group made fewer than 50 applications in any of the years from 2010-2015.

Men
Women



P.7 18 year old applicants by POLAR3 quintile

Statistic	POLAR3 quintile	2010	2011	2012	2013	2014	2015
June deadline applicants	Quintile 1	780	695	880	830	920	915
	Quintile 2	1,000	1,090	1,290	1,275	1,180	1,135
	Quintile 3	1,055	1,130	1,430	1,555	1,475	1,410
	Quintile 4	1,195	1,210	1,485	1,495	1,535	1,485
	Quintile 5	880	1,030	1,295	1,415	1,310	1,295
Placed June deadline applicants	Quintile 1	170	170	190	160	160	125
	Quintile 2	180	255	235	230	225	185
	Quintile 3	215	260	270	225	250	225
	Quintile 4	265	275	325	250	255	220
	Quintile 5	160	195	200	230	220	155
All placed applicants	Quintile 1	225	215	225	200	200	170
	Quintile 2	260	340	310	300	285	245
	Quintile 3	325	360	350	305	335	320
	Quintile 4	380	385	440	350	335	305
	Quintile 5	270	335	285	310	300	260
June deadline applicants per 10,000 population	Quintile 1	52.6	48.3	61.6	59.7	66.2	65.3
	Quintile 2	64.9	72.4	86.0	86.6	80.6	76.3
	Quintile 3	66.3	73.6	92.6	102.0	98.0	91.9
	Quintile 4	75.2	77.3	93.6	95.5	99.7	94.9
	Quintile 5	51.9	62.2	77.1	85.6	80.3	77.3
Placed June deadline applicants per 10,000 population	Quintile 1	11.5	11.8	13.5	11.3	11.6	8.9
	Quintile 2	11.6	17.0	15.7	15.7	15.4	12.6
	Quintile 3	13.5	17.0	17.5	14.7	16.6	14.6
	Quintile 4	16.7	17.4	20.5	15.9	16.7	14.1
	Quintile 5	9.4	11.8	12.0	14.0	13.4	9.4
All placed applicants per 10,000 population	Quintile 1	15.1	14.8	15.9	14.5	14.4	12.0
	Quintile 2	16.8	22.7	20.7	20.4	19.3	16.6
	Quintile 3	20.5	23.3	22.7	19.9	22.4	21.0
	Quintile 4	23.9	24.5	27.7	22.4	21.7	19.4
	Quintile 5	16.0	20.3	17.1	18.7	18.4	15.6

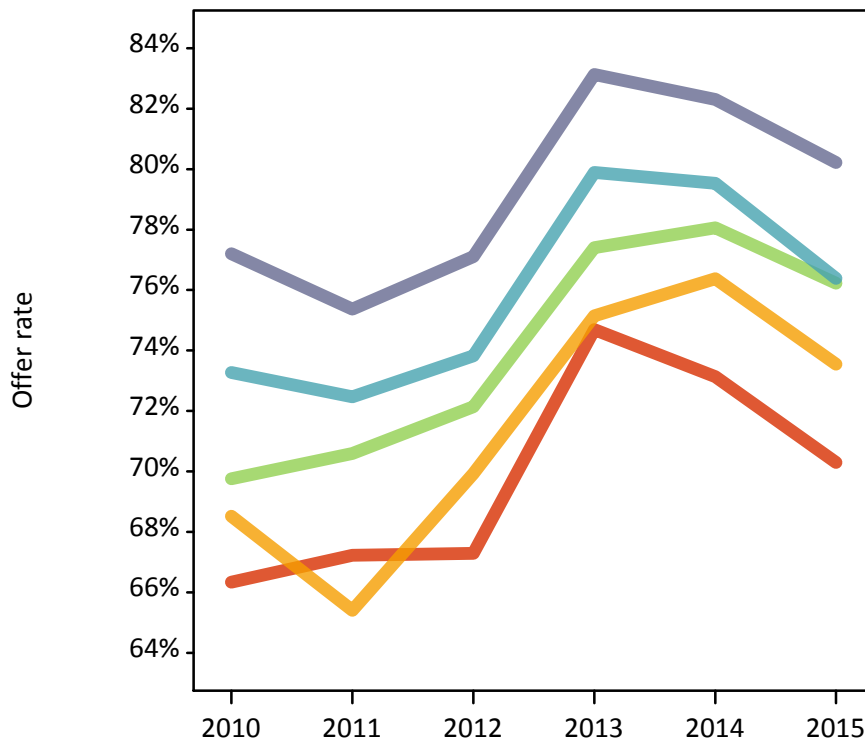
P.8 18 year old applications by POLAR3 quintile

Statistic	POLAR3 quintile	2010	2011	2012	2013	2014	2015
June deadline applications	Quintile 1	905	780	965	900	995	995
	Quintile 2	1,120	1,215	1,415	1,365	1,275	1,205
	Quintile 3	1,175	1,195	1,555	1,635	1,560	1,490
	Quintile 4	1,375	1,315	1,620	1,600	1,645	1,575
	Quintile 5	950	1,090	1,365	1,500	1,375	1,355
Offers	Quintile 1	600	525	650	675	725	700
	Quintile 2	765	795	990	1,025	975	885
	Quintile 3	820	845	1,120	1,265	1,215	1,135
	Quintile 4	1,010	955	1,195	1,280	1,310	1,205
	Quintile 5	735	825	1,055	1,245	1,130	1,085
Offer rate	Quintile 1	66.3%	67.2%	67.3%	74.7%	73.1%	70.3%
	Quintile 2	68.5%	65.4%	69.9%	75.1%	76.4%	73.5%
	Quintile 3	69.8%	70.6%	72.1%	77.4%	78.1%	76.2%
	Quintile 4	73.3%	72.5%	73.8%	79.9%	79.5%	76.4%
	Quintile 5	77.2%	75.4%	77.1%	83.1%	82.3%	80.2%
Average offer rate	Quintile 1	68.1%	67.7%	67.7%	75.3%	74.5%	72.2%
	Quintile 2	70.2%	66.5%	70.6%	76.2%	77.0%	74.2%
	Quintile 3	69.3%	70.3%	72.6%	77.7%	77.5%	76.4%
	Quintile 4	72.2%	71.2%	73.1%	79.5%	79.4%	75.5%
	Quintile 5	75.7%	75.6%	76.4%	81.9%	81.6%	79.1%
Percentage point difference between offer rate and average offer rate	Quintile 1	-1.8	-0.5	-0.4	-0.6	-1.3	-1.9
	Quintile 2	-1.7	-1.1	-0.7	-1.1	-0.6	-0.6
	Quintile 3	0.4	0.3	-0.5	-0.3	0.5	-0.1
	Quintile 4	1.1	1.3	0.7	0.4	0.2	0.9
	Quintile 5	1.6	-0.3	0.7	1.2	0.7	1.1
Contribution of group to the average offer rate	Quintile 1	0.275	0.251	0.246	0.219	0.241	0.237
	Quintile 2	0.314	0.315	0.283	0.271	0.268	0.265
	Quintile 3	0.326	0.316	0.305	0.308	0.308	0.303
	Quintile 4	0.354	0.335	0.322	0.302	0.308	0.308
	Quintile 5	0.332	0.322	0.301	0.304	0.312	0.318

P.9 18 year old offer rate by POLAR3 quintile

Note: The line for a group is not plotted when that group made fewer than 10 applications in any of the years from 2010-2015.

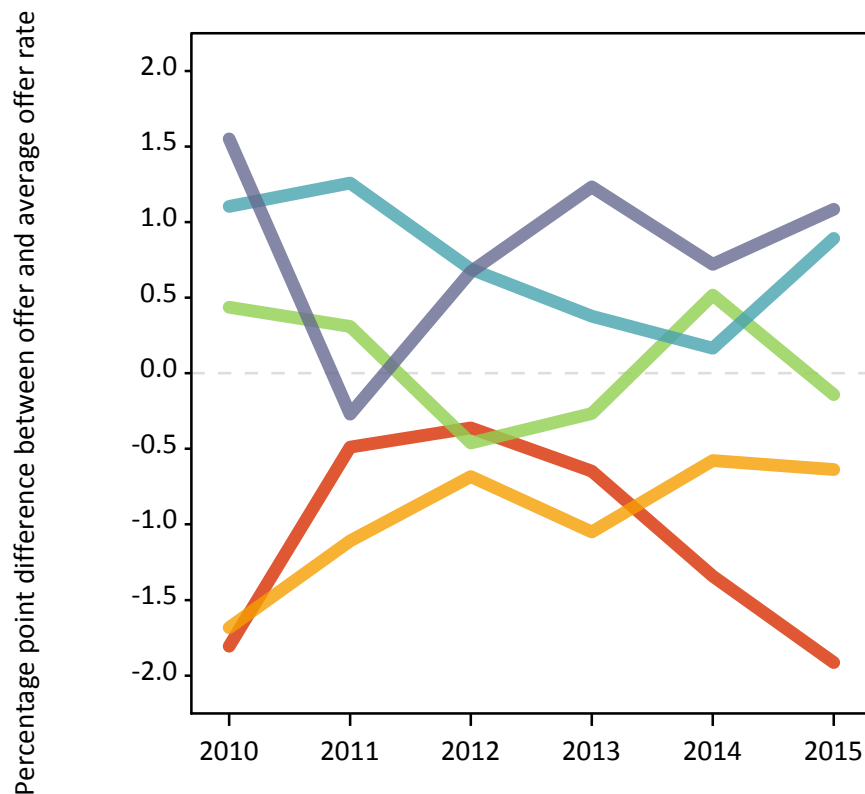
- Quintile 1
- Quintile 2
- Quintile 3
- Quintile 4
- Quintile 5



P.10 Percentage point difference between 18 year old offer rate and average offer rate by POLAR3 quintile

Note: The line for a group is not plotted when that group made fewer than 50 applications in any of the years from 2010-2015.

- Quintile 1
- Quintile 2
- Quintile 3
- Quintile 4
- Quintile 5



P.11 18 year old applicants by ethnic group

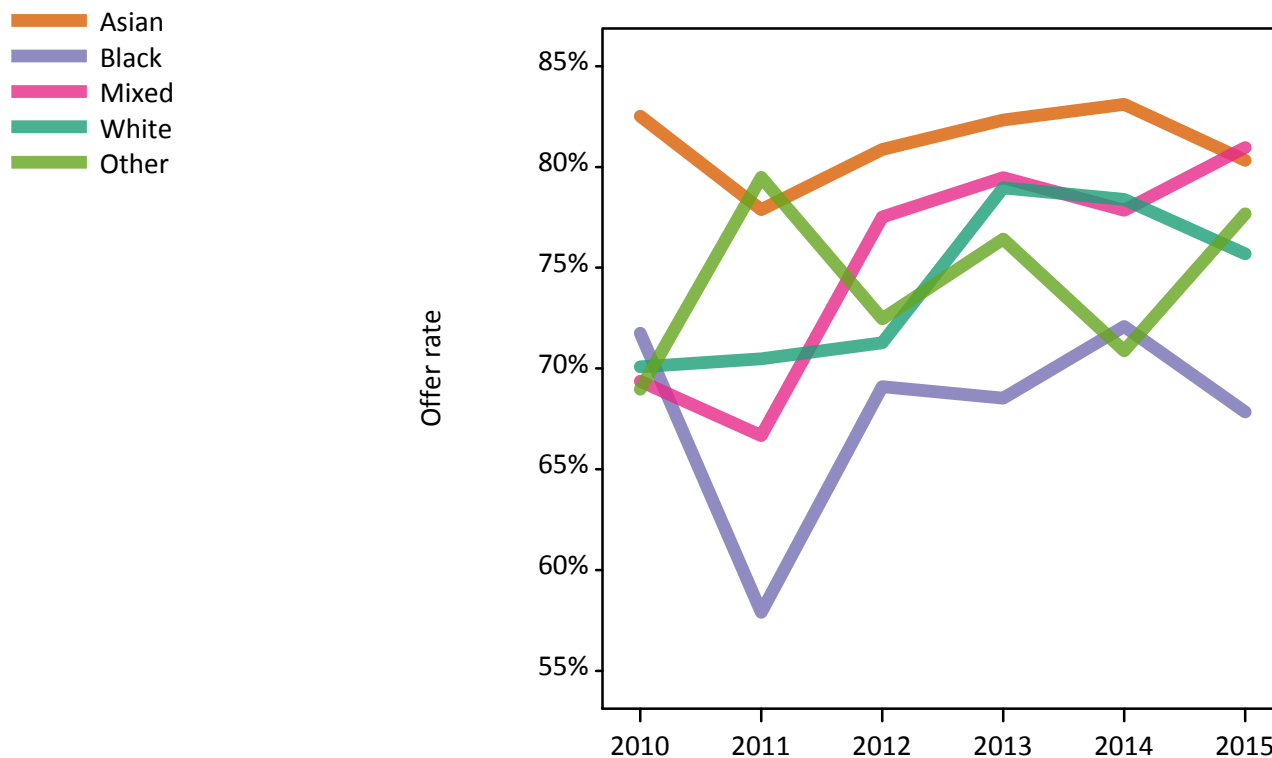
Statistic	Ethnic group	2010	2011	2012	2013	2014	2015
June deadline applicants	Asian	390	525	675	755	720	750
	Black	220	335	515	620	605	590
	Mixed	150	165	210	255	275	275
	White	4,095	4,080	4,915	4,825	4,715	4,510
	Other	30	40	60	105	100	100
Placed June deadline applicants	Asian	65	90	100	80	115	85
	Black	30	70	95	80	90	65
	Mixed	20	45	35	50	50	45
	White	860	945	975	865	840	705
	Other	0	5	15	10	15	15
All placed applicants	Asian	125	165	165	150	170	145
	Black	100	130	170	155	150	115
	Mixed	45	70	50	70	65	65
	White	1,170	1,255	1,190	1,060	1,045	950
	Other	5	15	25	20	20	25
June deadline applicants per 10,000 population	Asian	63.2	83.6	104.4	114.5	105.9	106.3
	Black	83.7	122.2	182.2	208.5	199.9	185.1
	Mixed	65.2	69.0	81.4	93.9	94.9	89.2
	White	61.1	63.0	76.1	76.7	76.4	72.4
	Other	36.4	46.9	68.9	113.6	108.5	103.8
Placed June deadline applicants per 10,000 population	Asian	10.8	14.0	15.8	12.4	17.1	12.3
	Black	12.2	25.6	34.4	26.6	29.0	20.7
	Mixed	9.5	18.6	14.2	19.2	17.4	13.9
	White	12.8	14.6	15.1	13.7	13.6	11.3
	Other	0.0	7.4	14.7	12.1	17.2	17.7
All placed applicants per 10,000 population	Asian	20.5	26.3	25.8	22.6	25.1	20.4
	Black	38.6	46.8	59.7	51.5	48.8	36.5
	Mixed	19.4	28.9	19.6	26.3	22.6	21.4
	White	17.5	19.4	18.4	16.9	17.0	15.2
	Other	6.5	17.3	30.5	21.0	20.4	27.0

P.12 18 year old applications by ethnic group

Statistic	Ethnic group	2010	2011	2012	2013	2014	2015
June deadline applications	Asian	410	545	710	785	760	780
	Black	225	340	520	630	615	595
	Mixed	175	175	220	265	290	290
	White	4,660	4,485	5,395	5,195	5,070	4,840
	Other	30	40	70	105	105	105
Offers	Asian	340	425	575	650	630	625
	Black	160	200	360	430	445	405
	Mixed	120	115	170	210	225	235
	White	3,265	3,160	3,845	4,100	3,975	3,665
	Other	20	30	50	80	75	80
Offer rate	Asian	82.5%	77.9%	80.9%	82.3%	83.1%	80.3%
	Black	71.7%	57.9%	69.1%	68.5%	72.1%	67.8%
	Mixed	69.4%	66.7%	77.5%	79.5%	77.9%	81.0%
	White	70.1%	70.5%	71.3%	79.0%	78.4%	75.7%
	Other	69.0%	79.5%	72.5%	76.4%	70.9%	77.7%
Average offer rate	Asian	81.8%	79.3%	81.5%	84.7%	82.5%	81.8%
	Black	74.5%	64.5%	74.6%	73.4%	76.7%	71.7%
	Mixed	71.0%	71.6%	79.1%	81.3%	79.3%	80.8%
	White	70.0%	69.6%	70.6%	77.9%	77.7%	74.9%
	Other	70.0%	76.9%	74.4%	78.3%	76.3%	80.2%
Percentage point difference between offer rate and average offer rate	Asian	0.8	-1.4	-0.6	-2.4	0.6	-1.5
	Black	-2.7	-6.6	-5.5	-4.8	-4.6	-3.9
	Mixed	-1.6	-4.9	-1.6	-1.9	-1.5	0.1
	White	0.1	0.9	0.7	1.1	0.7	0.8
	Other	N/A	N/A	-2.0	-1.9	-5.4	-2.6
Contribution of group to the average offer rate	Asian	0.391	0.357	0.337	0.333	0.377	0.379
	Black	0.187	0.192	0.213	0.192	0.216	0.211
	Mixed	0.172	0.139	0.152	0.147	0.146	0.150
	White	0.884	0.846	0.832	0.796	0.799	0.792
	Other	0.093	0.153	0.114	0.087	0.083	0.102

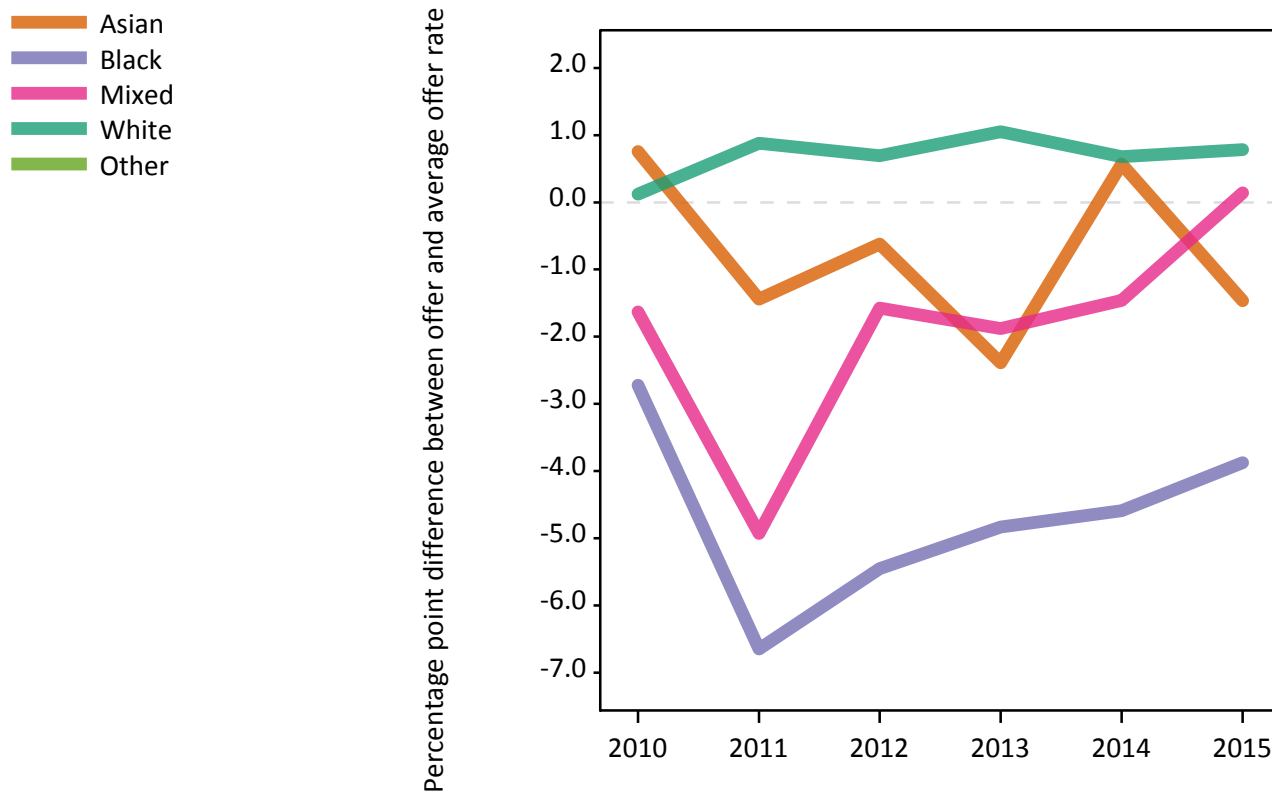
P.13 18 year old offer rate by ethnic group

Note: The line for a group is not plotted when that group made fewer than 10 applications in any of the years from 2010-2015.



P.14 Percentage point difference between 18 year old offer rate and average offer rate by ethnic group

Note: The line for a group is not plotted when that group made fewer than 50 applications in any of the years from 2010-2015.



P.15 Applicants (all ages)

Statistic	2010	2011	2012	2013	2014	2015
June deadline applicants	12,375	13,550	15,060	15,585	15,685	15,760
Placed June deadline applicants	2,390	2,950	3,020	2,775	2,985	2,690
All placed applicants	3,395	3,855	4,155	3,990	4,235	3,895

P.16 Applications (all ages)

Statistic	2010	2011	2012	2013	2014	2015
June deadline applications	14,365	15,420	16,860	17,155	17,220	17,265
Offers	7,370	8,140	9,475	10,245	10,130	10,010
Offer rate	51.3%	52.8%	56.2%	59.7%	58.8%	58.0%

P.17 Applicants (all ages) by sex

Statistic	Sex	2010	2011	2012	2013	2014	2015
June deadline applicants	Men	4,220	4,730	4,995	5,365	5,345	5,455
	Women	8,155	8,820	10,065	10,220	10,340	10,310
Placed June deadline applicants	Men	835	1,195	1,085	1,015	1,065	940
	Women	1,550	1,755	1,935	1,760	1,915	1,750
All placed applicants	Men	1,345	1,575	1,590	1,570	1,605	1,465
	Women	2,050	2,280	2,565	2,420	2,630	2,430

P.18 Applications (all ages) by sex

Statistic	Sex	2010	2011	2012	2013	2014	2015
June deadline applications	Men	4,880	5,255	5,520	5,825	5,810	5,920
	Women	9,485	10,165	11,340	11,330	11,410	11,350
Offers	Men	3,040	3,445	3,715	4,180	4,070	3,945
	Women	4,330	4,695	5,760	6,070	6,060	6,065
Offer rate	Men	62.3%	65.5%	67.3%	71.8%	70.0%	66.7%
	Women	45.7%	46.2%	50.8%	53.5%	53.1%	53.4%

P.19 Applicants (all ages) by POLAR3 quintile

Statistic	POLAR3 quintile	2010	2011	2012	2013	2014	2015
June deadline applicants	Quintile 1	2,100	2,195	2,365	2,370	2,495	2,585
	Quintile 2	2,580	2,830	3,070	3,195	3,140	3,140
	Quintile 3	2,635	2,950	3,360	3,580	3,540	3,535
	Quintile 4	2,885	3,035	3,415	3,465	3,580	3,475
	Quintile 5	2,145	2,495	2,810	2,945	2,890	2,965
Placed June deadline applicants	Quintile 1	420	485	480	425	480	415
	Quintile 2	455	605	595	565	650	565
	Quintile 3	495	645	665	575	610	590
	Quintile 4	610	670	735	650	685	625
	Quintile 5	400	535	540	555	560	470
All placed applicants	Quintile 1	540	590	625	590	645	575
	Quintile 2	640	760	805	775	860	780
	Quintile 3	720	835	905	860	935	885
	Quintile 4	840	875	1,035	935	980	885
	Quintile 5	650	780	770	825	805	735

P.20 Applications (all ages) by POLAR3 quintile

Statistic	POLAR3 quintile	2010	2011	2012	2013	2014	2015
June deadline applications	Quintile 1	2,510	2,585	2,710	2,695	2,795	2,940
	Quintile 2	3,040	3,265	3,475	3,565	3,500	3,445
	Quintile 3	2,995	3,325	3,740	3,865	3,835	3,820
	Quintile 4	3,350	3,420	3,840	3,805	3,915	3,785
	Quintile 5	2,430	2,775	3,055	3,190	3,130	3,205
Offers	Quintile 1	1,160	1,225	1,335	1,440	1,520	1,510
	Quintile 2	1,450	1,610	1,895	1,980	1,925	1,880
	Quintile 3	1,495	1,715	2,070	2,235	2,200	2,190
	Quintile 4	1,855	1,910	2,230	2,385	2,445	2,315
	Quintile 5	1,395	1,660	1,925	2,190	2,030	2,080
Offer rate	Quintile 1	46.2%	47.3%	49.3%	53.4%	54.3%	51.3%
	Quintile 2	47.7%	49.4%	54.6%	55.5%	55.0%	54.5%
	Quintile 3	50.0%	51.5%	55.3%	57.9%	57.3%	57.3%
	Quintile 4	55.4%	55.9%	58.1%	62.6%	62.4%	61.1%
	Quintile 5	57.3%	59.8%	63.0%	68.7%	64.8%	65.0%

P.21 Applicants (all ages) by ethnic group

Statistic	Ethnic group	2010	2011	2012	2013	2014	2015
June deadline applicants	Asian	945	1,195	1,475	1,600	1,640	1,775
	Black	1,675	2,190	2,590	2,785	2,960	3,095
	Mixed	380	425	525	610	620	615
	White	9,175	9,530	10,195	10,265	10,125	9,915
	Other	115	130	175	225	255	250
Placed June deadline applicants	Asian	140	205	240	210	250	230
	Black	165	255	355	285	415	330
	Mixed	75	90	100	120	125	105
	White	1,975	2,365	2,270	2,115	2,145	1,960
	Other	15	25	35	25	45	35
All placed applicants	Asian	260	350	405	375	400	390
	Black	355	415	645	610	715	585
	Mixed	115	125	145	170	190	155
	White	2,585	2,910	2,835	2,700	2,795	2,585
	Other	30	35	60	65	75	80

P.22 Applications (all ages) by ethnic group

Statistic	Ethnic group	2010	2011	2012	2013	2014	2015
June deadline applications	Asian	1,045	1,295	1,605	1,690	1,770	1,895
	Black	1,890	2,415	2,805	2,965	3,145	3,285
	Mixed	445	460	565	655	685	670
	White	10,745	11,010	11,570	11,490	11,250	11,030
	Other	140	145	195	235	275	260
Offers	Asian	650	815	1,045	1,170	1,150	1,210
	Black	495	585	950	995	1,140	1,025
	Mixed	235	245	340	415	425	440
	White	5,870	6,355	6,970	7,450	7,220	7,110
	Other	65	90	105	155	160	155
Offer rate	Asian	62.2%	62.7%	65.2%	69.0%	65.0%	63.9%
	Black	26.1%	24.2%	33.9%	33.5%	36.2%	31.2%
	Mixed	53.2%	53.5%	60.1%	63.3%	62.1%	65.8%
	White	54.6%	57.7%	60.2%	64.8%	64.2%	64.5%
	Other	46.0%	61.2%	53.9%	64.8%	57.9%	59.2%

Technical Notes and Definitions

UCAS undergraduate scheme

Adjustment

Adjustment allows applicants who have met and exceeded the terms of their conditional firm offer to seek and find a place at another provider whilst keeping their place at their original firm choice provider.

Clearing

Clearing is a route for applicants that are not placed and holding no offers to find a place on courses with vacancies.

Cycle year

The UCAS application cycle which runs from September to October the following year. For example the 2015 cycle runs from September 2014 through to October 2015.

End of cycle

The point in the cycle to which the numbers in this report refer, and the point at which the cycle is closed such that no more applications or offers can be made, and no more applicants can be placed. Numbers reported at the end of cycle exclude information on a small number of applicants who cancelled during the cycle.

Extra

Applicants who are unsuccessful in obtaining an offer or decline all offers may be eligible to apply through Extra, where they can apply to one further course at a time. Extra operates from 25 February until early July. It provides applicants who are eligible the possibility of obtaining an offer before exam results are published and Clearing starts.

June 30 deadline

The deadline for main scheme applications. Applicants who apply after this date will go directly into Clearing.

Record of Prior Acceptance (RPA)

RPA is an acceptance route used when a provider informs UCAS of applicants it has accepted outside of the normal application process (e.g. individuals who have applied directly to the provider).

Reporting groups

Ethnic group

High level grouping of ethnic origin as declared by the applicant: 'White', 'Black', 'Asian', 'Mixed', 'Other', 'Unknown'. Applicants who declare themselves as 'Unknown' ethnic origin are not reported in these tables, but are included in the associated csv data file.

POLAR3 quintile

Developed by HEFCE, POLAR3 classifies small areas across the UK into five groups according to their level of young participation in Higher Education. Each of these groups represents around 20 per cent of young people and is ranked from Quintile 1 (areas with the lowest young participation rates, considered as the most disadvantaged) to Quintile 5 (highest young participation rates, considered most advantaged). POLAR3 is based on the participation rates of young people between 2005 and 2009 who entered Higher Education between 2005-06 and 2010-11, therefore is most suitable for applicants aged 19 and under. These groups are assigned using the postcode declared by the applicant at the time of their application. If a UK postcode is invalid, considered unsafe for measurement or there is no link to Census geography possible then the applicant is not assigned to a quintile. Applicants with no POLAR3 quintile are not reported.

Sex

Sex as declared by the applicant.

SIMD quintile

Scottish index of multiple deprivation (SIMD) for 2012 identifies small area concentrations of multiple deprivation across all of Scotland, providing a relative measure of deprivation amongst 6505 small areas (data zones) based on 7 socio-economic domains. These small areas are classified into five groups ranked from Quintile 1 (considered the most deprived) to Quintile 5 (considered least deprived), with equal populations in each quintile. Quintiles are assigned using the postcode declared by the applicant, applicants declaring invalid postcodes are classified as 'Not assigned' and are not reported.

SIMD is only defined for applicants domiciled in Scotland, therefore any applicants domiciled outside of Scotland cannot be assigned to an SIMD quintile and so are not reported for this measure.

SIMD is only reported for providers in Scotland. Application and entry rates by SIMD are reported in the 2015 End of Cycle Report and the 2016 cycle January deadline application rate report.

Statistics reported in the tables

All placed applicants

The number of applicants placed for entry into higher education at the provider through one of their choices, including any choices made through Extra, or via Adjustment, Clearing or RPA.

All placed applicants per 10,000 population

The number of total UK domiciled 18 year old placed applicants for entry into higher education at the provider divided by the number of UK 18 year olds in the population, multiplied by 10,000. This gives the number of 18 year olds, for every 10,000 in the population, that were placed at the provider through one of their choices, including any choices made through Extra, or via Adjustment, Clearing or RPA. It is an alternative way of expressing the entry rate to a provider. By referencing the underlying population this statistic shows how the number of placed applicants is changing in relation to the available pool of potential applicants and so gives the chance that somebody from the group will be placed at a provider.

This statistic is only reported for 18 year olds.

Average offer rate

The offer rate that you might expect if the predicted grades and subject choice of applicants were the only factors that influenced whether an applicant was made an offer by the provider. The average offer rate is calculated by dividing applicants according to their specific combination of grades (for A levels the best three predicted grades are used, for BTECs, International Baccalaureate and Scottish Highers and Advanced Highers, predicted grades along with any grades already achieved upon applying are used) and subject choice. For each combination the number of main scheme offers is divided by the number of main scheme applications, to give an overall offer rate. This is then multiplied by the number of applications made by the group for which the average offer rate is being calculated (for example POLAR3 quintile 1), to give an average number of offers for that group. These average number of offers are then added together across all combinations of predicted grade and subject and divided by the number of main scheme applications from the group to give the average offer rate.

The average offer rate does not attempt to control for any other factors that may play a part in the decision to make an offer, such as the subject of the qualifications studied, their relevance to a course, or the grade in each subject; higher numbers of A levels being studied; the exact profile of grades predicted; personal statements; teacher references; interviews; or any other criteria (such as work experience or portfolios) that may be part of the admissions decision.

This statistic is only reported for 18 year olds.

Contribution of group to the average offer rate

The way in which the average offer rate is defined means that the pattern of application and offers of a group (for example POLAR3 quintile 1) will always contribute, in part, to the average offer rate for that group. When this contribution is large, the average offer rate will mainly reflect the patterns for the group, meaning that the value of the average offer rate will be similar to the offer rate, the percentage point difference statistic will be small, and any real difference between the offer rate and what might be expected given the predicted grades and subject choices of the applicants will be difficult to detect.

Values of the contribution of group to the average offer rate range between 0 and 1. The closer the value is to 1 the greater the contribution a group makes to its own average offer rate.

This statistic is only reported for 18 year olds.

Placed June deadline applicants

An applicant who has been placed for entry into higher education at the provider through a June deadline application.

Placed June deadline applicants per 10,000 population

The number of UK domiciled 18 year old placed June deadline applicants at the provider divided by the number of UK 18 year olds in the population, multiplied by 10,000. This gives the number of 18 year olds, for every 10,000 in the population, that were placed at the provider through one of their June deadline applications. It is an alternative way of expressing the entry rate to a provider, but for placed June deadline applicants only. By referencing the underlying population this statistic shows how the number of placed June deadline applicants is changing in relation to the available pool of potential 18 year old applicants and so gives the chance that somebody from the group will be placed at a provider through a June deadline application.

This statistic is only reported for 18 year olds.

June deadline applications

An application (or choice) to a course in higher education to the provider that is made by the June 30 deadline. Each applicant can make up to five choices this way. The number of June deadline applications does not include choices made through the following routes: Clearing, Extra, Adjustment and RPAs. Applications made to October deadline courses received after the October deadline are not included in these statistics.

June deadline applicants

The number of applicants that made at least one application to the provider by the June 30 deadline.

June deadline applicants per 10,000 population

The number of UK domiciled 18 year old June deadline applicants to the provider divided by the number of UK 18 year olds in the population, multiplied by 10,000. This gives the number of 18 year olds, for every 10,000 in the population, who applied by the June 30 deadline. It is equivalent to the application rate. By referencing the underlying population this statistic shows how the number of June deadline applicants is changing in relation to the available pool of potential 18 year old applicants and so gives the chance that somebody from the group will apply to a provider by the June 30 deadline.

This statistic is only reported for 18 year olds.

Offers

An offer is defined as a provider's decision in response to an application to offer a place to an applicant, often subject to the applicant satisfying academic and/or other criteria, via a June deadline application (i.e. does not cover choices made through the following routes: Clearing, Extra, Adjustment and RPAs).

Offer rate

The number of offers made divided by the number of June deadline applications. This gives the proportion of all June deadline applications to the provider that received an offer.

Percentage point difference between offer rate and average offer rate

The offer rate minus the average offer rate.

The percentage point difference can be compared to the expected range of statistical variation resulting from the calculation of the average offer rate using the Average Offer Rate Lookup Table. Where the value of the percentage point difference lies outside of this range, the percentage point difference may be considered to represent a real difference between the offer rate and the average offer rate.

Other definitions

Age

This analysis uses country-specific age definitions that align with the cut off points for school and college cohorts within the different administrations of the UK. For England and Wales, ages are defined on the 31 August, for Northern Ireland on the 1 July and for Scotland on the 28 February the following year. Defining ages in this way matches the assignment of children to school cohorts. For applicants outside of the UK a cohort cut off of 31 August has been used.

Provider

A higher education provider - a university or college.

UK domiciled

Declared area of permanent residence within England, Northern Ireland, Scotland and Wales. Applicants from the Channel Islands and Isle of Man are not included.