

A40 Aberystwyth University

Cycle years: 2010 - 2015

Cycle Reference Point: End of Cycle

Applicant coverage: UK domiciled

Reporting groups: Sex, POLAR3, ethnic group

Applicant statistics: June deadline applicants, placed June deadline applicants, all placed applicants, June deadline applicants per 10,000 population, placed June deadline applicants per 10,000 population, all placed applicants per 10,000 population

Application statistics: June deadline applications, offers, offer rate, average offer rate, percentage point difference between offer rate and average offer rate, contribution of group to the average offer rate

Non-disclosure controls: To avoid the disclosure of information about any individual the following measures are taken

- Applicants, placed applicants, applications and offers are rounded to the nearest 5.
- Applicants/placed applicants per 10,000 population figures are reported as 0 if the applicant/placed applicant figures are rounded to 0.
- All statistics related to the offer rate are not reported when the number of applications for a group is less than 10. The percentage point difference between the offer rate and the average offer rate is not reported when the number of applications for a group is less than 50.
- Offer rates are reported as 0% if there are fewer than 5 offers, and 100% if the number of offers is within 5 of the number of applications. When the offer rate is reported as 0% or 100%, it is reported in italics.

Contents:

18 year old applicants:	P.1
18 year old applications:	P.2
18 year old applicants by sex:	P.3
18 year old applications by sex:	P.4
18 year old applicants by POLAR3 quintile:	P.7
18 year old applications by POLAR3 quintile:	P.8
18 year old applicants by ethnic group:	P.11
18 year old applications by ethnic group:	P.12
Applicants (all ages):	P.15
Applications (all ages):	P.16
Applicants (all ages) by sex:	P.17
Applications (all ages) by sex:	P.18
Applicants (all ages) by POLAR3 quintile:	P.19
Applications (all ages) by POLAR3 quintile:	P.20
Applicants (all ages) by ethnic group:	P.21
Applications (all ages) by ethnic group:	P.22

P.1 18 year old applicants

Statistic	2010	2011	2012	2013	2014	2015
June deadline applicants	5,830	6,745	6,115	5,115	4,260	4,100
Placed June deadline applicants	1,590	1,785	1,420	1,185	1,100	985
All placed applicants	1,615	1,830	1,580	1,345	1,300	1,140
June deadline applicants per 10,000 population	73.8	87.6	79.0	67.2	56.6	53.5
Placed June deadline applicants per 10,000	20.1	23.2	18.4	15.5	14.6	12.9
All placed applicants per 10,000 population	20.4	23.7	20.4	17.7	17.3	14.9

P.2 18 year old applications

Statistic	2010	2011	2012	2013	2014	2015
June deadline applications	6,360	7,370	6,625	5,535	4,690	4,475
Offers	6,235	7,215	6,420	5,400	4,580	4,390
Offer rate	98.0%	97.9%	96.9%	97.6%	97.7%	98.1%

P.3 18 year old applicants by sex

Statistic	Sex	2010	2011	2012	2013	2014	2015
June deadline applicants	Men	2,770	3,300	3,025	2,485	2,055	1,895
	Women	3,060	3,445	3,085	2,630	2,205	2,205
Placed June deadline applicants	Men	775	910	770	635	585	490
	Women	815	880	650	550	515	495
All placed applicants	Men	790	925	875	715	690	570
	Women	825	905	705	630	610	575
June deadline applicants per 10,000 population	Men	69.0	83.9	76.3	63.6	53.1	48.3
	Women	78.8	91.5	81.9	70.9	60.2	59.1
Placed June deadline applicants per 10,000 population	Men	19.3	23.1	19.4	16.3	15.1	12.5
	Women	21.0	23.3	17.3	14.8	14.0	13.2
All placed applicants per 10,000 population	Men	19.7	23.5	22.1	18.3	17.9	14.5
	Women	21.2	24.0	18.7	17.0	16.7	15.3

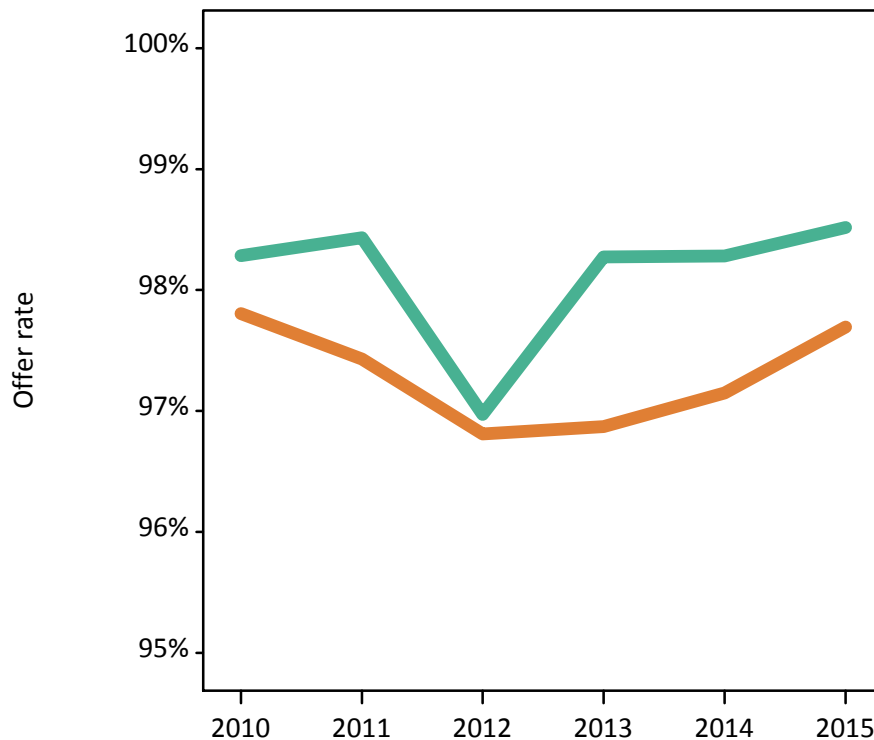
P.4 18 year old applications by sex

Statistic	Sex	2010	2011	2012	2013	2014	2015
June deadline applications	Men	3,030	3,635	3,300	2,720	2,270	2,090
	Women	3,330	3,735	3,325	2,810	2,420	2,385
Offers	Men	2,980	3,580	3,200	2,675	2,230	2,060
	Women	3,255	3,635	3,220	2,725	2,350	2,330
Offer rate	Men	98.3%	98.4%	97.0%	98.3%	98.3%	98.5%
	Women	97.8%	97.4%	96.8%	96.9%	97.1%	97.7%
Average offer rate	Men	98.3%	98.2%	97.1%	97.9%	97.9%	98.5%
	Women	97.8%	97.6%	96.7%	97.2%	97.5%	97.7%
Percentage point difference between offer rate and average offer rate	Men	-0.1	0.2	-0.1	0.4	0.4	0.0
	Women	0.0	-0.2	0.1	-0.3	-0.3	-0.0
Contribution of group to the average offer rate	Men	0.627	0.641	0.635	0.654	0.649	0.654
	Women	0.661	0.650	0.637	0.665	0.672	0.696

P.5 18 year old offer rate by sex

Note: The line for a group is not plotted when that group made fewer than 10 applications in any of the years from 2010-2015.

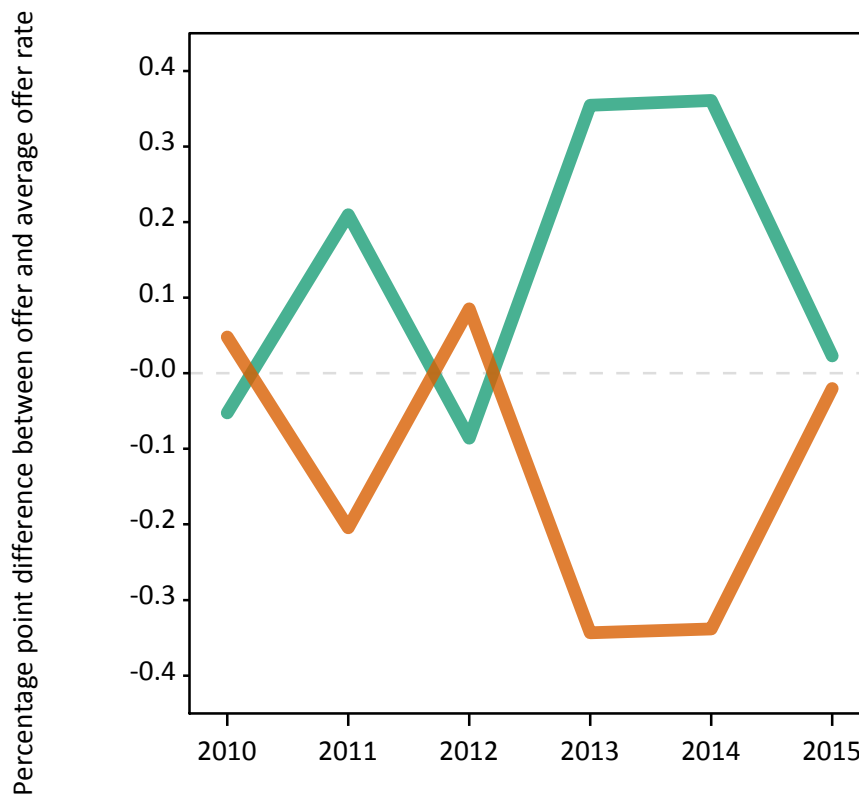
Men
Women



P.6 Percentage point difference between 18 year old offer rate and average offer rate by sex

Note: The line for a group is not plotted when that group made fewer than 50 applications in any of the years from 2010-2015.

Men
Women



P.7 18 year old applicants by POLAR3 quintile

Statistic	POLAR3 quintile	2010	2011	2012	2013	2014	2015
June deadline applicants	Quintile 1	670	800	670	595	570	545
	Quintile 2	960	1,130	1,100	900	775	825
	Quintile 3	1,140	1,300	1,240	1,000	920	785
	Quintile 4	1,415	1,645	1,460	1,300	1,010	975
	Quintile 5	1,625	1,855	1,640	1,310	975	965
Placed June deadline applicants	Quintile 1	190	195	145	135	145	120
	Quintile 2	250	290	240	200	195	235
	Quintile 3	315	355	285	235	255	175
	Quintile 4	400	425	375	320	270	235
	Quintile 5	435	515	380	295	230	220
All placed applicants	Quintile 1	190	200	160	150	160	135
	Quintile 2	250	295	260	215	225	255
	Quintile 3	320	360	315	265	300	215
	Quintile 4	400	445	420	370	315	275
	Quintile 5	445	520	425	335	295	260
June deadline applicants per 10,000 population	Quintile 1	45.3	55.6	47.2	42.8	41.1	39.0
	Quintile 2	62.4	75.1	73.4	60.9	53.0	55.5
	Quintile 3	71.8	84.4	80.2	65.6	61.0	51.1
	Quintile 4	89.0	105.0	91.9	83.2	65.6	62.3
	Quintile 5	96.0	112.2	97.5	79.2	59.9	57.5
Placed June deadline applicants per 10,000 population	Quintile 1	12.8	13.7	10.1	9.6	10.3	8.5
	Quintile 2	16.2	19.2	16.0	13.4	13.3	15.8
	Quintile 3	19.8	23.0	18.4	15.3	16.9	11.3
	Quintile 4	25.0	27.1	23.5	20.4	17.5	15.1
	Quintile 5	25.7	31.2	22.7	17.7	14.2	13.1
All placed applicants per 10,000 population	Quintile 1	12.8	13.9	11.1	10.7	11.5	9.7
	Quintile 2	16.3	19.7	17.5	14.7	15.2	17.2
	Quintile 3	20.2	23.3	20.3	17.5	20.0	14.0
	Quintile 4	25.2	28.3	26.5	23.6	20.6	17.6
	Quintile 5	26.4	31.5	25.4	20.3	18.1	15.5

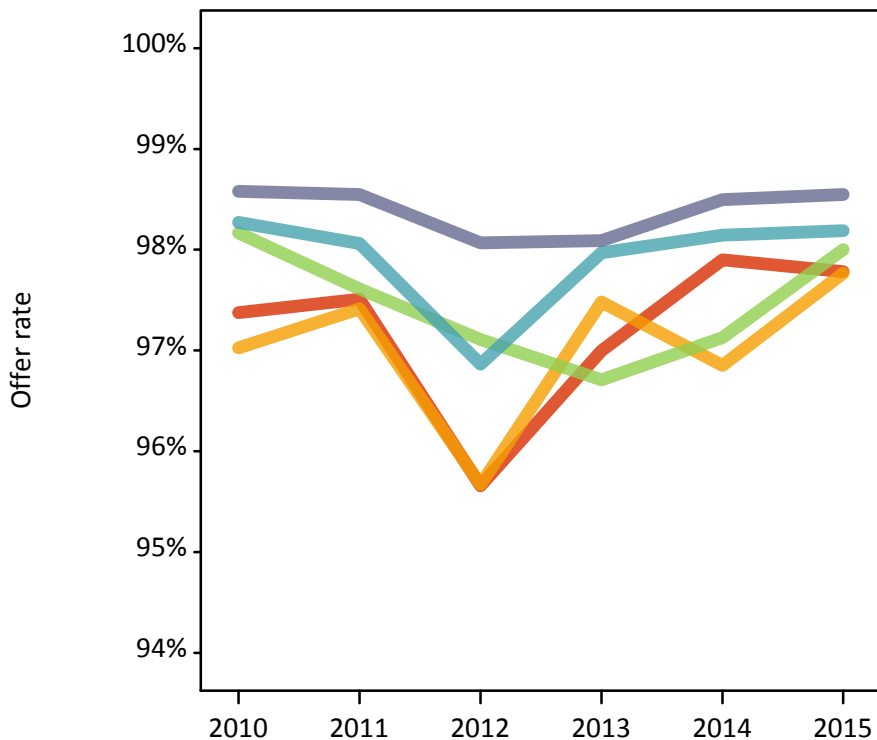
P.8 18 year old applications by POLAR3 quintile

Statistic	POLAR3 quintile	2010	2011	2012	2013	2014	2015
June deadline applications	Quintile 1	725	885	715	635	620	585
	Quintile 2	1,045	1,235	1,200	955	860	895
	Quintile 3	1,255	1,425	1,350	1,095	1,010	850
	Quintile 4	1,565	1,805	1,595	1,430	1,130	1,105
	Quintile 5	1,760	2,000	1,760	1,415	1,065	1,030
Offers	Quintile 1	705	860	685	615	605	575
	Quintile 2	1,010	1,205	1,150	930	830	875
	Quintile 3	1,230	1,390	1,310	1,060	980	835
	Quintile 4	1,535	1,770	1,545	1,400	1,110	1,085
	Quintile 5	1,735	1,970	1,725	1,390	1,050	1,015
Offer rate	Quintile 1	97.4%	97.5%	95.7%	97.0%	97.9%	97.8%
	Quintile 2	97.0%	97.4%	95.7%	97.5%	96.9%	97.8%
	Quintile 3	98.2%	97.6%	97.1%	96.7%	97.1%	98.0%
	Quintile 4	98.3%	98.1%	96.9%	98.0%	98.1%	98.2%
	Quintile 5	98.6%	98.5%	98.1%	98.1%	98.5%	98.5%
Average offer rate	Quintile 1	97.4%	97.2%	95.4%	96.9%	97.6%	98.0%
	Quintile 2	97.4%	97.4%	96.3%	97.2%	97.7%	97.9%
	Quintile 3	98.3%	98.1%	96.9%	97.1%	97.7%	98.1%
	Quintile 4	98.2%	98.1%	97.1%	98.0%	97.7%	98.0%
	Quintile 5	98.3%	98.3%	97.7%	98.0%	97.9%	98.4%
Percentage point difference between offer rate and average offer rate	Quintile 1	-0.0	0.3	0.3	0.1	0.3	-0.2
	Quintile 2	-0.4	0.0	-0.6	0.3	-0.8	-0.1
	Quintile 3	-0.1	-0.5	0.2	-0.4	-0.5	-0.1
	Quintile 4	0.1	-0.0	-0.3	-0.1	0.4	0.2
	Quintile 5	0.2	0.2	0.4	0.1	0.6	0.1
Contribution of group to the average offer rate	Quintile 1	0.243	0.244	0.245	0.273	0.283	0.288
	Quintile 2	0.283	0.276	0.286	0.281	0.311	0.334
	Quintile 3	0.308	0.294	0.303	0.313	0.340	0.342
	Quintile 4	0.348	0.348	0.336	0.361	0.385	0.374
	Quintile 5	0.382	0.370	0.361	0.367	0.352	0.377

P.9 18 year old offer rate by POLAR3 quintile

Note: The line for a group is not plotted when that group made fewer than 10 applications in any of the years from 2010-2015.

- Quintile 1
- Quintile 2
- Quintile 3
- Quintile 4
- Quintile 5



P.10 Percentage point difference between 18 year old offer rate and average offer rate by POLAR3 quintile

Note: The line for a group is not plotted when that group made fewer than 50 applications in any of the years from 2010-2015.

- Quintile 1
- Quintile 2
- Quintile 3
- Quintile 4
- Quintile 5



P.11 18 year old applicants by ethnic group

Statistic	Ethnic group	2010	2011	2012	2013	2014	2015
June deadline applicants	Asian	75	105	100	85	75	80
	Black	30	40	60	35	35	35
	Mixed	90	135	110	90	95	85
	White	5,605	6,415	5,805	4,870	4,030	3,875
	Other	10	10	15	15	10	10
Placed June deadline applicants	Asian	10	15	10	10	15	10
	Black	5	10	10	5	5	5
	Mixed	25	35	20	15	30	20
	White	1,540	1,710	1,370	1,140	1,045	940
	Other	0	0	0	5	0	5
All placed applicants	Asian	10	15	15	20	25	20
	Black	5	10	10	10	15	10
	Mixed	25	35	25	25	30	25
	White	1,560	1,750	1,505	1,275	1,220	1,075
	Other	0	0	5	5	5	5
June deadline applicants per 10,000 population	Asian	11.8	16.7	15.6	13.2	11.4	11.2
	Black	11.1	15.0	20.6	11.8	11.2	11.6
	Mixed	39.7	56.2	42.2	32.5	33.7	27.2
	White	83.5	99.1	89.9	77.4	65.3	62.2
	Other	10.4	12.3	19.2	16.5	8.6	10.4
Placed June deadline applicants per 10,000 population	Asian	1.9	2.5	1.9	1.8	2.2	1.6
	Black	2.3	4.4	2.8	1.3	2.0	1.6
	Mixed	11.7	14.9	8.1	6.3	9.7	7.1
	White	22.9	26.4	21.2	18.1	16.9	15.1
	Other	0.0	0.0	0.0	3.3	0.0	4.2
All placed applicants per 10,000 population	Asian	1.9	2.5	2.5	3.2	3.8	2.8
	Black	2.3	4.4	4.3	3.7	4.6	3.1
	Mixed	11.7	14.9	9.6	8.5	11.1	8.4
	White	23.3	27.1	23.3	20.3	19.8	17.2
	Other	0.0	0.0	3.4	3.3	3.2	4.2

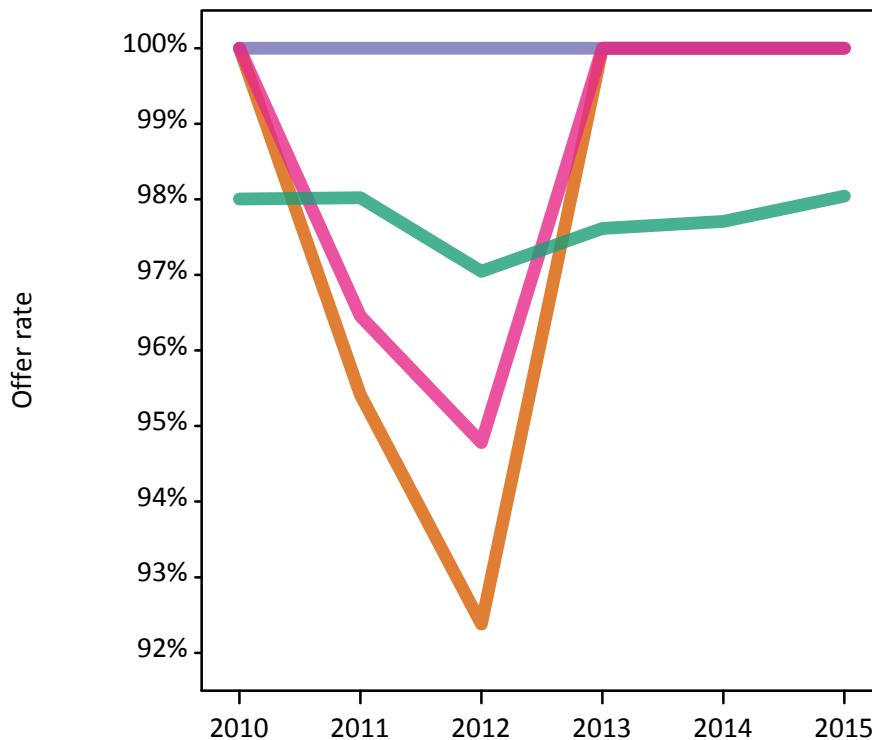
P.12 18 year old applications by ethnic group

Statistic	Ethnic group	2010	2011	2012	2013	2014	2015
June deadline applications	Asian	80	110	105	90	80	80
	Black	30	40	60	35	35	35
	Mixed	95	140	115	90	100	90
	White	6,120	7,025	6,300	5,285	4,450	4,240
	Other	10	10	15	15	10	10
Offers	Asian	80	105	95	90	80	80
	Black	30	40	60	35	35	35
	Mixed	95	135	110	85	95	90
	White	5,995	6,885	6,115	5,160	4,350	4,160
	Other	10	10	15	15	10	10
Offer rate	Asian	100.0%	95.4%	92.4%	100.0%	100.0%	100.0%
	Black	100.0%	100.0%	100.0%	100.0%	100.0%	100.0%
	Mixed	100.0%	96.5%	94.8%	100.0%	100.0%	100.0%
	White	98.0%	98.0%	97.0%	97.6%	97.7%	98.0%
	Other	N/A	100.0%	100.0%	100.0%	N/A	100.0%
Average offer rate	Asian	99.4%	97.8%	94.9%	98.4%	95.2%	97.9%
	Black	97.3%	97.5%	95.7%	96.0%	98.2%	97.6%
	Mixed	96.6%	98.3%	96.3%	97.2%	97.1%	98.7%
	White	98.0%	97.9%	96.9%	97.6%	97.7%	98.1%
	Other	N/A	88.3%	97.9%	98.8%	N/A	99.8%
Percentage point difference between offer rate and average offer rate	Asian	0.6	-2.3	-2.6	1.6	4.8	2.1
	Black	N/A	N/A	4.3	N/A	N/A	N/A
	Mixed	3.4	-1.9	-1.5	2.8	2.9	1.3
	White	-0.0	0.1	0.1	0.1	-0.0	-0.0
	Other	N/A	N/A	N/A	N/A	N/A	N/A
Contribution of group to the average offer rate	Asian	0.163	0.184	0.185	0.227	0.239	0.222
	Black	0.207	0.148	0.222	0.128	0.186	0.184
	Mixed	0.165	0.151	0.150	0.172	0.169	0.185
	White	0.969	0.961	0.959	0.964	0.960	0.958
	Other	N/A	0.200	0.057	0.179	N/A	0.262

P.13 18 year old offer rate by ethnic group

Note: The line for a group is not plotted when that group made fewer than 10 applications in any of the years from 2010-2015.

- Asian
- Black
- Mixed
- White
- Other



P.14 Percentage point difference between 18 year old offer rate and average offer rate by ethnic group

Note: The line for a group is not plotted when that group made fewer than 50 applications in any of the years from 2010-2015.

- Asian
- Black
- Mixed
- White
- Other



P.15 Applicants (all ages)

Statistic	2010	2011	2012	2013	2014	2015
June deadline applicants	8,065	9,555	8,300	7,380	6,145	5,955
Placed June deadline applicants	2,320	2,670	1,965	1,815	1,605	1,535
All placed applicants	2,365	2,745	2,250	2,100	1,940	1,855

P.16 Applications (all ages)

Statistic	2010	2011	2012	2013	2014	2015
June deadline applications	8,885	10,520	9,050	8,020	6,730	6,510
Offers	8,445	9,980	8,470	7,595	6,430	6,225
Offer rate	95.0%	94.9%	93.6%	94.7%	95.5%	95.6%

P.17 Applicants (all ages) by sex

Statistic	Sex	2010	2011	2012	2013	2014	2015
June deadline applicants	Men	4,020	4,950	4,280	3,825	3,110	2,890
	Women	4,050	4,610	4,020	3,555	3,035	3,065
Placed June deadline applicants	Men	1,205	1,440	1,110	1,035	890	805
	Women	1,115	1,230	855	780	715	725
All placed applicants	Men	1,230	1,475	1,295	1,200	1,085	985
	Women	1,135	1,270	955	905	850	870

P.18 Applications (all ages) by sex

Statistic	Sex	2010	2011	2012	2013	2014	2015
June deadline applications	Men	4,470	5,505	4,695	4,200	3,425	3,195
	Women	4,415	5,015	4,355	3,815	3,305	3,310
Offers	Men	4,240	5,210	4,395	3,985	3,285	3,055
	Women	4,205	4,770	4,075	3,610	3,145	3,165
Offer rate	Men	94.9%	94.7%	93.6%	94.8%	95.9%	95.6%
	Women	95.2%	95.2%	93.6%	94.6%	95.2%	95.6%

P.19 Applicants (all ages) by POLAR3 quintile

Statistic	POLAR3 quintile	2010	2011	2012	2013	2014	2015
June deadline applicants	Quintile 1	995	1,200	1,015	930	890	900
	Quintile 2	1,385	1,645	1,515	1,305	1,125	1,160
	Quintile 3	1,600	1,875	1,685	1,430	1,285	1,125
	Quintile 4	1,905	2,270	1,925	1,855	1,450	1,395
	Quintile 5	2,155	2,540	2,145	1,845	1,390	1,365
Placed June deadline applicants	Quintile 1	280	315	230	230	235	220
	Quintile 2	390	455	345	310	280	335
	Quintile 3	480	515	385	350	365	280
	Quintile 4	540	630	495	490	385	365
	Quintile 5	630	740	505	425	335	335
All placed applicants	Quintile 1	280	325	265	255	260	255
	Quintile 2	395	465	375	350	325	385
	Quintile 3	485	530	445	410	445	355
	Quintile 4	550	660	575	580	465	455
	Quintile 5	645	755	585	495	435	410

P.20 Applications (all ages) by POLAR3 quintile

Statistic	POLAR3 quintile	2010	2011	2012	2013	2014	2015
June deadline applications	Quintile 1	1,085	1,340	1,095	1,000	965	975
	Quintile 2	1,540	1,795	1,655	1,395	1,235	1,265
	Quintile 3	1,775	2,075	1,860	1,570	1,415	1,235
	Quintile 4	2,115	2,515	2,120	2,045	1,610	1,560
	Quintile 5	2,350	2,755	2,300	1,995	1,500	1,465
Offers	Quintile 1	1,010	1,245	995	925	920	920
	Quintile 2	1,445	1,700	1,545	1,330	1,160	1,205
	Quintile 3	1,680	1,965	1,730	1,470	1,345	1,185
	Quintile 4	2,015	2,385	1,990	1,955	1,555	1,495
	Quintile 5	2,270	2,655	2,200	1,905	1,450	1,405
Offer rate	Quintile 1	92.8%	92.9%	90.7%	92.5%	95.2%	94.7%
	Quintile 2	93.9%	94.8%	93.2%	95.4%	94.1%	95.3%
	Quintile 3	94.8%	94.6%	93.0%	93.5%	95.0%	96.1%
	Quintile 4	95.4%	94.7%	94.0%	95.6%	96.3%	95.9%
	Quintile 5	96.6%	96.4%	95.6%	95.5%	96.7%	96.0%

P.21 Applicants (all ages) by ethnic group

Statistic	Ethnic group	2010	2011	2012	2013	2014	2015
June deadline applicants	Asian	125	180	170	150	135	115
	Black	80	120	110	95	85	80
	Mixed	140	195	185	140	150	150
	White	7,650	8,975	7,780	6,925	5,730	5,560
	Other	25	25	25	30	15	20
Placed June deadline applicants	Asian	20	35	25	30	25	25
	Black	20	35	15	20	20	20
	Mixed	45	55	40	30	40	40
	White	2,220	2,525	1,870	1,720	1,505	1,435
	Other	5	5	5	5	0	10
All placed applicants	Asian	20	35	30	45	45	40
	Black	20	35	25	35	30	30
	Mixed	45	55	50	40	45	50
	White	2,265	2,595	2,075	1,945	1,785	1,690
	Other	5	5	5	5	5	10

P.22 Applications (all ages) by ethnic group

Statistic	Ethnic group	2010	2011	2012	2013	2014	2015
June deadline applications	Asian	130	190	185	155	140	115
	Black	85	125	110	100	85	80
	Mixed	155	205	190	150	155	160
	White	8,440	9,900	8,495	7,540	6,305	6,100
	Other	25	25	25	30	15	20
Offers	Asian	125	175	165	145	130	110
	Black	70	110	95	80	75	75
	Mixed	140	195	175	135	145	155
	White	8,040	9,415	7,975	7,170	6,030	5,835
	Other	20	20	25	25	15	20
Offer rate	Asian	96.2%	91.6%	89.1%	94.8%	95.0%	94.9%
	Black	78.2%	85.8%	85.7%	79.6%	88.5%	91.5%
	Mixed	92.8%	95.1%	91.1%	90.5%	94.8%	100.0%
	White	95.3%	95.1%	93.9%	95.1%	95.7%	95.7%
	Other	80.0%	100.0%	100.0%	100.0%	100.0%	100.0%

Technical Notes and Definitions

UCAS undergraduate scheme

Adjustment

Adjustment allows applicants who have met and exceeded the terms of their conditional firm offer to seek and find a place at another provider whilst keeping their place at their original firm choice provider.

Clearing

Clearing is a route for applicants that are not placed and holding no offers to find a place on courses with vacancies.

Cycle year

The UCAS application cycle which runs from September to October the following year. For example the 2015 cycle runs from September 2014 through to October 2015.

End of cycle

The point in the cycle to which the numbers in this report refer, and the point at which the cycle is closed such that no more applications or offers can be made, and no more applicants can be placed. Numbers reported at the end of cycle exclude information on a small number of applicants who cancelled during the cycle.

Extra

Applicants who are unsuccessful in obtaining an offer or decline all offers may be eligible to apply through Extra, where they can apply to one further course at a time. Extra operates from 25 February until early July. It provides applicants who are eligible the possibility of obtaining an offer before exam results are published and Clearing starts.

June 30 deadline

The deadline for main scheme applications. Applicants who apply after this date will go directly into Clearing.

Record of Prior Acceptance (RPA)

RPA is an acceptance route used when a provider informs UCAS of applicants it has accepted outside of the normal application process (e.g. individuals who have applied directly to the provider).

Reporting groups

Ethnic group

High level grouping of ethnic origin as declared by the applicant: 'White', 'Black', 'Asian', 'Mixed', 'Other', 'Unknown'. Applicants who declare themselves as 'Unknown' ethnic origin are not reported in these tables, but are included in the associated csv data file.

POLAR3 quintile

Developed by HEFCE, POLAR3 classifies small areas across the UK into five groups according to their level of young participation in Higher Education. Each of these groups represents around 20 per cent of young people and is ranked from Quintile 1 (areas with the lowest young participation rates, considered as the most disadvantaged) to Quintile 5 (highest young participation rates, considered most advantaged). POLAR3 is based on the participation rates of young people between 2005 and 2009 who entered Higher Education between 2005-06 and 2010-11, therefore is most suitable for applicants aged 19 and under. These groups are assigned using the postcode declared by the applicant at the time of their application. If a UK postcode is invalid, considered unsafe for measurement or there is no link to Census geography possible then the applicant is not assigned to a quintile. Applicants with no POLAR3 quintile are not reported.

Sex

Sex as declared by the applicant.

SIMD quintile

Scottish index of multiple deprivation (SIMD) for 2012 identifies small area concentrations of multiple deprivation across all of Scotland, providing a relative measure of deprivation amongst 6505 small areas (data zones) based on 7 socio-economic domains. These small areas are classified into five groups ranked from Quintile 1 (considered the most deprived) to Quintile 5 (considered least deprived), with equal populations in each quintile. Quintiles are assigned using the postcode declared by the applicant, applicants declaring invalid postcodes are classified as 'Not assigned' and are not reported.

SIMD is only defined for applicants domiciled in Scotland, therefore any applicants domiciled outside of Scotland cannot be assigned to an SIMD quintile and so are not reported for this measure.

SIMD is only reported for providers in Scotland. Application and entry rates by SIMD are reported in the 2015 End of Cycle Report and the 2016 cycle January deadline application rate report.

Statistics reported in the tables

All placed applicants

The number of applicants placed for entry into higher education at the provider through one of their choices, including any choices made through Extra, or via Adjustment, Clearing or RPA.

All placed applicants per 10,000 population

The number of total UK domiciled 18 year old placed applicants for entry into higher education at the provider divided by the number of UK 18 year olds in the population, multiplied by 10,000. This gives the number of 18 year olds, for every 10,000 in the population, that were placed at the provider through one of their choices, including any choices made through Extra, or via Adjustment, Clearing or RPA. It is an alternative way of expressing the entry rate to a provider. By referencing the underlying population this statistic shows how the number of placed applicants is changing in relation to the available pool of potential applicants and so gives the chance that somebody from the group will be placed at a provider.

This statistic is only reported for 18 year olds.

Average offer rate

The offer rate that you might expect if the predicted grades and subject choice of applicants were the only factors that influenced whether an applicant was made an offer by the provider. The average offer rate is calculated by dividing applicants according to their specific combination of grades (for A levels the best three predicted grades are used, for BTECs, International Baccalaureate and Scottish Highers and Advanced Highers, predicted grades along with any grades already achieved upon applying are used) and subject choice. For each combination the number of main scheme offers is divided by the number of main scheme applications, to give an overall offer rate. This is then multiplied by the number of applications made by the group for which the average offer rate is being calculated (for example POLAR3 quintile 1), to give an average number of offers for that group. These average number of offers are then added together across all combinations of predicted grade and subject and divided by the number of main scheme applications from the group to give the average offer rate.

The average offer rate does not attempt to control for any other factors that may play a part in the decision to make an offer, such as the subject of the qualifications studied, their relevance to a course, or the grade in each subject; higher numbers of A levels being studied; the exact profile of grades predicted; personal statements; teacher references; interviews; or any other criteria (such as work experience or portfolios) that may be part of the admissions decision.

This statistic is only reported for 18 year olds.

Contribution of group to the average offer rate

The way in which the average offer rate is defined means that the pattern of application and offers of a group (for example POLAR3 quintile 1) will always contribute, in part, to the average offer rate for that group. When this contribution is large, the average offer rate will mainly reflect the patterns for the group, meaning that the value of the average offer rate will be similar to the offer rate, the percentage point difference statistic will be small, and any real difference between the offer rate and what might be expected given the predicted grades and subject choices of the applicants will be difficult to detect.

Values of the contribution of group to the average offer rate range between 0 and 1. The closer the value is to 1 the greater the contribution a group makes to its own average offer rate.

This statistic is only reported for 18 year olds.

Placed June deadline applicants

An applicant who has been placed for entry into higher education at the provider through a June deadline application.

Placed June deadline applicants per 10,000 population

The number of UK domiciled 18 year old placed June deadline applicants at the provider divided by the number of UK 18 year olds in the population, multiplied by 10,000. This gives the number of 18 year olds, for every 10,000 in the population, that were placed at the provider through one of their June deadline applications. It is an alternative way of expressing the entry rate to a provider, but for placed June deadline applicants only. By referencing the underlying population this statistic shows how the number of placed June deadline applicants is changing in relation to the available pool of potential 18 year old applicants and so gives the chance that somebody from the group will be placed at a provider through a June deadline application.

This statistic is only reported for 18 year olds.

June deadline applications

An application (or choice) to a course in higher education to the provider that is made by the June 30 deadline. Each applicant can make up to five choices this way. The number of June deadline applications does not include choices made through the following routes: Clearing, Extra, Adjustment and RPAs. Applications made to October deadline courses received after the October deadline are not included in these statistics.

June deadline applicants

The number of applicants that made at least one application to the provider by the June 30 deadline.

June deadline applicants per 10,000 population

The number of UK domiciled 18 year old June deadline applicants to the provider divided by the number of UK 18 year olds in the population, multiplied by 10,000. This gives the number of 18 year olds, for every 10,000 in the population, who applied by the June 30 deadline. It is equivalent to the application rate. By referencing the underlying population this statistic shows how the number of June deadline applicants is changing in relation to the available pool of potential 18 year old applicants and so gives the chance that somebody from the group will apply to a provider by the June 30 deadline.

This statistic is only reported for 18 year olds.

Offers

An offer is defined as a provider's decision in response to an application to offer a place to an applicant, often subject to the applicant satisfying academic and/or other criteria, via a June deadline application (i.e. does not cover choices made through the following routes: Clearing, Extra, Adjustment and RPAs).

Offer rate

The number of offers made divided by the number of June deadline applications. This gives the proportion of all June deadline applications to the provider that received an offer.

Percentage point difference between offer rate and average offer rate

The offer rate minus the average offer rate.

The percentage point difference can be compared to the expected range of statistical variation resulting from the calculation of the average offer rate using the Average Offer Rate Lookup Table. Where the value of the percentage point difference lies outside of this range, the percentage point difference may be considered to represent a real difference between the offer rate and the average offer rate.

Other definitions

Age

This analysis uses country-specific age definitions that align with the cut off points for school and college cohorts within the different administrations of the UK. For England and Wales, ages are defined on the 31 August, for Northern Ireland on the 1 July and for Scotland on the 28 February the following year. Defining ages in this way matches the assignment of children to school cohorts. For applicants outside of the UK a cohort cut off of 31 August has been used.

Provider

A higher education provider - a university or college.

UK domiciled

Declared area of permanent residence within England, Northern Ireland, Scotland and Wales. Applicants from the Channel Islands and Isle of Man are not included.