

A30 Abertay University

Cycle years: 2010 - 2015

Cycle Reference Point: End of Cycle

Applicant coverage: UK domiciled

Reporting groups: Sex, POLAR3, SIMD, ethnic group

Applicant statistics: June deadline applicants, placed June deadline applicants, all placed applicants, June deadline applicants per 10,000 population, placed June deadline applicants per 10,000 population, all placed applicants per 10,000 population

Application statistics: June deadline applications, offers, offer rate, average offer rate, percentage point difference between offer rate and average offer rate, contribution of group to the average offer rate

Non-disclosure controls: To avoid the disclosure of information about any individual the following measures are taken

- Applicants, placed applicants, applications and offers are rounded to the nearest 5.
- Applicants/placed applicants per 10,000 population figures are reported as 0 if the applicant/placed applicant figures are rounded to 0.
- All statistics related to the offer rate are not reported when the number of applications for a group is less than 10. The percentage point difference between the offer rate and the average offer rate is not reported when the number of applications for a group is less than 50.
- Offer rates are reported as 0% if there are fewer than 5 offers, and 100% if the number of offers is within 5 of the number of applications. When the offer rate is reported as 0% or 100%, it is reported in italics.

Contents:

18 year old applicants:	P.1
18 year old applications:	P.2
18 year old applicants by sex:	P.3
18 year old applications by sex:	P.4
18 year old applicants by POLAR3 quintile:	P.7
18 year old applications by POLAR3 quintile:	P.8
18 year old, Scotland domiciled applicants by SIMD quintile:	P.11
18 year old, Scotland domiciled applications by SIMD quintile:	P.12
18 year old applicants by ethnic group:	P.15
18 year old applications by ethnic group:	P.16
Applicants (all ages):	P.19
Applications (all ages):	P.20
Applicants (all ages) by sex:	P.21
Applications (all ages) by sex:	P.22
Applicants (all ages) by POLAR3 quintile:	P.23
Applications (all ages) by POLAR3 quintile:	P.24
Scotland domiciled applicants (all ages) by SIMD quintile:	P.25
Scotland domiciled applications (all ages) by SIMD quintile:	P.26
Applicants (all ages) by ethnic group:	P.27
Applications (all ages) by ethnic group:	P.28

P.1 18 year old applicants

Statistic	2010	2011	2012	2013	2014	2015
June deadline applicants	1,730	2,180	2,100	1,820	1,715	1,515
Placed June deadline applicants	520	455	350	295	260	200
All placed applicants	735	555	460	360	290	280
June deadline applicants per 10,000 population	21.9	28.3	27.1	23.9	22.7	19.8
Placed June deadline applicants per 10,000	6.6	5.9	4.5	3.9	3.5	2.6
All placed applicants per 10,000 population	9.3	7.2	5.9	4.7	3.9	3.7

P.2 18 year old applications

Statistic	2010	2011	2012	2013	2014	2015
June deadline applications	2,210	2,780	2,575	2,210	2,055	1,775
Offers	2,045	1,990	2,000	1,875	1,825	1,485
Offer rate	92.6%	71.6%	77.6%	84.8%	88.8%	83.7%

P.3 18 year old applicants by sex

Statistic	Sex	2010	2011	2012	2013	2014	2015
June deadline applicants	Men	845	1,110	985	930	805	750
	Women	885	1,070	1,115	895	910	765
Placed June deadline applicants	Men	285	225	190	155	130	100
	Women	235	230	160	140	130	100
All placed applicants	Men	385	285	240	185	145	145
	Women	350	270	220	175	145	135
June deadline applicants per 10,000 population	Men	21.0	28.2	24.8	23.8	20.8	19.1
	Women	22.8	28.4	29.6	24.1	24.8	20.5
Placed June deadline applicants per 10,000 population	Men	7.1	5.7	4.8	4.0	3.4	2.6
	Women	6.1	6.1	4.3	3.8	3.6	2.6
All placed applicants per 10,000 population	Men	9.6	7.2	6.1	4.7	3.8	3.7
	Women	9.0	7.2	5.8	4.8	4.0	3.6

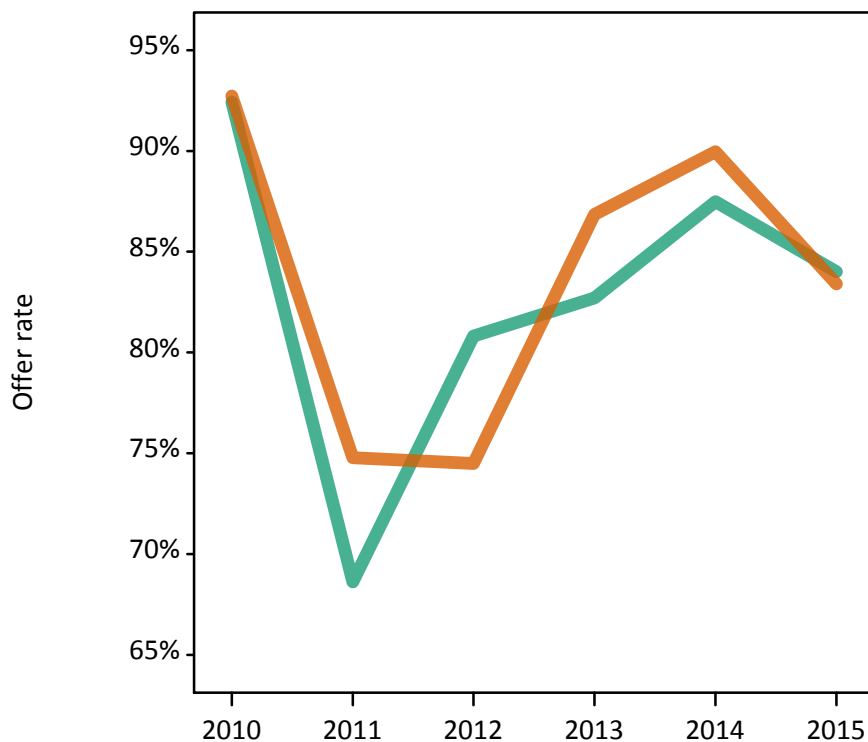
P.4 18 year old applications by sex

Statistic	Sex	2010	2011	2012	2013	2014	2015
June deadline applications	Men	1,125	1,450	1,255	1,115	1,000	920
	Women	1,085	1,330	1,320	1,095	1,055	855
Offers	Men	1,040	995	1,015	925	875	770
	Women	1,010	995	985	950	950	715
Offer rate	Men	92.4%	68.6%	80.8%	82.7%	87.5%	84.0%
	Women	92.7%	74.8%	74.5%	86.8%	90.0%	83.4%
Average offer rate	Men	92.2%	68.9%	81.0%	82.9%	88.5%	84.3%
	Women	93.0%	74.5%	74.3%	86.7%	89.0%	83.1%
Percentage point difference between offer rate and average offer rate	Men	0.2	-0.3	-0.2	-0.2	-1.0	-0.3
	Women	-0.2	0.3	0.2	0.2	0.9	0.3
Contribution of group to the average offer rate	Men	0.715	0.709	0.700	0.693	0.700	0.723
	Women	0.706	0.683	0.715	0.687	0.716	0.702

P.5 18 year old offer rate by sex

Note: The line for a group is not plotted when that group made fewer than 10 applications in any of the years from 2010-2015.

Men
Women



P.6 Percentage point difference between 18 year old offer rate and average offer rate by sex

Note: The line for a group is not plotted when that group made fewer than 50 applications in any of the years from 2010-2015.

Men
Women



P.7 18 year old applicants by POLAR3 quintile

Statistic	POLAR3 quintile	2010	2011	2012	2013	2014	2015
June deadline applicants	Quintile 1	95	145	150	125	140	125
	Quintile 2	210	325	285	240	225	245
	Quintile 3	300	385	335	300	295	250
	Quintile 4	515	590	555	510	430	365
	Quintile 5	605	725	765	640	615	525
Placed June deadline applicants	Quintile 1	30	25	20	20	10	10
	Quintile 2	60	80	45	30	30	20
	Quintile 3	85	70	55	30	40	30
	Quintile 4	145	120	95	95	75	60
	Quintile 5	200	155	140	120	100	75
All placed applicants	Quintile 1	40	35	25	30	15	15
	Quintile 2	80	90	50	35	30	30
	Quintile 3	120	90	70	45	45	40
	Quintile 4	210	140	125	115	85	90
	Quintile 5	280	200	185	140	115	100
June deadline applicants per 10,000 population	Quintile 1	6.4	9.9	10.7	9.1	10.0	8.8
	Quintile 2	13.8	21.6	19.1	16.3	15.4	16.6
	Quintile 3	18.8	25.1	21.7	19.5	19.7	16.4
	Quintile 4	32.4	37.8	34.9	32.7	28.0	23.3
	Quintile 5	35.7	43.7	45.4	38.7	37.7	31.4
Placed June deadline applicants per 10,000 population	Quintile 1	1.9	1.9	1.3	1.4	0.9	0.8
	Quintile 2	4.0	5.3	3.0	2.0	2.2	1.4
	Quintile 3	5.4	4.5	3.4	2.1	2.8	2.0
	Quintile 4	9.2	7.7	5.9	6.1	5.0	4.0
	Quintile 5	11.8	9.3	8.3	7.1	6.0	4.5
All placed applicants per 10,000 population	Quintile 1	2.7	2.6	1.8	2.0	1.0	1.2
	Quintile 2	5.3	5.9	3.3	2.5	2.2	2.1
	Quintile 3	7.5	5.7	4.6	2.8	3.1	2.5
	Quintile 4	13.2	8.9	7.8	7.3	5.5	5.8
	Quintile 5	16.5	12.1	11.1	8.3	7.0	6.0

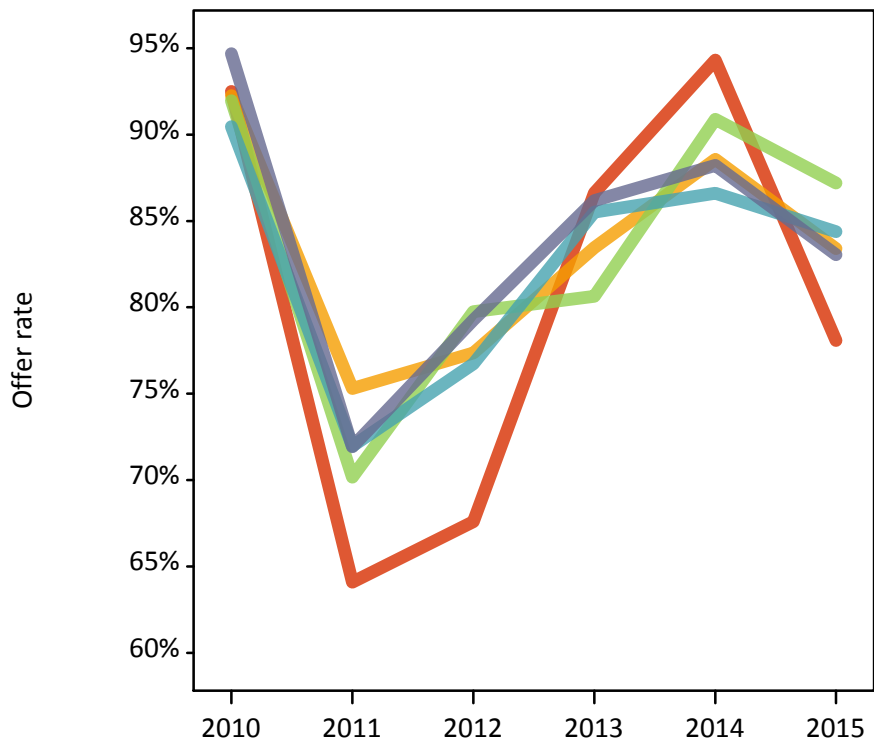
P.8 18 year old applications by POLAR3 quintile

Statistic	POLAR3 quintile	2010	2011	2012	2013	2014	2015
June deadline applications	Quintile 1	120	180	180	155	160	145
	Quintile 2	270	415	350	290	270	285
	Quintile 3	375	495	405	340	350	290
	Quintile 4	650	735	680	620	515	430
	Quintile 5	790	945	955	795	755	625
Offers	Quintile 1	110	115	120	135	150	115
	Quintile 2	250	315	270	240	240	235
	Quintile 3	345	350	325	275	320	250
	Quintile 4	590	530	520	530	445	360
	Quintile 5	745	680	755	685	665	520
Offer rate	Quintile 1	92.5%	64.1%	67.6%	86.6%	94.3%	78.1%
	Quintile 2	92.3%	75.3%	77.4%	83.4%	88.6%	83.4%
	Quintile 3	92.0%	70.2%	79.8%	80.6%	90.9%	87.2%
	Quintile 4	90.5%	72.0%	76.7%	85.5%	86.6%	84.4%
	Quintile 5	94.7%	71.9%	79.3%	86.2%	88.2%	83.0%
Average offer rate	Quintile 1	92.8%	66.8%	73.2%	86.6%	91.2%	79.7%
	Quintile 2	90.5%	73.4%	78.1%	82.8%	89.5%	82.5%
	Quintile 3	92.6%	73.3%	78.3%	83.4%	88.7%	86.3%
	Quintile 4	92.0%	70.9%	75.9%	84.7%	87.2%	84.1%
	Quintile 5	93.7%	71.4%	79.1%	85.9%	89.1%	83.6%
Percentage point difference between offer rate and average offer rate	Quintile 1	-0.3	-2.8	-5.6	-0.0	3.1	-1.6
	Quintile 2	1.8	1.9	-0.8	0.7	-1.0	0.9
	Quintile 3	-0.7	-3.1	1.4	-2.7	2.2	0.9
	Quintile 4	-1.5	1.1	0.8	0.8	-0.6	0.2
	Quintile 5	1.0	0.5	0.1	0.3	-0.9	-0.6
Contribution of group to the average offer rate	Quintile 1	0.211	0.192	0.228	0.181	0.180	0.207
	Quintile 2	0.256	0.248	0.210	0.226	0.216	0.267
	Quintile 3	0.250	0.263	0.240	0.236	0.254	0.246
	Quintile 4	0.369	0.346	0.326	0.345	0.322	0.328
	Quintile 5	0.435	0.407	0.436	0.432	0.424	0.430

P.9 18 year old offer rate by POLAR3 quintile

Note: The line for a group is not plotted when that group made fewer than 10 applications in any of the years from 2010-2015.

- Quintile 1
- Quintile 2
- Quintile 3
- Quintile 4
- Quintile 5



P.10 Percentage point difference between 18 year old offer rate and average offer rate by POLAR3 quintile

Note: The line for a group is not plotted when that group made fewer than 50 applications in any of the years from 2010-2015.

- Quintile 1
- Quintile 2
- Quintile 3
- Quintile 4
- Quintile 5



P.11 18 year old, Scotland domiciled applicants by SIMD quintile

Statistic	SIMD quintile	2010	2011	2012	2013	2014	2015
June deadline applicants	Quintile 1	115	175	155	145	170	155
	Quintile 2	220	260	245	220	205	195
	Quintile 3	295	355	335	330	290	260
	Quintile 4	395	465	485	405	370	310
	Quintile 5	380	470	480	355	395	340
Placed June deadline applicants	Quintile 1	30	45	30	30	15	15
	Quintile 2	85	55	40	40	35	30
	Quintile 3	80	70	45	50	55	35
	Quintile 4	135	110	105	80	80	60
	Quintile 5	130	115	85	75	60	50
All placed applicants	Quintile 1	45	50	40	35	20	25
	Quintile 2	110	65	55	45	35	40
	Quintile 3	115	85	60	60	60	50
	Quintile 4	180	135	130	100	85	85
	Quintile 5	190	140	110	90	70	70
June deadline applicants per 10,000 population	Quintile 1	86.1	129.6	117.9	109.8	128.9	121.5
	Quintile 2	175.4	218.1	206.5	186.1	177.5	170.0
	Quintile 3	235.9	290.0	276.4	278.7	243.9	222.5
	Quintile 4	315.8	371.8	390.2	328.8	299.8	253.7
	Quintile 5	294.5	368.1	380.3	284.9	320.8	276.8
Placed June deadline applicants per 10,000 population	Quintile 1	22.8	33.0	24.5	24.4	13.0	11.8
	Quintile 2	69.2	44.1	34.0	33.3	28.4	25.5
	Quintile 3	64.4	57.0	35.6	42.0	45.7	29.3
	Quintile 4	109.5	87.3	86.1	64.6	63.0	49.8
	Quintile 5	102.0	91.8	68.3	61.0	46.9	42.6
All placed applicants per 10,000 population	Quintile 1	33.8	38.2	32.1	26.7	14.5	21.2
	Quintile 2	86.9	55.8	48.4	38.4	29.3	33.5
	Quintile 3	94.2	68.4	51.3	51.2	49.1	44.8
	Quintile 4	145.5	109.0	105.4	82.4	70.3	67.7
	Quintile 5	147.7	109.9	87.3	73.8	56.6	57.3

P.12 18 year old, Scotland domiciled applications by SIMD quintile

Statistic	SIMD quintile	2010	2011	2012	2013	2014	2015
June deadline applications	Quintile 1	165	230	195	185	205	185
	Quintile 2	290	355	305	265	265	240
	Quintile 3	390	465	410	400	350	295
	Quintile 4	510	610	640	530	465	375
	Quintile 5	505	625	595	440	470	405
Offers	Quintile 1	145	155	150	165	180	155
	Quintile 2	280	255	240	220	240	205
	Quintile 3	355	345	330	355	315	250
	Quintile 4	475	450	515	460	410	315
	Quintile 5	480	455	475	370	410	345
Offer rate	Quintile 1	87.7%	68.6%	77.2%	89.3%	88.7%	83.8%
	Quintile 2	95.9%	71.5%	79.0%	83.7%	90.2%	85.8%
	Quintile 3	91.8%	74.6%	80.2%	88.5%	89.8%	84.7%
	Quintile 4	93.9%	73.9%	80.6%	86.6%	88.1%	83.6%
	Quintile 5	95.1%	72.8%	80.1%	84.1%	87.1%	84.9%
Average offer rate	Quintile 1	92.0%	71.1%	78.7%	87.1%	87.8%	83.4%
	Quintile 2	93.2%	74.6%	79.1%	86.6%	88.7%	85.9%
	Quintile 3	93.1%	72.6%	78.0%	86.0%	88.3%	82.4%
	Quintile 4	94.1%	73.0%	81.3%	86.4%	87.9%	84.7%
	Quintile 5	94.0%	72.5%	80.4%	85.8%	89.6%	85.6%
Percentage point difference between offer rate and average offer rate	Quintile 1	-4.3	-2.5	-1.5	2.2	0.9	0.4
	Quintile 2	2.7	-3.1	-0.1	-2.9	1.4	-0.1
	Quintile 3	-1.3	1.9	2.2	2.5	1.5	2.3
	Quintile 4	-0.2	0.9	-0.7	0.2	0.2	-1.2
	Quintile 5	1.1	0.3	-0.3	-1.7	-2.5	-0.7
Contribution of group to the average offer rate	Quintile 1	0.124	0.127	0.127	0.134	0.146	0.177
	Quintile 2	0.185	0.181	0.173	0.163	0.177	0.188
	Quintile 3	0.243	0.238	0.224	0.242	0.229	0.238
	Quintile 4	0.304	0.299	0.325	0.318	0.299	0.277
	Quintile 5	0.320	0.306	0.315	0.275	0.303	0.308

P.13 18 year old, Scotland domiciled offer rate by SIMD quintile

Note: The line for a group is not plotted when that group made fewer than 10 applications in any of the years from 2010-2015.

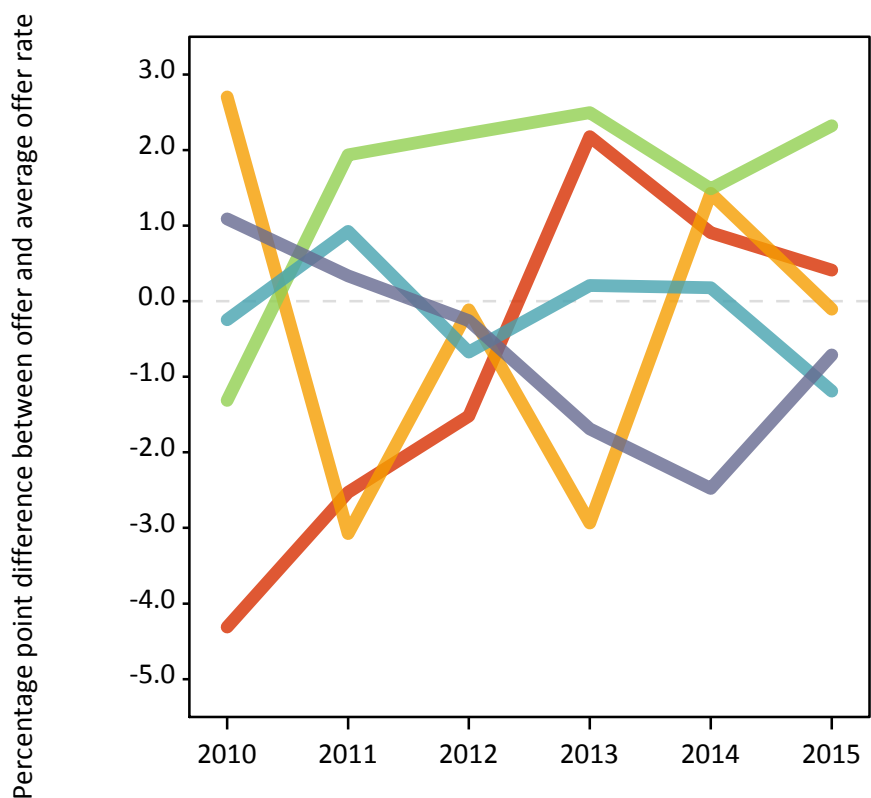
- Quintile 1
- Quintile 2
- Quintile 3
- Quintile 4
- Quintile 5



P.14 Percentage point difference between 18 year old, Scotland domiciled offer rate and average offer rate by SIMD quintile

Note: The line for a group is not plotted when that group made fewer than 50 applications in any of the years from 2010-2015.

- Quintile 1
- Quintile 2
- Quintile 3
- Quintile 4
- Quintile 5



P.15 18 year old applicants by ethnic group

Statistic	Ethnic group	2010	2011	2012	2013	2014	2015
June deadline applicants	Asian	35	40	55	45	45	35
	Black	10	15	25	15	25	20
	Mixed	25	25	25	35	30	35
	White	1,650	2,095	1,985	1,710	1,605	1,415
	Other	0	0	5	5	5	5
Placed June deadline applicants	Asian	10	5	10	10	5	5
	Black	5	0	0	0	0	5
	Mixed	10	0	0	5	5	5
	White	500	445	335	280	250	190
	Other	0	0	0	0	0	0
All placed applicants	Asian	15	10	15	10	5	10
	Black	5	5	5	5	0	5
	Mixed	10	5	0	5	5	5
	White	695	535	435	340	280	260
	Other	0	0	0	0	0	0
June deadline applicants per 10,000 population	Asian	5.7	6.3	8.8	7.1	6.6	5.1
	Black	4.2	6.2	8.2	5.7	8.2	6.3
	Mixed	11.7	9.9	10.4	12.9	9.7	11.0
	White	24.6	32.3	30.7	27.2	26.0	22.7
	Other	0.0	0.0	4.5	7.7	7.5	6.2
Placed June deadline applicants per 10,000 population	Asian	1.6	0.8	1.5	1.2	0.6	0.4
	Black	1.1	0.0	0.0	0.0	0.0	0.9
	Mixed	3.5	0.0	0.0	2.2	1.4	1.6
	White	7.5	6.8	5.2	4.4	4.1	3.0
	Other	0.0	0.0	0.0	0.0	0.0	0.0
All placed applicants per 10,000 population	Asian	2.7	1.3	2.5	1.4	0.6	1.1
	Black	2.3	1.1	1.4	1.0	0.0	1.9
	Mixed	4.3	1.2	0.0	2.6	1.4	2.3
	White	10.4	8.3	6.7	5.4	4.6	4.1
	Other	0.0	0.0	0.0	0.0	0.0	0.0

P.16 18 year old applications by ethnic group

Statistic	Ethnic group	2010	2011	2012	2013	2014	2015
June deadline applications	Asian	40	55	70	55	55	40
	Black	15	20	25	20	25	20
	Mixed	35	35	35	45	35	35
	White	2,120	2,670	2,440	2,075	1,925	1,665
	Other	0	0	5	10	10	5
Offers	Asian	35	25	50	45	45	30
	Black	10	5	15	15	25	15
	Mixed	30	20	20	35	30	30
	White	1,960	1,940	1,910	1,765	1,710	1,400
	Other	0	0	0	5	5	5
Offer rate	Asian	100.0%	43.4%	70.6%	82.1%	85.5%	80.0%
	Black	100.0%	36.8%	60.9%	70.0%	100.0%	72.7%
	Mixed	100.0%	58.8%	58.8%	79.1%	100.0%	83.3%
	White	92.6%	72.6%	78.3%	85.1%	88.8%	84.1%
	Other	N/A	N/A	N/A	N/A	N/A	N/A
Average offer rate	Asian	96.0%	55.2%	70.4%	82.6%	86.8%	82.6%
	Black	95.9%	46.9%	71.9%	75.9%	90.8%	73.6%
	Mixed	95.3%	64.4%	84.4%	83.1%	87.8%	85.4%
	White	92.4%	72.2%	77.7%	84.9%	88.8%	83.9%
	Other	N/A	N/A	N/A	N/A	N/A	N/A
Percentage point difference between offer rate and average offer rate	Asian	N/A	-11.8	0.2	-0.5	-1.3	N/A
	Black	N/A	N/A	N/A	N/A	N/A	N/A
	Mixed	N/A	N/A	N/A	N/A	N/A	N/A
	White	0.1	0.4	0.5	0.1	0.0	0.2
	Other	N/A	N/A	N/A	N/A	N/A	N/A
Contribution of group to the average offer rate	Asian	0.219	0.128	0.144	0.132	0.155	0.154
	Black	0.093	0.185	0.205	0.258	0.270	0.304
	Mixed	0.213	0.140	0.139	0.171	0.169	0.105
	White	0.967	0.965	0.955	0.951	0.948	0.949
	Other	N/A	N/A	N/A	N/A	N/A	N/A

P.17 18 year old offer rate by ethnic group

Note: The line for a group is not plotted when that group made fewer than 10 applications in any of the years from 2010-2015.

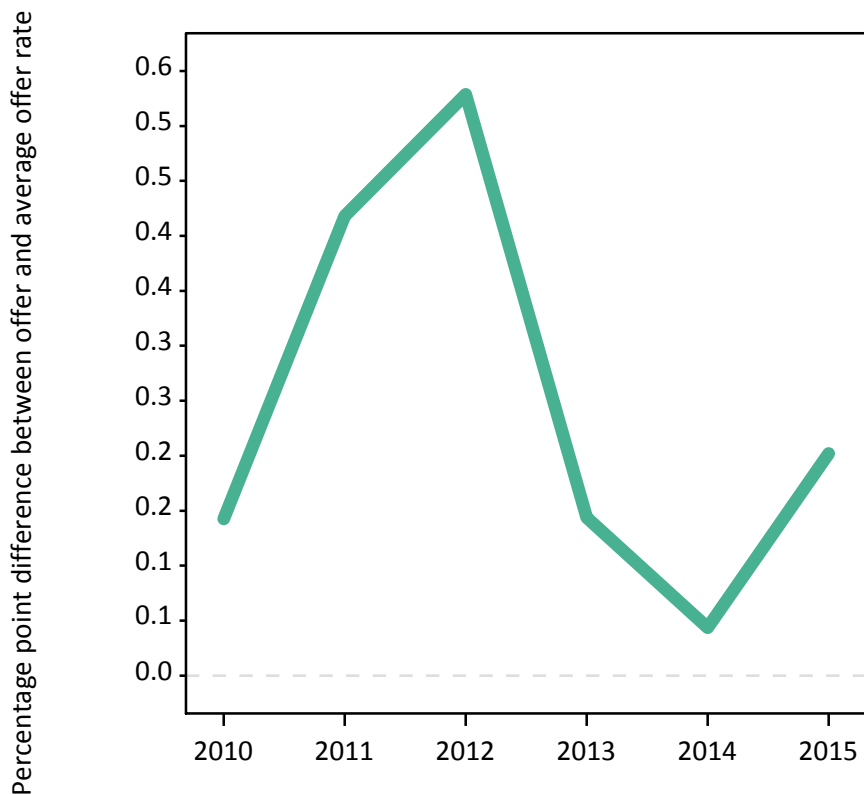
- Asian
- Black
- Mixed
- White
- Other



P.18 Percentage point difference between 18 year old offer rate and average offer rate by ethnic group

Note: The line for a group is not plotted when that group made fewer than 50 applications in any of the years from 2010-2015.

- Asian
- Black
- Mixed
- White
- Other



P.19 Applicants (all ages)

Statistic	2010	2011	2012	2013	2014	2015
June deadline applicants	3,675	4,485	4,475	3,915	3,770	3,380
Placed June deadline applicants	1,270	1,000	935	880	850	795
All placed applicants	1,735	1,225	1,145	1,015	920	985

P.20 Applications (all ages)

Statistic	2010	2011	2012	2013	2014	2015
June deadline applications	4,710	5,720	5,695	4,875	4,735	4,190
Offers	4,095	3,630	3,780	3,605	3,680	3,215
Offer rate	86.9%	63.4%	66.4%	73.9%	77.7%	76.7%

P.21 Applicants (all ages) by sex

Statistic	Sex	2010	2011	2012	2013	2014	2015
June deadline applicants	Men	1,835	2,310	2,200	2,130	2,005	1,765
	Women	1,840	2,175	2,270	1,785	1,770	1,620
Placed June deadline applicants	Men	685	545	510	515	470	450
	Women	585	455	425	365	380	345
All placed applicants	Men	925	685	615	580	505	550
	Women	815	540	535	435	415	435

P.22 Applications (all ages) by sex

Statistic	Sex	2010	2011	2012	2013	2014	2015
June deadline applications	Men	2,405	2,985	2,915	2,670	2,570	2,265
	Women	2,305	2,735	2,780	2,205	2,165	1,925
Offers	Men	2,080	1,865	1,985	1,940	1,915	1,705
	Women	2,020	1,765	1,795	1,665	1,765	1,505
Offer rate	Men	86.4%	62.4%	68.1%	72.6%	74.6%	75.3%
	Women	87.5%	64.5%	64.6%	75.4%	81.4%	78.3%

P.23 Applicants (all ages) by POLAR3 quintile

Statistic	POLAR3 quintile	2010	2011	2012	2013	2014	2015
June deadline applicants	Quintile 1	310	370	370	345	325	320
	Quintile 2	520	670	630	555	535	530
	Quintile 3	595	745	695	625	620	550
	Quintile 4	1,055	1,250	1,235	1,055	955	835
	Quintile 5	1,185	1,430	1,525	1,325	1,325	1,140
Placed June deadline applicants	Quintile 1	120	80	80	65	60	70
	Quintile 2	180	165	130	125	130	120
	Quintile 3	185	145	135	115	125	120
	Quintile 4	370	305	265	265	240	225
	Quintile 5	410	305	325	310	295	255
All placed applicants	Quintile 1	155	100	95	85	60	85
	Quintile 2	220	190	145	140	135	140
	Quintile 3	250	180	165	135	140	145
	Quintile 4	495	355	325	295	260	285
	Quintile 5	610	400	415	355	330	325

P.24 Applications (all ages) by POLAR3 quintile

Statistic	POLAR3 quintile	2010	2011	2012	2013	2014	2015
June deadline applications	Quintile 1	405	475	470	440	400	410
	Quintile 2	650	835	810	690	665	655
	Quintile 3	740	975	875	755	775	680
	Quintile 4	1,355	1,590	1,530	1,335	1,190	1,030
	Quintile 5	1,555	1,835	1,990	1,645	1,705	1,410
Offers	Quintile 1	335	275	290	315	305	305
	Quintile 2	555	540	525	515	505	495
	Quintile 3	645	620	590	530	590	530
	Quintile 4	1,155	1,025	1,015	985	940	815
	Quintile 5	1,390	1,160	1,350	1,255	1,335	1,060
Offer rate	Quintile 1	83.6%	58.3%	61.4%	72.1%	76.3%	74.3%
	Quintile 2	85.7%	64.6%	64.9%	74.8%	76.2%	75.6%
	Quintile 3	87.3%	63.5%	67.2%	69.7%	76.3%	78.4%
	Quintile 4	85.2%	64.6%	66.2%	73.9%	79.0%	79.1%
	Quintile 5	89.6%	63.2%	67.9%	76.1%	78.4%	75.2%

P.25 Scotland domiciled applicants (all ages) by SIMD quintile

Statistic	SIMD quintile	2010	2011	2012	2013	2014	2015
June deadline applicants	Quintile 1	465	560	535	495	490	460
	Quintile 2	565	640	630	575	530	550
	Quintile 3	595	730	735	670	640	545
	Quintile 4	760	900	975	805	795	690
	Quintile 5	680	850	865	725	775	660
Placed June deadline applicants	Quintile 1	180	140	135	130	115	115
	Quintile 2	245	155	135	150	130	170
	Quintile 3	190	175	150	155	160	150
	Quintile 4	265	220	245	200	215	185
	Quintile 5	250	205	185	180	160	145
All placed applicants	Quintile 1	230	165	160	145	125	140
	Quintile 2	290	190	175	165	140	195
	Quintile 3	270	200	185	180	170	190
	Quintile 4	375	270	290	230	235	230
	Quintile 5	370	255	230	210	175	190

P.26 Scotland domiciled applications (all ages) by SIMD quintile

Statistic	SIMD quintile	2010	2011	2012	2013	2014	2015
June deadline applications	Quintile 1	625	725	710	650	615	590
	Quintile 2	745	875	840	735	720	720
	Quintile 3	780	930	935	830	820	685
	Quintile 4	980	1,200	1,310	1,050	1,025	890
	Quintile 5	915	1,105	1,095	910	975	800
Offers	Quintile 1	510	435	445	475	445	445
	Quintile 2	660	545	530	510	530	560
	Quintile 3	690	620	620	630	630	525
	Quintile 4	880	795	920	805	830	700
	Quintile 5	825	740	795	690	765	620
Offer rate	Quintile 1	81.0%	59.8%	62.7%	73.0%	71.9%	75.3%
	Quintile 2	88.7%	62.5%	62.8%	69.7%	73.6%	77.4%
	Quintile 3	88.6%	66.5%	66.3%	75.7%	76.8%	77.0%
	Quintile 4	89.8%	66.1%	70.3%	76.8%	80.7%	78.4%
	Quintile 5	90.0%	66.8%	72.6%	75.9%	78.7%	77.4%

P.27 Applicants (all ages) by ethnic group

Statistic	Ethnic group	2010	2011	2012	2013	2014	2015
June deadline applicants	Asian	105	130	135	130	115	105
	Black	75	85	85	80	90	60
	Mixed	50	65	75	70	65	70
	White	3,425	4,185	4,155	3,595	3,475	3,115
	Other	5	10	10	15	10	15
Placed June deadline applicants	Asian	35	15	20	30	20	15
	Black	20	10	5	10	15	5
	Mixed	10	10	10	15	15	15
	White	1,205	960	890	820	795	750
	Other	0	0	0	0	0	0
All placed applicants	Asian	55	25	35	35	20	30
	Black	30	15	15	15	15	10
	Mixed	20	15	15	20	15	20
	White	1,590	1,140	1,055	940	860	910
	Other	0	0	5	0	0	5

P.28 Applications (all ages) by ethnic group

Statistic	Ethnic group	2010	2011	2012	2013	2014	2015
June deadline applications	Asian	120	160	165	175	135	125
	Black	85	90	95	85	100	65
	Mixed	60	85	90	90	75	90
	White	4,425	5,355	5,315	4,480	4,395	3,875
	Other	5	10	15	20	15	15
Offers	Asian	100	65	100	115	105	90
	Black	50	30	35	45	60	35
	Mixed	55	40	60	60	55	65
	White	3,880	3,480	3,570	3,350	3,435	2,995
	Other	5	5	10	10	10	5
Offer rate	Asian	84.0%	41.4%	59.4%	65.7%	77.2%	73.4%
	Black	59.5%	34.8%	37.6%	54.1%	62.0%	56.9%
	Mixed	86.9%	47.6%	65.6%	70.5%	74.0%	75.3%
	White	87.7%	65.0%	67.2%	74.8%	78.2%	77.3%
	Other	N/A	0.0%	62.5%	66.7%	100.0%	41.2%

Technical Notes and Definitions

UCAS undergraduate scheme

Adjustment

Adjustment allows applicants who have met and exceeded the terms of their conditional firm offer to seek and find a place at another provider whilst keeping their place at their original firm choice provider.

Clearing

Clearing is a route for applicants that are not placed and holding no offers to find a place on courses with vacancies.

Cycle year

The UCAS application cycle which runs from September to October the following year. For example the 2015 cycle runs from September 2014 through to October 2015.

End of cycle

The point in the cycle to which the numbers in this report refer, and the point at which the cycle is closed such that no more applications or offers can be made, and no more applicants can be placed. Numbers reported at the end of cycle exclude information on a small number of applicants who cancelled during the cycle.

Extra

Applicants who are unsuccessful in obtaining an offer or decline all offers may be eligible to apply through Extra, where they can apply to one further course at a time. Extra operates from 25 February until early July. It provides applicants who are eligible the possibility of obtaining an offer before exam results are published and Clearing starts.

June 30 deadline

The deadline for main scheme applications. Applicants who apply after this date will go directly into Clearing.

Record of Prior Acceptance (RPA)

RPA is an acceptance route used when a provider informs UCAS of applicants it has accepted outside of the normal application process (e.g. individuals who have applied directly to the provider).

Reporting groups

Ethnic group

High level grouping of ethnic origin as declared by the applicant: 'White', 'Black', 'Asian', 'Mixed', 'Other', 'Unknown'. Applicants who declare themselves as 'Unknown' ethnic origin are not reported in these tables, but are included in the associated csv data file.

POLAR3 quintile

Developed by HEFCE, POLAR3 classifies small areas across the UK into five groups according to their level of young participation in Higher Education. Each of these groups represents around 20 per cent of young people and is ranked from Quintile 1 (areas with the lowest young participation rates, considered as the most disadvantaged) to Quintile 5 (highest young participation rates, considered most advantaged). POLAR3 is based on the participation rates of young people between 2005 and 2009 who entered Higher Education between 2005-06 and 2010-11, therefore is most suitable for applicants aged 19 and under. These groups are assigned using the postcode declared by the applicant at the time of their application. If a UK postcode is invalid, considered unsafe for measurement or there is no link to Census geography possible then the applicant is not assigned to a quintile. Applicants with no POLAR3 quintile are not reported.

Sex

Sex as declared by the applicant.

SIMD quintile

Scottish index of multiple deprivation (SIMD) for 2012 identifies small area concentrations of multiple deprivation across all of Scotland, providing a relative measure of deprivation amongst 6505 small areas (data zones) based on 7 socio-economic domains. These small areas are classified into five groups ranked from Quintile 1 (considered the most deprived) to Quintile 5 (considered least deprived), with equal populations in each quintile. Quintiles are assigned using the postcode declared by the applicant, applicants declaring invalid postcodes are classified as 'Not assigned' and are not reported.

SIMD is only defined for applicants domiciled in Scotland, therefore any applicants domiciled outside of Scotland cannot be assigned to an SIMD quintile and so are not reported for this measure.

SIMD is only reported for providers in Scotland. Application and entry rates by SIMD are reported in the 2015 End of Cycle Report and the 2016 cycle January deadline application rate report.

Statistics reported in the tables

All placed applicants

The number of applicants placed for entry into higher education at the provider through one of their choices, including any choices made through Extra, or via Adjustment, Clearing or RPA.

All placed applicants per 10,000 population

The number of total UK domiciled 18 year old placed applicants for entry into higher education at the provider divided by the number of UK 18 year olds in the population, multiplied by 10,000. This gives the number of 18 year olds, for every 10,000 in the population, that were placed at the provider through one of their choices, including any choices made through Extra, or via Adjustment, Clearing or RPA. It is an alternative way of expressing the entry rate to a provider. By referencing the underlying population this statistic shows how the number of placed applicants is changing in relation to the available pool of potential applicants and so gives the chance that somebody from the group will be placed at a provider.

This statistic is only reported for 18 year olds.

Average offer rate

The offer rate that you might expect if the predicted grades and subject choice of applicants were the only factors that influenced whether an applicant was made an offer by the provider. The average offer rate is calculated by dividing applicants according to their specific combination of grades (for A levels the best three predicted grades are used, for BTECs, International Baccalaureate and Scottish Highers and Advanced Highers, predicted grades along with any grades already achieved upon applying are used) and subject choice. For each combination the number of main scheme offers is divided by the number of main scheme applications, to give an overall offer rate. This is then multiplied by the number of applications made by the group for which the average offer rate is being calculated (for example POLAR3 quintile 1), to give an average number of offers for that group. These average number of offers are then added together across all combinations of predicted grade and subject and divided by the number of main scheme applications from the group to give the average offer rate.

The average offer rate does not attempt to control for any other factors that may play a part in the decision to make an offer, such as the subject of the qualifications studied, their relevance to a course, or the grade in each subject; higher numbers of A levels being studied; the exact profile of grades predicted; personal statements; teacher references; interviews; or any other criteria (such as work experience or portfolios) that may be part of the admissions decision.

This statistic is only reported for 18 year olds.

Contribution of group to the average offer rate

The way in which the average offer rate is defined means that the pattern of application and offers of a group (for example POLAR3 quintile 1) will always contribute, in part, to the average offer rate for that group. When this contribution is large, the average offer rate will mainly reflect the patterns for the group, meaning that the value of the average offer rate will be similar to the offer rate, the percentage point difference statistic will be small, and any real difference between the offer rate and what might be expected given the predicted grades and subject choices of the applicants will be difficult to detect.

Values of the contribution of group to the average offer rate range between 0 and 1. The closer the value is to 1 the greater the contribution a group makes to its own average offer rate.

This statistic is only reported for 18 year olds.

Placed June deadline applicants

An applicant who has been placed for entry into higher education at the provider through a June deadline application.

Placed June deadline applicants per 10,000 population

The number of UK domiciled 18 year old placed June deadline applicants at the provider divided by the number of UK 18 year olds in the population, multiplied by 10,000. This gives the number of 18 year olds, for every 10,000 in the population, that were placed at the provider through one of their June deadline applications. It is an alternative way of expressing the entry rate to a provider, but for placed June deadline applicants only. By referencing the underlying population this statistic shows how the number of placed June deadline applicants is changing in relation to the available pool of potential 18 year old applicants and so gives the chance that somebody from the group will be placed at a provider through a June deadline application.

This statistic is only reported for 18 year olds.

June deadline applications

An application (or choice) to a course in higher education to the provider that is made by the June 30 deadline. Each applicant can make up to five choices this way. The number of June deadline applications does not include choices made through the following routes: Clearing, Extra, Adjustment and RPAs. Applications made to October deadline courses received after the October deadline are not included in these statistics.

June deadline applicants

The number of applicants that made at least one application to the provider by the June 30 deadline.

June deadline applicants per 10,000 population

The number of UK domiciled 18 year old June deadline applicants to the provider divided by the number of UK 18 year olds in the population, multiplied by 10,000. This gives the number of 18 year olds, for every 10,000 in the population, who applied by the June 30 deadline. It is equivalent to the application rate. By referencing the underlying population this statistic shows how the number of June deadline applicants is changing in relation to the available pool of potential 18 year old applicants and so gives the chance that somebody from the group will apply to a provider by the June 30 deadline.

This statistic is only reported for 18 year olds.

Offers

An offer is defined as a provider's decision in response to an application to offer a place to an applicant, often subject to the applicant satisfying academic and/or other criteria, via a June deadline application (i.e. does not cover choices made through the following routes: Clearing, Extra, Adjustment and RPAs).

Offer rate

The number of offers made divided by the number of June deadline applications. This gives the proportion of all June deadline applications to the provider that received an offer.

Percentage point difference between offer rate and average offer rate

The offer rate minus the average offer rate.

The percentage point difference can be compared to the expected range of statistical variation resulting from the calculation of the average offer rate using the Average Offer Rate Lookup Table. Where the value of the percentage point difference lies outside of this range, the percentage point difference may be considered to represent a real difference between the offer rate and the average offer rate.

Other definitions

Age

This analysis uses country-specific age definitions that align with the cut off points for school and college cohorts within the different administrations of the UK. For England and Wales, ages are defined on the 31 August, for Northern Ireland on the 1 July and for Scotland on the 28 February the following year. Defining ages in this way matches the assignment of children to school cohorts. For applicants outside of the UK a cohort cut off of 31 August has been used.

Provider

A higher education provider - a university or college.

UK domiciled

Declared area of permanent residence within England, Northern Ireland, Scotland and Wales. Applicants from the Channel Islands and Isle of Man are not included.