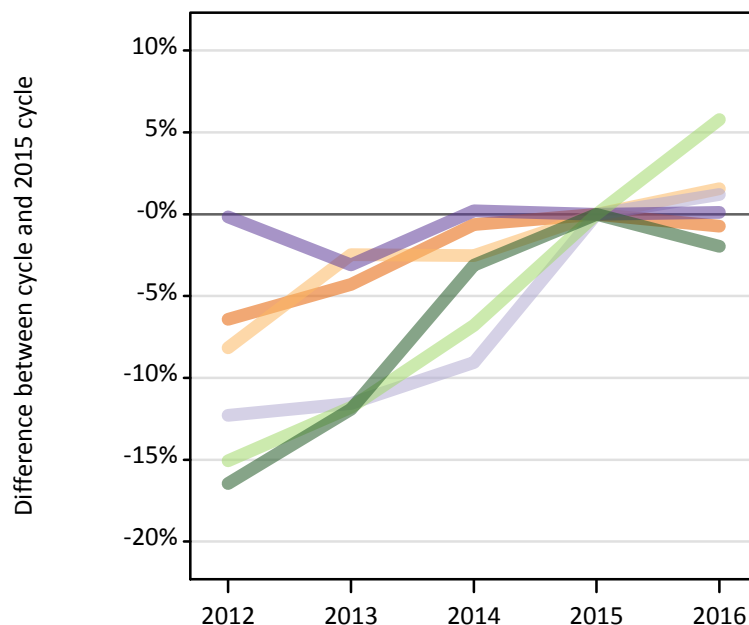
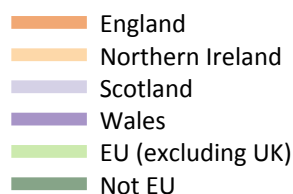


## Applicants at the interim April comparison point (2016 cycle)

### G.1 Applicants by domicile group at the April interim comparison point (third Monday in month)

Difference between cycle and 2015 cycle



### G.2 Applicants by domicile group at the April interim comparison point (third Monday in month)

Domicile of applicant	2012	2013	2014	2015	2016
England	408,670	417,920	433,900	436,680	433,500
Northern Ireland	18,850	20,020	20,010	20,530	20,850
Scotland	41,240	41,580	42,760	47,020	47,590
Wales	22,310	21,650	22,390	22,340	22,370
--UK	491,060	501,160	519,050	526,570	524,300
EU (excluding UK)	39,070	40,570	42,880	46,000	48,660
Not EU	53,200	56,090	61,690	63,680	62,430
--All	583,330	597,830	623,620	636,250	635,390

### G.3 Applicants by domicile group at the April interim comparison point (third Monday in month)

Difference between cycle and 2015 cycle

Domicile of applicant	2012	2013	2014	2015	2016
England	-6%	-4%	-1%	0%	-1%
Northern Ireland	-8%	-2%	-3%	0%	2%
Scotland	-12%	-12%	-9%	0%	1%
Wales	0%	-3%	0%	0%	0%
--UK	-7%	-5%	-1%	0%	0%
EU (excluding UK)	-15%	-12%	-7%	0%	6%
Not EU	-16%	-12%	-3%	0%	-2%
--All	-8%	-6%	-2%	0%	0%

## G.4 Technical notes and definitions

Applicants have been able to submit applications for all 2016 courses since early September.

Applicants who submit their applications to UCAS by the January deadline are considered 'on time' applicants for the large majority of courses offered through UCAS. Some art and design courses have a later deadline of 24 March. Almost all main scheme applications have been received by the 24 March deadline.

Applicant totals are those at the third Monday of the month for each cycle (the 'interim comparison point').

The date of the interim comparison point varies from cycle to cycle. For the April interim comparison point the dates for the 2012 to 2016 cycles are 16/04/2012, 15/04/2013, 21/04/2014, 20/04/2015 and 18/04/2016 respectively.

This statistical release covers all applicants excluding RPAs (records of prior acceptance).

Counts of the number of applicants reported have been rounded to the nearest 10, this may result in instances where totals do not equal the sum of the components. Proportional changes are calculated from unrounded data and are presented rounded (to nearest 1 per cent).

### Applicant

A person who has made an application in the UCAS system during the cycle reported (including applications for deferred entry). Records of prior acceptance (RPAs) are excluded.

### Domicile

Declared area of permanent residence. The Channel Islands and the Isle of Man have been assigned as 'Not EU'.