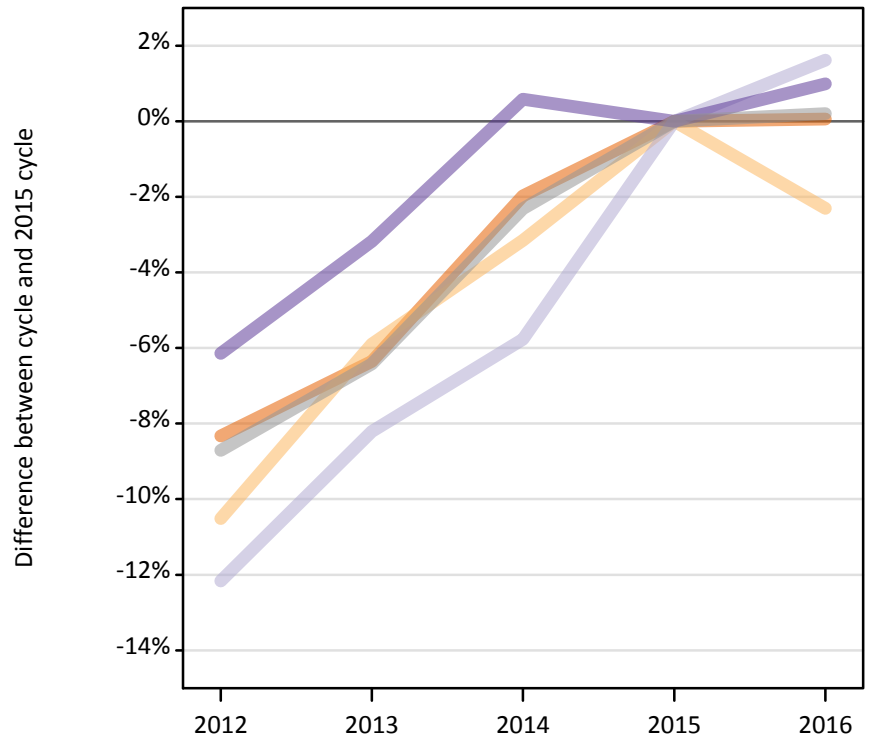
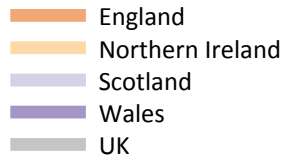


## Applications by country and type of provider at the 24 March deadline

### F.5.1 Applications by domicile and country of provider : All domiciles

Difference between cycle and 2015 cycle



### F.5.2 Applications by domicile and country of provider : All domiciles

Domicile of applicant and country of provider		2012	2013	2014	2015	2016
All domiciles	England	2,090,500	2,135,400	2,235,340	2,280,350	2,281,690
	Northern Ireland	57,350	60,310	62,070	64,090	62,610
	Scotland	257,300	268,890	276,030	292,930	297,670
	Wales	96,460	99,500	103,370	102,770	103,790
	UK	2,501,610	2,564,110	2,676,810	2,740,140	2,745,760

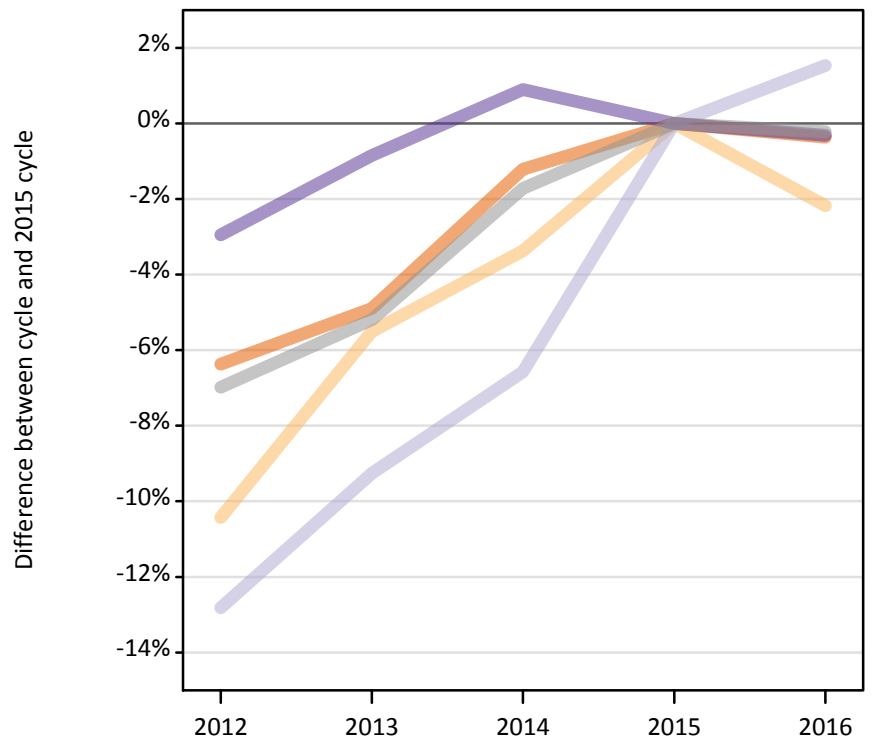
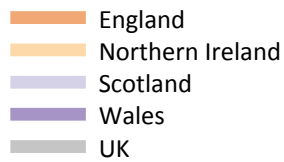
### F.5.3 Applications by domicile and country of provider : All domiciles

Difference between cycle and 2015 cycle

Domicile of applicant and country of provider		2012	2013	2014	2015	2016
All domiciles	England	-8%	-6%	-2%	0%	0%
	Northern Ireland	-11%	-6%	-3%	0%	-2%
	Scotland	-12%	-8%	-6%	0%	2%
	Wales	-6%	-3%	1%	0%	1%
	UK	-9%	-6%	-2%	0%	0%

#### F.5.4 Applications by domicile and country of provider : UK

Difference between cycle and 2015 cycle



#### F.5.5 Applications by domicile and country of provider : UK

Domicile of applicant and country of provider		2012	2013	2014	2015	2016
UK	England	1,776,420	1,804,270	1,874,210	1,897,230	1,890,260
	Northern Ireland	53,130	56,050	57,310	59,310	58,020
	Scotland	197,960	206,030	212,130	227,050	230,540
	Wales	87,020	88,900	90,470	89,660	89,380
	UK	2,114,520	2,155,250	2,234,120	2,273,260	2,268,200

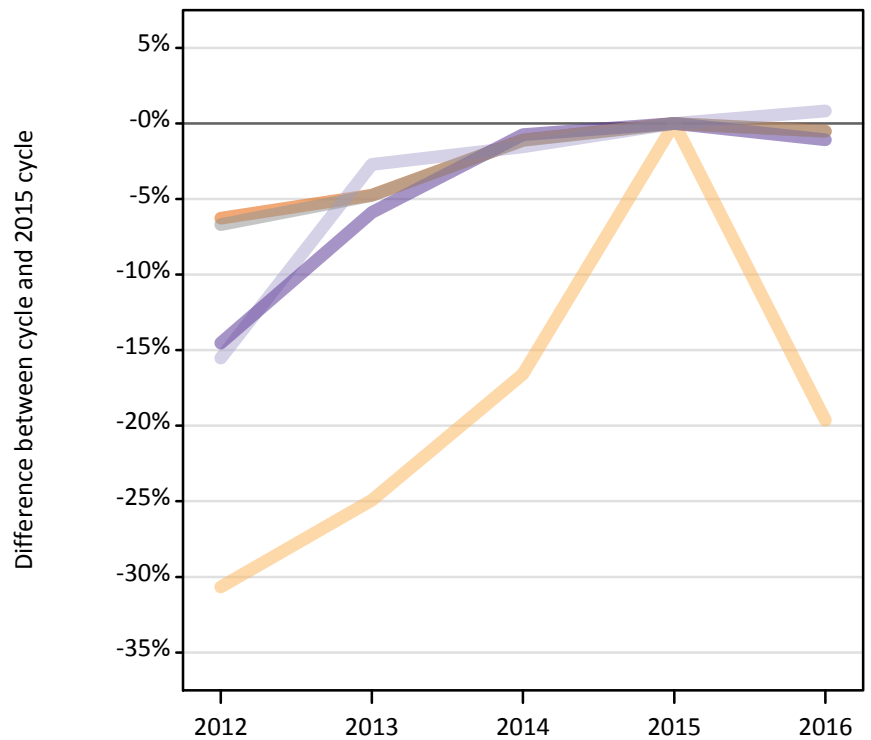
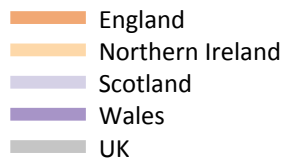
#### F.5.6 Applications by domicile and country of provider : UK

Difference between cycle and 2015 cycle

Domicile of applicant and country of provider		2012	2013	2014	2015	2016
UK	England	-6%	-5%	-1%	0%	-0%
	Northern Ireland	-10%	-6%	-3%	0%	-2%
	Scotland	-13%	-9%	-7%	0%	2%
	Wales	-3%	-1%	1%	0%	-0%
	UK	-7%	-5%	-2%	0%	-0%

### F.5.7 Applications by domicile and country of provider : England

Difference between cycle and 2015 cycle



### F.5.8 Applications by domicile and country of provider : England

Domicile of applicant and country of provider		2012	2013	2014	2015	2016
England	England	1,694,450	1,721,870	1,787,730	1,807,580	1,798,530
	Northern Ireland	2,220	2,400	2,670	3,200	2,570
	Scotland	30,990	35,700	36,130	36,690	36,990
	Wales	43,340	47,720	50,320	50,700	50,150
	UK	1,771,000	1,807,680	1,876,840	1,898,170	1,888,250

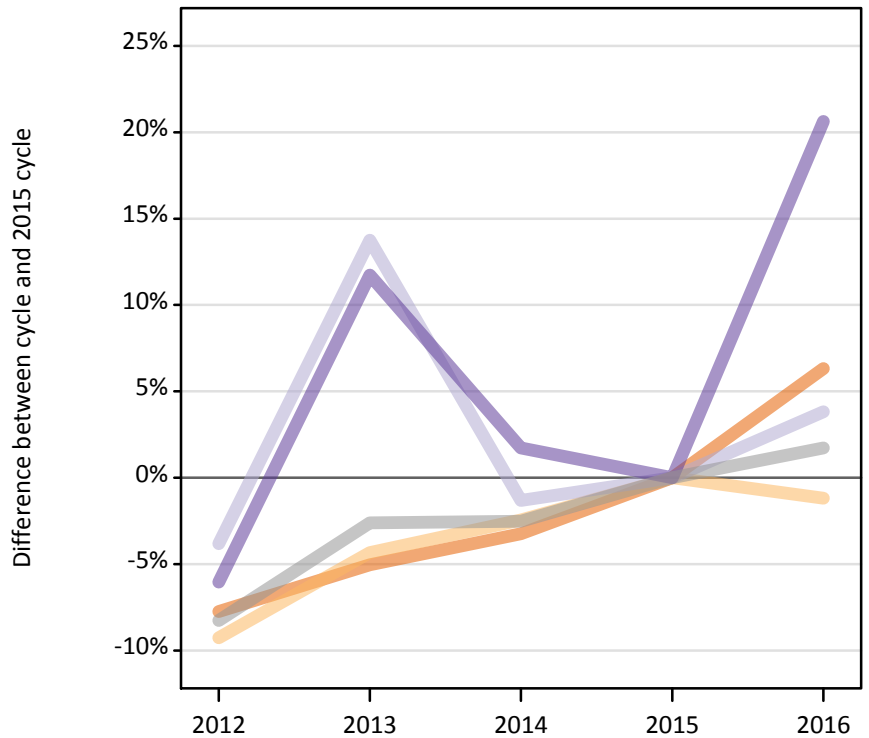
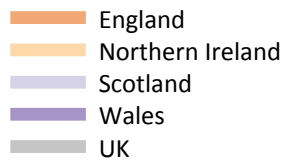
### F.5.9 Applications by domicile and country of provider : England

Difference between cycle and 2015 cycle

Domicile of applicant and country of provider		2012	2013	2014	2015	2016
England	England	-6%	-5%	-1%	0%	-1%
	Northern Ireland	-31%	-25%	-17%	0%	-20%
	Scotland	-16%	-3%	-2%	0%	1%
	Wales	-15%	-6%	-1%	0%	-1%
	UK	-7%	-5%	-1%	0%	-1%

### F.5.10 Applications by domicile and country of provider : Northern Ireland

Difference between cycle and 2015 cycle



### F.5.11 Applications by domicile and country of provider : Northern Ireland

Domicile of applicant and country of provider		2012	2013	2014	2015	2016
Northern Ireland	England	24,540	25,260	25,730	26,590	28,270
	Northern Ireland	50,620	53,370	54,420	55,780	55,120
	Scotland	8,470	10,010	8,690	8,800	9,140
	Wales	1,090	1,300	1,180	1,160	1,400
	UK	84,710	89,930	90,010	92,340	93,930

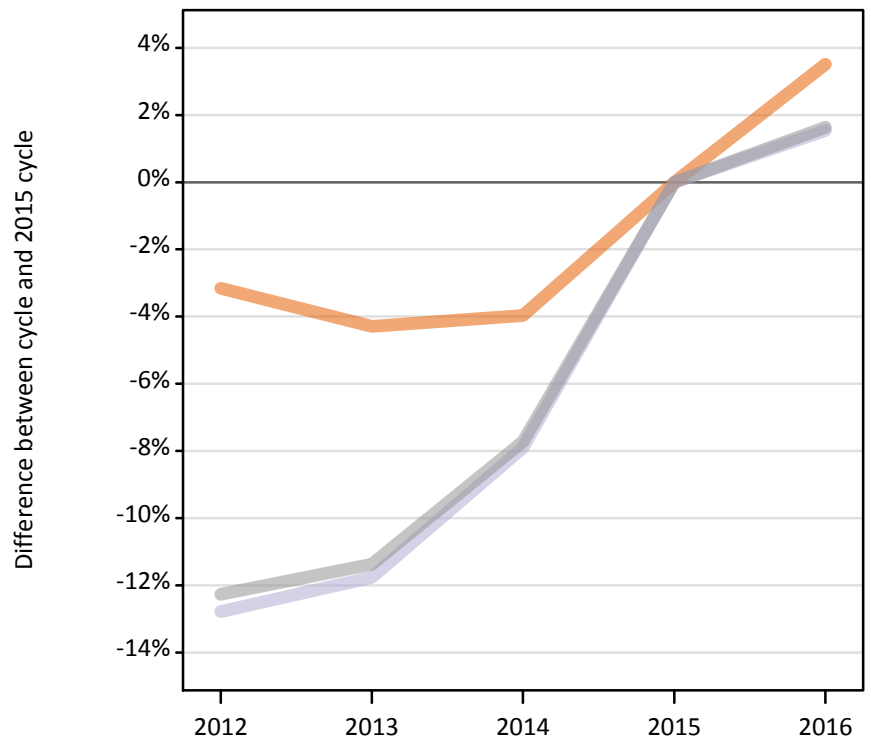
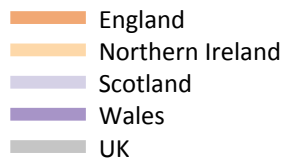
### F.5.12 Applications by domicile and country of provider : Northern Ireland

Difference between cycle and 2015 cycle

Domicile of applicant and country of provider		2012	2013	2014	2015	2016
Northern Ireland	England	-8%	-5%	-3%	0%	6%
	Northern Ireland	-9%	-4%	-2%	0%	-1%
	Scotland	-4%	14%	-1%	0%	4%
	Wales	-6%	12%	2%	0%	21%
	UK	-8%	-3%	-3%	0%	2%

### F.5.13 Applications by domicile and country of provider : Scotland

Difference between cycle and 2015 cycle



### F.5.14 Applications by domicile and country of provider : Scotland

Domicile of applicant and country of provider		2012	2013	2014	2015	2016
Scotland	England	9,370	9,260	9,290	9,680	10,020
	Northern Ireland	200	200	140	220	230
	Scotland	157,420	159,260	166,240	180,510	183,290
	Wales	240	220	230	230	220
	UK	167,240	168,940	175,900	190,630	193,750

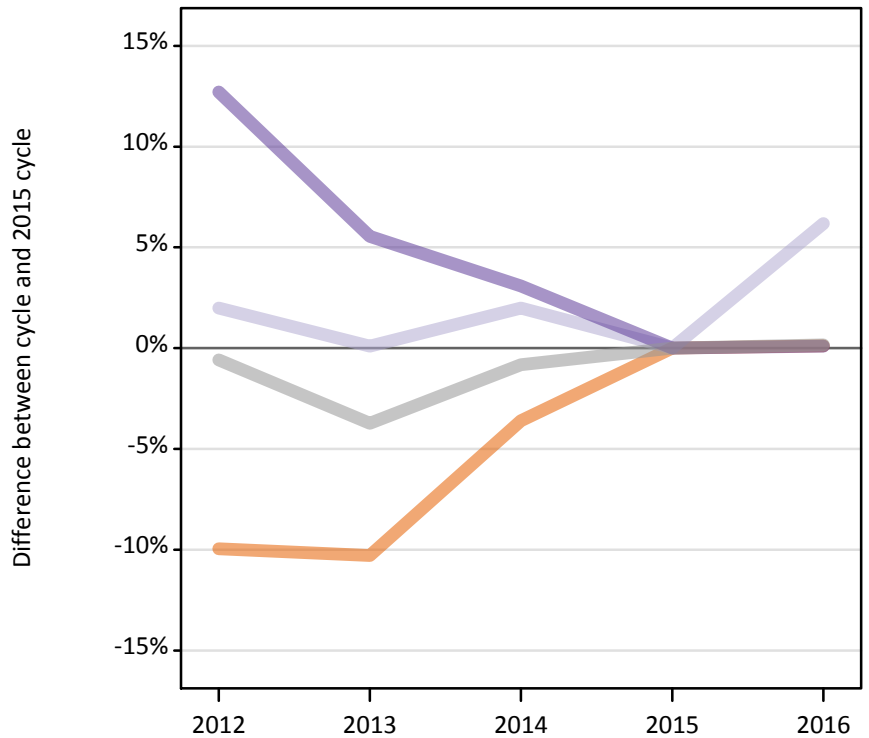
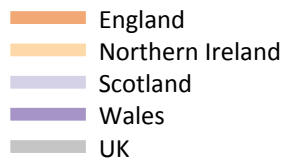
### F.5.15 Applications by domicile and country of provider : Scotland

Difference between cycle and 2015 cycle

Domicile of applicant and country of provider		2012	2013	2014	2015	2016
Scotland	England	-3%	-4%	-4%	0%	4%
	Northern Ireland	-9%	-11%	-36%	0%	2%
	Scotland	-13%	-12%	-8%	0%	2%
	Wales	7%	-2%	2%	0%	-5%
	UK	-12%	-11%	-8%	0%	2%

### F.5.16 Applications by domicile and country of provider : Wales

Difference between cycle and 2015 cycle



### F.5.17 Applications by domicile and country of provider : Wales

Domicile of applicant and country of provider		2012	2013	2014	2015	2016
Wales	England	48,070	47,890	51,460	53,380	53,440
	Northern Ireland	90	90	90	110	100
	Scotland	1,070	1,050	1,070	1,050	1,120
	Wales	42,350	39,660	38,740	37,580	37,610
	UK	91,580	88,690	91,360	92,120	92,270

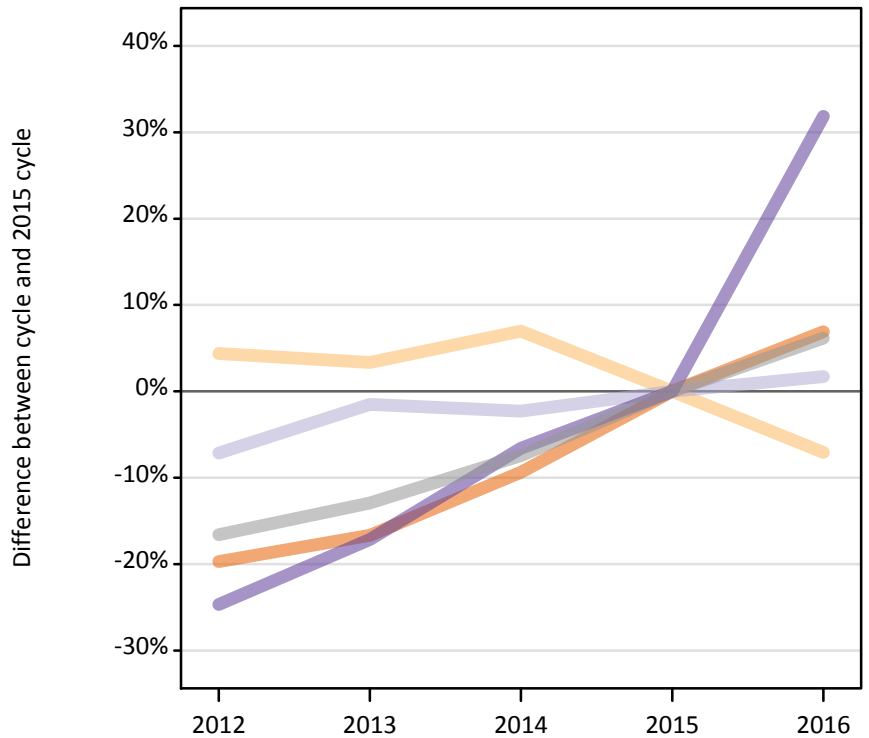
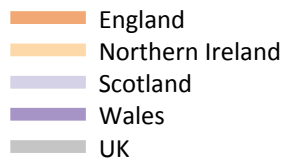
### F.5.18 Applications by domicile and country of provider : Wales

Difference between cycle and 2015 cycle

Domicile of applicant and country of provider		2012	2013	2014	2015	2016
Wales	England	-10%	-10%	-4%	0%	0%
	Northern Ireland	-17%	-22%	-19%	0%	-7%
	Scotland	2%	0%	2%	0%	6%
	Wales	13%	6%	3%	0%	0%
	UK	-1%	-4%	-1%	0%	0%

### F.5.19 Applications by domicile and country of provider : EU (excluding UK)

Difference between cycle and 2015 cycle



### F.5.20 Applications by domicile and country of provider : EU (excluding UK)

Domicile of applicant and country of provider		2012	2013	2014	2015	2016
EU (excluding UK)	England	117,830	122,290	132,980	146,740	156,850
	Northern Ireland	3,450	3,420	3,540	3,310	3,070
	Scotland	42,100	44,660	44,310	45,340	46,110
	Wales	4,100	4,510	5,080	5,440	7,170
	UK	167,480	174,870	185,910	200,830	213,200

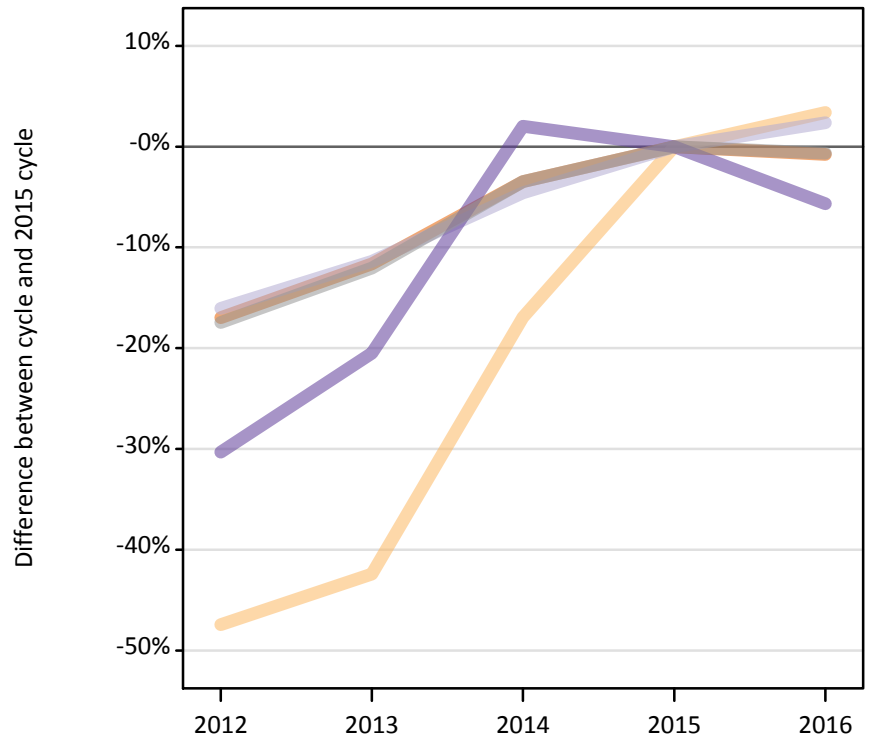
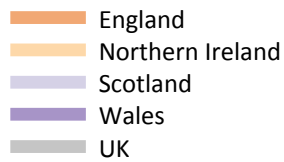
### F.5.21 Applications by domicile and country of provider : EU (excluding UK)

Difference between cycle and 2015 cycle

Domicile of applicant and country of provider		2012	2013	2014	2015	2016
EU (excluding UK)	England	-20%	-17%	-9%	0%	7%
	Northern Ireland	4%	3%	7%	0%	-7%
	Scotland	-7%	-2%	-2%	0%	2%
	Wales	-25%	-17%	-7%	0%	32%
	UK	-17%	-13%	-7%	0%	6%

### F.5.22 Applications by domicile and country of provider : Not EU

Difference between cycle and 2015 cycle



### F.5.23 Applications by domicile and country of provider : Not EU

Domicile of applicant and country of provider		2012	2013	2014	2015	2016
Not EU	England	196,240	208,840	228,150	236,370	234,580
	Northern Ireland	770	850	1,220	1,470	1,520
	Scotland	17,240	18,200	19,600	20,540	21,030
	Wales	5,340	6,100	7,820	7,670	7,240
	UK	219,600	233,980	256,780	266,050	264,360

### F.5.24 Applications by domicile and country of provider : Not EU

Difference between cycle and 2015 cycle

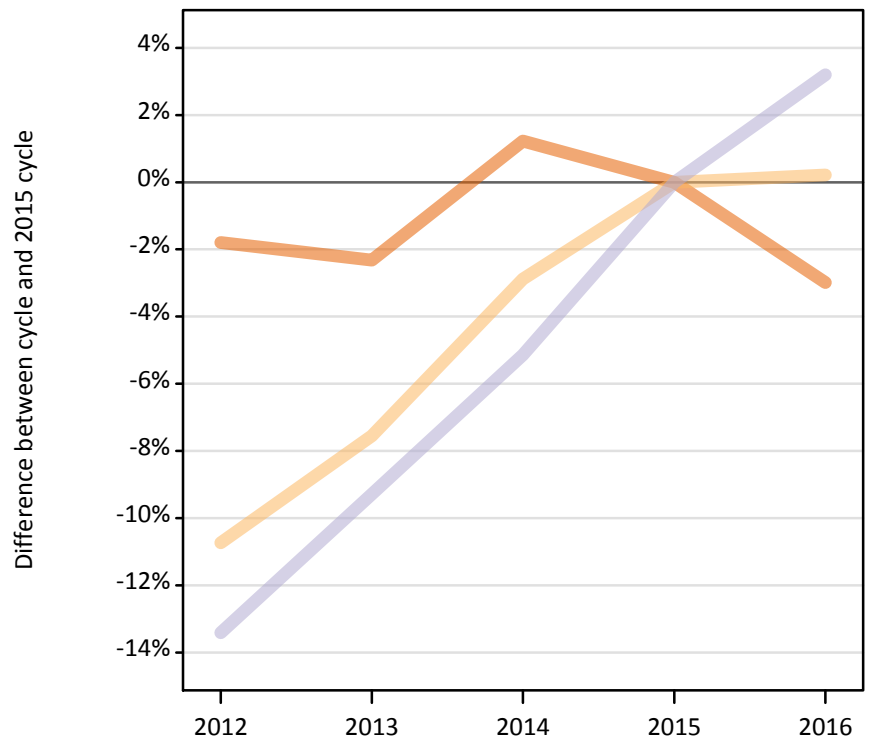
Domicile of applicant and country of provider		2012	2013	2014	2015	2016
Not EU	England	-17%	-12%	-3%	0%	-1%
	Northern Ireland	-47%	-42%	-17%	0%	3%
	Scotland	-16%	-11%	-5%	0%	2%
	Wales	-30%	-20%	2%	0%	-6%
	UK	-17%	-12%	-3%	0%	-1%



### F.5.25 Applications by domicile and tariff group of provider : All domiciles

Difference between cycle and 2015 cycle

- 1. Lower tariff
- 2. Medium tariff
- 3. Higher tariff



### F.5.26 Applications by domicile and tariff group of provider : All domiciles

Domicile of applicant and tariff group of provider		2012	2013	2014	2015	2016
All domiciles	1. Lower tariff	894,900	890,180	922,450	911,290	884,080
	2. Medium tariff	769,380	796,780	837,070	861,860	863,720
	3. Higher tariff	837,330	877,150	917,290	966,980	997,950
	All	2,501,610	2,564,110	2,676,810	2,740,140	2,745,760

### F.5.27 Applications by domicile and tariff group of provider : All domiciles

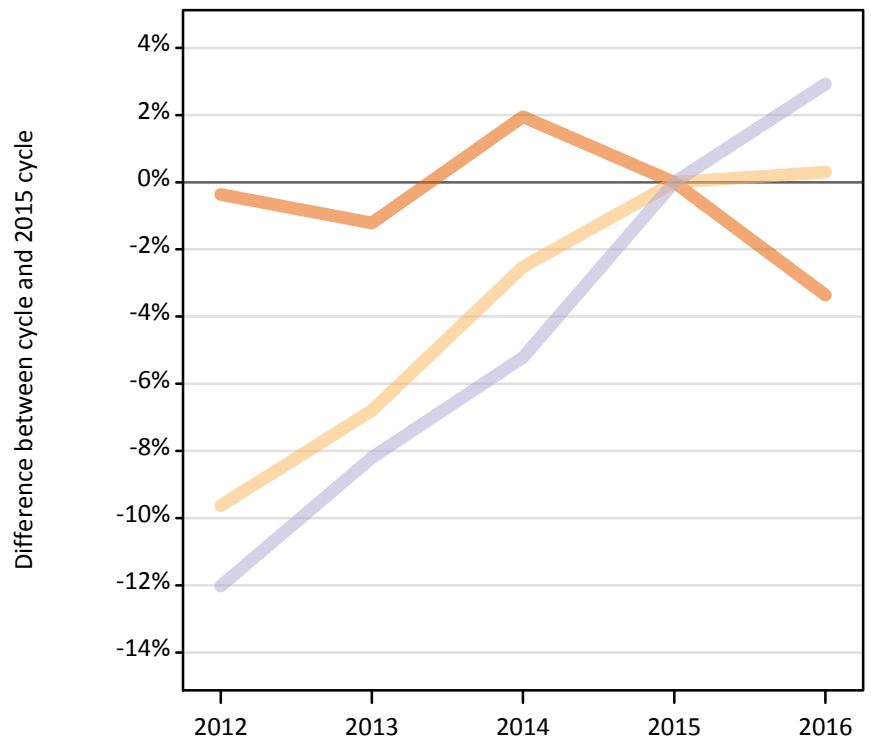
Difference between cycle and 2015 cycle

Domicile of applicant and tariff group of provider		2012	2013	2014	2015	2016
All domiciles	1. Lower tariff	-2%	-2%	1%	0%	-3%
	2. Medium tariff	-11%	-8%	-3%	0%	0%
	3. Higher tariff	-13%	-9%	-5%	0%	3%
	All	-9%	-6%	-2%	0%	0%

### F.5.28 Applications by domicile and tariff group of provider : UK

Difference between cycle and 2015 cycle

- 1. Lower tariff
- 2. Medium tariff
- 3. Higher tariff



### F.5.29 Applications by domicile and tariff group of provider : UK

Domicile of applicant and tariff group of provider		2012	2013	2014	2015	2016
UK	1. Lower tariff	828,170	821,100	847,370	831,180	803,280
	2. Medium tariff	666,170	687,060	718,580	737,160	739,420
	3. Higher tariff	620,180	647,090	668,160	704,920	725,500
	All	2,114,520	2,155,250	2,234,120	2,273,260	2,268,200

### F.5.30 Applications by domicile and tariff group of provider : UK

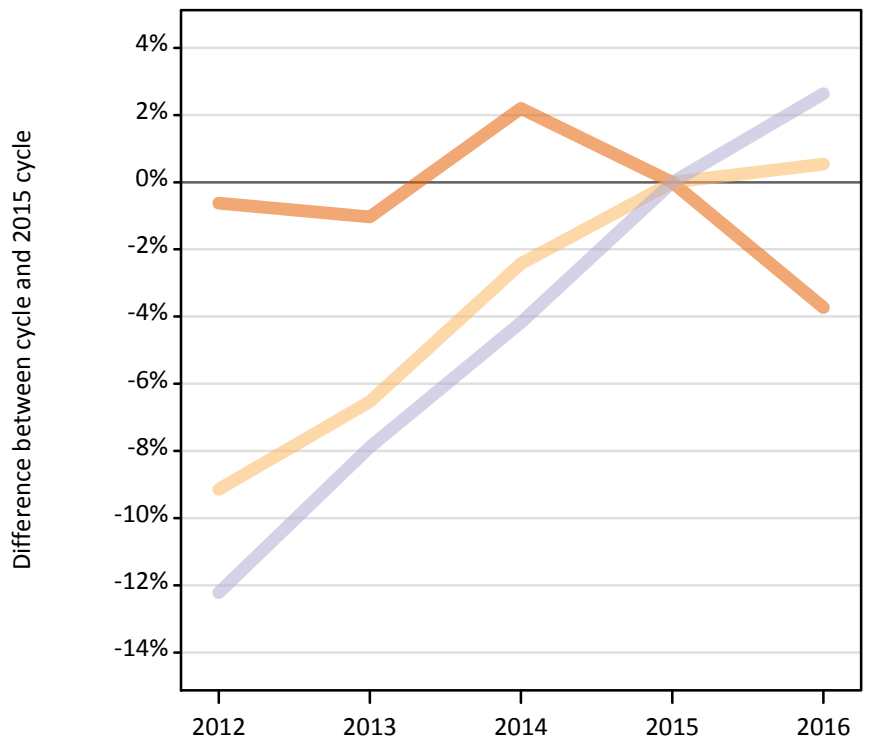
Difference between cycle and 2015 cycle

Domicile of applicant and tariff group of provider		2012	2013	2014	2015	2016
UK	1. Lower tariff	-0%	-1%	2%	0%	-3%
	2. Medium tariff	-10%	-7%	-3%	0%	0%
	3. Higher tariff	-12%	-8%	-5%	0%	3%
	All	-7%	-5%	-2%	0%	-0%

### F.5.31 Applications by domicile and tariff group of provider : England

Difference between cycle and 2015 cycle

- 1. Lower tariff
- 2. Medium tariff
- 3. Higher tariff



### F.5.32 Applications by domicile and tariff group of provider : England

Domicile of applicant and tariff group of provider		2012	2013	2014	2015	2016
England	1. Lower tariff	743,940	740,890	765,050	748,630	720,680
	2. Medium tariff	531,640	546,910	570,950	585,130	588,280
	3. Higher tariff	495,420	519,890	540,840	564,410	579,290
	All	1,771,000	1,807,680	1,876,840	1,898,170	1,888,250

### F.5.33 Applications by domicile and tariff group of provider : England

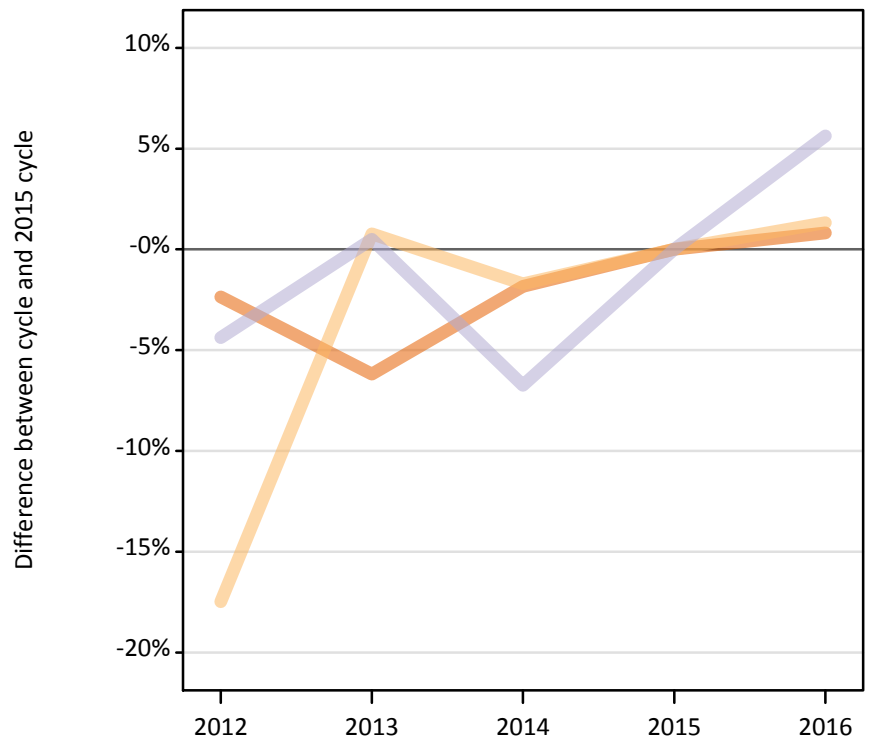
Difference between cycle and 2015 cycle

Domicile of applicant and tariff group of provider		2012	2013	2014	2015	2016
England	1. Lower tariff	-1%	-1%	2%	0%	-4%
	2. Medium tariff	-9%	-7%	-2%	0%	1%
	3. Higher tariff	-12%	-8%	-4%	0%	3%
	All	-7%	-5%	-1%	0%	-1%

### F.5.34 Applications by domicile and tariff group of provider : Northern Ireland

Difference between cycle and 2015 cycle

- 1. Lower tariff
- 2. Medium tariff
- 3. Higher tariff



### F.5.35 Applications by domicile and tariff group of provider : Northern Ireland

Domicile of applicant and tariff group of provider		2012	2013	2014	2015	2016
Northern Ireland	1. Lower tariff	43,270	41,570	43,500	44,310	44,670
	2. Medium tariff	28,240	34,490	33,650	34,230	34,690
	3. Higher tariff	13,200	13,870	12,870	13,800	14,580
	All	84,710	89,930	90,010	92,340	93,930

### F.5.36 Applications by domicile and tariff group of provider : Northern Ireland

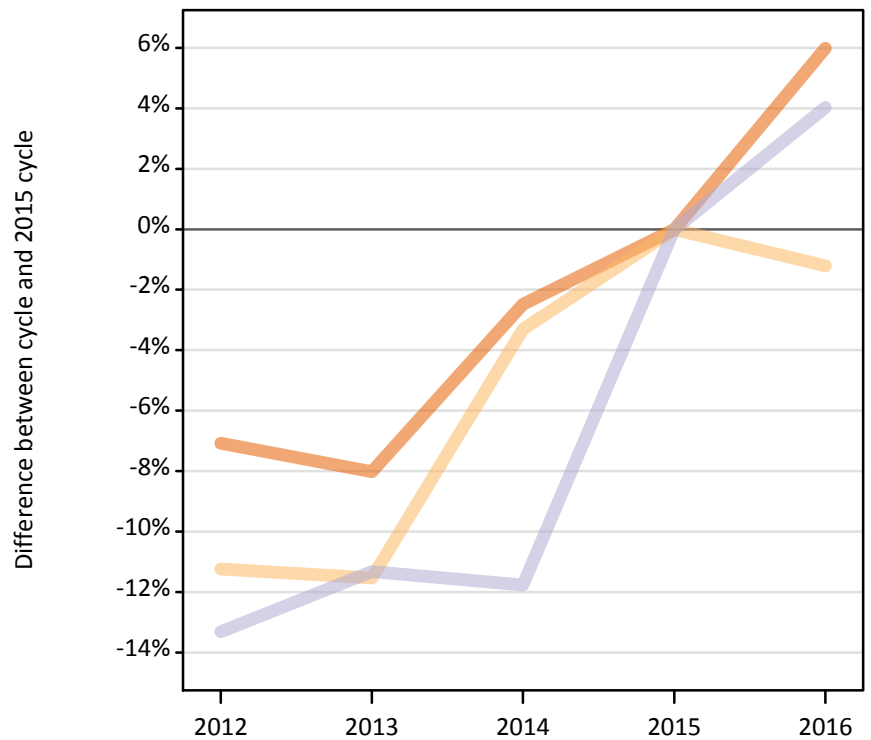
Difference between cycle and 2015 cycle

Domicile of applicant and tariff group of provider		2012	2013	2014	2015	2016
Northern Ireland	1. Lower tariff	-2%	-6%	-2%	0%	1%
	2. Medium tariff	-17%	1%	-2%	0%	1%
	3. Higher tariff	-4%	1%	-7%	0%	6%
	All	-8%	-3%	-3%	0%	2%

### F.5.37 Applications by domicile and tariff group of provider : Scotland

Difference between cycle and 2015 cycle

- 1. Lower tariff
- 2. Medium tariff
- 3. Higher tariff



### F.5.38 Applications by domicile and tariff group of provider : Scotland

Domicile of applicant and tariff group of provider		2012	2013	2014	2015	2016
Scotland	1. Lower tariff	2,470	2,440	2,590	2,660	2,810
	2. Medium tariff	78,190	77,930	85,180	88,100	87,030
	3. Higher tariff	86,580	88,570	88,130	99,880	103,900
	All	167,240	168,940	175,900	190,630	193,750

### F.5.39 Applications by domicile and tariff group of provider : Scotland

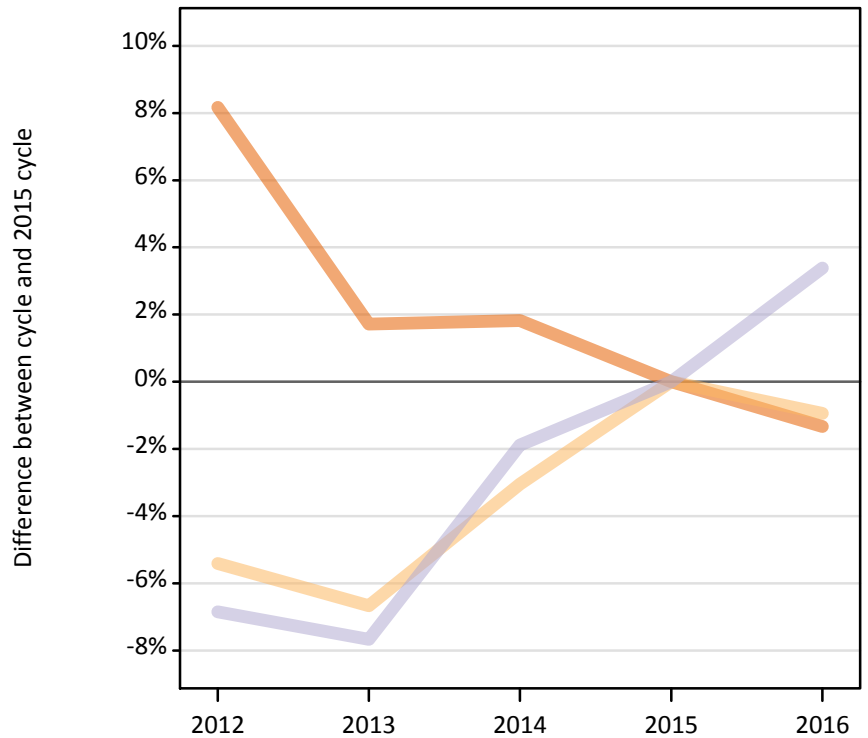
Difference between cycle and 2015 cycle

Domicile of applicant and tariff group of provider		2012	2013	2014	2015	2016
Scotland	1. Lower tariff	-7%	-8%	-2%	0%	6%
	2. Medium tariff	-11%	-12%	-3%	0%	-1%
	3. Higher tariff	-13%	-11%	-12%	0%	4%
	All	-12%	-11%	-8%	0%	2%

### F.5.40 Applications by domicile and tariff group of provider : Wales

Difference between cycle and 2015 cycle

- 1. Lower tariff
- 2. Medium tariff
- 3. Higher tariff



### F.5.41 Applications by domicile and tariff group of provider : Wales

Domicile of applicant and tariff group of provider		2012	2013	2014	2015	2016
Wales	1. Lower tariff	38,500	36,200	36,240	35,590	35,110
	2. Medium tariff	28,100	27,720	28,800	29,710	29,420
	3. Higher tariff	24,990	24,770	26,320	26,830	27,740
	All	91,580	88,690	91,360	92,120	92,270

### F.5.42 Applications by domicile and tariff group of provider : Wales

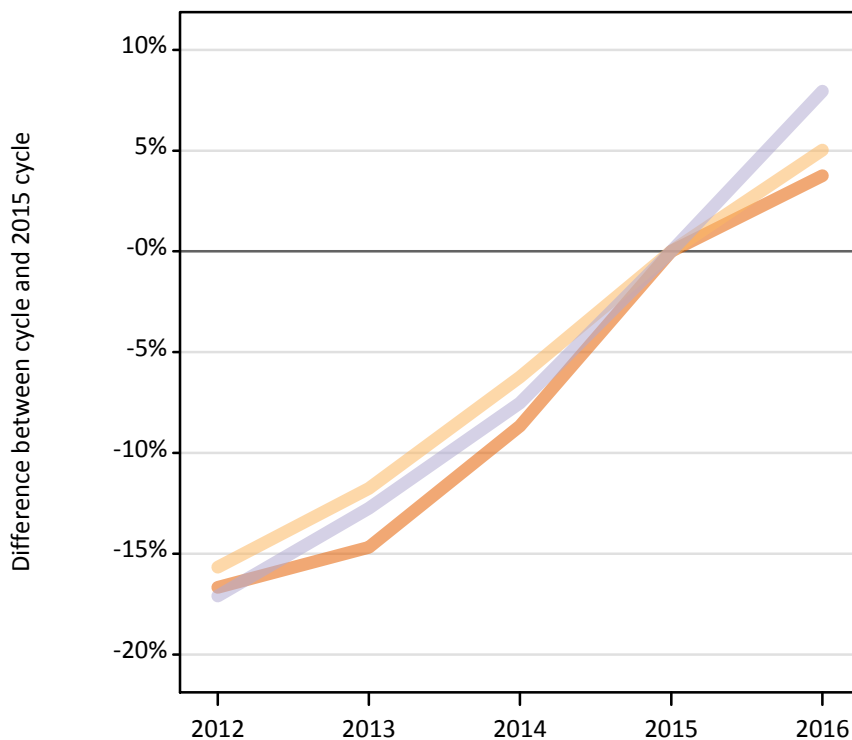
Difference between cycle and 2015 cycle

Domicile of applicant and tariff group of provider		2012	2013	2014	2015	2016
Wales	1. Lower tariff	8%	2%	2%	0%	-1%
	2. Medium tariff	-5%	-7%	-3%	0%	-1%
	3. Higher tariff	-7%	-8%	-2%	0%	3%
	All	-1%	-4%	-1%	0%	0%

### F.5.43 Applications by domicile and tariff group of provider : EU (excluding UK)

Difference between cycle and 2015 cycle

- 1. Lower tariff
- 2. Medium tariff
- 3. Higher tariff



### F.5.44 Applications by domicile and tariff group of provider : EU (excluding UK)

Domicile of applicant and tariff group of provider		2012	2013	2014	2015	2016
EU (excluding UK)	1. Lower tariff	38,990	39,920	42,730	46,780	48,540
	2. Medium tariff	46,860	49,030	52,100	55,560	58,360
	3. Higher tariff	81,630	85,930	91,080	98,480	106,310
	All	167,480	174,870	185,910	200,830	213,200

### F.5.45 Applications by domicile and tariff group of provider : EU (excluding UK)

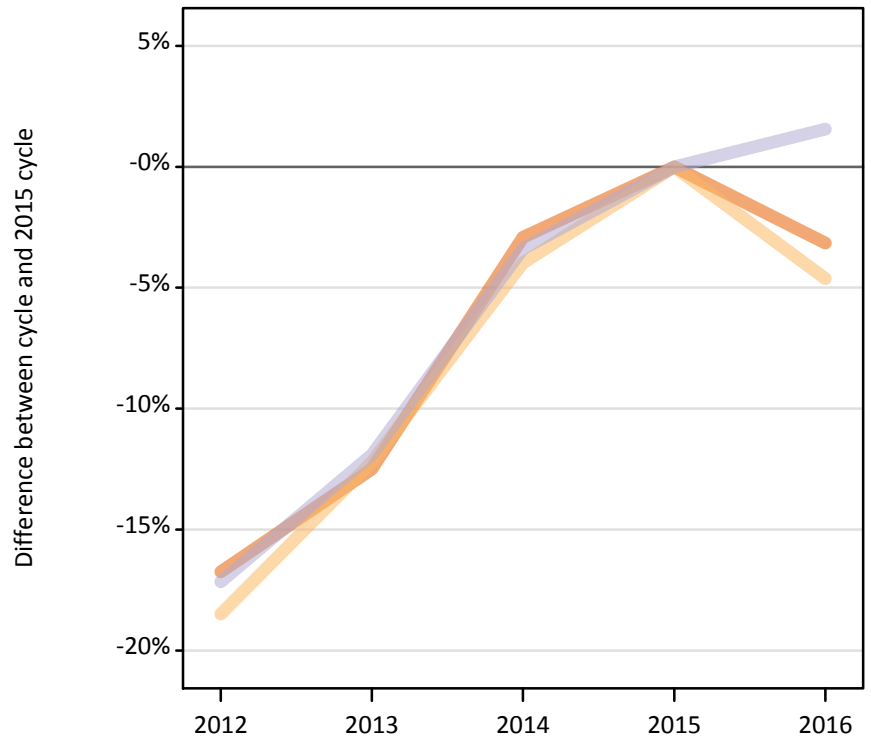
Difference between cycle and 2015 cycle

Domicile of applicant and tariff group of provider		2012	2013	2014	2015	2016
EU (excluding UK)	1. Lower tariff	-17%	-15%	-9%	0%	4%
	2. Medium tariff	-16%	-12%	-6%	0%	5%
	3. Higher tariff	-17%	-13%	-8%	0%	8%
	All	-17%	-13%	-7%	0%	6%

### F.5.46 Applications by domicile and tariff group of provider : Not EU

Difference between cycle and 2015 cycle

- 1. Lower tariff
- 2. Medium tariff
- 3. Higher tariff



### F.5.47 Applications by domicile and tariff group of provider : Not EU

Domicile of applicant and tariff group of provider		2012	2013	2014	2015	2016
Not EU	1. Lower tariff	27,740	29,160	32,350	33,320	32,270
	2. Medium tariff	56,350	60,700	66,390	69,140	65,950
	3. Higher tariff	135,510	144,130	158,050	163,590	166,140
	All	219,600	233,980	256,780	266,050	264,360

### F.5.48 Applications by domicile and tariff group of provider : Not EU

Difference between cycle and 2015 cycle

Domicile of applicant and tariff group of provider		2012	2013	2014	2015	2016
Not EU	1. Lower tariff	-17%	-12%	-3%	0%	-3%
	2. Medium tariff	-18%	-12%	-4%	0%	-5%
	3. Higher tariff	-17%	-12%	-3%	0%	2%
	All	-17%	-12%	-3%	0%	-1%



## F.5.49 Technical notes and definitions

Applicants have been able to submit applications for all 2016 courses since early September.

People who submit their applications to UCAS by the January deadline are considered 'on time' applicants for the large majority of courses offered through UCAS. Some art and design courses have a later deadline of 24 March. Almost all main scheme applications have been received by the 24 March deadline.

Counts of the number of applicants reported have been rounded to the nearest 10 applicants, this may result in instances where totals do not equal the sum of the components. Proportional changes have been rounded to the nearest whole percentage point.

### Age

This statistical release uses country-specific age definitions which align with the cut off points for school/college cohorts within the different administrations of the UK. For England and Wales ages are defined on the 31 August, for Northern Ireland on the 1 July and for Scotland on the 28 February the following year. Defining ages in this way matches the assignment of children to school cohorts. For applicants outside of the UK the cohort cut off for England and Wales has been used.

### Applicant

A person who has made an application in the UCAS system during the cycle reported (including applications for deferred entry). Records of prior acceptance (RPAs) are excluded.

### Application

An application to a course at a provider made by an applicant in the UCAS main scheme. Applicants may make up to five main scheme applications.

### Country of provider

An applicant may be counted once for each provider country they have applied to in the main scheme. If an applicant has applied to providers in multiple countries then the applicant is counted once within each country of provider applied to.

This statistical release excludes a small number of applications to a provider based in the EU.

### Domicile

Declared area of permanent residence. The Channel Islands and the Isle of Man have been assigned as 'Not EU'.

### First time applicant

An applicant that did not apply to the UCAS scheme in the previous cycle.

### Main scheme

The main UCAS application scheme through which up to five providers/courses can be applied to. This opens in September and closes to new applications on 30 June the following year.

### Reapplicant

An applicant that applied to the UCAS scheme in the previous cycle.

### Subject group

The JACS3 classification used to classify courses into subject groups.

The values reported against subject groups in the 2015 cycle have been restated from those which appeared in the equivalent report in 2015.

### Tariff group of provider

Providers are grouped as higher, medium or lower tariff based on their average levels of attainment of their accepted applicants (summarised through UCAS Tariff points) in recent cycles. Each group of providers accounted for around a third of all UK 18 year old acceptances in recent cycles.