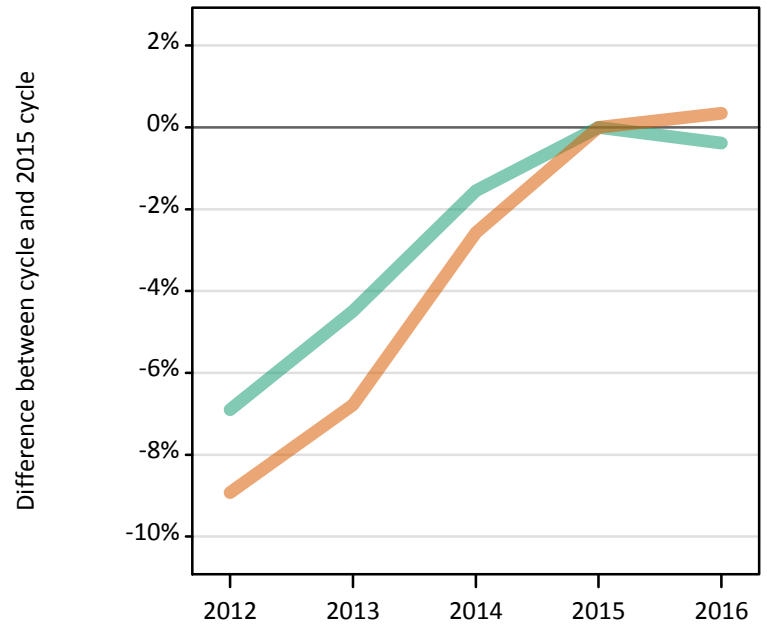


Applicants by sex and age at the 24 March deadline

F.2.1 Applicants by sex : All domiciles

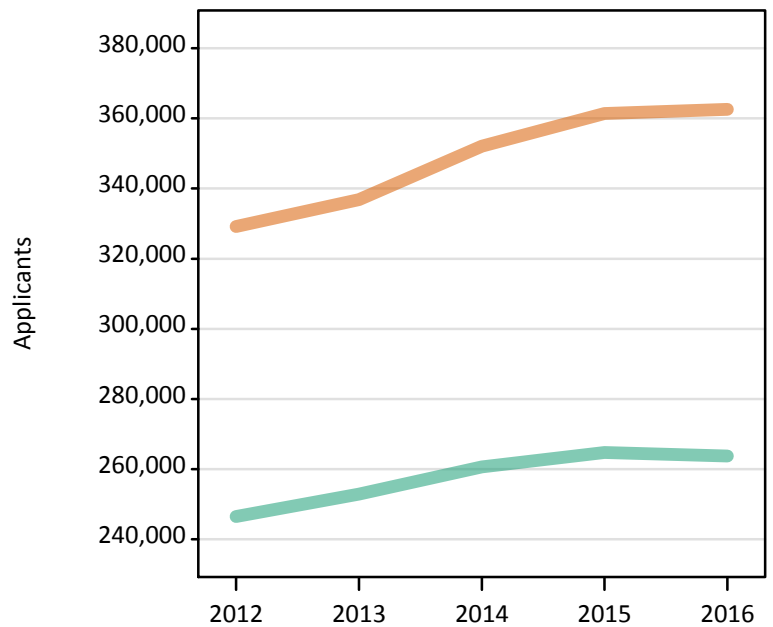
Difference between cycle and 2015 cycle

Men
Women



F.2.2 Applicants by sex : All domiciles

Men
Women



F.2.3 Applicants by age and sex : All domiciles

Age group and sex of applicant		2012	2013	2014	2015	2016
Under 18	Women	4,870	5,120	5,850	6,000	6,320
	Men	3,640	3,960	4,290	4,600	4,720
18	Women	159,800	162,050	167,340	176,690	178,860
	Men	125,100	127,160	131,380	135,260	136,630
19	Women	60,200	65,510	68,360	69,310	70,080
	Men	50,220	54,870	55,980	57,010	57,040
20-24	Women	60,130	61,100	64,810	63,560	61,050
	Men	46,930	47,120	48,450	47,310	45,260
25-29	Women	17,850	17,980	18,940	19,370	19,130
	Men	9,390	9,410	9,600	9,570	9,190
30-34	Women	10,440	10,230	10,580	10,430	10,330
	Men	4,650	4,350	4,440	4,300	4,150
35 and over	Women	15,860	14,880	16,220	16,050	16,860
	Men	6,550	6,000	6,520	6,700	6,730
All ages	Women	329,140	336,870	352,100	361,400	362,630
	Men	246,480	252,870	260,650	264,760	263,730

F.2.4 Applicants by age and sex : All domiciles

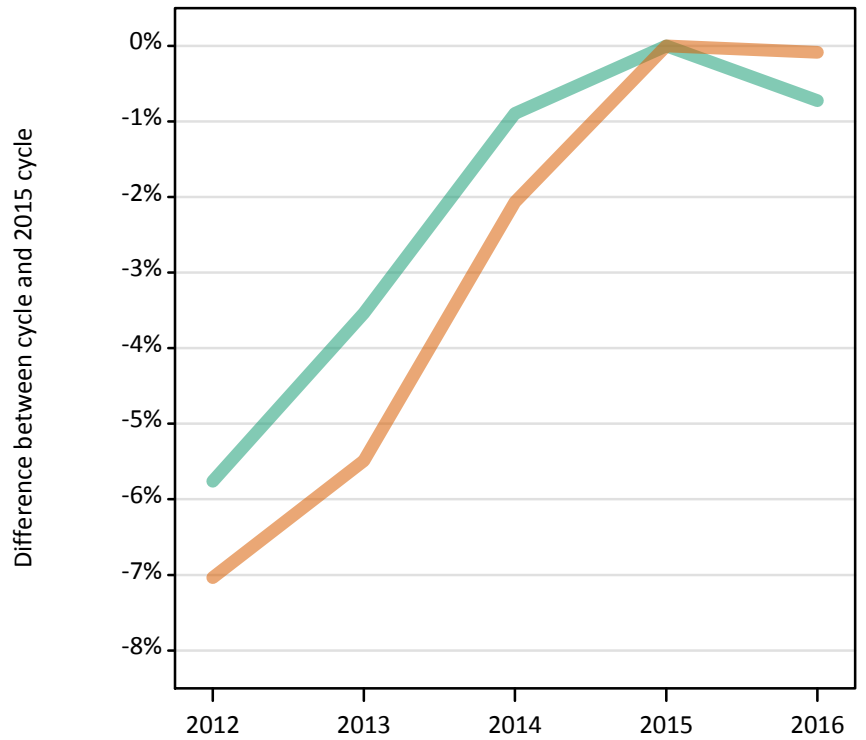
Difference between cycle and 2015 cycle

Age group and sex of applicant		2012	2013	2014	2015	2016
Under 18	Women	-19%	-15%	-2%	0%	5%
	Men	-21%	-14%	-7%	0%	3%
18	Women	-10%	-8%	-5%	0%	1%
	Men	-8%	-6%	-3%	0%	1%
19	Women	-13%	-5%	-1%	0%	1%
	Men	-12%	-4%	-2%	0%	0%
20-24	Women	-5%	-4%	2%	0%	-4%
	Men	-1%	-0%	2%	0%	-4%
25-29	Women	-8%	-7%	-2%	0%	-1%
	Men	-2%	-2%	0%	0%	-4%
30-34	Women	0%	-2%	1%	0%	-1%
	Men	8%	1%	3%	0%	-3%
35 and over	Women	-1%	-7%	1%	0%	5%
	Men	-2%	-10%	-3%	0%	0%
All ages	Women	-9%	-7%	-3%	0%	0%
	Men	-7%	-4%	-2%	0%	-0%

F.2.5 Applicants by sex : UK

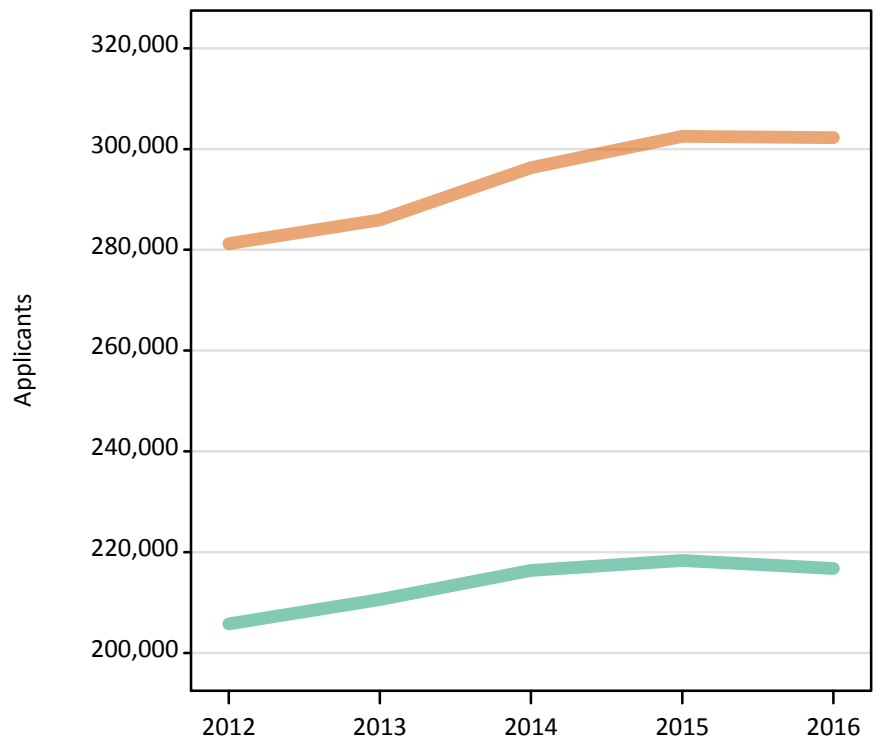
Difference between cycle and 2015 cycle

Men
Women



F.2.6 Applicants by sex : UK

Men
Women



F.2.7 Applicants by age and sex : UK

Age group and sex of applicant		2012	2013	2014	2015	2016
Under 18	Women	1,020	900	940	980	940
	Men	730	680	650	720	790
18	Women	143,230	143,700	147,350	154,800	155,770
	Men	112,060	113,170	116,220	118,600	119,430
19	Women	46,580	51,220	52,640	52,980	53,360
	Men	39,190	43,480	44,170	44,630	44,220
20-24	Women	48,390	49,040	51,710	50,290	48,040
	Men	35,490	35,670	36,800	35,880	34,250
25-29	Women	16,480	16,610	17,540	17,770	17,670
	Men	7,910	8,010	8,290	8,200	7,850
30-34	Women	10,010	9,850	10,200	10,030	9,980
	Men	4,190	3,910	4,020	3,890	3,770
35 and over	Women	15,540	14,610	15,900	15,700	16,530
	Men	6,200	5,680	6,220	6,420	6,450
All ages	Women	281,260	285,940	296,280	302,540	302,280
	Men	205,760	210,610	216,380	218,330	216,750

F.2.8 Applicants by age and sex : UK

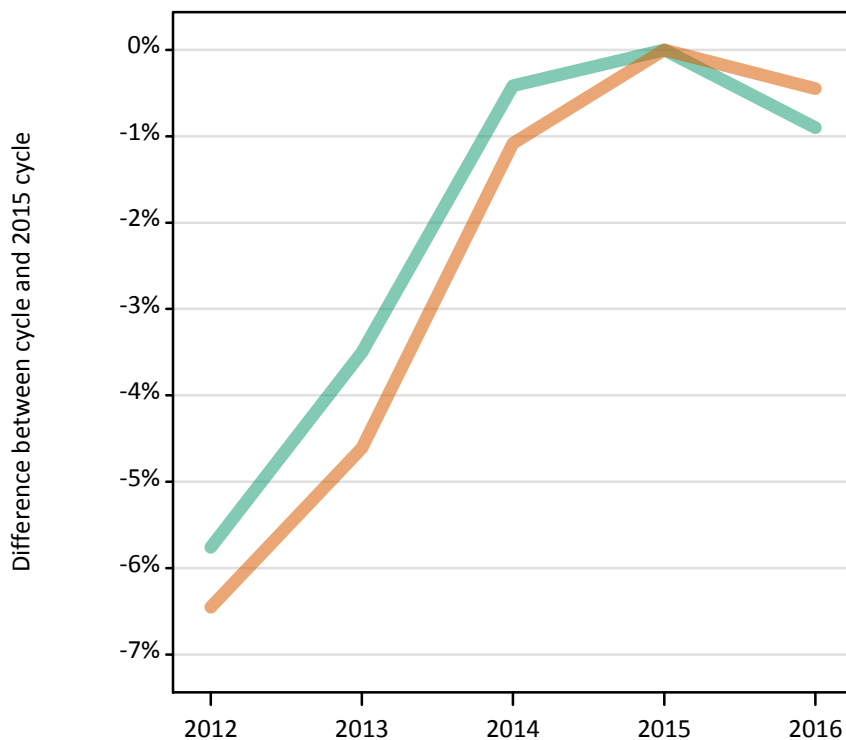
Difference between cycle and 2015 cycle

Age group and sex of applicant		2012	2013	2014	2015	2016
Under 18	Women	4%	-8%	-4%	0%	-4%
	Men	1%	-5%	-9%	0%	10%
18	Women	-7%	-7%	-5%	0%	1%
	Men	-6%	-5%	-2%	0%	1%
19	Women	-12%	-3%	-1%	0%	1%
	Men	-12%	-3%	-1%	0%	-1%
20-24	Women	-4%	-2%	3%	0%	-4%
	Men	-1%	-1%	3%	0%	-5%
25-29	Women	-7%	-7%	-1%	0%	-1%
	Men	-4%	-2%	1%	0%	-4%
30-34	Women	-0%	-2%	2%	0%	-0%
	Men	8%	1%	3%	0%	-3%
35 and over	Women	-1%	-7%	1%	0%	5%
	Men	-3%	-11%	-3%	0%	0%
All ages	Women	-7%	-5%	-2%	0%	-0%
	Men	-6%	-4%	-1%	0%	-1%

F.2.9 Applicants by sex : England

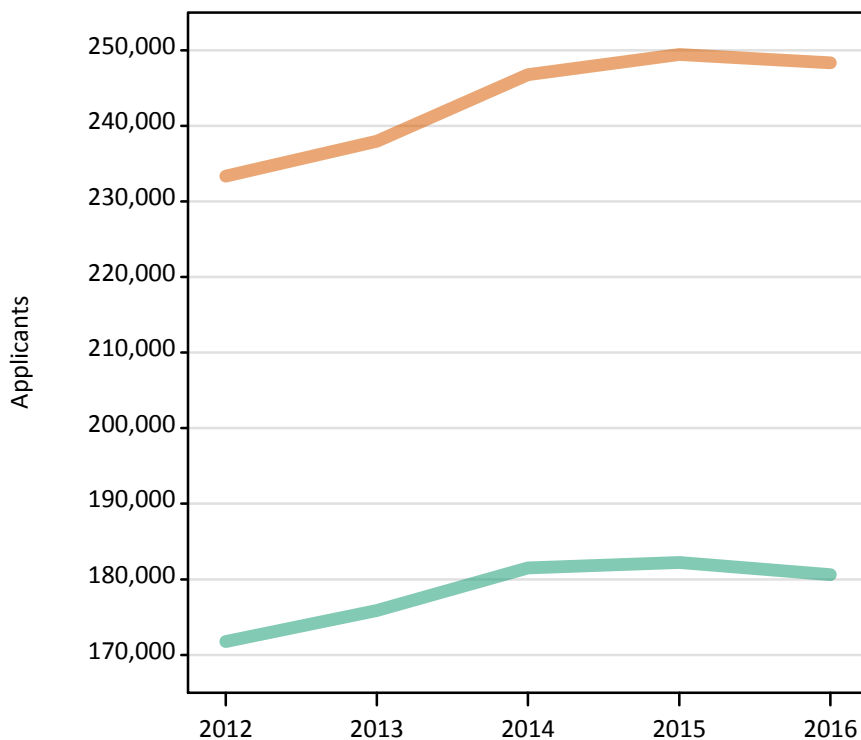
Difference between cycle and 2015 cycle

Men
Women



F.2.10 Applicants by sex : England

Men
Women



F.2.11 Applicants by age and sex : England

Age group and sex of applicant		2012	2013	2014	2015	2016
Under 18	Women	490	460	500	490	460
	Men	390	380	380	450	460
18	Women	118,960	119,910	123,130	129,640	130,650
	Men	94,270	95,270	98,240	100,520	101,690
19	Women	39,650	44,240	45,570	45,860	45,680
	Men	33,920	38,170	38,760	39,100	38,420
20-24	Women	38,990	39,200	41,440	39,110	36,830
	Men	28,370	27,990	29,260	28,020	26,350
25-29	Women	13,480	13,470	14,130	13,580	13,420
	Men	6,190	6,210	6,430	6,010	5,640
30-34	Women	8,470	8,230	8,440	7,910	7,810
	Men	3,350	3,100	3,190	2,950	2,800
35 and over	Women	13,320	12,440	13,560	12,870	13,490
	Men	5,270	4,750	5,230	5,210	5,250
All ages	Women	233,360	237,960	246,760	249,460	248,340
	Men	171,750	175,860	181,490	182,240	180,600

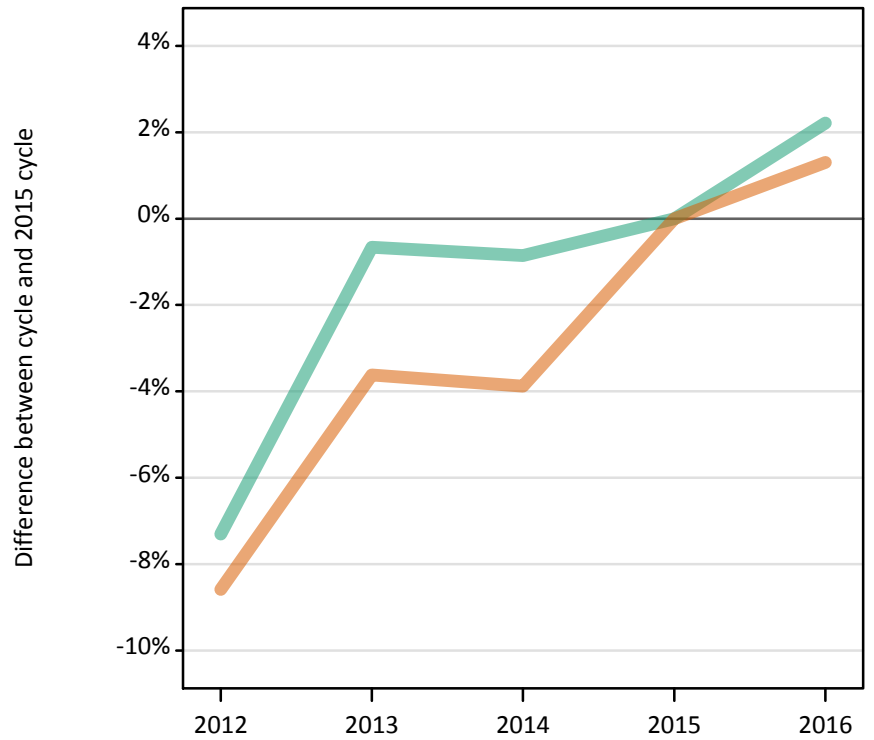
F.2.12 Applicants by age and sex : England

Difference between cycle and 2015 cycle

Age group and sex of applicant		2012	2013	2014	2015	2016
Under 18	Women	1%	-6%	3%	0%	-6%
	Men	-13%	-16%	-15%	0%	3%
18	Women	-8%	-8%	-5%	0%	1%
	Men	-6%	-5%	-2%	0%	1%
19	Women	-14%	-4%	-1%	0%	-0%
	Men	-13%	-2%	-1%	0%	-2%
20-24	Women	-0%	0%	6%	0%	-6%
	Men	1%	-0%	4%	0%	-6%
25-29	Women	-1%	-1%	4%	0%	-1%
	Men	3%	3%	7%	0%	-6%
30-34	Women	7%	4%	7%	0%	-1%
	Men	13%	5%	8%	0%	-5%
35 and over	Women	3%	-3%	5%	0%	5%
	Men	1%	-9%	0%	0%	1%
All ages	Women	-6%	-5%	-1%	0%	-0%
	Men	-6%	-4%	-0%	0%	-1%

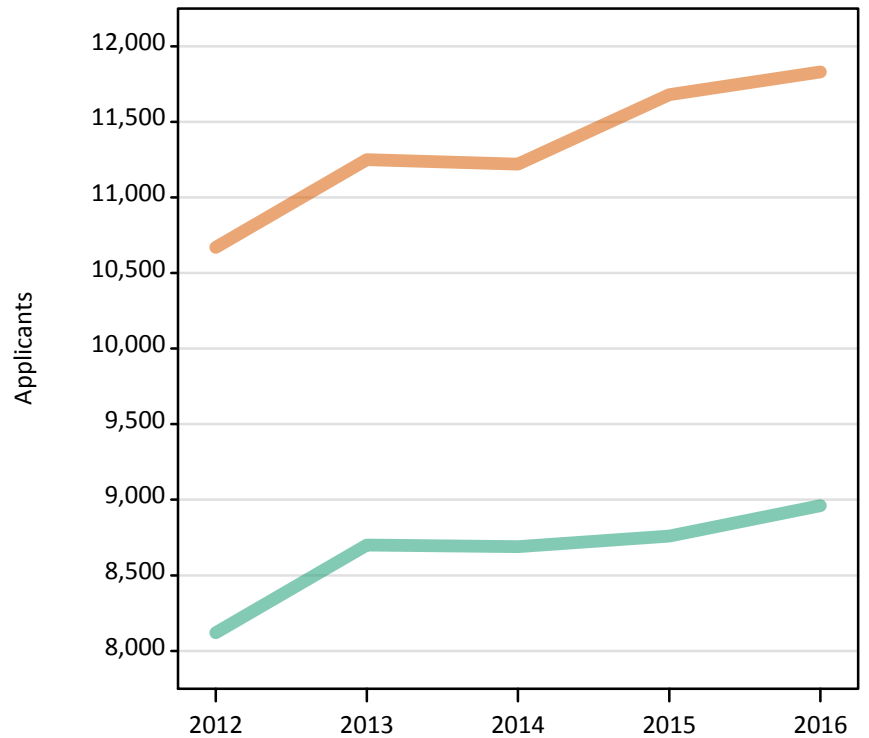
F.2.13 Applicants by sex : Northern Ireland Difference between cycle and 2015 cycle

Men
Women



F.2.14 Applicants by sex : Northern Ireland

Men
Women



F.2.15 Applicants by age and sex : Northern Ireland

Age group and sex of applicant		2012	2013	2014	2015	2016
Under 18	Women	30	20	20	20	30
	Men	20	20	10	10	10
18	Women	6,700	6,530	6,400	6,830	6,700
	Men	4,990	5,160	5,080	5,130	5,080
19	Women	1,480	1,650	1,650	1,660	1,960
	Men	1,190	1,300	1,380	1,420	1,570
20-24	Women	1,660	1,950	2,030	2,030	1,990
	Men	1,460	1,710	1,720	1,660	1,730
25-29	Women	410	550	570	560	550
	Men	250	290	270	290	320
30-34	Women	170	260	260	270	280
	Men	100	110	110	130	120
35 and over	Women	210	300	300	300	320
	Men	110	120	120	120	130
All ages	Women	10,670	11,250	11,220	11,680	11,830
	Men	8,120	8,700	8,690	8,760	8,960

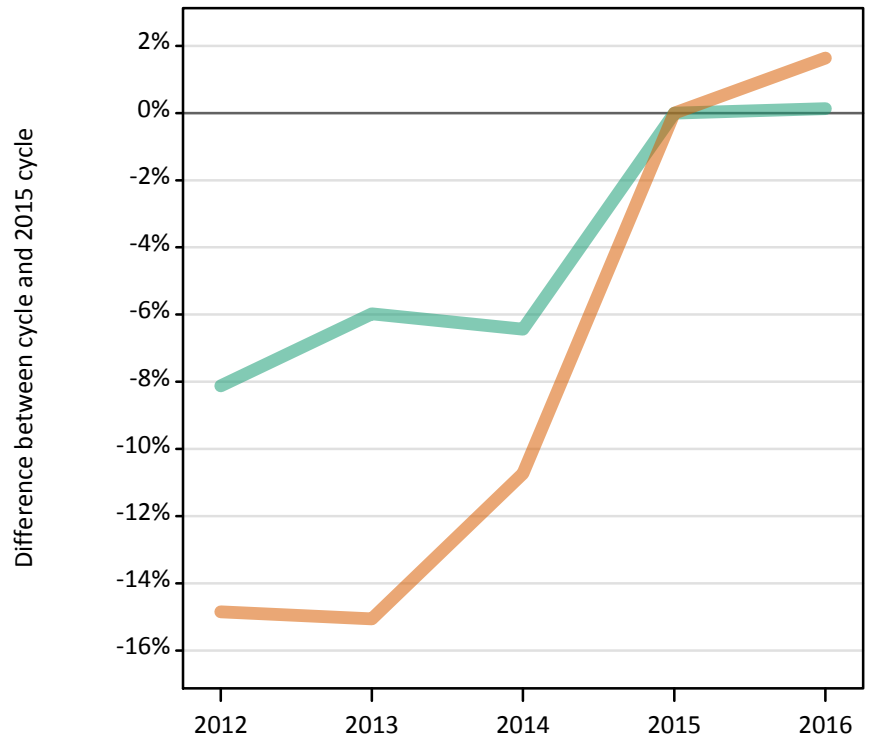
F.2.16 Applicants by age and sex : Northern Ireland

Difference between cycle and 2015 cycle

Age group and sex of applicant		2012	2013	2014	2015	2016
Under 18	Women	55%	-18%	-23%	0%	18%
	Men	42%	42%	-8%	0%	17%
18	Women	-2%	-4%	-6%	0%	-2%
	Men	-3%	1%	-1%	0%	-1%
19	Women	-11%	-1%	-1%	0%	18%
	Men	-16%	-9%	-3%	0%	10%
20-24	Women	-18%	-4%	-0%	0%	-2%
	Men	-12%	3%	4%	0%	4%
25-29	Women	-27%	-2%	2%	0%	-1%
	Men	-12%	1%	-7%	0%	10%
30-34	Women	-37%	-5%	-5%	0%	3%
	Men	-21%	-20%	-18%	0%	-8%
35 and over	Women	-31%	1%	0%	0%	6%
	Men	-8%	-3%	-3%	0%	6%
All ages	Women	-9%	-4%	-4%	0%	1%
	Men	-7%	-1%	-1%	0%	2%

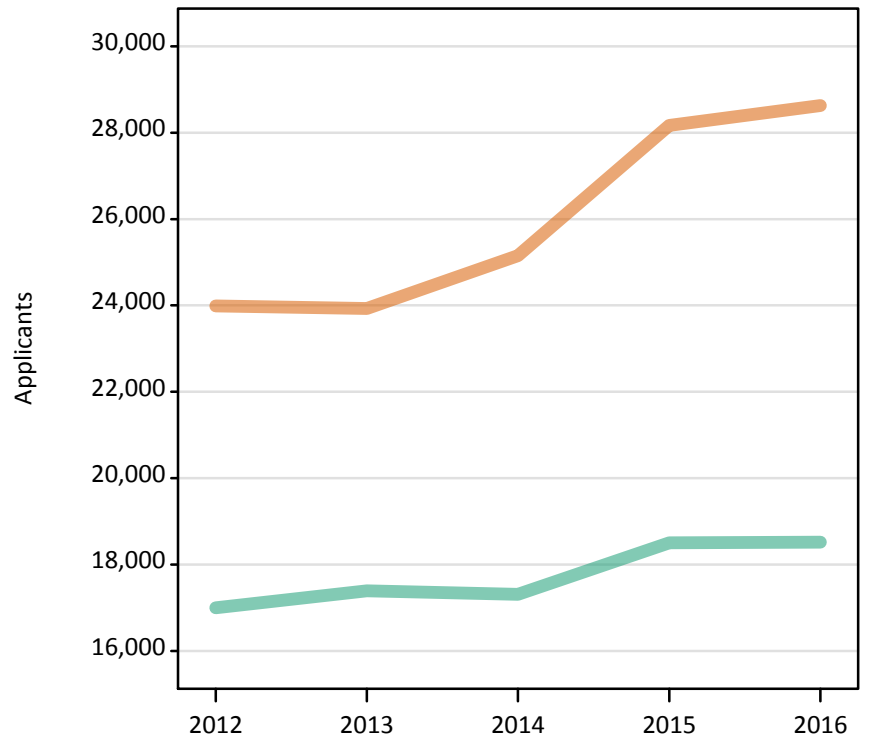
F.2.17 Applicants by sex : Scotland
Difference between cycle and 2015 cycle

Men
Women



F.2.18 Applicants by sex : Scotland

Men
Women



F.2.19 Applicants by age and sex : Scotland

Age group and sex of applicant		2012	2013	2014	2015	2016
Under 18	Women	480	400	410	450	440
	Men	310	270	250	260	300
18	Women	11,000	10,900	11,290	11,430	11,450
	Men	8,040	8,090	8,010	8,070	7,790
19	Women	3,230	3,120	3,130	3,260	3,430
	Men	2,330	2,290	2,260	2,340	2,420
20-24	Women	5,360	5,660	5,960	6,950	6,960
	Men	4,060	4,450	4,330	4,720	4,820
25-29	Women	1,730	1,700	1,920	2,780	2,850
	Men	1,100	1,140	1,220	1,550	1,580
30-34	Women	870	900	1,000	1,380	1,420
	Men	540	550	570	670	710
35 and over	Women	1,310	1,260	1,430	1,920	2,080
	Men	620	610	660	890	900
All ages	Women	23,990	23,930	25,150	28,170	28,630
	Men	17,000	17,390	17,310	18,500	18,520

F.2.20 Applicants by age and sex : Scotland

Difference between cycle and 2015 cycle

Age group and sex of applicant		2012	2013	2014	2015	2016
Under 18	Women	7%	-12%	-10%	0%	-2%
	Men	18%	5%	-3%	0%	15%
18	Women	-4%	-5%	-1%	0%	0%
	Men	-0%	0%	-1%	0%	-3%
19	Women	-1%	-4%	-4%	0%	5%
	Men	-0%	-2%	-3%	0%	3%
20-24	Women	-23%	-19%	-14%	0%	0%
	Men	-14%	-6%	-8%	0%	2%
25-29	Women	-38%	-39%	-31%	0%	2%
	Men	-29%	-26%	-21%	0%	2%
30-34	Women	-37%	-35%	-27%	0%	3%
	Men	-19%	-18%	-15%	0%	6%
35 and over	Women	-32%	-35%	-26%	0%	8%
	Men	-30%	-32%	-26%	0%	1%
All ages	Women	-15%	-15%	-11%	0%	2%
	Men	-8%	-6%	-6%	0%	0%

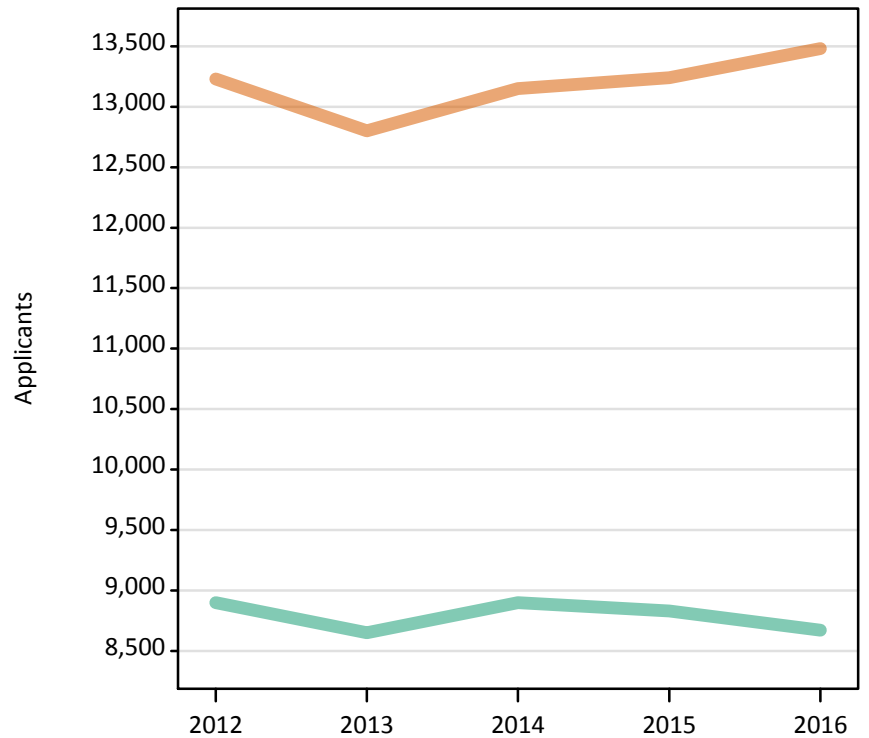
F.2.21 Applicants by sex : Wales
Difference between cycle and 2015 cycle

Men
Women



F.2.22 Applicants by sex : Wales

Men
Women



F.2.23 Applicants by age and sex : Wales

Age group and sex of applicant		2012	2013	2014	2015	2016
Under 18	Women	10	30	20	20	10
	Men	20	10	10	0	20
18	Women	6,570	6,370	6,520	6,900	6,960
	Men	4,770	4,650	4,880	4,880	4,870
19	Women	2,210	2,210	2,300	2,200	2,300
	Men	1,760	1,720	1,770	1,770	1,810
20-24	Women	2,380	2,240	2,290	2,210	2,260
	Men	1,600	1,520	1,490	1,480	1,350
25-29	Women	860	890	920	850	840
	Men	360	370	370	360	310
30-34	Women	490	460	500	460	470
	Men	190	150	150	130	140
35 and over	Women	700	610	610	600	640
	Men	200	210	220	200	180
All ages	Women	13,230	12,800	13,150	13,240	13,480
	Men	8,900	8,650	8,900	8,830	8,670

F.2.24 Applicants by age and sex : Wales

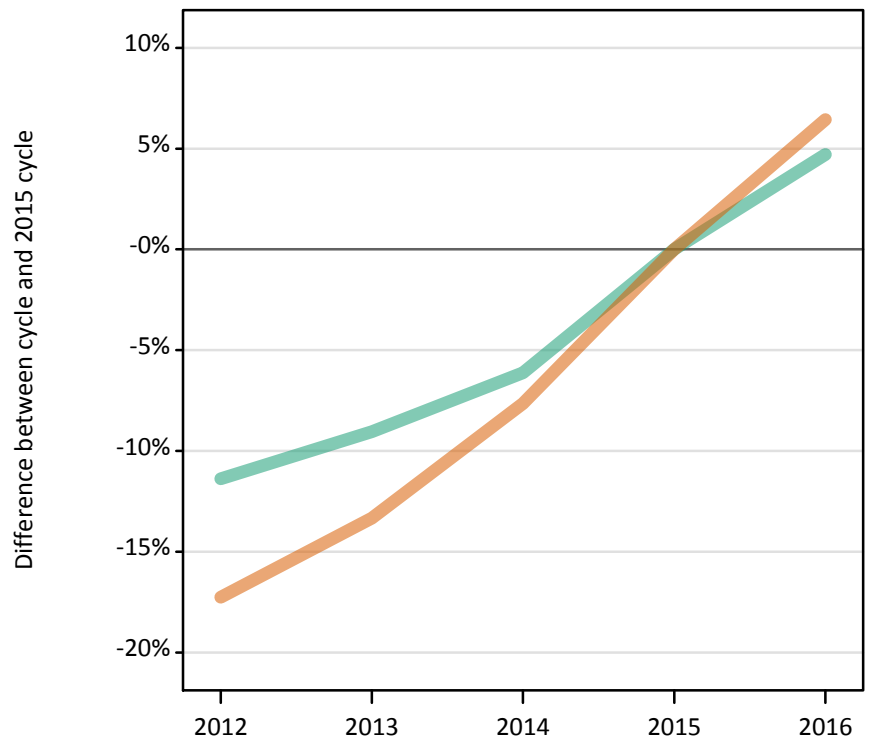
Difference between cycle and 2015 cycle

Age group and sex of applicant		2012	2013	2014	2015	2016
Under 18	Women	-39%	39%	-17%	0%	-28%
	Men	650%	550%	550%	0%	700%
18	Women	-5%	-8%	-5%	0%	1%
	Men	-2%	-5%	0%	0%	-0%
19	Women	0%	0%	4%	0%	4%
	Men	-1%	-3%	-0%	0%	2%
20-24	Women	8%	1%	4%	0%	2%
	Men	8%	3%	1%	0%	-9%
25-29	Women	2%	4%	8%	0%	-1%
	Men	1%	3%	3%	0%	-15%
30-34	Women	6%	0%	7%	0%	2%
	Men	42%	17%	16%	0%	8%
35 and over	Women	18%	3%	3%	0%	7%
	Men	2%	7%	9%	0%	-10%
All ages	Women	-0%	-3%	-1%	0%	2%
	Men	1%	-2%	1%	0%	-2%

F.2.25 Applicants by sex : EU (excluding UK)

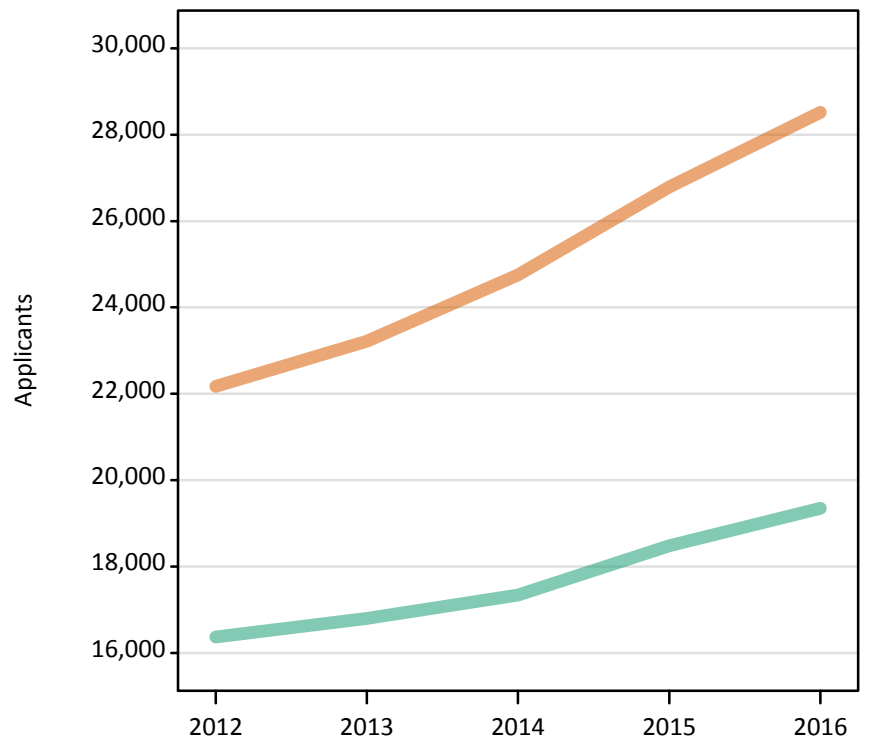
Difference between cycle and 2015 cycle

Men
Women



F.2.26 Applicants by sex : EU (excluding UK)

Men
Women



F.2.27 Applicants by age and sex : EU (excluding UK)

Age group and sex of applicant		2012	2013	2014	2015	2016
Under 18	Women	1,810	1,850	2,110	2,320	2,370
	Men	1,020	1,160	1,230	1,480	1,540
18	Women	7,650	8,040	8,620	9,650	10,540
	Men	5,180	5,320	5,760	6,390	6,810
19	Women	6,590	6,990	7,500	7,990	8,670
	Men	4,940	5,150	5,140	5,500	5,890
20-24	Women	5,160	5,420	5,570	5,790	5,950
	Men	4,400	4,370	4,490	4,330	4,320
25-29	Women	640	660	660	720	720
	Men	540	500	480	560	560
30-34	Women	180	160	150	160	130
	Men	170	160	130	130	120
35 and over	Women	140	120	150	150	150
	Men	130	140	110	100	110
All ages	Women	22,170	23,220	24,750	26,790	28,520
	Men	16,370	16,800	17,340	18,480	19,350

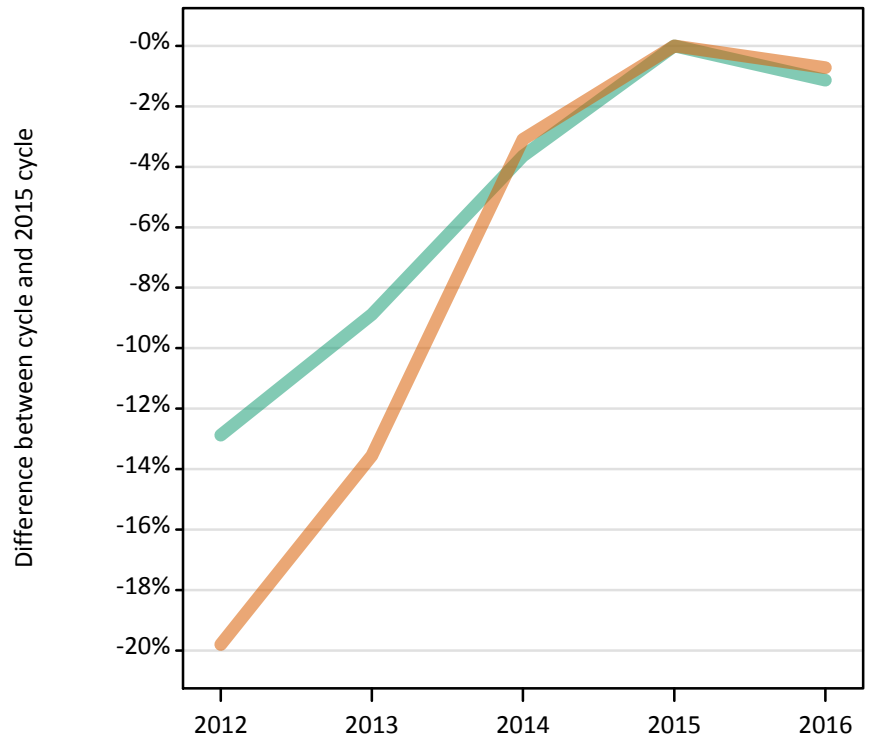
F.2.28 Applicants by age and sex : EU (excluding UK)

Difference between cycle and 2015 cycle

Age group and sex of applicant		2012	2013	2014	2015	2016
Under 18	Women	-22%	-20%	-9%	0%	2%
	Men	-31%	-21%	-16%	0%	4%
18	Women	-21%	-17%	-11%	0%	9%
	Men	-19%	-17%	-10%	0%	7%
19	Women	-18%	-13%	-6%	0%	8%
	Men	-10%	-6%	-6%	0%	7%
20-24	Women	-11%	-6%	-4%	0%	3%
	Men	2%	1%	4%	0%	-0%
25-29	Women	-11%	-8%	-8%	0%	0%
	Men	-3%	-10%	-13%	0%	1%
30-34	Women	9%	-2%	-9%	0%	-21%
	Men	31%	26%	1%	0%	-6%
35 and over	Women	-9%	-24%	-4%	0%	-2%
	Men	27%	36%	10%	0%	11%
All ages	Women	-17%	-13%	-8%	0%	6%
	Men	-11%	-9%	-6%	0%	5%

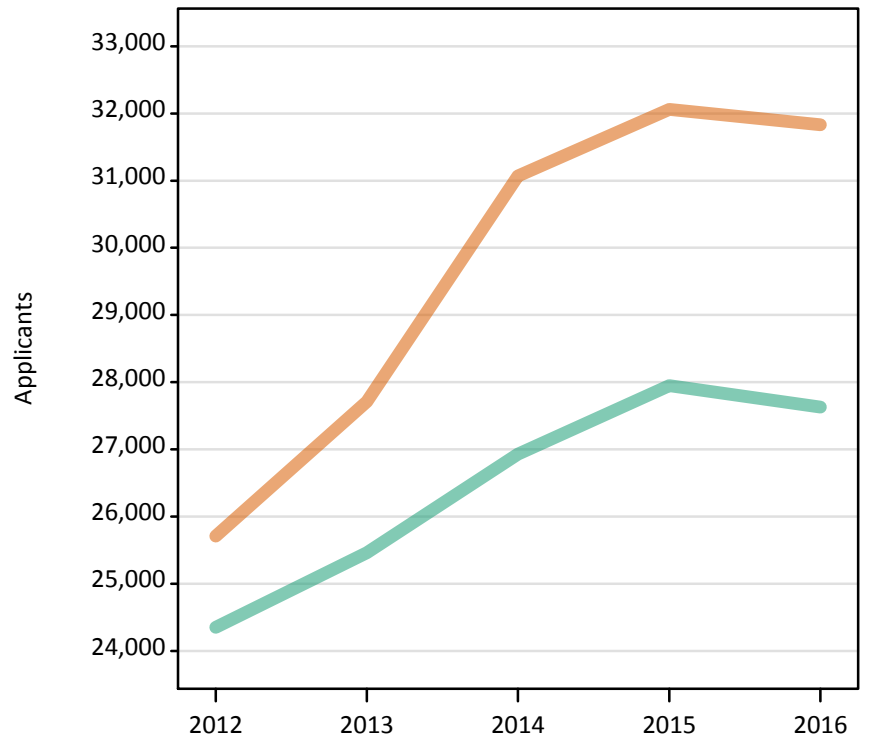
F.2.29 Applicants by sex : Not EU
Difference between cycle and 2015 cycle

Men
Women



F.2.30 Applicants by sex : Not EU

Men
Women



F.2.31 Applicants by age and sex : Not EU

Age group and sex of applicant		2012	2013	2014	2015	2016
Under 18	Women	2,040	2,370	2,810	2,700	3,010
	Men	1,880	2,120	2,400	2,410	2,400
18	Women	8,920	10,310	11,370	12,230	12,550
	Men	7,850	8,670	9,410	10,280	10,390
19	Women	7,020	7,300	8,220	8,340	8,050
	Men	6,090	6,240	6,660	6,880	6,930
20-24	Women	6,570	6,640	7,530	7,480	7,060
	Men	7,050	7,080	7,160	7,100	6,690
25-29	Women	730	710	740	880	750
	Men	940	900	820	810	790
30-34	Women	250	220	230	240	220
	Men	300	280	290	280	260
35 and over	Women	180	160	170	200	180
	Men	230	190	190	180	170
All ages	Women	25,710	27,710	31,070	32,060	31,830
	Men	24,350	25,460	26,930	27,950	27,630

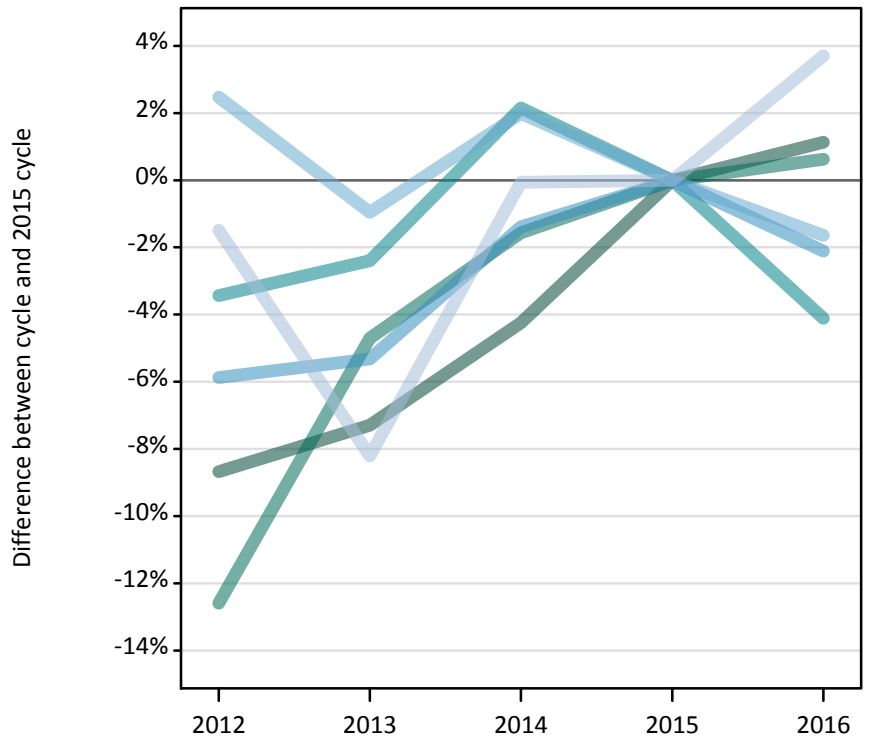
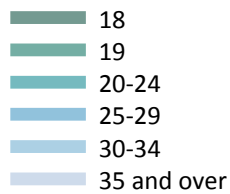
F.2.32 Applicants by age and sex : Not EU

Difference between cycle and 2015 cycle

Age group and sex of applicant		2012	2013	2014	2015	2016
Under 18	Women	-24%	-12%	4%	0%	12%
	Men	-22%	-12%	-0%	0%	-0%
18	Women	-27%	-16%	-7%	0%	3%
	Men	-24%	-16%	-8%	0%	1%
19	Women	-16%	-12%	-1%	0%	-3%
	Men	-12%	-9%	-3%	0%	1%
20-24	Women	-12%	-11%	1%	0%	-6%
	Men	-1%	-0%	1%	0%	-6%
25-29	Women	-17%	-19%	-16%	0%	-15%
	Men	15%	11%	1%	0%	-3%
30-34	Women	4%	-8%	-5%	0%	-6%
	Men	7%	-1%	2%	0%	-8%
35 and over	Women	-11%	-23%	-16%	0%	-11%
	Men	24%	2%	6%	0%	-6%
All ages	Women	-20%	-14%	-3%	0%	-1%
	Men	-13%	-9%	-4%	0%	-1%

F.2.33 Applicants by domicile and age : All domiciles

Difference between cycle and 2015 cycle



F.2.34 Applicants by domicile and age : All domiciles

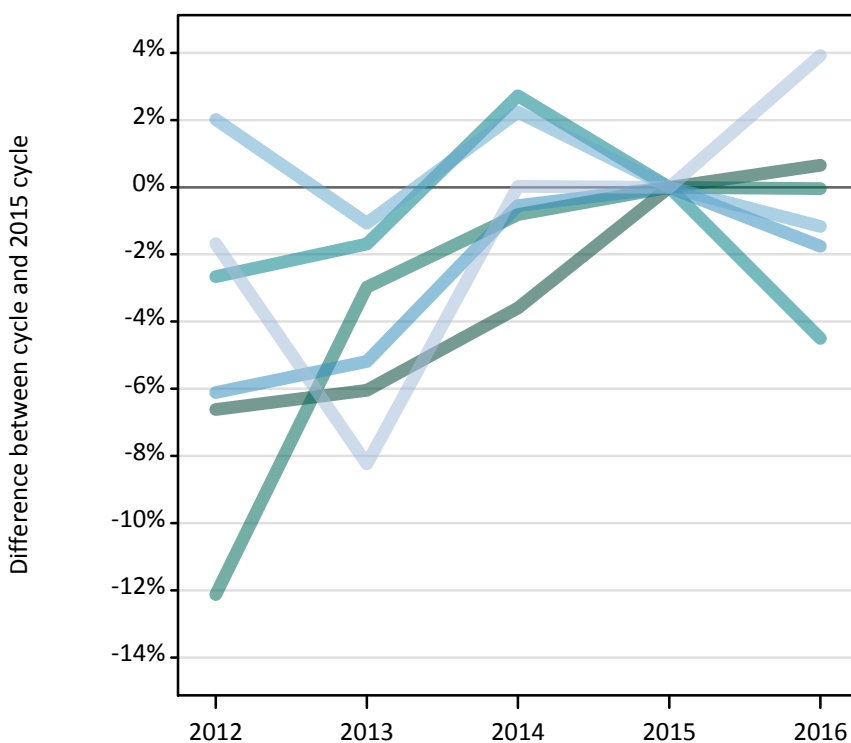
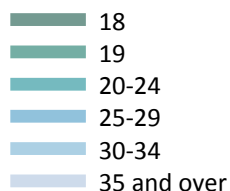
Domicile and age group		2012	2013	2014	2015	2016
All domiciles	Under 18	8,500	9,080	10,140	10,600	11,050
	18	284,900	289,210	298,720	311,950	315,490
	19	110,420	120,380	124,340	126,320	127,110
	20-24	107,060	108,220	113,260	110,870	106,310
	25-29	27,240	27,400	28,540	28,940	28,330
	30-34	15,090	14,580	15,020	14,720	14,480
	35 and over	22,410	20,880	22,740	22,750	23,590

F.2.35 Applicants by domicile and age : All domiciles

Difference between cycle and 2015 cycle

Domicile and age group		2012	2013	2014	2015	2016
All domiciles	Under 18	-20%	-14%	-4%	0%	4%
	18	-9%	-7%	-4%	0%	1%
	19	-13%	-5%	-2%	0%	1%
	20-24	-3%	-2%	2%	0%	-4%
	25-29	-6%	-5%	-1%	0%	-2%
	30-34	2%	-1%	2%	0%	-2%
	35 and over	-1%	-8%	-0%	0%	4%

F.2.36 Applicants by domicile and age : UK
Difference between cycle and 2015 cycle



F.2.37 Applicants by domicile and age : UK

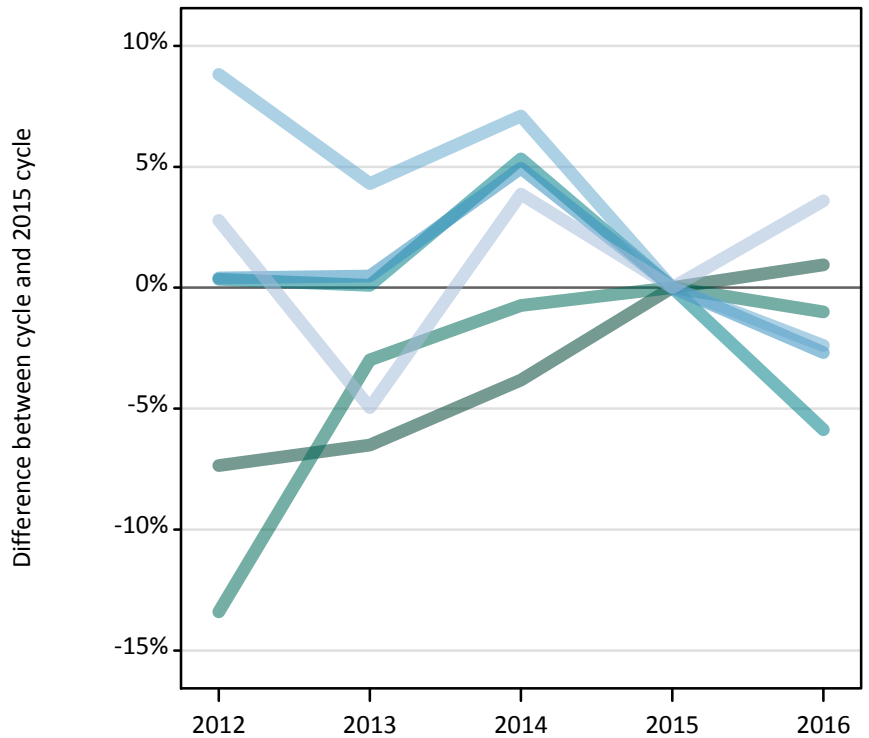
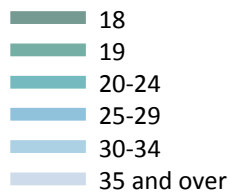
Domicile and age group		2012	2013	2014	2015	2016
UK	Under 18	1,750	1,580	1,590	1,700	1,730
	18	255,300	256,870	263,560	273,400	275,200
	19	85,770	94,700	96,820	97,610	97,570
	20-24	83,880	84,710	88,520	86,170	82,290
	25-29	24,390	24,630	25,830	25,970	25,520
	30-34	14,200	13,770	14,230	13,910	13,750
	35 and over	21,740	20,290	22,120	22,110	22,980

F.2.38 Applicants by domicile and age : UK
Difference between cycle and 2015 cycle

Domicile and age group		2012	2013	2014	2015	2016
UK	Under 18	3%	-7%	-6%	0%	2%
	18	-7%	-6%	-4%	0%	1%
	19	-12%	-3%	-1%	0%	-0%
	20-24	-3%	-2%	3%	0%	-5%
	25-29	-6%	-5%	-1%	0%	-2%
	30-34	2%	-1%	2%	0%	-1%
	35 and over	-2%	-8%	0%	0%	4%

F.2.39 Applicants by domicile and age : England

Difference between cycle and 2015 cycle



F.2.40 Applicants by domicile and age : England

Domicile and age group		2012	2013	2014	2015	2016
England	Under 18	880	830	880	930	920
	18	213,220	215,180	221,370	230,160	232,340
	19	73,570	82,410	84,320	84,950	84,100
	20-24	67,360	67,190	70,700	67,120	63,180
	25-29	19,670	19,680	20,560	19,590	19,060
	30-34	11,820	11,330	11,640	10,870	10,610
	35 and over	18,590	17,190	18,790	18,080	18,730

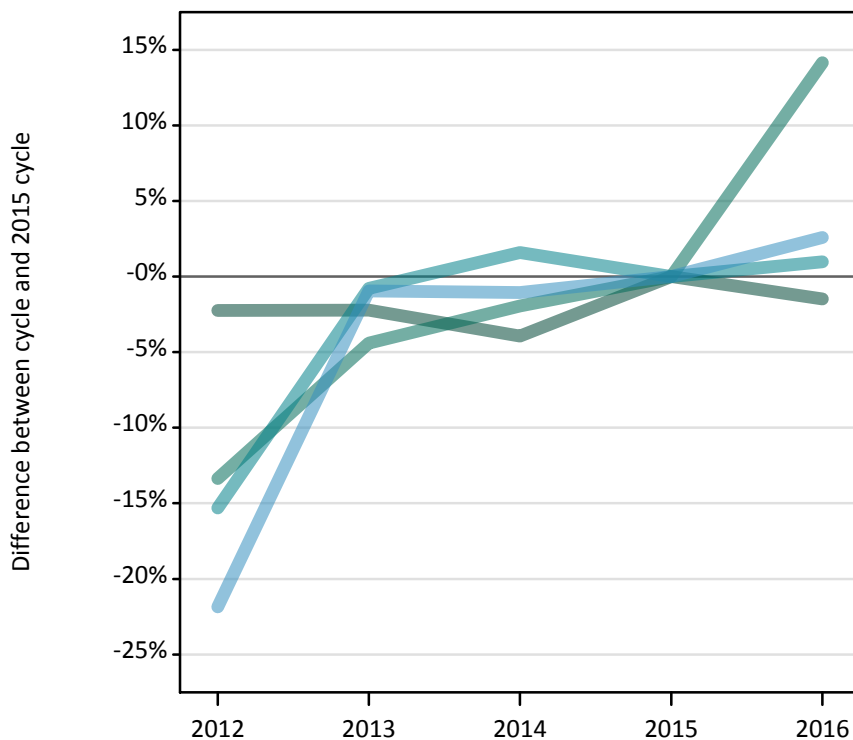
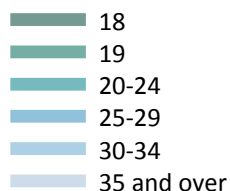
F.2.41 Applicants by domicile and age : England

Difference between cycle and 2015 cycle

Domicile and age group		2012	2013	2014	2015	2016
England	Under 18	-6%	-11%	-6%	0%	-2%
	18	-7%	-7%	-4%	0%	1%
	19	-13%	-3%	-1%	0%	-1%
	20-24	0%	0%	5%	0%	-6%
	25-29	0%	0%	5%	0%	-3%
	30-34	9%	4%	7%	0%	-2%
	35 and over	3%	-5%	4%	0%	4%

F.2.42 Applicants by domicile and age : Northern Ireland

Difference between cycle and 2015 cycle



F.2.43 Applicants by domicile and age : Northern Ireland

Domicile and age group		2012	2013	2014	2015	2016
Northern Ireland	Under 18	50	40	30	30	40
	18	11,690	11,690	11,490	11,960	11,780
	19	2,670	2,950	3,030	3,090	3,520
	20-24	3,120	3,660	3,750	3,690	3,720
	25-29	670	840	840	850	870
	30-34	280	360	370	400	400
	35 and over	320	420	420	420	450

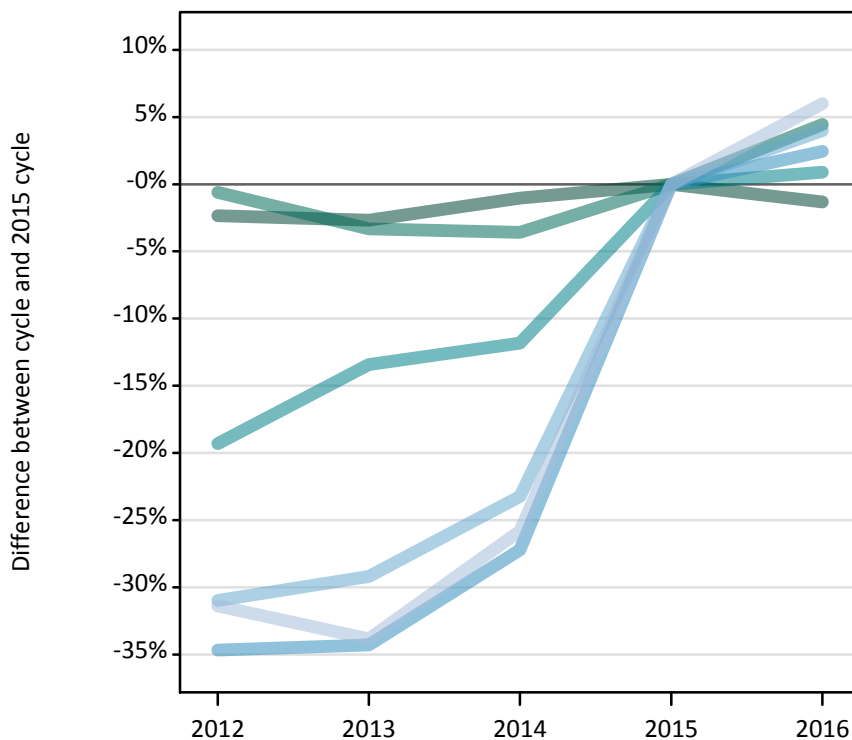
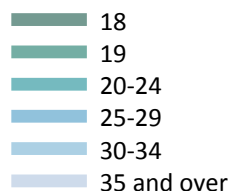
F.2.44 Applicants by domicile and age : Northern Ireland

Difference between cycle and 2015 cycle

Domicile and age group		2012	2013	2014	2015	2016
Northern Ireland	Under 18	50%	3%	-18%	0%	18%
	18	-2%	-2%	-4%	0%	-1%
	19	-13%	-4%	-2%	0%	14%
	20-24	-15%	-1%	2%	0%	1%
	25-29	-22%	-1%	-1%	0%	3%
	30-34	-31%	-10%	-9%	0%	-1%
	35 and over	-24%	-0%	-1%	0%	6%

F.2.45 Applicants by domicile and age : Scotland

Difference between cycle and 2015 cycle



F.2.46 Applicants by domicile and age : Scotland

Domicile and age group		2012	2013	2014	2015	2016
Scotland	Under 18	790	670	660	710	740
	18	19,040	18,980	19,300	19,500	19,250
	19	5,560	5,410	5,400	5,600	5,850
	20-24	9,420	10,100	10,290	11,670	11,780
	25-29	2,830	2,840	3,150	4,330	4,430
	30-34	1,410	1,450	1,570	2,050	2,130
	35 and over	1,930	1,860	2,090	2,810	2,980

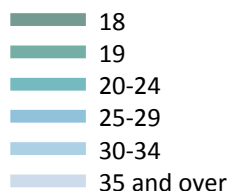
F.2.47 Applicants by domicile and age : Scotland

Difference between cycle and 2015 cycle

Domicile and age group		2012	2013	2014	2015	2016
Scotland	Under 18	11%	-6%	-7%	0%	5%
	18	-2%	-3%	-1%	0%	-1%
	19	-1%	-3%	-4%	0%	4%
	20-24	-19%	-13%	-12%	0%	1%
	25-29	-35%	-34%	-27%	0%	2%
	30-34	-31%	-29%	-23%	0%	4%
	35 and over	-31%	-34%	-26%	0%	6%

F.2.48 Applicants by domicile and age : Wales

Difference between cycle and 2015 cycle



F.2.49 Applicants by domicile and age : Wales

Domicile and age group		2012	2013	2014	2015	2016
Wales	Under 18	30	40	30	20	30
	18	11,340	11,020	11,410	11,780	11,830
	19	3,970	3,930	4,070	3,980	4,110
	20-24	3,980	3,760	3,780	3,690	3,610
	25-29	1,230	1,260	1,290	1,210	1,150
	30-34	680	620	650	600	620
	35 and over	910	820	830	800	820

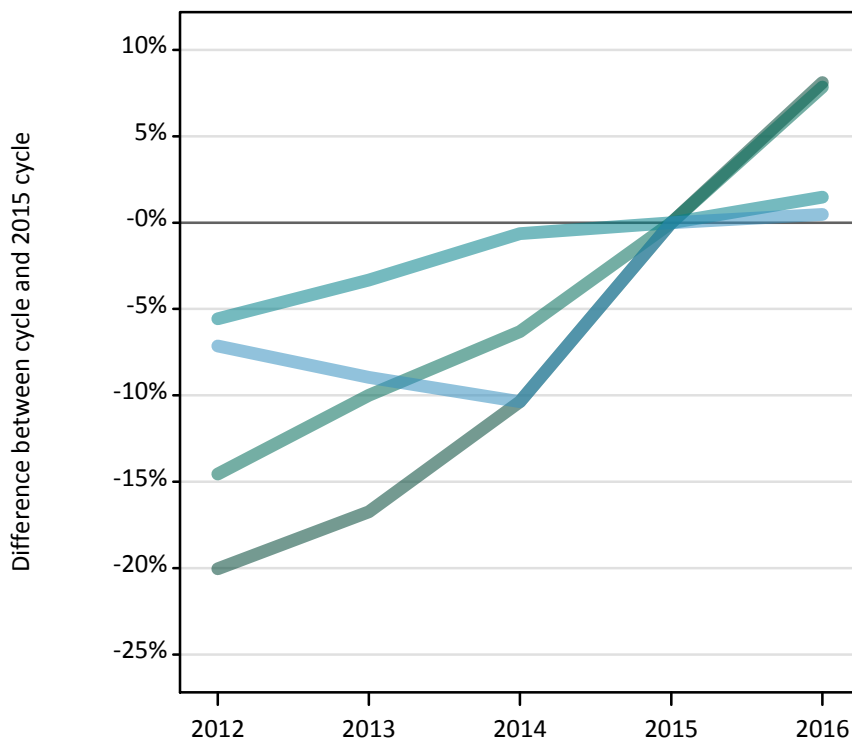
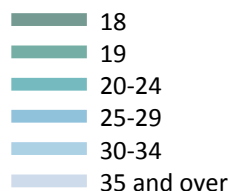
F.2.50 Applicants by domicile and age : Wales

Difference between cycle and 2015 cycle

Domicile and age group		2012	2013	2014	2015	2016
Wales	Under 18	30%	90%	40%	0%	45%
	18	-4%	-6%	-3%	0%	0%
	19	-0%	-1%	2%	0%	3%
	20-24	8%	2%	2%	0%	-2%
	25-29	1%	4%	6%	0%	-5%
	30-34	14%	4%	9%	0%	3%
	35 and over	14%	4%	4%	0%	3%

F.2.51 Applicants by domicile and age : EU (excluding UK)

Difference between cycle and 2015 cycle



F.2.52 Applicants by domicile and age : EU (excluding UK)

Domicile and age group		2012	2013	2014	2015	2016
EU (excluding UK)	Under 18	2,840	3,010	3,340	3,800	3,910
	18	12,830	13,360	14,380	16,040	17,340
	19	11,530	12,140	12,640	13,490	14,550
	20-24	9,560	9,790	10,060	10,120	10,270
	25-29	1,180	1,160	1,140	1,270	1,280
	30-34	350	320	280	290	250
	35 and over	270	250	260	250	260

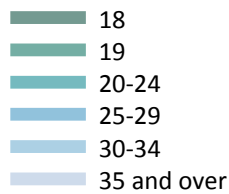
F.2.53 Applicants by domicile and age : EU (excluding UK)

Difference between cycle and 2015 cycle

Domicile and age group		2012	2013	2014	2015	2016
EU (excluding UK)	Under 18	-25%	-21%	-12%	0%	3%
	18	-20%	-17%	-10%	0%	8%
	19	-15%	-10%	-6%	0%	8%
	20-24	-6%	-3%	-1%	0%	1%
	25-29	-7%	-9%	-10%	0%	0%
	30-34	19%	10%	-4%	0%	-15%
	35 and over	5%	-0%	2%	0%	3%

F.2.54 Applicants by domicile and age : Not EU

Difference between cycle and 2015 cycle



F.2.55 Applicants by domicile and age : Not EU

Domicile and age group		2012	2013	2014	2015	2016
Not EU	Under 18	3,920	4,490	5,210	5,100	5,410
	18	16,770	18,980	20,780	22,510	22,950
	19	13,120	13,540	14,880	15,220	14,990
	20-24	13,630	13,720	14,680	14,580	13,750
	25-29	1,670	1,610	1,570	1,690	1,530
	30-34	550	500	520	520	480
	35 and over	410	340	360	380	350

F.2.56 Applicants by domicile and age : Not EU

Difference between cycle and 2015 cycle

Domicile and age group		2012	2013	2014	2015	2016
Not EU	Under 18	-23%	-12%	2%	0%	6%
	18	-25%	-16%	-8%	0%	2%
	19	-14%	-11%	-2%	0%	-2%
	20-24	-7%	-6%	1%	0%	-6%
	25-29	-1%	-5%	-8%	0%	-9%
	30-34	6%	-4%	-1%	0%	-7%
	35 and over	5%	-11%	-6%	0%	-9%

F.2.57 Technical notes and definitions

Applicants have been able to submit applications for all 2016 courses since early September.

People who submit their applications to UCAS by the January deadline are considered 'on time' applicants for the large majority of courses offered through UCAS. Some art and design courses have a later deadline of 24 March. Almost all main scheme applications have been received by the 24 March deadline.

Counts of the number of applicants reported have been rounded to the nearest 10 applicants, this may result in instances where totals do not equal the sum of the components. Proportional changes have been rounded to the nearest whole percentage point.

Age

This statistical release uses country-specific age definitions which align with the cut off points for school/college cohorts within the different administrations of the UK. For England and Wales ages are defined on the 31 August, for Northern Ireland on the 1 July and for Scotland on the 28 February the following year. Defining ages in this way matches the assignment of children to school cohorts. For applicants outside of the UK the cohort cut off for England and Wales has been used.

Applicant

A person who has made an application in the UCAS system during the cycle reported (including applications for deferred entry). Records of prior acceptance (RPAs) are excluded.

Application

An application to a course at a provider made by an applicant in the UCAS main scheme. Applicants may make up to five main scheme applications.

Country of provider

An applicant may be counted once for each provider country they have applied to in the main scheme. If an applicant has applied to providers in multiple countries then the applicant is counted once within each country of provider applied to.

This statistical release excludes a small number of applications to a provider based in the EU.

Domicile

Declared area of permanent residence. The Channel Islands and the Isle of Man have been assigned as 'Not EU'.

First time applicant

An applicant that did not apply to the UCAS scheme in the previous cycle.

Main scheme

The main UCAS application scheme through which up to five providers/courses can be applied to. This opens in September and closes to new applications on 30 June the following year.

Reapplicant

An applicant that applied to the UCAS scheme in the previous cycle.

Subject group

The JACS3 classification used to classify courses into subject groups.

The values reported against subject groups in the 2015 cycle have been restated from those which appeared in the equivalent report in 2015.

Tariff group of provider

Providers are grouped as higher, medium or lower tariff based on their average levels of attainment of their accepted applicants (summarised through UCAS Tariff points) in recent cycles. Each group of providers accounted for around a third of all UK 18 year old acceptances in recent cycles.