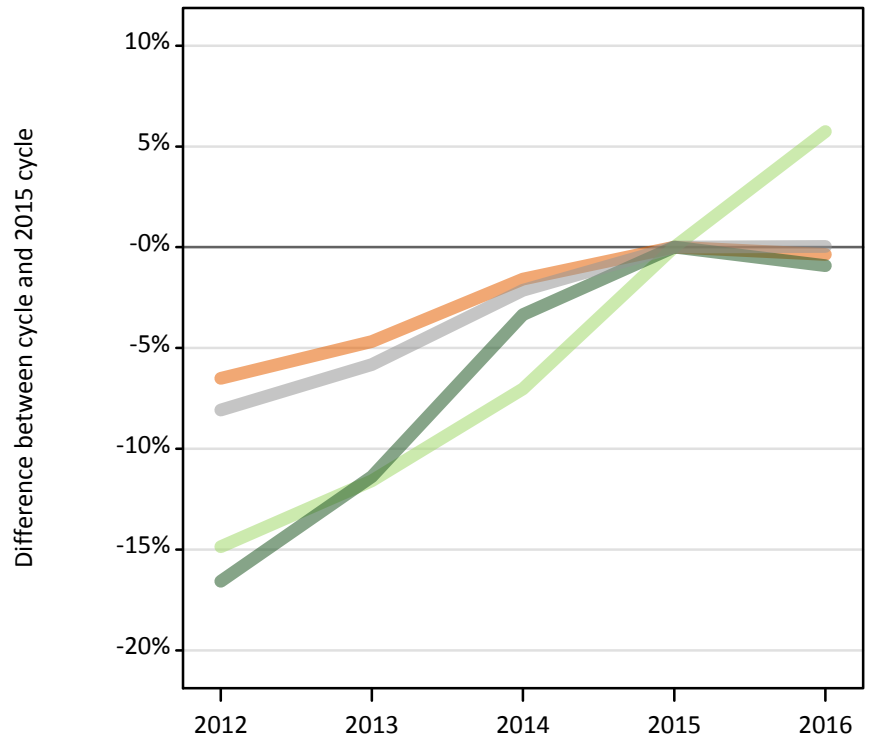


Applicants by domicile at the 24 March deadline

F.1.1 Applicants by domicile group

Difference between cycle and 2015 cycle



F.1.2 Applicants by domicile group

Domicile group of applicant	2012	2013	2014	2015	2016
UK	487,020	496,550	512,660	520,880	519,030
EU (excluding UK)	38,540	40,030	42,090	45,270	47,870
Not EU	50,060	53,180	58,000	60,000	59,460
All domiciles	575,620	589,750	612,750	626,150	626,360

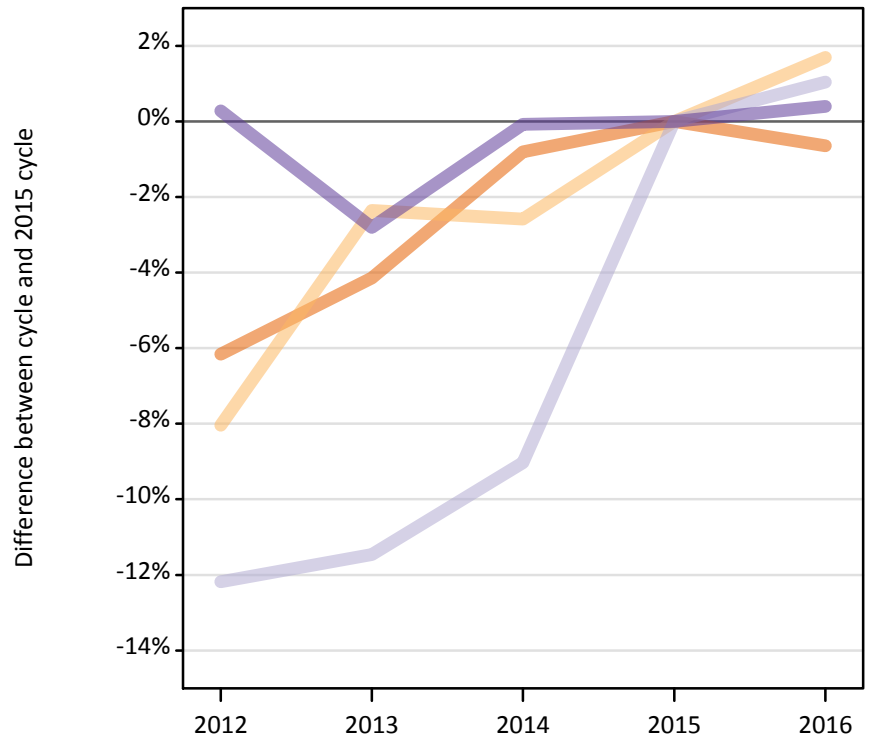
F.1.3 Applicants by domicile group

Difference between cycle and 2015 cycle

Domicile group of applicant	2012	2013	2014	2015	2016
UK	-7%	-5%	-2%	0%	-0%
EU (excluding UK)	-15%	-12%	-7%	0%	6%
Not EU	-17%	-11%	-3%	0%	-1%
All domiciles	-8%	-6%	-2%	0%	0%

F.1.4 Applicants by UK country of domicile

Difference between cycle and 2015 cycle



F.1.5 Applicants by UK country of domicile

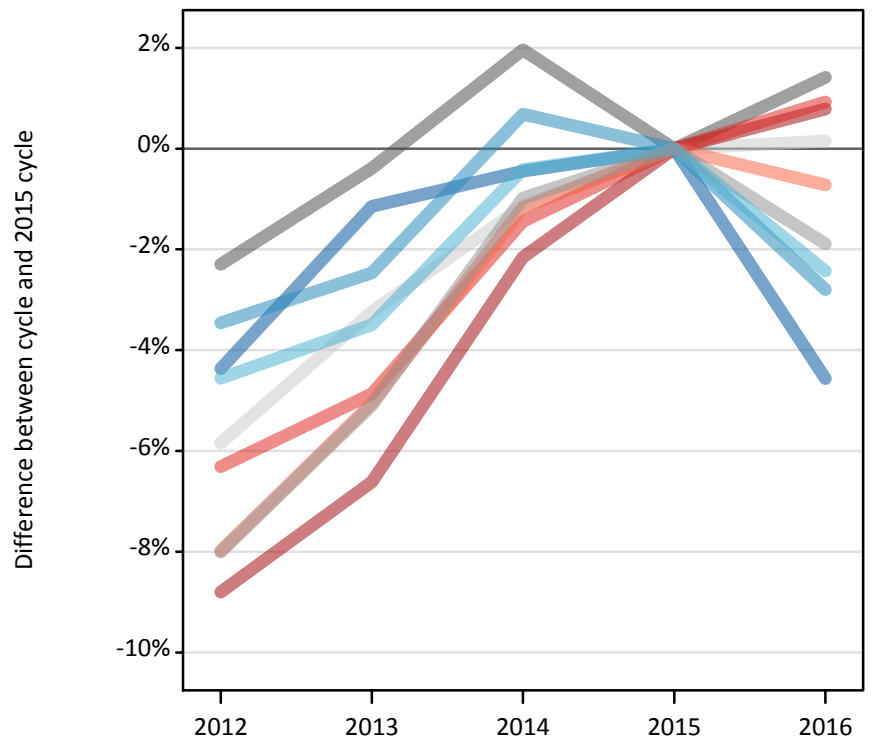
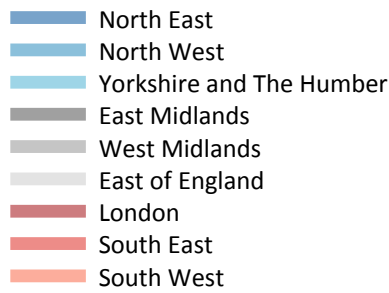
Domicile group of applicant	2012	2013	2014	2015	2016
England	405,110	413,820	428,250	431,700	428,940
Northern Ireland	18,800	19,960	19,910	20,440	20,780
Scotland	40,980	41,320	42,460	46,670	47,150
Wales	22,130	21,450	22,050	22,070	22,160
UK	487,020	496,550	512,660	520,880	519,030

F.1.6 Applicants by UK country of domicile

Difference between cycle and 2015 cycle

Domicile group of applicant	2012	2013	2014	2015	2016
England	-6%	-4%	-1%	0%	-1%
Northern Ireland	-8%	-2%	-3%	0%	2%
Scotland	-12%	-11%	-9%	0%	1%
Wales	0%	-3%	-0%	0%	0%
UK	-7%	-5%	-2%	0%	-0%

F.1.7 Applicants by English region of domicile Difference between cycle and 2015 cycle



F.1.8 Applicants by English region of domicile

English region	2012	2013	2014	2015	2016
North East	17,910	18,520	18,650	18,730	17,880
Yorkshire and The Humber	37,730	38,150	39,370	39,530	38,570
North West	55,830	56,410	58,230	57,830	56,210
East Midlands	31,540	32,160	32,920	32,290	32,740
West Midlands	42,500	43,850	45,750	46,200	45,330
East of England	41,320	42,460	43,380	43,880	43,950
London	77,520	79,380	83,170	85,000	85,670
South East	64,560	65,550	67,910	68,900	69,540
South West	36,200	37,350	38,880	39,340	39,060

F.1.9 Applicants by English region of domicile Difference between cycle and 2015 cycle

English region	2012	2013	2014	2015	2016
North East	-4%	-1%	-0%	0%	-5%
Yorkshire and The Humber	-5%	-3%	-0%	0%	-2%
North West	-3%	-2%	1%	0%	-3%
East Midlands	-2%	-0%	2%	0%	1%
West Midlands	-8%	-5%	-1%	0%	-2%
East of England	-6%	-3%	-1%	0%	0%
London	-9%	-7%	-2%	0%	1%
South East	-6%	-5%	-1%	0%	1%
South West	-8%	-5%	-1%	0%	-1%

F.1.10 Applicants by declared country of domicile

Selected countries

Declared country of domicile	2012	2013	2014	2015	2016
Angola	60	60	70	160	130
Australia	420	480	510	550	520
Austria	530	540	560	590	610
Azerbaijan	190	180	240	220	150
Bahrain	290	310	310	290	290
Bangladesh	300	230	250	250	200
Belgium	820	890	940	1,020	1,040
Bermuda	190	180	190	180	200
Botswana	140	60	100	160	140
Brazil	170	180	210	250	260
Brunei	640	620	780	450	390
Bulgaria	2,220	2,480	2,210	2,200	2,390
Canada	1,960	1,960	1,940	2,040	1,900
Cayman Islands	100	90	120	90	110
China	7,540	8,160	8,450	9,410	10,270
Croatia	40	60	130	210	310
Cyprus (European Union)	3,040	3,020	3,020	2,980	2,850
Czech Republic	420	440	540	760	1,000
Denmark	390	430	410	450	470
Ecuador	30	40	80	70	150
Egypt	290	420	530	610	710
Estonia	520	570	470	460	440
Finland	690	750	840	930	950
France	3,440	3,560	4,050	4,590	4,890
Germany	3,120	2,900	2,890	3,070	3,310
Ghana	190	190	230	210	220
Gibraltar	270	300	280	280	280
Greece	2,070	2,120	2,130	2,110	2,160
Guernsey	290	290	290	310	330
Hong Kong	5,360	5,370	5,840	5,630	5,500
Hungary	540	740	750	810	910
India	2,620	2,980	3,310	3,460	3,500
Indonesia	300	400	440	510	520
Iran	340	210	200	180	200
Ireland	5,750	5,690	5,490	5,450	4,990
Isle of Man	510	480	490	450	480
Israel	100	130	90	120	130
Italy	2,390	2,890	3,690	4,340	4,520
Japan	410	440	490	440	410
Jersey	560	520	490	510	540
Jordan	310	360	360	370	360
Kazakhstan	310	320	310	300	270
Kenya	560	540	560	590	550
Korea (South)	1,170	1,220	1,190	1,330	1,430
Kuwait	300	300	350	400	410

Declared country of domicile	2012	2013	2014	2015	2016
Latvia	680	520	490	470	530
Lebanon	150	180	210	230	320
Lithuania	2,270	1,960	1,770	1,640	1,670
Luxembourg	360	410	450	430	420
Macao	140	130	170	240	210
Malaysia	3,060	3,690	5,010	5,160	4,670
Malta	90	100	90	100	110
Mauritius	420	340	450	360	370
Mexico	120	130	130	160	180
Morocco	190	230	300	320	300
Nepal	120	90	80	60	60
Netherlands	680	720	760	820	860
New Zealand	130	140	160	170	190
Nigeria	1,490	1,560	1,520	1,550	1,230
Norway	1,390	1,510	1,540	1,510	1,150
Oman	130	160	200	250	250
Pakistan	1,550	1,510	1,520	1,570	1,630
Philippines	90	110	110	140	120
Poland	1,720	1,970	2,310	2,590	3,270
Portugal	590	750	780	980	1,150
Qatar	260	340	280	360	370
Romania	2,430	2,290	2,520	3,150	3,310
Russia	740	880	1,090	1,210	980
Saudi Arabia	690	700	710	770	750
Serbia	90	130	110	90	120
Singapore	3,480	3,690	3,990	3,810	3,410
Slovakia	450	450	560	550	760
Slovenia	100	120	150	160	150
South Africa	230	250	290	350	400
Spain	1,470	1,890	2,270	2,660	3,120
Sri Lanka	300	270	270	210	210
Sweden	1,450	1,450	1,460	1,390	1,300
Switzerland	910	1,060	1,080	1,200	1,230
Taiwan	280	260	300	330	310
Tanzania	130	140	160	140	120
Thailand	610	620	750	720	720
Trinidad and Tobago	140	160	150	190	190
Turkey	430	490	540	550	700
Uganda	130	140	100	110	130
Ukraine	210	280	290	250	220
United Arab Emirates	800	930	1,130	1,270	1,340
United States of America	2,780	3,100	3,400	3,490	3,680
Vietnam	600	550	490	420	330
Zambia	120	130	110	120	120
Zimbabwe	310	300	340	350	380

F.1.11 Applicants by declared country of domicile

Selected countries, difference between cycle and 2015 cycle

Declared country of domicile	2012	2013	2014	2015	2016
Angola	-64%	-61%	-56%	0%	-20%
Australia	-22%	-12%	-6%	0%	-4%
Austria	-10%	-9%	-5%	0%	3%
Azerbaijan	-17%	-18%	5%	0%	-34%
Bahrain	1%	9%	8%	0%	1%
Bangladesh	19%	-9%	-2%	0%	-23%
Belgium	-20%	-13%	-8%	0%	2%
Bermuda	4%	-1%	5%	0%	9%
Botswana	-10%	-59%	-36%	0%	-12%
Brazil	-33%	-27%	-14%	0%	3%
Brunei	41%	38%	71%	0%	-14%
Bulgaria	1%	13%	1%	0%	9%
Canada	-4%	-4%	-5%	0%	-7%
Cayman Islands	9%	1%	28%	0%	19%
China	-20%	-13%	-10%	0%	9%
Croatia	-83%	-71%	-41%	0%	44%
Cyprus (European Union)	2%	1%	1%	0%	-4%
Czech Republic	-45%	-43%	-29%	0%	31%
Denmark	-14%	-5%	-9%	0%	5%
Ecuador	-64%	-47%	13%	0%	120%
Egypt	-52%	-31%	-14%	0%	16%
Estonia	11%	23%	0%	0%	-5%
Finland	-27%	-20%	-10%	0%	1%
France	-25%	-22%	-12%	0%	7%
Germany	2%	-5%	-6%	0%	8%
Ghana	-10%	-13%	5%	0%	2%
Gibraltar	-3%	6%	2%	0%	1%
Greece	-2%	1%	1%	0%	3%
Guernsey	-5%	-7%	-5%	0%	5%
Hong Kong	-5%	-5%	4%	0%	-2%
Hungary	-33%	-8%	-7%	0%	12%
India	-24%	-14%	-4%	0%	1%
Indonesia	-42%	-23%	-15%	0%	0%
Iran	86%	16%	11%	0%	9%
Ireland	6%	4%	1%	0%	-9%
Isle of Man	12%	6%	8%	0%	6%
Israel	-16%	9%	-19%	0%	8%
Italy	-45%	-33%	-15%	0%	4%
Japan	-7%	0%	10%	0%	-6%
Jersey	9%	3%	-4%	0%	7%
Jordan	-16%	-2%	-3%	0%	-4%
Kazakhstan	1%	4%	2%	0%	-10%
Kenya	-4%	-7%	-4%	0%	-7%
Korea (South)	-12%	-8%	-10%	0%	7%
Kuwait	-24%	-25%	-13%	0%	4%

Declared country of domicile	2012	2013	2014	2015	2016
Latvia	45%	10%	5%	0%	12%
Lebanon	-33%	-22%	-6%	0%	39%
Lithuania	39%	20%	8%	0%	2%
Luxembourg	-15%	-4%	5%	0%	-1%
Macao	-42%	-46%	-31%	0%	-15%
Malaysia	-41%	-28%	-3%	0%	-9%
Malta	-7%	9%	-6%	0%	19%
Mauritius	15%	-5%	25%	0%	2%
Mexico	-26%	-14%	-15%	0%	15%
Morocco	-41%	-29%	-8%	0%	-8%
Nepal	102%	53%	41%	0%	8%
Netherlands	-17%	-12%	-8%	0%	5%
New Zealand	-24%	-17%	-4%	0%	13%
Nigeria	-4%	1%	-2%	0%	-20%
Norway	-8%	-0%	2%	0%	-24%
Oman	-46%	-35%	-18%	0%	-1%
Pakistan	-1%	-4%	-3%	0%	4%
Philippines	-36%	-25%	-21%	0%	-13%
Poland	-33%	-24%	-11%	0%	26%
Portugal	-39%	-24%	-21%	0%	17%
Qatar	-27%	-4%	-22%	0%	4%
Romania	-23%	-27%	-20%	0%	5%
Russia	-39%	-27%	-10%	0%	-19%
Saudi Arabia	-10%	-8%	-7%	0%	-2%
Serbia	-4%	36%	14%	0%	34%
Singapore	-9%	-3%	5%	0%	-11%
Slovakia	-19%	-19%	1%	0%	37%
Slovenia	-35%	-21%	-3%	0%	-1%
South Africa	-34%	-29%	-18%	0%	13%
Spain	-45%	-29%	-15%	0%	17%
Sri Lanka	43%	32%	29%	0%	0%
Sweden	4%	5%	5%	0%	-6%
Switzerland	-24%	-12%	-10%	0%	3%
Taiwan	-17%	-23%	-10%	0%	-8%
Tanzania	-13%	-3%	12%	0%	-16%
Thailand	-15%	-14%	5%	0%	0%
Trinidad and Tobago	-26%	-17%	-20%	0%	-1%
Turkey	-21%	-11%	-3%	0%	27%
Uganda	16%	26%	-5%	0%	24%
Ukraine	-17%	9%	14%	0%	-14%
United Arab Emirates	-37%	-27%	-11%	0%	5%
United States of America	-20%	-11%	-2%	0%	6%
Vietnam	43%	33%	17%	0%	-20%
Zambia	0%	9%	-8%	0%	-2%
Zimbabwe	-14%	-17%	-5%	0%	7%

F.1.12 Technical notes and definitions

Applicants have been able to submit applications for all 2016 courses since early September.

People who submit their applications to UCAS by the January deadline are considered 'on time' applicants for the large majority of courses offered through UCAS. Some art and design courses have a later deadline of 24 March. Almost all main scheme applications have been received by the 24 March deadline.

Counts of the number of applicants reported have been rounded to the nearest 10 applicants, this may result in instances where totals do not equal the sum of the components. Proportional changes have been rounded to the nearest whole percentage point.

Age

This statistical release uses country-specific age definitions which align with the cut off points for school/college cohorts within the different administrations of the UK. For England and Wales ages are defined on the 31 August, for Northern Ireland on the 1 July and for Scotland on the 28 February the following year. Defining ages in this way matches the assignment of children to school cohorts. For applicants outside of the UK the cohort cut off for England and Wales has been used.

Applicant

A person who has made an application in the UCAS system during the cycle reported (including applications for deferred entry). Records of prior acceptance (RPAs) are excluded.

Application

An application to a course at a provider made by an applicant in the UCAS main scheme. Applicants may make up to five main scheme applications.

Country of provider

An applicant may be counted once for each provider country they have applied to in the main scheme. If an applicant has applied to providers in multiple countries then the applicant is counted once within each country of provider applied to.

This statistical release excludes a small number of applications to a provider based in the EU.

Domicile

Declared area of permanent residence. The Channel Islands and the Isle of Man have been assigned as 'Not EU'.

First time applicant

An applicant that did not apply to the UCAS scheme in the previous cycle.

Main scheme

The main UCAS application scheme through which up to five providers/courses can be applied to. This opens in September and closes to new applications on 30 June the following year.

Reapplicant

An applicant that applied to the UCAS scheme in the previous cycle.

Subject group

The JACS3 classification used to classify courses into subject groups.

The values reported against subject groups in the 2015 cycle have been restated from those which appeared in the equivalent report in 2015.

Tariff group of provider

Providers are grouped as higher, medium or lower tariff based on their average levels of attainment of their accepted applicants (summarised through UCAS Tariff points) in recent cycles. Each group of providers accounted for around a third of all UK 18 year old acceptances in recent cycles.