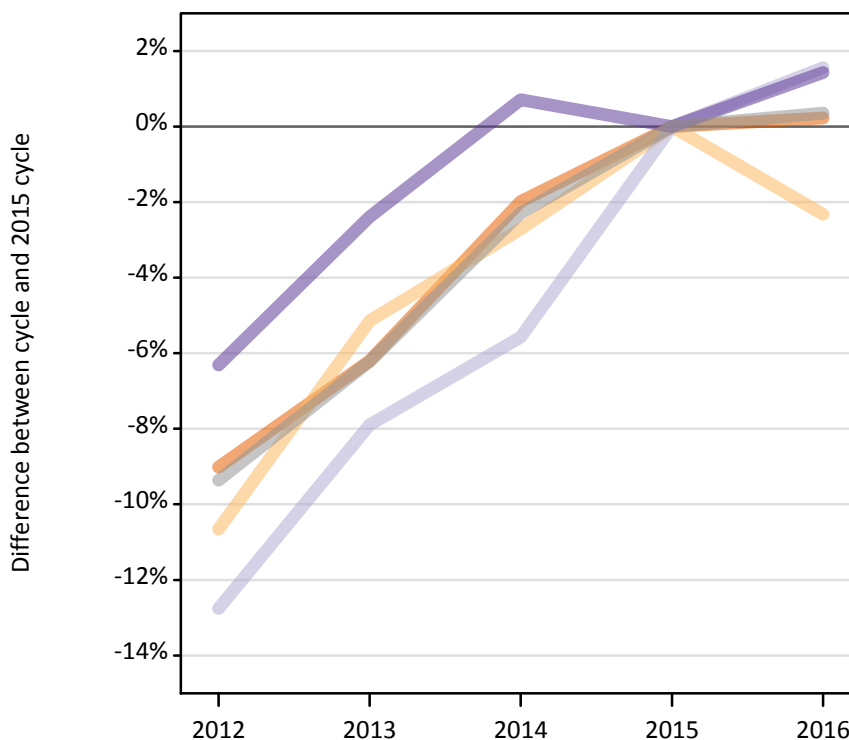
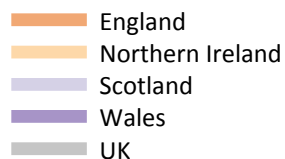


## Applications by country and type of provider at the 15 January deadline

### D.5.1 Applications by domicile and country of provider : All domiciles

Difference between cycle and 2015 cycle



### D.5.2 Applications by domicile and country of provider : All domiciles

Domicile of applicant and country of provider		2012	2013	2014	2015	2016
All domiciles	England	1,975,000	2,036,020	2,127,670	2,170,680	2,175,610
	Northern Ireland	55,690	59,120	60,640	62,330	60,880
	Scotland	246,680	260,440	266,990	282,760	287,180
	Wales	91,200	95,020	98,040	97,350	98,740
	UK	2,368,570	2,450,590	2,553,340	2,613,120	2,622,410

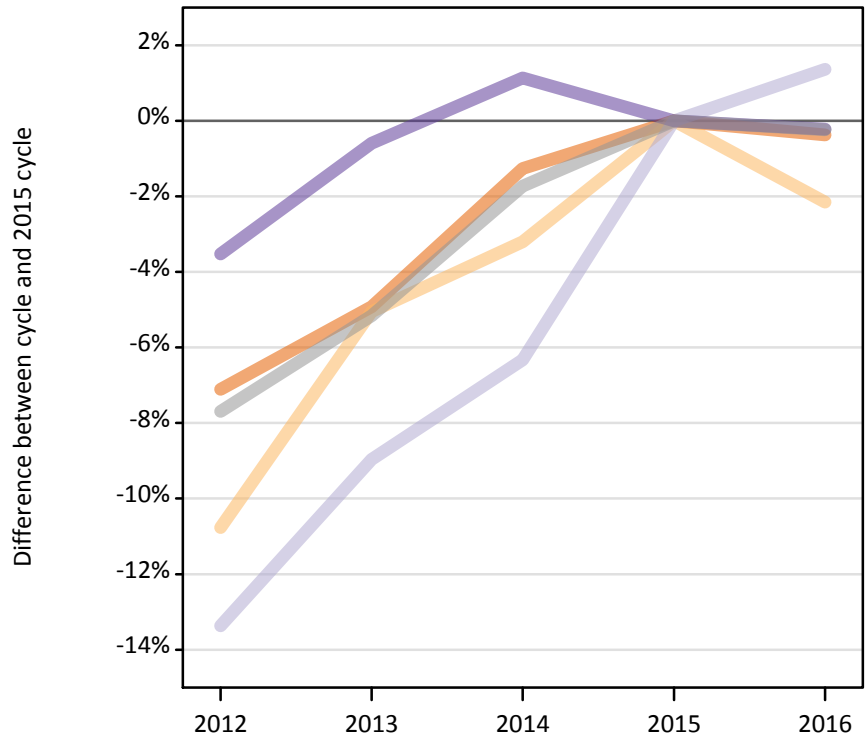
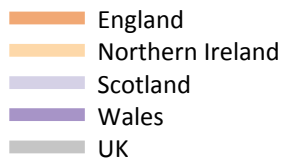
### D.5.3 Applications by domicile and country of provider : All domiciles

Difference between cycle and 2015 cycle

Domicile of applicant and country of provider		2012	2013	2014	2015	2016
All domiciles	England	-9%	-6%	-2%	0%	0%
	Northern Ireland	-11%	-5%	-3%	0%	-2%
	Scotland	-13%	-8%	-6%	0%	2%
	Wales	-6%	-2%	1%	0%	1%
	UK	-9%	-6%	-2%	0%	0%

#### D.5.4 Applications by domicile and country of provider : UK

Difference between cycle and 2015 cycle



#### D.5.5 Applications by domicile and country of provider : UK

Domicile of applicant and country of provider		2012	2013	2014	2015	2016
UK	England	1,695,680	1,735,650	1,802,440	1,825,450	1,818,660
	Northern Ireland	51,800	55,120	56,190	58,050	56,800
	Scotland	191,230	200,940	206,760	220,730	223,730
	Wales	83,350	85,880	87,380	86,390	86,200
	UK	2,022,060	2,077,580	2,152,760	2,190,610	2,185,390

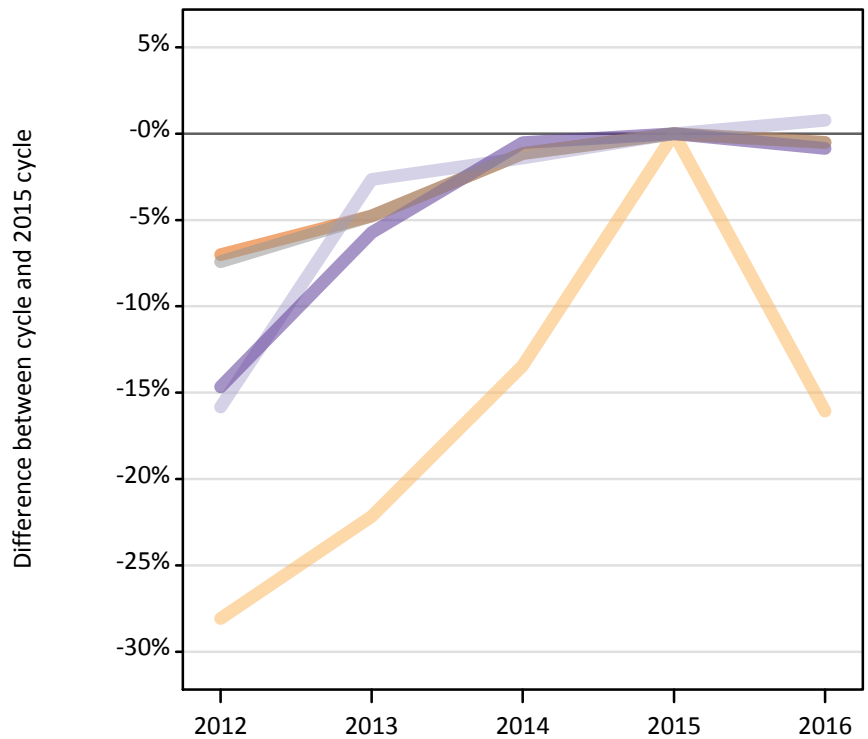
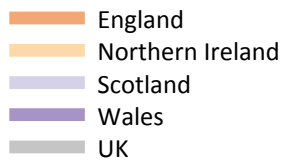
#### D.5.6 Applications by domicile and country of provider : UK

Difference between cycle and 2015 cycle

Domicile of applicant and country of provider		2012	2013	2014	2015	2016
UK	England	-7%	-5%	-1%	0%	-0%
	Northern Ireland	-11%	-5%	-3%	0%	-2%
	Scotland	-13%	-9%	-6%	0%	1%
	Wales	-4%	-1%	1%	0%	-0%
	UK	-8%	-5%	-2%	0%	-0%

### D.5.7 Applications by domicile and country of provider : England

Difference between cycle and 2015 cycle



### D.5.8 Applications by domicile and country of provider : England

Domicile of applicant and country of provider		2012	2013	2014	2015	2016
England	England	1,616,210	1,655,250	1,718,100	1,738,000	1,729,150
	Northern Ireland	2,160	2,340	2,600	3,010	2,520
	Scotland	30,420	35,190	35,630	36,140	36,420
	Wales	42,290	46,720	49,300	49,560	49,130
	UK	1,691,080	1,739,490	1,805,630	1,826,710	1,817,220

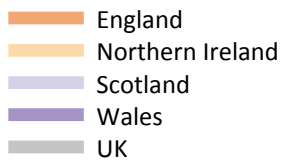
### D.5.9 Applications by domicile and country of provider : England

Difference between cycle and 2015 cycle

Domicile of applicant and country of provider		2012	2013	2014	2015	2016
England	England	-7%	-5%	-1%	0%	-1%
	Northern Ireland	-28%	-22%	-13%	0%	-16%
	Scotland	-16%	-3%	-1%	0%	1%
	Wales	-15%	-6%	-1%	0%	-1%
	UK	-7%	-5%	-1%	0%	-1%

### D.5.10 Applications by domicile and country of provider : Northern Ireland

Difference between cycle and 2015 cycle



### D.5.11 Applications by domicile and country of provider : Northern Ireland

Domicile of applicant and country of provider		2012	2013	2014	2015	2016
Northern Ireland	England	23,870	24,820	25,260	26,020	27,730
	Northern Ireland	49,360	52,510	53,360	54,720	53,950
	Scotland	8,330	9,900	8,600	8,680	9,000
	Wales	1,060	1,270	1,160	1,140	1,380
	UK	82,610	88,500	88,370	90,550	92,060

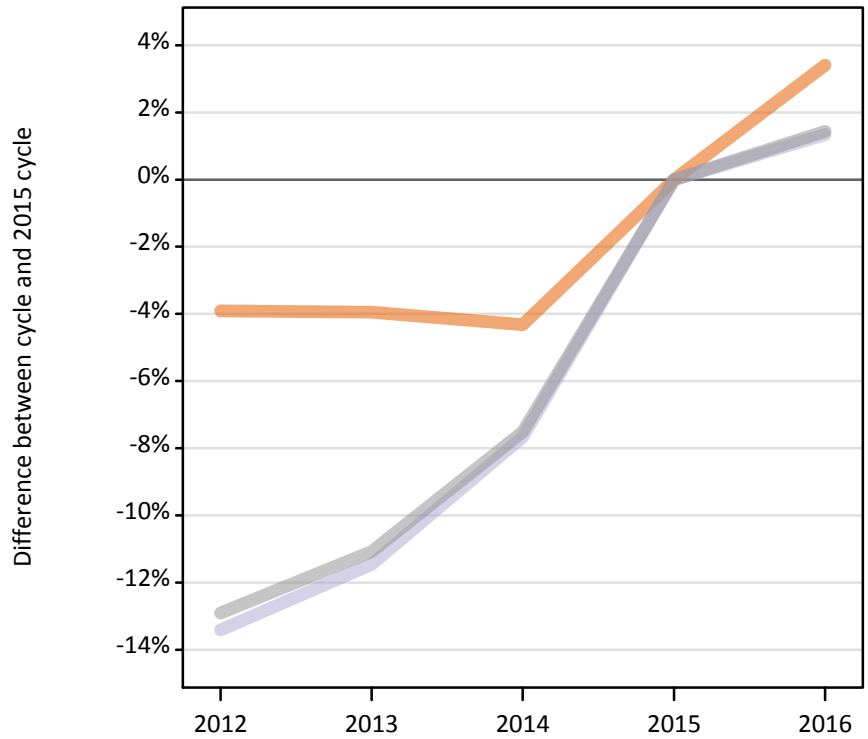
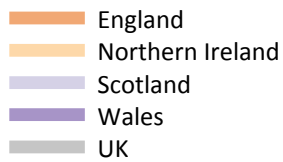
### D.5.12 Applications by domicile and country of provider : Northern Ireland

Difference between cycle and 2015 cycle

Domicile of applicant and country of provider		2012	2013	2014	2015	2016
Northern Ireland	England	-8%	-5%	-3%	0%	7%
	Northern Ireland	-10%	-4%	-2%	0%	-1%
	Scotland	-4%	14%	-1%	0%	4%
	Wales	-7%	12%	1%	0%	21%
	UK	-9%	-2%	-2%	0%	2%

### D.5.13 Applications by domicile and country of provider : Scotland

Difference between cycle and 2015 cycle



### D.5.14 Applications by domicile and country of provider : Scotland

Domicile of applicant and country of provider		2012	2013	2014	2015	2016
Scotland	England	8,950	8,940	8,910	9,310	9,630
	Northern Ireland	190	190	140	220	220
	Scotland	151,430	154,830	161,480	174,880	177,220
	Wales	230	210	220	220	210
	UK	160,790	164,170	170,750	184,630	187,270

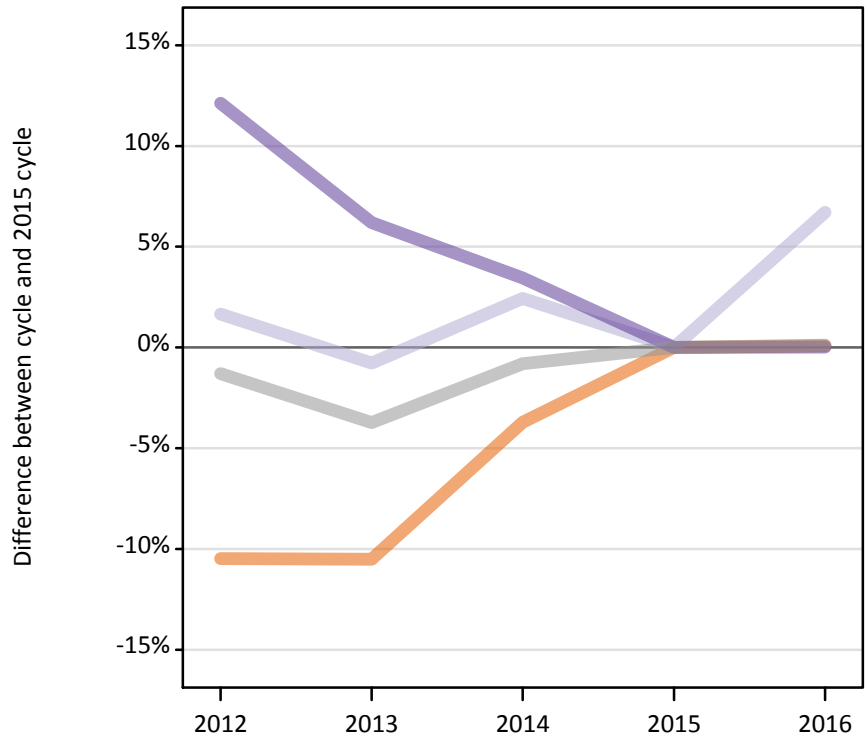
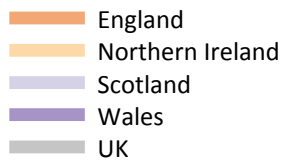
### D.5.15 Applications by domicile and country of provider : Scotland

Difference between cycle and 2015 cycle

Domicile of applicant and country of provider		2012	2013	2014	2015	2016
Scotland	England	-4%	-4%	-4%	0%	3%
	Northern Ireland	-12%	-15%	-36%	0%	2%
	Scotland	-13%	-11%	-8%	0%	1%
	Wales	3%	-3%	0%	0%	-5%
	UK	-13%	-11%	-8%	0%	1%

### D.5.16 Applications by domicile and country of provider : Wales

Difference between cycle and 2015 cycle



### D.5.17 Applications by domicile and country of provider : Wales

Domicile of applicant and country of provider		2012	2013	2014	2015	2016
Wales	England	46,660	46,640	50,180	52,120	52,160
	Northern Ireland	90	90	90	110	100
	Scotland	1,050	1,020	1,050	1,030	1,100
	Wales	39,780	37,680	36,700	35,480	35,480
	UK	87,580	85,420	88,020	88,730	88,840

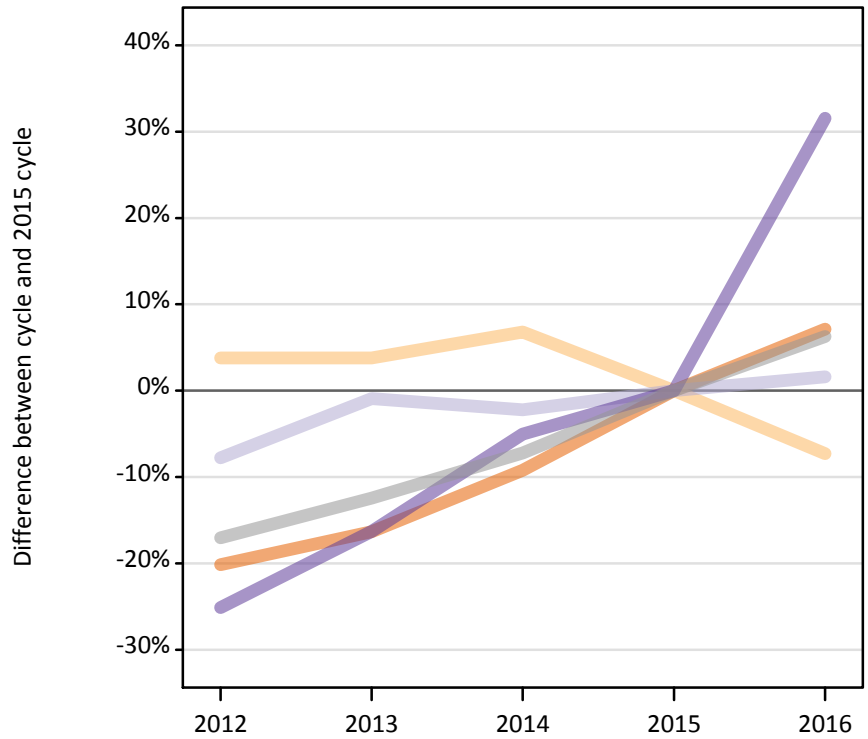
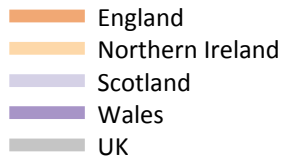
### D.5.18 Applications by domicile and country of provider : Wales

Difference between cycle and 2015 cycle

Domicile of applicant and country of provider		2012	2013	2014	2015	2016
Wales	England	-10%	-11%	-4%	0%	0%
	Northern Ireland	-17%	-20%	-17%	0%	-6%
	Scotland	2%	-1%	2%	0%	7%
	Wales	12%	6%	3%	0%	0%
	UK	-1%	-4%	-1%	0%	0%

### D.5.19 Applications by domicile and country of provider : EU (excluding UK)

Difference between cycle and 2015 cycle



### D.5.20 Applications by domicile and country of provider : EU (excluding UK)

Domicile of applicant and country of provider		2012	2013	2014	2015	2016
EU (excluding UK)	England	110,520	115,790	125,650	138,400	148,280
	Northern Ireland	3,280	3,280	3,370	3,160	2,930
	Scotland	40,330	43,340	42,770	43,740	44,430
	Wales	3,770	4,210	4,780	5,030	6,620
	UK	157,890	166,620	176,560	190,330	202,250

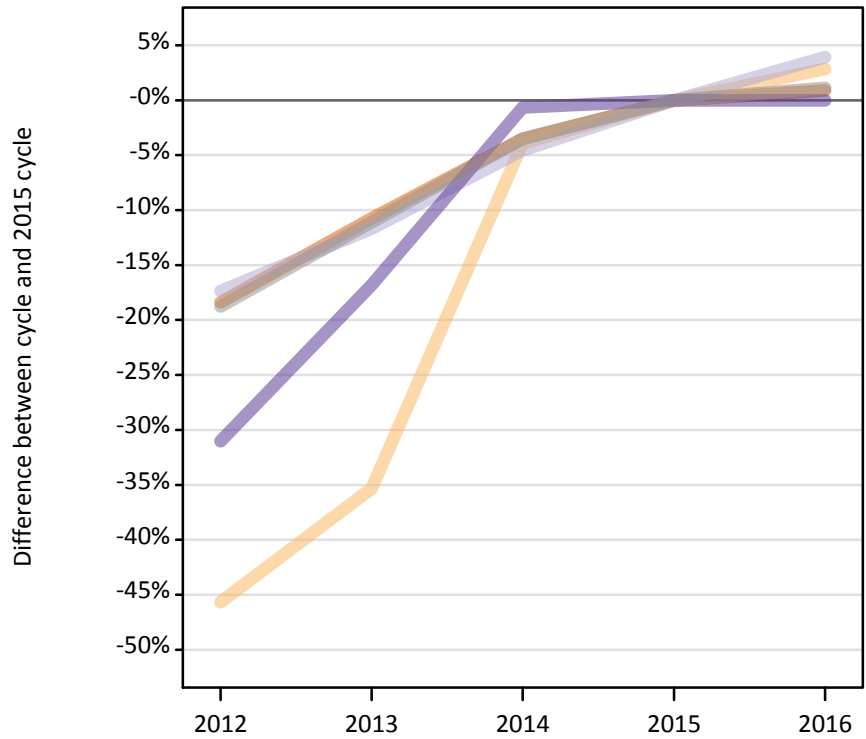
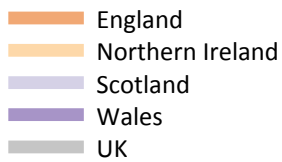
### D.5.21 Applications by domicile and country of provider : EU (excluding UK)

Difference between cycle and 2015 cycle

Domicile of applicant and country of provider		2012	2013	2014	2015	2016
EU (excluding UK)	England	-20%	-16%	-9%	0%	7%
	Northern Ireland	4%	4%	7%	0%	-7%
	Scotland	-8%	-1%	-2%	0%	2%
	Wales	-25%	-16%	-5%	0%	32%
	UK	-17%	-12%	-7%	0%	6%

### D.5.22 Applications by domicile and country of provider : Not EU

Difference between cycle and 2015 cycle



### D.5.23 Applications by domicile and country of provider : Not EU

Domicile of applicant and country of provider		2012	2013	2014	2015	2016
Not EU	England	168,800	184,580	199,580	206,840	208,680
	Northern Ireland	610	730	1,080	1,120	1,150
	Scotland	15,120	16,160	17,460	18,300	19,010
	Wales	4,090	4,930	5,890	5,920	5,920
	UK	188,620	206,390	224,010	232,180	234,770

### D.5.24 Applications by domicile and country of provider : Not EU

Difference between cycle and 2015 cycle

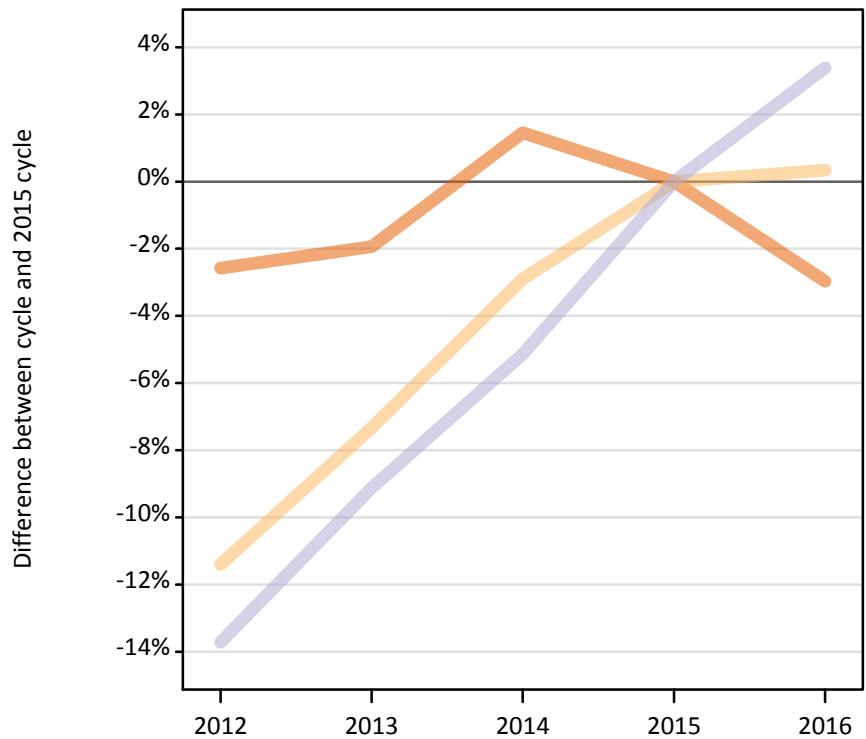
Domicile of applicant and country of provider		2012	2013	2014	2015	2016
Not EU	England	-18%	-11%	-4%	0%	1%
	Northern Ireland	-46%	-35%	-4%	0%	3%
	Scotland	-17%	-12%	-5%	0%	4%
	Wales	-31%	-17%	-1%	0%	0%
	UK	-19%	-11%	-4%	0%	1%



### D.5.25 Applications by domicile and tariff group of provider : All domiciles

Difference between cycle and 2015 cycle

- 1. Lower tariff
- 2. Medium tariff
- 3. Higher tariff



### D.5.26 Applications by domicile and tariff group of provider : All domiciles

Domicile of applicant and tariff group of provider		2012	2013	2014	2015	2016
All domiciles	1. Lower tariff	828,870	834,350	863,180	850,820	825,550
	2. Medium tariff	729,650	763,120	799,630	823,520	826,280
	3. Higher tariff	810,050	853,120	890,530	938,780	970,570
	All	2,368,570	2,450,590	2,553,340	2,613,120	2,622,410

### D.5.27 Applications by domicile and tariff group of provider : All domiciles

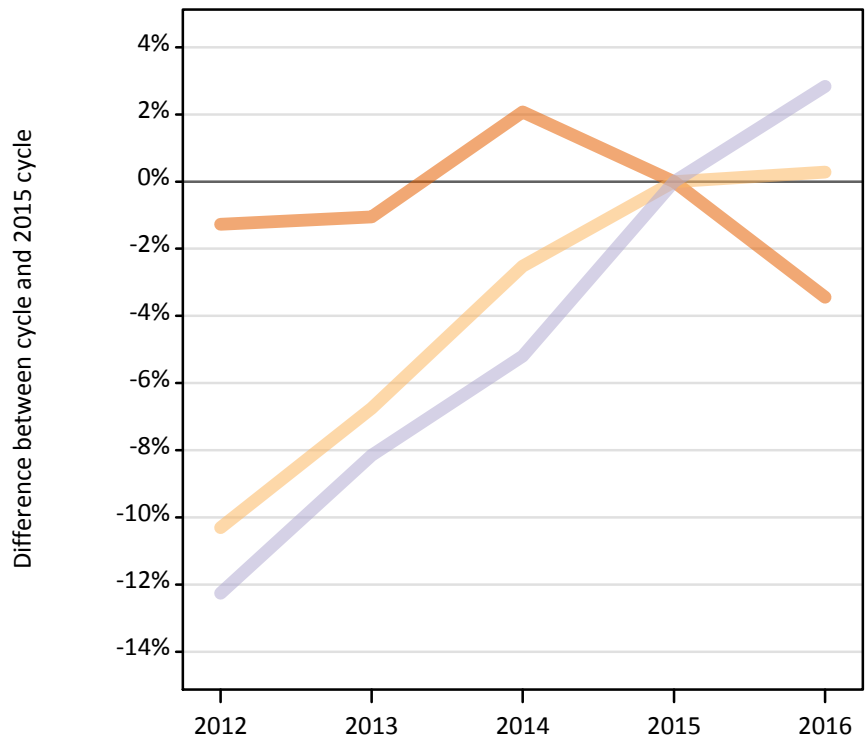
Difference between cycle and 2015 cycle

Domicile of applicant and tariff group of provider		2012	2013	2014	2015	2016
All domiciles	1. Lower tariff	-3%	-2%	1%	0%	-3%
	2. Medium tariff	-11%	-7%	-3%	0%	0%
	3. Higher tariff	-14%	-9%	-5%	0%	3%
	All	-9%	-6%	-2%	0%	0%

### D.5.28 Applications by domicile and tariff group of provider : UK

Difference between cycle and 2015 cycle

- 1. Lower tariff
- 2. Medium tariff
- 3. Higher tariff



### D.5.29 Applications by domicile and tariff group of provider : UK

Domicile of applicant and tariff group of provider		2012	2013	2014	2015	2016
UK	1. Lower tariff	772,920	774,580	799,070	782,840	755,910
	2. Medium tariff	640,270	665,650	695,820	713,810	715,840
	3. Higher tariff	608,880	637,360	657,880	693,960	713,640
	All	2,022,060	2,077,580	2,152,760	2,190,610	2,185,390

### D.5.30 Applications by domicile and tariff group of provider : UK

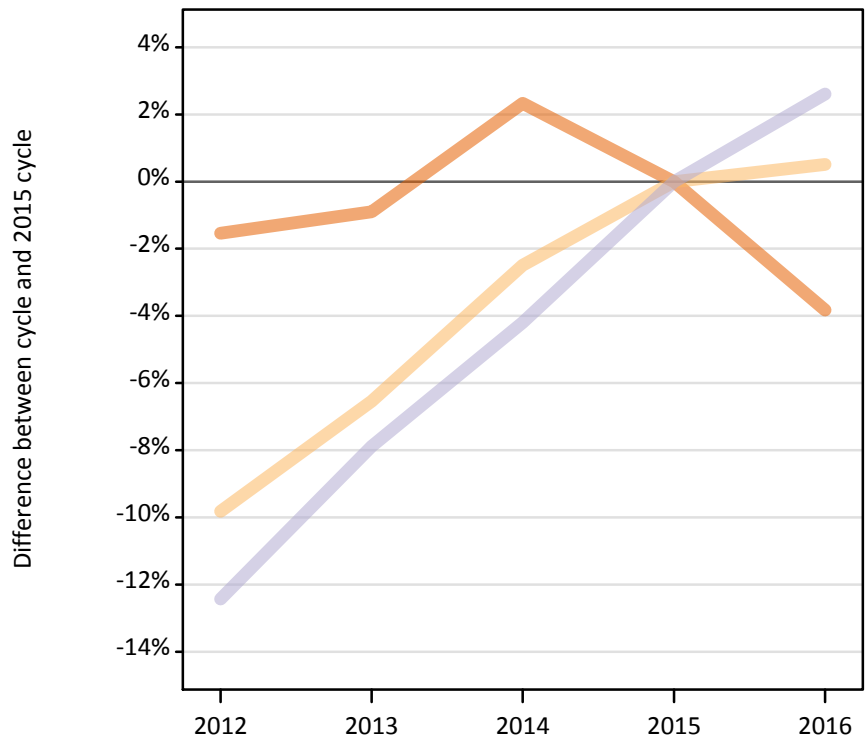
Difference between cycle and 2015 cycle

Domicile of applicant and tariff group of provider		2012	2013	2014	2015	2016
UK	1. Lower tariff	-1%	-1%	2%	0%	-3%
	2. Medium tariff	-10%	-7%	-3%	0%	0%
	3. Higher tariff	-12%	-8%	-5%	0%	3%
	All	-8%	-5%	-2%	0%	-0%

### D.5.31 Applications by domicile and tariff group of provider : England

Difference between cycle and 2015 cycle

- 1. Lower tariff
- 2. Medium tariff
- 3. Higher tariff



### D.5.32 Applications by domicile and tariff group of provider : England

Domicile of applicant and tariff group of provider		2012	2013	2014	2015	2016
England	1. Lower tariff	692,820	697,330	720,040	703,630	676,740
	2. Medium tariff	511,210	529,820	552,740	566,880	569,800
	3. Higher tariff	487,060	512,340	532,850	556,190	570,690
	All	1,691,080	1,739,490	1,805,630	1,826,710	1,817,220

### D.5.33 Applications by domicile and tariff group of provider : England

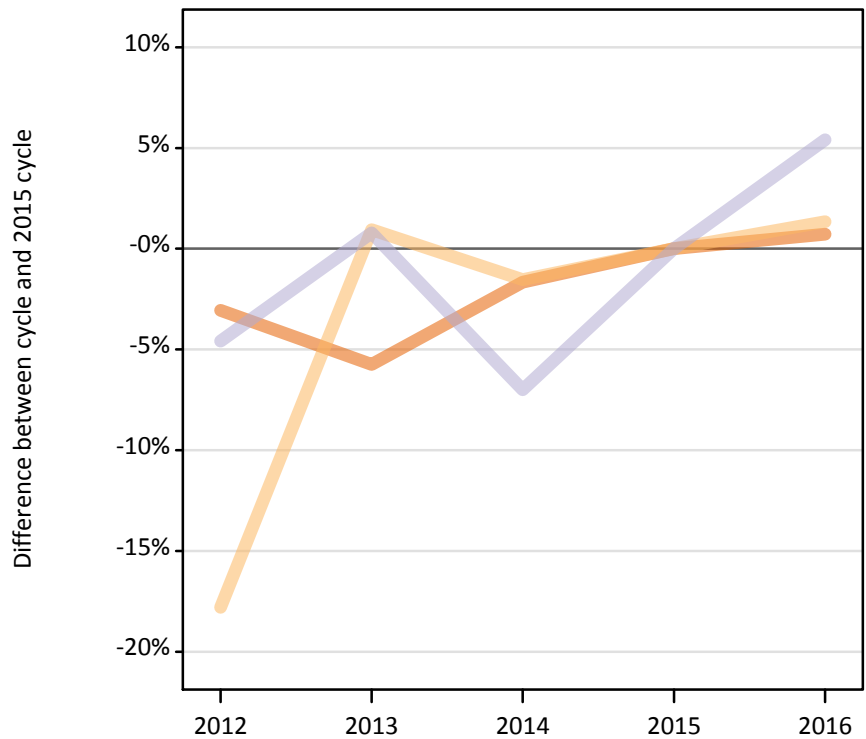
Difference between cycle and 2015 cycle

Domicile of applicant and tariff group of provider		2012	2013	2014	2015	2016
England	1. Lower tariff	-2%	-1%	2%	0%	-4%
	2. Medium tariff	-10%	-7%	-2%	0%	1%
	3. Higher tariff	-12%	-8%	-4%	0%	3%
	All	-7%	-5%	-1%	0%	-1%

### D.5.34 Applications by domicile and tariff group of provider : Northern Ireland

Difference between cycle and 2015 cycle

- 1. Lower tariff
- 2. Medium tariff
- 3. Higher tariff



### D.5.35 Applications by domicile and tariff group of provider : Northern Ireland

Domicile of applicant and tariff group of provider		2012	2013	2014	2015	2016
Northern Ireland	1. Lower tariff	41,860	40,700	42,470	43,180	43,490
	2. Medium tariff	27,700	34,010	33,180	33,690	34,140
	3. Higher tariff	13,060	13,790	12,730	13,680	14,420
	All	82,610	88,500	88,370	90,550	92,060

### D.5.36 Applications by domicile and tariff group of provider : Northern Ireland

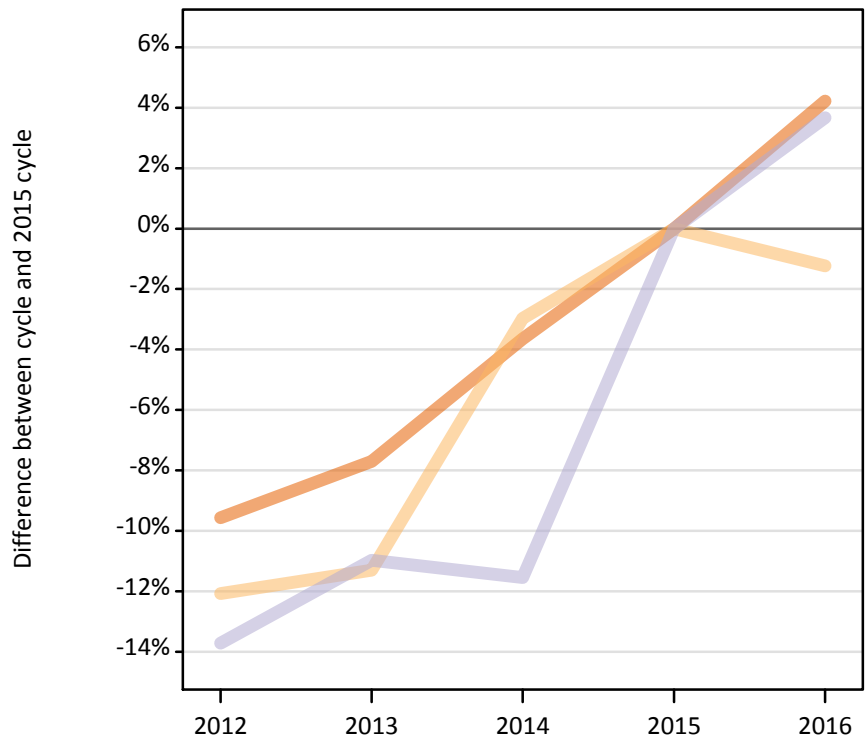
Difference between cycle and 2015 cycle

Domicile of applicant and tariff group of provider		2012	2013	2014	2015	2016
Northern Ireland	1. Lower tariff	-3%	-6%	-2%	0%	1%
	2. Medium tariff	-18%	1%	-2%	0%	1%
	3. Higher tariff	-5%	1%	-7%	0%	5%
	All	-9%	-2%	-2%	0%	2%

### D.5.37 Applications by domicile and tariff group of provider : Scotland

Difference between cycle and 2015 cycle

- 1. Lower tariff
- 2. Medium tariff
- 3. Higher tariff



### D.5.38 Applications by domicile and tariff group of provider : Scotland

Domicile of applicant and tariff group of provider		2012	2013	2014	2015	2016
Scotland	1. Lower tariff	2,230	2,280	2,380	2,470	2,570
	2. Medium tariff	74,280	74,930	81,970	84,480	83,440
	3. Higher tariff	84,280	86,960	86,400	97,670	101,260
	All	160,790	164,170	170,750	184,630	187,270

### D.5.39 Applications by domicile and tariff group of provider : Scotland

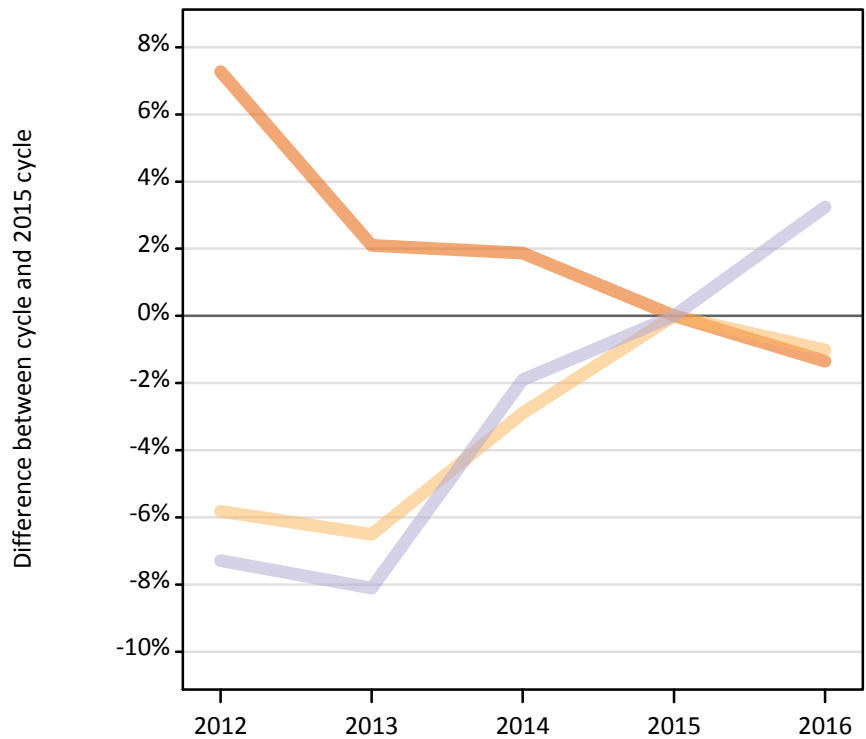
Difference between cycle and 2015 cycle

Domicile of applicant and tariff group of provider		2012	2013	2014	2015	2016
Scotland	1. Lower tariff	-10%	-8%	-4%	0%	4%
	2. Medium tariff	-12%	-11%	-3%	0%	-1%
	3. Higher tariff	-14%	-11%	-12%	0%	4%
	All	-13%	-11%	-8%	0%	1%

### D.5.40 Applications by domicile and tariff group of provider : Wales

Difference between cycle and 2015 cycle

- 1. Lower tariff
- 2. Medium tariff
- 3. Higher tariff



### D.5.41 Applications by domicile and tariff group of provider : Wales

Domicile of applicant and tariff group of provider		2012	2013	2014	2015	2016
Wales	1. Lower tariff	36,010	34,270	34,190	33,570	33,110
	2. Medium tariff	27,080	26,880	27,920	28,760	28,460
	3. Higher tariff	24,490	24,270	25,910	26,410	27,270
	All	87,580	85,420	88,020	88,730	88,840

### D.5.42 Applications by domicile and tariff group of provider : Wales

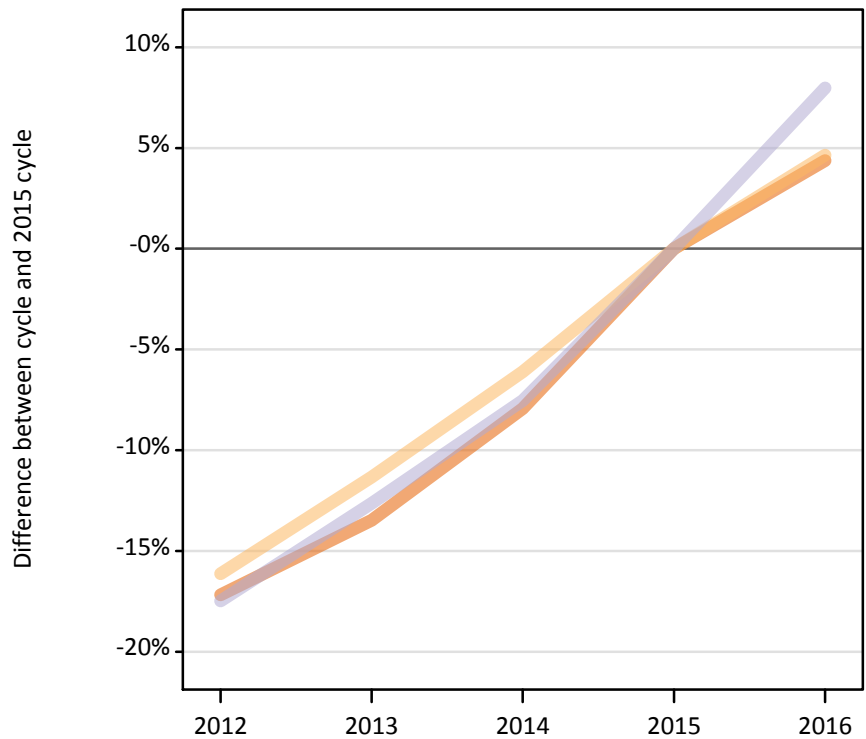
Difference between cycle and 2015 cycle

Domicile of applicant and tariff group of provider		2012	2013	2014	2015	2016
Wales	1. Lower tariff	7%	2%	2%	0%	-1%
	2. Medium tariff	-6%	-7%	-3%	0%	-1%
	3. Higher tariff	-7%	-8%	-2%	0%	3%
	All	-1%	-4%	-1%	0%	0%

### D.5.43 Applications by domicile and tariff group of provider : EU (excluding UK)

Difference between cycle and 2015 cycle

- 1. Lower tariff
- 2. Medium tariff
- 3. Higher tariff



### D.5.44 Applications by domicile and tariff group of provider : EU (excluding UK)

Domicile of applicant and tariff group of provider		2012	2013	2014	2015	2016
EU (excluding UK)	1. Lower tariff	34,740	36,290	38,610	41,940	43,780
	2. Medium tariff	43,930	46,450	49,180	52,380	54,810
	3. Higher tariff	79,220	83,880	88,770	96,010	103,660
	All	157,890	166,620	176,560	190,330	202,250

### D.5.45 Applications by domicile and tariff group of provider : EU (excluding UK)

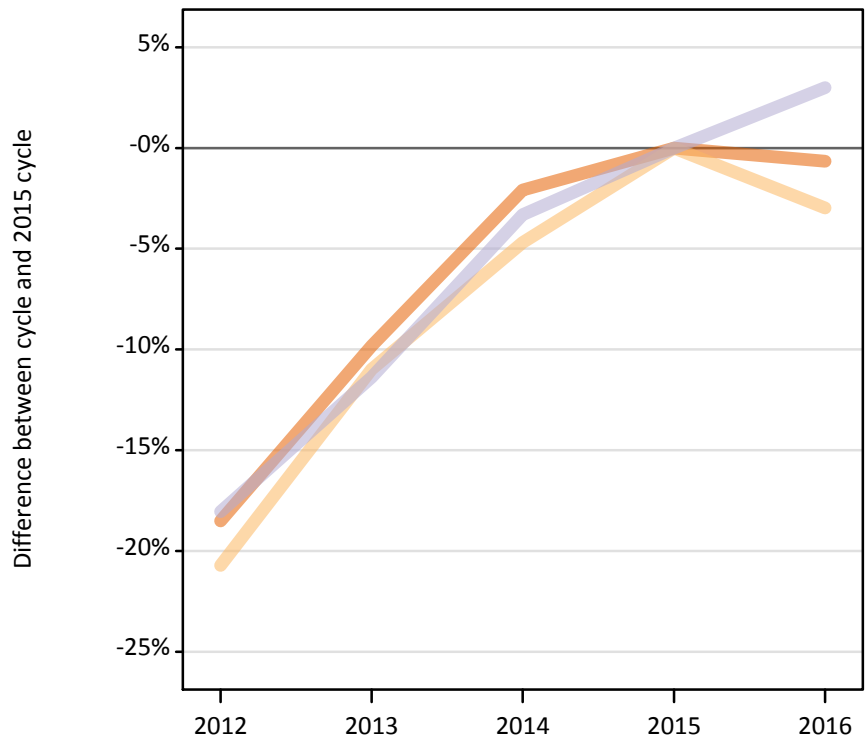
Difference between cycle and 2015 cycle

Domicile of applicant and tariff group of provider		2012	2013	2014	2015	2016
EU (excluding UK)	1. Lower tariff	-17%	-13%	-8%	0%	4%
	2. Medium tariff	-16%	-11%	-6%	0%	5%
	3. Higher tariff	-17%	-13%	-8%	0%	8%
	All	-17%	-12%	-7%	0%	6%

### D.5.46 Applications by domicile and tariff group of provider : Not EU

Difference between cycle and 2015 cycle

- 1. Lower tariff
- 2. Medium tariff
- 3. Higher tariff



### D.5.47 Applications by domicile and tariff group of provider : Not EU

Domicile of applicant and tariff group of provider		2012	2013	2014	2015	2016
Not EU	1. Lower tariff	21,220	23,480	25,490	26,040	25,870
	2. Medium tariff	45,450	51,030	54,640	57,330	55,630
	3. Higher tariff	121,950	131,880	143,880	148,810	153,270
	All	188,620	206,390	224,010	232,180	234,770

### D.5.48 Applications by domicile and tariff group of provider : Not EU

Difference between cycle and 2015 cycle

Domicile of applicant and tariff group of provider		2012	2013	2014	2015	2016
Not EU	1. Lower tariff	-19%	-10%	-2%	0%	-1%
	2. Medium tariff	-21%	-11%	-5%	0%	-3%
	3. Higher tariff	-18%	-11%	-3%	0%	3%
	All	-19%	-11%	-4%	0%	1%



## D.5.49 Technical notes and definitions

Applicants have been able to submit applications for all 2016 courses since early September.

Applicants who submit their applications to UCAS by the January deadline are considered as 'on time' applicants for the large majority of courses offered through UCAS.

This statistical release covers all Main Scheme applicants who submit their applications to UCAS by the January deadline, including those who have applied for courses with a 15 October deadline. Counts of RPAs (records of prior acceptance) are not included.

Counts of the number of applicants reported have been rounded to the nearest 10 applicants, this may result in instances where totals do not equal the sum of the components. Proportional changes have been rounded to the nearest whole percentage point.

The values reported against subject groups in the 2015 cycle have been restated from those which appeared in the equivalent report in 2015.

### Age

This statistical release uses country-specific age definitions which align with the cut off points for school/college cohorts within the different administrations of the UK. For England and Wales ages are defined on the 31 August, for Northern Ireland on the 1 July and for Scotland on the 28 February the following year. Defining ages in this way matches the assignment of children to school cohorts. For applicants outside of the UK the cohort cut off for England and Wales has been used.

### Applicant

A person who has made an application in the UCAS system during the cycle reported (including applications for deferred entry). Records of prior acceptance (RPAs) are excluded.

### Application

An application to a course at a provider made by an applicant in the UCAS main scheme. Applicants may make up to five main scheme applications.

### Country of provider

An applicant may be counted once for each provider country they have applied to in the main scheme. If an applicant has applied to providers in multiple countries then the applicant is counted once within each country of provider applied to.

This statistical release excludes a small number of applications to a provider based in the EU.

### Domicile

Declared area of permanent residence. The Channel Islands and the Isle of Man have been assigned as 'Not EU'.

### First time applicant

An applicant that did not apply to the UCAS scheme in the previous cycle.

### Main scheme

The main UCAS application scheme through which up to five providers/courses can be applied to. This opens in September and closes to new applications on 30 June the following year.

### Reapplicant

An applicant that applied to the UCAS scheme in the previous cycle.

## **D.5.50 Technical notes and definitions: continued**

### **Subject group**

The JACS3 classification used to classify courses into subject groups.

### **Tariff group of provider**

Providers are grouped as higher, medium or lower tariff based on their average levels of attainment of their accepted applicants (summarised through UCAS Tariff points) in recent cycles. Each group of providers accounted for around a third of all UK 18 year old acceptances in recent cycles.