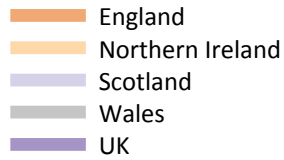


## Applications by country and type of institution at the 24 March deadline

### F.5.1 Applications by domicile and country of institution : All domiciles

Difference between cycle and 2013 cycle



### F.5.2 Applications by domicile and country of institution : All domiciles

Domicile of applicant and country of institution		2010	2011	2012	2013	2014
All domiciles	England	2,169,320	2,281,750	2,090,500	2,135,400	2,235,340
	Northern Ireland	55,010	55,880	57,350	60,310	62,070
	Scotland	240,570	249,270	257,300	268,890	276,030
	Wales	103,870	106,440	96,460	99,500	103,370
	UK	2,568,760	2,693,340	2,501,610	2,564,110	2,676,810

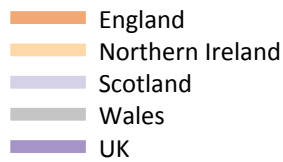
### F.5.3 Applications by domicile and country of institution : All domiciles

Difference between cycle and 2013 cycle

Domicile of applicant and country of institution		2010	2011	2012	2013	2014
All domiciles	England	2%	7%	-2%	0%	5%
	Northern Ireland	-9%	-7%	-5%	0%	3%
	Scotland	-11%	-7%	-4%	0%	3%
	Wales	4%	7%	-3%	0%	4%
	UK	0%	5%	-2%	0%	4%

#### F.5.4 Applications by domicile and country of institution : UK

Difference between cycle and 2013 cycle



#### F.5.5 Applications by domicile and country of institution : UK

Domicile of applicant and country of institution		2010	2011	2012	2013	2014
UK	England	1,872,820	1,960,500	1,776,420	1,804,270	1,874,210
	Northern Ireland	49,890	51,290	53,130	56,050	57,310
	Scotland	196,090	199,050	197,960	206,030	212,130
	Wales	93,700	96,500	87,020	88,900	90,470
	UK	2,212,500	2,307,330	2,114,520	2,155,250	2,234,120

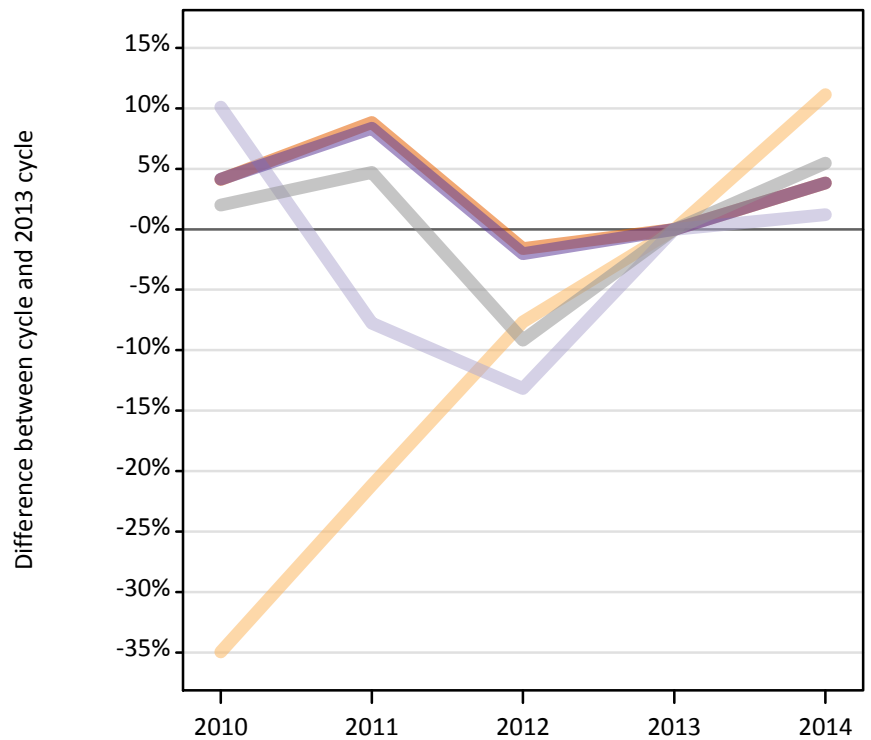
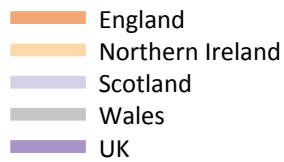
#### F.5.6 Applications by domicile and country of institution : UK

Difference between cycle and 2013 cycle

Domicile of applicant and country of institution		2010	2011	2012	2013	2014
UK	England	4%	9%	-2%	0%	4%
	Northern Ireland	-11%	-8%	-5%	0%	2%
	Scotland	-5%	-3%	-4%	0%	3%
	Wales	5%	9%	-2%	0%	2%
	UK	3%	7%	-2%	0%	4%

### F.5.7 Applications by domicile and country of institution : England

Difference between cycle and 2013 cycle



### F.5.8 Applications by domicile and country of institution : England

Domicile of applicant and country of institution		2010	2011	2012	2013	2014
England	England	1,792,860	1,873,830	1,694,450	1,721,870	1,787,730
	Northern Ireland	1,560	1,890	2,220	2,400	2,670
	Scotland	39,310	32,930	30,990	35,700	36,130
	Wales	48,670	49,960	43,340	47,720	50,320
	UK	1,882,390	1,958,610	1,771,000	1,807,680	1,876,840

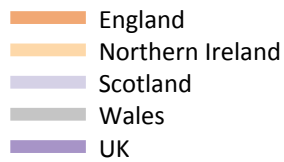
### F.5.9 Applications by domicile and country of institution : England

Difference between cycle and 2013 cycle

Domicile of applicant and country of institution		2010	2011	2012	2013	2014
England	England	4%	9%	-2%	0%	4%
	Northern Ireland	-35%	-21%	-8%	0%	11%
	Scotland	10%	-8%	-13%	0%	1%
	Wales	2%	5%	-9%	0%	5%
	UK	4%	8%	-2%	0%	4%

### F.5.10 Applications by domicile and country of institution : Northern Ireland

Difference between cycle and 2013 cycle



### F.5.11 Applications by domicile and country of institution : Northern Ireland

Domicile of applicant and country of institution		2010	2011	2012	2013	2014
Northern Ireland	England	24,610	28,680	24,540	25,260	25,730
	Northern Ireland	48,050	49,110	50,620	53,370	54,420
	Scotland	10,180	10,300	8,470	10,010	8,690
	Wales	1,150	1,310	1,090	1,300	1,180
	UK	83,980	89,400	84,710	89,930	90,010

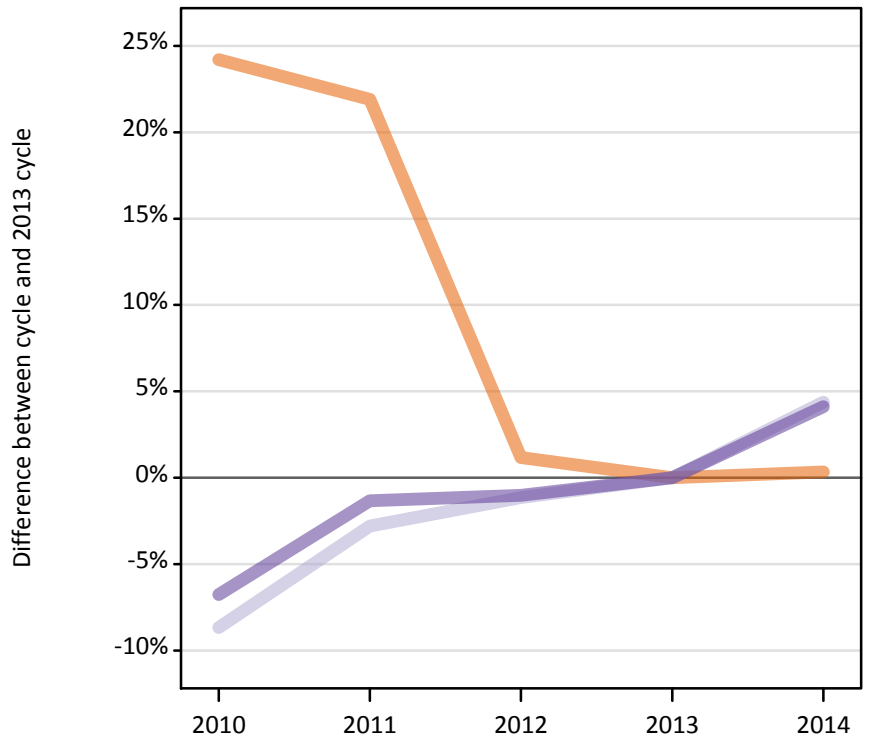
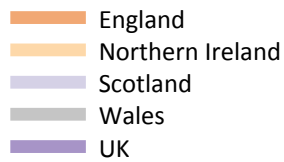
### F.5.12 Applications by domicile and country of institution : Northern Ireland

Difference between cycle and 2013 cycle

Domicile of applicant and country of institution		2010	2011	2012	2013	2014
Northern Ireland	England	-3%	14%	-3%	0%	2%
	Northern Ireland	-10%	-8%	-5%	0%	2%
	Scotland	2%	3%	-15%	0%	-13%
	Wales	-11%	1%	-16%	0%	-9%
	UK	-7%	-1%	-6%	0%	0%

### F.5.13 Applications by domicile and country of institution : Scotland

Difference between cycle and 2013 cycle



### F.5.14 Applications by domicile and country of institution : Scotland

Domicile of applicant and country of institution		2010	2011	2012	2013	2014
Scotland	England	11,500	11,290	9,370	9,260	9,290
	Northern Ireland	200	210	200	200	140
	Scotland	145,460	154,820	157,420	159,260	166,240
	Wales	370	370	240	220	230
	UK	157,530	166,690	167,240	168,940	175,900

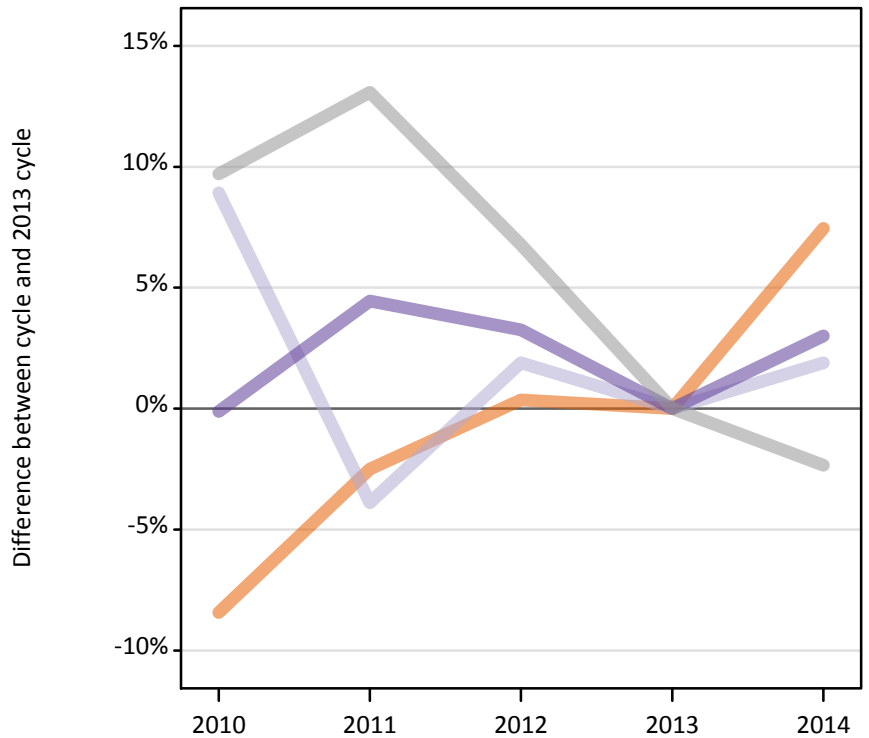
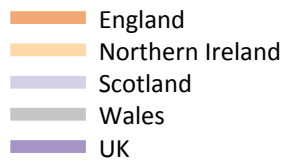
### F.5.15 Applications by domicile and country of institution : Scotland

Difference between cycle and 2013 cycle

Domicile of applicant and country of institution		2010	2011	2012	2013	2014
Scotland	England	24%	22%	1%	0%	0%
	Northern Ireland	3%	8%	3%	0%	-28%
	Scotland	-9%	-3%	-1%	0%	4%
	Wales	66%	65%	8%	0%	4%
	UK	-7%	-1%	-1%	0%	4%

### F.5.16 Applications by domicile and country of institution : Wales

Difference between cycle and 2013 cycle



### F.5.17 Applications by domicile and country of institution : Wales

Domicile of applicant and country of institution		2010	2011	2012	2013	2014
Wales	England	43,860	46,690	48,070	47,890	51,460
	Northern Ireland	70	80	90	90	90
	Scotland	1,150	1,010	1,070	1,050	1,070
	Wales	43,520	44,850	42,350	39,660	38,740
	UK	88,590	92,640	91,580	88,690	91,360

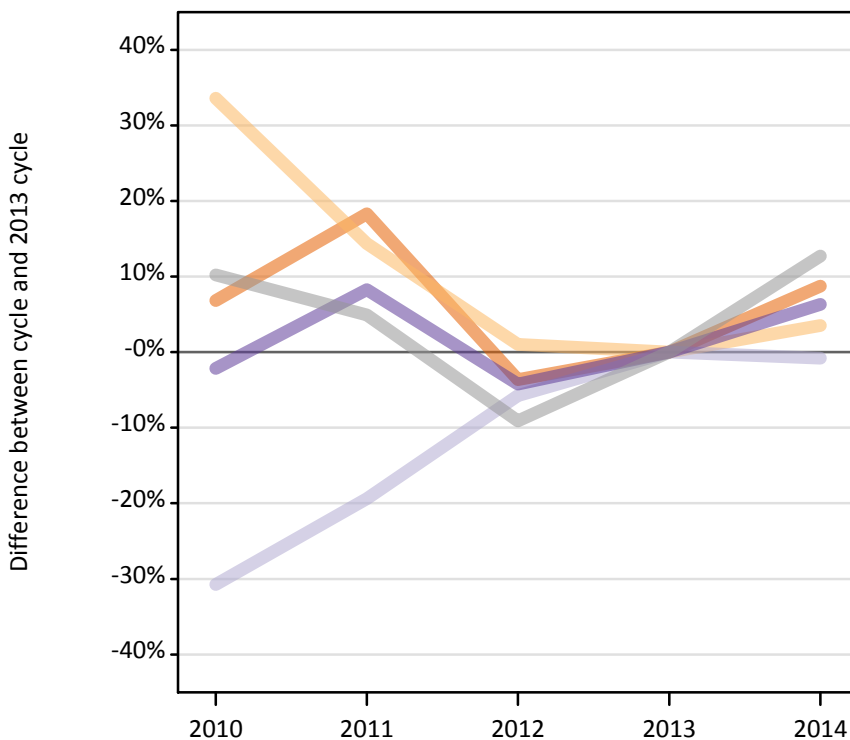
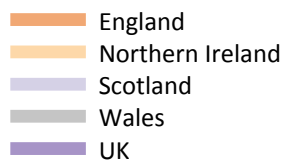
### F.5.18 Applications by domicile and country of institution : Wales

Difference between cycle and 2013 cycle

Domicile of applicant and country of institution		2010	2011	2012	2013	2014
Wales	England	-8%	-2%	0%	0%	7%
	Northern Ireland	-16%	-13%	6%	0%	3%
	Scotland	9%	-4%	2%	0%	2%
	Wales	10%	13%	7%	0%	-2%
	UK	-0%	4%	3%	0%	3%

### F.5.19 Applications by domicile and country of institution : EU (excluding UK)

Difference between cycle and 2013 cycle



### F.5.20 Applications by domicile and country of institution : EU (excluding UK)

Domicile of applicant and country of institution		2010	2011	2012	2013	2014
EU (excluding UK)	England	130,640	144,710	117,830	122,290	132,980
	Northern Ireland	4,560	3,910	3,450	3,420	3,540
	Scotland	30,930	36,000	42,100	44,660	44,310
	Wales	4,970	4,730	4,100	4,510	5,080
	UK	171,100	189,340	167,480	174,870	185,910

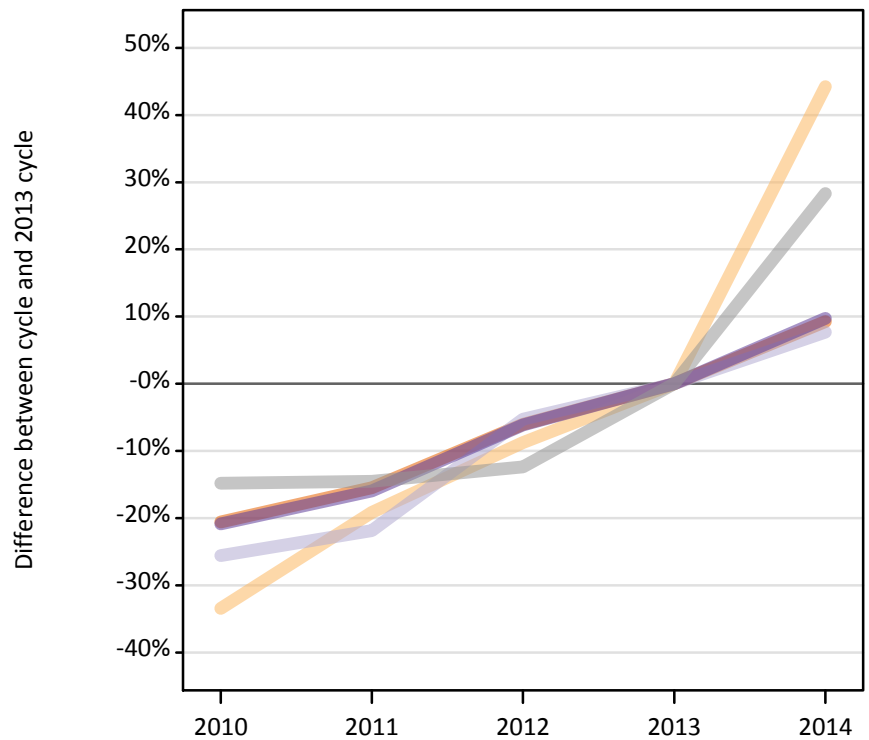
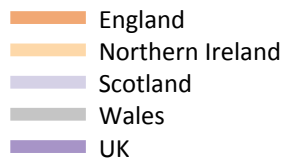
### F.5.21 Applications by domicile and country of institution : EU (excluding UK)

Difference between cycle and 2013 cycle

Domicile of applicant and country of institution		2010	2011	2012	2013	2014
EU (excluding UK)	England	7%	18%	-4%	0%	9%
	Northern Ireland	34%	14%	1%	0%	4%
	Scotland	-31%	-19%	-6%	0%	-1%
	Wales	10%	5%	-9%	0%	13%
	UK	-2%	8%	-4%	0%	6%

### F.5.22 Applications by domicile and country of institution : Not EU

Difference between cycle and 2013 cycle



### F.5.23 Applications by domicile and country of institution : Not EU

Domicile of applicant and country of institution		2010	2011	2012	2013	2014
Not EU	England	165,860	176,550	196,240	208,840	228,150
	Northern Ireland	560	680	770	850	1,220
	Scotland	13,550	14,220	17,240	18,200	19,600
	Wales	5,200	5,210	5,340	6,100	7,820
	UK	185,160	196,670	219,600	233,980	256,780

### F.5.24 Applications by domicile and country of institution : Not EU

Difference between cycle and 2013 cycle

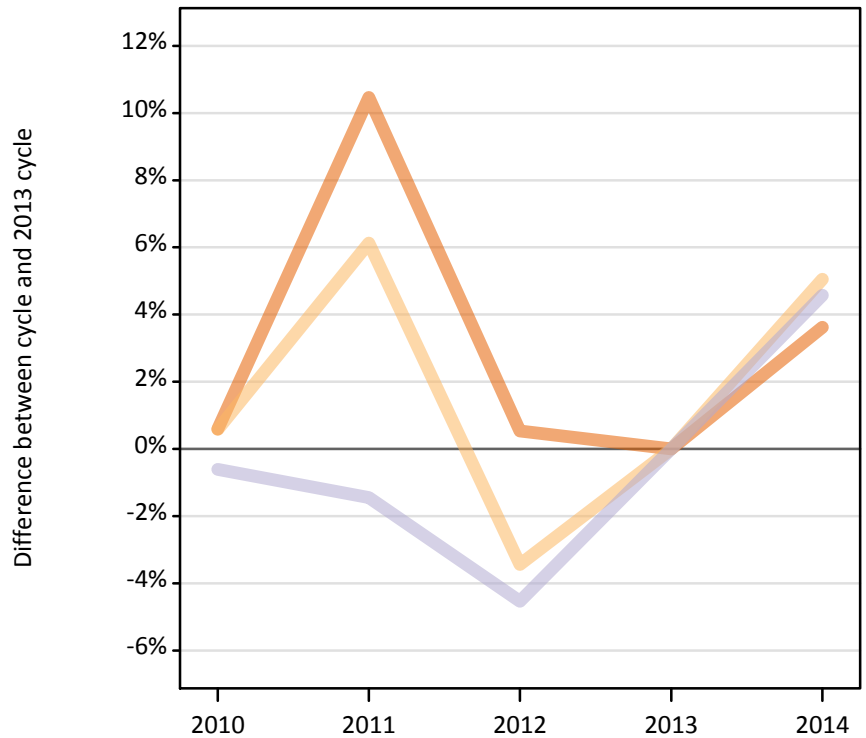
Domicile of applicant and country of institution		2010	2011	2012	2013	2014
Not EU	England	-21%	-15%	-6%	0%	9%
	Northern Ireland	-33%	-19%	-9%	0%	44%
	Scotland	-26%	-22%	-5%	0%	8%
	Wales	-15%	-15%	-12%	0%	28%
	UK	-21%	-16%	-6%	0%	10%



### F.5.25 Applications by domicile and tariff group of institution : All domiciles

Difference between cycle and 2013 cycle

- 1. Lower tariff
- 2. Medium tariff
- 3. Higher tariff



### F.5.26 Applications by domicile and tariff group of institution : All domiciles

Domicile of applicant and tariff group of institution		2010	2011	2012	2013	2014
All domiciles	1. Lower tariff	895,460	983,290	894,900	890,180	922,450
	2. Medium tariff	801,460	845,620	769,380	796,780	837,070
	3. Higher tariff	871,840	864,420	837,330	877,150	917,290
	All	2,568,760	2,693,340	2,501,610	2,564,110	2,676,810

### F.5.27 Applications by domicile and tariff group of institution : All domiciles

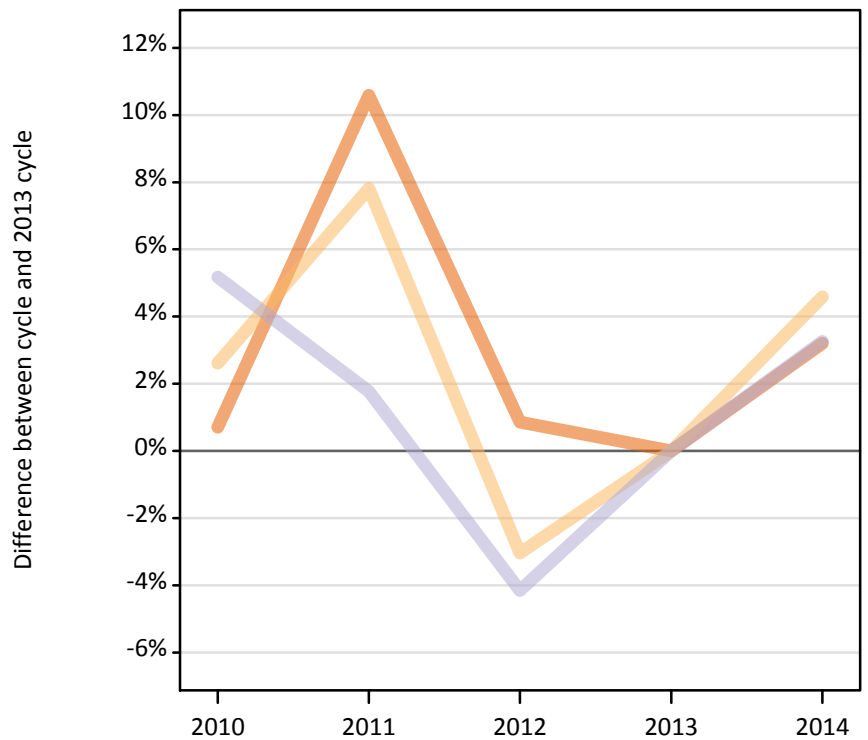
Difference between cycle and 2013 cycle

Domicile of applicant and tariff group of institution		2010	2011	2012	2013	2014
All domiciles	1. Lower tariff	1%	10%	1%	0%	4%
	2. Medium tariff	1%	6%	-3%	0%	5%
	3. Higher tariff	-1%	-1%	-5%	0%	5%
	All	0%	5%	-2%	0%	4%

### F.5.28 Applications by domicile and tariff group of institution : UK

Difference between cycle and 2013 cycle

- 1. Lower tariff
- 2. Medium tariff
- 3. Higher tariff



### F.5.29 Applications by domicile and tariff group of institution : UK

Domicile of applicant and tariff group of institution		2010	2011	2012	2013	2014
UK	1. Lower tariff	826,940	908,010	828,170	821,100	847,370
	2. Medium tariff	705,000	740,750	666,170	687,060	718,580
	3. Higher tariff	680,560	658,570	620,180	647,090	668,160
	All	2,212,500	2,307,330	2,114,520	2,155,250	2,234,120

### F.5.30 Applications by domicile and tariff group of institution : UK

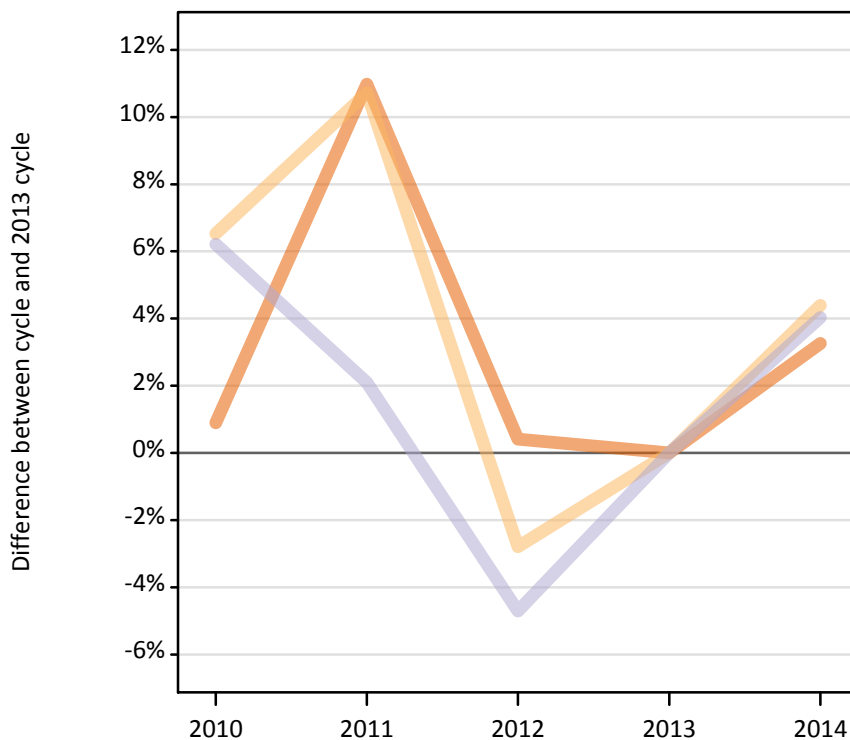
Difference between cycle and 2013 cycle

Domicile of applicant and tariff group of institution		2010	2011	2012	2013	2014
UK	1. Lower tariff	1%	11%	1%	0%	3%
	2. Medium tariff	3%	8%	-3%	0%	5%
	3. Higher tariff	5%	2%	-4%	0%	3%
	All	3%	7%	-2%	0%	4%

### F.5.31 Applications by domicile and tariff group of institution : England

Difference between cycle and 2013 cycle

- 1. Lower tariff
- 2. Medium tariff
- 3. Higher tariff



### F.5.32 Applications by domicile and tariff group of institution : England

Domicile of applicant and tariff group of institution		2010	2011	2012	2013	2014
England	1. Lower tariff	747,550	822,270	743,940	740,890	765,050
	2. Medium tariff	582,630	605,570	531,640	546,910	570,950
	3. Higher tariff	552,220	530,780	495,420	519,890	540,840
	All	1,882,390	1,958,610	1,771,000	1,807,680	1,876,840

### F.5.33 Applications by domicile and tariff group of institution : England

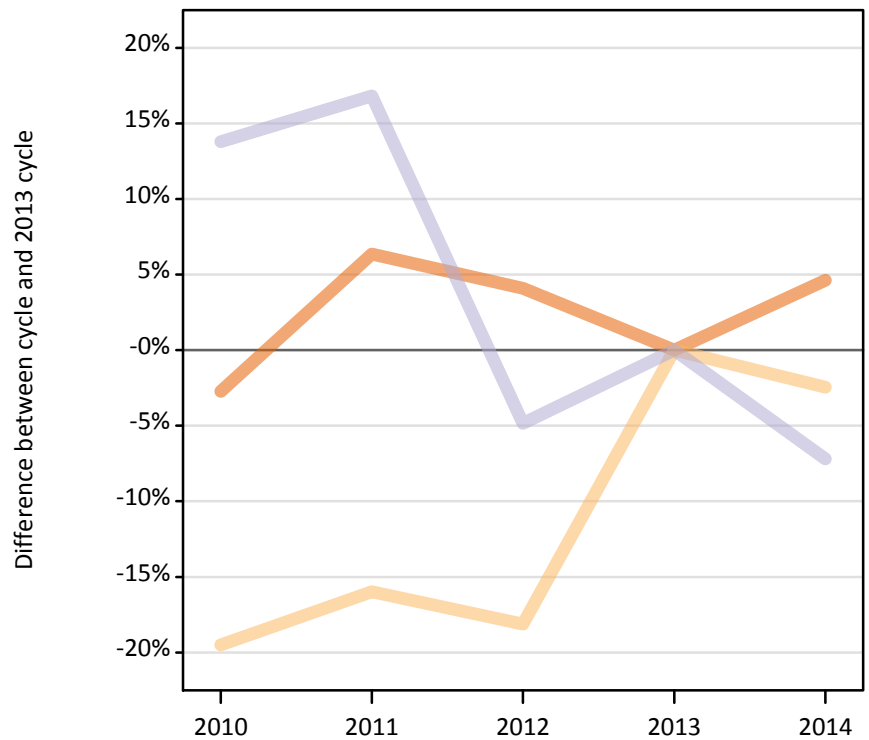
Difference between cycle and 2013 cycle

Domicile of applicant and tariff group of institution		2010	2011	2012	2013	2014
England	1. Lower tariff	1%	11%	0%	0%	3%
	2. Medium tariff	7%	11%	-3%	0%	4%
	3. Higher tariff	6%	2%	-5%	0%	4%
	All	4%	8%	-2%	0%	4%

### F.5.34 Applications by domicile and tariff group of institution : Northern Ireland

Difference between cycle and 2013 cycle

- 1. Lower tariff
- 2. Medium tariff
- 3. Higher tariff



### F.5.35 Applications by domicile and tariff group of institution : Northern Ireland

Domicile of applicant and tariff group of institution		2010	2011	2012	2013	2014
Northern Ireland	1. Lower tariff	40,440	44,220	43,270	41,570	43,500
	2. Medium tariff	27,760	28,980	28,240	34,490	33,650
	3. Higher tariff	15,780	16,200	13,200	13,870	12,870
	All	83,980	89,400	84,710	89,930	90,010

### F.5.36 Applications by domicile and tariff group of institution : Northern Ireland

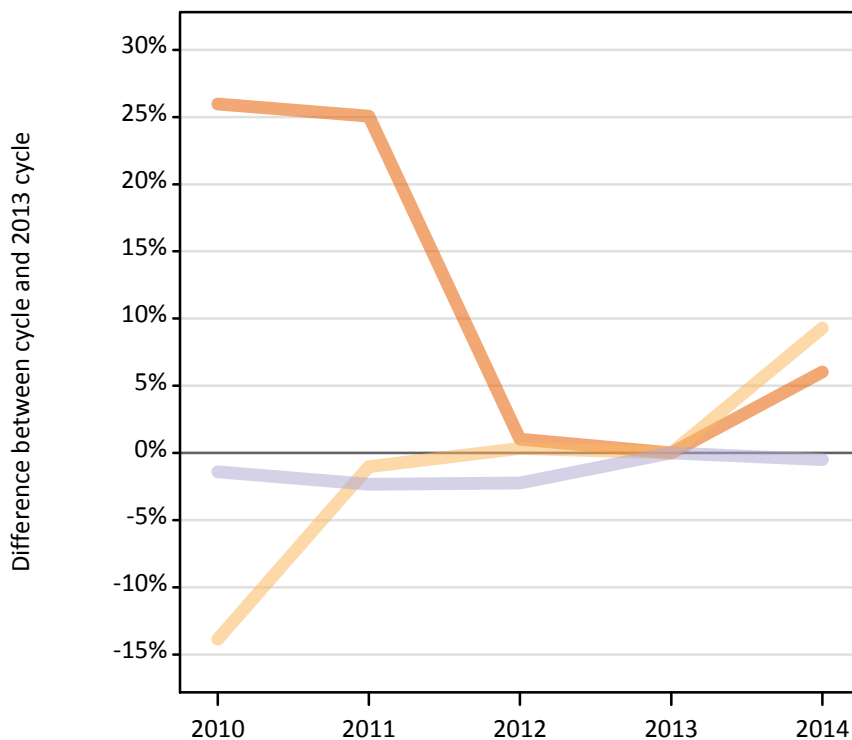
Difference between cycle and 2013 cycle

Domicile of applicant and tariff group of institution		2010	2011	2012	2013	2014
Northern Ireland	1. Lower tariff	-3%	6%	4%	0%	5%
	2. Medium tariff	-20%	-16%	-18%	0%	-2%
	3. Higher tariff	14%	17%	-5%	0%	-7%
	All	-7%	-1%	-6%	0%	0%

### F.5.37 Applications by domicile and tariff group of institution : Scotland

Difference between cycle and 2013 cycle

- 1. Lower tariff
- 2. Medium tariff
- 3. Higher tariff



### F.5.38 Applications by domicile and tariff group of institution : Scotland

Domicile of applicant and tariff group of institution		2010	2011	2012	2013	2014
Scotland	1. Lower tariff	3,080	3,050	2,470	2,440	2,590
	2. Medium tariff	67,140	77,140	78,190	77,930	85,180
	3. Higher tariff	87,320	86,490	86,580	88,570	88,130
	All	157,530	166,690	167,240	168,940	175,900

### F.5.39 Applications by domicile and tariff group of institution : Scotland

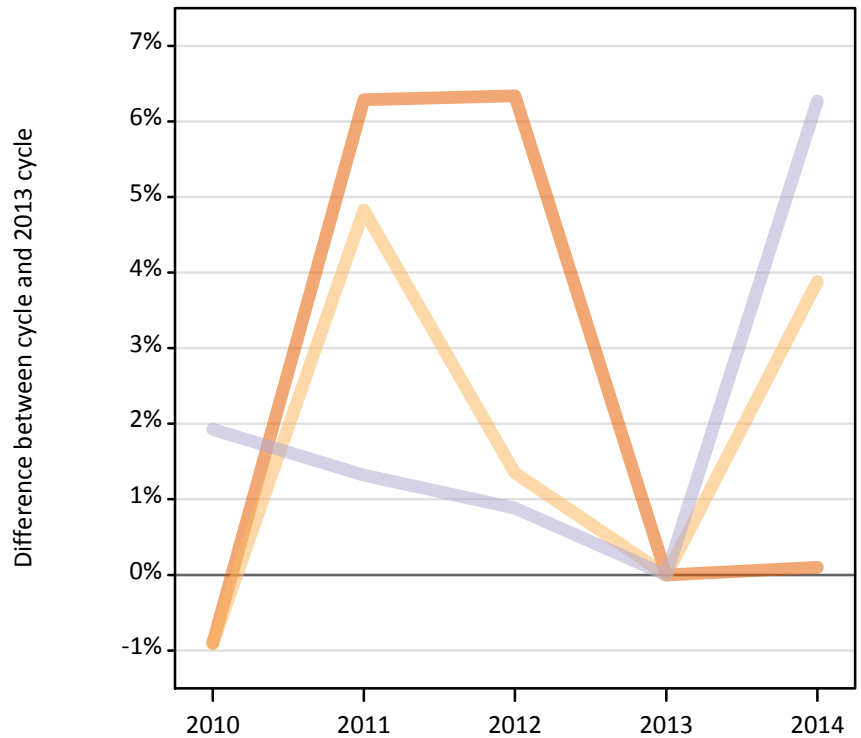
Difference between cycle and 2013 cycle

Domicile of applicant and tariff group of institution		2010	2011	2012	2013	2014
Scotland	1. Lower tariff	26%	25%	1%	0%	6%
	2. Medium tariff	-14%	-1%	0%	0%	9%
	3. Higher tariff	-1%	-2%	-2%	0%	-0%
	All	-7%	-1%	-1%	0%	4%

### F.5.40 Applications by domicile and tariff group of institution : Wales

Difference between cycle and 2013 cycle

- 1. Lower tariff
- 2. Medium tariff
- 3. Higher tariff



### F.5.41 Applications by domicile and tariff group of institution : Wales

Domicile of applicant and tariff group of institution		2010	2011	2012	2013	2014
Wales	1. Lower tariff	35,880	38,480	38,500	36,200	36,240
	2. Medium tariff	27,470	29,060	28,100	27,720	28,800
	3. Higher tariff	25,250	25,100	24,990	24,770	26,320
	All	88,590	92,640	91,580	88,690	91,360

### F.5.42 Applications by domicile and tariff group of institution : Wales

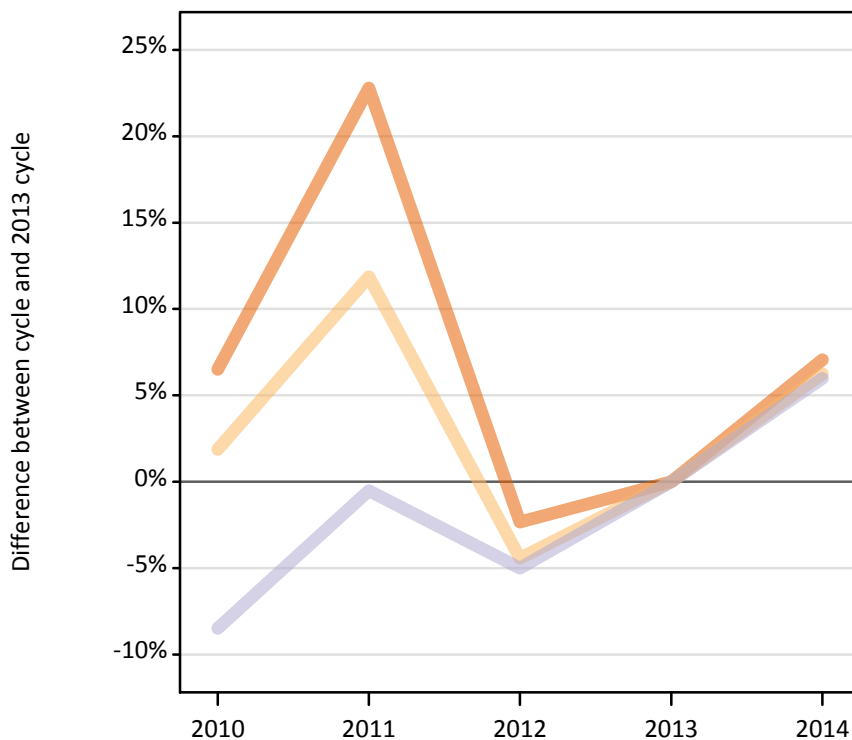
Difference between cycle and 2013 cycle

Domicile of applicant and tariff group of institution		2010	2011	2012	2013	2014
Wales	1. Lower tariff	-1%	6%	6%	0%	0%
	2. Medium tariff	-1%	5%	1%	0%	4%
	3. Higher tariff	2%	1%	1%	0%	6%
	All	-0%	4%	3%	0%	3%

### F.5.43 Applications by domicile and tariff group of institution : EU (excluding UK)

Difference between cycle and 2013 cycle

- 1. Lower tariff
- 2. Medium tariff
- 3. Higher tariff



### F.5.44 Applications by domicile and tariff group of institution : EU (excluding UK)

Domicile of applicant and tariff group of institution		2010	2011	2012	2013	2014
EU (excluding UK)	1. Lower tariff	42,510	49,010	38,990	39,920	42,730
	2. Medium tariff	49,950	54,840	46,860	49,030	52,100
	3. Higher tariff	78,640	85,480	81,630	85,930	91,080
	All	171,100	189,340	167,480	174,870	185,910

### F.5.45 Applications by domicile and tariff group of institution : EU (excluding UK)

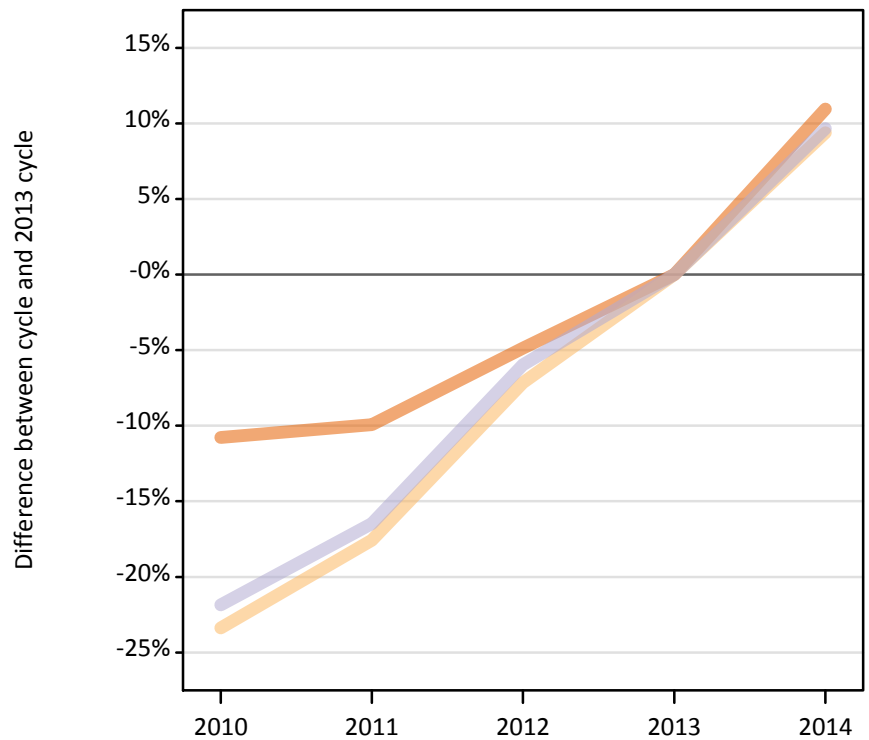
Difference between cycle and 2013 cycle

Domicile of applicant and tariff group of institution		2010	2011	2012	2013	2014
EU (excluding UK)	1. Lower tariff	7%	23%	-2%	0%	7%
	2. Medium tariff	2%	12%	-4%	0%	6%
	3. Higher tariff	-8%	-1%	-5%	0%	6%
	All	-2%	8%	-4%	0%	6%

### F.5.46 Applications by domicile and tariff group of institution : Not EU

Difference between cycle and 2013 cycle

- 1. Lower tariff
- 2. Medium tariff
- 3. Higher tariff



### F.5.47 Applications by domicile and tariff group of institution : Not EU

Domicile of applicant and tariff group of institution		2010	2011	2012	2013	2014
Not EU	1. Lower tariff	26,010	26,270	27,740	29,160	32,350
	2. Medium tariff	46,510	50,030	56,350	60,700	66,390
	3. Higher tariff	112,640	120,370	135,510	144,130	158,050
	All	185,160	196,670	219,600	233,980	256,780

### F.5.48 Applications by domicile and tariff group of institution : Not EU

Difference between cycle and 2013 cycle

Domicile of applicant and tariff group of institution		2010	2011	2012	2013	2014
Not EU	1. Lower tariff	-11%	-10%	-5%	0%	11%
	2. Medium tariff	-23%	-18%	-7%	0%	9%
	3. Higher tariff	-22%	-16%	-6%	0%	10%
	All	-21%	-16%	-6%	0%	10%



## F.5.49 Technical notes and definitions

Applicants have been able to submit applications for all 2014 courses since early September.

Counts of the number of applicants reported have been rounded to the nearest 10 applicants, this may result in instances where totals do not equal the sum of the components. Proportional changes have been rounded to the nearest whole percentage point.

The Channel Islands and the Isle of Man are assigned as 'Not EU'. The previous March statistical release assigned the Channel Islands and Isle of Man in the 'UK' therefore the figures for earlier cycles may not match the previous March statistical release.

### Age

This statistical release uses country-specific age definitions which align with the cut off points for school/college cohorts within the different administrations of the UK. For England and Wales ages are defined on the 31 August, for Northern Ireland on the 1 July and for Scotland on the 28 February the following year. Defining ages in this way matches the assignment of children to school cohorts. For applicants outside of the UK the cohort cut off for England and Wales has been used.

### Applicant

A person who has made an application in the UCAS system during the cycle reported, this includes those who submit applications for deferred entry.

### Application

An application to a course at an institution made by an applicant. Applicants may make up to five applications.

### Country of institution

The UK country of the institution applied to.

### Domicile

Declared area of permanent residence. The Channel Islands and the Isle of Man have been assigned as 'Not EU'.

### First time applicant

An applicant that did not apply to the UCAS scheme in the previous cycle.

### Reapplicant

An applicant that applied to the UCAS scheme in the previous cycle.

### Subject group

The JACS3 classification used to classify courses into subject groups.

### Tariff group of institution

Institutions are grouped as higher, medium or lower tariff based on their average levels of attainment of their accepted applicants (summarised through UCAS Tariff points) in recent cycles. Each group of institutions accounted for around a third of all UK 18 year old acceptances in recent cycles.