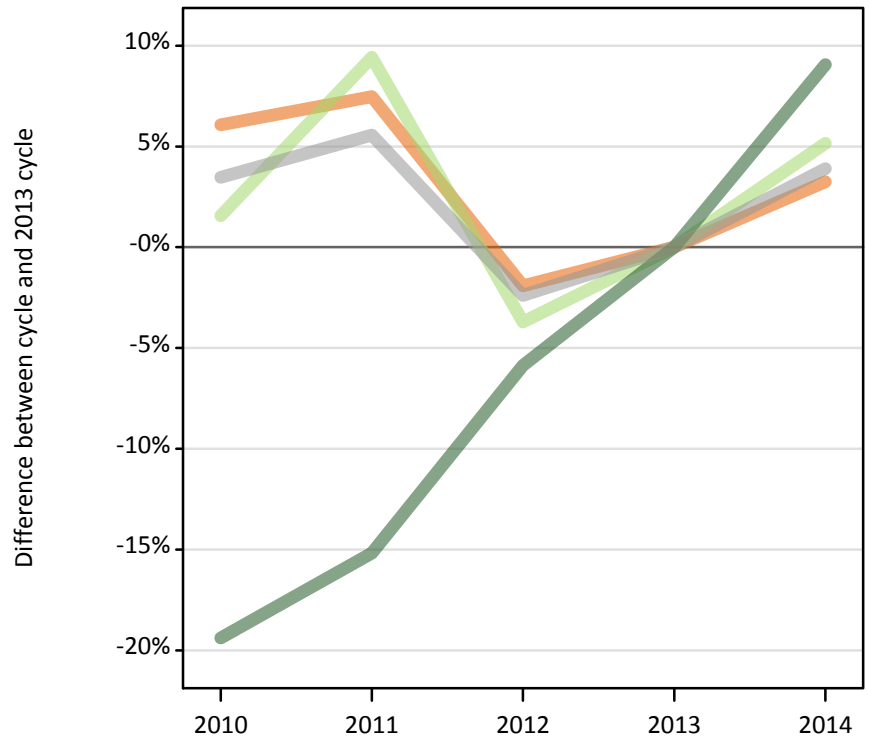


## Applicants by domicile at the 24 March deadline

### F.1.1 Applicants by domicile group

Difference between cycle and 2013 cycle



### F.1.2 Applicants by domicile group

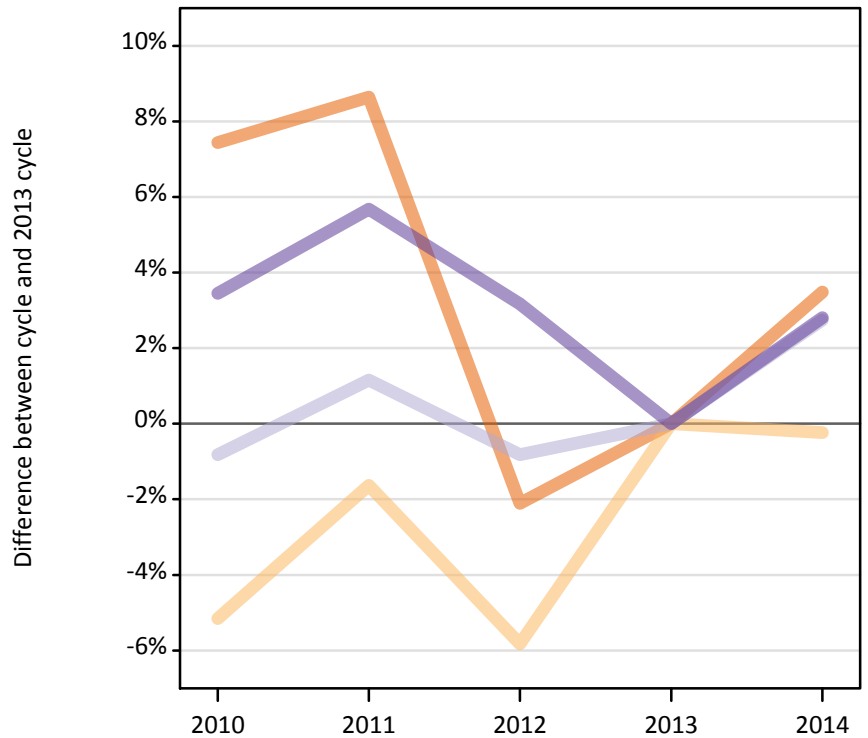
Domicile group of applicant	2010	2011	2012	2013	2014
UK	526,710	533,680	487,020	496,550	512,660
EU (excluding UK)	40,650	43,800	38,540	40,030	42,090
Not EU	42,860	45,110	50,060	53,180	58,000
All domiciles	610,230	622,580	575,620	589,750	612,750

### F.1.3 Applicants by domicile group

Difference between cycle and 2013 cycle

Domicile group of applicant	2010	2011	2012	2013	2014
UK	6%	7%	-2%	0%	3%
EU (excluding UK)	2%	9%	-4%	0%	5%
Not EU	-19%	-15%	-6%	0%	9%
All domiciles	3%	6%	-2%	0%	4%

### F.1.4 Applicants by UK country of domicile Difference between cycle and 2013 cycle



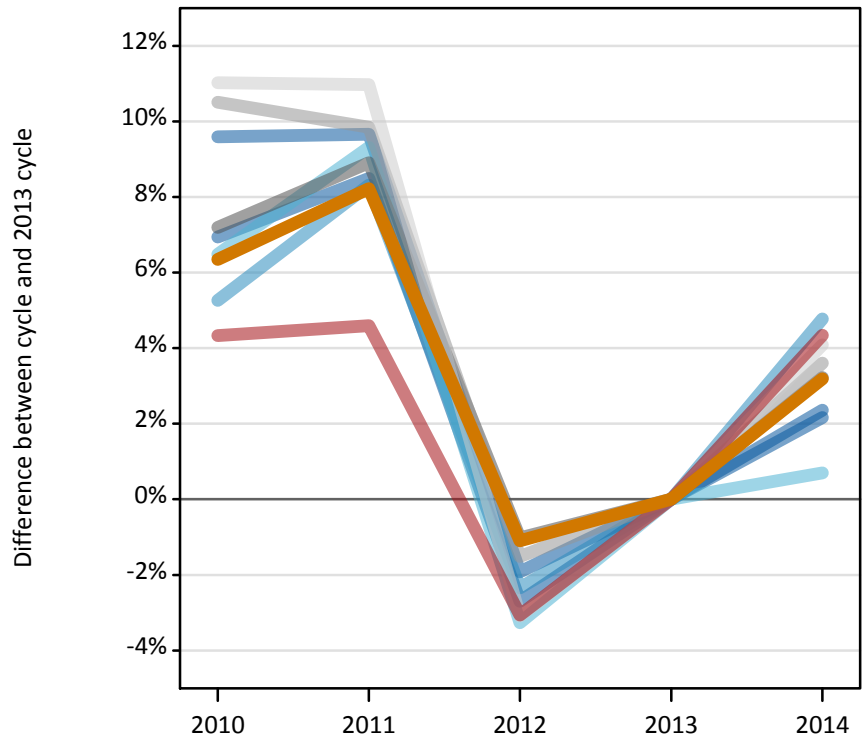
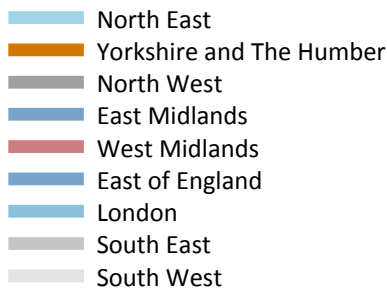
### F.1.5 Applicants by UK country of domicile

Domicile group of applicant	2010	2011	2012	2013	2014
England	444,620	449,580	405,110	413,820	428,250
Northern Ireland	18,930	19,630	18,800	19,960	19,910
Scotland	40,980	41,800	40,980	41,320	42,460
Wales	22,190	22,670	22,130	21,450	22,050
UK	526,710	533,680	487,020	496,550	512,660

### F.1.6 Applicants by UK country of domicile Difference between cycle and 2013 cycle

Domicile group of applicant	2010	2011	2012	2013	2014
England	7%	9%	-2%	0%	3%
Northern Ireland	-5%	-2%	-6%	0%	-0%
Scotland	-1%	1%	-1%	0%	3%
Wales	3%	6%	3%	0%	3%
UK	6%	7%	-2%	0%	3%

### F.1.7 Applicants by English region of domicile Difference between cycle and 2013 cycle



### F.1.8 Applicants by English region of domicile

English region	2010	2011	2012	2013	2014
North East	19,720	20,240	17,910	18,520	18,650
Yorkshire and The Humber	40,570	41,290	37,730	38,150	39,370
North West	60,460	61,430	55,830	56,410	58,230
East Midlands	35,240	35,270	31,540	32,160	32,920
West Midlands	45,740	45,860	42,500	43,850	45,750
East of England	45,410	46,060	41,320	42,460	43,380
London	83,560	85,980	77,520	79,380	83,170
South East	72,440	72,000	64,560	65,550	67,910
South West	41,470	41,450	36,200	37,350	38,880

### F.1.9 Applicants by English region of domicile Difference between cycle and 2013 cycle

English region	2010	2011	2012	2013	2014
North East	6%	9%	-3%	0%	1%
Yorkshire and The Humber	6%	8%	-1%	0%	3%
North West	7%	9%	-1%	0%	3%
East Midlands	10%	10%	-2%	0%	2%
West Midlands	4%	5%	-3%	0%	4%
East of England	7%	8%	-3%	0%	2%
London	5%	8%	-2%	0%	5%
South East	11%	10%	-2%	0%	4%
South West	11%	11%	-3%	0%	4%

## F.1.10 Applicants by declared country of domicile

### Selected countries

Declared country of domicile	2010	2011	2012	2013	2014
Australia	330	350	420	480	510
Austria	460	520	530	540	560
Azerbaijan	180	150	190	180	240
Bahrain	260	240	290	310	310
Bangladesh	320	280	300	230	250
Belgium	900	930	820	890	940
Bermuda	300	230	190	180	190
Botswana	40	40	140	60	100
Brazil	150	130	170	180	210
Brunei	810	680	640	620	780
Bulgaria	2,020	2,300	2,220	2,480	2,210
Canada	1,620	1,780	1,960	1,960	1,940
Cayman Islands	70	100	100	90	120
China	5,990	6,810	7,540	8,160	8,450
Croatia	30	40	40	60	130
Cyprus (European Union)	3,220	3,740	3,040	3,020	3,020
Czech Republic	390	430	420	440	540
Denmark	460	430	390	430	410
Egypt	160	210	290	420	530
Estonia	480	600	520	570	470
Finland	710	830	690	750	840
France	3,610	3,780	3,440	3,560	4,050
Germany	3,650	3,720	3,120	2,900	2,890
Ghana	220	180	190	190	230
Gibraltar	270	300	270	300	280
Greece	2,080	2,270	2,070	2,120	2,130
Guernsey	340	310	290	290	290
Hong Kong	3,370	3,920	5,360	5,370	5,840
Hungary	380	380	540	740	750
India	2,090	2,320	2,620	2,980	3,310
Indonesia	160	250	300	400	440
Iran	300	330	340	210	200
Ireland	7,710	7,120	5,750	5,690	5,490
Isle of Man	550	540	510	480	490
Israel	110	90	100	130	90
Italy	1,880	2,220	2,390	2,890	3,690
Japan	340	370	410	440	490
Jersey	570	590	560	520	490
Jordan	270	330	310	360	360
Kazakhstan	430	370	310	320	310
Kenya	540	530	560	540	560
Korea (South)	980	1,180	1,170	1,220	1,190
Kuwait	230	260	300	300	350

Declared country of domicile	2010	2011	2012	2013	2014
Latvia	1,050	950	680	520	490
Lebanon	100	120	150	180	210
Lithuania	2,390	3,120	2,270	1,960	1,770
Luxembourg	340	370	360	410	450
Macao	80	100	140	130	170
Malaysia	2,460	2,770	3,060	3,690	5,010
Malta	140	130	90	100	90
Mauritius	450	400	420	340	450
Mexico	130	110	120	130	130
Morocco	140	170	190	230	300
Nepal	110	110	120	90	80
Netherlands	760	770	680	720	760
New Zealand	110	130	130	140	160
Nigeria	1,520	1,490	1,490	1,560	1,520
Norway	1,210	1,270	1,390	1,510	1,540
Oman	140	140	130	160	200
Pakistan	1,840	1,600	1,550	1,510	1,520
Philippines	90	90	90	110	110
Poland	1,900	1,870	1,720	1,970	2,310
Portugal	550	650	590	750	780
Qatar	200	240	260	340	280
Romania	1,750	2,590	2,430	2,290	2,520
Russia	610	640	740	880	1,090
Saudi Arabia	740	650	690	700	710
Serbia	60	70	90	130	110
Singapore	2,550	2,990	3,480	3,690	3,990
Slovakia	400	440	450	450	560
Slovenia	90	110	100	120	150
South Africa	230	200	230	250	290
Spain	1,290	1,550	1,470	1,890	2,270
Sri Lanka	410	350	300	270	270
Sweden	1,690	1,570	1,450	1,450	1,460
Switzerland	820	860	910	1,060	1,080
Taiwan	220	260	280	260	300
Tanzania	140	140	130	140	160
Thailand	480	540	610	620	750
Trinidad and Tobago	140	150	140	160	150
Turkey	350	380	430	490	540
Uganda	130	90	130	140	100
Ukraine	180	180	210	280	290
United Arab Emirates	660	720	800	930	1,130
United States of America	2,580	2,550	2,780	3,100	3,400
Vietnam	500	570	600	550	490
Zambia	110	100	120	130	110
Zimbabwe	320	260	310	300	340

### F.1.11 Applicants by declared country of domicile

Selected countries, difference between cycle and 2013 cycle

Declared country of domicile	2010	2011	2012	2013	2014
Australia	-32%	-27%	-12%	0%	6%
Austria	-15%	-3%	-2%	0%	4%
Azerbaijan	0%	-19%	1%	0%	28%
Bahrain	-18%	-23%	-7%	0%	-1%
Bangladesh	41%	20%	32%	0%	8%
Belgium	2%	5%	-8%	0%	6%
Bermuda	68%	27%	5%	0%	6%
Botswana	-42%	-41%	120%	0%	56%
Brazil	-17%	-29%	-8%	0%	18%
Brunei	30%	9%	3%	0%	24%
Bulgaria	-18%	-7%	-10%	0%	-11%
Canada	-17%	-9%	0%	0%	-1%
Cayman Islands	-24%	5%	8%	0%	26%
China	-27%	-17%	-8%	0%	4%
Croatia	-48%	-42%	-44%	0%	103%
Cyprus (European Union)	6%	24%	0%	0%	-0%
Czech Republic	-11%	-0%	-4%	0%	25%
Denmark	7%	0%	-9%	0%	-4%
Egypt	-61%	-50%	-31%	0%	25%
Estonia	-17%	4%	-10%	0%	-18%
Finland	-6%	11%	-9%	0%	11%
France	1%	6%	-3%	0%	14%
Germany	26%	28%	8%	0%	-1%
Ghana	19%	-4%	3%	0%	20%
Gibraltar	-8%	0%	-8%	0%	-4%
Greece	-2%	7%	-3%	0%	0%
Guernsey	18%	6%	2%	0%	2%
Hong Kong	-37%	-27%	-0%	0%	9%
Hungary	-48%	-49%	-28%	0%	1%
India	-30%	-22%	-12%	0%	11%
Indonesia	-59%	-38%	-25%	0%	11%
Iran	43%	58%	60%	0%	-4%
Ireland	35%	25%	1%	0%	-4%
Isle of Man	15%	13%	6%	0%	2%
Israel	-13%	-29%	-23%	0%	-26%
Italy	-35%	-23%	-17%	0%	28%
Japan	-22%	-16%	-7%	0%	10%
Jersey	10%	14%	6%	0%	-7%
Jordan	-26%	-10%	-14%	0%	-1%
Kazakhstan	36%	17%	-3%	0%	-3%
Kenya	-1%	-2%	4%	0%	4%
Korea (South)	-20%	-3%	-4%	0%	-2%
Kuwait	-22%	-14%	2%	0%	17%

Declared country of domicile	2010	2011	2012	2013	2014
Latvia	104%	83%	32%	0%	-5%
Lebanon	-46%	-30%	-14%	0%	21%
Lithuania	22%	59%	16%	0%	-10%
Luxembourg	-17%	-10%	-12%	0%	10%
Macao	-39%	-25%	7%	0%	27%
Malaysia	-33%	-25%	-17%	0%	36%
Malta	31%	25%	-15%	0%	-14%
Mauritius	32%	16%	21%	0%	32%
Mexico	-7%	-16%	-13%	0%	-1%
Morocco	-41%	-26%	-17%	0%	29%
Nepal	27%	24%	32%	0%	-8%
Netherlands	5%	6%	-5%	0%	5%
New Zealand	-24%	-6%	-8%	0%	16%
Nigeria	-3%	-4%	-4%	0%	-3%
Norway	-20%	-16%	-8%	0%	2%
Oman	-15%	-13%	-18%	0%	25%
Pakistan	22%	6%	3%	0%	1%
Philippines	-20%	-16%	-15%	0%	5%
Poland	-4%	-5%	-13%	0%	17%
Portugal	-27%	-13%	-20%	0%	4%
Qatar	-43%	-31%	-24%	0%	-18%
Romania	-23%	13%	6%	0%	10%
Russia	-31%	-27%	-16%	0%	24%
Saudi Arabia	5%	-7%	-2%	0%	1%
Serbia	-49%	-46%	-30%	0%	-16%
Singapore	-31%	-19%	-6%	0%	8%
Slovakia	-10%	-1%	0%	0%	26%
Slovenia	-24%	-14%	-17%	0%	23%
South Africa	-9%	-20%	-8%	0%	15%
Spain	-32%	-18%	-22%	0%	20%
Sri Lanka	51%	28%	8%	0%	-2%
Sweden	16%	8%	-0%	0%	1%
Switzerland	-22%	-19%	-14%	0%	2%
Taiwan	-16%	2%	7%	0%	17%
Tanzania	-2%	-4%	-11%	0%	15%
Thailand	-23%	-13%	-1%	0%	22%
Trinidad and Tobago	-13%	-4%	-11%	0%	-4%
Turkey	-28%	-22%	-11%	0%	10%
Uganda	-5%	-32%	-8%	0%	-24%
Ukraine	-35%	-34%	-24%	0%	4%
United Arab Emirates	-29%	-22%	-14%	0%	22%
United States of America	-17%	-18%	-10%	0%	10%
Vietnam	-9%	2%	8%	0%	-12%
Zambia	-14%	-23%	-8%	0%	-16%
Zimbabwe	10%	-12%	3%	0%	14%

### F.1.12 Technical notes and definitions

Applicants have been able to submit applications for all 2014 courses since early September.

Counts of the number of applicants reported have been rounded to the nearest 10 applicants, this may result in instances where totals do not equal the sum of the components. Proportional changes have been rounded to the nearest whole percentage point.

The Channel Islands and the Isle of Man are assigned as 'Not EU'. The previous March statistical release assigned the Channel Islands and Isle of Man in the 'UK' therefore the figures for earlier cycles may not match the previous March statistical release.

#### Age

This statistical release uses country-specific age definitions which align with the cut off points for school/college cohorts within the different administrations of the UK. For England and Wales ages are defined on the 31 August, for Northern Ireland on the 1 July and for Scotland on the 28 February the following year. Defining ages in this way matches the assignment of children to school cohorts. For applicants outside of the UK the cohort cut off for England and Wales has been used.

#### Applicant

A person who has made an application in the UCAS system during the cycle reported, this includes those who submit applications for deferred entry.

#### Application

An application to a course at an institution made by an applicant. Applicants may make up to five applications.

#### Country of institution

The UK country of the institution applied to.

#### Domicile

Declared area of permanent residence. The Channel Islands and the Isle of Man have been assigned as 'Not EU'.

#### First time applicant

An applicant that did not apply to the UCAS scheme in the previous cycle.

#### Reapplicant

An applicant that applied to the UCAS scheme in the previous cycle.

#### Subject group

The JACS3 classification used to classify courses into subject groups.

#### Tariff group of institution

Institutions are grouped as higher, medium or lower tariff based on their average levels of attainment of their accepted applicants (summarised through UCAS Tariff points) in recent cycles. Each group of institutions accounted for around a third of all UK 18 year old acceptances in recent cycles.