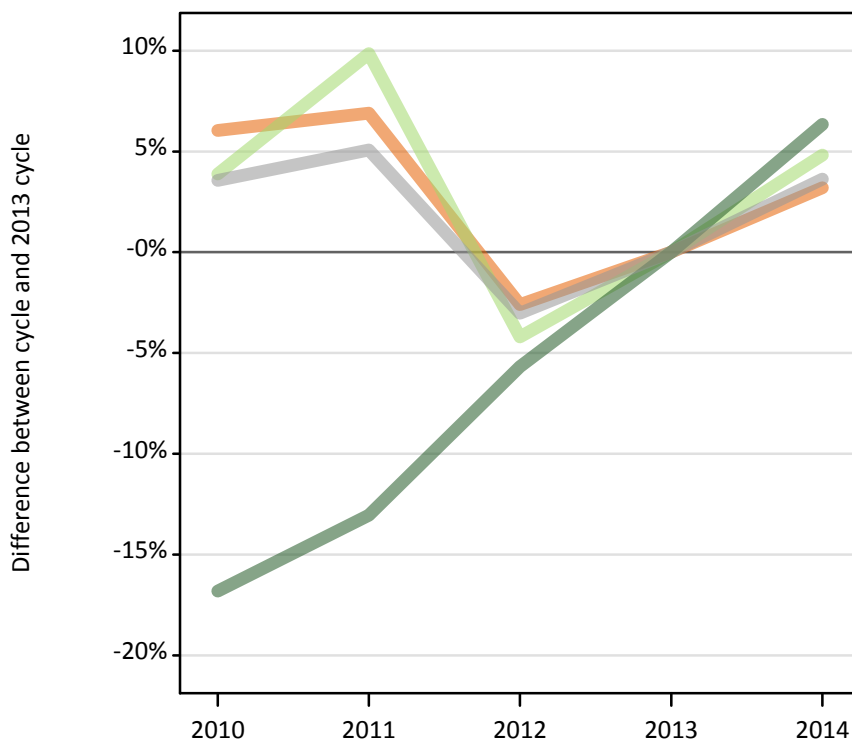


Applicants by domicile at the 30 June deadline

I.1.1 Applicants by domicile group

Difference between cycle and 2013 cycle



I.1.2 Applicants by domicile group

Domicile group of applicant	2010	2011	2012	2013	2014
UK	559,570	564,120	513,970	527,670	544,580
EU (excluding UK)	44,980	47,560	41,480	43,290	45,380
Not EU	54,020	56,470	61,260	64,940	69,060
All domiciles	658,560	668,150	616,700	635,910	659,030

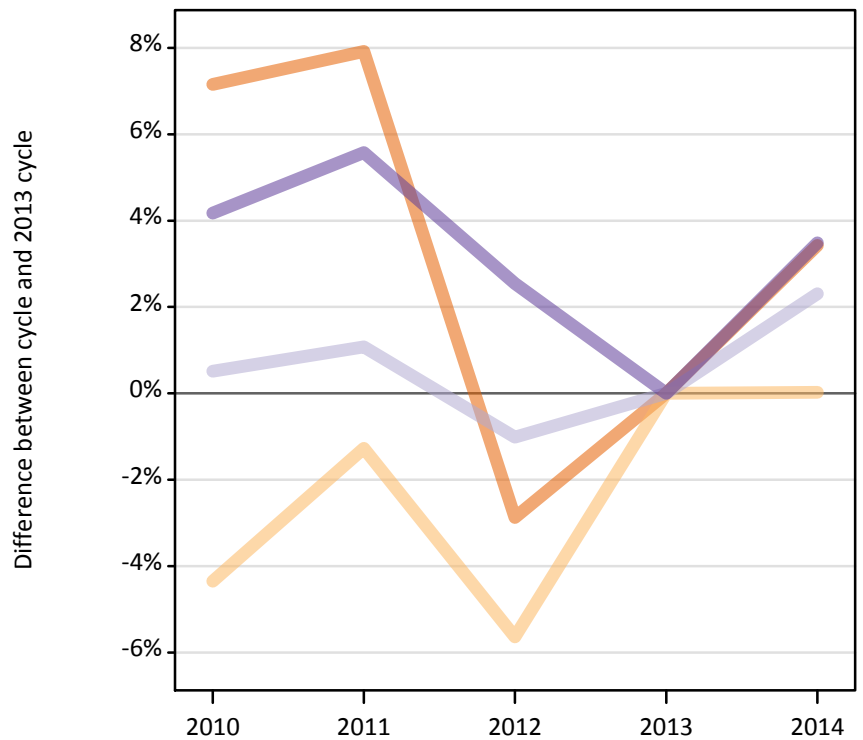
I.1.3 Applicants by domicile group

Difference between cycle and 2013 cycle

Domicile group of applicant	2010	2011	2012	2013	2014
UK	6%	7%	-3%	0%	3%
EU (excluding UK)	4%	10%	-4%	0%	5%
Not EU	-17%	-13%	-6%	0%	6%
All domiciles	4%	5%	-3%	0%	4%

I.1.4 Applicants by UK country of domicile

Difference between cycle and 2013 cycle



I.1.5 Applicants by UK country of domicile

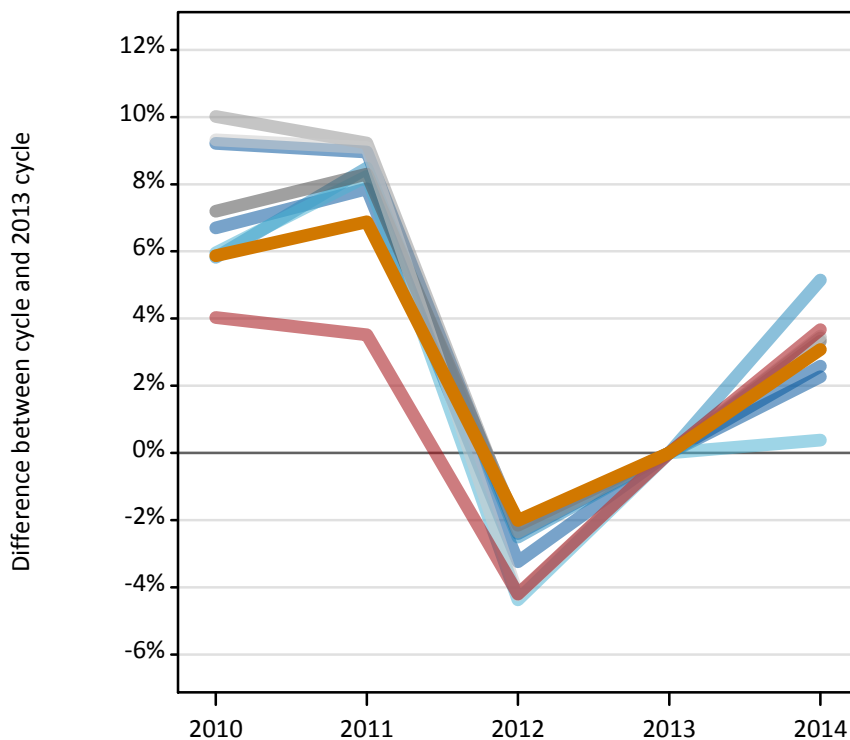
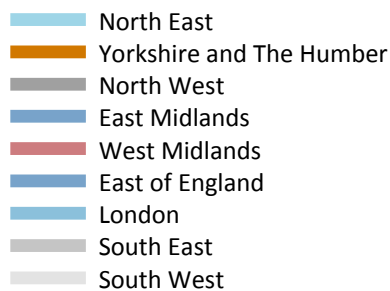
Domicile group of applicant	2010	2011	2012	2013	2014
England	473,400	476,770	429,100	441,790	456,920
Northern Ireland	19,410	20,030	19,150	20,290	20,300
Scotland	43,150	43,390	42,490	42,930	43,910
Wales	23,610	23,920	23,240	22,660	23,450
UK	559,570	564,120	513,970	527,670	544,580

I.1.6 Applicants by UK country of domicile

Difference between cycle and 2013 cycle

Domicile group of applicant	2010	2011	2012	2013	2014
England	7%	8%	-3%	0%	3%
Northern Ireland	-4%	-1%	-6%	0%	0%
Scotland	1%	1%	-1%	0%	2%
Wales	4%	6%	3%	0%	3%
UK	6%	7%	-3%	0%	3%

I.1.7 Applicants by English region of domicile Difference between cycle and 2013 cycle



I.1.8 Applicants by English region of domicile

English region	2010	2011	2012	2013	2014
North East	20,940	21,390	18,900	19,760	19,840
Yorkshire and The Humber	43,110	43,520	39,900	40,720	41,970
North West	64,760	65,420	59,110	60,410	62,420
East Midlands	37,050	36,970	33,110	33,930	34,810
West Midlands	48,730	48,490	44,880	46,840	48,560
East of England	48,090	48,620	43,620	45,070	46,100
London	90,690	92,970	83,560	85,700	90,110
South East	76,170	75,620	67,600	69,230	71,600
South West	43,870	43,780	38,430	40,130	41,530

I.1.9 Applicants by English region of domicile Difference between cycle and 2013 cycle

English region	2010	2011	2012	2013	2014
North East	6%	8%	-4%	0%	0%
Yorkshire and The Humber	6%	7%	-2%	0%	3%
North West	7%	8%	-2%	0%	3%
East Midlands	9%	9%	-2%	0%	3%
West Midlands	4%	4%	-4%	0%	4%
East of England	7%	8%	-3%	0%	2%
London	6%	8%	-3%	0%	5%
South East	10%	9%	-2%	0%	3%
South West	9%	9%	-4%	0%	3%

I.1.10 Applicants by declared country of domicile

Selected countries

Declared country of domicile	2010	2011	2012	2013	2014
Angola	90	80	100	90	110
Australia	360	400	470	540	570
Austria	490	560	550	570	590
Azerbaijan	270	220	260	290	380
Bahrain	310	340	360	380	380
Bangladesh	480	380	390	290	320
Barbados	100	80	90	80	90
Belgium	950	980	860	940	1,010
Bermuda	320	250	210	190	200
Botswana	230	150	160	110	120
Brazil	180	150	200	230	260
Brunei	940	800	750	730	840
Bulgaria	2,100	2,380	2,290	2,540	2,290
Cameroon	110	80	80	80	80
Canada	1,910	2,120	2,360	2,330	2,270
Cayman Islands	70	100	110	110	120
China	8,500	9,660	10,510	10,690	10,730
Croatia	40	40	40	70	150
Cyprus (European Union)	3,630	4,060	3,280	3,300	3,280
Czech Republic	410	450	450	470	600
Denmark	490	460	420	460	450
Egypt	190	260	340	480	610
Estonia	520	630	550	610	520
Finland	780	900	710	820	920
France	4,330	4,220	3,780	3,850	4,370
Germany	4,150	4,120	3,360	3,150	3,150
Ghana	300	260	240	260	270
Gibraltar	280	300	280	310	300
Greece	2,460	2,760	2,370	2,420	2,360
Guernsey	350	320	300	300	300
Hong Kong	3,700	4,350	6,000	6,170	6,570
Hungary	420	400	570	770	770
India	2,910	3,090	3,380	3,790	3,990
Indonesia	200	280	350	480	510
Iran	600	550	460	270	260
Ireland	8,070	7,380	5,990	5,940	5,710
Isle of Man	560	550	520	490	500
Israel	120	110	110	140	110
Italy	2,060	2,430	2,600	3,150	3,990
Japan	400	430	490	490	540
Jersey	580	600	570	530	500
Jordan	330	370	350	410	410

Declared country of domicile	2010	2011	2012	2013	2014
Kazakhstan	600	450	360	360	370
Kenya	680	640	690	650	690
Korea (South)	1,130	1,300	1,320	1,390	1,380
Kuwait	360	420	460	450	480
Latvia	1,140	1,020	730	590	550
Lebanon	110	140	180	200	250
Libyan AR	140	90	80	90	130
Lithuania	2,550	3,280	2,390	2,110	1,910
Luxembourg	350	380	370	420	460
Macao	90	110	150	140	180
Malawi	110	90	80	80	60
Malaysia	3,100	3,520	3,810	4,820	6,180
Malta	150	140	110	120	100
Mauritius	510	470	460	390	500
Mexico	150	140	140	160	150
Morocco	150	210	210	260	320
Nepal	160	150	160	120	100
Netherlands	850	830	740	800	820
New Zealand	120	140	140	150	170
Nigeria	2,260	2,220	2,100	2,280	2,150
Norway	1,670	1,880	2,030	2,150	2,180
Oman	200	200	220	250	330
Pakistan	2,180	1,950	1,830	1,760	1,750
Philippines	100	100	110	120	130
Poland	2,080	2,090	1,840	2,180	2,550
Portugal	640	740	690	860	930
Qatar	310	380	410	510	460
Romania	2,120	2,950	2,740	2,550	2,730
Russia	710	740	840	970	1,190
Saudi Arabia	1,240	990	960	1,020	980
Serbia	70	80	100	130	110
Singapore	2,810	3,270	3,800	4,090	4,290
Slovakia	440	480	500	500	600
Slovenia	100	110	110	130	160
South Africa	270	260	270	310	330
Spain	1,500	1,700	1,600	2,080	2,470
Sri Lanka	580	490	380	330	300
Sweden	1,790	1,670	1,510	1,580	1,560
Switzerland	890	920	980	1,120	1,130
Taiwan	250	300	310	310	330
Tanzania	210	180	160	190	200
Thailand	520	590	660	700	820
Trinidad and Tobago	150	170	160	170	170
Turkey	450	450	490	560	600

Declared country of domicile	2010	2011	2012	2013	2014
Uganda	200	140	180	200	140
Ukraine	200	200	240	300	320
United Arab Emirates	790	830	920	1,090	1,300
United States of America	2,880	2,900	3,120	3,450	3,770
Vietnam	600	690	690	660	580
Zambia	150	120	150	170	150
Zimbabwe	410	350	370	360	460

I.1.11 Applicants by declared country of domicile

Selected countries, difference between cycle and 2013 cycle

Declared country of domicile	2010	2011	2012	2013	2014
Angola	-5%	-16%	10%	0%	17%
Australia	-32%	-25%	-12%	0%	6%
Austria	-13%	-1%	-3%	0%	4%
Azerbaijan	-4%	-23%	-8%	0%	33%
Bahrain	-18%	-12%	-5%	0%	-1%
Bangladesh	63%	30%	34%	0%	10%
Barbados	27%	4%	19%	0%	9%
Belgium	1%	4%	-9%	0%	7%
Bermuda	62%	28%	6%	0%	5%
Botswana	113%	43%	49%	0%	13%
Brazil	-19%	-32%	-11%	0%	15%
Brunei	28%	10%	3%	0%	16%
Bulgaria	-17%	-6%	-10%	0%	-10%
Cameroon	51%	4%	1%	0%	3%
Canada	-18%	-9%	2%	0%	-2%
Cayman Islands	-31%	-3%	0%	0%	14%
China	-20%	-10%	-2%	0%	0%
Croatia	-44%	-44%	-47%	0%	120%
Cyprus (European Union)	10%	23%	-1%	0%	-0%
Czech Republic	-13%	-4%	-4%	0%	28%
Denmark	7%	1%	-8%	0%	-2%
Egypt	-60%	-46%	-29%	0%	28%
Estonia	-15%	4%	-10%	0%	-15%
Finland	-5%	10%	-13%	0%	12%
France	12%	9%	-2%	0%	13%
Germany	32%	31%	7%	0%	-0%
Ghana	17%	0%	-7%	0%	5%
Gibraltar	-9%	-1%	-9%	0%	-4%
Greece	2%	14%	-2%	0%	-3%
Guernsey	16%	5%	0%	0%	0%
Hong Kong	-40%	-30%	-3%	0%	6%
Hungary	-46%	-47%	-26%	0%	-0%
India	-23%	-19%	-11%	0%	5%
Indonesia	-58%	-43%	-27%	0%	5%
Iran	128%	108%	75%	0%	-3%
Ireland	36%	24%	1%	0%	-4%
Isle of Man	15%	13%	6%	0%	2%
Israel	-12%	-23%	-19%	0%	-23%
Italy	-34%	-23%	-17%	0%	27%
Japan	-19%	-14%	-1%	0%	9%
Jersey	10%	13%	7%	0%	-6%
Jordan	-20%	-10%	-14%	0%	0%

Declared country of domicile	2010	2011	2012	2013	2014
Kazakhstan	65%	24%	0%	0%	2%
Kenya	5%	-2%	6%	0%	6%
Korea (South)	-19%	-6%	-5%	0%	-1%
Kuwait	-20%	-5%	2%	0%	7%
Latvia	92%	71%	24%	0%	-7%
Lebanon	-45%	-29%	-12%	0%	25%
Libyan AR	53%	5%	-10%	0%	43%
Lithuania	21%	56%	13%	0%	-9%
Luxembourg	-16%	-9%	-12%	0%	9%
Macao	-38%	-21%	8%	0%	28%
Malawi	35%	12%	3%	0%	-26%
Malaysia	-36%	-27%	-21%	0%	28%
Malta	28%	21%	-9%	0%	-15%
Mauritius	30%	18%	17%	0%	27%
Mexico	-5%	-11%	-11%	0%	-1%
Morocco	-41%	-19%	-17%	0%	26%
Nepal	36%	25%	36%	0%	-18%
Netherlands	6%	4%	-8%	0%	2%
New Zealand	-23%	-5%	-7%	0%	11%
Nigeria	-1%	-3%	-8%	0%	-6%
Norway	-23%	-13%	-6%	0%	1%
Oman	-22%	-22%	-11%	0%	33%
Pakistan	24%	11%	4%	0%	-1%
Philippines	-13%	-18%	-10%	0%	8%
Poland	-5%	-5%	-16%	0%	17%
Portugal	-26%	-14%	-19%	0%	8%
Qatar	-39%	-26%	-19%	0%	-8%
Romania	-17%	16%	7%	0%	7%
Russia	-27%	-24%	-13%	0%	24%
Saudi Arabia	22%	-3%	-6%	0%	-4%
Serbia	-48%	-42%	-27%	0%	-14%
Singapore	-31%	-20%	-7%	0%	5%
Slovakia	-12%	-3%	0%	0%	20%
Slovenia	-24%	-14%	-15%	0%	19%
South Africa	-13%	-17%	-12%	0%	8%
Spain	-28%	-18%	-23%	0%	19%
Sri Lanka	76%	49%	16%	0%	-7%
Sweden	13%	6%	-4%	0%	-1%
Switzerland	-21%	-18%	-13%	0%	1%
Taiwan	-19%	-3%	2%	0%	8%
Tanzania	8%	-8%	-15%	0%	5%
Thailand	-26%	-16%	-6%	0%	18%
Trinidad and Tobago	-9%	1%	-8%	0%	-2%
Turkey	-21%	-21%	-14%	0%	7%

Declared country of domicile	2010	2011	2012	2013	2014
Uganda	2%	-28%	-7%	0%	-31%
Ukraine	-34%	-34%	-21%	0%	8%
United Arab Emirates	-27%	-24%	-15%	0%	20%
United States of America	-16%	-16%	-10%	0%	9%
Vietnam	-9%	4%	5%	0%	-13%
Zambia	-11%	-26%	-9%	0%	-12%
Zimbabwe	15%	-2%	2%	0%	28%

I.1.12 Technical notes and definitions

Applicants have been able to submit applications for all 2014 courses since early September.

Counts of the number of applicants reported have been rounded to the nearest 10 applicants, this may result in instances where totals do not equal the sum of the components. Proportional changes have been rounded to the nearest whole percentage point.

The Channel Islands and the Isle of Man are assigned as 'Not EU'. The previous June statistical release assigned the Channel Islands and Isle of Man in the 'UK' therefore the figures for earlier cycles may not match the previous June statistical release.

Age

This statistical release uses country-specific age definitions which align with the cut off points for school/college cohorts within the different administrations of the UK. For England and Wales ages are defined on the 31 August, for Northern Ireland on the 1 July and for Scotland on the 28 February the following year. Defining ages in this way matches the assignment of children to school cohorts. For applicants outside of the UK the cohort cut off for England and Wales has been used.

Applicant

A person who has made an application in the UCAS system during the cycle reported, this includes those who submit applications for deferred entry.

Application

An application to a course at an institution made by an applicant. Applicants may make up to five applications.

Country of institution

The UK country of the institution applied to.

Domicile

Declared area of permanent residence. The Channel Islands and the Isle of Man have been assigned as 'Not EU'.

First time applicant

An applicant that did not apply to the UCAS scheme in the previous cycle.

Reapplicant

An applicant that applied to the UCAS scheme in the previous cycle.

Subject group

The JACS3 classification used to classify courses into subject groups.

Tariff group of institution

Institutions are grouped as higher, medium or lower tariff based on their average levels of attainment of their accepted applicants (summarised through UCAS Tariff points) in recent cycles. Each group of institutions accounted for around a third of all UK 18 year old acceptances in recent cycles.