

Confidential analysis for Registered centres 00000 Example Sixth Form College

Cycles: 2018 — 2022

Cycle Reference Point: End of cycle

Applicant coverage: This report contains data on all applicants from the following named registered centres.

00001 Example Centre 1
00002 Example Centre 2
00003 Example Centre 3
00004 Example Centre 4
00005 Example Centre 5
00006 Example Centre 6
00007 Example Centre 7
00008 Example Centre 8
00009 Example Centre 9
00010 Example Centre 10

Contents:

1. Overview
 2. Deadline applied by
 3. Choices, decisions, offers and replies
 4. Acceptance routes
 5. Acceptances and offers by provider tariff group
 6. Acceptances and offers by provider mission group
 7. Acceptances and offers by sex
 8. Acceptances and offers by ethnic group
 9. Acceptances and offers by qualification
 10. Acceptances and offers by HE provider
 11. Acceptances and offers by JACS3 subject group
 12. Acceptances and offers by detailed subject group
 13. Acceptances and offers by CAH1 subject group
 14. Acceptances and offers by CAH3 subject group
 15. Decline my place
 16. Clearing Plus
- Technical notes and definitions

The Competitor Report contains aggregated data for the registered centres above. To see your own data please use your copy of the Progression Report.

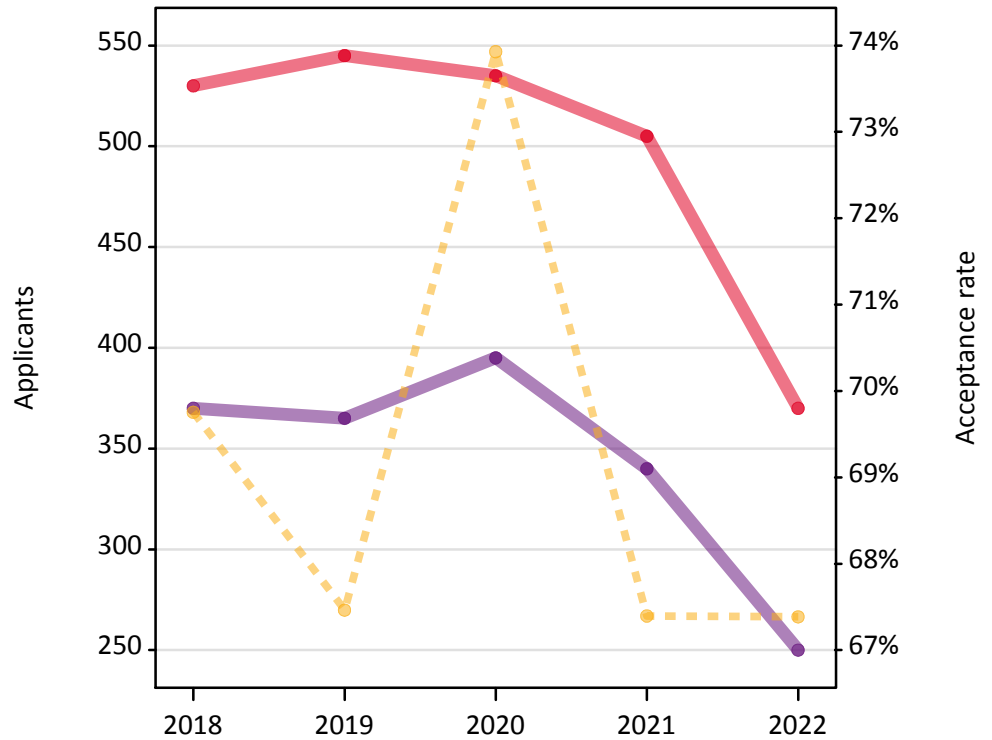
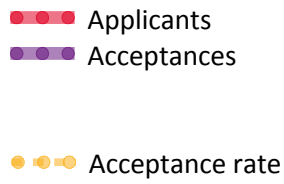
Note: All numbers are rounded to the nearest 5.

Note: To avoid the disclosure of information about any individual the following measures are taken:

- Percentages are reported as 0% if the numerator is less than 5.
- Percentages are reported as 100% if the numerator is within 5 of the denominator.

1. Overview

1.1 Applicants and acceptances



1.2 Overview stats

	2018	2019	2020	2021	2022
Applicants	530	545	535	505	370
Acceptances	370	365	395	340	250
Not placed	140	155	130	145	105
Withdrawn	20	25	10	15	20
Acceptance rate	69.8%	67.5%	73.9%	67.4%	67.4%

1.3 Applicants by application type

	2018	2019	2020	2021	2022
Main scheme applicants	525	540	530	495	370
Direct to Clearing applicants	5	0	10	5	0

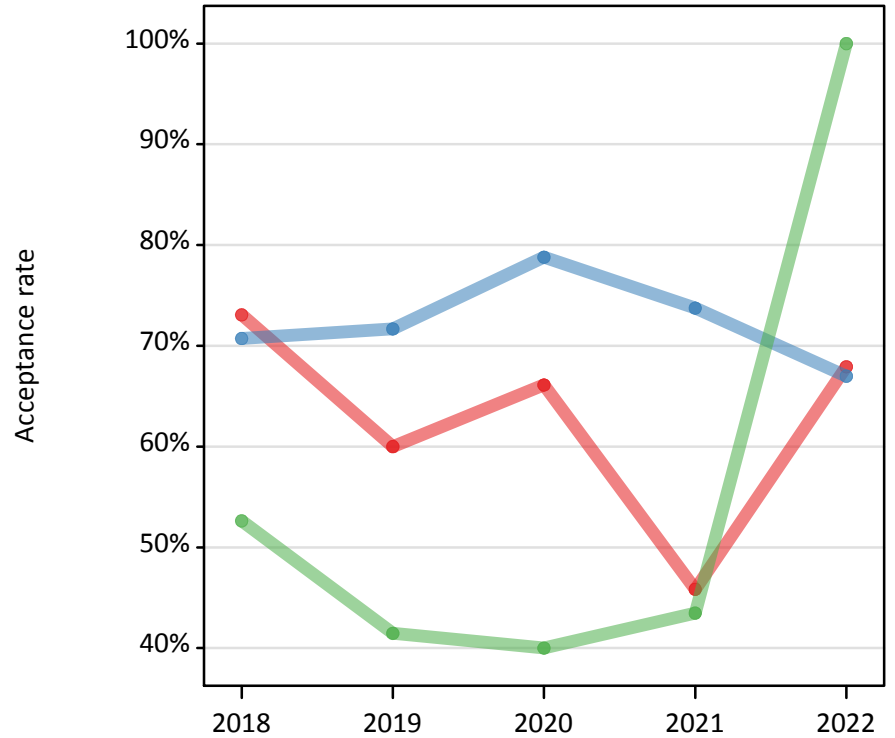
1.4 Acceptances by entry year

	2018	2019	2020	2021	2022
Entering same cycle	350	355	365	325	240
Deferred entry	20	10	30	15	10
Deferral rate	4.9%	2.7%	7.6%	4.1%	4.4%

2. Deadline applied by

2.1 Acceptance rate by deadline applied by

- by Oct 15 deadline
- after Oct 15, by Jan ECD
- after Jan ECD, by Jun 30
- after Jun 30 (Direct to Clearing)



2.2 Applicants by deadline applied by

Deadline	2018	2019	2020	2021	2022
by Oct 15 deadline	80	95	120	95	55
after Oct 15, by Jan ECD	410	405	380	375	310
after Jan ECD, by Jun 30	40	40	25	25	10
after Jun 30 (Direct to Clearing)	5	0	10	5	0

2.3 Proportion of applicants by deadline applied by

Deadline	2018	2019	2020	2021	2022
by Oct 15 deadline	14.7%	17.5%	22.5%	19.1%	14.3%
after Oct 15, by Jan ECD	77.5%	74.6%	71.1%	75.0%	83.3%
after Jan ECD, by Jun 30	7.2%	7.5%	4.7%	4.6%	2.2%
after Jun 30 (Direct to Clearing)	0.0%	0.0%	1.7%	1.4%	0.0%

2.4 Number of applicants offered by deadline applied by

Applicants who received at least one offer to a main scheme choice

Deadline	2018	2019	2020	2021	2022
by Oct 15 deadline	75	85	115	85	50
after Oct 15, by Jan ECD	405	400	375	375	305
after Jan ECD, by Jun 30	35	30	20	15	5

2.5 Offer rate (applicant level) by deadline applied by

Applicants who received at least one offer to a main scheme choice

Deadline	2018	2019	2020	2021	2022
by Oct 15 deadline	100.0%	91.6%	93.4%	88.5%	100.0%
after Oct 15, by Jan ECD	98.3%	98.8%	98.4%	100.0%	100.0%
after Jan ECD, by Jun 30	86.8%	78.0%	100.0%	69.6%	100.0%

2.6 Number of acceptances by deadline applied by

Deadline	2018	2019	2020	2021	2022
by Oct 15 deadline	55	55	80	45	35
after Oct 15, by Jan ECD	290	290	300	280	205
after Jan ECD, by Jun 30	20	15	10	10	5
after Jun 30 (Direct to Clearing)	0	0	5	5	0

2.7 Acceptance rate by deadline applied by

Deadline	2018	2019	2020	2021	2022
by Oct 15 deadline	73.1%	60.0%	66.1%	45.8%	67.9%
after Oct 15, by Jan ECD	70.7%	71.7%	78.8%	73.7%	67.0%
after Jan ECD, by Jun 30	52.6%	41.5%	40.0%	43.5%	100.0%
after Jun 30 (Direct to Clearing)	0.0%	0.0%	100.0%	100.0%	0.0%

3. Choices, decisions, offers and replies

Main scheme choices only (submitted by 30 June deadline). Decisions and replies taken as at 30 June.

3.1 Applicants by number of choices

Number of choices	2018	2019	2020	2021	2022
1	10	10	5	5	5
2	5	5	0	10	0
3	10	5	5	5	5
4	10	10	20	15	10
5	495	510	495	460	350
All	525	540	530	495	370

3.2 Provider decisions to choices

Provider decision	2018	2019	2020	2021	2022
Offer - Conditional	1,855	1,900	1,790	1,705	1,275
Offer - Unconditional	100	75	100	65	35
Reject	505	550	615	555	460
Other	100	105	75	80	50
All	2,560	2,635	2,580	2,400	1,820

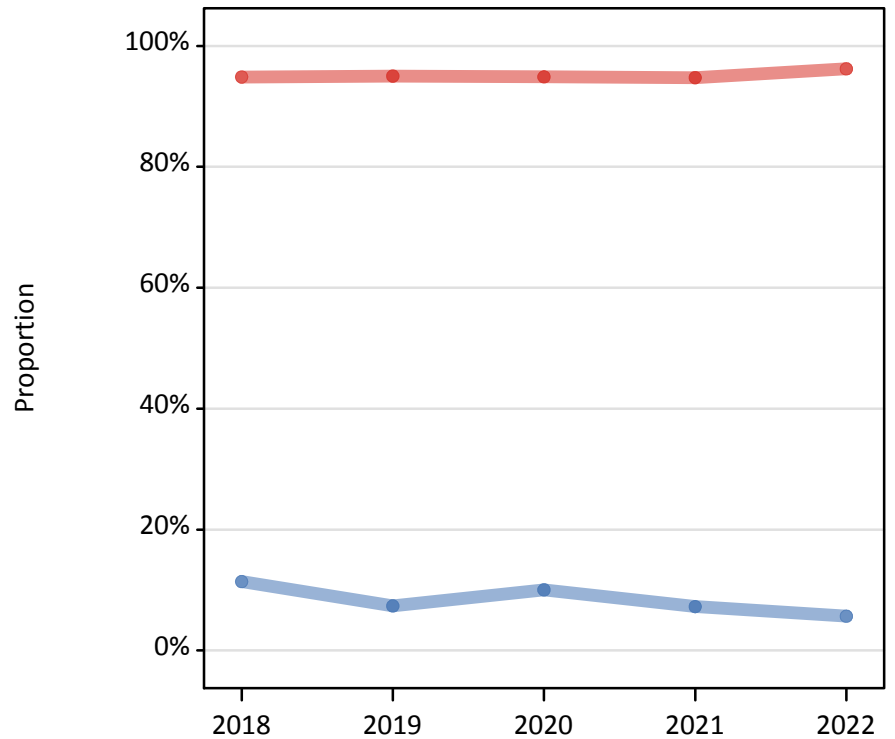
3.3 Proportion of choices by decisions

Decision	2018	2019	2020	2021	2022
Offer - Conditional	72.4%	72.2%	69.4%	71.0%	70.1%
Offer - Unconditional	4.0%	2.9%	3.8%	2.7%	1.8%
Reject	19.6%	20.9%	23.9%	23.0%	25.2%
Other	4.0%	4.0%	2.9%	3.2%	2.9%

3.4 Proportion of main scheme applicants with a conditional or unconditional offer

At least one conditional or unconditional offer

- at least one conditional offer
- at least one unconditional offer



3.5 Applicants with an offer

At least one offer

	2018	2019	2020	2021	2022
Main scheme applicants	525	540	530	495	370
Applicants with an offer	510	520	510	475	360
- Applicants with a conditional offer	500	515	500	470	355
- Applicants with an unconditional offer	60	40	55	35	20
Proportion of applicants with an offer	97.0%	95.9%	96.6%	95.6%	97.8%
- Proportion of applicants with a conditional offer	94.9%	95.0%	94.9%	94.8%	96.2%
- Proportion of applicants with an unconditional offer	11.4%	7.4%	10.0%	7.3%	5.7%

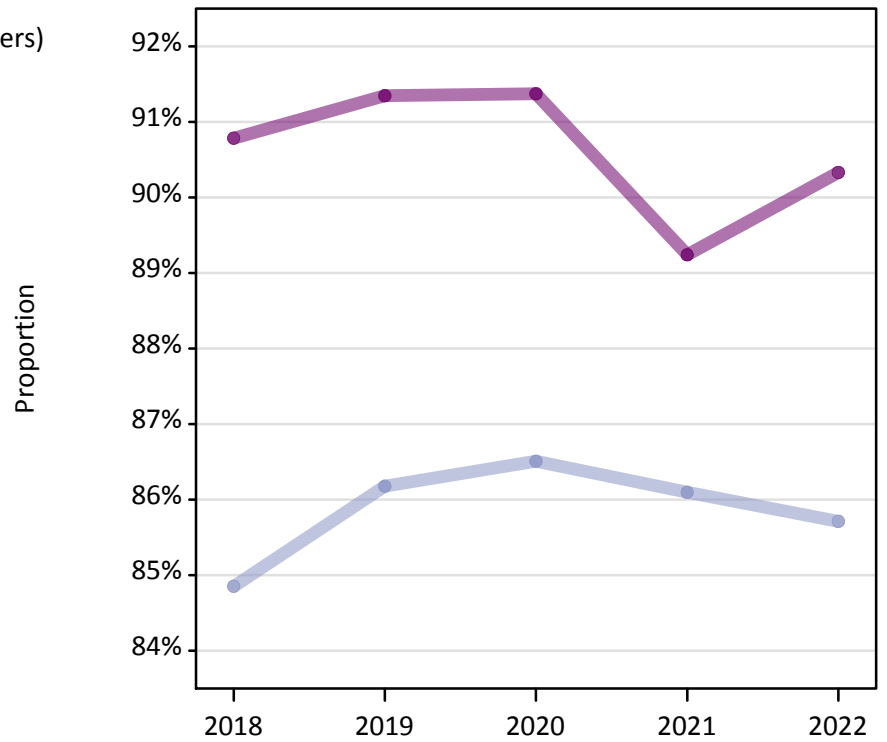
3.6 Applicants by number of offers received

Regardless of number of choices

Number of offers (conditional or unconditional)	2018	2019	2020	2021	2022
0	15	20	20	20	10
1	30	30	45	30	20
2	45	55	50	55	60
3	100	95	95	90	75
4	150	150	150	145	95
5	190	190	170	160	110

3.7 Proportion of main scheme applicants with a firm or insurance choice

- Set a firm choice (at least one offer)
- Set an insurance choice (at least two offers)



3.8 Applicants with a firm or insurance choice

	2018	2019	2020	2021	2022
Applicants with at least one offer	510	520	510	475	360
Applicants with a firm choice	465	475	465	425	325
Proportion of applicants with a firm choice	90.8%	91.3%	91.4%	89.2%	90.3%
Applicants with at least two offers	480	490	465	445	345
Applicants with an insurance choice	410	425	405	385	295
Proportion of applicants with an insurance choice	84.9%	86.2%	86.5%	86.1%	85.7%

3.9 Applicant replies to offers

Applicant Reply	2018	2019	2020	2021	2022
Firm	465	475	465	425	325
Insurance	410	425	405	385	295
Decline	1,045	1,035	995	945	670
Other	35	40	20	20	15
All	1,955	1,975	1,885	1,770	1,305

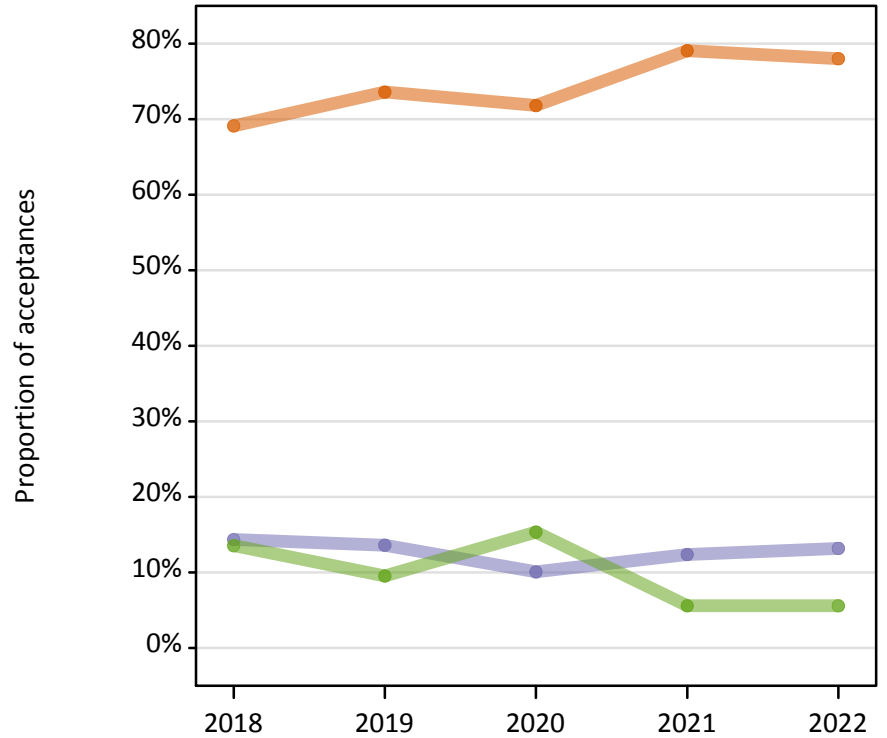
3.10 Proportion of offers by reply

Applicant Reply	2018	2019	2020	2021	2022
Firm	23.7%	24.0%	24.7%	23.9%	25.0%
Insurance	20.9%	21.4%	21.4%	21.7%	22.5%
Decline	53.5%	52.4%	52.7%	53.4%	51.3%
Other	1.9%	2.1%	1.2%	1.0%	1.2%

4. Acceptance routes

4.1 Proportion of acceptances by route

- Firm choice
- Insurance choice
- Main scheme Clearing
- Extra
- Adjustment
- Direct Clearing
- Other main scheme choice



4.2 Acceptances by route

Route	2018	2019	2020	2021	2022
Firm choice	255	270	285	270	195
Insurance choice	55	50	40	40	35
Main scheme Clearing	50	35	60	20	15
Extra	5	0	0	0	0
Adjustment	0	5	0	0	0
Direct Clearing	0	0	5	5	0
Other main scheme choice	5	5	5	5	5
All	370	365	395	340	250

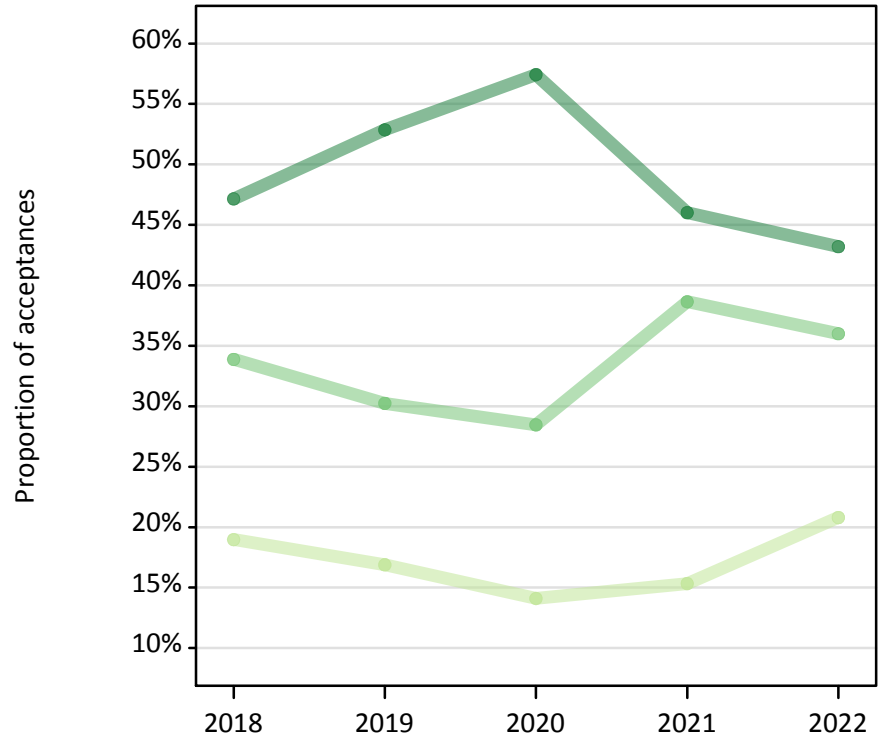
4.3 Proportion of acceptances by route

Route	2018	2019	2020	2021	2022
Firm choice	69.1%	73.6%	71.8%	79.1%	78.0%
Insurance choice	14.4%	13.6%	10.1%	12.4%	13.2%
Main scheme Clearing	13.6%	9.5%	15.4%	5.6%	5.6%
Extra	0.0%	0.0%	0.0%	0.0%	0.0%
Adjustment	0.0%	0.0%	0.0%	0.0%	0.0%
Direct Clearing	0.0%	0.0%	1.5%	2.1%	0.0%
Other main scheme choice	1.4%	1.9%	0.0%	0.0%	2.0%

5. Acceptances and offers by provider tariff group

5.1 Proportion of acceptances by provider tariff group

- Higher tariff
- Medium tariff
- Lower tariff



5.2 Acceptances by provider tariff group

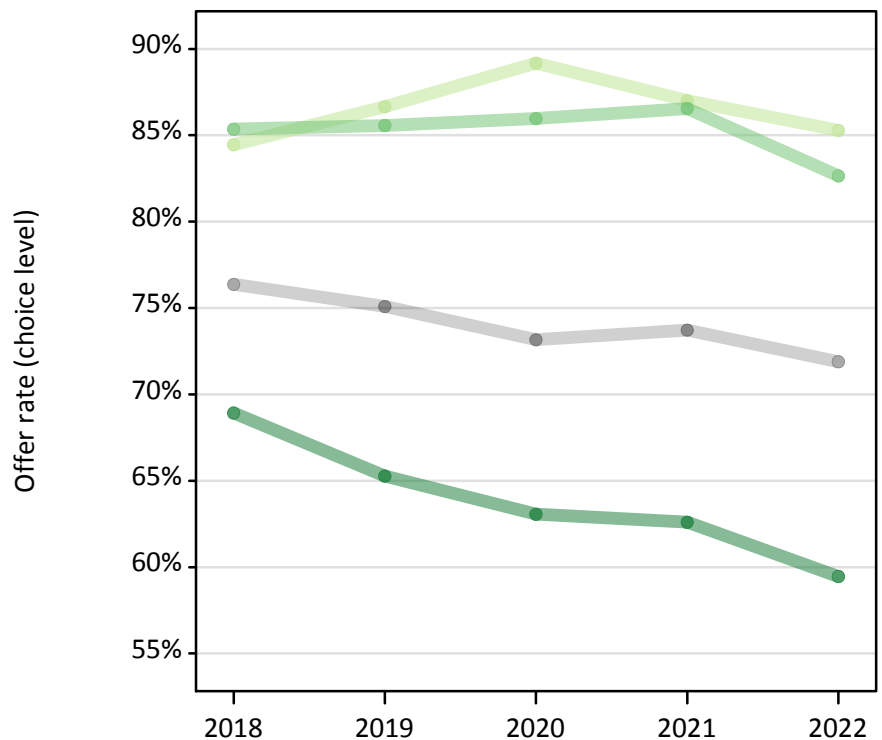
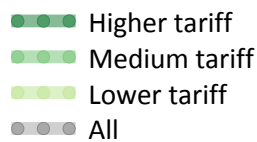
Provider tariff group	2018	2019	2020	2021	2022
Lower tariff	70	60	55	50	50
Medium tariff	125	110	115	130	90
Higher tariff	175	195	230	155	110
All	370	365	395	340	250

5.3 Proportion of acceptances by provider tariff group

Provider tariff group	2018	2019	2020	2021	2022
Lower tariff	19.0%	16.9%	14.1%	15.3%	20.8%
Medium tariff	33.9%	30.2%	28.5%	38.6%	36.0%
Higher tariff	47.2%	52.9%	57.4%	46.0%	43.2%

5.4 Offer rate (choice level) by provider tariff group

Offer rate for main scheme applicant choices by provider tariff group



5.5 Offers (choice level) by provider tariff group

Number of offers for main scheme applicant choices by provider tariff group

Provider tariff group	2018	2019	2020	2021	2022
Lower tariff	400	410	355	355	335
Medium tariff	605	665	590	605	445
Higher tariff	945	905	945	810	530
All	1,955	1,975	1,885	1,770	1,305

5.6 Offer rate (choice level) by provider tariff group

Offer rate for main scheme applicant choices by provider tariff group

Provider tariff group	2018	2019	2020	2021	2022
Lower tariff	84.5%	86.7%	89.2%	87.0%	85.3%
Medium tariff	85.4%	85.6%	86.0%	86.6%	82.6%
Higher tariff	68.9%	65.3%	63.1%	62.6%	59.5%
All	76.4%	75.1%	73.2%	73.7%	71.9%

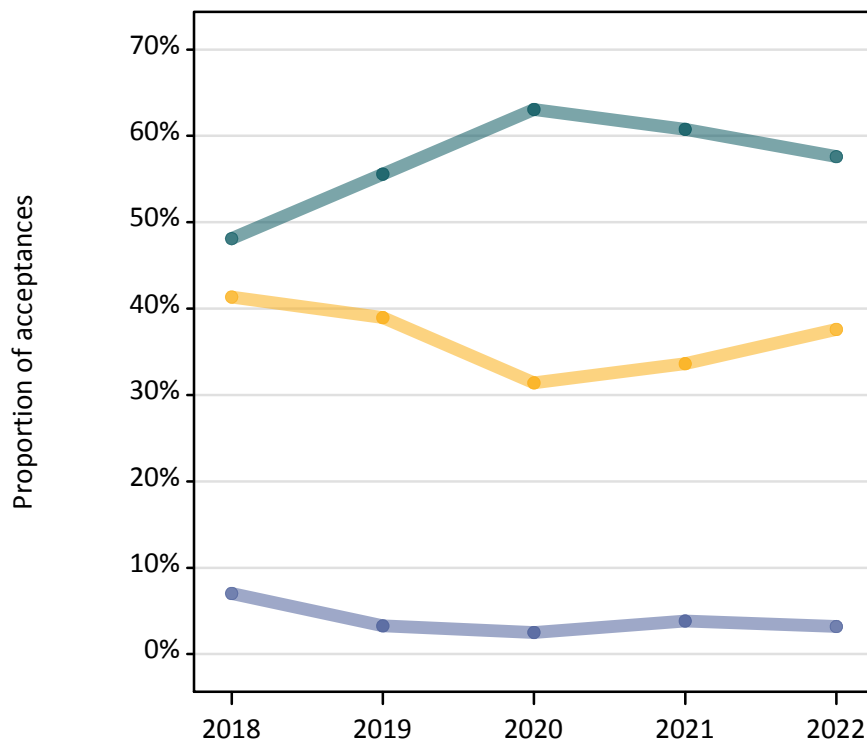
5.7 Main scheme applicant choices by provider tariff group

Number of main scheme applicant choices by provider tariff group

Provider tariff group	2018	2019	2020	2021	2022
Lower tariff	475	470	395	410	395
Medium tariff	710	775	685	700	535
Higher tariff	1,375	1,385	1,495	1,295	890
All	2,560	2,635	2,580	2,400	1,820

6. Acceptances and offers by provider mission group

6.1 Proportion of acceptances by provider mission group



6.2 Acceptances by provider mission group

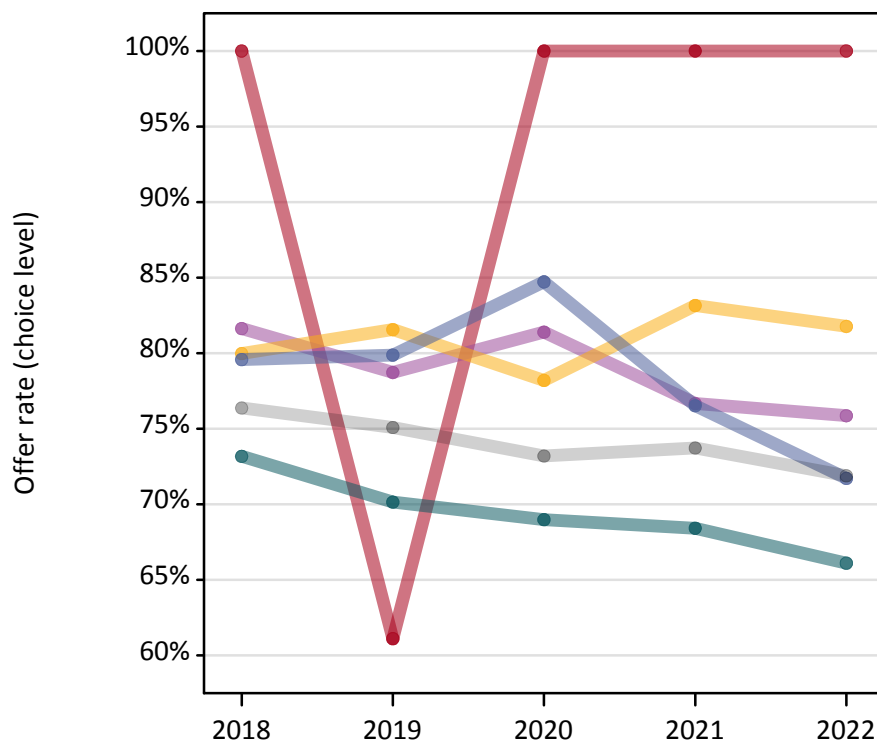
Provider mission group	2018	2019	2020	2021	2022
GuildHE	10	0	5	5	5
MillionPlus	5	5	5	5	0
Other	155	145	125	115	95
Russell Group	180	205	250	205	145
University Alliance	25	10	10	15	10
All	370	365	400	340	250

6.3 Proportion of acceptances by provider mission group

Provider mission group	2018	2019	2020	2021	2022
GuildHE	2.2%	0.0%	1.5%	0.0%	0.0%
MillionPlus	1.4%	1.9%	1.5%	0.0%	0.0%
Other	41.4%	39.0%	31.4%	33.6%	37.6%
Russell Group	48.1%	55.6%	63.1%	60.8%	57.6%
University Alliance	7.0%	3.3%	2.5%	3.8%	3.2%

6.4 Offer rate (choice level) by provider mission group

Offer rate for main scheme applicant choices by provider mission group



6.5 Offers (choice level) by provider mission group

Number of offers for main scheme applicant choices by provider mission group

Provider mission group	2018	2019	2020	2021	2022
GuildHE	20	10	20	15	15
MillionPlus	40	35	35	25	20
Other	725	795	655	630	490
Russell Group	1,015	1,000	1,060	1,010	710
University Alliance	150	135	120	90	70
All	1,955	1,980	1,890	1,770	1,305

6.6 Offer rate (choice level) by provider mission group

Offer rate for main scheme applicant choices by provider mission group

Provider mission group	2018	2019	2020	2021	2022
GuildHE	100.0%	61.1%	100.0%	100.0%	100.0%
MillionPlus	81.6%	78.7%	81.4%	76.7%	75.9%
Other	80.0%	81.6%	78.2%	83.2%	81.8%
Russell Group	73.2%	70.1%	69.0%	68.4%	66.1%
University Alliance	79.6%	79.9%	84.7%	76.5%	71.7%
All	76.4%	75.1%	73.2%	73.7%	71.9%

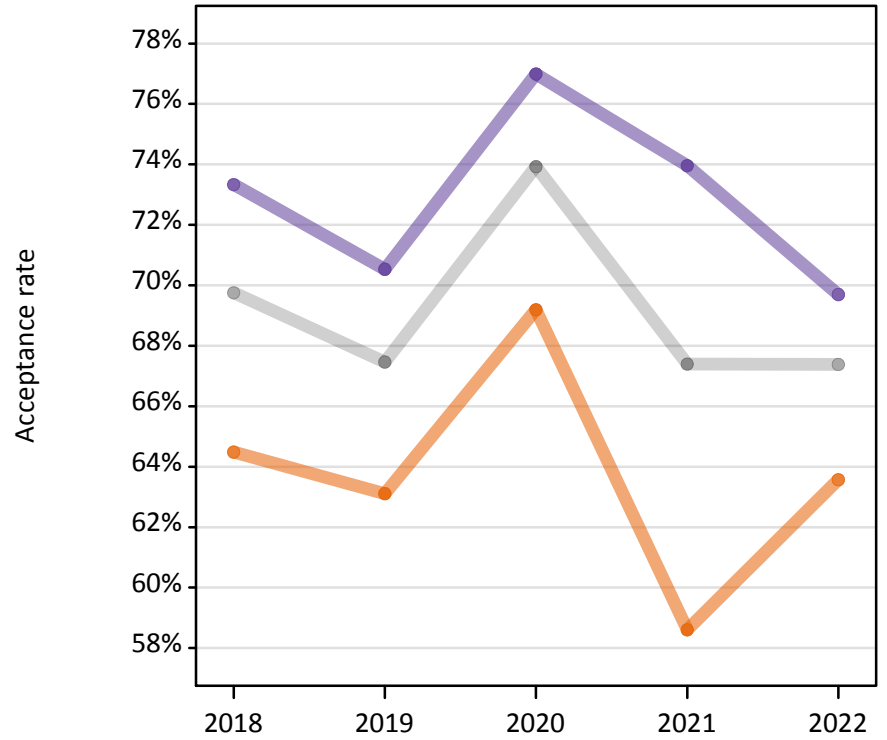
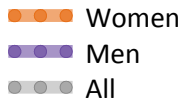
6.7 Main scheme applicant choices by provider mission group

Number of main scheme applicant choices by provider mission group

Provider mission group	2018	2019	2020	2021	2022
GuildHE	25	20	25	20	15
MillionPlus	50	45	45	30	30
Other	910	975	835	760	600
Russell Group	1,385	1,425	1,535	1,480	1,075
University Alliance	190	170	145	115	100
All	2,560	2,635	2,580	2,400	1,820

7. Acceptances by sex

7.1 Acceptance rate by sex



7.2 Applicants by sex

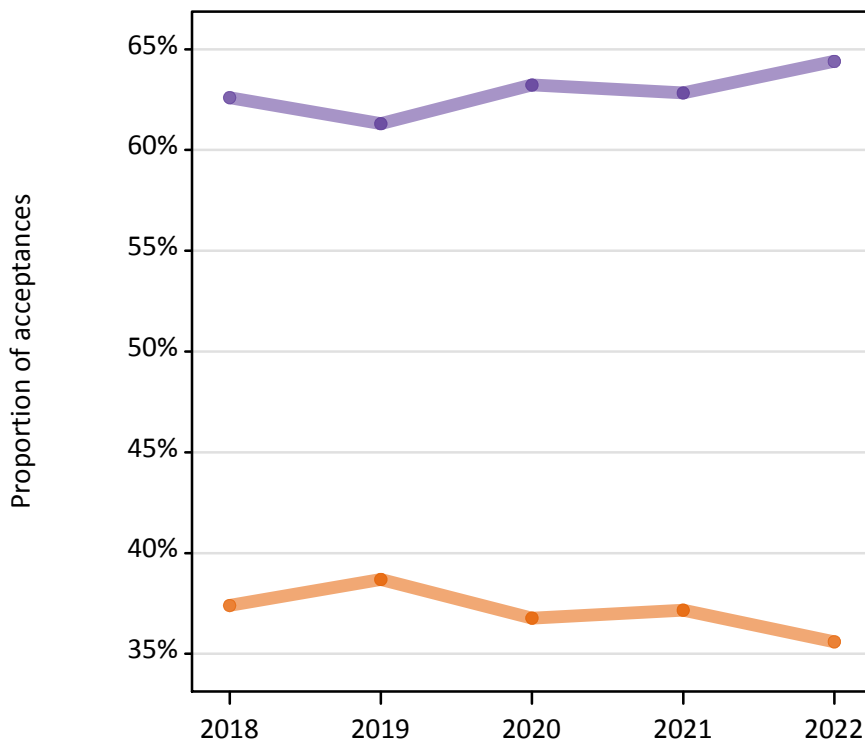
Sex	2018	2019	2020	2021	2022
Women	215	225	210	215	140
Men	315	320	325	290	230
All	530	545	535	505	370

7.3 Acceptance rate by sex

Sex	2018	2019	2020	2021	2022
Women	64.5%	63.1%	69.2%	58.6%	63.6%
Men	73.3%	70.5%	77.0%	74.0%	69.7%
All	69.8%	67.5%	73.9%	67.4%	67.4%

7.4 Proportion of acceptances by sex

● Women
● Men



7.5 Acceptances by sex

Sex	2018	2019	2020	2021	2022
Women	140	140	145	125	90
Men	230	225	250	215	160
All	370	365	395	340	250

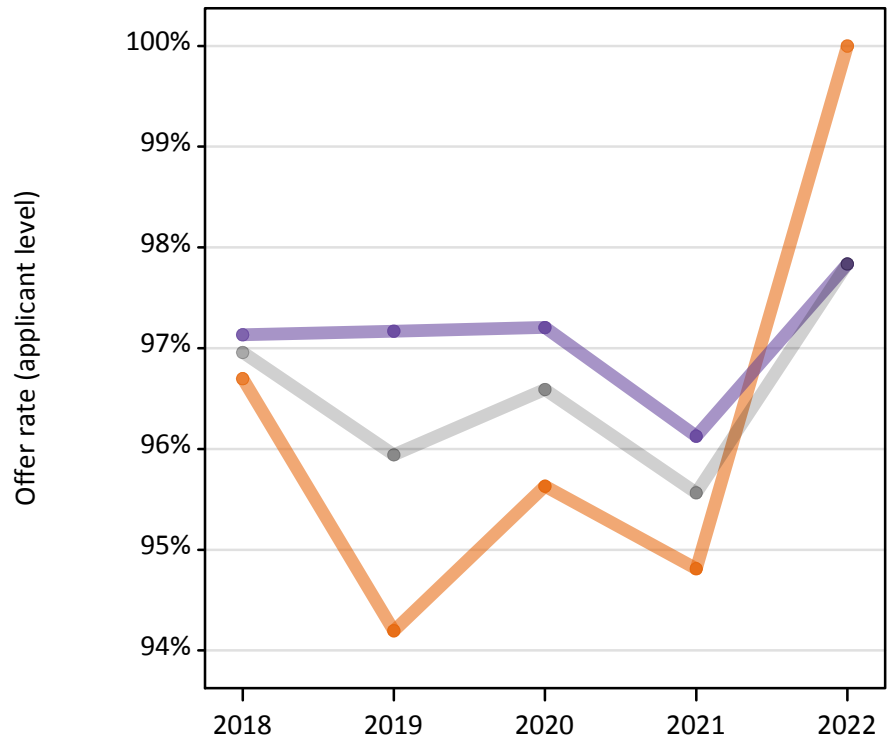
7.6 Proportion of acceptances by sex

Sex	2018	2019	2020	2021	2022
Women	37.4%	38.7%	36.8%	37.2%	35.6%
Men	62.6%	61.3%	63.2%	62.8%	64.4%

7.7 Offer rate (applicant level) by sex

Offer rate for main scheme applicants by sex

● Women
● Men
● All



7.8 Offers (applicant level) by sex

Number of main scheme applicants with offers by sex

Sex	2018	2019	2020	2021	2022
Women	205	210	195	200	135
Men	305	310	315	275	225
All	510	520	510	475	360

7.9 Offer rate (applicant level) by sex

Offer rate for main scheme applicants by sex

Sex	2018	2019	2020	2021	2022
Women	96.7%	94.2%	95.6%	94.8%	100.0%
Men	97.1%	97.2%	97.2%	96.1%	97.8%
All	97.0%	95.9%	96.6%	95.6%	97.8%

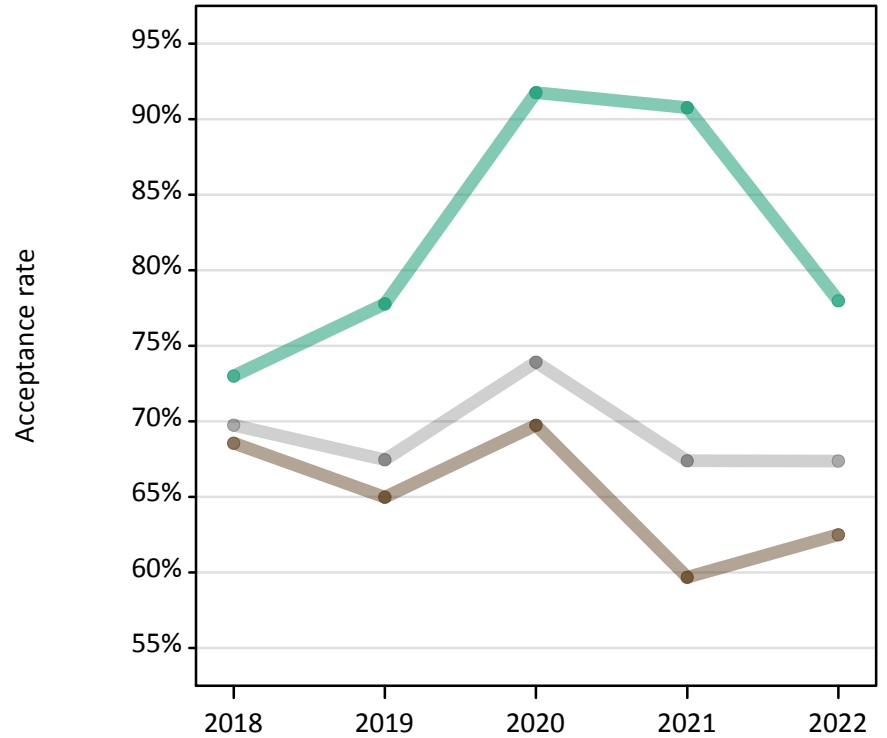
7.10 Main scheme applicants by sex

Number of main scheme applicants by sex

Sex	2018	2019	2020	2021	2022
Women	210	225	205	210	140
Men	315	320	320	285	230
All	525	540	530	495	370

8. Acceptances by ethnic group

8.1 Acceptance rate by ethnic group



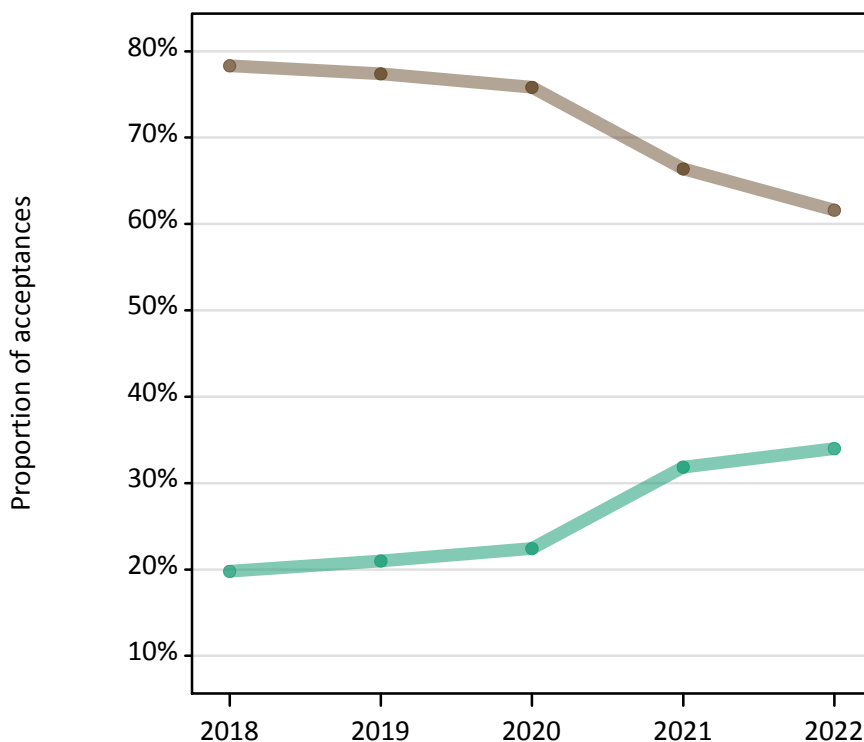
8.2 Applicants by ethnic group

Ethnic group	2018	2019	2020	2021	2022
Asian	5	5	5	5	5
Black	0	0	0	5	10
Mixed	0	0	0	0	0
Other	0	0	0	0	0
Unknown	425	435	435	375	250
White	100	100	95	120	110
All	530	545	535	505	370

8.3 Acceptance rate by ethnic group

Ethnic group	2018	2019	2020	2021	2022
Asian	100.0%	0.0%	0.0%	0.0%	0.0%
Black	0.0%	0.0%	0.0%	0.0%	100.0%
Mixed	0.0%	0.0%	0.0%	0.0%	0.0%
Other	0.0%	0.0%	0.0%	0.0%	0.0%
Unknown	68.6%	65.0%	69.7%	59.7%	62.5%
White	73.0%	77.8%	91.8%	90.8%	78.0%
All	69.8%	67.5%	73.9%	67.4%	67.4%

8.4 Proportion of acceptances by ethnic group



8.5 Acceptances by ethnic group

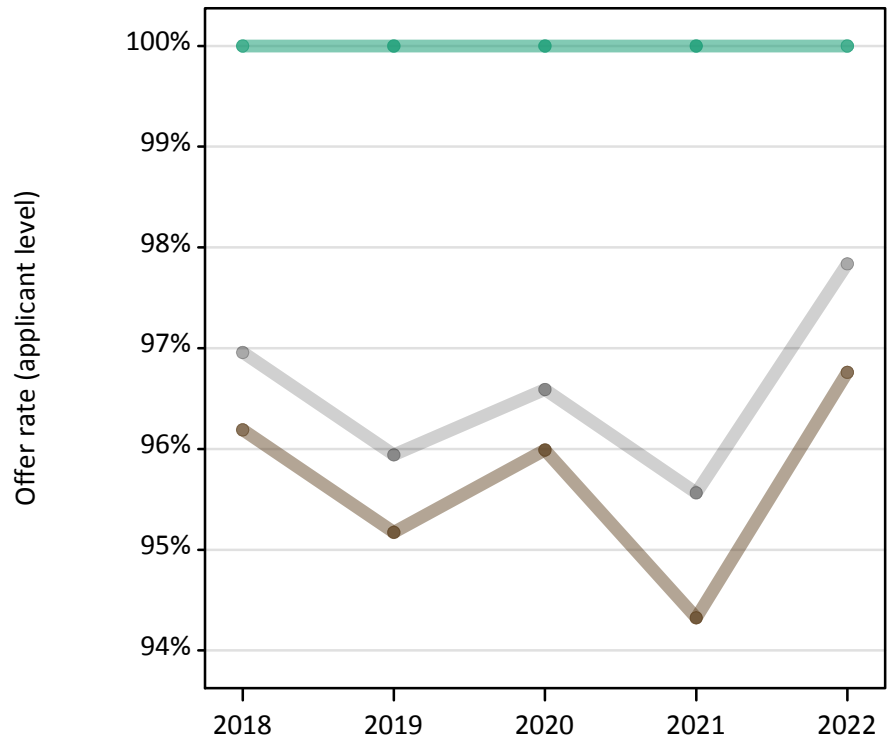
Ethnic Group	2018	2019	2020	2021	2022
Asian	5	5	5	5	5
Black	0	0	0	0	5
Mixed	0	0	0	0	0
Other	0	0	0	0	0
Unknown	290	285	300	225	155
White	75	75	90	110	85
All	370	365	395	340	250

8.6 Proportion of acceptances by ethnic group

Ethnic group	2018	2019	2020	2021	2022
Asian	0.0%	0.0%	0.0%	0.0%	0.0%
Black	0.0%	0.0%	0.0%	0.0%	2.0%
Mixed	0.0%	0.0%	0.0%	0.0%	0.0%
Other	0.0%	0.0%	0.0%	0.0%	0.0%
Unknown	78.3%	77.4%	75.8%	66.4%	61.6%
White	19.8%	21.0%	22.4%	31.9%	34.0%

8.7 Offer rate (applicant level) by ethnic group

Offer rate for main scheme applicants by ethnic group



8.8 Offers (applicant level) by ethnic group

Number of main scheme applicants with offers by ethnic group

Ethnic group	2018	2019	2020	2021	2022
Asian	5	5	5	5	5
Black	0	0	0	0	10
Mixed	0	0	0	0	0
Other	0	0	0	0	0
Unknown	405	415	405	350	240
White	100	100	95	120	110
All	510	520	510	475	360

8.9 Offer rate (applicant level) by ethnic group

Offer rate for main scheme applicants by ethnic group

Ethnic group	2018	2019	2020	2021	2022
Asian	100.0%	0.0%	0.0%	0.0%	0.0%
Black	0.0%	0.0%	0.0%	0.0%	100.0%
Mixed	0.0%	0.0%	0.0%	0.0%	0.0%
Other	0.0%	0.0%	0.0%	0.0%	0.0%
Unknown	96.2%	95.2%	96.0%	94.3%	96.8%
White	100.0%	100.0%	100.0%	100.0%	100.0%
All	97.0%	95.9%	96.6%	95.6%	97.8%

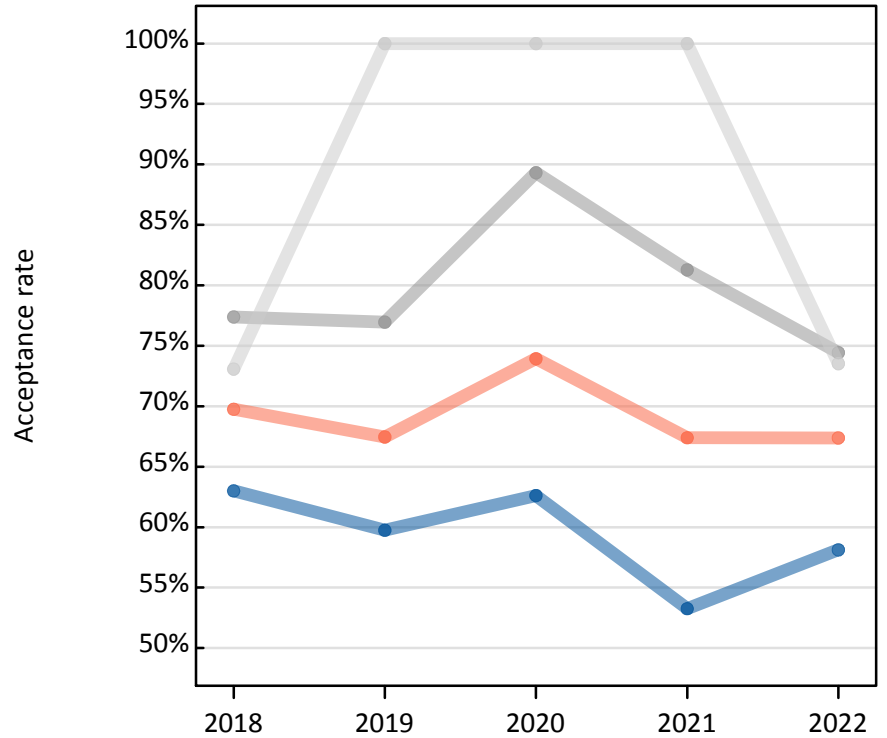
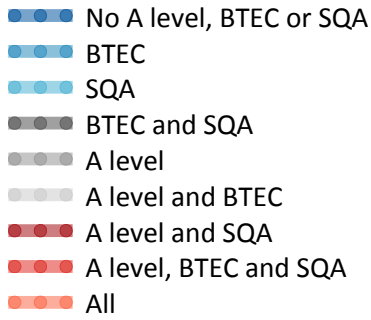
8.10 Applicants by ethnic group

Number of main scheme applicants by ethnic group

Ethnic group	2018	2019	2020	2021	2022
Asian	5	5	5	5	5
Black	0	0	0	5	10
Mixed	0	0	0	0	0
Other	0	0	0	0	0
Unknown	420	435	425	370	245
White	100	100	95	120	110
All	525	540	530	495	370

9. Acceptances by qualification

9.1 Acceptance rate by qualification



9.2 Applicants by qualification

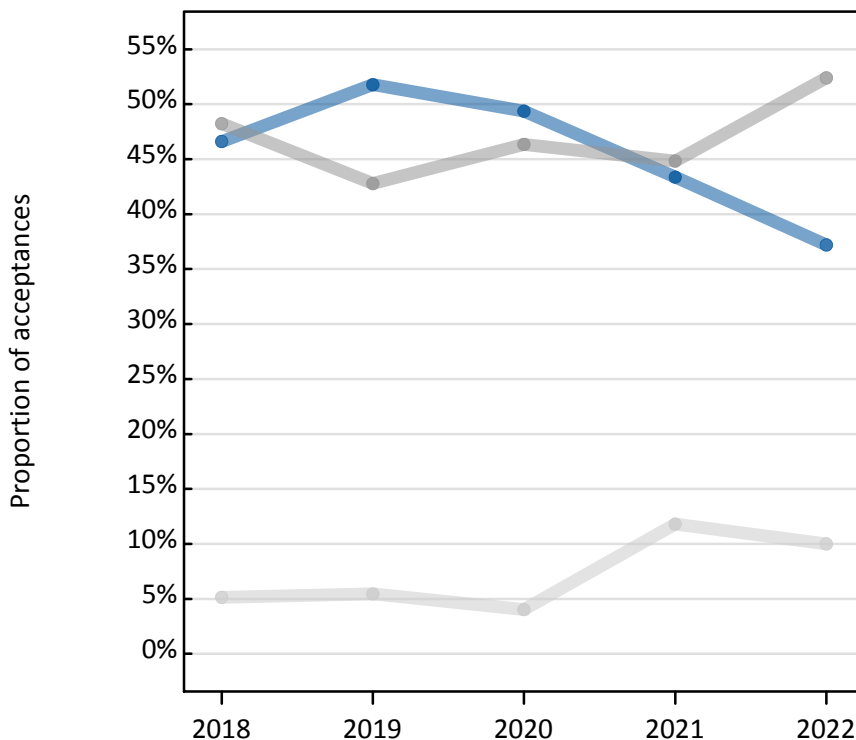
Qualification	2018	2019	2020	2021	2022
No A level, BTEC or SQA	275	320	315	275	160
BTEC	0	0	0	0	0
SQA	0	0	0	0	0
BTEC and SQA	0	0	0	0	0
A level	230	205	205	185	175
A level and BTEC	25	20	15	40	35
A level and SQA	0	0	0	0	0
A level, BTEC and SQA	0	0	0	0	0
All	530	545	535	505	370

9.3 Acceptance rate by qualification

Qualification	2018	2019	2020	2021	2022
No A level, BTEC or SQA	63.0%	59.7%	62.6%	53.3%	58.1%
BTEC	0.0%	0.0%	0.0%	0.0%	0.0%
SQA	0.0%	0.0%	0.0%	0.0%	0.0%
BTEC and SQA	0.0%	0.0%	0.0%	0.0%	0.0%
A level	77.4%	77.0%	89.3%	81.3%	74.4%
A level and BTEC	73.1%	100.0%	100.0%	100.0%	73.5%
A level and SQA	0.0%	0.0%	0.0%	0.0%	0.0%
A level, BTEC and SQA	0.0%	0.0%	0.0%	0.0%	0.0%
All	69.8%	67.5%	73.9%	67.4%	67.4%

9.4 Proportion of acceptances by qualification

- No A level, BTEC or SQA
- BTEC
- SQA
- BTEC and SQA
- A level
- A level and BTEC
- A level and SQA
- A level, BTEC and SQA



9.5 Acceptances by qualification

Qualification	2018	2019	2020	2021	2022
No A level, BTEC or SQA	170	190	195	145	95
BTEC	0	0	0	0	0
SQA	0	0	0	0	0
BTEC and SQA	0	0	0	0	0
A level	180	155	185	150	130
A level and BTEC	20	20	15	40	25
A level and SQA	0	0	0	0	0
A level, BTEC and SQA	0	0	0	0	0
All	370	365	395	340	250

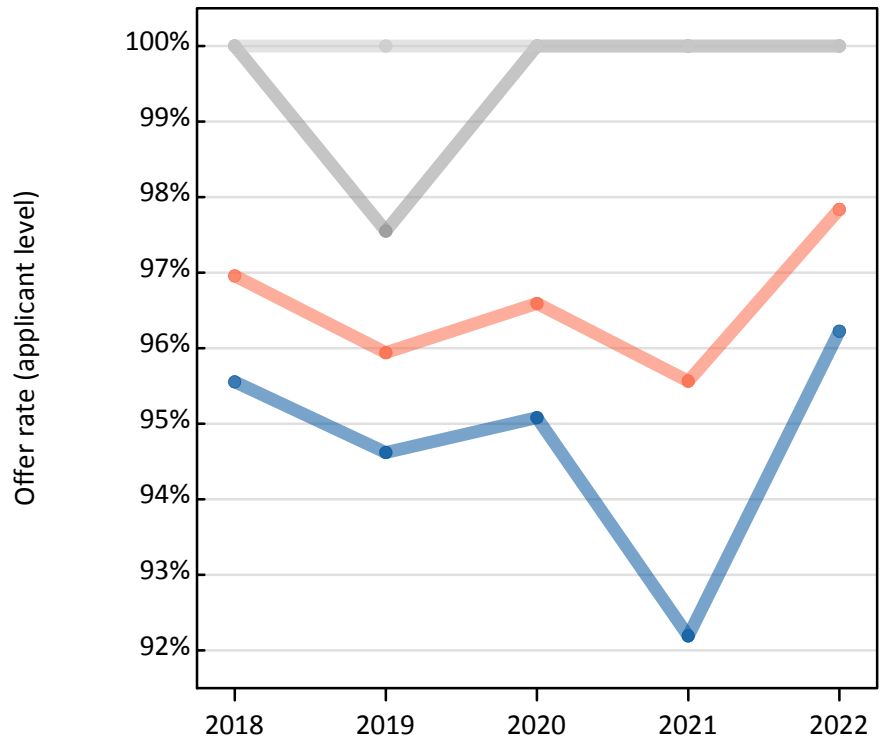
9.6 Proportion of acceptances by qualification

Qualification	2018	2019	2020	2021	2022
No A level, BTEC or SQA	46.6%	51.8%	49.4%	43.4%	37.2%
BTEC	0.0%	0.0%	0.0%	0.0%	0.0%
SQA	0.0%	0.0%	0.0%	0.0%	0.0%
BTEC and SQA	0.0%	0.0%	0.0%	0.0%	0.0%
A level	48.2%	42.8%	46.3%	44.8%	52.4%
A level and BTEC	5.1%	5.4%	4.0%	11.8%	10.0%
A level and SQA	0.0%	0.0%	0.0%	0.0%	0.0%
A level, BTEC and SQA	0.0%	0.0%	0.0%	0.0%	0.0%

9.7 Offer rate (applicant level) by qualification

Offer rate for main scheme applicants by qualification

- No A level, BTEC or SQA
- BTEC
- SQA
- BTEC and SQA
- A level
- A level and BTEC
- A level and SQA
- A level, BTEC and SQA
- All



9.8 Offers (applicant level) by qualification

Number of main scheme applicants with offers by qualification

Qualification	2018	2019	2020	2021	2022
No A level, BTEC or SQA	260	300	290	250	155
BTEC	0	0	0	0	0
SQA	0	0	0	0	0
BTEC and SQA	0	0	0	0	0
A level	225	200	200	185	175
A level and BTEC	25	20	15	40	35
A level and SQA	0	0	0	0	0
A level, BTEC and SQA	0	0	0	0	0
All	510	520	510	475	360

9.9 Offer rate (applicant level) by qualification

Offer rate for main scheme applicants by qualification

Qualification	2018	2019	2020	2021	2022
No A level, BTEC or SQA	95.6%	94.6%	95.1%	92.2%	96.2%
BTEC	0.0%	0.0%	0.0%	0.0%	0.0%
SQA	0.0%	0.0%	0.0%	0.0%	0.0%
BTEC and SQA	0.0%	0.0%	0.0%	0.0%	0.0%
A level	100.0%	97.5%	100.0%	100.0%	100.0%
A level and BTEC	100.0%	100.0%	100.0%	100.0%	100.0%
A level and SQA	0.0%	0.0%	0.0%	0.0%	0.0%
A level, BTEC and SQA	0.0%	0.0%	0.0%	0.0%	0.0%
All	97.0%	95.9%	96.6%	95.6%	97.8%

9.10 Main scheme applicants by qualification

Number of main scheme applicants by qualification

Qualification	2018	2019	2020	2021	2022
No A level, BTEC or SQA	270	315	305	270	160
BTEC	0	0	0	0	0
SQA	0	0	0	0	0
BTEC and SQA	0	0	0	0	0
A level	230	205	205	185	175
A level and BTEC	25	20	15	40	35
A level and SQA	0	0	0	0	0
A level, BTEC and SQA	0	0	0	0	0
All	525	540	530	495	370

10. Acceptances and offers by HE provider

10.1 Acceptances by HE provider

Top 20, 2022 rank

HEP and rank		2018	2019	2020	2021	2022
1	Queen's University Belfast	30	30	45	60	40
	Ulster University	15	30	25	35	40
3	UCL (University College London)	20	25	35	20	15
	University of Manchester	10	10	15	15	15
5	City, University of London	20	20	15	20	10
	King's College London, University of London	10	25	20	20	10
	Queen Mary University of London	0	5	5	10	10
	University of Surrey	10	5	5	5	10
9	The University of Edinburgh	5	10	10	10	5
	Imperial College London	5	15	10	10	5
	University of Leeds	5	10	20	10	5
	University of Bath	0	5	5	5	5
	Durham University	15	10	5	5	5
	Lancaster University	5	5	5	5	5
	University of Nottingham	5	5	0	5	5
	University of Sheffield	10	5	5	5	5
	University of Southampton	0	5	5	5	5
	University of Warwick	15	5	25	5	5
	University of Bristol	5	10	5	0	5
	University of Cambridge	5	5	0	0	5
	Manchester Metropolitan University	5	5	0	0	5

10.2 Total different HE providers applicants accepted to

	2018	2019	2020	2021	2022
Number of HE providers	40	36	38	25	21

10.3 Offers (choice level) by HE provider

Top 20, 2022 rank

HEP and rank		2018	2019	2020	2021	2022
1	Queen's University Belfast	180	175	195	230	210
2	Ulster University	130	160	135	200	200
3	University of Manchester	85	85	75	90	55
4	King's College London, University of London	70	85	100	90	50
5	University of Warwick	70	65	90	70	35
	Queen Mary University of London	15	45	40	65	35
	UCL (University College London)	90	65	105	45	35
8	University of Leeds	45	30	50	45	30
	City, University of London	35	65	35	40	30
	University of Surrey	50	80	45	40	30
	University of Sheffield	45	30	40	35	30
12	Durham University	65	50	40	45	25
	The University of Edinburgh	35	55	40	40	25
	University of Bath	25	30	25	20	25
15	University of Exeter	30	30	30	40	20
	Newcastle University	30	25	20	35	20
	University of Bristol	45	35	40	30	20
	University of Glasgow	40	35	15	20	20
	University of Liverpool	25	15	20	15	20
20	University of Birmingham	25	50	40	30	15
	Coventry University	30	35	25	25	15
	University of Nottingham	40	35	25	25	15
	University of Westminster, London	25	30	20	25	15
	Royal Holloway, University of London	25	30	25	20	15
	University of York	10	15	10	15	15

10.4 Total different HE providers applicants received offers from

	2018	2019	2020	2021	2022
Number of HE providers	86	78	78	72	64

11. Acceptances and offers by JACS3 subject group

11.1 Acceptances by JACS3 subject group

JACS3 subject group	2018	2019	2020	2021	2022
Group A Medicine and Dentistry	10	5	10	5	5
Group B Subjects Allied to Medicine	15	25	20	30	15
Group C Biological Sciences	25	30	25	25	20
Group D Veterinary Sciences, Agriculture and related subjects	5	0	5	0	0
Group F Physical Sciences	20	20	15	10	10
Group G Mathematical Sciences	15	5	20	10	5
Group H Engineering	40	35	50	30	30
Group I Computer Sciences	30	25	35	30	20
Group J Technologies	0	0	0	0	0
Group K Architecture, Building and Planning	15	30	15	15	20
Group L Social studies	25	25	20	25	20
Group M Law	20	15	20	20	15
Group N Business and Administrative studies	65	90	90	75	50
Group P Mass Communication and Documentation	5	0	5	5	0
Group Q Linguistics, Classics and related subjects	0	5	0	0	0
Group R European Languages, Literature and related subjects	0	0	0	0	0
Group T Eastern, Asiatic, African, American and Australasian Languages, Literature and related subjects	0	0	0	0	0
Group V Historical and Philosophical studies	5	5	5	5	5
Group W Creative Arts and Design	20	10	10	10	5
Group X Education	0	0	0	0	0
Y Combined arts	5	0	5	5	0
Y Combined sciences	5	5	5	5	5
Y Combined social sciences	15	5	5	5	5
Y Sciences combined with social sciences or arts	15	5	10	10	5
Y Social sciences combined with arts	5	10	5	5	5
Z General, other combined & unknown	10	10	20	5	5
All	370	365	395	340	250

11.2 Offers (choice level) by JACS3 subject group

JACS3 subject group	2018	2019	2020	2021	2022
Group A Medicine and Dentistry	20	15	25	15	10
Group B Subjects Allied to Medicine	110	160	95	170	95
Group C Biological Sciences	150	160	135	145	105
Group D Veterinary Sciences, Agriculture and related subjects	10	5	10	5	5
Group F Physical Sciences	95	120	80	75	55
Group G Mathematical Sciences	70	35	60	35	35
Group H Engineering	245	195	230	180	170
Group I Computer Sciences	125	140	135	130	100
Group J Technologies	10	10	5	5	0
Group K Architecture, Building and Planning	80	125	70	75	105
Group L Social studies	160	140	150	165	120
Group M Law	100	85	105	105	55
Group N Business and Administrative studies	405	480	425	370	265
Group P Mass Communication and Documentation	35	15	30	20	5
Group Q Linguistics, Classics and related subjects	5	25	10	5	5
Group R European Languages, Literature and related subjects	5	0	5	5	5
Group T Eastern, Asiatic, African, American and Australasian Languages, Literature and related subjects	0	0	0	0	0
Group V Historical and Philosophical studies	40	30	40	30	20
Group W Creative Arts and Design	65	55	50	65	25
Group X Education	5	5	0	0	10
Y Combined arts	20	15	15	10	10
Y Combined sciences	20	25	25	30	30
Y Combined social sciences	65	35	20	30	20
Y Sciences combined with social sciences or arts	55	25	45	30	25
Y Social sciences combined with arts	20	40	40	30	15
Z General, other combined & unknown	50	35	75	35	15
All	1,955	1,975	1,885	1,770	1,305

12. Acceptances and offers by detailed subject group

12.1 Acceptances by detailed subject group

Top 20, 2022 rank

Detailed subject group and rank		2018	2019	2020	2021	2022
1	NN - Combinations within Business & Admin. Studies	25	25	30	25	15
	I1 - Computer Science	25	20	25	20	15
	M1 - Law by Area	15	15	20	20	15
	K2 - Building	10	10	5	15	15
5	L1 - Economics	20	10	10	15	10
	N2 - Management studies	15	25	20	15	10
	H3 - Mechanical Engineering	10	0	15	10	10
	N3 - Finance	10	10	5	10	10
	N1 - Business studies	5	10	10	5	10
	H6 - Electronic and Electrical Engineering	10	10	15	0	10
11	N4 - Accounting	10	10	15	20	5
	C8 - Psychology	10	15	10	15	5
	B9 - Others in Subjects allied to Medicine	5	10	5	10	5
	F1 - Chemistry	5	10	5	10	5
	G1 - Mathematics	10	5	15	10	5
	Z Combs of 3 subjects, or other general courses	10	10	20	5	5
	Y Combs of phys/math science with social studies/bus/law	10	5	5	5	5
	A1 - Pre-clinical Medicine	10	5	10	5	5
	B1 - Anatomy, Physiology and Pathology	5	10	5	5	5
	C9 - Others in Biological Sciences	0	5	5	5	5
	H2 - Civil Engineering	10	10	5	5	5
	H8 - Chemical, Process and Energy Engineering	5	5	5	5	5
	K1 - Architecture	5	15	5	5	5
	L2 - Politics	5	5	5	5	5
	LL - Combinations within Social Studies	0	0	5	5	5

12.2 Total different detailed subject groups applicants accepted to

	2018	2019	2020	2021	2022
Number of detailed subject groups	36	38	40	35	31

12.3 Offers (choice level) by detailed subject group

Top 20, 2022 rank

Detailed subject group and rank		2018	2019	2020	2021	2022
1	N2 - Management studies	120	175	140	125	75
	I1 - Computer Science	100	110	90	95	75
3	L1 - Economics	95	85	90	90	60
	K2 - Building	40	55	35	60	60
5	M1 - Law by Area	90	80	95	100	50
	NN - Combinations within Business & Admin. Studies	95	100	95	75	50
7	C8 - Psychology	45	85	75	65	45
	N4 - Accounting	60	65	70	60	45
	H3 - Mechanical Engineering	50	20	70	40	45
	H2 - Civil Engineering	50	40	40	30	45
11	B9 - Others in Subjects allied to Medicine	50	55	40	90	40
	N1 - Business studies	35	70	55	45	40
	H6 - Electronic and Electrical Engineering	70	60	65	30	40
14	G1 - Mathematics	55	30	50	35	30
	N3 - Finance	50	25	20	30	30
	K1 - Architecture	30	60	25	10	30
17	B2 - Pharmacology, Toxicology and Pharmacy	30	35	25	35	25
	L2 - Politics	35	25	20	25	25
19	F1 - Chemistry	25	35	30	45	20
	C7 - Molecular Biology, Biophysics & Biochemistry	20	15	15	15	20
	C6 - Sport and Exercise Science	15	10	10	10	20

12.4 Total different detailed subject groups applicants received offers for

	2018	2019	2020	2021	2022
Number of detailed subject groups	88	83	84	76	77

13. Acceptances and offers by CAH1 subject group

13.1 Acceptances by CAH1 subject group

CAH1 subject group	2019	2020	2021	2022
(CAH01) medicine and dentistry	5	10	5	5
(CAH02) subjects allied to medicine	35	25	30	15
(CAH03) biological and sport sciences	15	15	10	10
(CAH04) psychology	15	15	15	5
(CAH05) veterinary sciences	0	0	0	0
(CAH06) agriculture, food and related studies	0	0	0	0
(CAH07) physical sciences	20	15	10	5
(CAH08) general and others in sciences	0	0	0	0
(CAH09) mathematical sciences	10	20	10	10
(CAH10) engineering and technology	35	50	30	35
(CAH11) computing	30	40	35	20
(CAH12) geographical and environmental studies	5	5	5	0
(CAH13) architecture, building and planning	30	15	15	20
(CAH14) humanities and liberal arts (non-specific)	0	0	0	0
(CAH15) social sciences	30	40	35	30
(CAH16) law	15	20	20	15
(CAH17) business and management	90	90	80	55
(CAH18) communications and media	0	5	0	5
(CAH19) language and area studies	10	10	5	0
(CAH20) historical, philosophical and religious studies	10	15	10	5
(CAH21) creative arts and design	10	10	15	5
(CAH22) education and teaching	0	0	0	0
(CAH23) combined and general studies	0	0	0	0
All	365	400	330	240

13.2 Offers (choice level) by CAH1 subject group

CAH1 subject group	2019	2020	2021	2022
(CAH01) medicine and dentistry	20	30	15	10
(CAH02) subjects allied to medicine	170	105	185	105
(CAH03) biological and sport sciences	75	60	85	65
(CAH04) psychology	90	85	65	45
(CAH05) veterinary sciences	0	5	5	0
(CAH06) agriculture, food and related studies	0	5	5	5
(CAH07) physical sciences	100	70	65	40
(CAH08) general and others in sciences	5	5	5	0
(CAH09) mathematical sciences	45	85	45	40
(CAH10) engineering and technology	210	240	185	175
(CAH11) computing	155	155	155	115
(CAH12) geographical and environmental studies	35	10	25	15
(CAH13) architecture, building and planning	120	70	75	105
(CAH14) humanities and liberal arts (non-specific)	0	5	0	0
(CAH15) social sciences	180	215	205	150
(CAH16) law	85	105	105	55
(CAH17) business and management	500	440	390	270
(CAH18) communications and media	15	35	20	10
(CAH19) language and area studies	50	35	20	20
(CAH20) historical, philosophical and religious studies	60	75	50	25
(CAH21) creative arts and design	55	45	70	30
(CAH22) education and teaching	5	0	0	10
(CAH23) combined and general studies	0	10	5	0
All	1,975	1,890	1,780	1,290

14. Acceptances and offers by CAH3 subject group

14.1 Acceptances by CAH3 subject group

Top 20, 2022 rank

CAH3 subject group and rank		2019	2020	2021	2022
1	(CAH15-02-01) economics	15	25	25	15
	(CAH11-01-01) computer science	20	25	20	15
	(CAH16-01-01) law	15	20	20	15
	(CAH17-01-07) finance	20	15	20	15
5	(CAH17-01-08) accounting	10	15	20	10
	(CAH13-01-02) building	15	5	15	10
	(CAH17-01-04) management studies	25	25	15	10
	(CAH09-01-01) mathematics	10	20	10	10
	(CAH10-01-02) mechanical engineering	0	15	10	10
	(CAH17-01-01) business and management (non-specific)	25	15	10	10
	(CAH10-01-08) electrical and electronic engineering	5	15	5	10
	(CAH15-03-01) politics	5	10	5	10
	(CAH17-01-02) business studies	10	10	5	10
14	(CAH04-01-01) psychology (non-specific)	15	15	15	5
	(CAH07-02-01) chemistry	10	5	10	5
	(CAH10-01-09) chemical, process and energy engineering	5	5	10	5
	(CAH21-01-03) design studies	5	5	10	5
	(CAH01-01-02) medicine (non-specific)	5	10	5	5
	(CAH02-03-10) biomedical sciences (non-specific)	10	10	5	5
	(CAH02-03-12) others in subjects allied to medicine	5	0	5	5
	(CAH07-01-01) physics	10	10	5	5
	(CAH10-01-07) civil engineering	10	5	5	5
	(CAH11-01-04) software engineering	5	5	5	5
	(CAH13-01-01) architecture	15	5	5	5
	(CAH15-01-02) sociology	0	5	5	5

14.2 Total different CAH3 subjects groups applicants accepted to

	2019	2020	2021	2022
Number of CAH3 subject groups	39	38	34	31

14.3 Offers (choice level) by CAH3 subject group

Top 20, 2022 rank

CAH3 subject group and rank		2019	2020	2021	2022
1	(CAH15-02-01) economics	110	130	125	85
2	(CAH11-01-01) computer science	110	95	95	70
3	(CAH17-01-04) management studies	135	130	95	60
4	(CAH16-01-01) law	85	105	105	55
	(CAH17-01-08) accounting	75	85	80	55
	(CAH17-01-07) finance	70	65	70	55
7	(CAH13-01-02) building	55	35	55	50
8	(CAH04-01-01) psychology (non-specific)	85	80	65	45
	(CAH17-01-01) business and management (non-specific)	105	60	60	45
	(CAH17-01-02) business studies	75	60	55	45
	(CAH10-01-02) mechanical engineering	20	70	35	45
	(CAH10-01-08) electrical and electronic engineering	55	70	35	45
13	(CAH02-03-10) biomedical sciences (non-specific)	55	45	75	35
	(CAH15-03-01) politics	40	50	50	35
	(CAH09-01-01) mathematics	40	70	40	35
	(CAH10-01-07) civil engineering	35	35	30	35
	(CAH13-01-01) architecture	60	30	15	35
18	(CAH10-01-09) chemical, process and energy engineering	30	25	40	25
	(CAH03-02-01) sport and exercise sciences	15	15	25	25
20	(CAH07-02-01) chemistry	40	30	45	20
	(CAH10-01-01) engineering (non-specific)	5	20	20	20
	(CAH11-01-04) software engineering	10	25	20	20
	(CAH03-01-08) molecular biology, biophysics and biochemistry	15	15	15	20
	(CAH13-01-04) planning (urban, rural and regional)	5	10	10	20

14.4 Total different CAH3 subject groups applicants received offers for

	2019	2020	2021	2022
Number of CAH3 subject groups	83	75	73	67

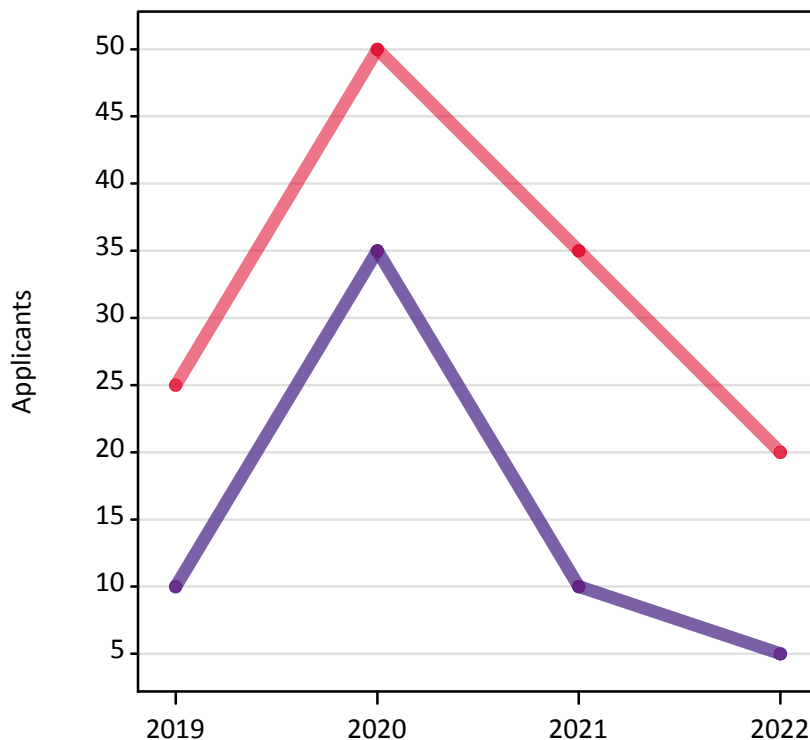
15. Decline my place

Introduced in 2019, Decline my place is a tool which allows 'placed' applicants to release themselves into Clearing. Once Clearing opens, applicants who are holding a firm unconditional place can use the 'Decline my place' button in their application if they no longer want to go to their firm choice. Once an applicant has declined their place, they release themselves into the Clearing process, and are free to be placed through Clearing. To find out more about how Decline my place works, please see the following:

<https://www.ucas.com/undergraduate/results-confirmation-and-clearing/what-clearing/declining-your-firm-place>.

15.1 Decline my place stats

- Applicants who declined place
- Applied after declining place
- Placed after declining place



15.2 Decline my place stats

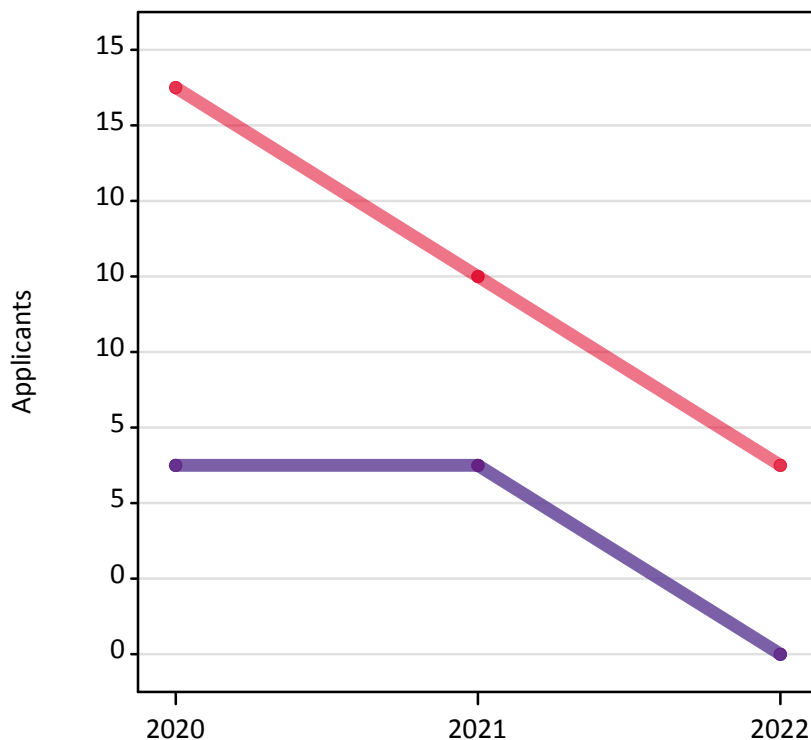
	2019	2020	2021	2022
Applicants who declined their original place	25	50	35	20
Applied after declining their original place	10	35	10	5
Placed after declining their original place	10	35	10	5

16. Clearing Plus

Introduced in 2020, Clearing Plus is a tool which allows 'unplaced' applicants to find tailored course matches in Clearing. It is available once Clearing opens and can be used by those who have been unsuccessful in the main scheme or are applying directly to Clearing. Applicants can register interest in their matched courses which notifies the relevant provider(s) that the applicant would like to be considered for a place. To find out more about how Clearing Plus works, please see the following: <https://www.ucas.com/undergraduate/results-confirmation-and-clearing/what-clearing/what-clearing-plus>.

16.1 Clearing Plus stats

- Registered through Clearing Plus
- Placed at provider of interest
- Placed at course of interest



16.2 Clearing Plus stats

	2020	2021	2022
Applicants registered through Clearing Plus	15	10	5
Placed at a provider in which they registered interest through Clearing Plus	5	5	0
Placed on a course in which they registered interest through Clearing Plus	5	5	0

Technical notes and definitions

Applicant

A person who has made an application in the UCAS system during the cycle reported. This includes those who submit applications for deferred entry.

Acceptance / Placed applicant

An applicant who at the end of the cycle has been placed for entry into higher education.

Acceptance rate

The number of acceptances divided by the number of applicants.

Main scheme

The main UCAS application scheme through which up to five providers/courses can be applied to. This opens in September and closes to new applications on 30 June the following year.

Offers (Choice level)

The number of main scheme applicant choices which have received an offer as captured at 30 June deadline.

Offers (Applicant level)

The number of main scheme applicants holding at least one offer as captured at 30 June deadline.

Offer Rate (Applicant level)

The number of main scheme applicants holding at least one offer divided by the number of main scheme applicants as captured at 30 June deadline.

Offer Rate (Choice level)

The number of main scheme applicant choices which have received an offer divided by the number of main scheme applicant choices as captured at 30 June deadline.

Withdrawn

An applicant who no longer wishes to be considered for a place and completely withdraws their application.

Deferred

An application for deferred entry. Most applications are into the academic year that starts immediately at the end of the application cycle.

Deadline

One of key application deadlines during the UCAS application cycle. May be: 15 October for medicine and dentistry courses or applications to Oxford or Cambridge; the equal consideration deadline (ECD) in January for most undergraduate courses; 30 June for any other main scheme choices. Applicants who apply after 30 June can only enter directly into Clearing.

Direct to Clearing

Applicants who register to apply after 30 June. Applicants cannot make parallel applications through this route - only one application will be active at a given point in time.

Choice

An applicant's application to a course at a provider.

Provider decision

Applications are referred to providers who consider the application and return a decision. The decision can be to make an offer (conditional or unconditional) or to reject the application. Applications that are yet to receive a decision are classified as 'Other'. In this report, if an application is withdrawn, it is classified as 'Reject'.

Reply

When an applicant receives an offer to their application, they may respond by setting the offer as the 'Firm' choice, 'Insurance', or to 'decline' the offer. If an applicant received at least one offer, they may choose at most one to be their Firm, at most one to be their Insurance choice if they have at least two offers, and other offers must be declined.

Provider tariff group

The grouping of providers based on the average levels of attainment of their accepted applicants (summarised through UCAS Tariff points) in a period of application cycles spanning from 2004 to 2011. Each group of providers accounted for around a third of all UK 18 year old acceptances in these cycles, with the following categories: 'Higher tariff', 'Medium tariff' and 'Lower tariff'.

Mission Group

For further information on mission groups, please refer to the following document:
<https://www.ucas.com/file/642566/download?token=WH5IEHa5>

Acceptance route

Firm Choice, Insurance choice, Main Scheme Clearing, Direct Clearing, Adjustment, Extra, Other Main Scheme Choice

Firm Choice

The applicant was accepted to their first choice. In order to be defined as placed at their firm choice, an applicant must have been placed at the provider with which they hold their firm choice at 30 June.

Insurance Choice

The applicant was accepted to their second choice. In order to be defined as placed at their insurance choice, an applicant must have been placed at the provider with which they hold their insurance choice at 30 June.

Other Main Scheme Choice

An applicant who applied by 30 June and was accepted to a main scheme choice but had not responded, or was awaiting an offer, at 30 June.

Main Scheme Clearing

An applicant was unsuccessful in the main scheme (i.e. applied before 30 June) and subsequently found a place using Clearing.

Direct Clearing

An applicant who applied via Clearing without an initial application through the main scheme.

Adjustment

A route where applicants who have met and exceeded the conditions of their firm choice choose to take up an alternative offer

Extra

A route where applicants who held no offers after using all of their main scheme choices, make additional choices.

JACS3 subject group

Classifies course applied to into one of 26 subject groups. For more information about JACS3 subject coding, go to www.hesa.ac.uk/support/documentation/jacs.

Detailed subject group

Classifies course applied to into one of 215 detailed subject groups. For more information about JACS3 subject coding, go to www.hesa.ac.uk/support/documentation/jacs.

CAH1 subject group

Common aggregation hierarchy 1, the classification used to categorise HECoS course subject codes into 23 subject groups. A course may be associated with up to 5 individual subject codes each with a respective percentage weight. Summing these weightings can create fractions of offers and applications which, when rounded, may be different to the totals seen elsewhere in the report. For more information about HECoS and the common aggregation hierarchy, go to www.hesa.ac.uk/innovation/hecos.

CAH3 subject Group

Common aggregation hierarchy 3, the classification used to categorise HECoS course subject codes into 167 subject groups. A course may be associated with up to 5 individual subject codes each with a respective percentage weight. Summing these weightings can create fractions of offers and applications which, when rounded, may be different to the totals seen elsewhere in the report. For more information about HECoS and the common aggregation hierarchy, go to www.hesa.ac.uk/innovation/hecos.

Qualification

Indicates if an applicant has achieved the specified qualification or combination (at least one) as identified either on application or through Awarding Body Linkage process. Please note: This flag is not updated beyond the end of the application cycle for each applicant (i.e. if an applicant applied in the 2017 cycle without achieving an A level, but went on to obtain this qualification in 2018, the value for the applicant applying in 2017 would remain 'A level qualification not identified').

Decline My Place

Introduced in 2019, Decline my place is a tool which allows 'placed' applicants to release themselves into Clearing. Once Clearing opens, applicants who are holding a firm unconditional place can use the 'Decline my place' button in their application if they no longer want to go to their firm choice. Once an applicant has declined their place, they release themselves into the Clearing process, and are free to be placed through Clearing. To find out more about how Decline my place works, please see the following:

<https://www.ucas.com/undergraduate/results-confirmation-and-clearing/what-clearing/declining-your-firm-place>.

Clearing Plus

Introduced in 2020, Clearing Plus is a tool which allows 'unplaced' applicants to find tailored course matches in Clearing. It is available once Clearing opens and can be used by those who have been unsuccessful in the main scheme or are applying directly to Clearing. Applicants can register interest in their matched courses which notifies the relevant provider(s) that the applicant would like to be considered for a place. To find out more about how Clearing Plus works, please see the following: <https://www.ucas.com/undergraduate/results-confirmation-and-clearing/what-clearing/what-clearing-plus>.