

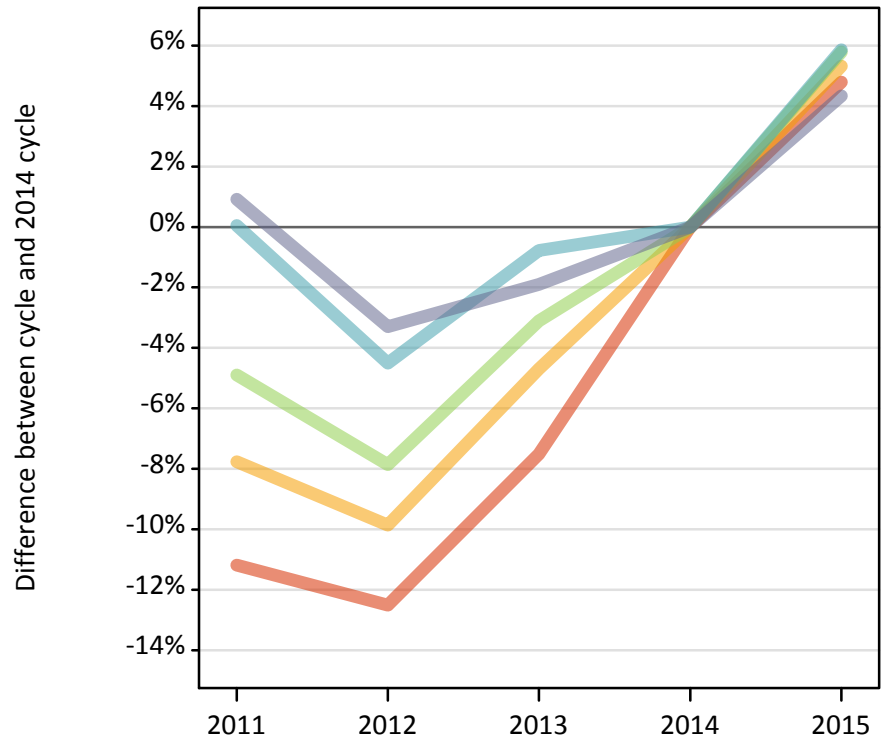
Daily Clearing Analysis: POLAR3

Analysis at 00:05 on Friday 28 August 2015 (15 days after A level results day)

P.1 Placed 18 year old applicants from England by POLAR3 quintile: 15 days after A level results day

Placed 18 year old applicants: change relative to 2014 cycle totals

- Quintile 1
- Quintile 2
- Quintile 3
- Quintile 4
- Quintile 5



P.2 Placed 18 year old applicants from England by POLAR3 quintile: 15 days after A level results day

Applicant Status	POLAR3	2011	2012	2013	2014	2015
Placed	Quintile 1	18,730	18,450	19,500	21,090	22,100
	Quintile 2	27,320	26,700	28,230	29,620	31,200
	Quintile 3	35,690	34,580	36,370	37,530	39,700
	Quintile 4	43,770	41,780	43,410	43,750	46,310
	Quintile 5	58,810	56,360	57,170	58,280	60,810

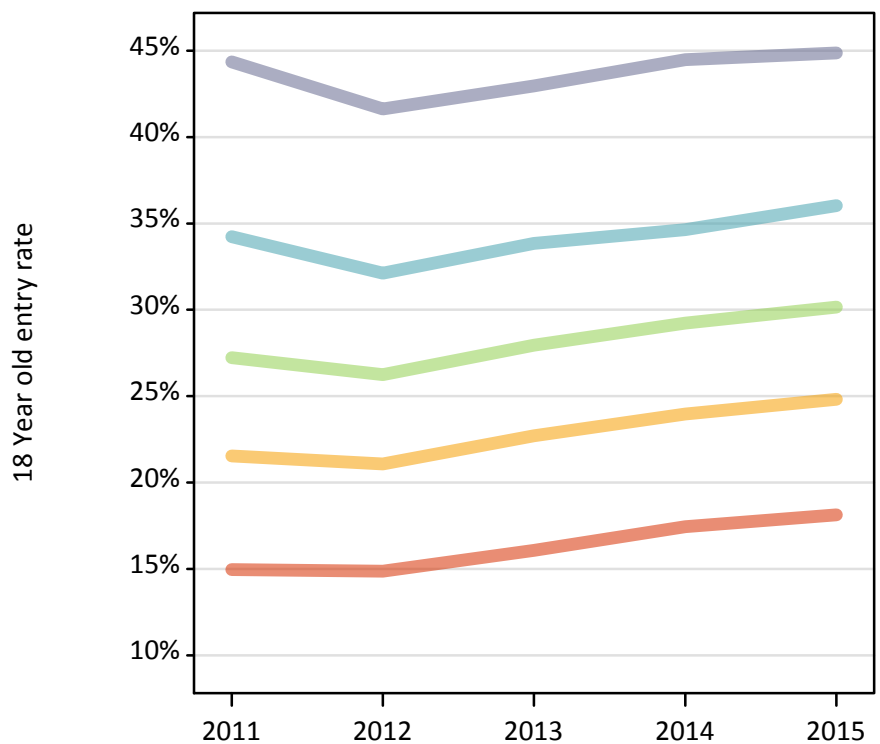
P.3 Placed 18 year old applicants from England by POLAR3 quintile: 15 days after A level results day

Placed 18 year old applicants: change relative to 2014 cycle totals

Applicant Status	POLAR3	2011	2012	2013	2014	2015
Placed	Quintile 1	-11%	-13%	-8%	0%	5%
	Quintile 2	-8%	-10%	-5%	0%	5%
	Quintile 3	-5%	-8%	-3%	0%	6%
	Quintile 4	0%	-5%	-1%	0%	6%
	Quintile 5	1%	-3%	-2%	0%	4%

P.4 Placed 18 year old applicants from England by POLAR3 quintile: 15 days after A level results day

Placed 18 year old applicants: entry rate



P.5 Placed 18 year old applicants from England by POLAR3 quintile: 15 days after A level results day

Placed 18 year old applicants: entry rate

Applicant Status	POLAR3	2011	2012	2013	2014	2015
Placed	Quintile 1	15.0%	14.9%	16.1%	17.4%	18.1%
	Quintile 2	21.5%	21.1%	22.7%	24.0%	24.8%
	Quintile 3	27.2%	26.3%	28.0%	29.2%	30.2%
	Quintile 4	34.2%	32.1%	33.8%	34.6%	36.0%
	Quintile 5	44.4%	41.6%	43.0%	44.5%	44.9%

P.6 Placed 18 year old applicants from England by POLAR3 quintile: 15 days after A level results day

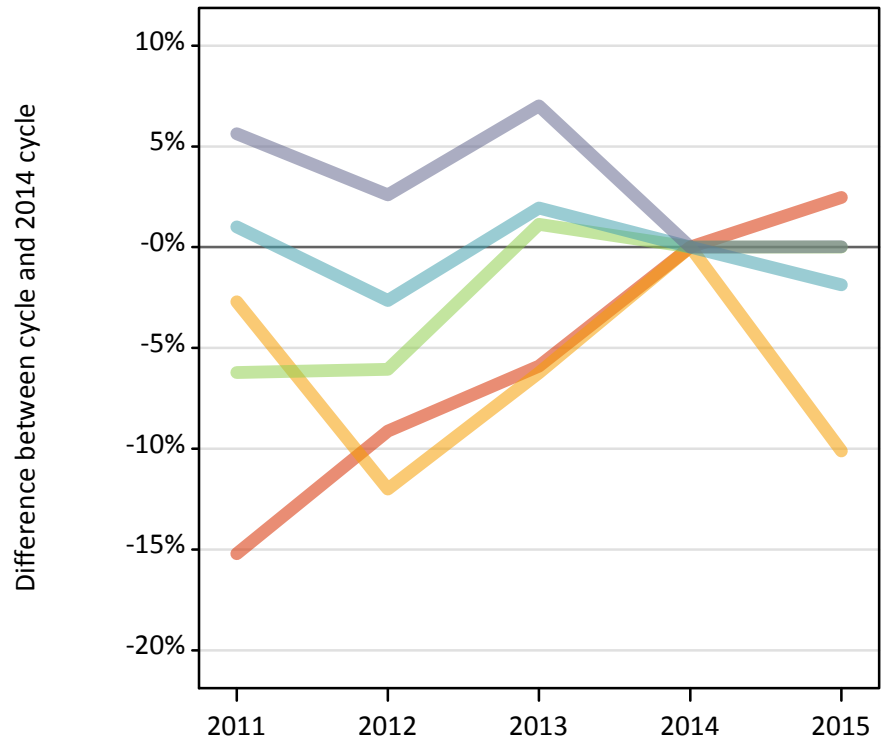
Placed 18 year old applicants: entry rate (indexed to 100 = Quintile 1)

Applicant Status	POLAR3	2011	2012	2013	2014	2015
Placed	Quintile 1	100	100	100	100	100
	Quintile 2	144	142	141	137	137
	Quintile 3	182	177	174	168	166
	Quintile 4	229	216	210	199	199
	Quintile 5	296	280	267	255	248

P.7 Placed 18 year old applicants from Northern Ireland by POLAR3 quintile: 15 days after A level results day

Placed 18 year old applicants: change relative to 2014 cycle totals

- Quintile 1
- Quintile 2
- Quintile 3
- Quintile 4
- Quintile 5



P.8 Placed 18 year old applicants from Northern Ireland by POLAR3 quintile: 15 days after A level results day

Applicant Status	POLAR3	2011	2012	2013	2014	2015
Placed	Quintile 1	450	480	500	530	540
	Quintile 2	830	750	800	850	760
	Quintile 3	1,240	1,240	1,330	1,320	1,320
	Quintile 4	2,600	2,510	2,620	2,570	2,530
	Quintile 5	3,470	3,370	3,510	3,280	3,280

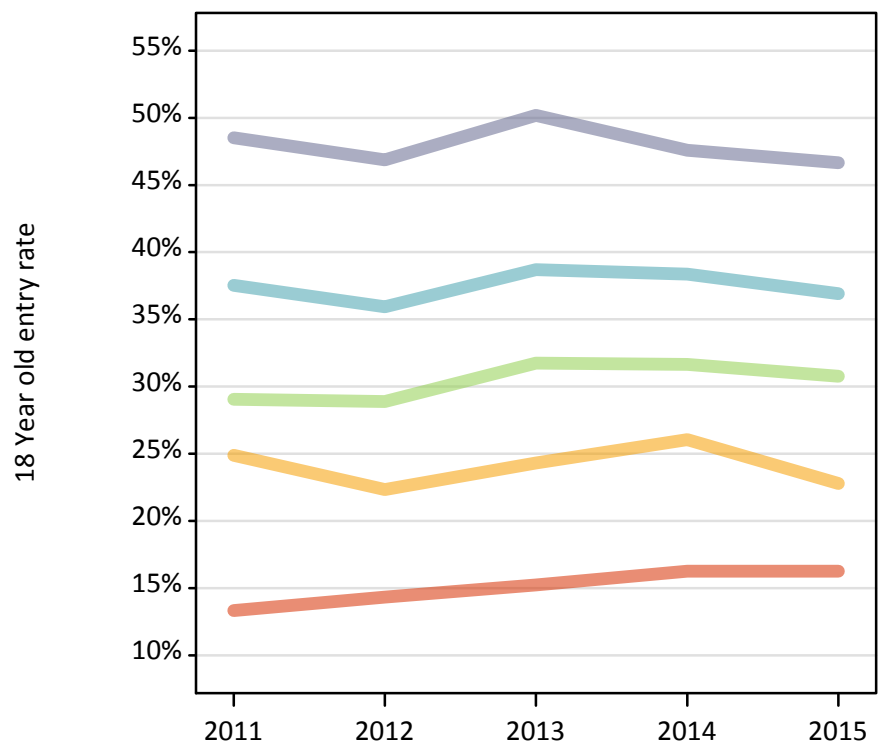
P.9 Placed 18 year old applicants from Northern Ireland by POLAR3 quintile: 15 days after A level results day

Placed 18 year old applicants: change relative to 2014 cycle totals

Applicant Status	POLAR3	2011	2012	2013	2014	2015
Placed	Quintile 1	-15%	-9%	-6%	0%	2%
	Quintile 2	-3%	-12%	-6%	0%	-10%
	Quintile 3	-6%	-6%	1%	0%	0%
	Quintile 4	1%	-3%	2%	0%	-2%
	Quintile 5	6%	3%	7%	0%	0%

P.10 Placed 18 year old applicants from Northern Ireland by POLAR3 quintile: 15 days after A level results day

Placed 18 year old applicants: entry rate



P.11 Placed 18 year old applicants from Northern Ireland by POLAR3 quintile: 15 days after A level results day

Placed 18 year old applicants: entry rate

Applicant Status	POLAR3	2011	2012	2013	2014	2015
Placed	Quintile 1	13.3%	14.3%	15.2%	16.3%	16.3%
	Quintile 2	24.9%	22.3%	24.3%	26.1%	22.8%
	Quintile 3	29.1%	28.9%	31.7%	31.7%	30.8%
	Quintile 4	37.5%	35.9%	38.7%	38.4%	36.9%
	Quintile 5	48.5%	46.9%	50.2%	47.6%	46.7%

P.12 Placed 18 year old applicants from Northern Ireland by POLAR3 quintile: 15 days after A level results day

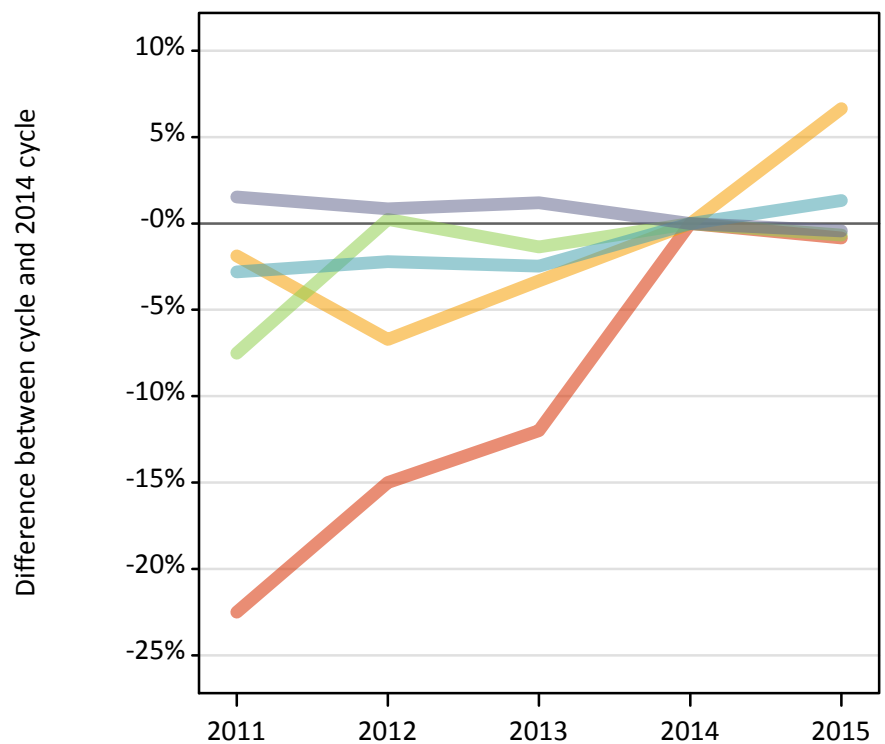
Placed 18 year old applicants: entry rate (indexed to 100 = Quintile 1)

Applicant Status	POLAR3	2011	2012	2013	2014	2015
Placed	Quintile 1	100	100	100	100	100
	Quintile 2	187	156	160	160	140
	Quintile 3	218	202	208	195	189
	Quintile 4	282	251	254	236	227
	Quintile 5	364	327	330	292	287

P.13 Placed 18 year old applicants from Scotland by POLAR3 quintile: 15 days after A level results day

Placed 18 year old applicants: change relative to 2014 cycle totals

- Quintile 1
- Quintile 2
- Quintile 3
- Quintile 4
- Quintile 5



P.14 Placed 18 year old applicants from Scotland by POLAR3 quintile: 15 days after A level results day

Applicant Status	POLAR3	2011	2012	2013	2014	2015
Placed	Quintile 1	470	510	530	600	600
	Quintile 2	1,360	1,290	1,340	1,390	1,480
	Quintile 3	2,030	2,200	2,160	2,190	2,180
	Quintile 4	3,290	3,310	3,300	3,390	3,430
	Quintile 5	6,830	6,780	6,810	6,730	6,700

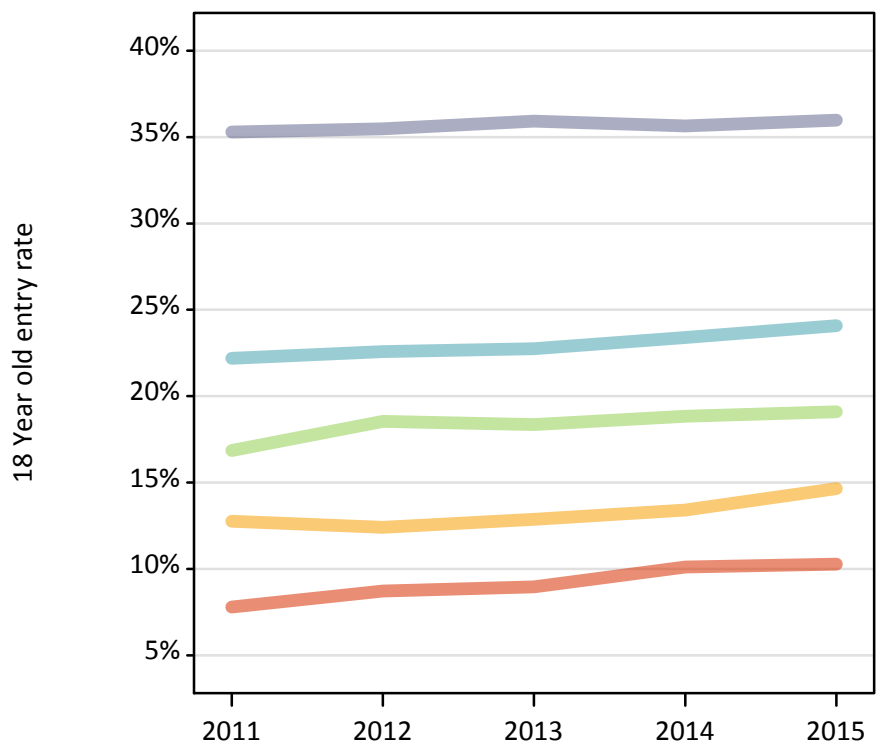
P.15 Placed 18 year old applicants from Scotland by POLAR3 quintile: 15 days after A level results day

Placed 18 year old applicants: change relative to 2014 cycle totals

Applicant Status	POLAR3	2011	2012	2013	2014	2015
Placed	Quintile 1	-23%	-15%	-12%	0%	-1%
	Quintile 2	-2%	-7%	-3%	0%	7%
	Quintile 3	-8%	0%	-1%	0%	-1%
	Quintile 4	-3%	-2%	-2%	0%	1%
	Quintile 5	2%	1%	1%	0%	-0%

P.16 Placed 18 year old applicants from Scotland by POLAR3 quintile: 15 days after A level results day

Placed 18 year old applicants: entry rate



P.17 Placed 18 year old applicants from Scotland by POLAR3 quintile: 15 days after A level results day

Placed 18 year old applicants: entry rate

Applicant Status	POLAR3	2011	2012	2013	2014	2015
Placed	Quintile 1	7.8%	8.7%	9.0%	10.1%	10.3%
	Quintile 2	12.8%	12.4%	12.9%	13.4%	14.6%
	Quintile 3	16.9%	18.5%	18.4%	18.8%	19.1%
	Quintile 4	22.2%	22.6%	22.8%	23.4%	24.1%
	Quintile 5	35.3%	35.5%	35.9%	35.6%	36.0%

P.18 Placed 18 year old applicants from Scotland by POLAR3 quintile: 15 days after A level results day

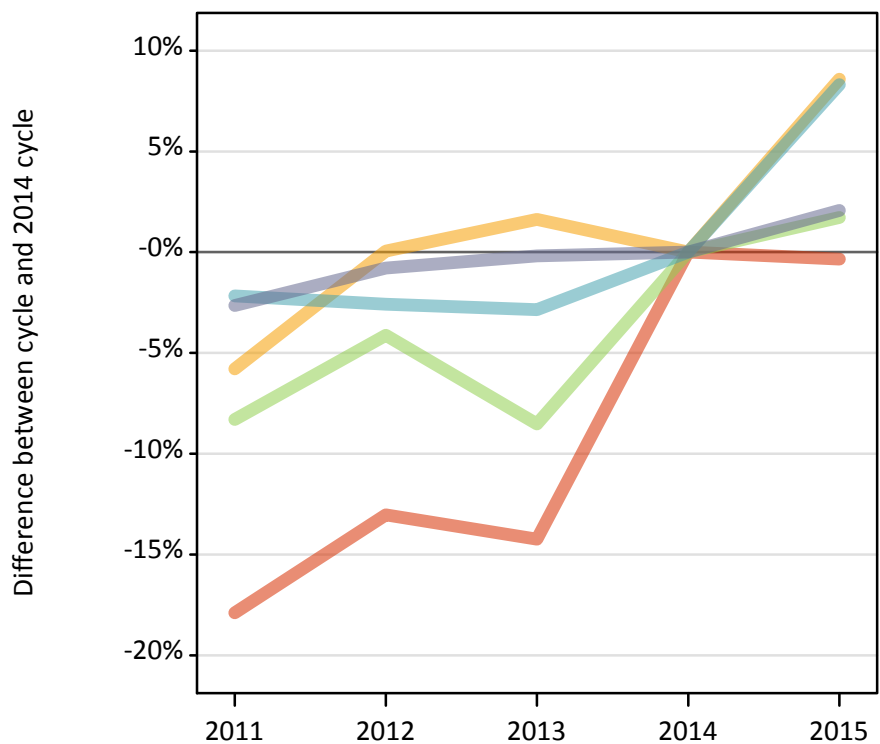
Placed 18 year old applicants: entry rate (indexed to 100 = Quintile 1)

Applicant Status	POLAR3	2011	2012	2013	2014	2015
Placed	Quintile 1	100	100	100	100	100
	Quintile 2	164	142	144	133	142
	Quintile 3	216	213	205	186	186
	Quintile 4	285	259	254	231	234
	Quintile 5	453	407	401	352	350

P.19 Placed 18 year old applicants from Wales by POLAR3 quintile: 15 days after A level results day

Placed 18 year old applicants: change relative to 2014 cycle totals

- Quintile 1
- Quintile 2
- Quintile 3
- Quintile 4
- Quintile 5



P.20 Placed 18 year old applicants from Wales by POLAR3 quintile: 15 days after A level results day

Applicant Status	POLAR3	2011	2012	2013	2014	2015
Placed	Quintile 1	1,220	1,290	1,270	1,480	1,480
	Quintile 2	1,850	1,970	2,000	1,970	2,140
	Quintile 3	1,600	1,680	1,600	1,750	1,780
	Quintile 4	2,170	2,160	2,150	2,210	2,400
	Quintile 5	2,580	2,630	2,640	2,650	2,700

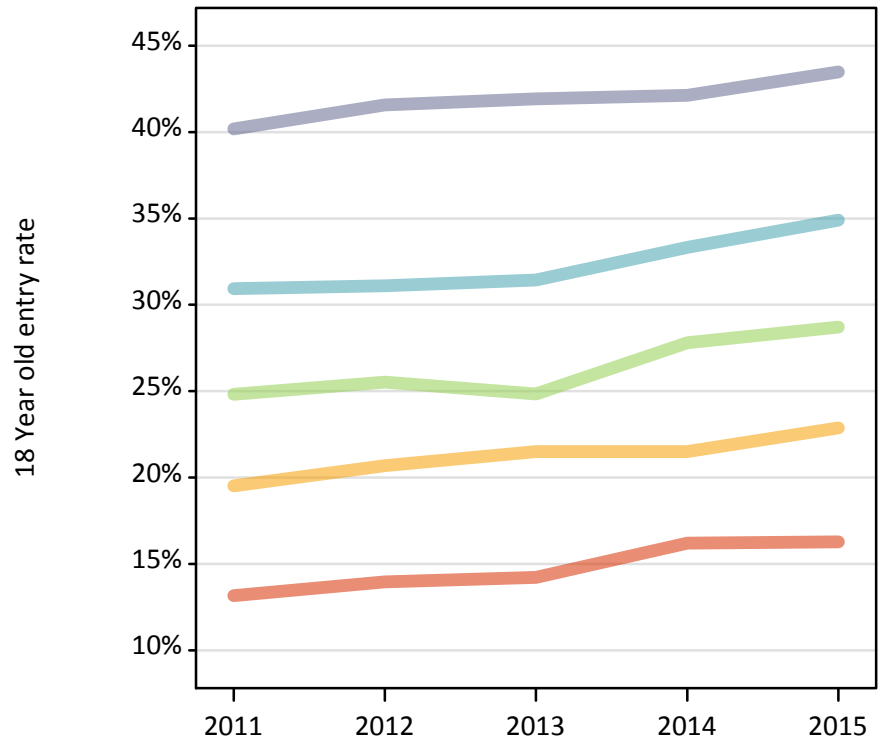
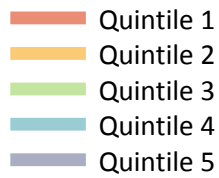
P.21 Placed 18 year old applicants from Wales by POLAR3 quintile: 15 days after A level results day

Placed 18 year old applicants: change relative to 2014 cycle totals

Applicant Status	POLAR3	2011	2012	2013	2014	2015
Placed	Quintile 1	-18%	-13%	-14%	0%	-0%
	Quintile 2	-6%	0%	2%	0%	9%
	Quintile 3	-8%	-4%	-9%	0%	2%
	Quintile 4	-2%	-3%	-3%	0%	8%
	Quintile 5	-3%	-1%	-0%	0%	2%

P.22 Placed 18 year old applicants from Wales by POLAR3 quintile: 15 days after A level results day

Placed 18 year old applicants: entry rate



P.23 Placed 18 year old applicants from Wales by POLAR3 quintile: 15 days after A level results day

Placed 18 year old applicants: entry rate

Applicant Status	POLAR3	2011	2012	2013	2014	2015
Placed	Quintile 1	13.2%	14.0%	14.2%	16.2%	16.3%
	Quintile 2	19.5%	20.7%	21.5%	21.5%	22.9%
	Quintile 3	24.8%	25.5%	24.8%	27.8%	28.7%
	Quintile 4	30.9%	31.1%	31.4%	33.3%	34.9%
	Quintile 5	40.2%	41.6%	41.9%	42.1%	43.5%

P.24 Placed 18 year old applicants from Wales by POLAR3 quintile: 15 days after A level results day

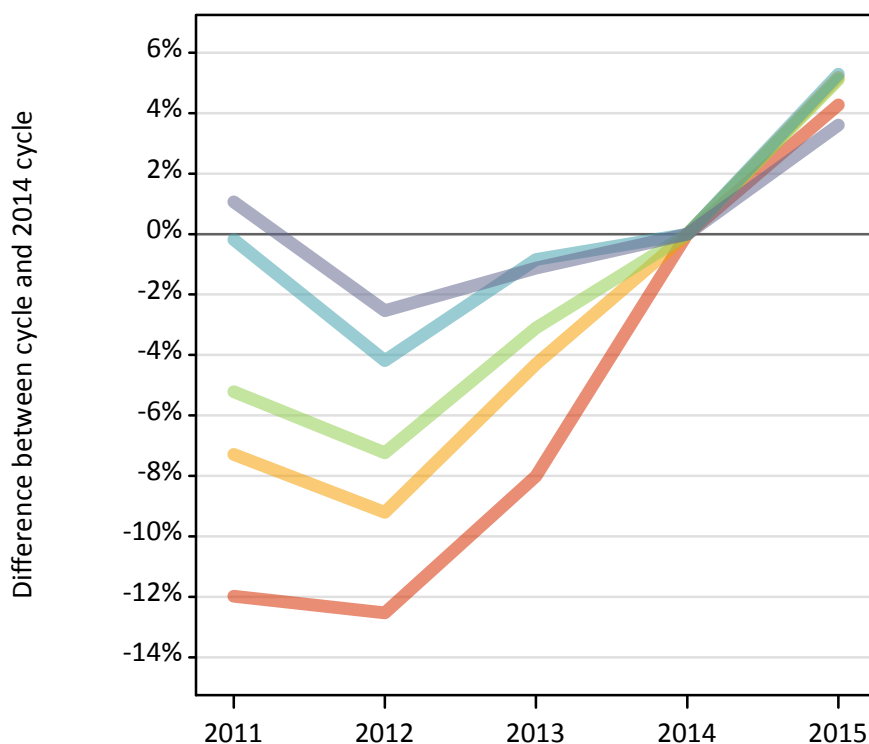
Placed 18 year old applicants: entry rate (indexed to 100 = Quintile 1)

Applicant Status	POLAR3	2011	2012	2013	2014	2015
Placed	Quintile 1	100	100	100	100	100
	Quintile 2	148	148	151	133	140
	Quintile 3	188	183	175	172	176
	Quintile 4	235	223	221	206	214
	Quintile 5	305	298	295	260	267

P.25 Placed 18 year old applicants from the UK by POLAR3 quintile: 15 days after A level results day

Placed 18 year old applicants: change relative to 2014 cycle totals

- Quintile 1
- Quintile 2
- Quintile 3
- Quintile 4
- Quintile 5



P.26 Placed 18 year old applicants from the UK by POLAR3 quintile: 15 days after A level results day

Applicant Status	POLAR3	2011	2012	2013	2014	2015
Placed	Quintile 1	20,850	20,730	21,800	23,690	24,710
	Quintile 2	31,360	30,710	32,370	33,820	35,580
	Quintile 3	40,560	39,690	41,460	42,790	44,980
	Quintile 4	51,830	49,750	51,490	51,920	54,670
	Quintile 5	71,690	69,140	70,130	70,940	73,490

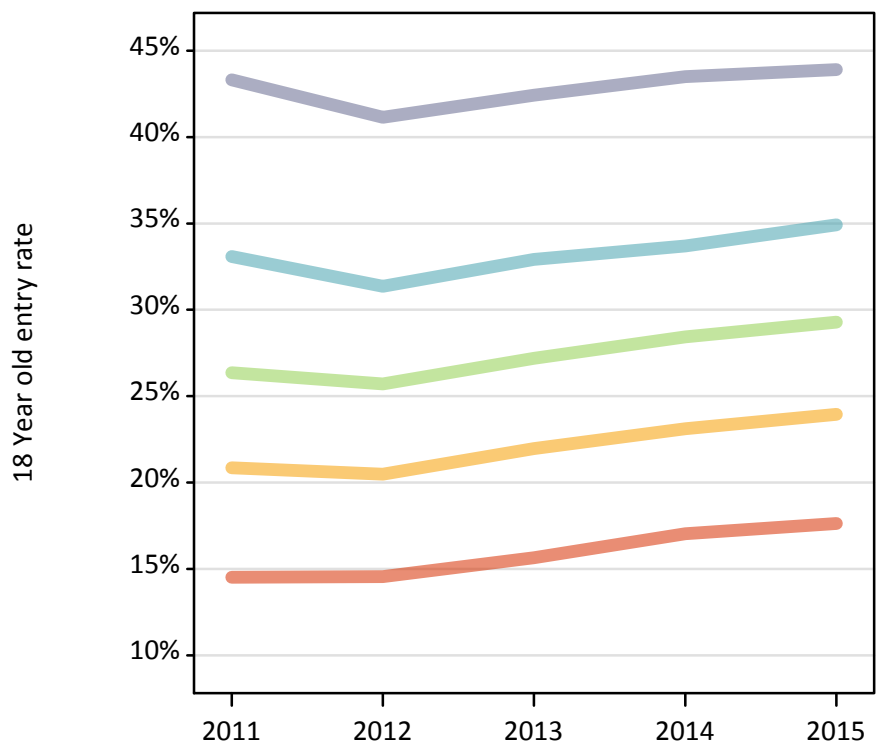
P.27 Placed 18 year old applicants from the UK by POLAR3 quintile: 15 days after A level results day

Placed 18 year old applicants: change relative to 2014 cycle totals

Applicant Status	POLAR3	2011	2012	2013	2014	2015
Placed	Quintile 1	-12%	-13%	-8%	0%	4%
	Quintile 2	-7%	-9%	-4%	0%	5%
	Quintile 3	-5%	-7%	-3%	0%	5%
	Quintile 4	-0%	-4%	-1%	0%	5%
	Quintile 5	1%	-3%	-1%	0%	4%

P.28 Placed 18 year old applicants from the UK by POLAR3 quintile: 15 days after A level results day

Placed 18 year old applicants: entry rate



P.29 Placed 18 year old applicants from the UK by POLAR3 quintile: 15 days after A level results day

Placed 18 year old applicants: entry rate

Applicant Status	POLAR3	2011	2012	2013	2014	2015
Placed	Quintile 1	14.5%	14.5%	15.6%	17.0%	17.6%
	Quintile 2	20.9%	20.5%	22.0%	23.1%	24.0%
	Quintile 3	26.4%	25.7%	27.2%	28.4%	29.3%
	Quintile 4	33.1%	31.4%	32.9%	33.7%	34.9%
	Quintile 5	43.3%	41.2%	42.4%	43.5%	43.9%

P.30 Placed 18 year old applicants from the UK by POLAR3 quintile: 15 days after A level results day

Placed 18 year old applicants: entry rate (indexed to 100 = Quintile 1)

Applicant Status	POLAR3	2011	2012	2013	2014	2015
Placed	Quintile 1	100	100	100	100	100
	Quintile 2	144	141	140	136	136
	Quintile 3	182	177	174	167	166
	Quintile 4	228	216	210	198	198
	Quintile 5	299	283	271	255	249