

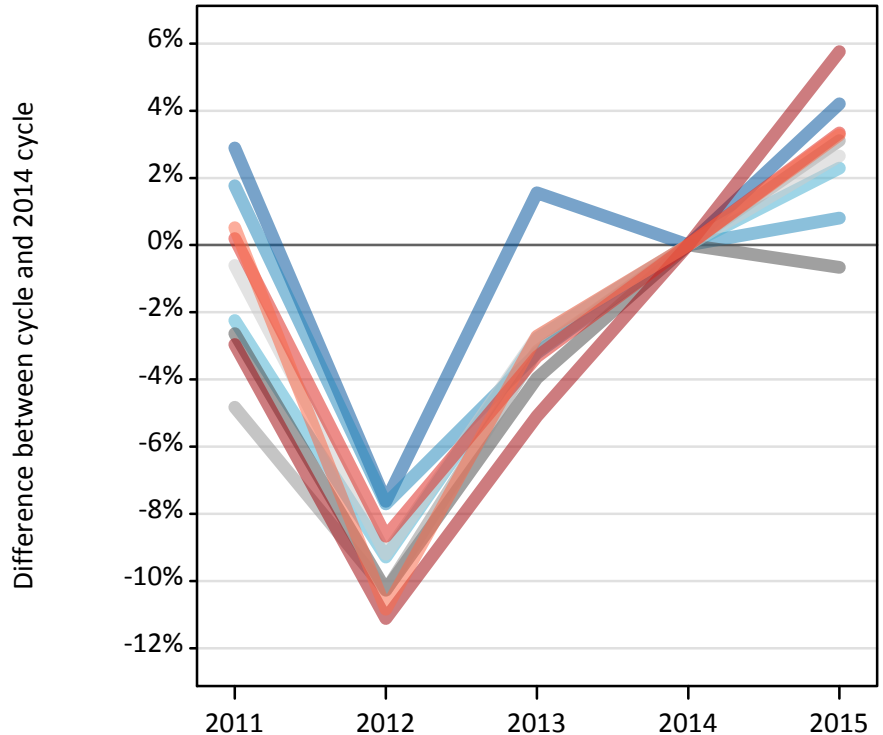
Daily Clearing Analysis: Region

Analysis at 00:05 on Friday 28 August 2015 (15 days after A level results day - No Scot.X1)

RX.1 Placed applicants by region of domicile: 15 days after A level results day

Placed applicants: change relative to 2014 cycle totals

- North East
- North West
- Yorkshire and The Humber
- East Midlands
- West Midlands
- East of England
- London
- South East
- South West



RX.2 Placed applicants by region of domicile: 15 days after A level results day

Applicant Status	Domicile	2011	2012	2013	2014	2015
Placed	North East	15,760	14,150	15,560	15,320	15,960
	North West	49,140	44,560	46,730	48,280	48,670
	Yorkshire and The Humber	32,270	29,940	32,090	33,010	33,770
	East Midlands	27,150	25,020	26,780	27,890	27,700
	West Midlands	36,200	34,130	36,830	38,030	39,220
	East of England	36,590	33,420	35,810	36,810	37,790
	London	64,660	59,230	63,240	66,640	70,480
	South East	57,200	52,140	55,200	57,090	59,000
	South West	32,810	29,110	31,760	32,640	33,720
	(England total)	351,780	321,700	344,000	355,710	366,290
	Scotland	27,500	27,660	28,090	28,890	29,610
	Northern Ireland	13,590	12,960	14,250	14,260	13,880
	Wales	17,280	17,840	18,040	18,820	19,210
	UK	410,140	380,170	404,380	417,680	428,990

RX.3 Placed applicants by region of domicile: 15 days after A level results day

Placed applicants: change relative to 2014 cycle totals

Applicant Status	Domicile	2011	2012	2013	2014	2015
Placed	North East	3%	-8%	2%	0%	4%
	North West	2%	-8%	-3%	0%	1%
	Yorkshire and The Humber	-2%	-9%	-3%	0%	2%
	East Midlands	-3%	-10%	-4%	0%	-1%
	West Midlands	-5%	-10%	-3%	0%	3%
	East of England	-1%	-9%	-3%	0%	3%
	London	-3%	-11%	-5%	0%	6%
	South East	0%	-9%	-3%	0%	3%
	South West	1%	-11%	-3%	0%	3%
	(England total)	-1%	-10%	-3%	0%	3%
	Scotland	-5%	-4%	-3%	0%	2%
	Northern Ireland	-5%	-9%	-0%	0%	-3%
	Wales	-8%	-5%	-4%	0%	2%
	UK	-2%	-9%	-3%	0%	3%

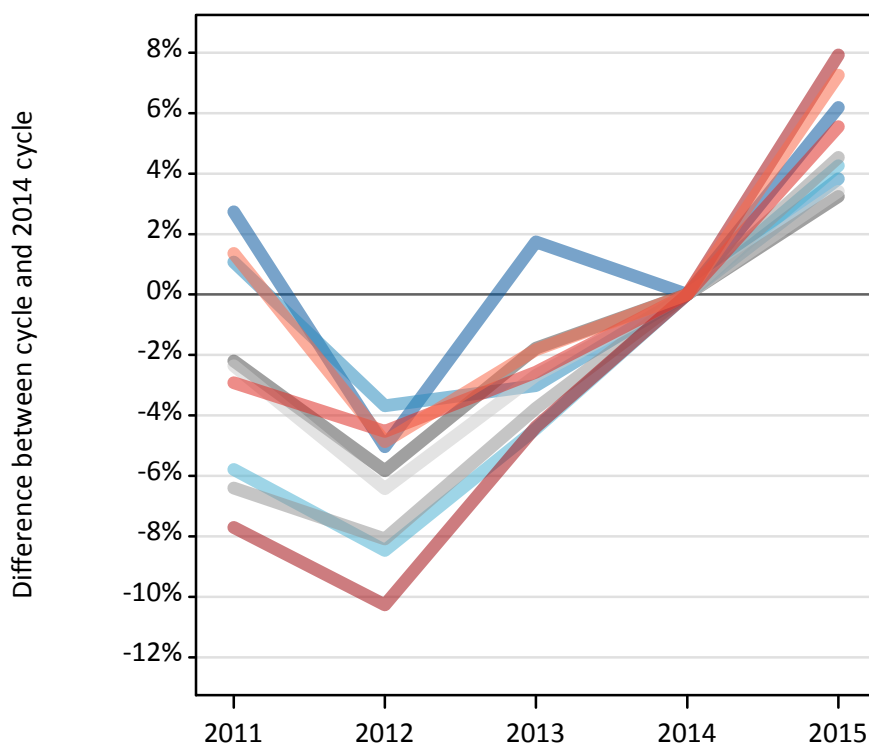
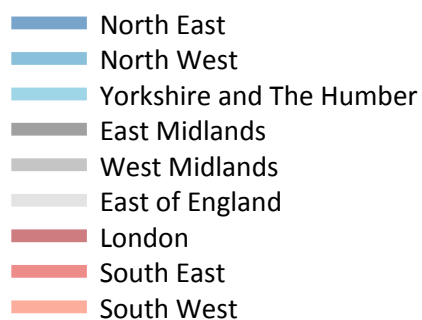
RX.4 Placed applicants by region of domicile: 15 days after A level results day

Placed applicants: absolute change relative to 2014 cycle totals

Applicant Status	Domicile	2011	2012	2013	2014	2015
Placed	North East	440	-1,170	240	0	650
	North West	850	-3,720	-1,550	0	390
	Yorkshire and The Humber	-740	-3,070	-920	0	760
	East Midlands	-730	-2,860	-1,100	0	-190
	West Midlands	-1,840	-3,910	-1,200	0	1,180
	East of England	-220	-3,390	-1,000	0	980
	London	-1,980	-7,410	-3,400	0	3,840
	South East	110	-4,950	-1,900	0	1,910
	South West	170	-3,540	-890	0	1,070
	(England total)	-3,930	-34,010	-11,710	0	10,580
	Scotland	-1,390	-1,230	-800	0	720
	Northern Ireland	-670	-1,300	-10	0	-380
	Wales	-1,540	-980	-780	0	390
	UK	-7,540	-37,510	-13,300	0	11,310

RX.5 Placed 18 year old applicants by region of domicile: 15 days after A level results day

Placed 18 year old applicants: change relative to 2014 cycle totals



RX.6 Placed 18 year old applicants by region of domicile: 15 days after A level results day

Applicant Status	Domicile	2011	2012	2013	2014	2015
Placed	North East	8,200	7,580	8,120	7,980	8,470
	North West	26,550	25,300	25,480	26,270	27,270
	Yorkshire and The Humber	17,070	16,580	17,310	18,110	18,890
	East Midlands	14,770	14,220	14,840	15,100	15,590
	West Midlands	19,020	18,680	19,560	20,320	21,250
	East of England	21,010	20,130	20,940	21,510	22,250
	London	30,340	29,490	31,430	32,870	35,470
	South East	31,210	30,690	31,320	32,150	33,930
	South West	16,500	15,480	15,980	16,270	17,460
	(England total)	184,660	178,160	184,960	190,590	200,580
	Scotland	13,600	13,720	13,760	13,960	14,040
	Northern Ireland	8,570	8,340	8,770	8,560	8,430
	Wales	9,430	9,730	9,680	10,070	10,510
	UK	216,260	209,950	217,160	223,170	233,560

RX.7 Placed 18 year old applicants by region of domicile: 15 days after A level results day

Placed 18 year old applicants: change relative to 2014 cycle totals

Applicant Status	Domicile	2011	2012	2013	2014	2015
Placed	North East	3%	-5%	2%	0%	6%
	North West	1%	-4%	-3%	0%	4%
	Yorkshire and The Humber	-6%	-8%	-4%	0%	4%
	East Midlands	-2%	-6%	-2%	0%	3%
	West Midlands	-6%	-8%	-4%	0%	5%
	East of England	-2%	-6%	-3%	0%	3%
	London	-8%	-10%	-4%	0%	8%
	South East	-3%	-5%	-3%	0%	6%
	South West	1%	-5%	-2%	0%	7%
	(England total)	-3%	-7%	-3%	0%	5%
	Scotland	-3%	-2%	-1%	0%	1%
	Northern Ireland	0%	-3%	2%	0%	-1%
	Wales	-6%	-3%	-4%	0%	4%
	UK	-3%	-6%	-3%	0%	5%

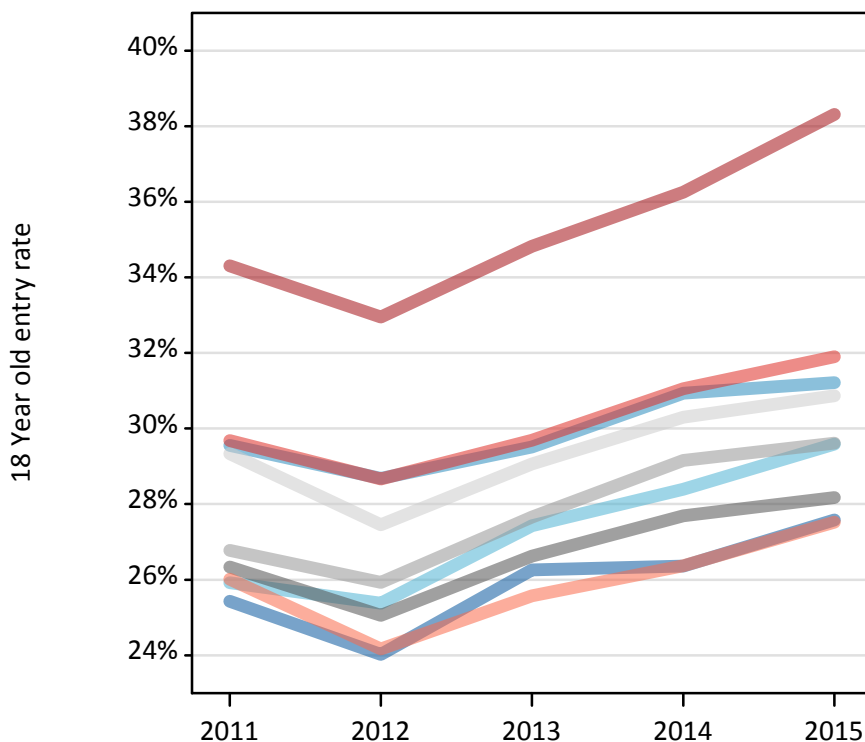
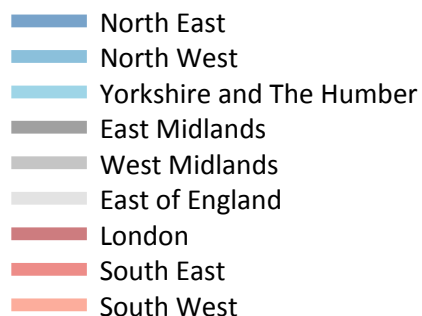
RX.8 Placed 18 year old applicants by region of domicile: 15 days after A level results day

Placed 18 year old applicants: absolute change relative to 2014 cycle totals

Applicant Status	Domicile	2011	2012	2013	2014	2015
Placed	North East	220	-400	140	0	490
	North West	280	-970	-790	0	1,000
	Yorkshire and The Humber	-1,050	-1,530	-810	0	770
	East Midlands	-330	-880	-270	0	490
	West Midlands	-1,300	-1,640	-770	0	920
	East of England	-510	-1,380	-580	0	730
	London	-2,530	-3,380	-1,440	0	2,610
	South East	-940	-1,460	-830	0	1,790
	South West	220	-790	-300	0	1,180
	(England total)	-5,940	-12,430	-5,630	0	9,990
	Scotland	-360	-230	-200	0	80
	Northern Ireland	20	-220	210	0	-120
	Wales	-640	-340	-390	0	440
	UK	-6,920	-13,220	-6,010	0	10,390

RX.9 Placed 18 year old applicants by region of domicile: 15 days after A level results day

Placed 18 year old applicants: entry rate



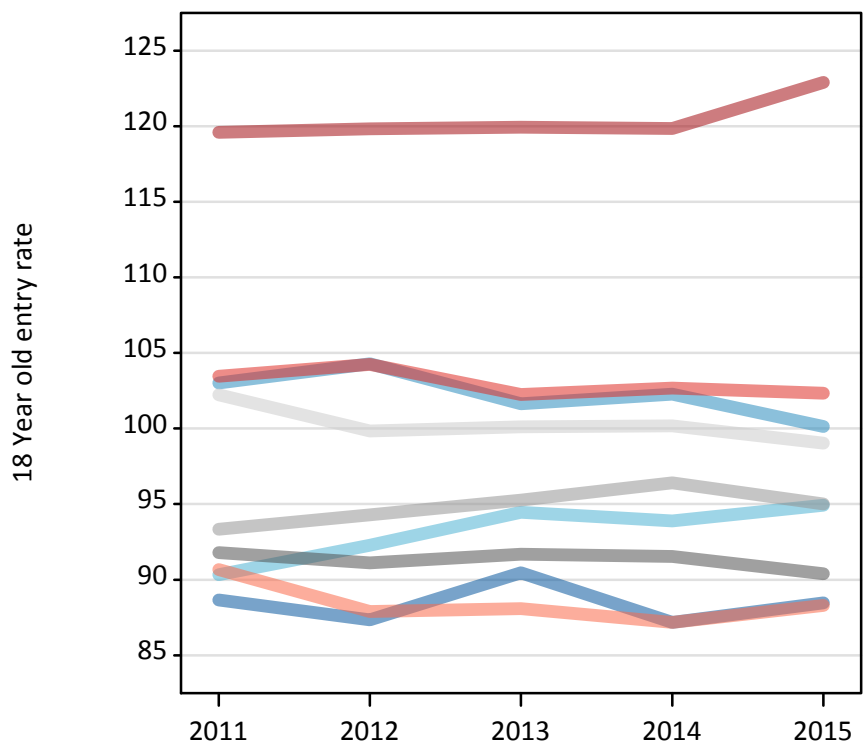
RX.10 Placed 18 year old applicants by region of domicile: 15 days after A level results day

Placed 18 year old applicants: entry rate

Applicant Status	Domicile	2011	2012	2013	2014	2015
Placed	North East	25.4%	24.0%	26.3%	26.4%	27.6%
	North West	29.6%	28.7%	29.5%	30.9%	31.2%
	Yorkshire and The Humber	25.9%	25.4%	27.4%	28.4%	29.6%
	East Midlands	26.3%	25.1%	26.6%	27.7%	28.2%
	West Midlands	26.8%	25.9%	27.7%	29.2%	29.6%
	East of England	29.3%	27.5%	29.1%	30.3%	30.9%
	London	34.3%	33.0%	34.8%	36.3%	38.3%
	South East	29.7%	28.7%	29.7%	31.1%	31.9%
	South West	26.0%	24.2%	25.6%	26.4%	27.5%
	(England total)	28.7%	27.5%	29.0%	30.2%	31.2%
	Scotland	21.6%	22.2%	22.3%	22.8%	23.3%
	Northern Ireland	34.3%	33.2%	35.8%	35.3%	34.0%
	Wales	24.4%	25.2%	25.6%	26.9%	27.9%
	UK	28.1%	27.1%	28.5%	29.6%	30.5%

RX.11 Placed 18 year old applicants by region of domicile: 15 days after A level results day

Placed 18 year old applicants: entry rates (indexed to 100 = England)



RX.12 Placed 18 year old applicants by region of domicile: 15 days after A level results day

Placed 18 year old applicants: entry rate (indexed to 100 = England)

Applicant Status	Domicile	2011	2012	2013	2014	2015
Placed	North East	89	87	90	87	88
	North West	103	104	102	102	100
	Yorkshire and The Humber	90	92	94	94	95
	East Midlands	92	91	92	92	90
	West Midlands	93	94	95	96	95
	East of England	102	100	100	100	99
	London	120	120	120	120	123
	South East	103	104	102	103	102
	South West	91	88	88	87	88
	(England total)	100	100	100	100	100