

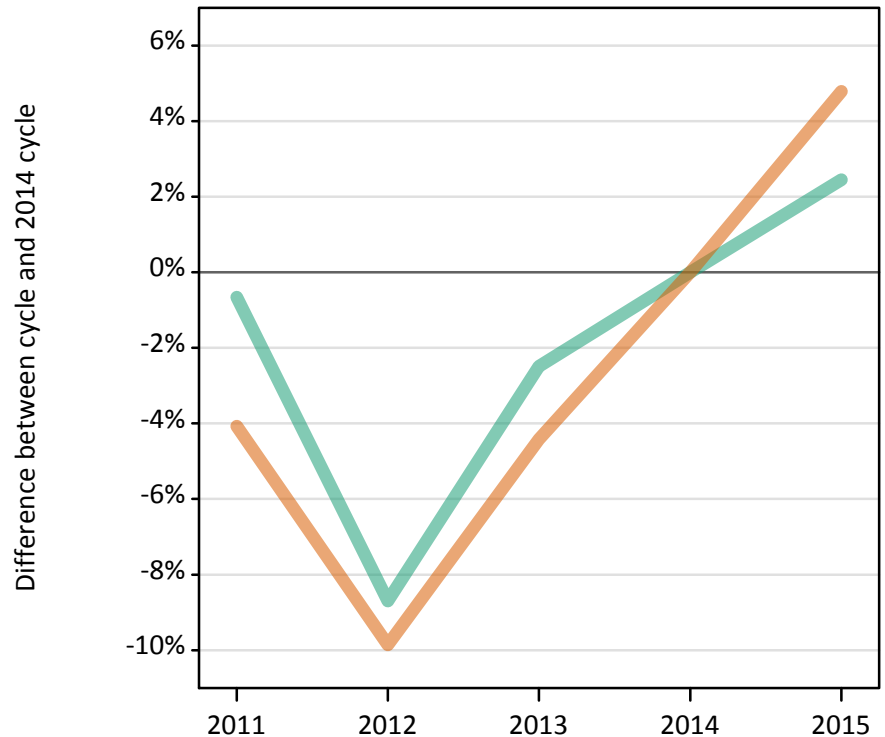
Daily Clearing Analysis: Sex

Analysis at 00:05 on Thursday 27 August 2015 (14 days after A level results day)

S.1 Placed applicants from all domiciles by sex: 14 days after A level results day

Placed applicants: change relative to 2014 cycle totals

Men
Women



S.2 Placed applicants from all domiciles by sex: 14 days after A level results day

Applicant Status	Sex	2011	2012	2013	2014	2015
Placed	Men	207,950	191,110	204,100	209,320	214,450
	Women	254,140	238,830	253,230	264,940	277,620
	All	462,090	429,940	457,330	474,260	492,080

S.3 Placed applicants from all domiciles by sex: 14 days after A level results day

Placed applicants: change relative to 2014 cycle totals

Applicant Status	Sex	2011	2012	2013	2014	2015
Placed	Men	-1%	-9%	-2%	0%	2%
	Women	-4%	-10%	-4%	0%	5%
	All	-3%	-9%	-4%	0%	4%

S.4 Placed applicants from all domiciles by sex: 14 days after A level results day

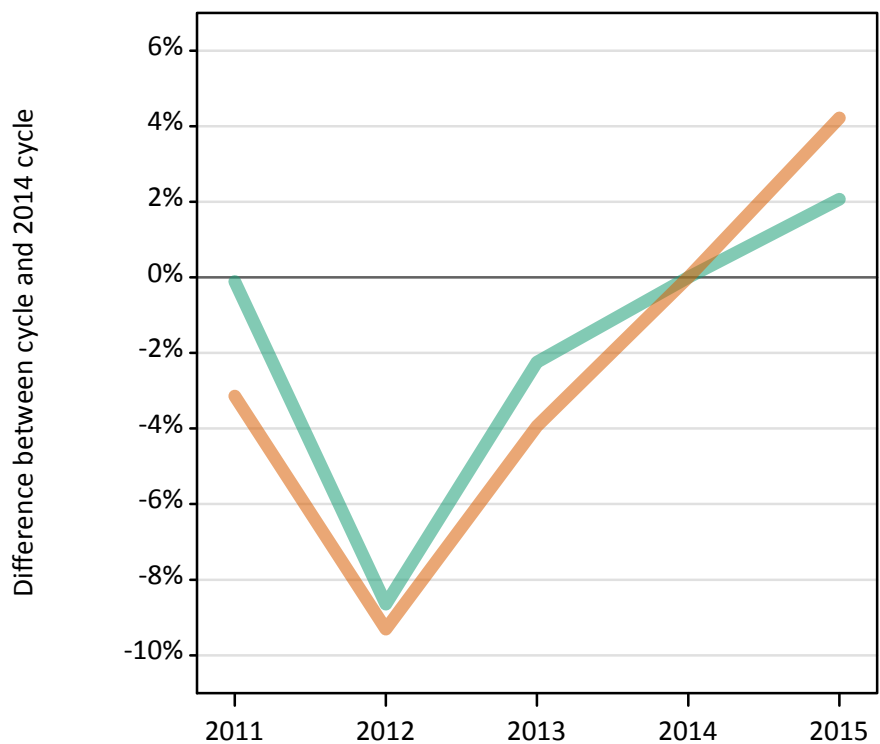
Placed applicants: absolute change relative to 2014 cycle totals

Applicant Status	Sex	2011	2012	2013	2014	2015
Placed	Men	-1,370	-18,200	-5,220	0	5,140
	Women	-10,800	-26,120	-11,720	0	12,680
	All	-12,170	-44,320	-16,930	0	17,820

S.5 Placed applicants from the UK by sex: 14 days after A level results day

Placed applicants: change relative to 2014 cycle totals

Men
Women



S.6 Placed applicants from the UK by sex: 14 days after A level results day

Applicant Status	Sex	2011	2012	2013	2014	2015
Placed	Men	182,970	167,320	179,050	183,160	186,950
	Women	225,840	211,460	223,990	233,170	243,020
	All	408,810	378,780	403,040	416,330	429,970

S.7 Placed applicants from the UK by sex: 14 days after A level results day

Placed applicants: change relative to 2014 cycle totals

Applicant Status	Sex	2011	2012	2013	2014	2015
Placed	Men	-0%	-9%	-2%	0%	2%
	Women	-3%	-9%	-4%	0%	4%
	All	-2%	-9%	-3%	0%	3%

S.8 Placed applicants from the UK by sex: 14 days after A level results day

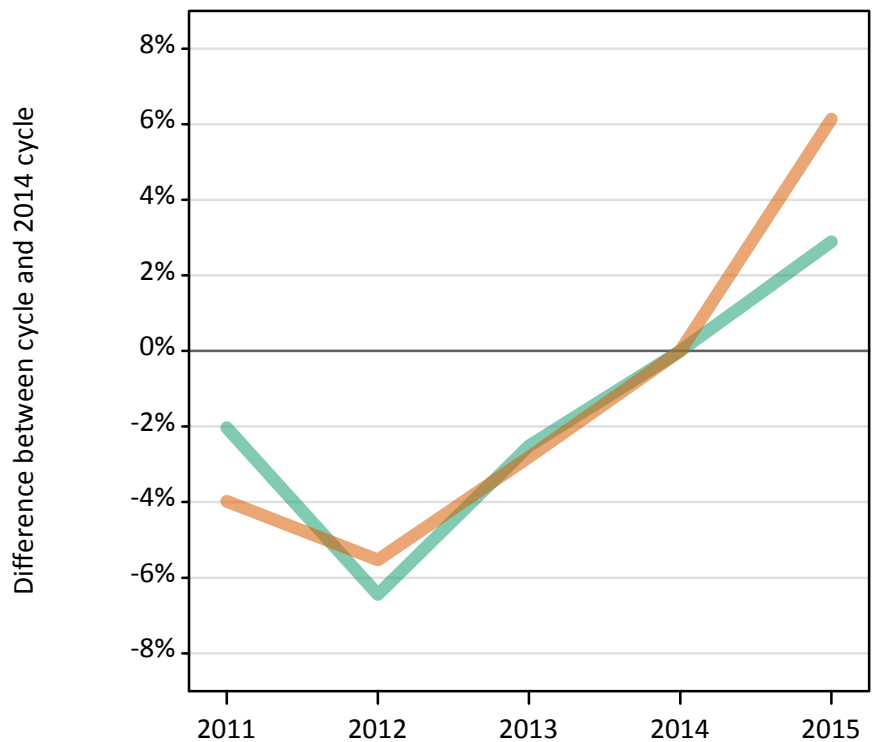
Placed applicants: absolute change relative to 2014 cycle totals

Applicant Status	Sex	2011	2012	2013	2014	2015
Placed	Men	-190	-15,840	-4,110	0	3,790
	Women	-7,330	-21,710	-9,180	0	9,850
	All	-7,520	-37,560	-13,290	0	13,640

S.9 Placed 18 year old applicants from the UK by sex: 14 days after A level results day

Placed 18 year old applicants: change relative to 2014 cycle totals

Men
Women



S.10 Placed 18 year old applicants from the UK by sex: 14 days after A level results day

Applicant Status	Sex	2011	2012	2013	2014	2015
Placed	Men	97,170	92,800	96,690	99,190	102,050
	Women	119,070	117,150	120,520	124,010	131,610
	All	216,240	209,950	217,210	223,190	233,660

S.11 Placed 18 year old applicants from the UK by sex: 14 days after A level results day

Placed 18 year old applicants: change relative to 2014 cycle totals

Applicant Status	Sex	2011	2012	2013	2014	2015
Placed	Men	-2%	-6%	-3%	0%	3%
	Women	-4%	-6%	-3%	0%	6%
	All	-3%	-6%	-3%	0%	5%

S.12 Placed 18 year old applicants from the UK by sex: 14 days after A level results day

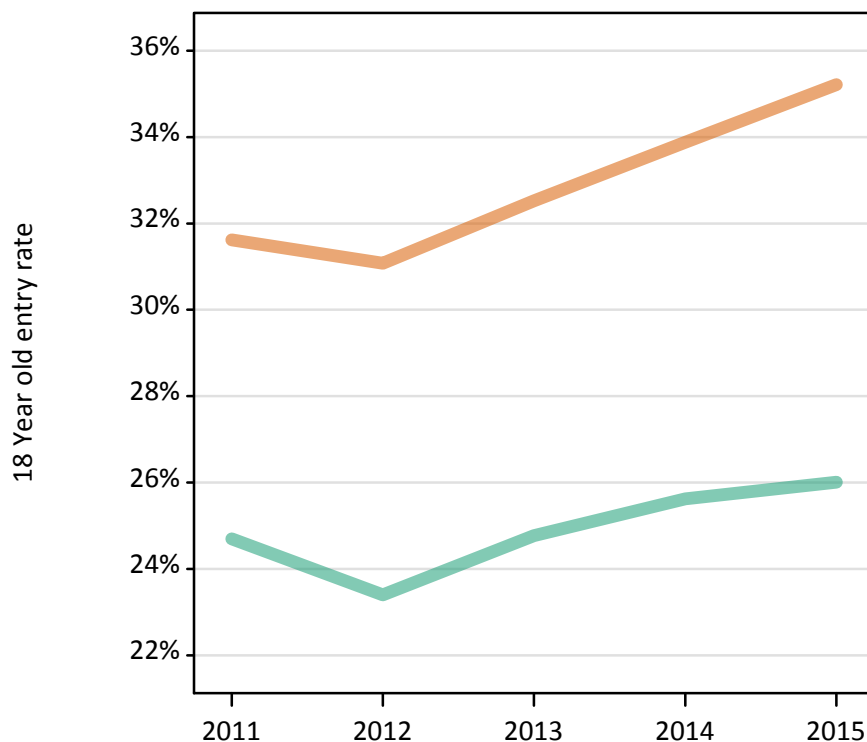
Placed 18 year old applicants: absolute change relative to 2014 cycle totals

Applicant Status	Sex	2011	2012	2013	2014	2015
Placed	Men	-2,020	-6,390	-2,490	0	2,870
	Women	-4,930	-6,860	-3,490	0	7,610
	All	-6,950	-13,250	-5,980	0	10,470

S.13 Placed 18 year old applicants from the UK by sex: 14 days after A level results day

Placed 18 year old applicants: entry rate

Men
Women



S.14 Placed 18 year old applicants from the UK by sex: 14 days after A level results day

Placed 18 year old applicants: entry rate

Applicant Status	Sex	2011	2012	2013	2014	2015
Placed	Men	24.7%	23.4%	24.8%	25.6%	26.0%
	Women	31.6%	31.1%	32.5%	33.9%	35.2%
	All	28.1%	27.1%	28.5%	29.6%	30.5%

S.15 Placed 18 year old applicants from the UK by sex: 14 days after A level results day

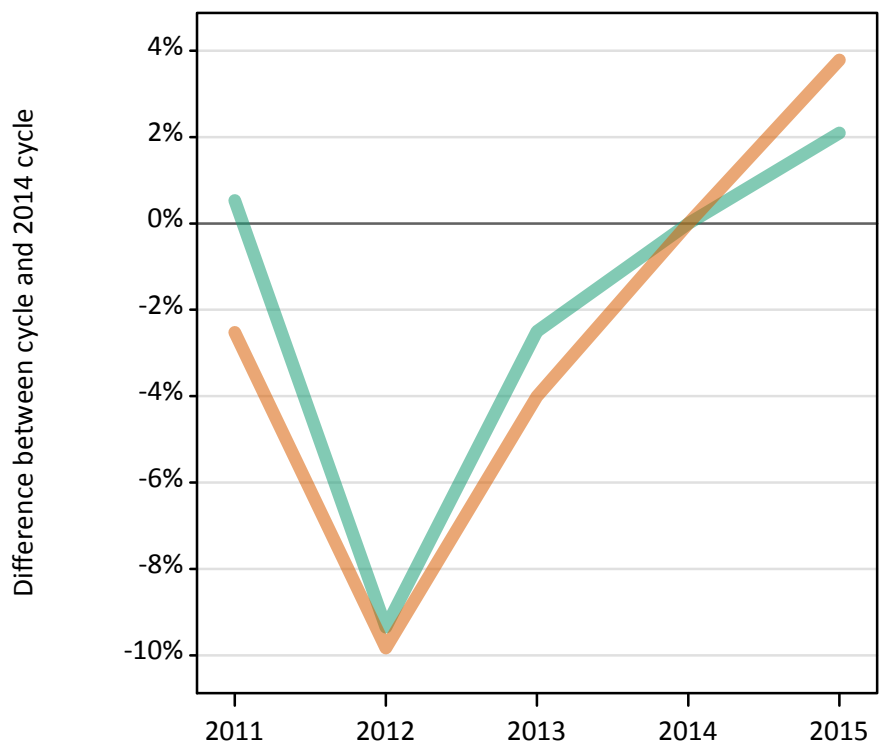
Placed 18 year old applicants: entry rate (indexed to 100 = Men)

Applicant Status	Sex	2011	2012	2013	2014	2015
Placed	Men	100	100	100	100	100
	Women	128	133	131	132	135

S.16 Placed applicants from England by sex: 14 days after A level results day

Placed applicants: change relative to 2014 cycle totals

Men
Women



S.17 Placed applicants from England by sex: 14 days after A level results day

Applicant Status	Sex	2011	2012	2013	2014	2015
Placed	Men	157,390	141,920	152,650	156,560	159,830
	Women	192,510	178,070	189,580	197,480	204,950
	All	349,890	319,990	342,230	354,040	364,780

S.18 Placed applicants from England by sex: 14 days after A level results day

Placed applicants: change relative to 2014 cycle totals

Applicant Status	Sex	2011	2012	2013	2014	2015
Placed	Men	1%	-9%	-2%	0%	2%
	Women	-3%	-10%	-4%	0%	4%
	All	-1%	-10%	-3%	0%	3%

S.19 Placed applicants from England by sex: 14 days after A level results day

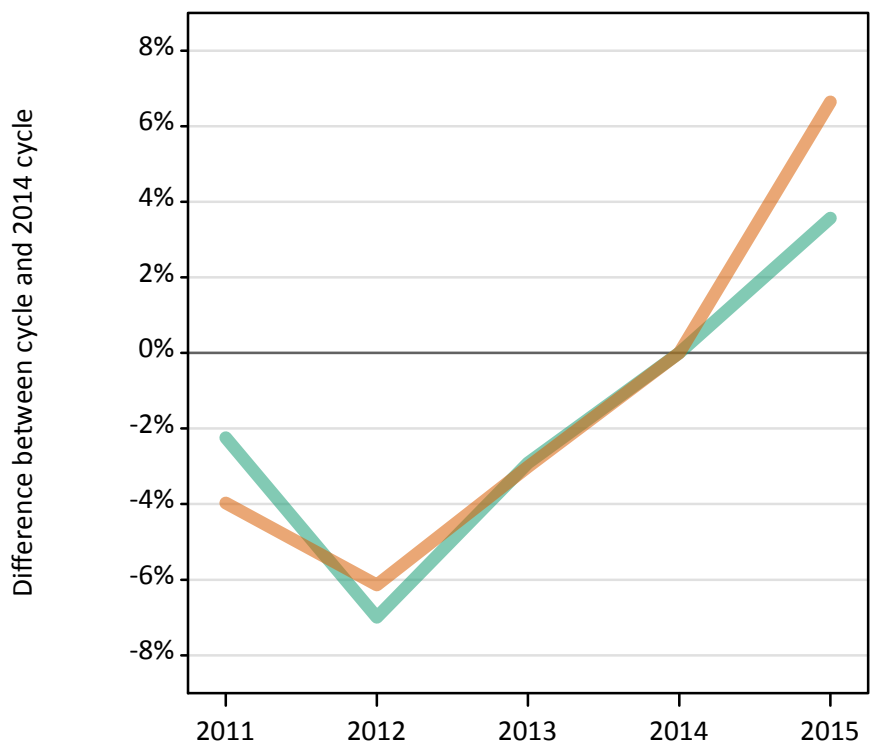
Placed applicants: absolute change relative to 2014 cycle totals

Applicant Status	Sex	2011	2012	2013	2014	2015
Placed	Men	830	-14,640	-3,910	0	3,270
	Women	-4,980	-19,410	-7,900	0	7,470
	All	-4,150	-34,050	-11,820	0	10,740

S.20 Placed 18 year old applicants from England by sex: 14 days after A level results day

Placed 18 year old applicants: change relative to 2014 cycle totals

Men
Women



S.21 Placed 18 year old applicants from England by sex: 14 days after A level results day

Applicant Status	Sex	2011	2012	2013	2014	2015
Placed	Men	83,160	79,110	82,590	85,060	88,100
	Women	101,060	98,780	102,070	105,240	112,240
	All	184,210	177,900	184,650	190,300	200,330

S.22 Placed 18 year old applicants from England by sex: 14 days after A level results day

Placed 18 year old applicants: change relative to 2014 cycle totals

Applicant Status	Sex	2011	2012	2013	2014	2015
Placed	Men	-2%	-7%	-3%	0%	4%
	Women	-4%	-6%	-3%	0%	7%
	All	-3%	-7%	-3%	0%	5%

S.23 Placed 18 year old applicants from England by sex: 14 days after A level results day

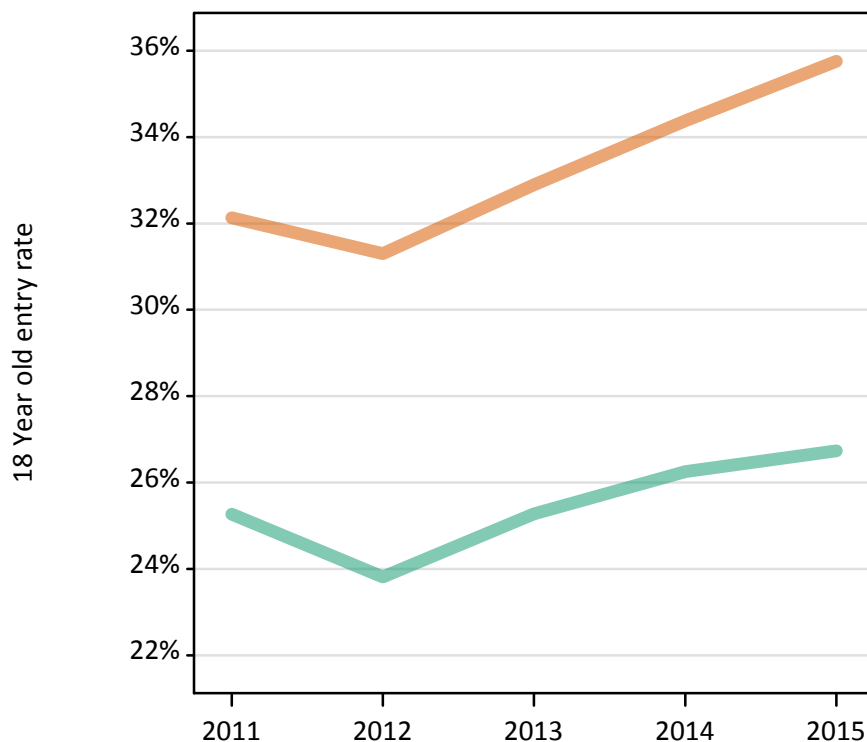
Placed 18 year old applicants: absolute change relative to 2014 cycle totals

Applicant Status	Sex	2011	2012	2013	2014	2015
Placed	Men	-1,910	-5,950	-2,480	0	3,040
	Women	-4,180	-6,460	-3,170	0	7,000
	All	-6,090	-12,410	-5,650	0	10,030

S.24 Placed 18 year old applicants from England by sex: 14 days after A level results day

Placed 18 year old applicants: entry rate

Men
Women



S.25 Placed 18 year old applicants from England by sex: 14 days after A level results day

Placed 18 year old applicants: entry rate

Applicant Status	Sex	2011	2012	2013	2014	2015
Placed	Men	25.3%	23.8%	25.3%	26.3%	26.7%
	Women	32.1%	31.3%	32.9%	34.4%	35.8%
	All	28.6%	27.5%	29.0%	30.2%	31.1%

S.26 Placed 18 year old applicants from England by sex: 14 days after A level results day

Placed 18 year old applicants: entry rate (indexed to 100 = Men)

Applicant Status	Sex	2011	2012	2013	2014	2015
Placed	Men	100	100	100	100	100
	Women	127	131	130	131	134

S.27 Placed applicants from Northern Ireland by sex: 14 days after A level results day

Placed applicants: change relative to 2014 cycle totals

Men
Women



S.28 Placed applicants from Northern Ireland by sex: 14 days after A level results day

Applicant Status	Sex	2011	2012	2013	2014	2015
Placed	Men	6,200	5,750	6,480	6,460	6,150
	Women	7,400	7,080	7,730	7,740	7,720
	All	13,600	12,830	14,210	14,200	13,870

S.29 Placed applicants from Northern Ireland by sex: 14 days after A level results day

Placed applicants: change relative to 2014 cycle totals

Applicant Status	Sex	2011	2012	2013	2014	2015
Placed	Men	-4%	-11%	0%	0%	-5%
	Women	-4%	-9%	-0%	0%	-0%
	All	-4%	-10%	0%	0%	-2%

S.30 Placed applicants from Northern Ireland by sex: 14 days after A level results day

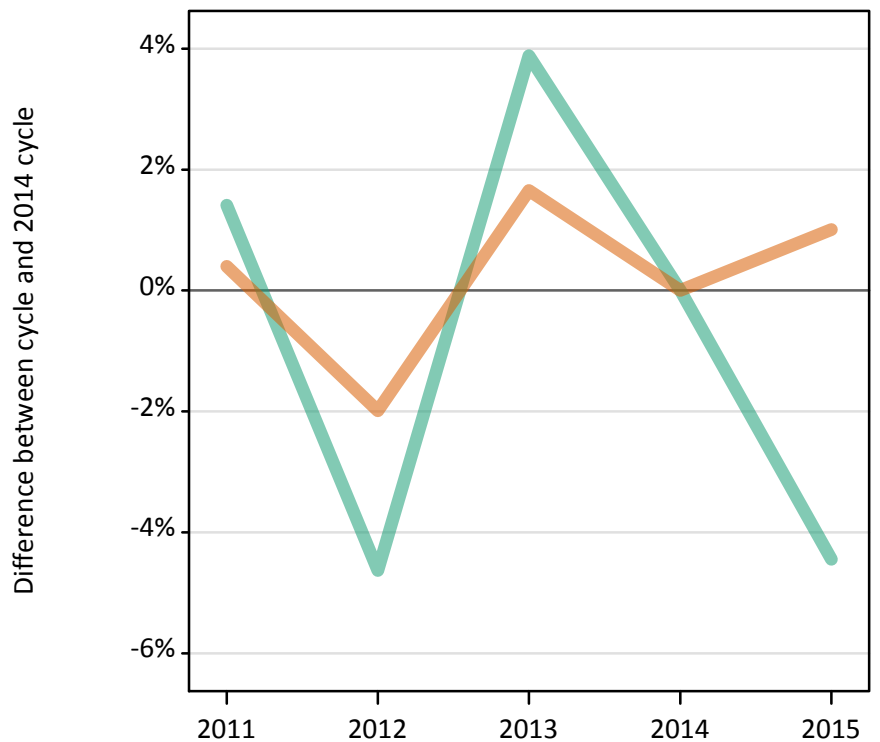
Placed applicants: absolute change relative to 2014 cycle totals

Applicant Status	Sex	2011	2012	2013	2014	2015
Placed	Men	-260	-710	20	0	-310
	Women	-340	-660	0	0	-10
	All	-600	-1,370	10	0	-320

S.31 Placed 18 year old applicants from Northern Ireland by sex: 14 days after A level results day

Placed 18 year old applicants: change relative to 2014 cycle totals

Men
Women



S.32 Placed 18 year old applicants from Northern Ireland by sex: 14 days after A level results day

Applicant Status	Sex	2011	2012	2013	2014	2015
Placed	Men	3,810	3,590	3,910	3,760	3,590
	Women	4,790	4,680	4,850	4,770	4,820
	All	8,600	8,260	8,760	8,530	8,410

S.33 Placed 18 year old applicants from Northern Ireland by sex: 14 days after A level results day

Placed 18 year old applicants: change relative to 2014 cycle totals

Applicant Status	Sex	2011	2012	2013	2014	2015
Placed	Men	1%	-5%	4%	0%	-4%
	Women	0%	-2%	2%	0%	1%
	All	1%	-3%	3%	0%	-1%

S.34 Placed 18 year old applicants from Northern Ireland by sex: 14 days after A level results day

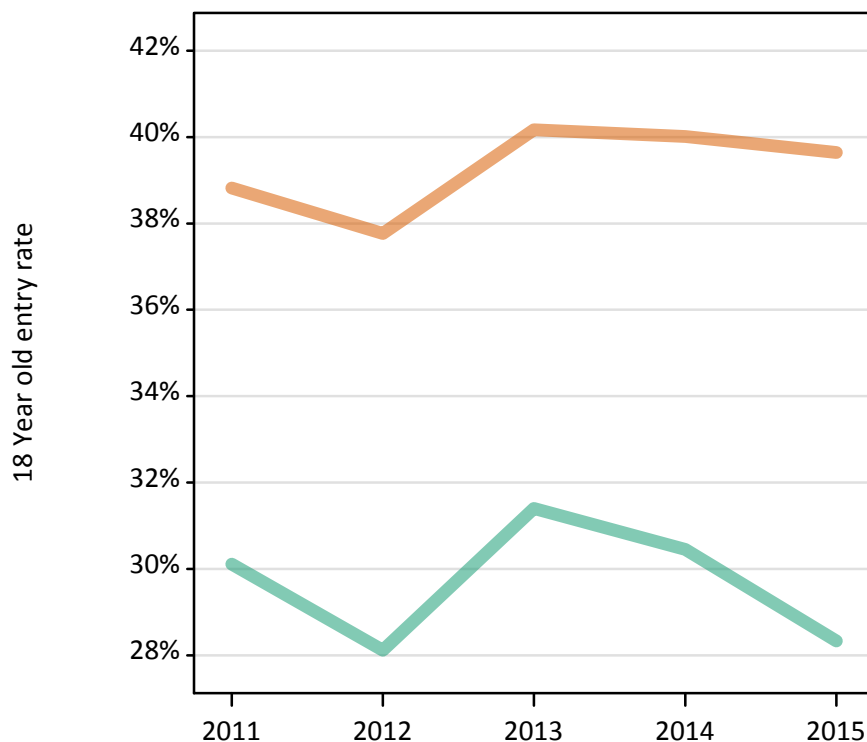
Placed 18 year old applicants: absolute change relative to 2014 cycle totals

Applicant Status	Sex	2011	2012	2013	2014	2015
Placed	Men	50	-170	150	0	-170
	Women	20	-100	80	0	50
	All	70	-270	230	0	-120

S.35 Placed 18 year old applicants from Northern Ireland by sex: 14 days after A level results day

Placed 18 year old applicants: entry rate

Men
Women



S.36 Placed 18 year old applicants from Northern Ireland by sex: 14 days after A level results day

Placed 18 year old applicants: entry rate

Applicant Status	Sex	2011	2012	2013	2014	2015
Placed	Men	30.1%	28.1%	31.4%	30.5%	28.3%
	Women	38.8%	37.8%	40.2%	40.0%	39.6%
	All	34.4%	32.9%	35.7%	35.2%	33.9%

S.37 Placed 18 year old applicants from Northern Ireland by sex: 14 days after A level results day

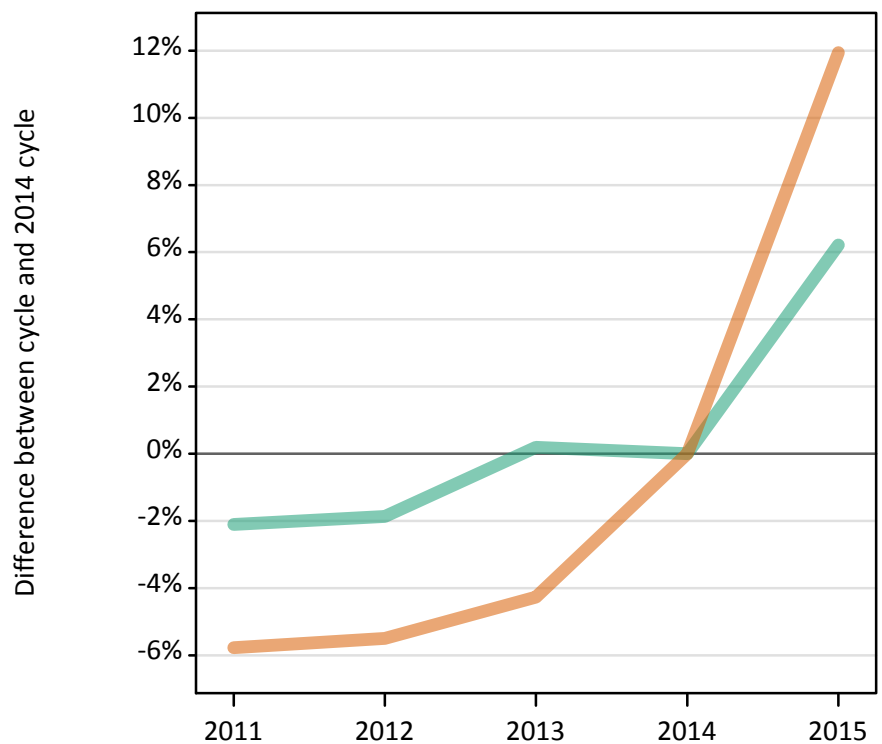
Placed 18 year old applicants: entry rate (indexed to 100 = Men)

Applicant Status	Sex	2011	2012	2013	2014	2015
Placed	Men	100	100	100	100	100
	Women	129	134	128	131	140

S.38 Placed applicants from Scotland by sex: 14 days after A level results day

Placed applicants: change relative to 2014 cycle totals

Men
Women



S.39 Placed applicants from Scotland by sex: 14 days after A level results day

Applicant Status	Sex	2011	2012	2013	2014	2015
Placed	Men	11,950	11,980	12,230	12,200	12,960
	Women	16,150	16,200	16,410	17,140	19,190
	All	28,100	28,170	28,640	29,340	32,150

S.40 Placed applicants from Scotland by sex: 14 days after A level results day

Placed applicants: change relative to 2014 cycle totals

Applicant Status	Sex	2011	2012	2013	2014	2015
Placed	Men	-2%	-2%	0%	0%	6%
	Women	-6%	-6%	-4%	0%	12%
	All	-4%	-4%	-2%	0%	10%

S.41 Placed applicants from Scotland by sex: 14 days after A level results day

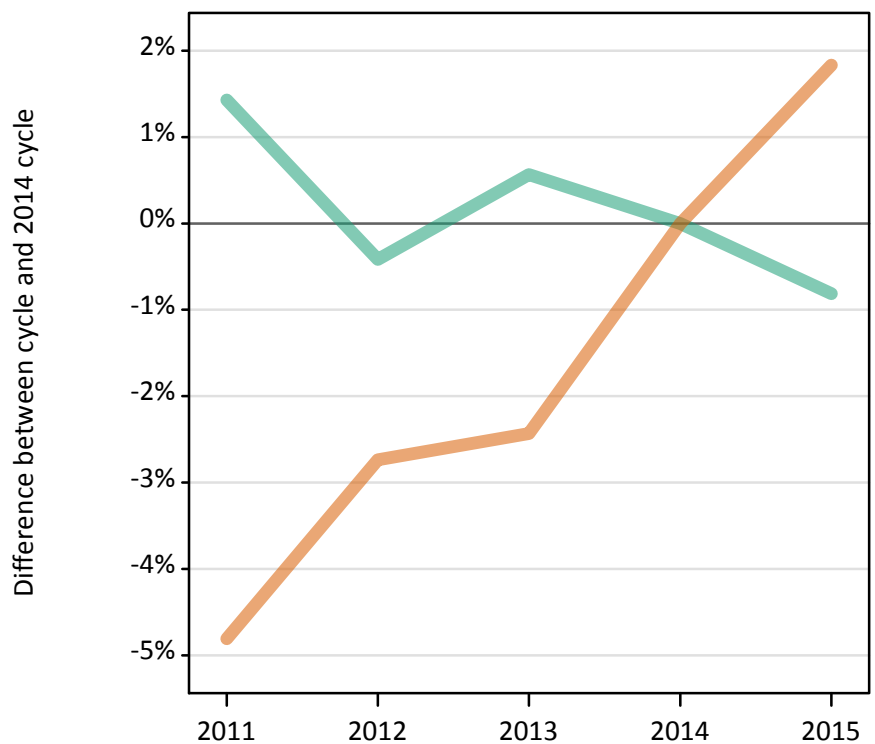
Placed applicants: absolute change relative to 2014 cycle totals

Applicant Status	Sex	2011	2012	2013	2014	2015
Placed	Men	-260	-230	20	0	760
	Women	-990	-940	-730	0	2,050
	All	-1,250	-1,170	-710	0	2,810

S.42 Placed 18 year old applicants from Scotland by sex: 14 days after A level results day

Placed 18 year old applicants: change relative to 2014 cycle totals

Men
Women



S.43 Placed 18 year old applicants from Scotland by sex: 14 days after A level results day

Applicant Status	Sex	2011	2012	2013	2014	2015
Placed	Men	6,100	5,990	6,050	6,020	5,970
	Women	7,900	8,070	8,100	8,300	8,450
	All	14,000	14,060	14,150	14,320	14,420

S.44 Placed 18 year old applicants from Scotland by sex: 14 days after A level results day

Placed 18 year old applicants: change relative to 2014 cycle totals

Applicant Status	Sex	2011	2012	2013	2014	2015
Placed	Men	1%	-0%	1%	0%	-1%
	Women	-5%	-3%	-2%	0%	2%
	All	-2%	-2%	-1%	0%	1%

S.45 Placed 18 year old applicants from Scotland by sex: 14 days after A level results day

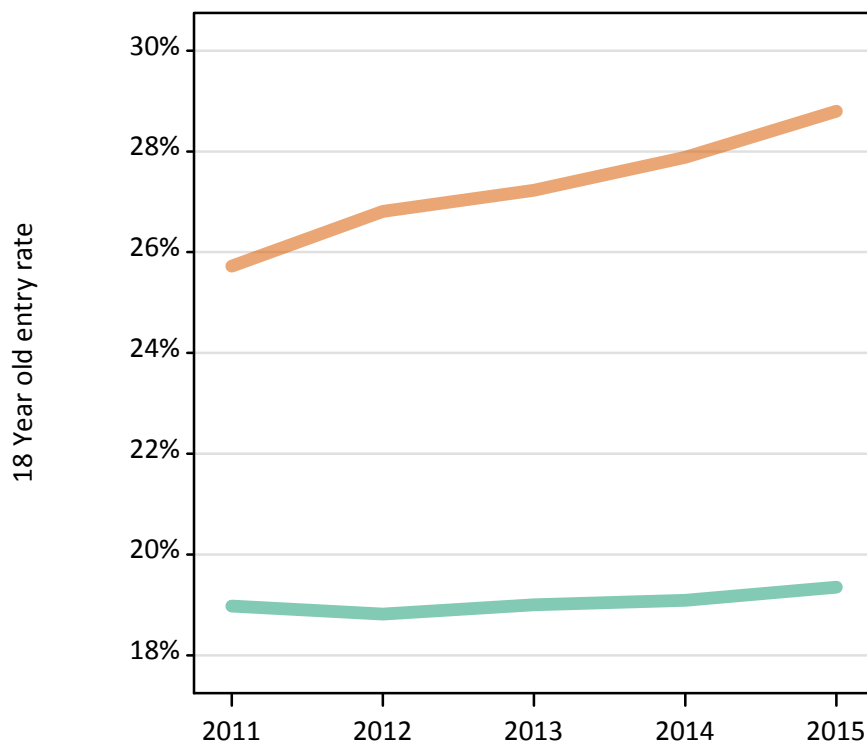
Placed 18 year old applicants: absolute change relative to 2014 cycle totals

Applicant Status	Sex	2011	2012	2013	2014	2015
Placed	Men	90	-30	30	0	-50
	Women	-400	-230	-200	0	150
	All	-310	-250	-170	0	100

S.46 Placed 18 year old applicants from Scotland by sex: 14 days after A level results day

Placed 18 year old applicants: entry rate

Men
Women



S.47 Placed 18 year old applicants from Scotland by sex: 14 days after A level results day

Placed 18 year old applicants: entry rate

Applicant Status	Sex	2011	2012	2013	2014	2015
Placed	Men	19.0%	18.8%	19.0%	19.1%	19.4%
	Women	25.7%	26.8%	27.2%	27.9%	28.8%
	All	22.3%	22.7%	23.0%	23.4%	24.0%

S.48 Placed 18 year old applicants from Scotland by sex: 14 days after A level results day

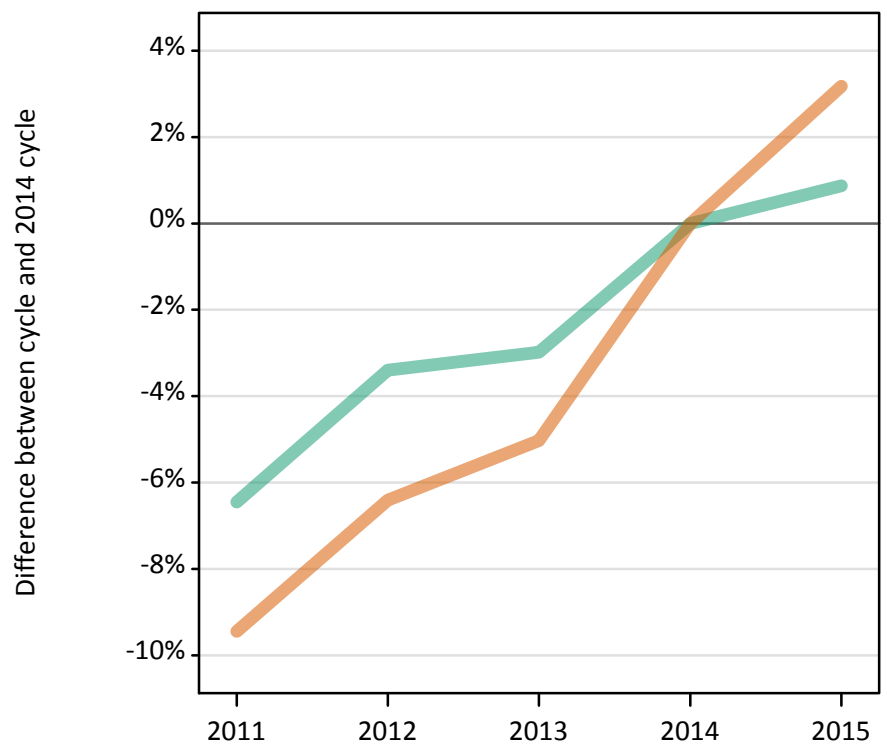
Placed 18 year old applicants: entry rate (indexed to 100 = Men)

Applicant Status	Sex	2011	2012	2013	2014	2015
Placed	Men	100	100	100	100	100
	Women	136	142	143	146	149

S.49 Placed applicants from Wales by sex: 14 days after A level results day

Placed applicants: change relative to 2014 cycle totals

Men
Women



S.50 Placed applicants from Wales by sex: 14 days after A level results day

Applicant Status	Sex	2011	2012	2013	2014	2015
Placed	Men	7,430	7,670	7,700	7,940	8,010
	Women	9,790	10,120	10,270	10,810	11,150
	All	17,220	17,790	17,970	18,750	19,160

S.51 Placed applicants from Wales by sex: 14 days after A level results day

Placed applicants: change relative to 2014 cycle totals

Applicant Status	Sex	2011	2012	2013	2014	2015
Placed	Men	-6%	-3%	-3%	0%	1%
	Women	-9%	-6%	-5%	0%	3%
	All	-8%	-5%	-4%	0%	2%

S.52 Placed applicants from Wales by sex: 14 days after A level results day

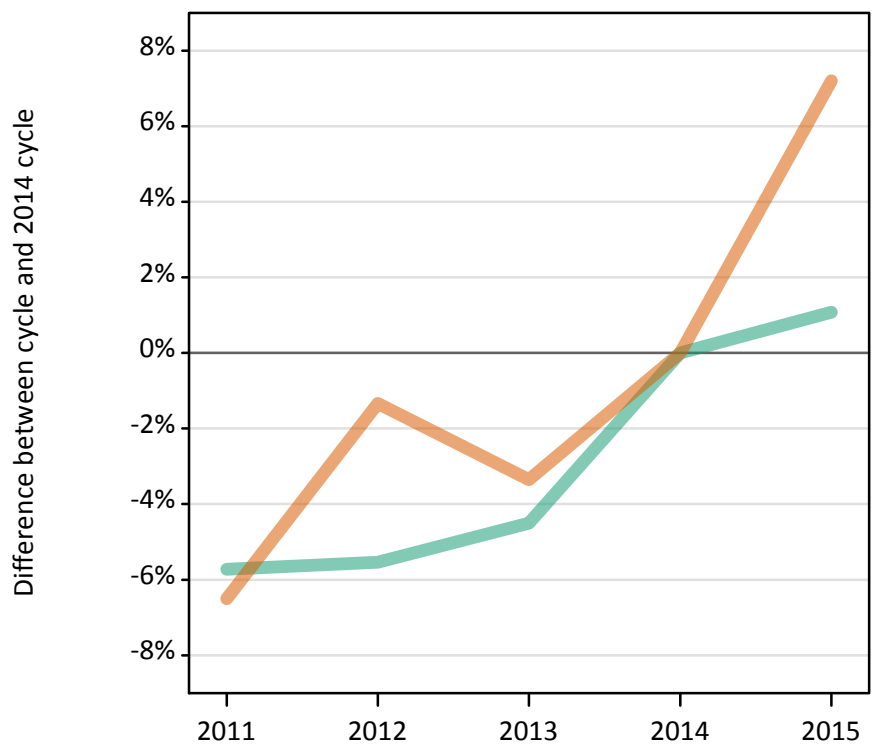
Placed applicants: absolute change relative to 2014 cycle totals

Applicant Status	Sex	2011	2012	2013	2014	2015
Placed	Men	-510	-270	-240	0	70
	Women	-1,020	-690	-540	0	340
	All	-1,530	-960	-780	0	410

S.53 Placed 18 year old applicants from Wales by sex: 14 days after A level results day

Placed 18 year old applicants: change relative to 2014 cycle totals

Men
Women



S.54 Placed 18 year old applicants from Wales by sex: 14 days after A level results day

Applicant Status	Sex	2011	2012	2013	2014	2015
Placed	Men	4,100	4,110	4,160	4,350	4,400
	Women	5,320	5,620	5,500	5,690	6,100
	All	9,430	9,730	9,660	10,040	10,500

S.55 Placed 18 year old applicants from Wales by sex: 14 days after A level results day

Placed 18 year old applicants: change relative to 2014 cycle totals

Applicant Status	Sex	2011	2012	2013	2014	2015
Placed	Men	-6%	-6%	-5%	0%	1%
	Women	-6%	-1%	-3%	0%	7%
	All	-6%	-3%	-4%	0%	5%

S.56 Placed 18 year old applicants from Wales by sex: 14 days after A level results day

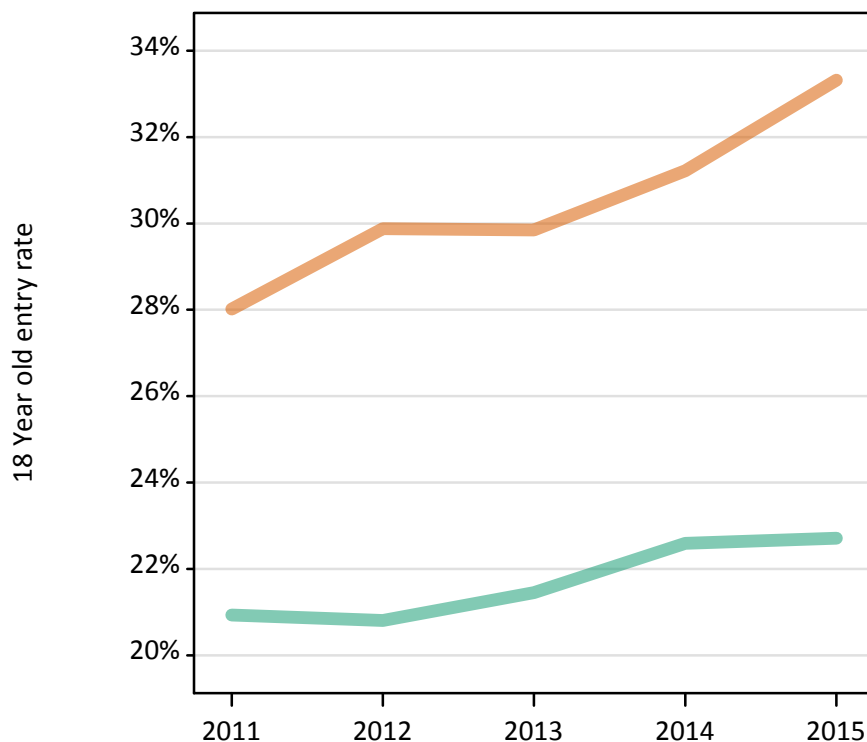
Placed 18 year old applicants: absolute change relative to 2014 cycle totals

Applicant Status	Sex	2011	2012	2013	2014	2015
Placed	Men	-250	-240	-200	0	50
	Women	-370	-80	-190	0	410
	All	-620	-320	-390	0	460

S.57 Placed 18 year old applicants from Wales by sex: 14 days after A level results day

Placed 18 year old applicants: entry rate

Men
Women



S.58 Placed 18 year old applicants from Wales by sex: 14 days after A level results day

Placed 18 year old applicants: entry rate

Applicant Status	Sex	2011	2012	2013	2014	2015
Placed	Men	20.9%	20.8%	21.4%	22.6%	22.7%
	Women	28.0%	29.9%	29.8%	31.2%	33.3%
	All	24.4%	25.2%	25.5%	26.8%	27.9%

S.59 Placed 18 year old applicants from Wales by sex: 14 days after A level results day

Placed 18 year old applicants: entry rate (indexed to 100 = Men)

Applicant Status	Sex	2011	2012	2013	2014	2015
Placed	Men	100	100	100	100	100
	Women	134	144	139	138	147

S.60 Placed applicants from the EU (excluding the UK) by sex: 14 days after A level results day

Placed applicants: change relative to 2014 cycle totals

Men
Women



S.61 Placed applicants from the EU (excluding the UK) by sex: 14 days after A level results day

Applicant Status	Sex	2011	2012	2013	2014	2015
Placed	Men	11,270	9,640	10,080	10,650	11,660
	Women	13,840	12,050	12,830	14,130	15,940
	All	25,120	21,690	22,920	24,780	27,610

S.62 Placed applicants from the EU (excluding the UK) by sex: 14 days after A level results day

Placed applicants: change relative to 2014 cycle totals

Applicant Status	Sex	2011	2012	2013	2014	2015
Placed	Men	6%	-10%	-5%	0%	10%
	Women	-2%	-15%	-9%	0%	13%
	All	1%	-12%	-8%	0%	11%

S.63 Placed applicants from the EU (excluding the UK) by sex: 14 days after A level results day

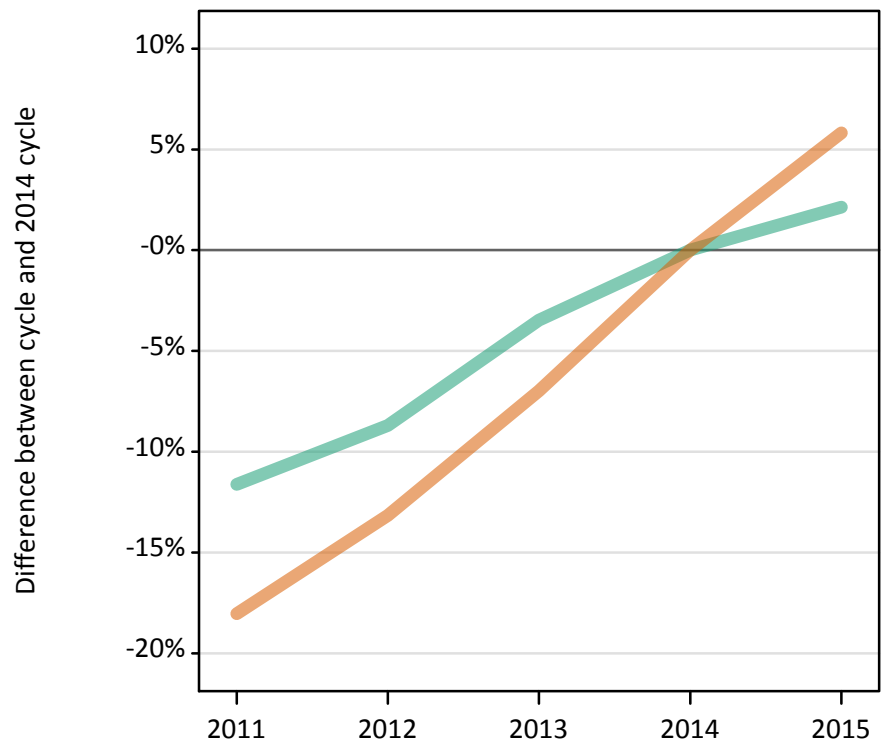
Placed applicants: absolute change relative to 2014 cycle totals

Applicant Status	Sex	2011	2012	2013	2014	2015
Placed	Men	620	-1,010	-570	0	1,010
	Women	-290	-2,080	-1,300	0	1,810
	All	340	-3,090	-1,870	0	2,820

S.64 Placed applicants from overseas (not EU) by sex: 14 days after A level results day

Placed applicants: change relative to 2014 cycle totals

Men
Women



S.65 Placed applicants from overseas (not EU) by sex: 14 days after A level results day

Applicant Status	Sex	2011	2012	2013	2014	2015
Placed	Men	13,710	14,160	14,970	15,510	15,840
	Women	14,460	15,320	16,410	17,640	18,670
	All	28,160	29,480	31,380	33,150	34,510

S.66 Placed applicants from overseas (not EU) by sex: 14 days after A level results day

Placed applicants: change relative to 2014 cycle totals

Applicant Status	Sex	2011	2012	2013	2014	2015
Placed	Men	-12%	-9%	-3%	0%	2%
	Women	-18%	-13%	-7%	0%	6%
	All	-15%	-11%	-5%	0%	4%

S.67 Placed applicants from overseas (not EU) by sex: 14 days after A level results day

Placed applicants: absolute change relative to 2014 cycle totals

Applicant Status	Sex	2011	2012	2013	2014	2015
Placed	Men	-1,800	-1,350	-540	0	330
	Women	-3,180	-2,320	-1,230	0	1,030
	All	-4,980	-3,670	-1,770	0	1,360