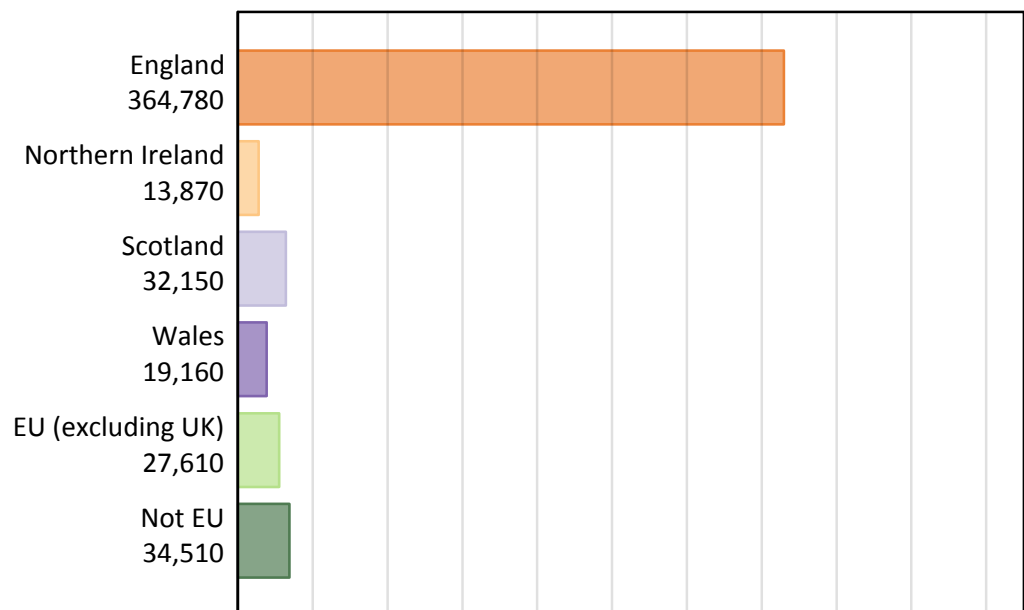


Analysis at 00:05 on Thursday 27 August 2015 (14 days after A level results day)

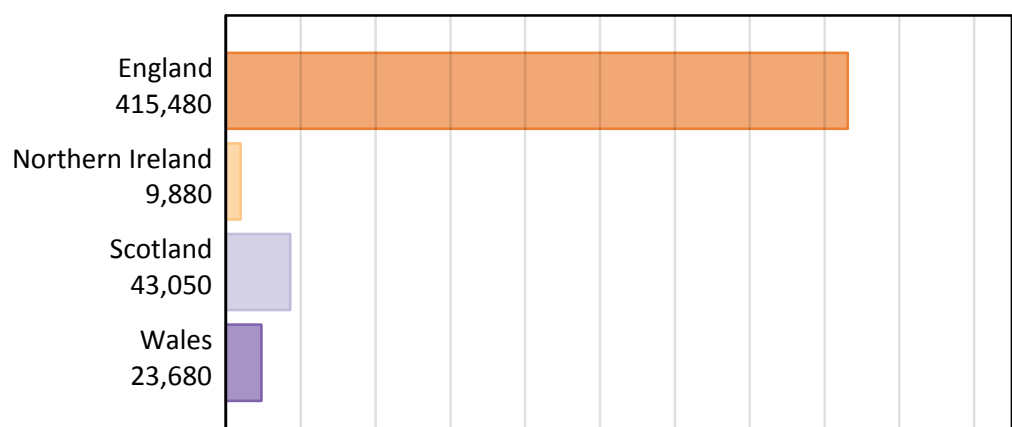
B.1 Placed applicants by country of provider and domicile, 2015 cycle

Domicile of applicant	Country of provider				
	England	Northern Ireland	Scotland	Wales	UK
England	349,290	570	4,600	10,330	364,780
Northern Ireland	3,900	8,710	1,100	170	13,870
Scotland	1,610	20	30,470	50	32,150
Wales	8,240	10	120	10,790	19,160
EU (excluding UK)	21,920	410	4,080	1,200	27,610
Not EU	30,520	160	2,680	1,140	34,510
All	415,480	9,880	43,050	23,680	492,080

B.2 Placed applicants by domicile group

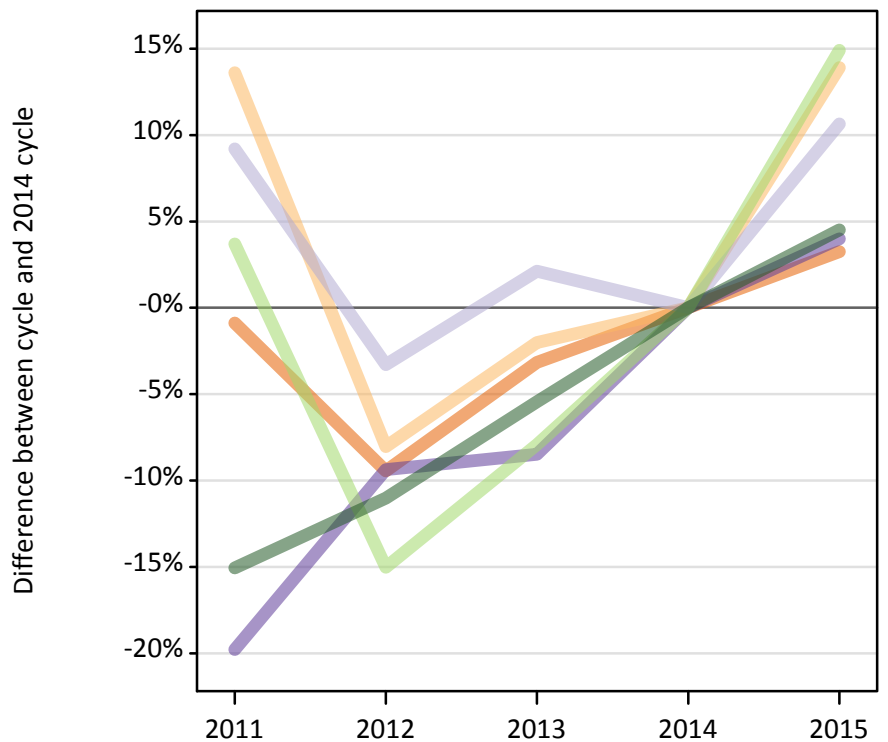
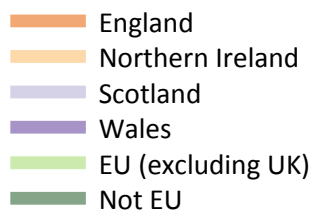


B.3 Placed applicants by country of provider



B.4 Placed applicants at 14 days after A level results day: providers in England

Selected applicant domiciles: difference between cycle and 2014 cycle (at 14 days after A level results day)



B.5 Placed applicants at 14 days after A level results day: providers in England

Placed applicants by domicile (at 14 days after A level results day)

Domicile of applicant	2011	2012	2013	2014	2015
England	335,300	306,370	327,600	338,320	349,290
Northern Ireland	3,890	3,150	3,350	3,420	3,900
Scotland	1,590	1,410	1,490	1,460	1,610
Wales	6,360	7,180	7,250	7,920	8,240
EU (excluding UK)	19,780	16,210	17,560	19,080	21,920
Not EU	24,800	25,980	27,610	29,200	30,520

B.6 Placed applicants at 14 days after A level results day: providers in England

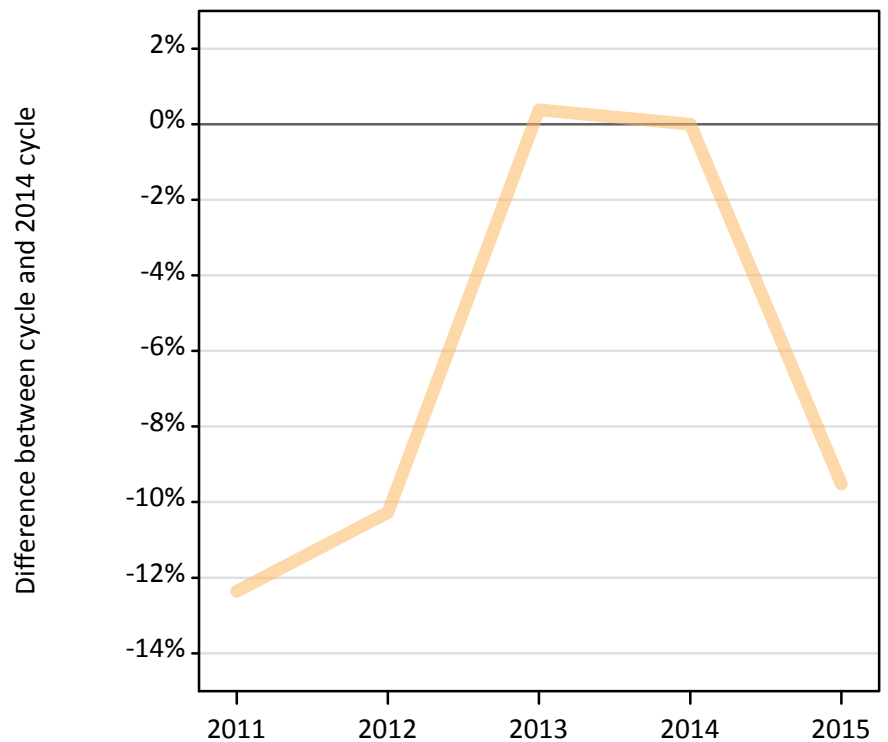
Selected applicant domiciles: difference between cycle and 2014 cycle (at 14 days after A level results day)

Domicile of applicant	2011	2012	2013	2014	2015
England	-1%	-9%	-3%	0%	3%
Northern Ireland	14%	-8%	-2%	0%	14%
Scotland	9%	-3%	2%	0%	11%
Wales	-20%	-9%	-8%	0%	4%
EU (excluding UK)	4%	-15%	-8%	0%	15%
Not EU	-15%	-11%	-5%	0%	5%

B.7 Placed applicants at 14 days after A level results day: providers in Northern Ireland

Selected applicant domiciles: difference between cycle and 2014 cycle (at 14 days after A level results day)

— Northern Ireland



B.8 Placed applicants at 14 days after A level results day: providers in Northern Ireland

Placed applicants by domicile (at 14 days after A level results day)

Domicile of applicant	2011	2012	2013	2014	2015
England	240	260	260	440	570
Northern Ireland	8,430	8,630	9,660	9,620	8,710
Scotland	20	30	10	20	20
Wales	10	0	10	10	10
EU (excluding UK)	430	420	440	460	410
Not EU	110	170	180	200	160

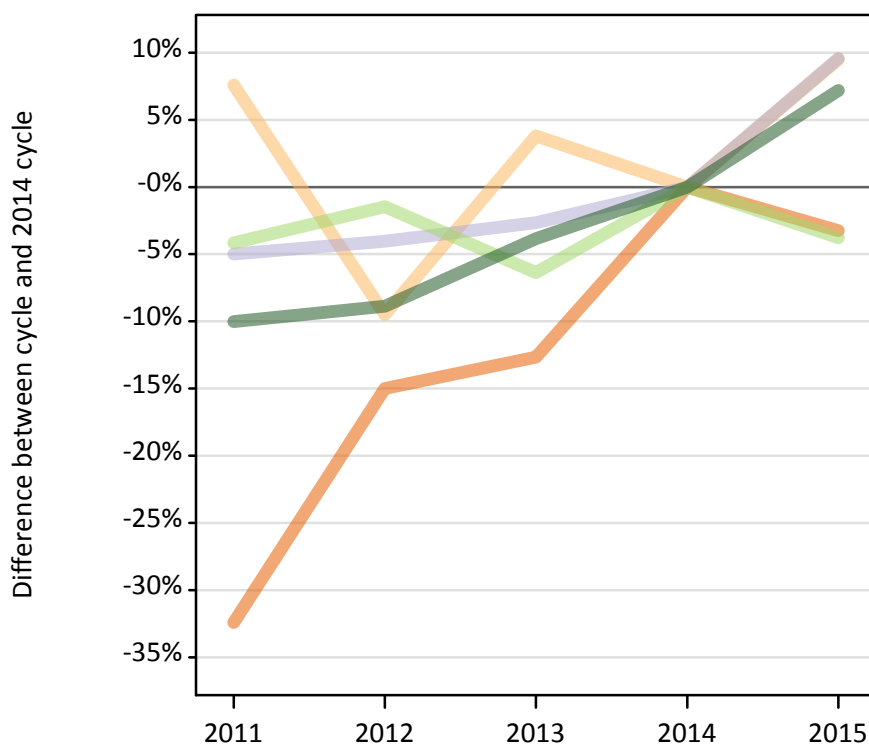
B.9 Placed applicants at 14 days after A level results day: providers in Northern Ireland

Selected applicant domiciles: difference between cycle and 2014 cycle (at 14 days after A level results day)

Domicile of applicant	2011	2012	2013	2014	2015
Northern Ireland	-12%	-10%	0%	0%	-10%

B.10 Placed applicants at 14 days after A level results day: providers in Scotland

Selected applicant domiciles: difference between cycle and 2014 cycle (at 14 days after A level results day)



B.11 Placed applicants at 14 days after A level results day: providers in Scotland

Placed applicants by domicile (at 14 days after A level results day)

Domicile of applicant	2011	2012	2013	2014	2015
England	3,210	4,040	4,150	4,750	4,600
Northern Ireland	1,080	910	1,040	1,000	1,100
Scotland	26,420	26,690	27,070	27,810	30,470
Wales	90	120	110	110	120
EU (excluding UK)	4,060	4,180	3,970	4,240	4,080
Not EU	2,250	2,280	2,410	2,500	2,680

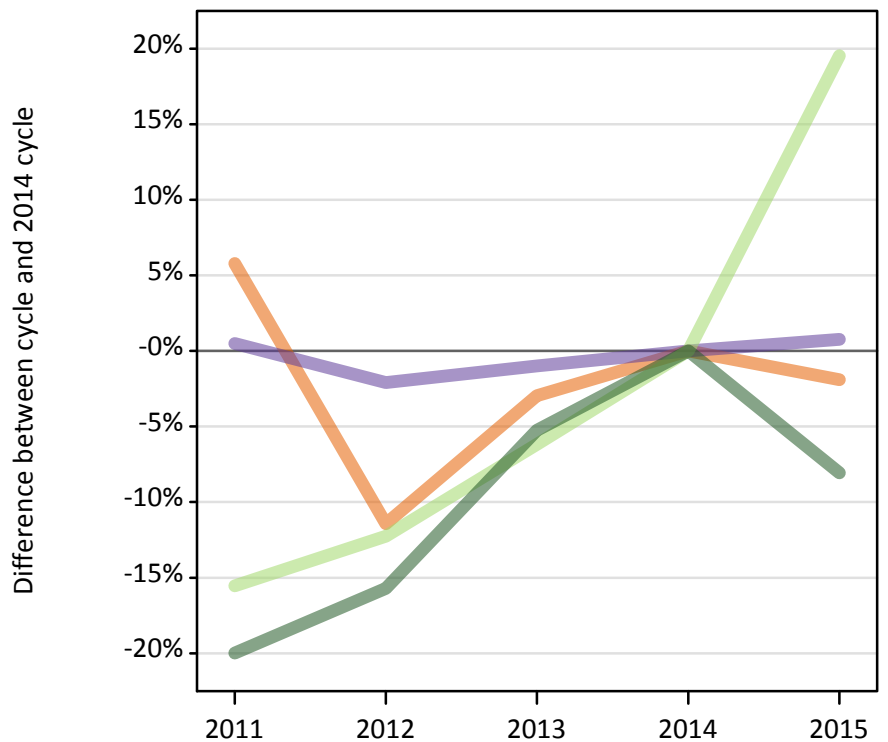
B.12 Placed applicants at 14 days after A level results day: providers in Scotland

Selected applicant domiciles: difference between cycle and 2014 cycle (at 14 days after A level results day)

Domicile of applicant	2011	2012	2013	2014	2015
England	-32%	-15%	-13%	0%	-3%
Northern Ireland	8%	-9%	4%	0%	9%
Scotland	-5%	-4%	-3%	0%	10%
EU (excluding UK)	-4%	-1%	-6%	0%	-4%
Not EU	-10%	-9%	-4%	0%	7%

B.13 Placed applicants at 14 days after A level results day: providers in Wales

Selected applicant domiciles: difference between cycle and 2014 cycle (at 14 days after A level results day)



B.14 Placed applicants at 14 days after A level results day: providers in Wales

Placed applicants by domicile (at 14 days after A level results day)

Domicile of applicant	2011	2012	2013	2014	2015
England	11,140	9,320	10,220	10,530	10,330
Northern Ireland	200	140	160	150	170
Scotland	70	50	60	60	50
Wales	10,760	10,490	10,610	10,710	10,790
EU (excluding UK)	850	880	940	1,000	1,200
Not EU	990	1,050	1,180	1,240	1,140

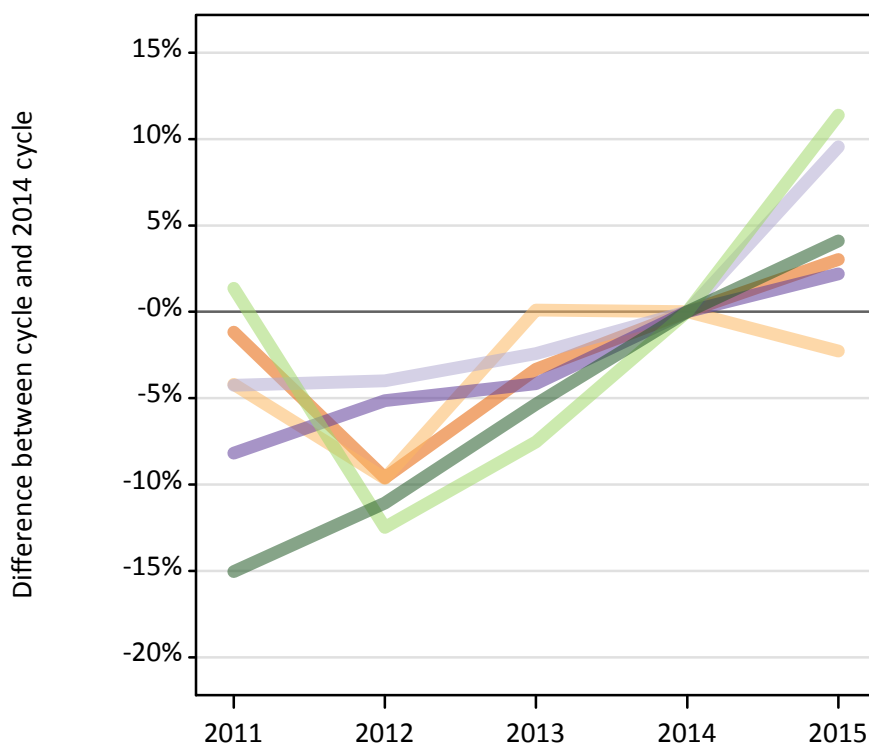
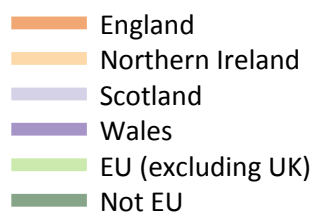
B.15 Placed applicants at 14 days after A level results day: providers in Wales

Selected applicant domiciles: difference between cycle and 2014 cycle (at 14 days after A level results day)

Domicile of applicant	2011	2012	2013	2014	2015
England	6%	-11%	-3%	0%	-2%
Wales	0%	-2%	-1%	0%	1%
EU (excluding UK)	-16%	-12%	-6%	0%	20%
Not EU	-20%	-16%	-5%	0%	-8%

B.16 Placed applicants at 14 days after A level results day: providers in the UK

Selected applicant domiciles: difference between cycle and 2014 cycle (at 14 days after A level results day)



B.17 Placed applicants at 14 days after A level results day: providers in the UK

Placed applicants by domicile (at 14 days after A level results day)

Domicile of applicant	2011	2012	2013	2014	2015
England	349,890	319,990	342,230	354,040	364,780
Northern Ireland	13,600	12,830	14,210	14,200	13,870
Scotland	28,100	28,170	28,640	29,340	32,150
Wales	17,220	17,790	17,970	18,750	19,160
EU (excluding UK)	25,120	21,690	22,920	24,780	27,610
Not EU	28,160	29,480	31,380	33,150	34,510

B.18 Placed applicants at 14 days after A level results day: providers in the UK

Selected applicant domiciles: difference between cycle and 2014 cycle (at 14 days after A level results day)

Domicile of applicant	2011	2012	2013	2014	2015
England	-1%	-10%	-3%	0%	3%
Northern Ireland	-4%	-10%	0%	0%	-2%
Scotland	-4%	-4%	-2%	0%	10%
Wales	-8%	-5%	-4%	0%	2%
EU (excluding UK)	1%	-12%	-8%	0%	11%
Not EU	-15%	-11%	-5%	0%	4%