

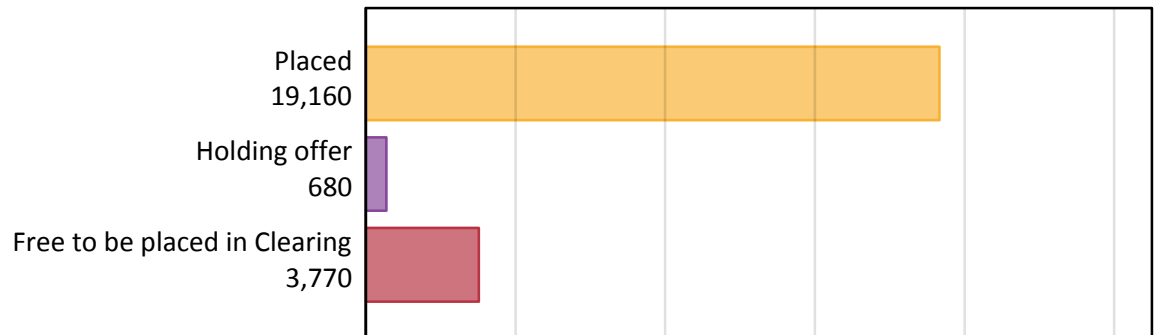
Daily Clearing Analysis: Overview

Analysis at 00:05 on Thursday 27 August 2015 (14 days after A level results day - No Scot.X1)

AX.1 Applicants by type and status from Wales, 2015 cycle

Applicant type	Status	2015
Main scheme	Placed (Clearing)	1,290
	Placed (Adjustment)	30
	Placed (Firm)	15,860
	Placed (Insurance)	1,140
	Placed (Other)	490
	Holding offer	680
	Free to be placed in Clearing	3,770
Direct to Clearing	Placed (Direct to Clearing)	360
	Other (Direct to Clearing)	280
All applicants	Placed	19,160

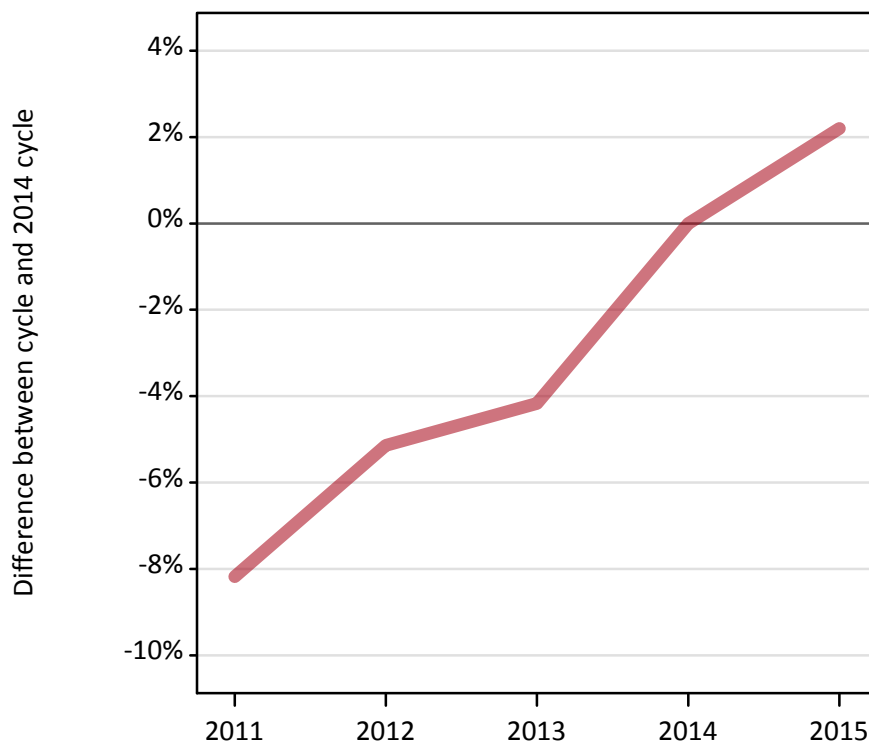
AX.2 Summary of applicants who are placed, holding offers or free to be placed in Clearing (Wales)



AX.3 All placed applicants from Wales: 14 days after A level results day

All placed applicants: difference between cycle and 2014 cycle

Placed



AX.4 All placed applicants from Wales: 14 days after A level results day

All placed applicants: applicants at 14 days after A level results day

Applicant type	Status	2011	2012	2013	2014	2015
All applicants	Placed	17,220	17,790	17,970	18,750	19,160

AX.5 All placed applicants from Wales: 14 days after A level results day

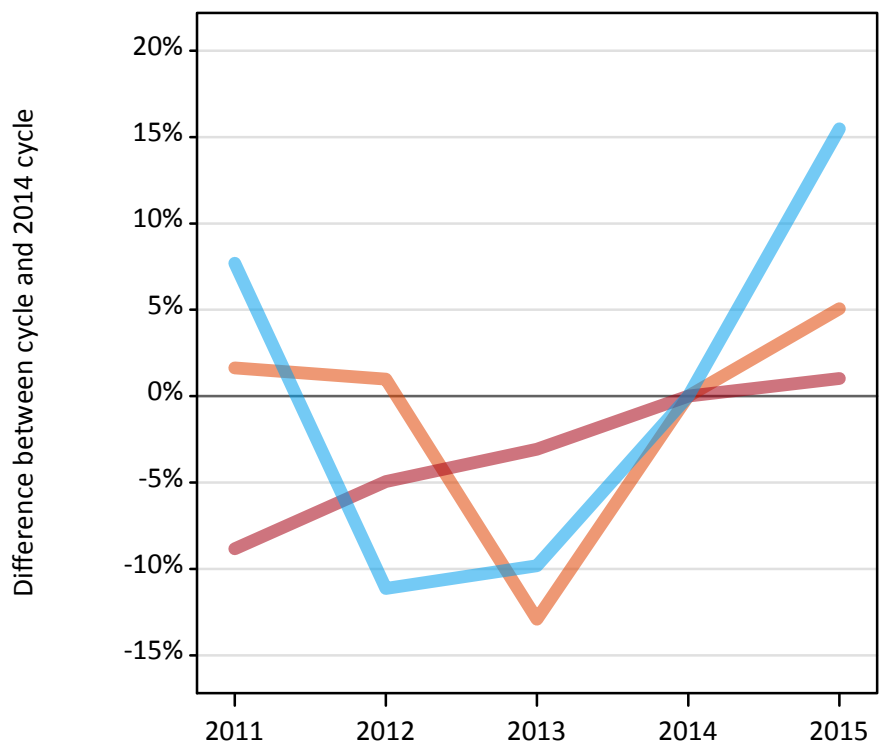
All placed applicants: difference between cycle and 2014 cycle

Applicant type	Status	2011	2012	2013	2014	2015
All applicants	Placed	-8%	-5%	-4%	0%	2%

AX.6 Placed main scheme applicants from Wales: 14 days after A level results day

Selected placed routes: difference between cycle and 2014 cycle

- Placed (Clearing)
- Placed (Firm)
- Placed (Insurance)



AX.7 Placed main scheme applicants from Wales: 14 days after A level results day

All Main scheme placed routes (excluding Adjustment): applicants at 14 days after A level results day

Applicant type	Status	2011	2012	2013	2014	2015
Main scheme	Placed (Clearing)	1,240	1,240	1,070	1,220	1,290
	Placed (Firm)	14,310	14,930	15,220	15,700	15,860
	Placed (Insurance)	1,060	880	890	990	1,140
	Placed (Other)	400	370	420	480	490

AX.8 Placed main scheme applicants from Wales: 14 days after A level results day

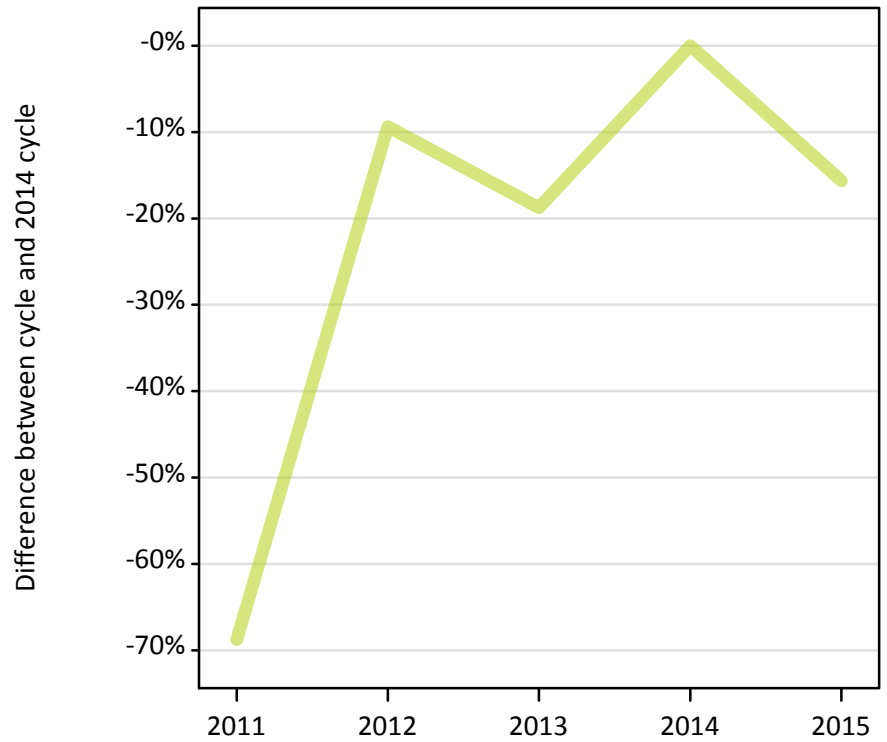
Selected placed routes: difference between cycle and 2014 cycle

Applicant type	Status	2011	2012	2013	2014	2015
Main scheme	Placed (Clearing)	2%	1%	-13%	0%	5%
	Placed (Firm)	-9%	-5%	-3%	0%	1%
	Placed (Insurance)	8%	-11%	-10%	0%	15%

AX.9 Main scheme applicants placed through adjustment: 14 days after A level results day

Placed through adjustment: difference between cycle and 2014 cycle

Placed (Adjustment)



AX.10 Main scheme applicants placed through adjustment: 14 days after A level results day

Placed through adjustment: applicants at 14 days after A level results day

Applicant type	Status	2011	2012	2013	2014	2015
Main scheme	Placed (Adjustment)	10	30	30	30	30

AX.11 Main scheme applicants placed through adjustment: 14 days after A level results day

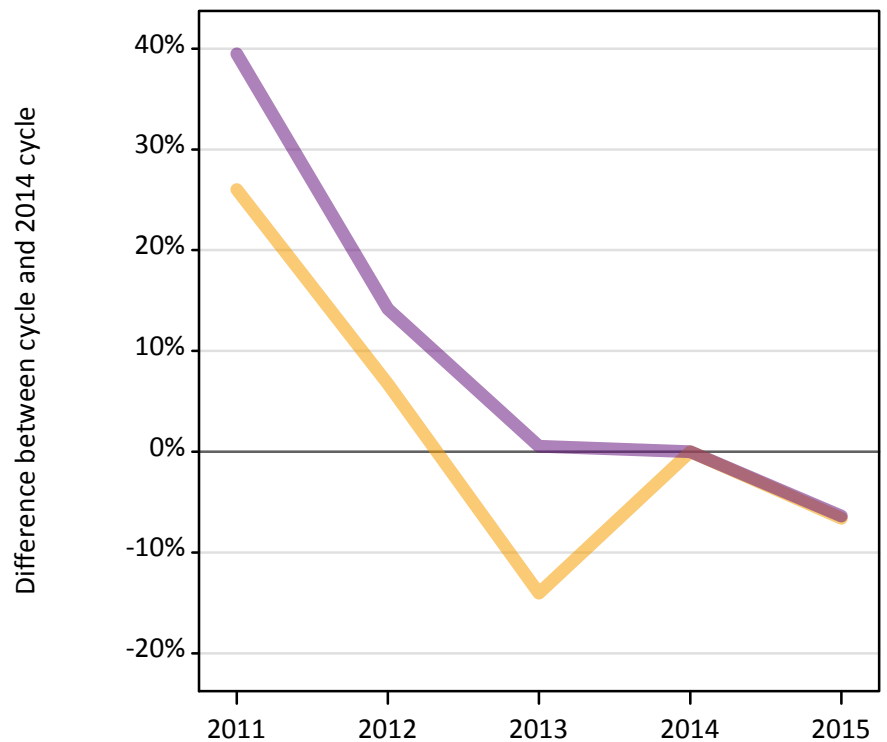
Placed through adjustment: difference between cycle and 2014 cycle

Applicant type	Status	2011	2012	2013	2014	2015
Main scheme	Placed (Adjustment)	-69%	-9%	-19%	0%	-16%

AX.12 Main scheme applicants not currently placed from Wales: 14 days after A level results day

Applicants in unplaced states: difference between cycle and 2014 cycle

— Holding offer
— Free to be placed in Clearing



AX.13 Main scheme applicants not currently placed from Wales: 14 days after A level results day

Applicants in unplaced states: applicants at 14 days after A level results day

Applicant type	Status	2011	2012	2013	2014	2015
Main scheme	Holding offer	920	780	620	730	680
	Free to be placed in Clearing	5,620	4,600	4,050	4,030	3,770

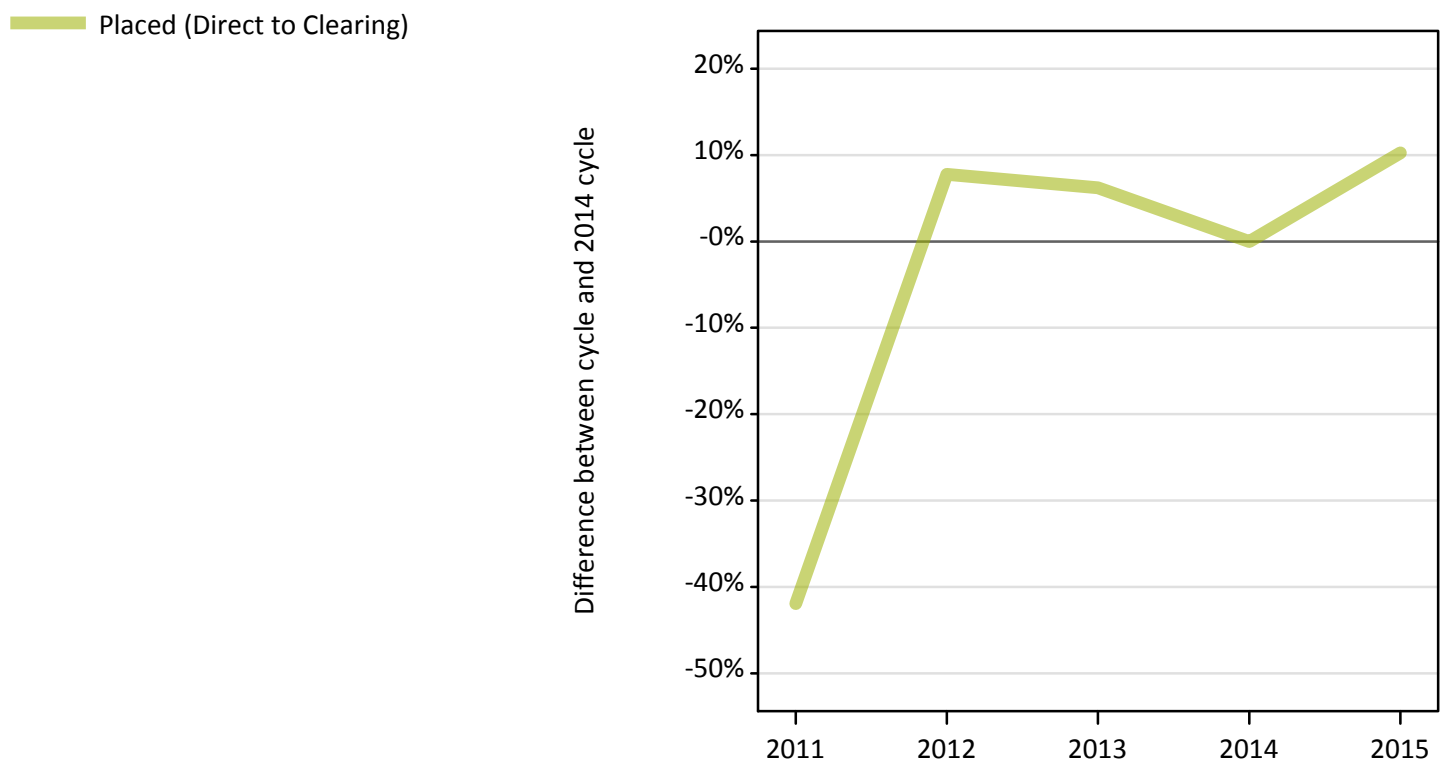
AX.14 Main scheme applicants not currently placed from Wales: 14 days after A level results day

Applicants in unplaced states: difference between cycle and 2014 cycle

Applicant type	Status	2011	2012	2013	2014	2015
Main scheme	Holding offer	26%	7%	-14%	0%	-7%
	Free to be placed in Clearing	39%	14%	1%	0%	-6%

AX.15 Direct to Clearing applicants from Wales: 14 days after A level results day

Placed (Direct to Clearing): difference between cycle and 2014 cycle



AX.16 Direct to Clearing applicants from Wales: 14 days after A level results day

Direct to Clearing 14 days after A level results day

Applicant type	Status	2011	2012	2013	2014	2015
Direct to Clearing	Placed (Direct to Clearing)	190	350	340	320	360
	Other (Direct to Clearing)	230	210	230	250	280

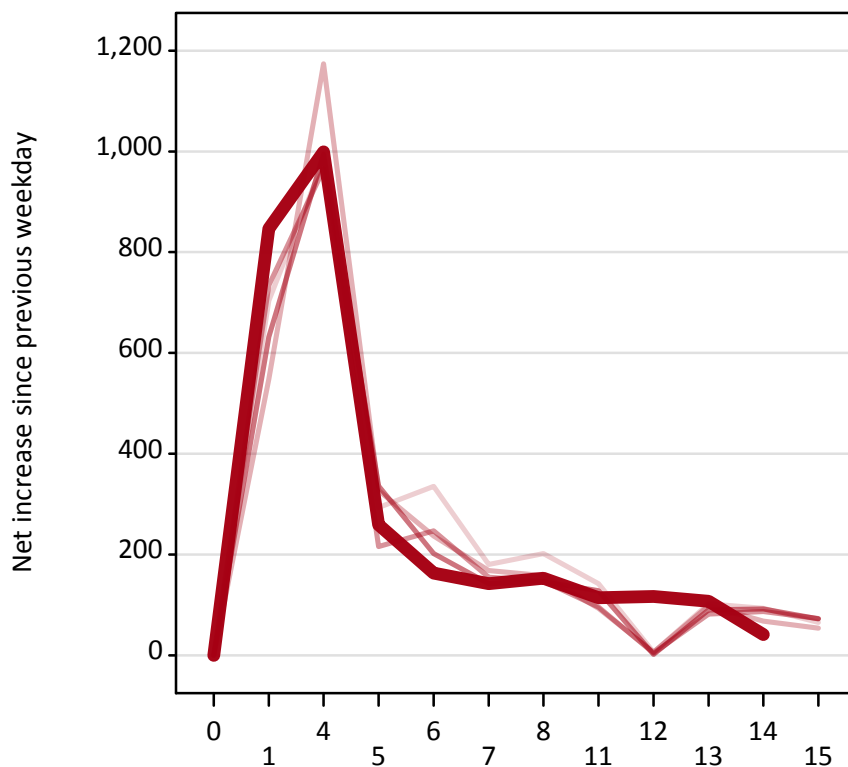
AX.17 Direct to Clearing applicants from Wales: 14 days after A level results day

Placed (Direct to Clearing): difference between cycle and 2014 cycle

Applicant type	Status	2011	2012	2013	2014	2015
Direct to Clearing	Placed (Direct to Clearing)	-42%	8%	6%	0%	10%

AX.18 All Placed: Daily net change (from Wales)

Net increase since previous weekday (2015 cycle up to 14 days after A level results day)



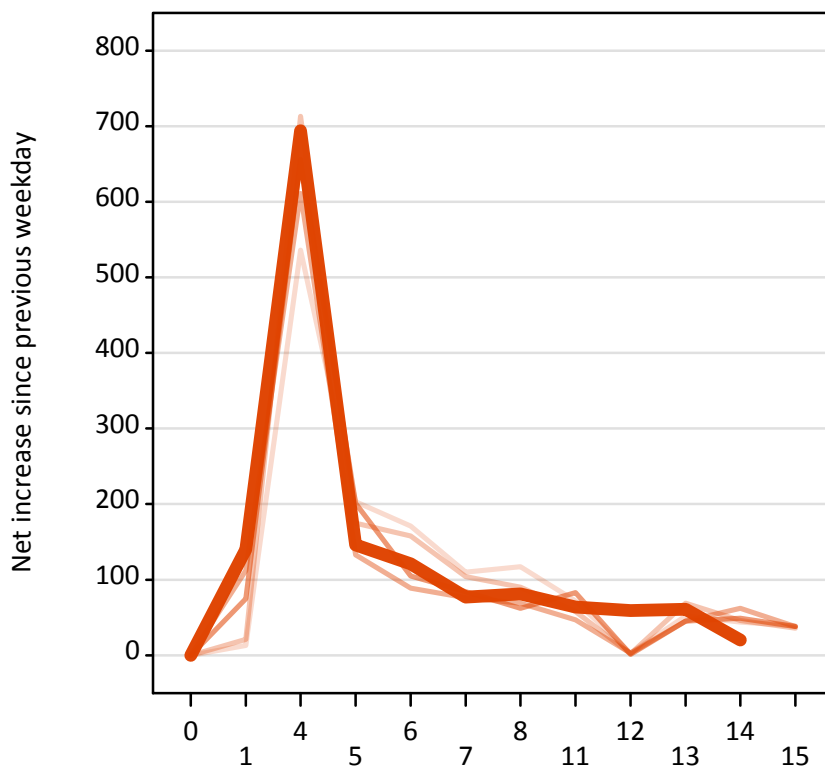
AX.19 All Placed: Daily net change (from Wales)

Net increase since previous weekday (2015 cycle up to 14 days after A level results day)

Applicant status, days since A level results day		2011	2012	2013	2014	2015
All Placed	0	0	0	0	0	0
	1	700	550	730	630	850
	4	980	1,170	970	1,000	1,000
	5	290	330	220	340	260
	6	340	240	250	200	160
	7	180	170	160	140	140
	8	200	160	150	150	150
	11	140	90	100	130	110
	12	10	10	0	0	120
	13	100	100	80	90	110
	14	90	70	90	90	40
	15	70	50	70	70	

AX.20 Placed through Clearing only: Daily net change (from Wales)

Net increase since previous weekday (2015 cycle up to 14 days after A level results day)



AX.21 Placed through Clearing only: Daily net change (from Wales)

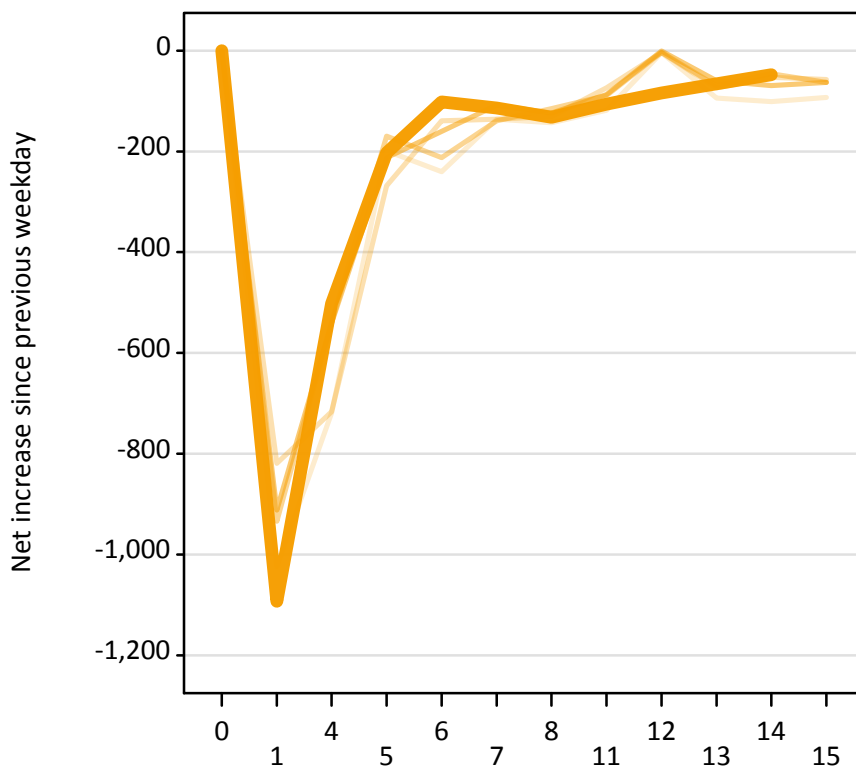
Net increase since previous weekday (2015 cycle up to 14 days after A level results day)

Applicant status, days since A level results day		2011	2012	2013	2014	2015
Placed through Clearing only	0	0	0	0	0	0
	1	10	20	110	80	140
	4	540	710	610	660	690
	5	200	180	130	200	150
	6	170	160	90	110	120
	7	110	100	80	80	80
	8	120	90	70	60	80
	11	70	60	50	80	60
	12	0	0	0	0	60
	13	50	70	50	50	60
	14	40	50	60	50	20
	15	40	40	40	40	

AX.22 Holding Offer: Daily net change (from Wales)

Net increase since previous weekday (2015 cycle up to 14 days after A level results day)

- 2011
- 2012
- 2013
- 2014
- 2015



AX.23 Holding Offer: Daily net change (from Wales)

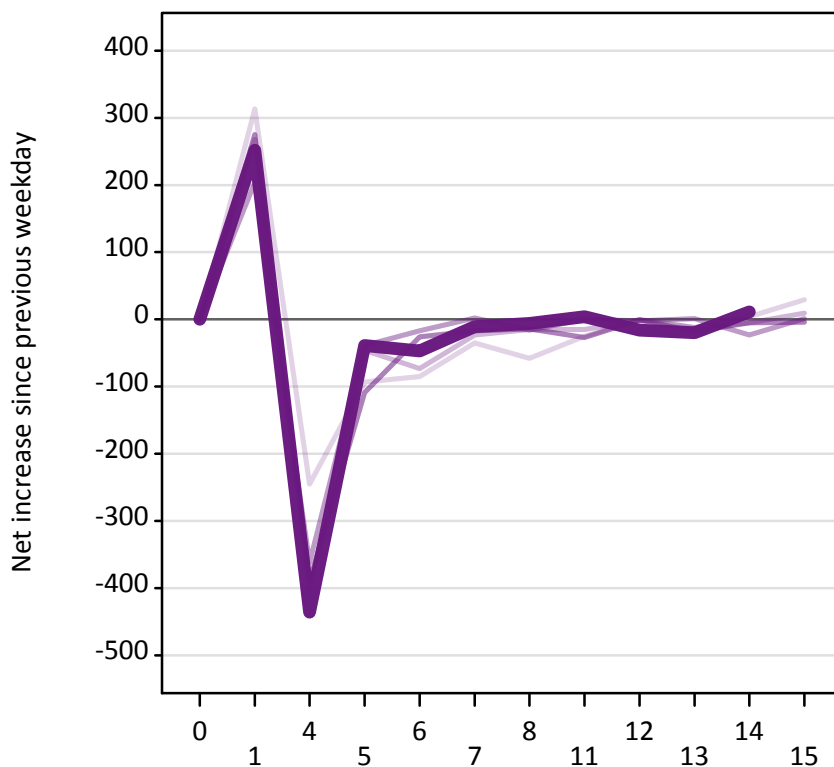
Net increase since previous weekday (2015 cycle up to 14 days after A level results day)

Applicant status, days since A level results day		2011	2012	2013	2014	2015
Holding Offer	0	0	0	0	0	0
	1	-1,020	-820	-930	-910	-1,090
	4	-720	-720	-540	-540	-500
	5	-200	-270	-170	-210	-200
	6	-240	-140	-210	-160	-100
	7	-140	-140	-140	-110	-110
	8	-140	-130	-120	-120	-130
	11	-120	-70	-90	-90	-110
	12	0	0	0	0	-80
	13	-90	-70	-70	-60	-70
	14	-100	-50	-50	-70	-50
	15	-90	-60	-60	-60	-

AX.24 Free to be placed in Clearing: Daily net change (from Wales)

Net increase since previous weekday (2015 cycle up to 14 days after A level results day)

- 2011
- 2012
- 2013
- 2014
- 2015



AX.25 Free to be placed in Clearing: Daily net change (from Wales)

Net increase since previous weekday (2015 cycle up to 14 days after A level results day)

Applicant status, days since A level results day		2011	2012	2013	2014	2015
Free to be placed in Clearing	0	0	0	0	0	0
	1	310	270	200	280	250
	4	-250	-400	-360	-390	-440
	5	-90	-50	-40	-110	-40
	6	-90	-70	-20	-30	-50
	7	-40	-20	0	-20	-10
	8	-60	-20	-20	-10	-10
	11	-30	-20	0	-30	0
	12	0	0	0	0	-20
	13	-10	-10	0	-20	-20
	14	0	-10	-20	-10	10
	15	30	10	0	0	