

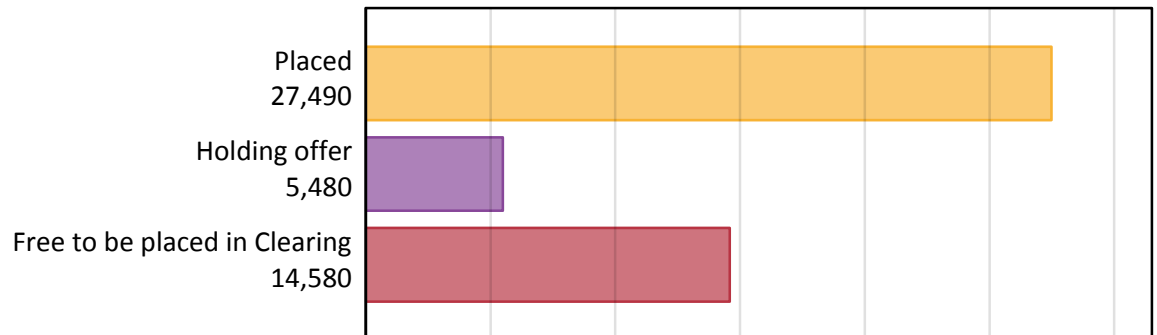
Daily Clearing Analysis: Overview

Analysis at 00:05 on Thursday 27 August 2015 (14 days after A level results day - No Scot.X1)

AX.1 Applicants by type and status from the EU - excluding UK, 2015 cycle

Applicant type	Status	2015
Main scheme	Placed (Clearing)	1,260
	Placed (Adjustment)	40
	Placed (Firm)	22,710
	Placed (Insurance)	2,070
	Placed (Other)	1,090
	Holding offer	5,480
	Free to be placed in Clearing	14,580
Direct to Clearing	Placed (Direct to Clearing)	330
	Other (Direct to Clearing)	380
All applicants	Placed	27,490

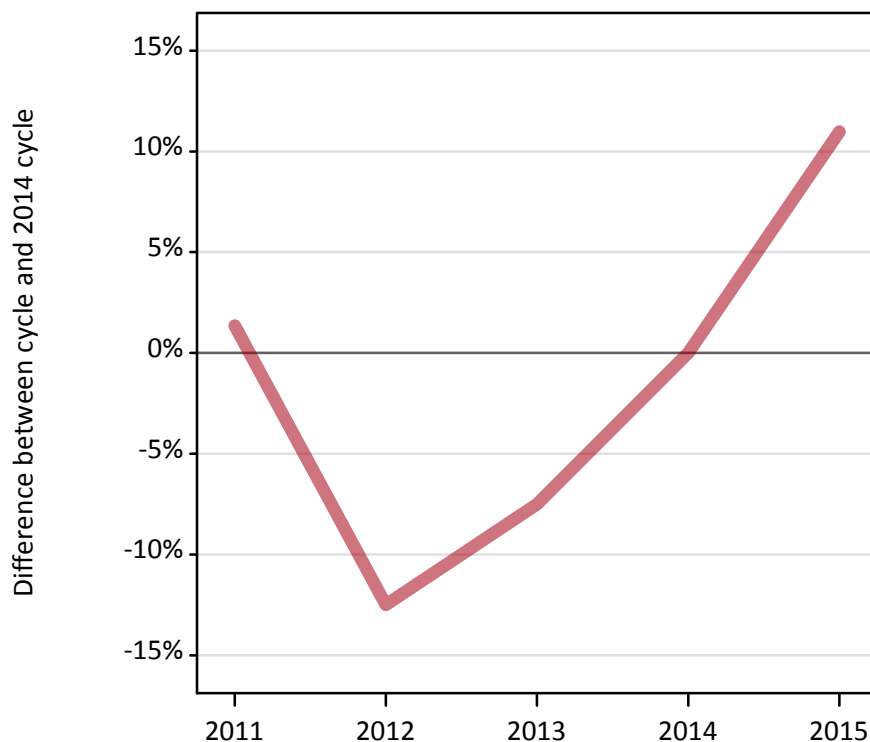
AX.2 Summary of applicants who are placed, holding offers or free to be placed in Clearing (the EU - excluding UK)



AX.3 All placed applicants from the EU - excluding UK: 14 days after A level results day

All placed applicants: difference between cycle and 2014 cycle

Placed



AX.4 All placed applicants from the EU - excluding UK: 14 days after A level results day

All placed applicants: applicants at 14 days after A level results day

Applicant type	Status	2011	2012	2013	2014	2015
All applicants	Placed	25,100	21,670	22,910	24,770	27,490

AX.5 All placed applicants from the EU - excluding UK: 14 days after A level results day

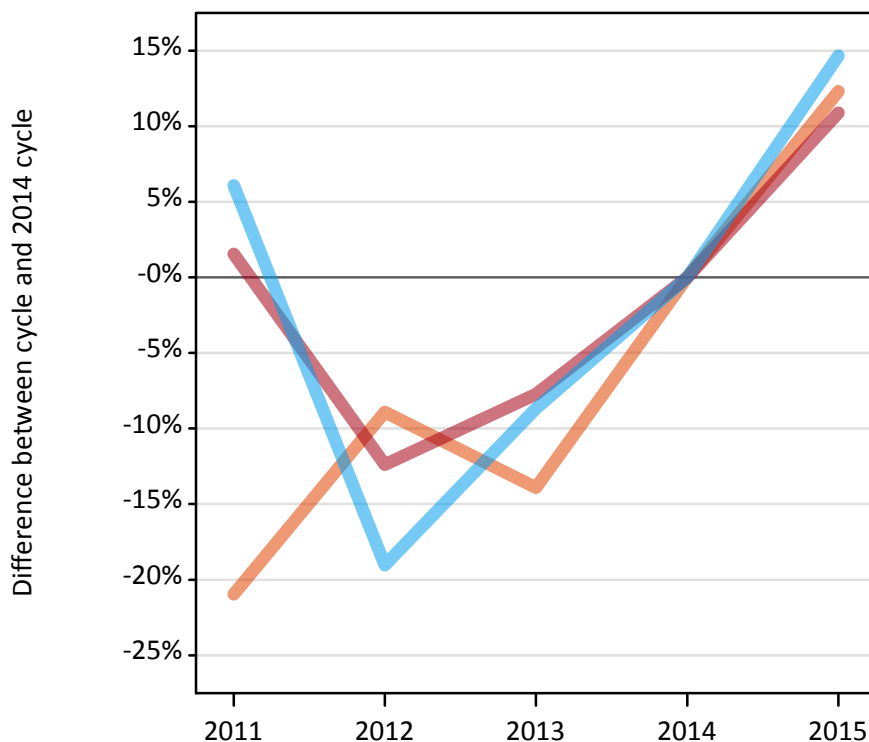
All placed applicants: difference between cycle and 2014 cycle

Applicant type	Status	2011	2012	2013	2014	2015
All applicants	Placed	1%	-12%	-8%	0%	11%

AX.6 Placed main scheme applicants from the EU - excluding UK: 14 days after A level results day

Selected placed routes: difference between cycle and 2014 cycle

- Placed (Clearing)
- Placed (Firm)
- Placed (Insurance)



AX.7 Placed main scheme applicants from the EU - excluding UK: 14 days after A level results day

All Main scheme placed routes (excluding Adjustment): applicants at 14 days after A level results day

Applicant type	Status	2011	2012	2013	2014	2015
Main scheme	Placed (Clearing)	890	1,020	970	1,120	1,260
	Placed (Firm)	20,800	17,940	18,900	20,480	22,710
	Placed (Insurance)	1,920	1,460	1,650	1,810	2,070
	Placed (Other)	1,280	940	1,070	1,050	1,090

AX.8 Placed main scheme applicants from the EU - excluding UK: 14 days after A level results day

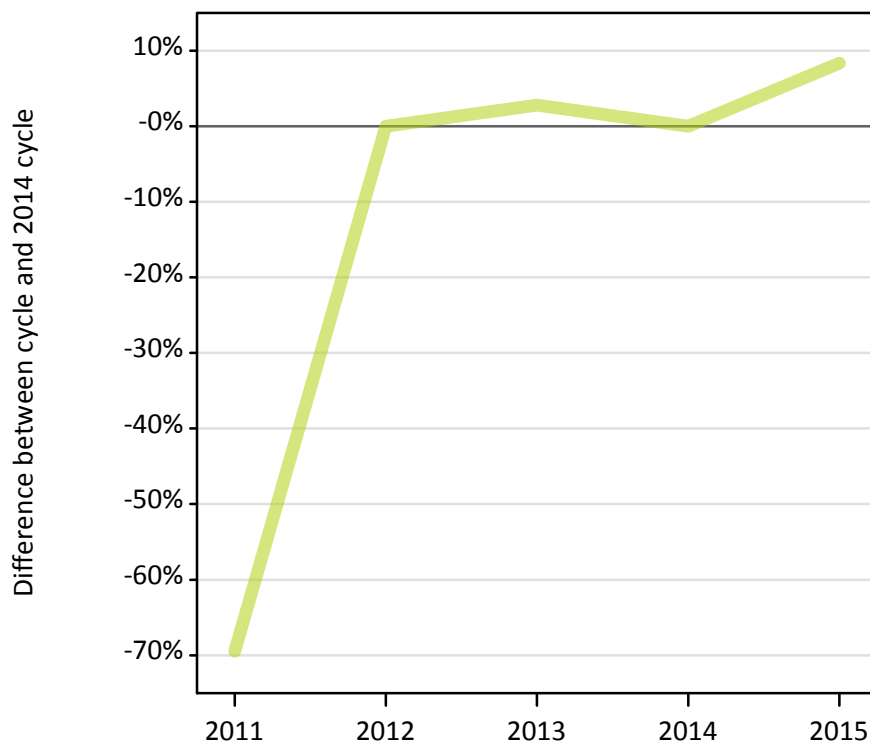
Selected placed routes: difference between cycle and 2014 cycle

Applicant type	Status	2011	2012	2013	2014	2015
Main scheme	Placed (Clearing)	-21%	-9%	-14%	0%	12%
	Placed (Firm)	2%	-12%	-8%	0%	11%
	Placed (Insurance)	6%	-19%	-9%	0%	15%

AX.9 Main scheme applicants placed through adjustment: 14 days after A level results day

Placed through adjustment: difference between cycle and 2014 cycle

Placed (Adjustment)



AX.10 Main scheme applicants placed through adjustment: 14 days after A level results day

Placed through adjustment: applicants at 14 days after A level results day

Applicant type	Status	2011	2012	2013	2014	2015
Main scheme	Placed (Adjustment)	10	40	40	40	40

AX.11 Main scheme applicants placed through adjustment: 14 days after A level results day

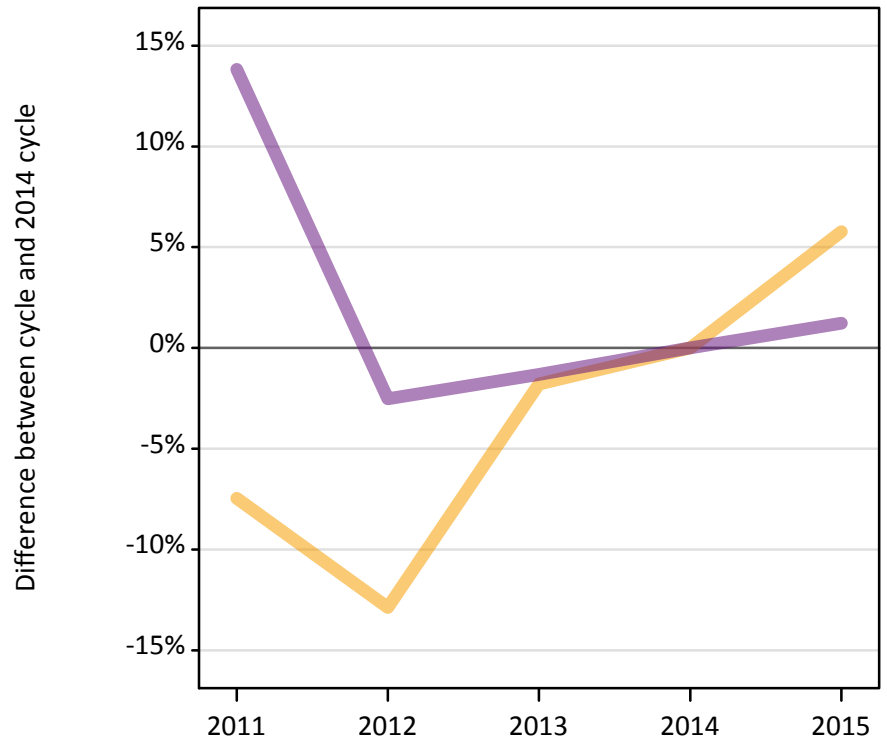
Placed through adjustment: difference between cycle and 2014 cycle

Applicant type	Status	2011	2012	2013	2014	2015
Main scheme	Placed (Adjustment)	-69%	0%	3%	0%	8%

AX.12 Main scheme applicants not currently placed from the EU - excluding UK: 14 days after A level results day

Applicants in unplaced states: difference between cycle and 2014 cycle

— Holding offer
— Free to be placed in Clearing



AX.13 Main scheme applicants not currently placed from the EU - excluding UK: 14 days after A level results day

Applicants in unplaced states: applicants at 14 days after A level results day

Applicant type	Status	2011	2012	2013	2014	2015
Main scheme	Holding offer	4,800	4,520	5,090	5,190	5,480
	Free to be placed in Clearing	16,400	14,040	14,220	14,410	14,580

AX.14 Main scheme applicants not currently placed from the EU - excluding UK: 14 days after A level results day

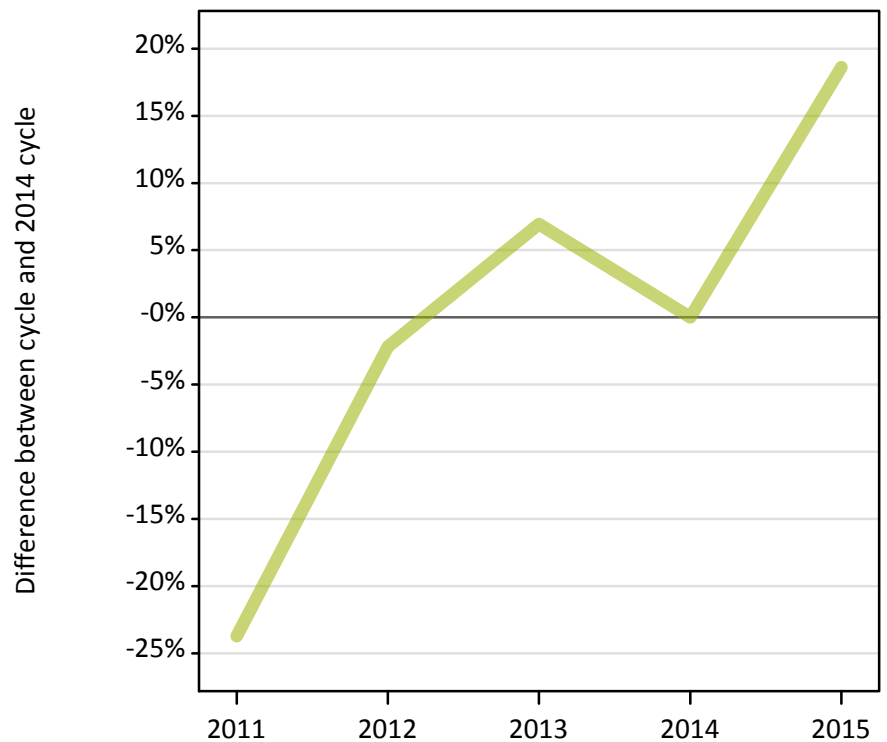
Applicants in unplaced states: difference between cycle and 2014 cycle

Applicant type	Status	2011	2012	2013	2014	2015
Main scheme	Holding offer	-7%	-13%	-2%	0%	6%
	Free to be placed in Clearing	14%	-3%	-1%	0%	1%

AX.15 Direct to Clearing applicants from the EU - excluding UK: 14 days after A level results day

Placed (Direct to Clearing): difference between cycle and 2014 cycle

Placed (Direct to Clearing)

**AX.16 Direct to Clearing applicants from the EU - excluding UK: 14 days after A level results day**

Direct to Clearing 14 days after A level results day

Applicant type	Status	2011	2012	2013	2014	2015
Direct to Clearing	Placed (Direct to Clearing)	210	270	290	270	330
	Other (Direct to Clearing)	510	370	360	370	380

AX.17 Direct to Clearing applicants from the EU - excluding UK: 14 days after A level results day

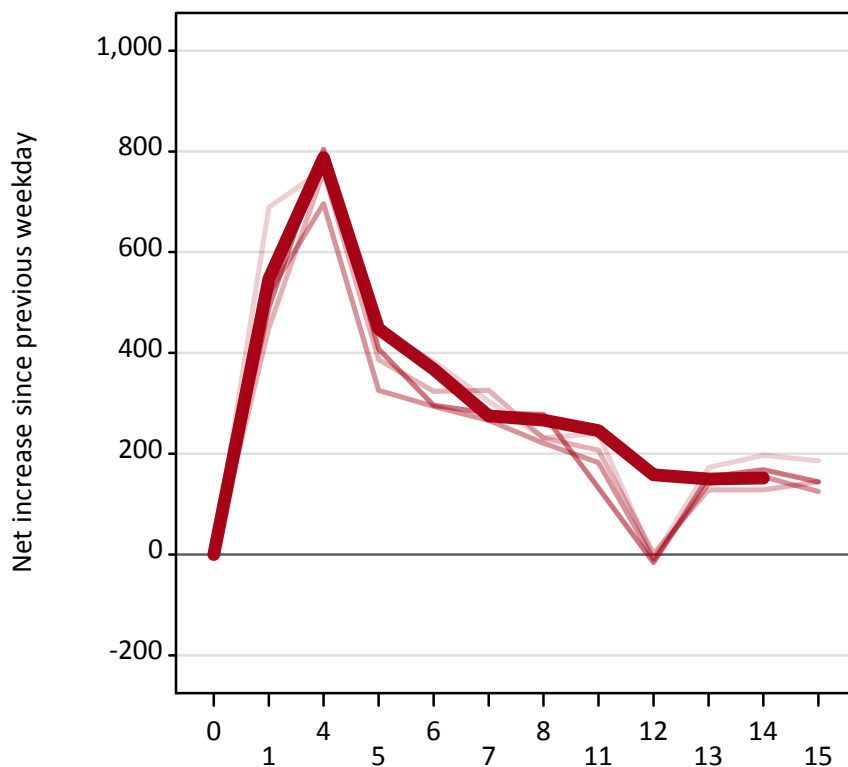
Placed (Direct to Clearing): difference between cycle and 2014 cycle

Applicant type	Status	2011	2012	2013	2014	2015
Direct to Clearing	Placed (Direct to Clearing)	-24%	-2%	7%	0%	19%

AX.18 All Placed: Daily net change (from the EU - excluding UK)

Net increase since previous weekday (2015 cycle up to 14 days after A level results day)

- 2011
- 2012
- 2013
- 2014
- 2015



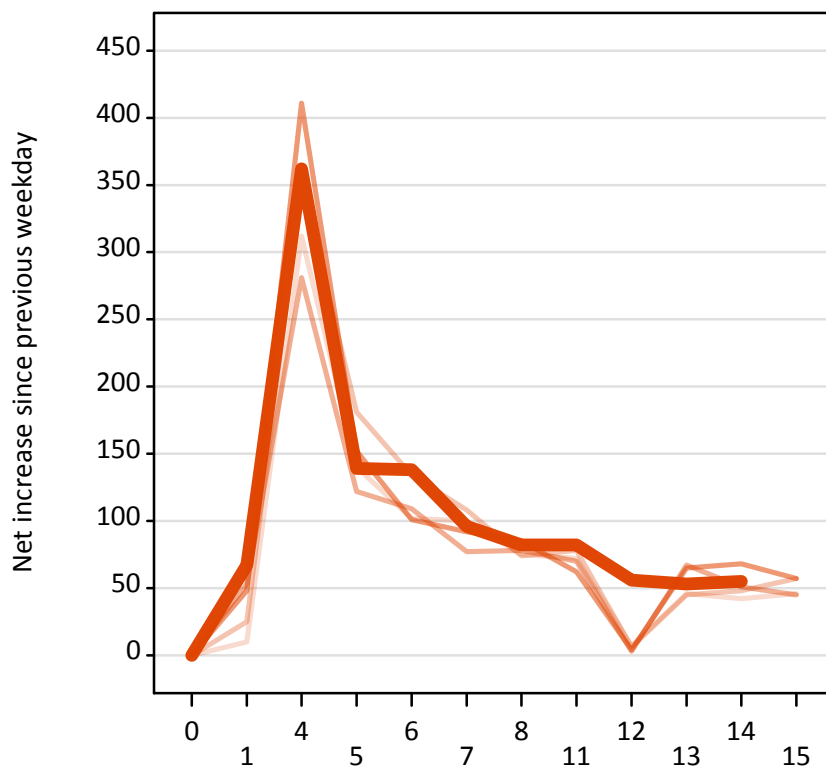
AX.19 All Placed: Daily net change (from the EU - excluding UK)

Net increase since previous weekday (2015 cycle up to 14 days after A level results day)

Applicant status, days since A level results day		2011	2012	2013	2014	2015
All Placed	0	0	0	0	0	0
	1	690	450	520	490	550
	4	760	760	700	800	790
	5	450	390	330	410	450
	6	380	320	290	300	370
	7	300	330	270	280	280
	8	230	230	220	280	270
	11	240	210	180	130	250
	12	-10	0	-10	-20	160
	13	170	130	140	150	150
	14	200	130	150	170	150
	15	190	140	130	140	

AX.20 Placed through Clearing only: Daily net change (from the EU - excluding UK)
 Net increase since previous weekday (2015 cycle up to 14 days after A level results day)

- 2011
- 2012
- 2013
- 2014
- 2015



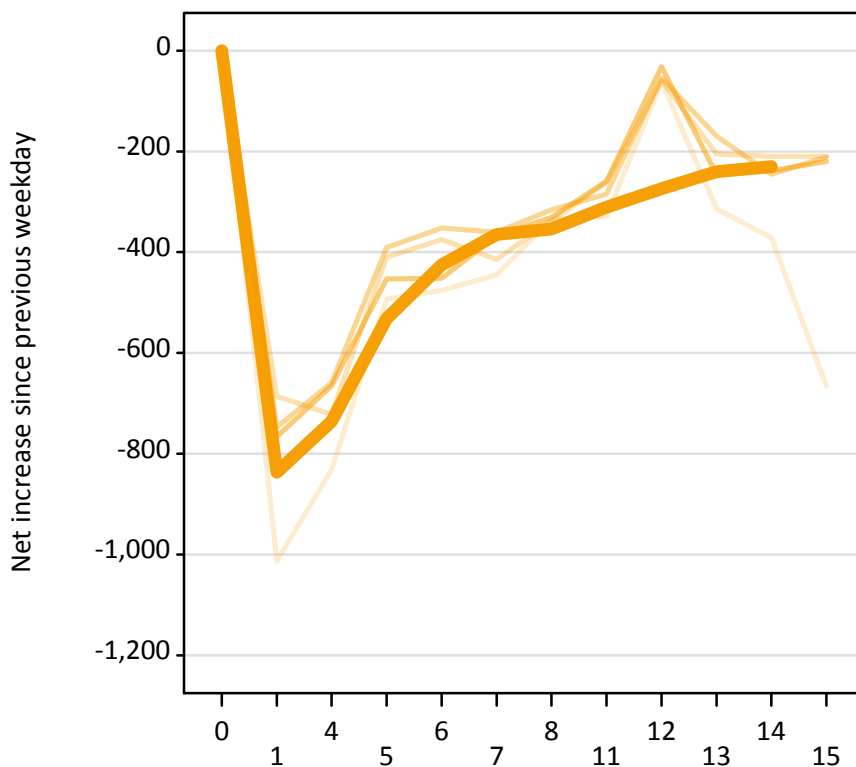
AX.21 Placed through Clearing only: Daily net change (from the EU - excluding UK)
 Net increase since previous weekday (2015 cycle up to 14 days after A level results day)

Applicant status, days since A level results day		2011	2012	2013	2014	2015
Placed through Clearing only	0	0	0	0	0	0
	1	10	30	50	50	70
	4	310	350	280	410	360
	5	140	180	120	150	140
	6	100	130	110	100	140
	7	100	110	80	90	100
	8	80	70	80	90	80
	11	70	80	70	60	80
	12	10	10	0	0	60
	13	50	50	70	70	50
	14	40	50	50	70	60
	15	50	60	50	60	

AX.22 Holding Offer: Daily net change (from the EU - excluding UK)

Net increase since previous weekday (2015 cycle up to 14 days after A level results day)

- 2011
- 2012
- 2013
- 2014
- 2015



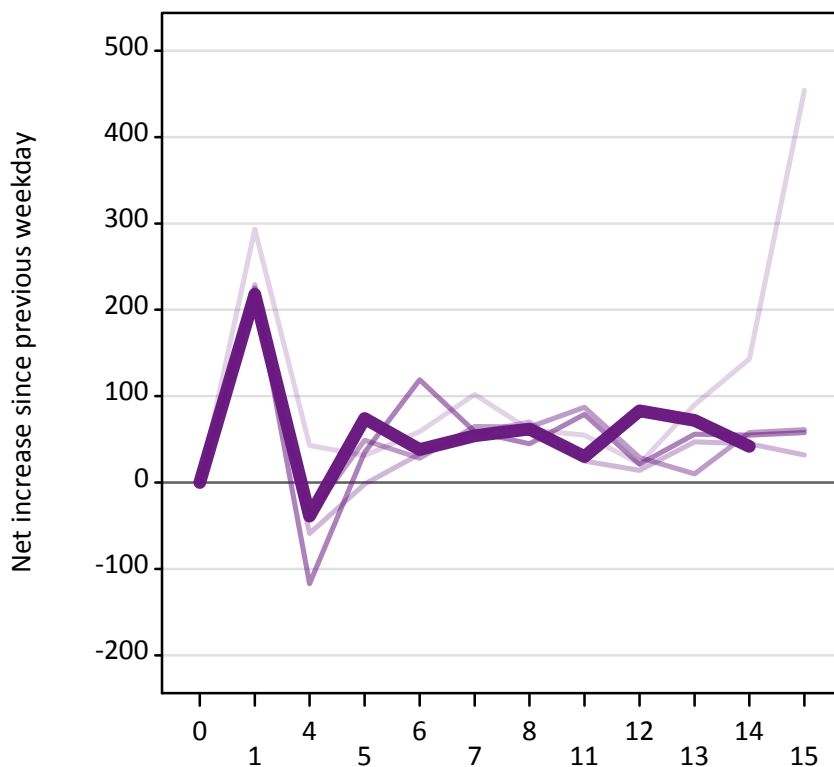
AX.23 Holding Offer: Daily net change (from the EU - excluding UK)

Net increase since previous weekday (2015 cycle up to 14 days after A level results day)

Applicant status, days since A level results day		2011	2012	2013	2014	2015
Holding Offer	0	0	0	0	0	0
	1	-1,010	-690	-750	-770	-840
	4	-830	-720	-660	-670	-740
	5	-490	-410	-390	-450	-530
	6	-480	-380	-350	-450	-430
	7	-450	-410	-360	-370	-370
	8	-330	-340	-320	-330	-350
	11	-330	-260	-290	-260	-310
	12	-60	-60	-50	-30	-270
	13	-310	-210	-170	-250	-240
	14	-370	-210	-250	-240	-230
	15	-670	-210	-210	-220	-230

AX.24 Free to be placed in Clearing: Daily net change (from the EU - excluding UK)

Net increase since previous weekday (2015 cycle up to 14 days after A level results day)



AX.25 Free to be placed in Clearing: Daily net change (from the EU - excluding UK)

Net increase since previous weekday (2015 cycle up to 14 days after A level results day)

Applicant status, days since A level results day		2011	2012	2013	2014	2015
Free to be placed in Clearing	0	0	0	0	0	0
	1	290	230	210	230	220
	4	40	-60	-40	-120	-40
	5	30	0	50	40	70
	6	60	30	30	120	40
	7	100	60	70	60	50
	8	60	70	60	50	60
	11	60	30	90	80	30
	12	20	10	30	20	80
	13	90	50	10	60	70
	14	140	50	60	60	40
	15	450	30	60	60	