

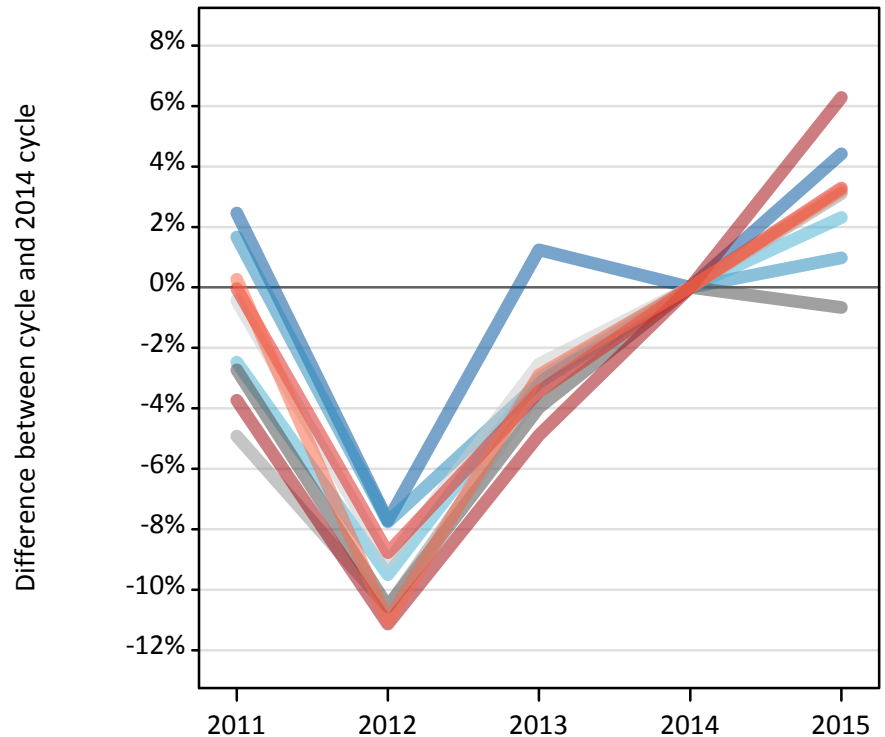
Daily Clearing Analysis: Region

Analysis at 00:05 on Wednesday 26 August 2015 (13 days after A level results day - No Scot.X1)

RX.1 Placed applicants by region of domicile: 13 days after A level results day

Placed applicants: change relative to 2014 cycle totals

- North East
- North West
- Yorkshire and The Humber
- East Midlands
- West Midlands
- East of England
- London
- South East
- South West



RX.2 Placed applicants by region of domicile: 13 days after A level results day

Applicant Status	Domicile	2011	2012	2013	2014	2015
Placed	North East	15,540	14,000	15,350	15,170	15,840
	North West	48,580	44,080	46,280	47,780	48,250
	Yorkshire and The Humber	31,880	29,580	31,710	32,690	33,450
	East Midlands	26,930	24,760	26,580	27,680	27,500
	West Midlands	35,830	33,700	36,390	37,680	38,860
	East of England	36,250	33,100	35,480	36,410	37,550
	London	63,040	58,190	62,280	65,480	69,600
	South East	56,700	51,750	54,770	56,730	58,590
	South West	32,540	28,870	31,510	32,450	33,500
	(England total)	347,290	318,030	340,360	352,070	363,110
	Scotland	27,330	27,350	27,910	28,620	29,500
	Northern Ireland	13,520	12,710	14,090	14,110	13,780
	Wales	17,120	17,720	17,880	18,660	19,120
	UK	405,250	375,810	400,230	413,460	425,510

RX.3 Placed applicants by region of domicile: 13 days after A level results day

Placed applicants: change relative to 2014 cycle totals

Applicant Status	Domicile	2011	2012	2013	2014	2015
Placed	North East	2%	-8%	1%	0%	4%
	North West	2%	-8%	-3%	0%	1%
	Yorkshire and The Humber	-2%	-10%	-3%	0%	2%
	East Midlands	-3%	-11%	-4%	0%	-1%
	West Midlands	-5%	-11%	-3%	0%	3%
	East of England	-0%	-9%	-3%	0%	3%
	London	-4%	-11%	-5%	0%	6%
	South East	-0%	-9%	-3%	0%	3%
	South West	0%	-11%	-3%	0%	3%
	(England total)	-1%	-10%	-3%	0%	3%
	Scotland	-5%	-4%	-3%	0%	3%
	Northern Ireland	-4%	-10%	-0%	0%	-2%
	Wales	-8%	-5%	-4%	0%	2%
	UK	-2%	-9%	-3%	0%	3%

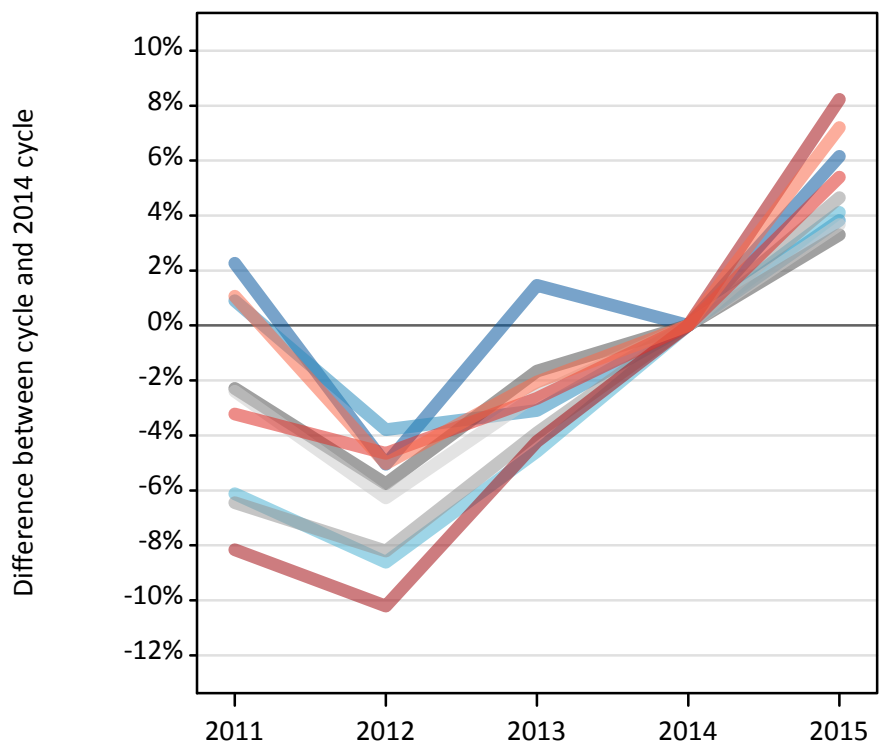
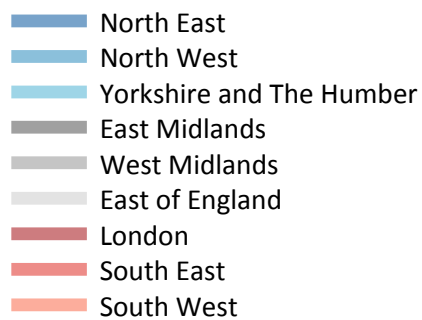
RX.4 Placed applicants by region of domicile: 13 days after A level results day

Placed applicants: absolute change relative to 2014 cycle totals

Applicant Status	Domicile	2011	2012	2013	2014	2015
Placed	North East	370	-1,170	190	0	670
	North West	800	-3,710	-1,510	0	470
	Yorkshire and The Humber	-810	-3,110	-980	0	760
	East Midlands	-760	-2,920	-1,100	0	-180
	West Midlands	-1,850	-3,980	-1,290	0	1,170
	East of England	-160	-3,310	-930	0	1,140
	London	-2,450	-7,290	-3,200	0	4,110
	South East	-20	-4,980	-1,950	0	1,860
	South West	90	-3,580	-940	0	1,040
	(England total)	-4,780	-34,040	-11,710	0	11,040
	Scotland	-1,300	-1,270	-720	0	870
	Northern Ireland	-590	-1,400	-20	0	-330
	Wales	-1,530	-940	-780	0	460
	UK	-8,210	-37,650	-13,230	0	12,050

RX.5 Placed 18 year old applicants by region of domicile: 13 days after A level results day

Placed 18 year old applicants: change relative to 2014 cycle totals



RX.6 Placed 18 year old applicants by region of domicile: 13 days after A level results day

Applicant Status	Domicile	2011	2012	2013	2014	2015
Placed	North East	8,140	7,550	8,070	7,960	8,450
	North West	26,430	25,200	25,380	26,190	27,190
	Yorkshire and The Humber	16,960	16,510	17,240	18,060	18,810
	East Midlands	14,720	14,200	14,810	15,060	15,560
	West Midlands	18,950	18,590	19,460	20,250	21,200
	East of England	20,910	20,080	20,880	21,420	22,210
	London	29,990	29,320	31,270	32,650	35,340
	South East	31,080	30,620	31,260	32,120	33,850
	South West	16,430	15,440	15,930	16,260	17,430
	(England total)	183,600	177,500	184,300	189,970	200,030
	Scotland	13,570	13,650	13,730	13,940	14,020
	Northern Ireland	8,570	8,190	8,700	8,500	8,410
	Wales	9,410	9,700	9,630	10,030	10,500
	UK	215,140	209,050	216,370	222,440	232,950

RX.7 Placed 18 year old applicants by region of domicile: 13 days after A level results day

Placed 18 year old applicants: change relative to 2014 cycle totals

Applicant Status	Domicile	2011	2012	2013	2014	2015
Placed	North East	2%	-5%	1%	0%	6%
	North West	1%	-4%	-3%	0%	4%
	Yorkshire and The Humber	-6%	-9%	-5%	0%	4%
	East Midlands	-2%	-6%	-2%	0%	3%
	West Midlands	-6%	-8%	-4%	0%	5%
	East of England	-2%	-6%	-3%	0%	4%
	London	-8%	-10%	-4%	0%	8%
	South East	-3%	-5%	-3%	0%	5%
	South West	1%	-5%	-2%	0%	7%
	(England total)	-3%	-7%	-3%	0%	5%
	Scotland	-3%	-2%	-1%	0%	1%
	Northern Ireland	1%	-4%	2%	0%	-1%
	Wales	-6%	-3%	-4%	0%	5%
	UK	-3%	-6%	-3%	0%	5%

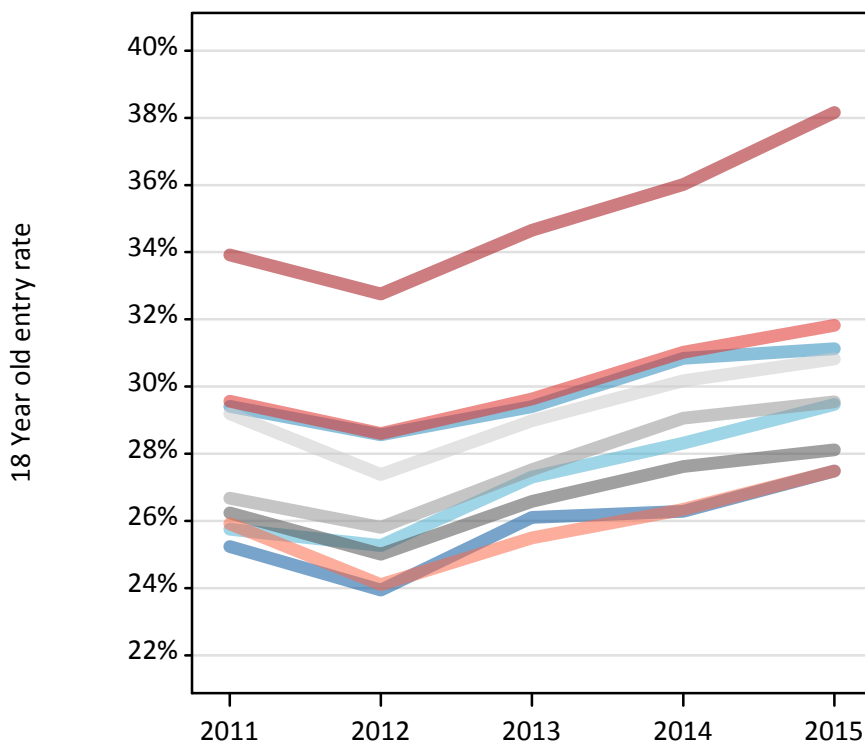
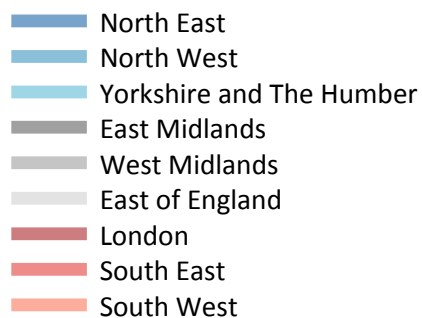
RX.8 Placed 18 year old applicants by region of domicile: 13 days after A level results day

Placed 18 year old applicants: absolute change relative to 2014 cycle totals

Applicant Status	Domicile	2011	2012	2013	2014	2015
Placed	North East	180	-400	120	0	490
	North West	240	-990	-810	0	1,000
	Yorkshire and The Humber	-1,110	-1,560	-830	0	740
	East Midlands	-350	-870	-250	0	500
	West Midlands	-1,310	-1,660	-790	0	940
	East of England	-510	-1,340	-540	0	790
	London	-2,660	-3,330	-1,380	0	2,690
	South East	-1,030	-1,490	-850	0	1,730
	South West	170	-820	-330	0	1,170
	(England total)	-6,380	-12,470	-5,670	0	10,050
	Scotland	-360	-280	-200	0	80
	Northern Ireland	60	-310	200	0	-90
	Wales	-620	-330	-390	0	470
	UK	-7,300	-13,390	-6,070	0	10,510

RX.9 Placed 18 year old applicants by region of domicile: 13 days after A level results day

Placed 18 year old applicants: entry rate



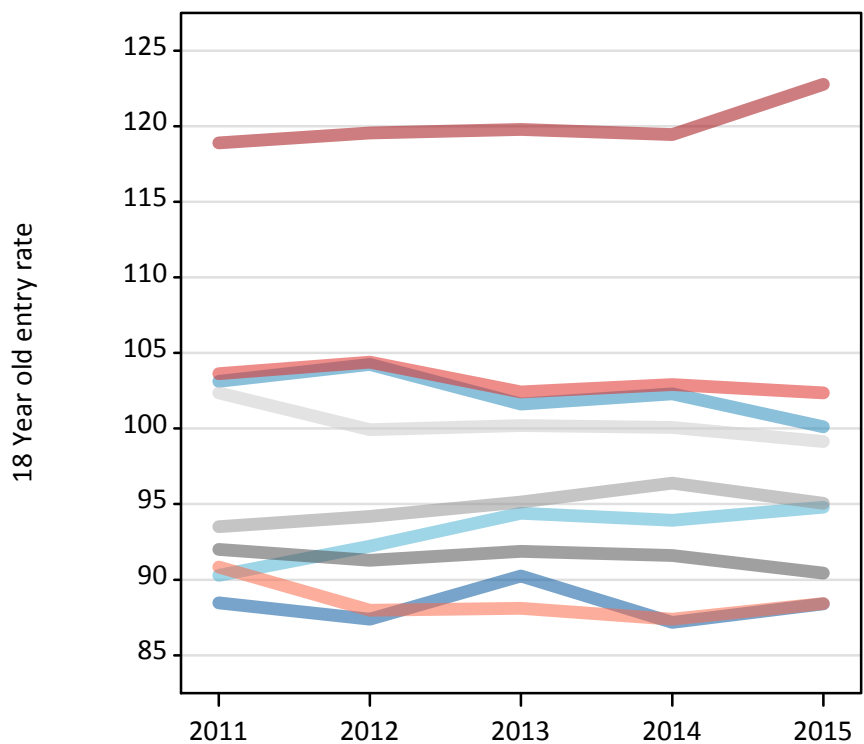
RX.10 Placed 18 year old applicants by region of domicile: 13 days after A level results day

Placed 18 year old applicants: entry rate

Applicant Status	Domicile	2011	2012	2013	2014	2015
Placed	North East	25.2%	23.9%	26.1%	26.3%	27.5%
	North West	29.4%	28.6%	29.4%	30.8%	31.1%
	Yorkshire and The Humber	25.8%	25.3%	27.3%	28.3%	29.5%
	East Midlands	26.2%	25.0%	26.6%	27.6%	28.1%
	West Midlands	26.7%	25.8%	27.5%	29.1%	29.5%
	East of England	29.2%	27.4%	29.0%	30.2%	30.8%
	London	33.9%	32.8%	34.7%	36.0%	38.2%
	South East	29.6%	28.6%	29.6%	31.0%	31.8%
	South West	25.9%	24.1%	25.5%	26.3%	27.5%
	(England total)	28.5%	27.4%	28.9%	30.1%	31.1%
	Scotland	21.6%	22.0%	22.3%	22.7%	23.3%
	Northern Ireland	34.3%	32.6%	35.5%	35.0%	33.9%
	Wales	24.4%	25.1%	25.5%	26.7%	27.9%
	UK	27.9%	27.0%	28.4%	29.5%	30.4%

RX.11 Placed 18 year old applicants by region of domicile: 13 days after A level results day

Placed 18 year old applicants: entry rates (indexed to 100 = England)



RX.12 Placed 18 year old applicants by region of domicile: 13 days after A level results day

Placed 18 year old applicants: entry rate (indexed to 100 = England)

Applicant Status	Domicile	2011	2012	2013	2014	2015
Placed	North East	88	87	90	87	88
	North West	103	104	102	102	100
	Yorkshire and The Humber	90	92	94	94	95
	East Midlands	92	91	92	92	90
	West Midlands	94	94	95	96	95
	East of England	102	100	100	100	99
	London	119	120	120	119	123
	South East	104	104	102	103	102
	South West	91	88	88	87	88
	(England total)	100	100	100	100	100