

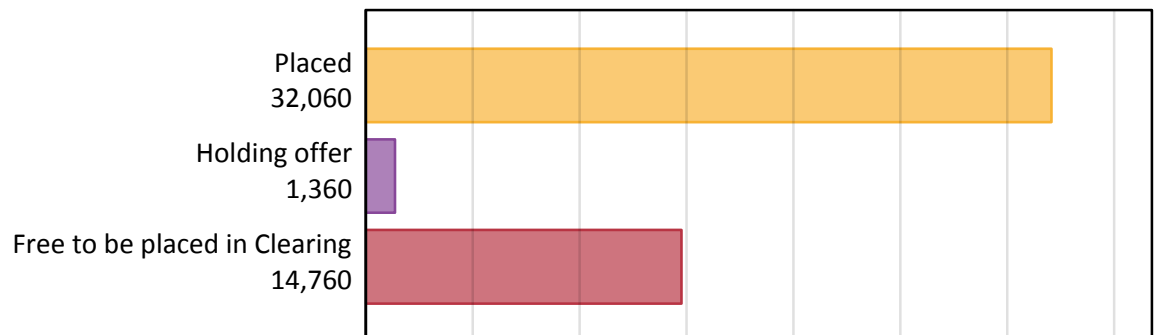
Daily Clearing Analysis: Overview

Analysis at 00:05 on Wednesday 26 August 2015 (13 days after A level results day)

A.1 Applicants by type and status from Scotland, 2015 cycle

Applicant type	Status	2015
Main scheme	Placed (Clearing)	1,150
	Placed (Adjustment)	10
	Placed (Firm)	28,660
	Placed (Insurance)	1,500
	Placed (Other)	550
	Holding offer	1,360
	Free to be placed in Clearing	14,760
Direct to Clearing	Placed (Direct to Clearing)	200
	Other (Direct to Clearing)	360
All applicants	Placed	32,060

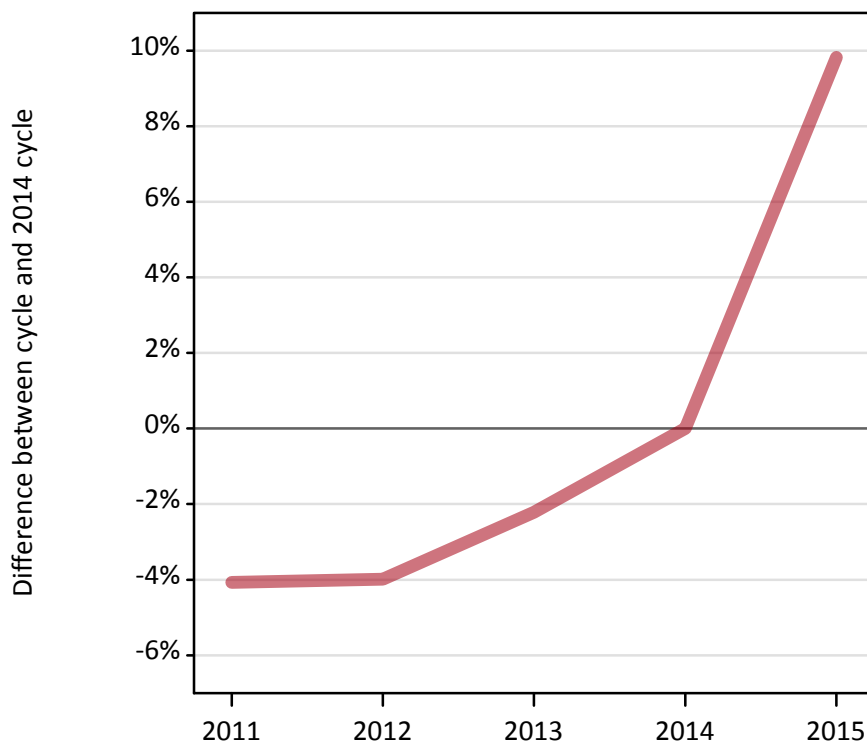
A.2 Summary of applicants who are placed, holding offers or free to be placed in Clearing (Scotland)



A.3 All placed applicants from Scotland: 13 days after A level results day

All placed applicants: difference between cycle and 2014 cycle

Placed



A.4 All placed applicants from Scotland: 13 days after A level results day

All placed applicants: applicants at 13 days after A level results day

Applicant type	Status	2011	2012	2013	2014	2015
All applicants	Placed	28,000	28,030	28,550	29,190	32,060

A.5 All placed applicants from Scotland: 13 days after A level results day

All placed applicants: difference between cycle and 2014 cycle

Applicant type	Status	2011	2012	2013	2014	2015
All applicants	Placed	-4%	-4%	-2%	0%	10%

A.6 Placed main scheme applicants from Scotland: 13 days after A level results day

Selected placed routes: difference between cycle and 2014 cycle

- Placed (Clearing)
- Placed (Firm)
- Placed (Insurance)



A.7 Placed main scheme applicants from Scotland: 13 days after A level results day

All Main scheme placed routes (excluding Adjustment): applicants at 13 days after A level results day

Applicant type	Status	2011	2012	2013	2014	2015
Main scheme	Placed (Clearing)	960	1,150	1,050	910	1,150
	Placed (Firm)	24,600	24,580	25,530	26,220	28,660
	Placed (Insurance)	1,520	1,540	1,330	1,420	1,500
	Placed (Other)	790	610	480	510	550

A.8 Placed main scheme applicants from Scotland: 13 days after A level results day

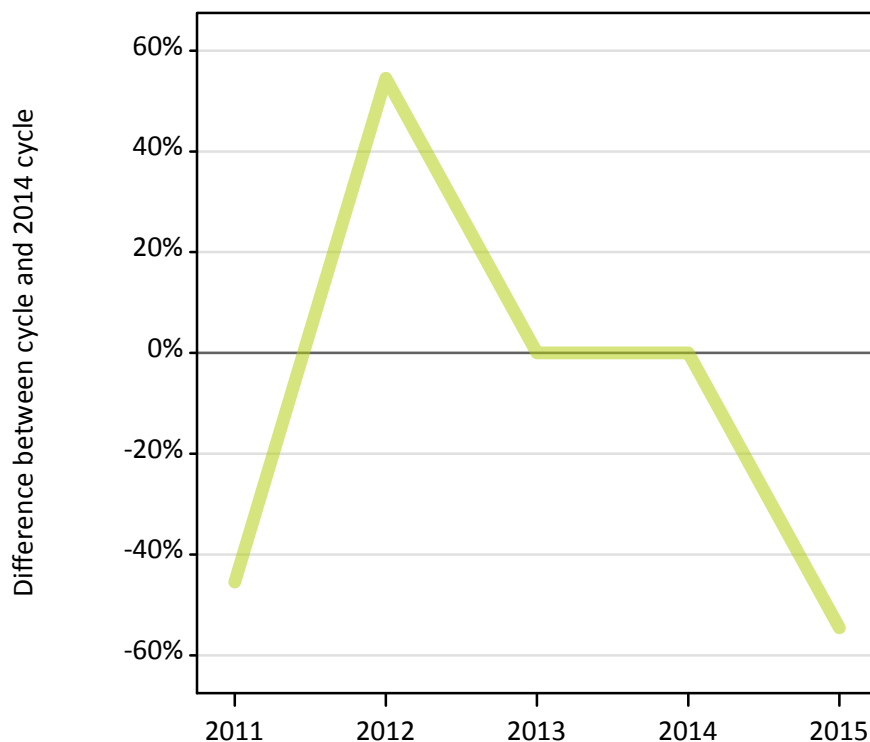
Selected placed routes: difference between cycle and 2014 cycle

Applicant type	Status	2011	2012	2013	2014	2015
Main scheme	Placed (Clearing)	6%	26%	15%	0%	26%
	Placed (Firm)	-6%	-6%	-3%	0%	9%
	Placed (Insurance)	7%	8%	-6%	0%	6%

A.9 Main scheme applicants placed through adjustment: 13 days after A level results day

Placed through adjustment: difference between cycle and 2014 cycle

Placed (Adjustment)



A.10 Main scheme applicants placed through adjustment: 13 days after A level results day

Placed through adjustment: applicants at 13 days after A level results day

Applicant type	Status	2011	2012	2013	2014	2015
Main scheme	Placed (Adjustment)	10	20	10	10	10

A.11 Main scheme applicants placed through adjustment: 13 days after A level results day

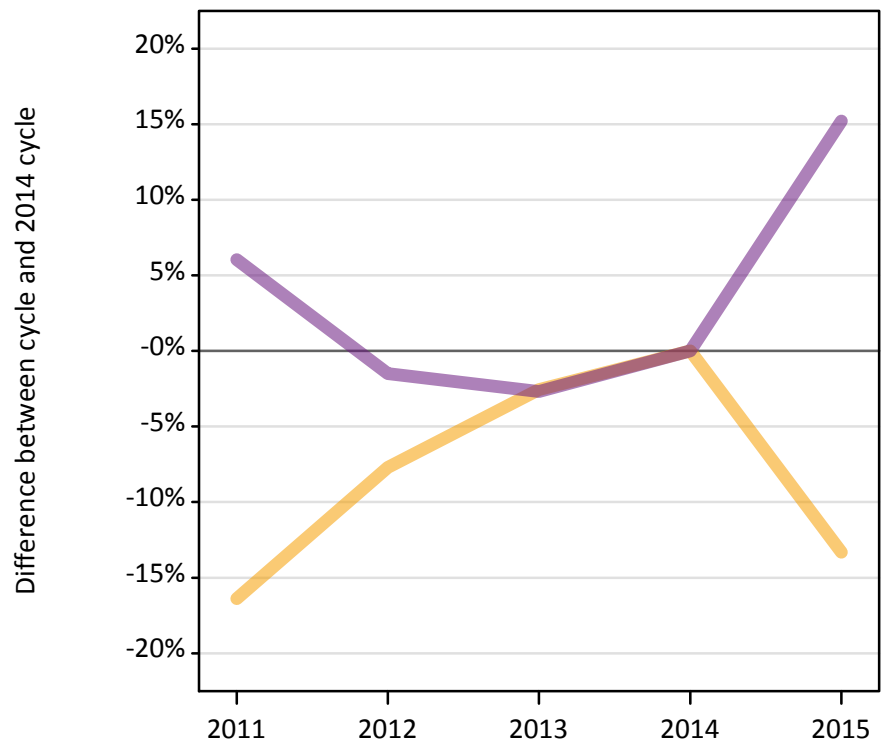
Placed through adjustment: difference between cycle and 2014 cycle

Applicant type	Status	2011	2012	2013	2014	2015
Main scheme	Placed (Adjustment)	-45%	55%	0%	0%	-55%

A.12 Main scheme applicants not currently placed from Scotland: 13 days after A level results day

Applicants in unplaced states: difference between cycle and 2014 cycle

— Holding offer
— Free to be placed in Clearing



A.13 Main scheme applicants not currently placed from Scotland: 13 days after A level results day

Applicants in unplaced states: applicants at 13 days after A level results day

Applicant type	Status	2011	2012	2013	2014	2015
Main scheme	Holding offer	1,310	1,450	1,530	1,570	1,360
	Free to be placed in Clearing	13,590	12,620	12,470	12,820	14,760

A.14 Main scheme applicants not currently placed from Scotland: 13 days after A level results day

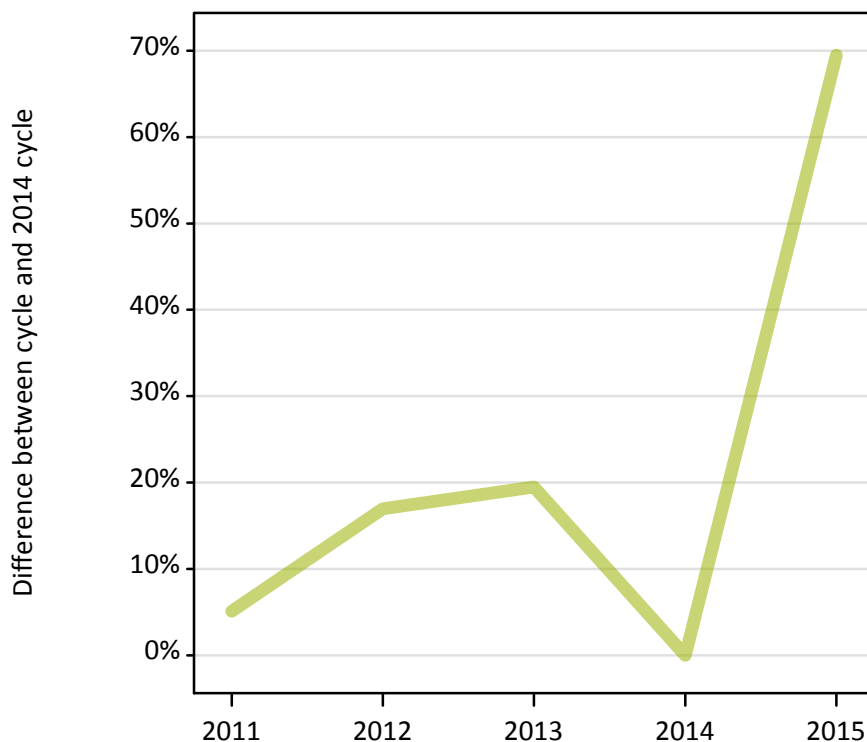
Applicants in unplaced states: difference between cycle and 2014 cycle

Applicant type	Status	2011	2012	2013	2014	2015
Main scheme	Holding offer	-16%	-8%	-3%	0%	-13%
	Free to be placed in Clearing	6%	-1%	-3%	0%	15%

A.15 Direct to Clearing applicants from Scotland: 13 days after A level results day

Placed (Direct to Clearing): difference between cycle and 2014 cycle

Placed (Direct to Clearing)



A.16 Direct to Clearing applicants from Scotland: 13 days after A level results day

Direct to Clearing 13 days after A level results day

Applicant type	Status	2011	2012	2013	2014	2015
Direct to Clearing	Placed (Direct to Clearing)	120	140	140	120	200
	Other (Direct to Clearing)	240	280	280	260	360

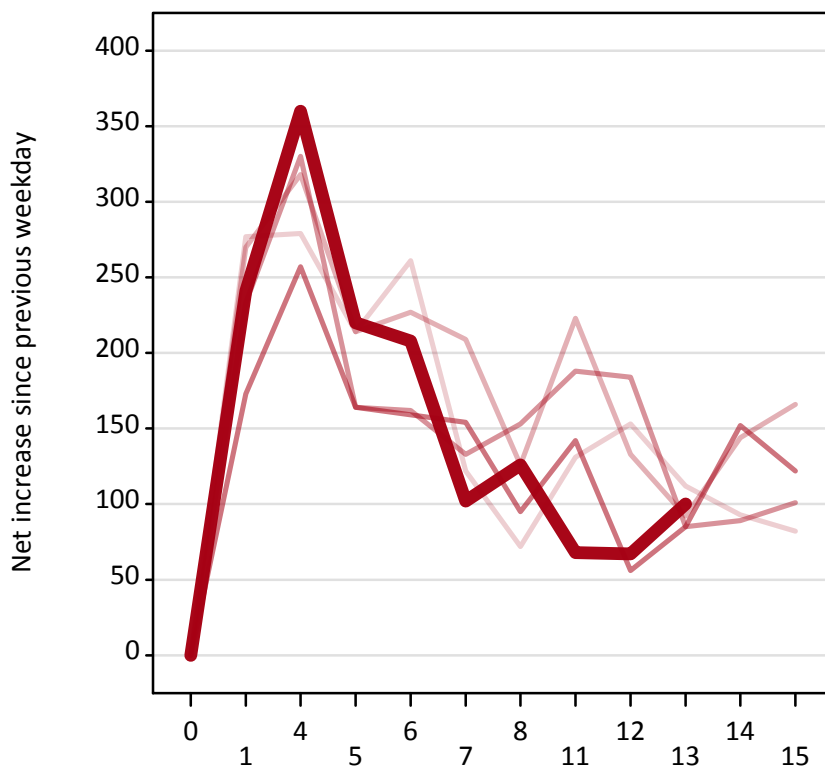
A.17 Direct to Clearing applicants from Scotland: 13 days after A level results day

Placed (Direct to Clearing): difference between cycle and 2014 cycle

Applicant type	Status	2011	2012	2013	2014	2015
Direct to Clearing	Placed (Direct to Clearing)	5%	17%	19%	0%	69%

A.18 All Placed: Daily net change (from Scotland)

Net increase since previous weekday (2015 cycle up to 13 days after A level results day)



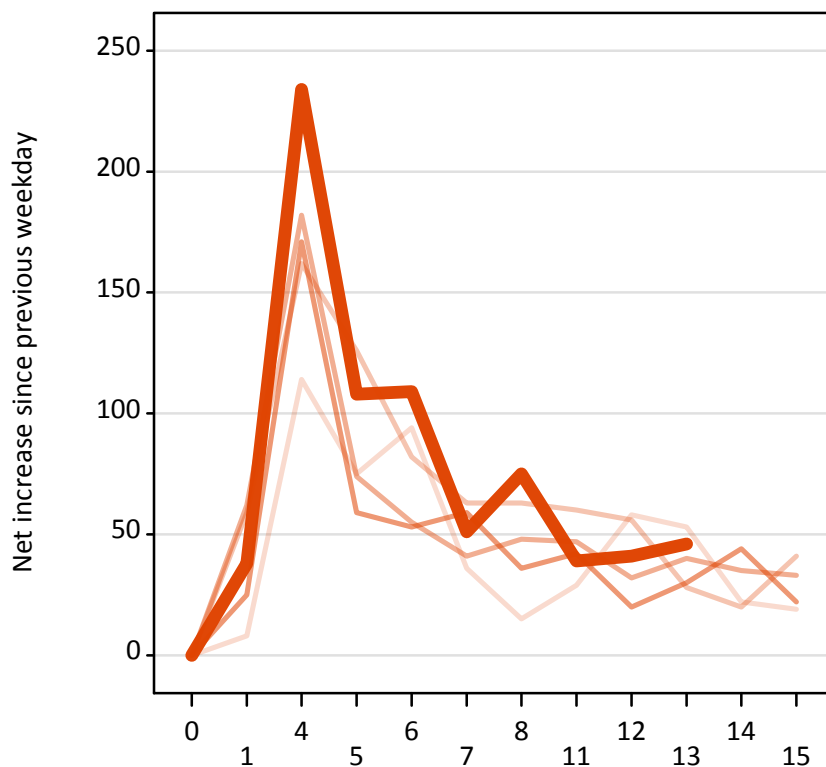
A.19 All Placed: Daily net change (from Scotland)

Net increase since previous weekday (2015 cycle up to 13 days after A level results day)

Applicant status, days since A level results day		2011	2012	2013	2014	2015
All Placed	0	0	0	0	0	0
	1	280	270	230	170	240
	4	280	320	330	260	360
	5	210	210	160	160	220
	6	260	230	160	160	210
	7	120	210	130	150	100
	8	70	130	150	100	130
	11	130	220	190	140	70
	12	150	130	180	60	70
	13	110	90	90	90	100
	14	90	140	90	150	
	15	80	170	100	120	

A.20 Placed through Clearing only: Daily net change (from Scotland)

Net increase since previous weekday (2015 cycle up to 13 days after A level results day)



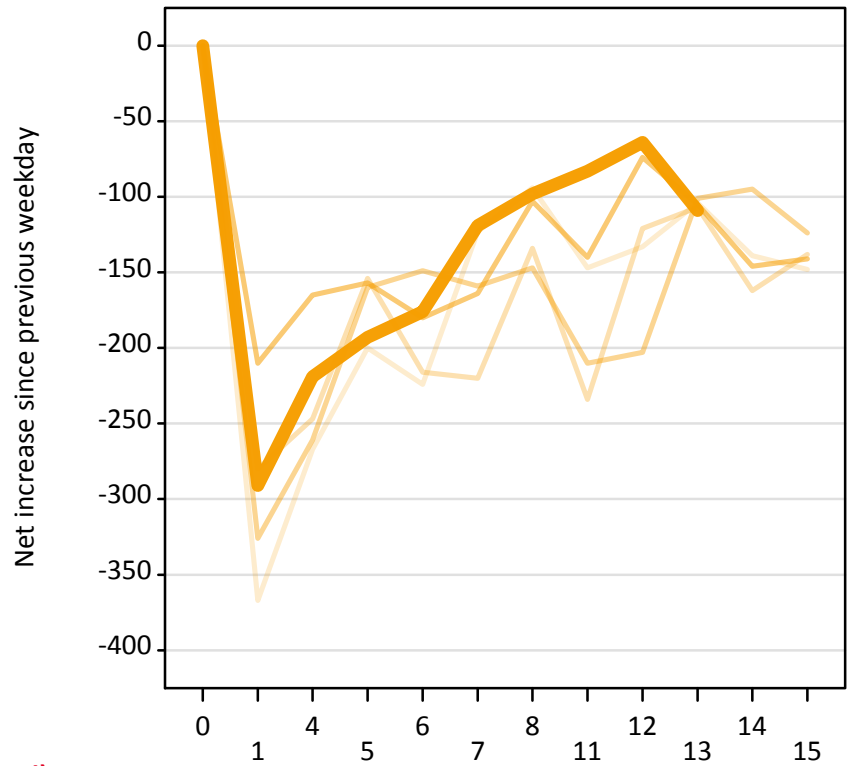
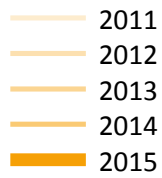
A.21 Placed through Clearing only: Daily net change (from Scotland)

Net increase since previous weekday (2015 cycle up to 13 days after A level results day)

Applicant status, days since A level results day		2011	2012	2013	2014	2015
Placed through Clearing only	0	0	0	0	0	0
	1	10	60	60	30	40
	4	110	160	180	170	230
	5	80	130	70	60	110
	6	90	80	60	50	110
	7	40	60	40	60	50
	8	20	60	50	40	80
	11	30	60	50	40	40
	12	60	60	30	20	40
	13	50	30	40	30	50
	14	20	20	40	40	
	15	20	40	30	20	

A.22 Holding Offer: Daily net change (from Scotland)

Net increase since previous weekday (2015 cycle up to 13 days after A level results day)



A.23 Holding Offer: Daily net change (from Scotland)

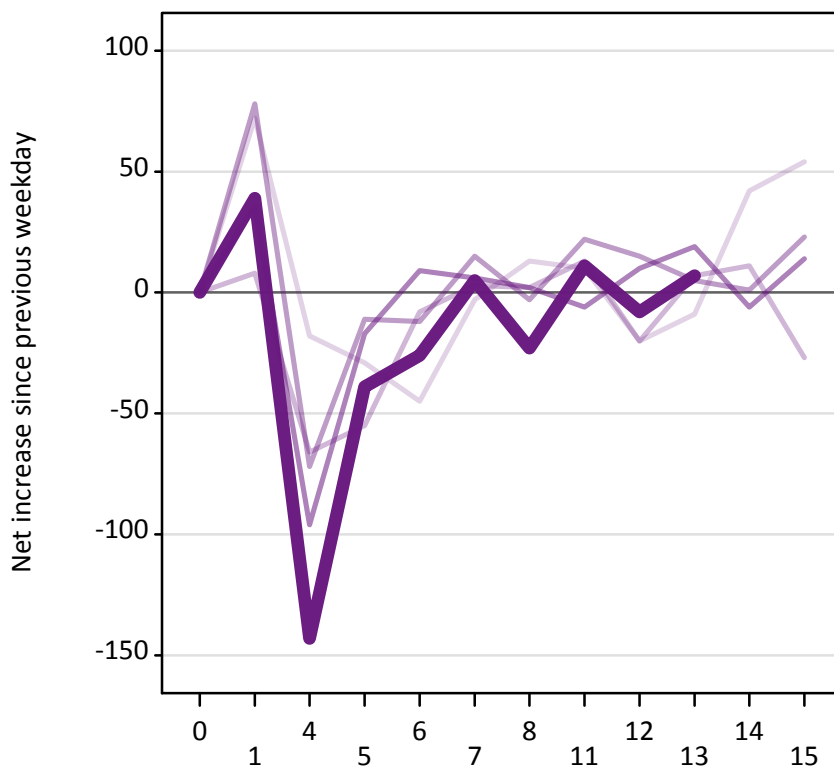
Net increase since previous weekday (2015 cycle up to 13 days after A level results day)

Applicant status, days since A level results day		2011	2012	2013	2014	2015
Holding Offer	0	0	0	0	0	0
	1	-370	-280	-330	-210	-290
	4	-270	-250	-260	-170	-220
	5	-200	-150	-160	-160	-190
	6	-220	-220	-150	-180	-180
	7	-120	-220	-160	-160	-120
	8	-90	-130	-150	-100	-100
	11	-150	-230	-210	-140	-80
	12	-130	-120	-200	-70	-60
	13	-100	-110	-100	-110	-110
	14	-140	-160	-100	-150	
	15	-150	-140	-120	-140	

A.24 Free to be placed in Clearing: Daily net change (from Scotland)

Net increase since previous weekday (2015 cycle up to 13 days after A level results day)

- 2011
- 2012
- 2013
- 2014
- 2015



A.25 Free to be placed in Clearing: Daily net change (from Scotland)

Net increase since previous weekday (2015 cycle up to 13 days after A level results day)

Applicant status, days since A level results day		2011	2012	2013	2014	2015
Free to be placed in Clearing	0	0	0	0	0	0
	1	70	10	80	40	40
	4	-20	-70	-70	-100	-140
	5	-30	-60	-10	-20	-40
	6	-50	-10	-10	10	-30
	7	0	0	20	10	10
	8	10	0	0	0	-20
	11	10	10	20	-10	10
	12	-20	-20	20	10	-10
	13	-10	10	10	20	10
	14	40	10	0	-10	
	15	50	-30	20	10	