

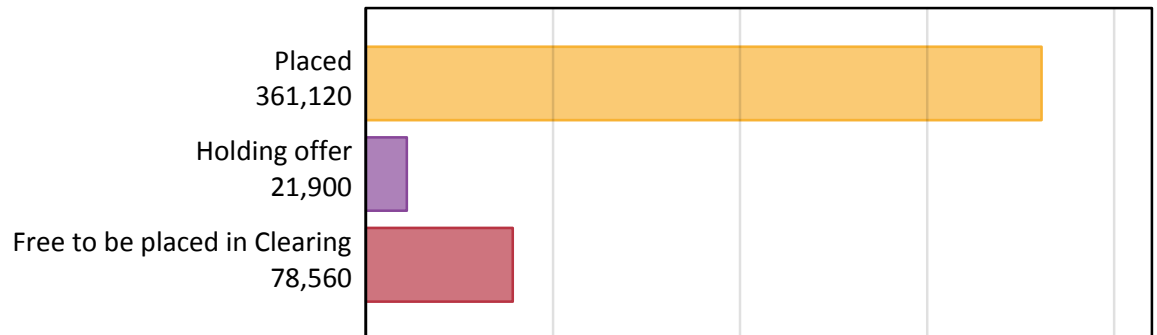
Daily Clearing Analysis: Overview

Analysis at 00:05 on Tuesday 25 August 2015 (12 days after A level results day - No Scot.X1)

AX.1 Applicants by type and status from England, 2015 cycle

Applicant type	Status	2015
Main scheme	Placed (Clearing)	32,350
	Placed (Adjustment)	990
	Placed (Firm)	283,700
	Placed (Insurance)	28,400
	Placed (Other)	9,230
	Holding offer	21,900
	Free to be placed in Clearing	78,560
Direct to Clearing	Placed (Direct to Clearing)	6,460
	Other (Direct to Clearing)	6,280
All applicants	Placed	361,120

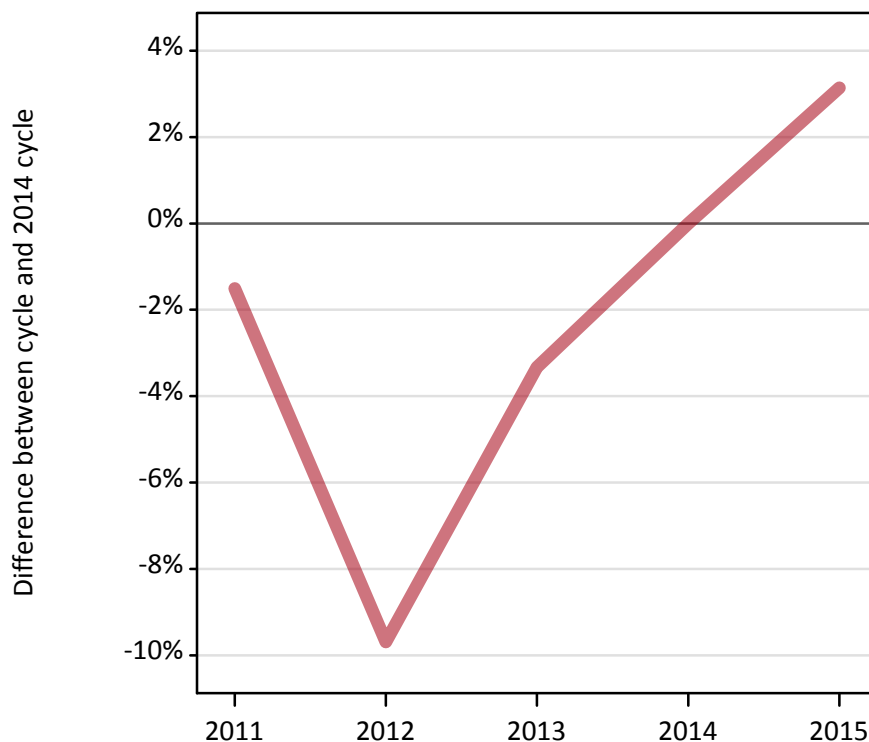
AX.2 Summary of applicants who are placed, holding offers or free to be placed in Clearing (England)



AX.3 All placed applicants from England: 12 days after A level results day

All placed applicants: difference between cycle and 2014 cycle

Placed



AX.4 All placed applicants from England: 12 days after A level results day

All placed applicants: applicants at 12 days after A level results day

Applicant type	Status	2011	2012	2013	2014	2015
All applicants	Placed	344,850	316,210	338,480	350,130	361,120

AX.5 All placed applicants from England: 12 days after A level results day

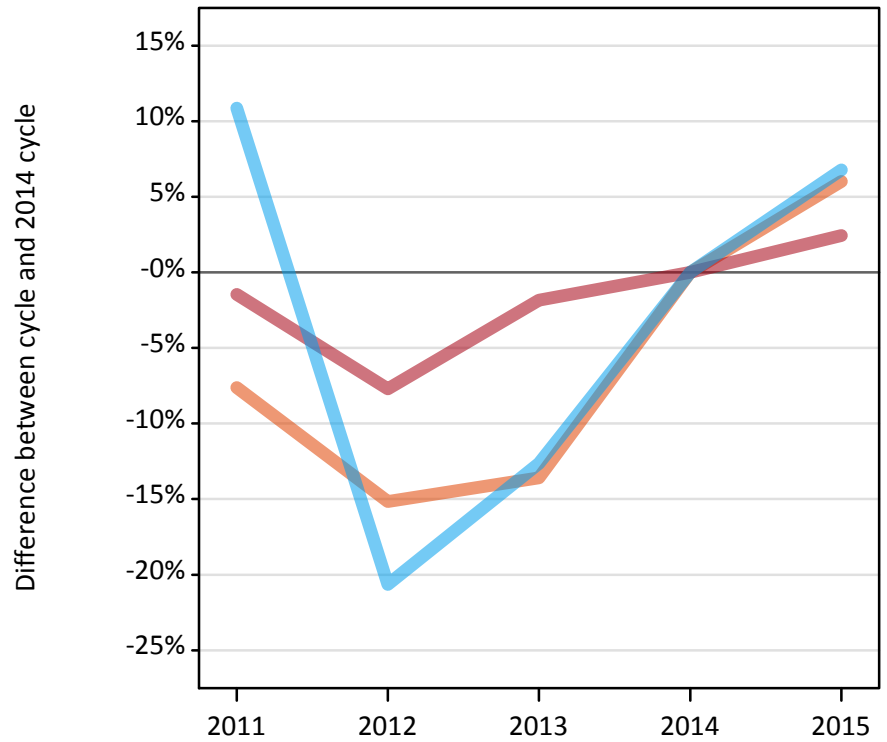
All placed applicants: difference between cycle and 2014 cycle

Applicant type	Status	2011	2012	2013	2014	2015
All applicants	Placed	-2%	-10%	-3%	0%	3%

AX.6 Placed main scheme applicants from England: 12 days after A level results day

Selected placed routes: difference between cycle and 2014 cycle

- Placed (Clearing)
- Placed (Firm)
- Placed (Insurance)



AX.7 Placed main scheme applicants from England: 12 days after A level results day

All Main scheme placed routes (excluding Adjustment): applicants at 12 days after A level results day

Applicant type	Status	2011	2012	2013	2014	2015
Main scheme	Placed (Clearing)	28,190	25,890	26,370	30,510	32,350
	Placed (Firm)	272,890	255,610	271,880	276,950	283,700
	Placed (Insurance)	29,480	21,100	23,230	26,600	28,400
	Placed (Other)	10,000	7,610	9,600	9,490	9,230

AX.8 Placed main scheme applicants from England: 12 days after A level results day

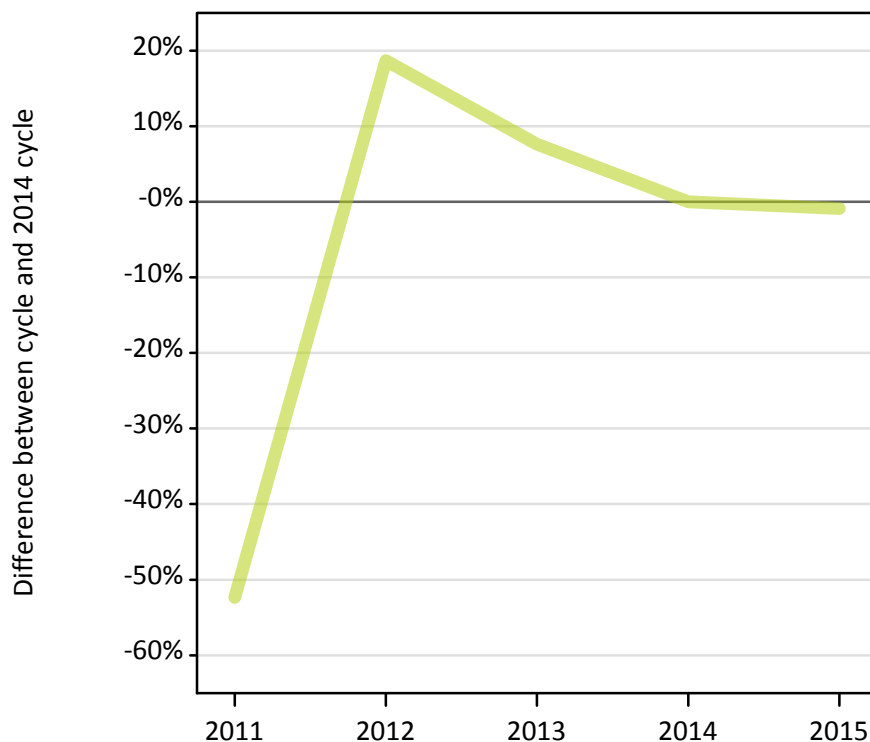
Selected placed routes: difference between cycle and 2014 cycle

Applicant type	Status	2011	2012	2013	2014	2015
Main scheme	Placed (Clearing)	-8%	-15%	-14%	0%	6%
	Placed (Firm)	-1%	-8%	-2%	0%	2%
	Placed (Insurance)	11%	-21%	-13%	0%	7%

AX.9 Main scheme applicants placed through adjustment: 12 days after A level results day

Placed through adjustment: difference between cycle and 2014 cycle

Placed (Adjustment)



AX.10 Main scheme applicants placed through adjustment: 12 days after A level results day

Placed through adjustment: applicants at 12 days after A level results day

Applicant type	Status	2011	2012	2013	2014	2015
Main scheme	Placed (Adjustment)	470	1,180	1,070	1,000	990

AX.11 Main scheme applicants placed through adjustment: 12 days after A level results day

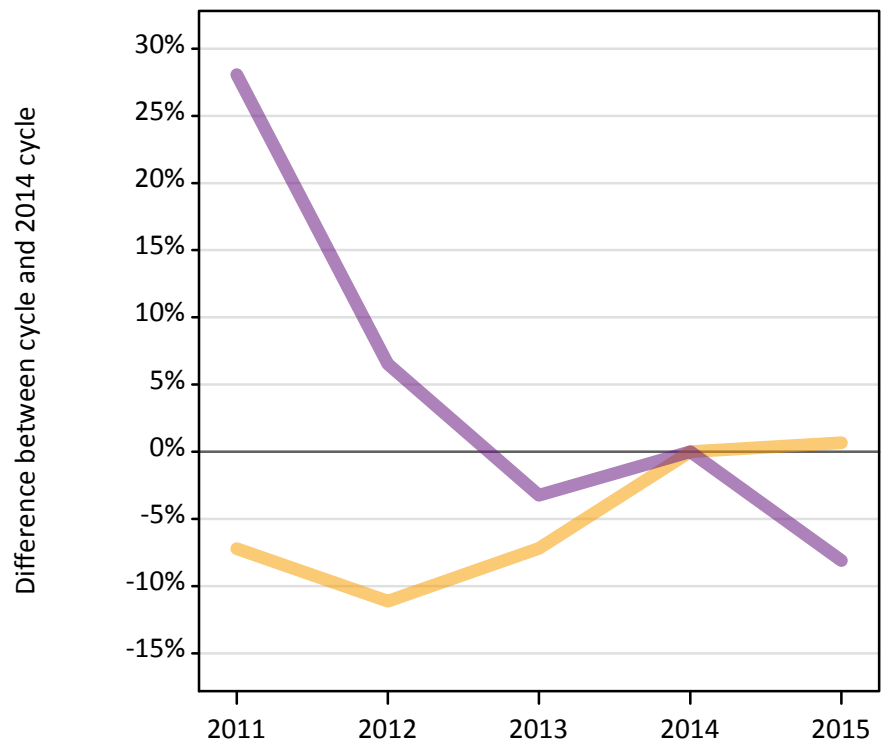
Placed through adjustment: difference between cycle and 2014 cycle

Applicant type	Status	2011	2012	2013	2014	2015
Main scheme	Placed (Adjustment)	-52%	19%	8%	0%	-1%

AX.12 Main scheme applicants not currently placed from England: 12 days after A level results day

Applicants in unplaced states: difference between cycle and 2014 cycle

— Holding offer
— Free to be placed in Clearing



AX.13 Main scheme applicants not currently placed from England: 12 days after A level results day

Applicants in unplaced states: applicants at 12 days after A level results day

Applicant type	Status	2011	2012	2013	2014	2015
Main scheme	Holding offer	20,180	19,330	20,190	21,750	21,900
	Free to be placed in Clearing	109,470	91,060	82,720	85,480	78,560

AX.14 Main scheme applicants not currently placed from England: 12 days after A level results day

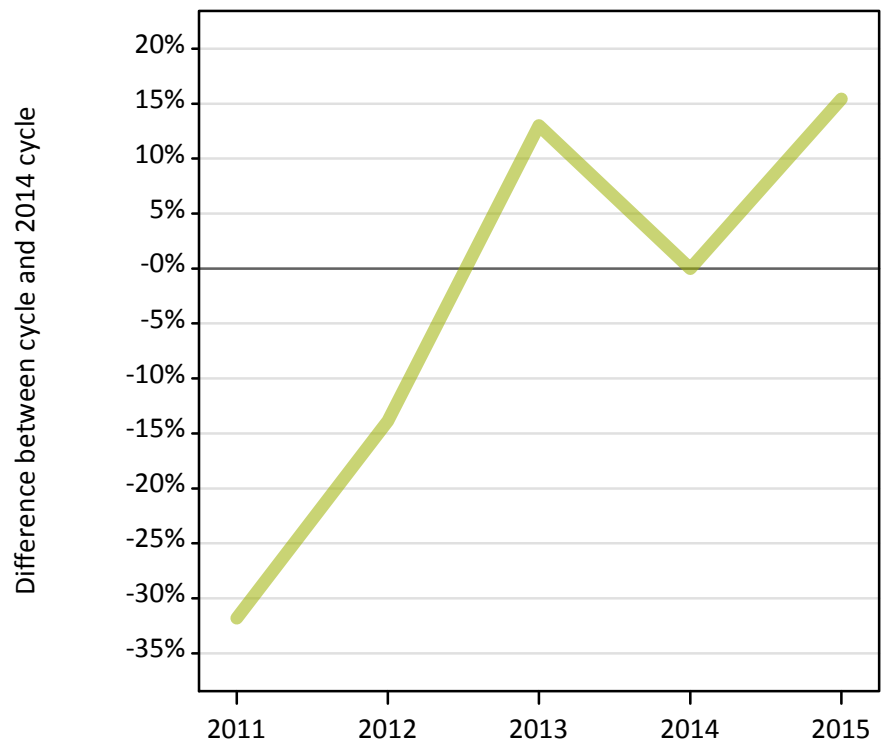
Applicants in unplaced states: difference between cycle and 2014 cycle

Applicant type	Status	2011	2012	2013	2014	2015
Main scheme	Holding offer	-7%	-11%	-7%	0%	1%
	Free to be placed in Clearing	28%	7%	-3%	0%	-8%

AX.15 Direct to Clearing applicants from England: 12 days after A level results day

Placed (Direct to Clearing): difference between cycle and 2014 cycle

Placed (Direct to Clearing)

**AX.16 Direct to Clearing applicants from England: 12 days after A level results day**

Direct to Clearing 12 days after A level results day

Applicant type	Status	2011	2012	2013	2014	2015
Direct to Clearing	Placed (Direct to Clearing)	3,810	4,820	6,320	5,590	6,460
	Other (Direct to Clearing)	6,940	5,650	6,440	5,740	6,280

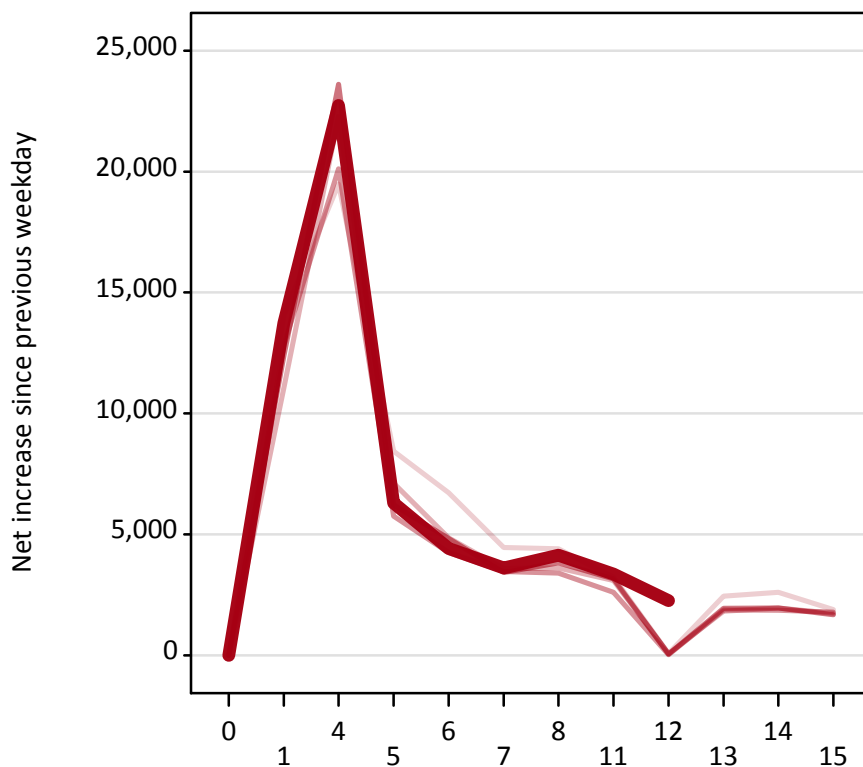
AX.17 Direct to Clearing applicants from England: 12 days after A level results day

Placed (Direct to Clearing): difference between cycle and 2014 cycle

Applicant type	Status	2011	2012	2013	2014	2015
Direct to Clearing	Placed (Direct to Clearing)	-32%	-14%	13%	0%	15%

AX.18 All Placed: Daily net change (from England)

Net increase since previous weekday (2015 cycle up to 12 days after A level results day)



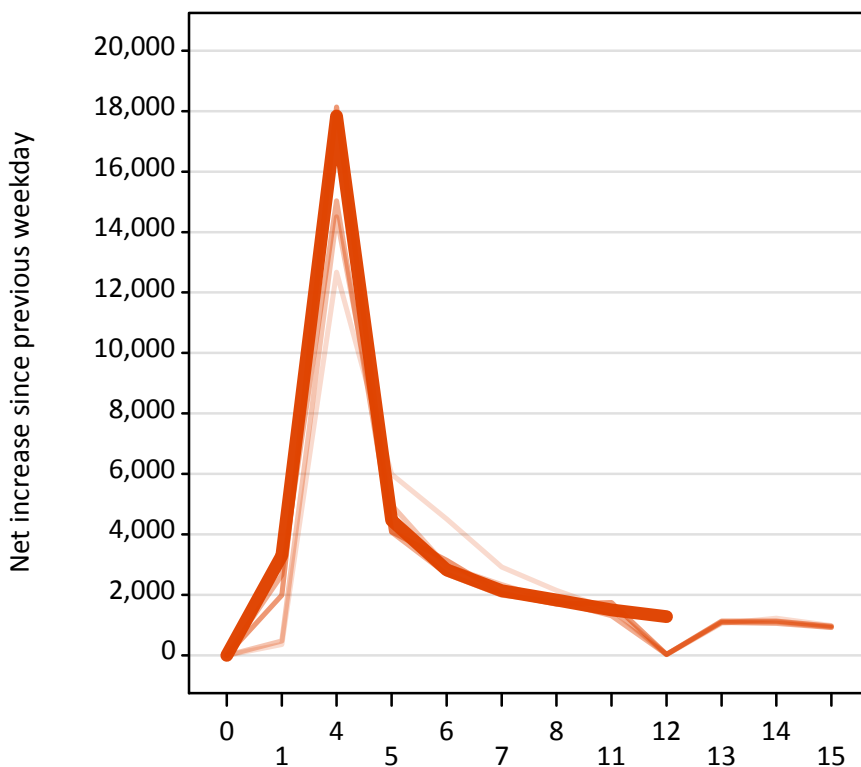
AX.19 All Placed: Daily net change (from England)

Net increase since previous weekday (2015 cycle up to 12 days after A level results day)

Applicant status, days since A level results day		2011	2012	2013	2014	2015
All Placed	0	0	0	0	0	0
	1	14,070	11,050	12,810	12,380	13,730
	4	19,480	22,270	20,120	23,620	22,730
	5	8,440	7,120	5,750	6,220	6,300
	6	6,730	4,860	4,240	4,830	4,410
	7	4,460	3,580	3,470	3,420	3,600
	8	4,410	3,610	3,400	3,830	4,140
	11	3,230	3,090	2,610	3,160	3,360
	12	80	70	30	50	2,250
	13	2,440	1,820	1,880	1,940	
	14	2,600	1,950	1,860	1,960	
	15	1,890	1,730	1,780	1,680	

AX.20 Placed through Clearing only: Daily net change (from England)

Net increase since previous weekday (2015 cycle up to 12 days after A level results day)



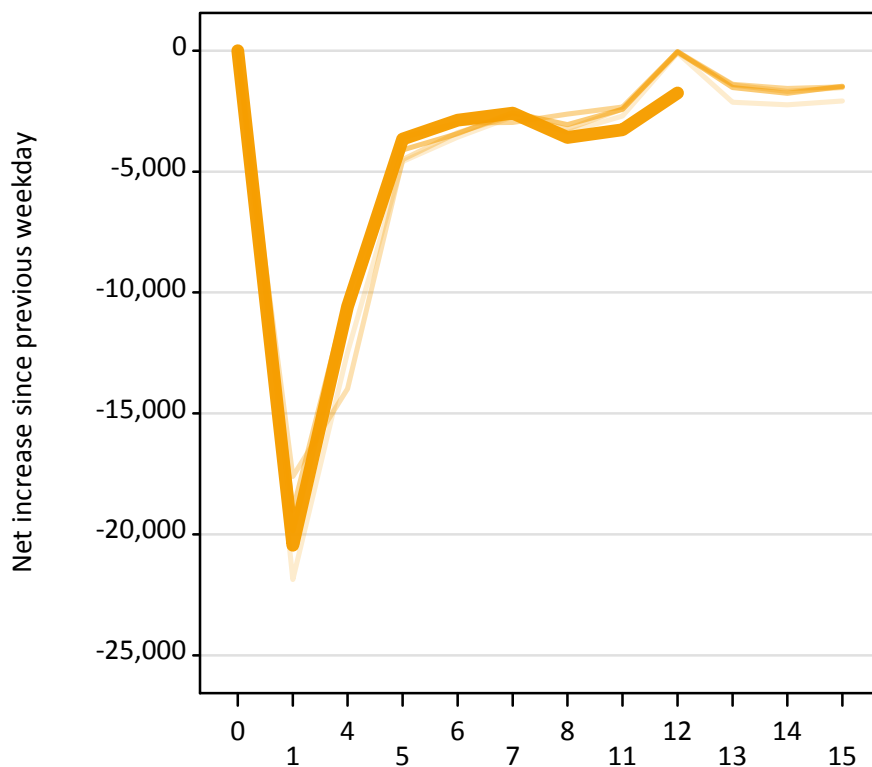
AX.21 Placed through Clearing only: Daily net change (from England)

Net increase since previous weekday (2015 cycle up to 12 days after A level results day)

Applicant status, days since A level results day		2011	2012	2013	2014	2015
Placed through Clearing only	0	0	0	0	0	0
	1	360	480	2,650	1,990	3,300
	4	12,670	14,500	15,030	18,140	17,840
	5	5,990	4,980	4,070	4,080	4,470
	6	4,510	2,950	2,690	3,140	2,830
	7	2,920	2,330	1,980	2,060	2,140
	8	2,150	1,780	1,780	1,690	1,830
	11	1,500	1,570	1,310	1,740	1,510
	12	20	30	30	30	1,280
	13	1,050	1,100	1,090	1,130	
	14	1,230	1,100	1,050	1,130	
	15	990	930	910	960	

AX.22 Holding Offer: Daily net change (from England)

Net increase since previous weekday (2015 cycle up to 12 days after A level results day)



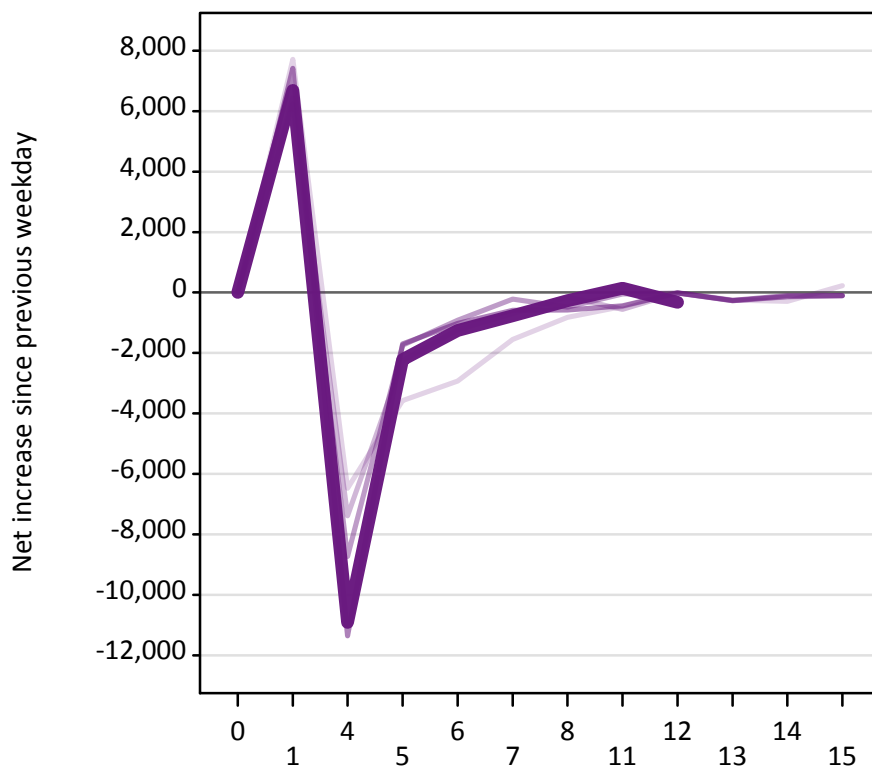
AX.23 Holding Offer: Daily net change (from England)

Net increase since previous weekday (2015 cycle up to 12 days after A level results day)

Applicant status, days since A level results day		2011	2012	2013	2014	2015
Holding Offer	0	0	0	0	0	0
	1	-21,870	-17,600	-19,010	-19,850	-20,460
	4	-12,470	-13,980	-10,150	-11,010	-10,570
	5	-4,580	-4,500	-3,590	-4,110	-3,660
	6	-3,570	-3,390	-3,000	-3,430	-2,870
	7	-2,720	-2,690	-2,970	-2,570	-2,590
	8	-3,380	-3,250	-2,620	-3,060	-3,590
	11	-2,710	-2,410	-2,330	-2,430	-3,270
	12	-90	-90	-40	-50	-1,740
	13	-2,140	-1,410	-1,390	-1,530	
	14	-2,240	-1,680	-1,570	-1,760	
	15	-2,070	-1,520	-1,500	-1,470	

AX.24 Free to be placed in Clearing: Daily net change (from England)

Net increase since previous weekday (2015 cycle up to 12 days after A level results day)



AX.25 Free to be placed in Clearing: Daily net change (from England)

Net increase since previous weekday (2015 cycle up to 12 days after A level results day)

Applicant status, days since A level results day		2011	2012	2013	2014	2015
Free to be placed in Clearing	0	0	0	0	0	0
	1	7,720	6,450	6,240	7,420	6,680
	4	-6,480	-7,380	-8,730	-11,360	-10,920
	5	-3,570	-2,250	-1,750	-1,700	-2,220
	6	-2,930	-1,240	-910	-1,020	-1,260
	7	-1,560	-690	-220	-590	-770
	8	-820	-140	-480	-580	-270
	11	-470	-560	-50	-440	140
	12	-10	-10	-20	-10	-330
	13	-250	-270	-270	-260	
	14	-290	-150	-130	-100	
	15	220	-110	-100	-100	