

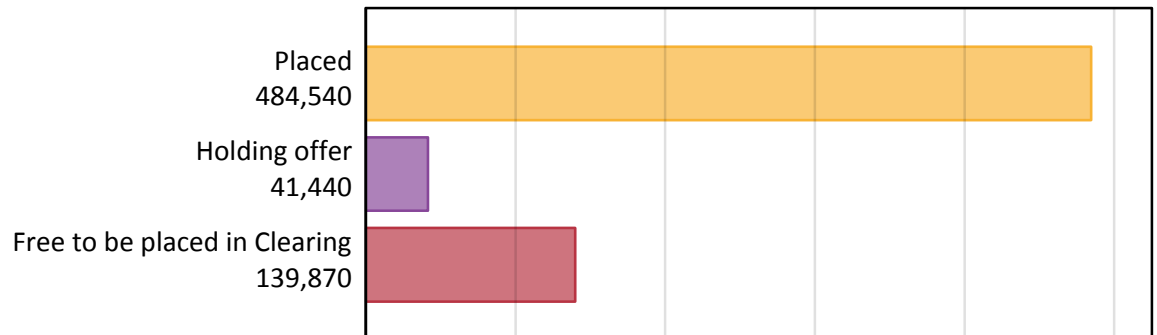
# Daily Clearing Analysis: Overview

Analysis at 00:05 on Tuesday 25 August 2015 (12 days after A level results day - No Scot.X1)

## AX.1 Applicants by type and status from all domiciles, 2015 cycle

Applicant type	Status	2015
Main scheme	Placed (Clearing)	39,040
	Placed (Adjustment)	1,160
	Placed (Firm)	385,710
	Placed (Insurance)	37,690
	Placed (Other)	13,210
	Holding offer	41,440
	Free to be placed in Clearing	139,870
Direct to Clearing	Placed (Direct to Clearing)	7,730
	Other (Direct to Clearing)	8,160
All applicants	Placed	484,540

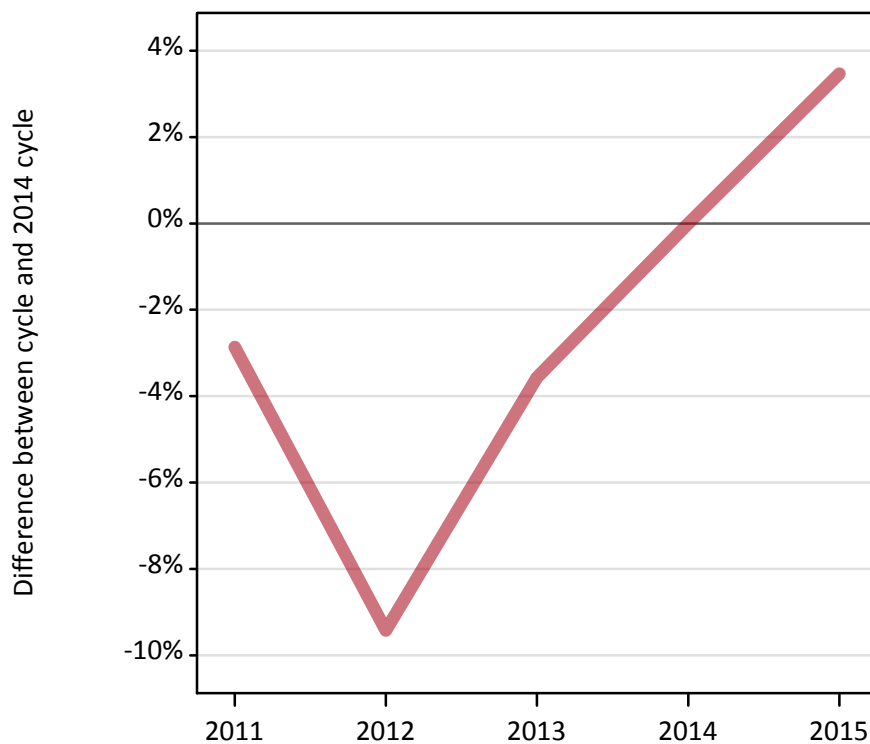
## AX.2 Summary of applicants who are placed, holding offers or free to be placed in Clearing ( all domiciles )



### AX.3 All placed applicants from all domiciles: 12 days after A level results day

All placed applicants: difference between cycle and 2014 cycle

Placed



### AX.4 All placed applicants from all domiciles: 12 days after A level results day

All placed applicants: applicants at 12 days after A level results day

Applicant type	Status	2011	2012	2013	2014	2015
All applicants	Placed	454,890	424,170	451,580	468,300	484,540

### AX.5 All placed applicants from all domiciles: 12 days after A level results day

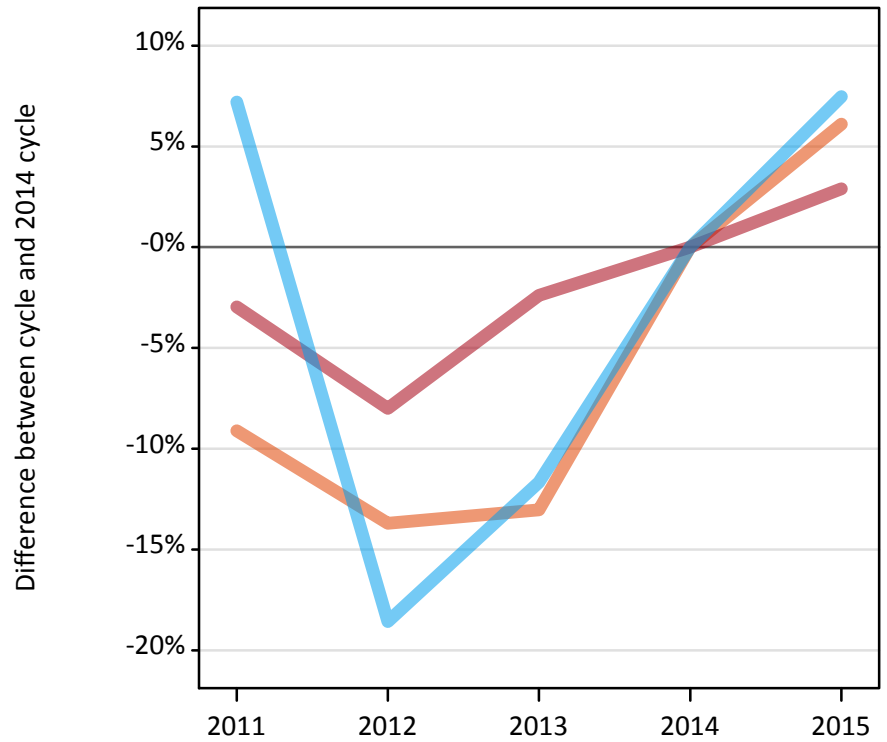
All placed applicants: difference between cycle and 2014 cycle

Applicant type	Status	2011	2012	2013	2014	2015
All applicants	Placed	-3%	-9%	-4%	0%	3%

### AX.6 Placed main scheme applicants from all domiciles: 12 days after A level results day

Selected placed routes: difference between cycle and 2014 cycle

- Placed (Clearing)
- Placed (Firm)
- Placed (Insurance)



### AX.7 Placed main scheme applicants from all domiciles: 12 days after A level results day

All Main scheme placed routes (excluding Adjustment): applicants at 12 days after A level results day

Applicant type	Status	2011	2012	2013	2014	2015
Main scheme	Placed (Clearing)	33,440	31,750	32,000	36,790	39,040
	Placed (Firm)	363,750	344,850	365,850	374,830	385,710
	Placed (Insurance)	37,600	28,560	30,980	35,080	37,690
	Placed (Other)	14,960	11,770	14,070	13,750	13,210

### AX.8 Placed main scheme applicants from all domiciles: 12 days after A level results day

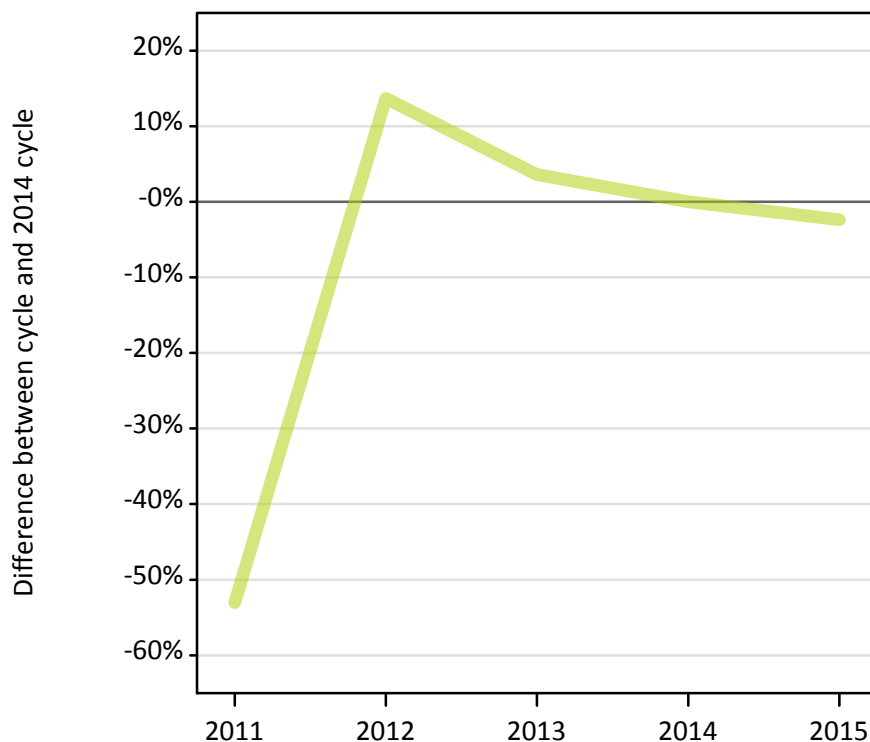
Selected placed routes: difference between cycle and 2014 cycle

Applicant type	Status	2011	2012	2013	2014	2015
Main scheme	Placed (Clearing)	-9%	-14%	-13%	0%	6%
	Placed (Firm)	-3%	-8%	-2%	0%	3%
	Placed (Insurance)	7%	-19%	-12%	0%	7%

### AX.9 Main scheme applicants placed through adjustment: 12 days after A level results day

Placed through adjustment: difference between cycle and 2014 cycle

Placed (Adjustment)



### AX.10 Main scheme applicants placed through adjustment: 12 days after A level results day

Placed through adjustment: applicants at 12 days after A level results day

Applicant type	Status	2011	2012	2013	2014	2015
Main scheme	Placed (Adjustment)	560	1,360	1,240	1,190	1,160

### AX.11 Main scheme applicants placed through adjustment: 12 days after A level results day

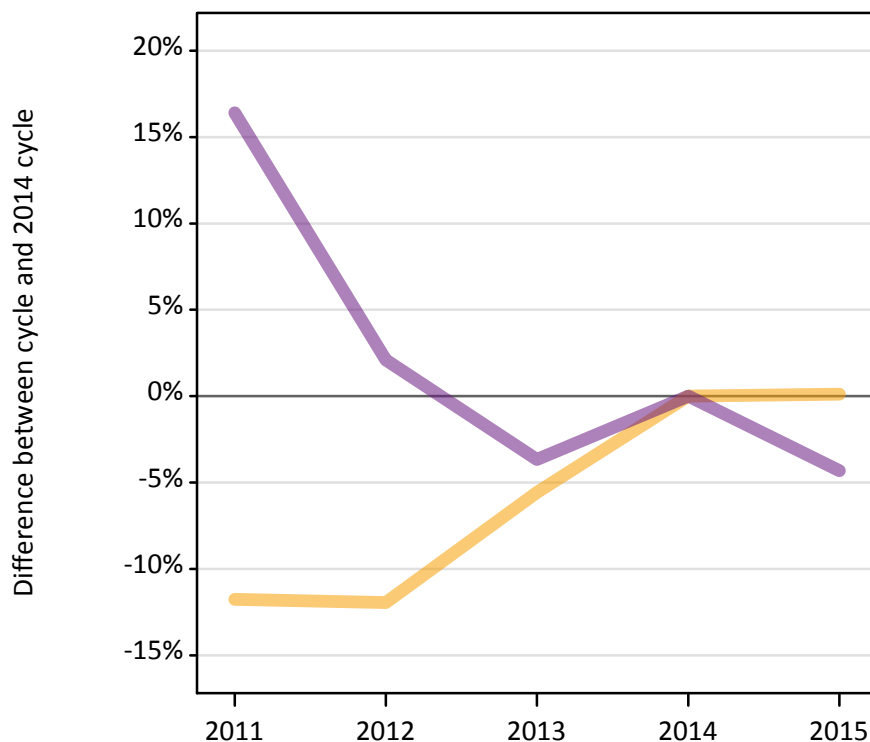
Placed through adjustment: difference between cycle and 2014 cycle

Applicant type	Status	2011	2012	2013	2014	2015
Main scheme	Placed (Adjustment)	-53%	14%	4%	0%	-2%

**AX.12 Main scheme applicants not currently placed from all domiciles: 12 days after A level results day**

Applicants in unplaced states: difference between cycle and 2014 cycle

— Holding offer  
— Free to be placed in Clearing



**AX.13 Main scheme applicants not currently placed from all domiciles: 12 days after A level results day**

Applicants in unplaced states: applicants at 12 days after A level results day

Applicant type	Status	2011	2012	2013	2014	2015
Main scheme	Holding offer	36,530	36,450	39,090	41,400	41,440
	Free to be placed in Clearing	170,170	149,250	140,820	146,180	139,870

**AX.14 Main scheme applicants not currently placed from all domiciles: 12 days after A level results day**

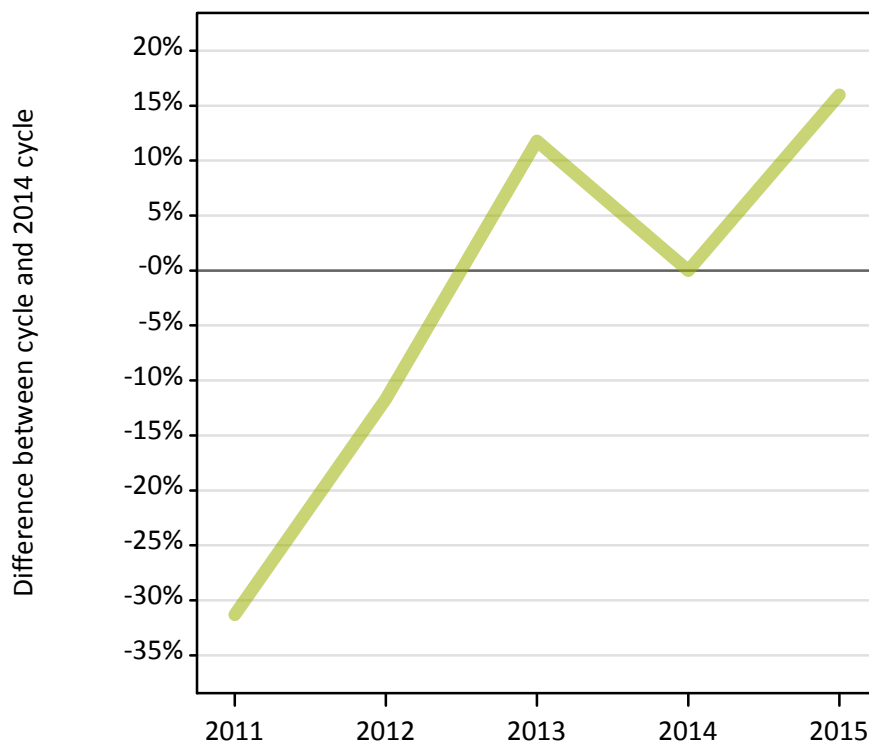
Applicants in unplaced states: difference between cycle and 2014 cycle

Applicant type	Status	2011	2012	2013	2014	2015
Main scheme	Holding offer	-12%	-12%	-6%	0%	0%
	Free to be placed in Clearing	16%	2%	-4%	0%	-4%

**AX.15 Direct to Clearing applicants from all domiciles: 12 days after A level results day**

Placed (Direct to Clearing): difference between cycle and 2014 cycle

Placed (Direct to Clearing)

**AX.16 Direct to Clearing applicants from all domiciles: 12 days after A level results day**

Direct to Clearing 12 days after A level results day

Applicant type	Status	2011	2012	2013	2014	2015
Direct to Clearing	Placed (Direct to Clearing)	4,580	5,890	7,450	6,660	7,730
	Other (Direct to Clearing)	8,800	7,370	8,290	7,440	8,160

**AX.17 Direct to Clearing applicants from all domiciles: 12 days after A level results day**

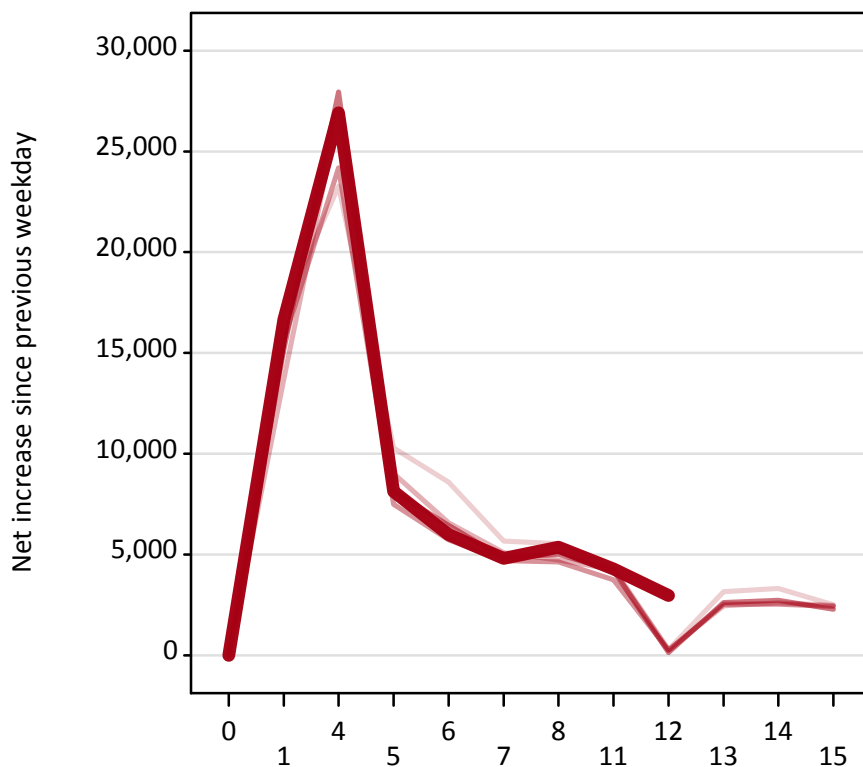
Placed (Direct to Clearing): difference between cycle and 2014 cycle

Applicant type	Status	2011	2012	2013	2014	2015
Direct to Clearing	Placed (Direct to Clearing)	-31%	-12%	12%	0%	16%

**AX.18 All Placed: Daily net change (from all domiciles)**

Net increase since previous weekday (2015 cycle up to 12 days after A level results day)

- 2011
- 2012
- 2013
- 2014
- 2015



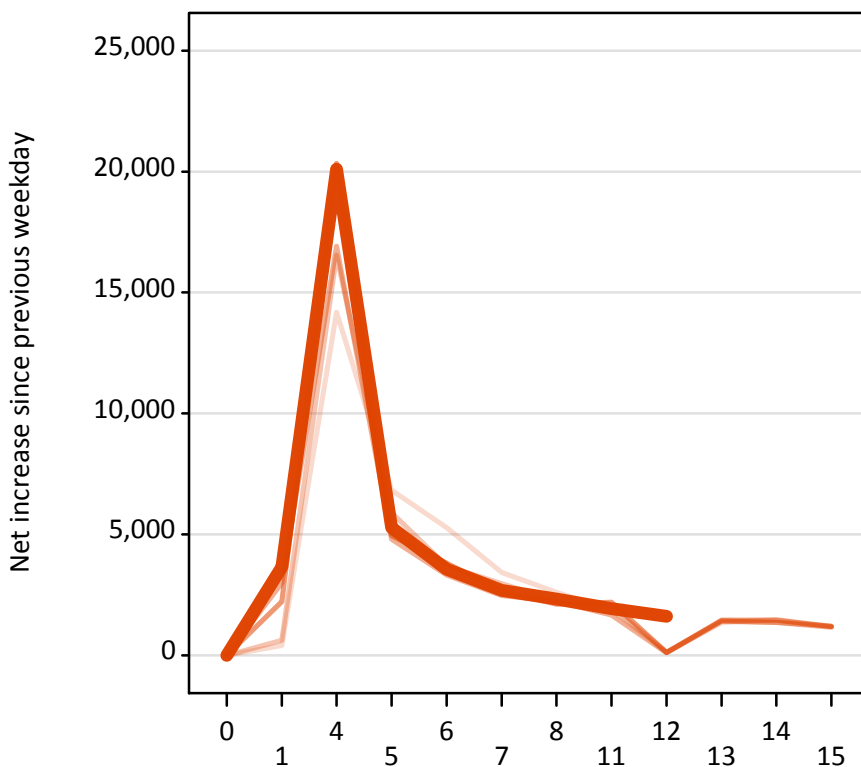
**AX.19 All Placed: Daily net change (from all domiciles)**

Net increase since previous weekday (2015 cycle up to 12 days after A level results day)

Applicant status, days since A level results day		2011	2012	2013	2014	2015
All Placed	0	0	0	0	0	0
	1	17,120	13,700	15,630	15,180	16,660
	4	23,280	26,960	24,180	27,960	26,920
	5	10,300	9,020	7,490	8,140	8,130
	6	8,580	6,560	5,720	6,450	5,990
	7	5,670	5,090	4,700	4,830	4,810
	8	5,530	4,730	4,640	5,020	5,360
	11	4,300	4,250	3,740	4,210	4,290
	12	280	260	240	130	2,970
	13	3,150	2,450	2,540	2,620	
	14	3,310	2,610	2,540	2,730	
	15	2,500	2,470	2,420	2,280	

**AX.20 Placed through Clearing only: Daily net change (from all domiciles)**

Net increase since previous weekday (2015 cycle up to 12 days after A level results day)



**AX.21 Placed through Clearing only: Daily net change (from all domiciles)**

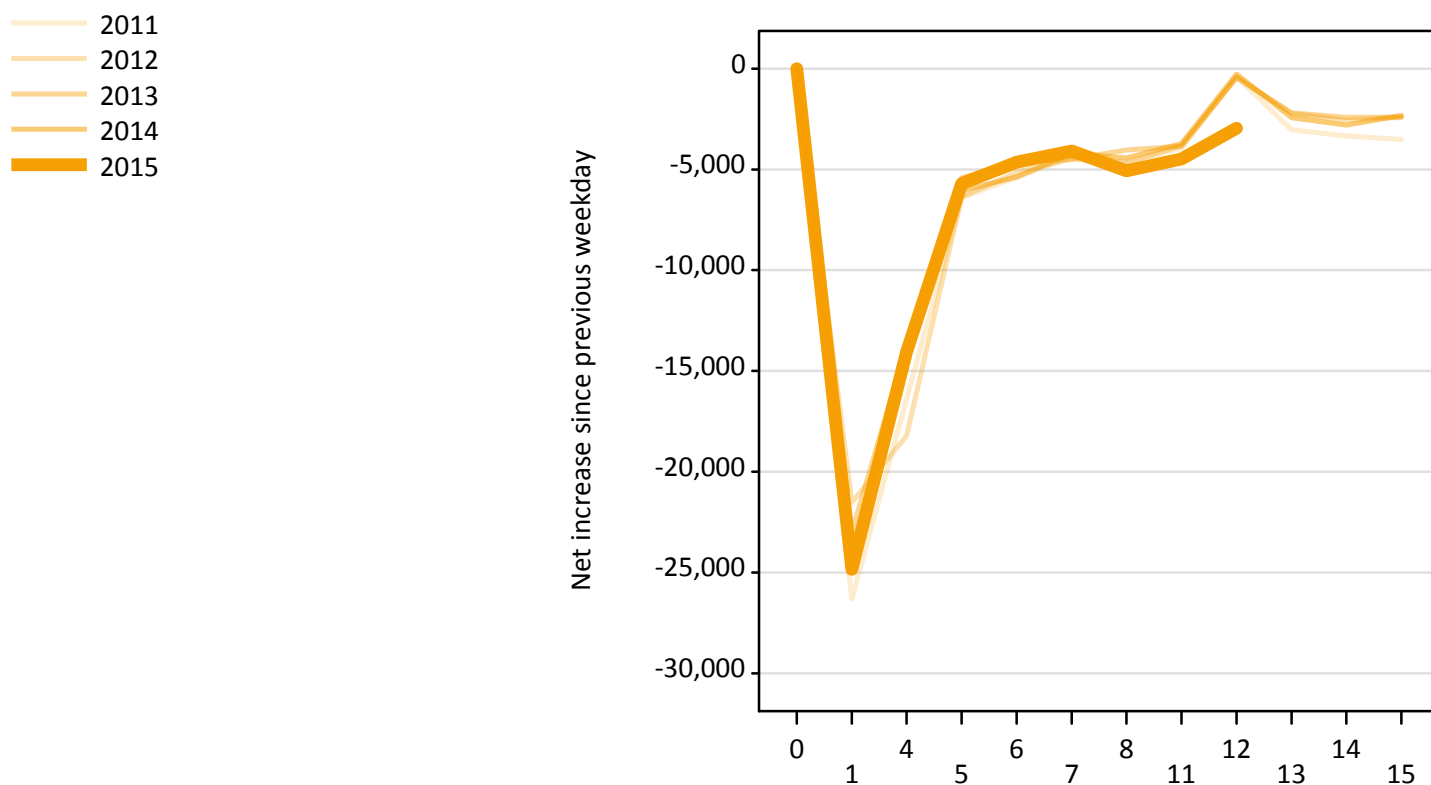
Net increase since previous weekday (2015 cycle up to 12 days after A level results day)

Applicant status, days since A level results day		2011	2012	2013	2014	2015
Placed through Clearing only	0	0	0	0	0	0
	1	410	620	2,980	2,220	3,660
	4	14,190	16,540	16,910	20,340	20,100
	5	6,820	5,900	4,800	4,940	5,280
	6	5,280	3,690	3,320	3,810	3,560
	7	3,420	2,950	2,470	2,650	2,680
	8	2,600	2,260	2,240	2,120	2,330
	11	1,890	2,000	1,670	2,200	1,920
	12	120	130	100	120	1,620
	13	1,340	1,420	1,410	1,450	
	14	1,480	1,360	1,350	1,450	
	15	1,180	1,210	1,170	1,180	



**AX.22 Holding Offer: Daily net change (from all domiciles)**

Net increase since previous weekday (2015 cycle up to 12 days after A level results day)



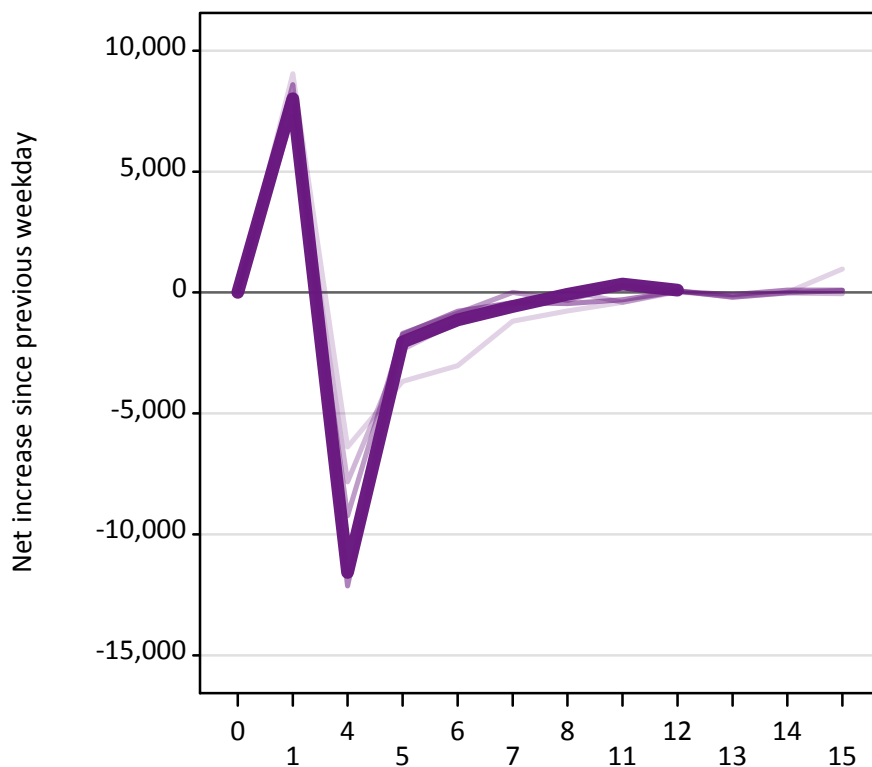
**AX.23 Holding Offer: Daily net change (from all domiciles)**

Net increase since previous weekday (2015 cycle up to 12 days after A level results day)

Applicant status, days since A level results day		2011	2012	2013	2014	2015
Holding Offer	0	0	0	0	0	0
	1	-26,320	-21,530	-23,000	-23,930	-24,850
	4	-16,390	-18,220	-13,710	-14,530	-14,060
	5	-6,400	-6,370	-5,410	-6,050	-5,700
	6	-5,410	-5,120	-4,630	-5,370	-4,640
	7	-4,370	-4,480	-4,500	-4,200	-4,080
	8	-4,650	-4,690	-4,040	-4,430	-5,070
	11	-3,940	-3,810	-3,850	-3,720	-4,490
	12	-400	-440	-420	-270	-2,960
	13	-3,040	-2,220	-2,190	-2,440	
	14	-3,330	-2,560	-2,410	-2,790	
	15	-3,510	-2,420	-2,400	-2,320	

### AX.24 Free to be placed in Clearing: Daily net change (from all domiciles)

Net increase since previous weekday (2015 cycle up to 12 days after A level results day)



### AX.25 Free to be placed in Clearing: Daily net change (from all domiciles)

Net increase since previous weekday (2015 cycle up to 12 days after A level results day)

Applicant status, days since A level results day		2011	2012	2013	2014	2015
Free to be placed in Clearing	0	0	0	0	0	0
	1	9,050	7,690	7,330	8,600	8,010
	4	-6,390	-7,830	-9,230	-12,130	-11,570
	5	-3,680	-2,350	-1,690	-1,720	-2,040
	6	-3,030	-1,210	-860	-770	-1,130
	7	-1,180	-500	0	-420	-570
	8	-760	70	-330	-450	-80
	11	-400	-400	290	-300	340
	12	20	60	70	40	100
	13	-140	-190	-190	-90	
	14	0	-30	-10	100	
	15	970	-40	90	90	