

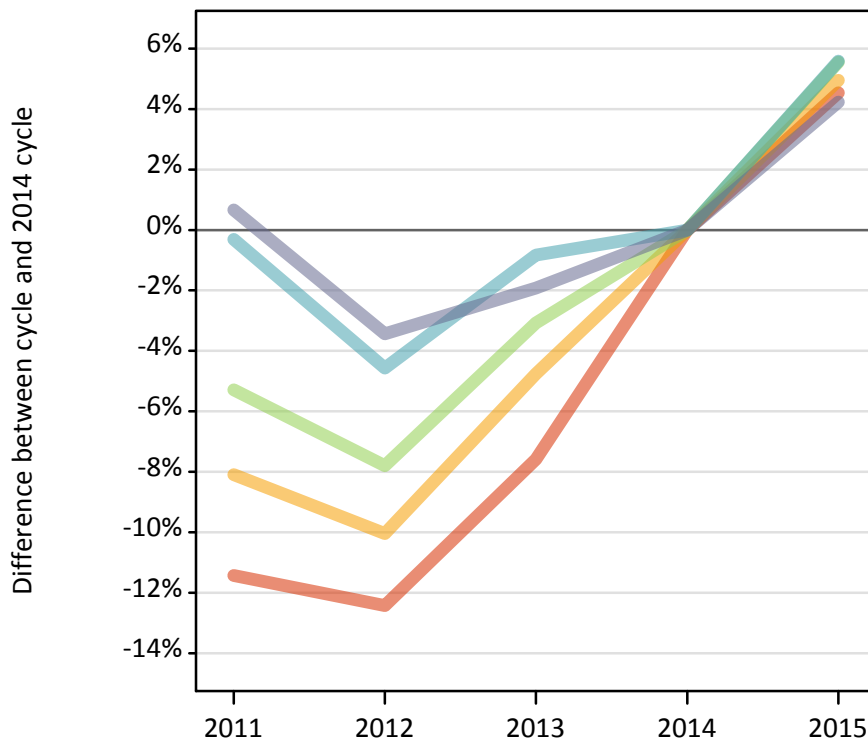
# Daily Clearing Analysis: POLAR3

Analysis at 00:05 on Monday 24 August 2015 (11 days after A level results day)

P.1 Placed 18 year old applicants from England by POLAR3 quintile: 11 days after A level results day

Placed 18 year old applicants: change relative to 2014 cycle totals

- Quintile 1
- Quintile 2
- Quintile 3
- Quintile 4
- Quintile 5



P.2 Placed 18 year old applicants from England by POLAR3 quintile: 11 days after A level results day

Applicant Status	POLAR3	2011	2012	2013	2014	2015
Placed	Quintile 1	18,520	18,310	19,320	20,910	21,860
	Quintile 2	27,040	26,460	28,020	29,420	30,870
	Quintile 3	35,290	34,350	36,110	37,250	39,330
	Quintile 4	43,420	41,560	43,190	43,550	45,990
	Quintile 5	58,530	56,150	57,030	58,150	60,600

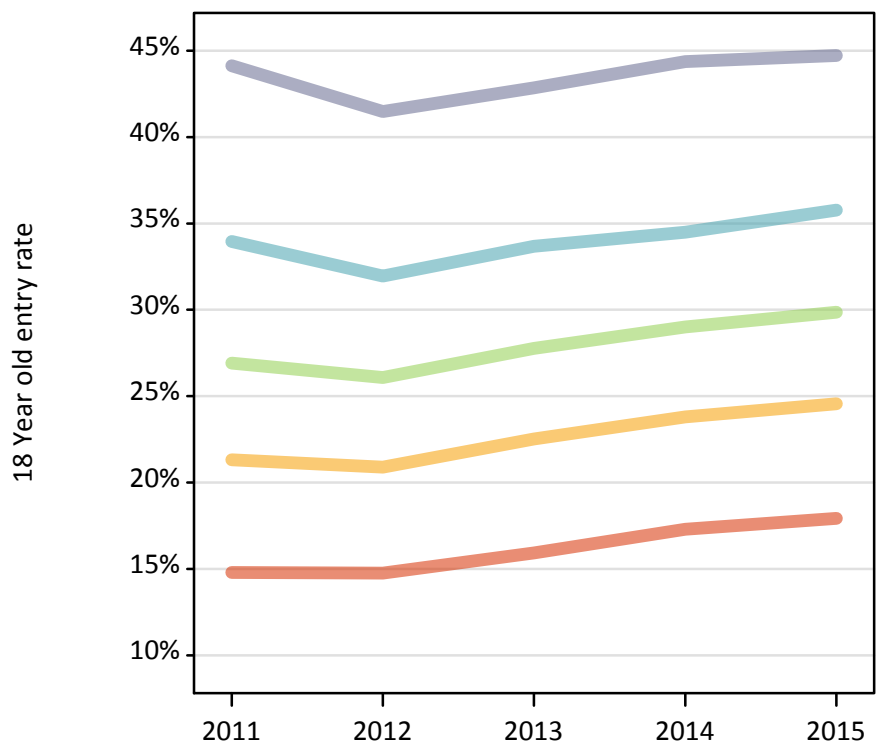
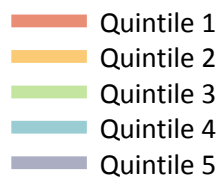
P.3 Placed 18 year old applicants from England by POLAR3 quintile: 11 days after A level results day

Placed 18 year old applicants: change relative to 2014 cycle totals

Applicant Status	POLAR3	2011	2012	2013	2014	2015
Placed	Quintile 1	-11%	-12%	-8%	0%	5%
	Quintile 2	-8%	-10%	-5%	0%	5%
	Quintile 3	-5%	-8%	-3%	0%	6%
	Quintile 4	-0%	-5%	-1%	0%	6%
	Quintile 5	1%	-3%	-2%	0%	4%

**P.4 Placed 18 year old applicants from England by POLAR3 quintile: 11 days after A level results day**

Placed 18 year old applicants: entry rate



**P.5 Placed 18 year old applicants from England by POLAR3 quintile: 11 days after A level results day**

Placed 18 year old applicants: entry rate

Applicant Status	POLAR3	2011	2012	2013	2014	2015
Placed	Quintile 1	14.8%	14.8%	15.9%	17.3%	17.9%
	Quintile 2	21.3%	20.9%	22.5%	23.8%	24.6%
	Quintile 3	26.9%	26.1%	27.8%	29.0%	29.9%
	Quintile 4	34.0%	31.9%	33.7%	34.5%	35.8%
	Quintile 5	44.1%	41.5%	42.8%	44.4%	44.7%

**P.6 Placed 18 year old applicants from England by POLAR3 quintile: 11 days after A level results day**

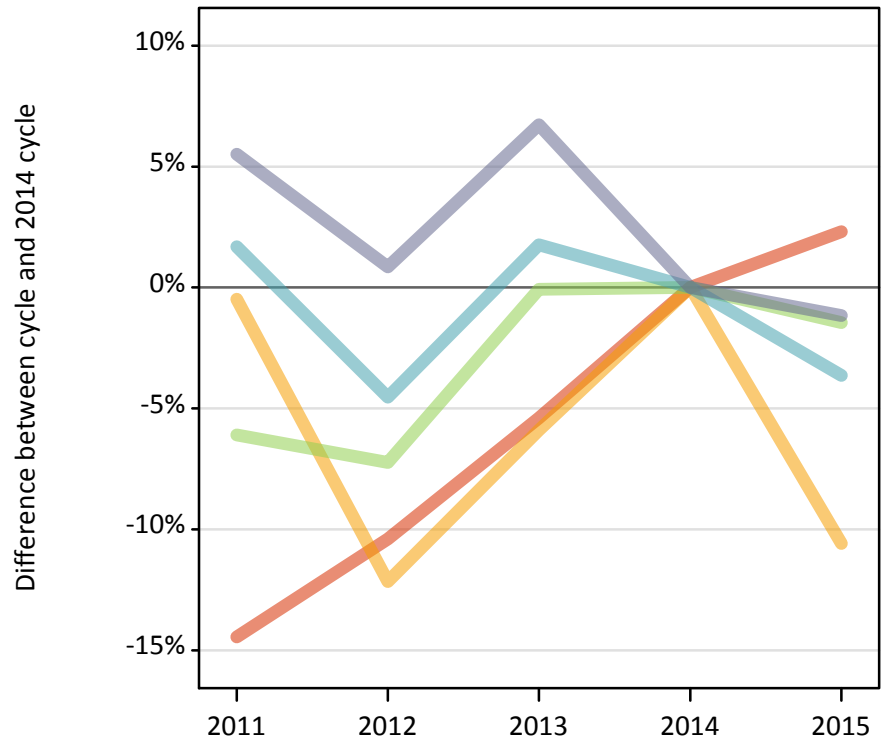
Placed 18 year old applicants: entry rate (indexed to 100 = Quintile 1)

Applicant Status	POLAR3	2011	2012	2013	2014	2015
Placed	Quintile 1	100	100	100	100	100
	Quintile 2	144	142	141	138	137
	Quintile 3	182	177	174	168	167
	Quintile 4	230	216	211	199	200
	Quintile 5	298	281	269	257	249

**P.7 Placed 18 year old applicants from Northern Ireland by POLAR3 quintile: 11 days after A level results day**

Placed 18 year old applicants: change relative to 2014 cycle totals

- Quintile 1
- Quintile 2
- Quintile 3
- Quintile 4
- Quintile 5



**P.8 Placed 18 year old applicants from Northern Ireland by POLAR3 quintile: 11 days after A level results day**

Applicant Status	POLAR3	2011	2012	2013	2014	2015
Placed	Quintile 1	440	470	490	520	530
	Quintile 2	830	730	780	830	740
	Quintile 3	1,230	1,220	1,310	1,310	1,290
	Quintile 4	2,600	2,440	2,600	2,560	2,460
	Quintile 5	3,450	3,300	3,490	3,270	3,230

**P.9 Placed 18 year old applicants from Northern Ireland by POLAR3 quintile: 11 days after A level results day**

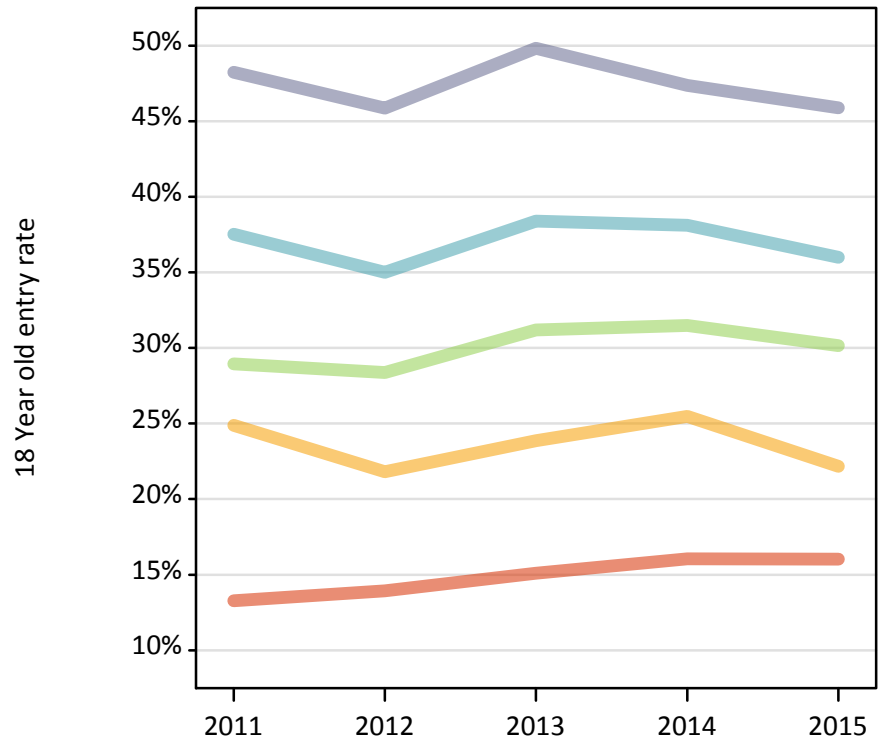
Placed 18 year old applicants: change relative to 2014 cycle totals

Applicant Status	POLAR3	2011	2012	2013	2014	2015
Placed	Quintile 1	-14%	-10%	-5%	0%	2%
	Quintile 2	-0%	-12%	-6%	0%	-11%
	Quintile 3	-6%	-7%	-0%	0%	-1%
	Quintile 4	2%	-5%	2%	0%	-4%
	Quintile 5	6%	1%	7%	0%	-1%

**P.10 Placed 18 year old applicants from Northern Ireland by POLAR3 quintile: 11 days after A level results day**

Placed 18 year old applicants: entry rate

- Quintile 1
- Quintile 2
- Quintile 3
- Quintile 4
- Quintile 5



**P.11 Placed 18 year old applicants from Northern Ireland by POLAR3 quintile: 11 days after A level results day**

Placed 18 year old applicants: entry rate

Applicant Status	POLAR3	2011	2012	2013	2014	2015
Placed	Quintile 1	13.3%	13.9%	15.1%	16.1%	16.0%
	Quintile 2	24.9%	21.8%	23.9%	25.5%	22.2%
	Quintile 3	28.9%	28.4%	31.2%	31.5%	30.2%
	Quintile 4	37.5%	35.0%	38.4%	38.1%	36.0%
	Quintile 5	48.2%	45.9%	49.8%	47.4%	45.9%

**P.12 Placed 18 year old applicants from Northern Ireland by POLAR3 quintile: 11 days after A level results day**

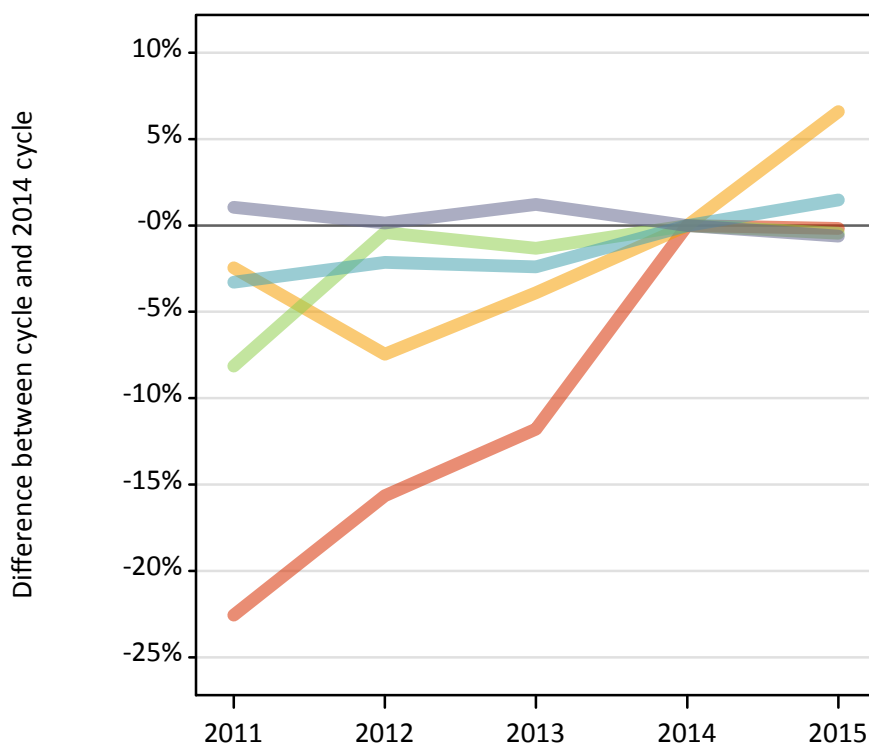
Placed 18 year old applicants: entry rate (indexed to 100 = Quintile 1)

Applicant Status	POLAR3	2011	2012	2013	2014	2015
Placed	Quintile 1	100	100	100	100	100
	Quintile 2	188	157	158	159	138
	Quintile 3	218	204	207	196	188
	Quintile 4	283	251	254	237	225
	Quintile 5	364	329	330	295	286

**P.13 Placed 18 year old applicants from Scotland by POLAR3 quintile: 11 days after A level results day**

Placed 18 year old applicants: change relative to 2014 cycle totals

- Quintile 1
- Quintile 2
- Quintile 3
- Quintile 4
- Quintile 5



**P.14 Placed 18 year old applicants from Scotland by POLAR3 quintile: 11 days after A level results day**

Applicant Status	POLAR3	2011	2012	2013	2014	2015
Placed	Quintile 1	460	500	520	590	590
	Quintile 2	1,350	1,280	1,330	1,380	1,470
	Quintile 3	2,010	2,180	2,160	2,190	2,180
	Quintile 4	3,260	3,300	3,290	3,370	3,420
	Quintile 5	6,800	6,740	6,810	6,730	6,690

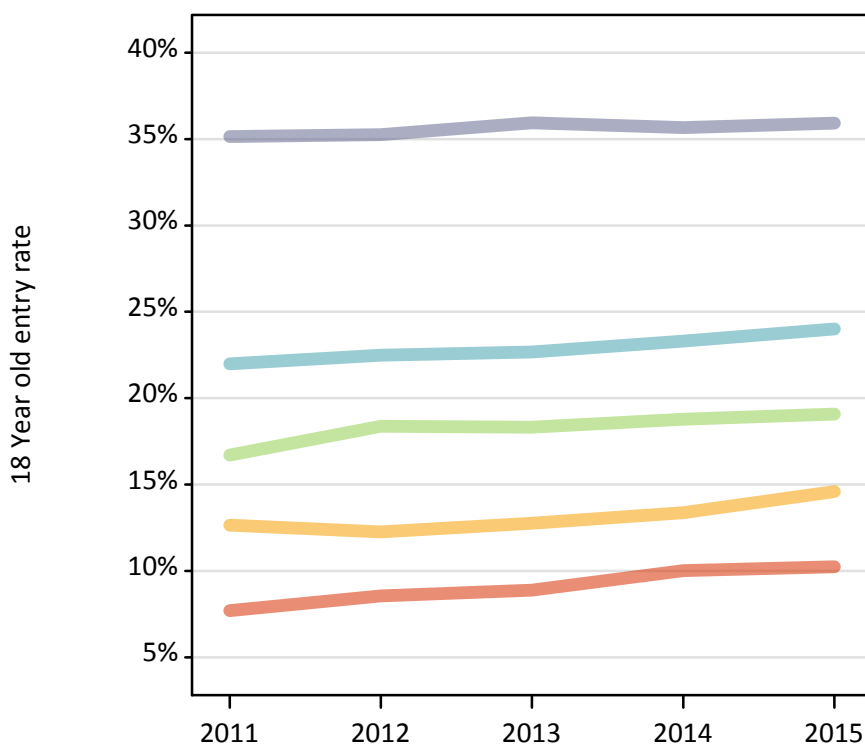
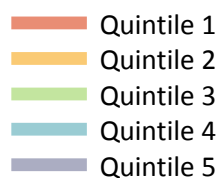
**P.15 Placed 18 year old applicants from Scotland by POLAR3 quintile: 11 days after A level results day**

Placed 18 year old applicants: change relative to 2014 cycle totals

Applicant Status	POLAR3	2011	2012	2013	2014	2015
Placed	Quintile 1	-23%	-16%	-12%	0%	-0%
	Quintile 2	-2%	-7%	-4%	0%	7%
	Quintile 3	-8%	-0%	-1%	0%	-0%
	Quintile 4	-3%	-2%	-2%	0%	1%
	Quintile 5	1%	0%	1%	0%	-1%

**P.16 Placed 18 year old applicants from Scotland by POLAR3 quintile: 11 days after A level results day**

Placed 18 year old applicants: entry rate



**P.17 Placed 18 year old applicants from Scotland by POLAR3 quintile: 11 days after A level results day**

Placed 18 year old applicants: entry rate

Applicant Status	POLAR3	2011	2012	2013	2014	2015
Placed	Quintile 1	7.7%	8.6%	8.9%	10.0%	10.2%
	Quintile 2	12.6%	12.3%	12.8%	13.4%	14.6%
	Quintile 3	16.7%	18.4%	18.3%	18.8%	19.1%
	Quintile 4	22.0%	22.5%	22.7%	23.3%	24.0%
	Quintile 5	35.1%	35.3%	35.9%	35.7%	35.9%

**P.18 Placed 18 year old applicants from Scotland by POLAR3 quintile: 11 days after A level results day**

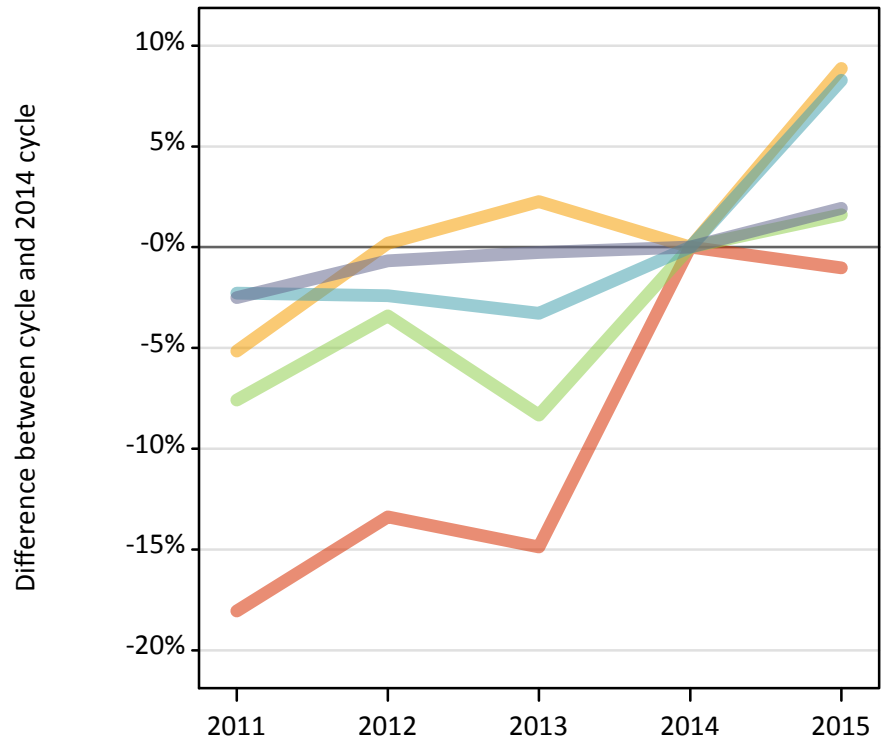
Placed 18 year old applicants: entry rate (indexed to 100 = Quintile 1)

Applicant Status	POLAR3	2011	2012	2013	2014	2015
Placed	Quintile 1	100	100	100	100	100
	Quintile 2	164	143	144	134	142
	Quintile 3	217	215	206	188	186
	Quintile 4	285	263	255	233	234
	Quintile 5	456	412	405	356	351

**P.19 Placed 18 year old applicants from Wales by POLAR3 quintile: 11 days after A level results day**

Placed 18 year old applicants: change relative to 2014 cycle totals

- Quintile 1
- Quintile 2
- Quintile 3
- Quintile 4
- Quintile 5



**P.20 Placed 18 year old applicants from Wales by POLAR3 quintile: 11 days after A level results day**

Applicant Status	POLAR3	2011	2012	2013	2014	2015
Placed	Quintile 1	1,210	1,280	1,250	1,470	1,460
	Quintile 2	1,840	1,940	1,980	1,940	2,110
	Quintile 3	1,600	1,670	1,590	1,730	1,760
	Quintile 4	2,150	2,150	2,130	2,200	2,380
	Quintile 5	2,570	2,620	2,630	2,640	2,690

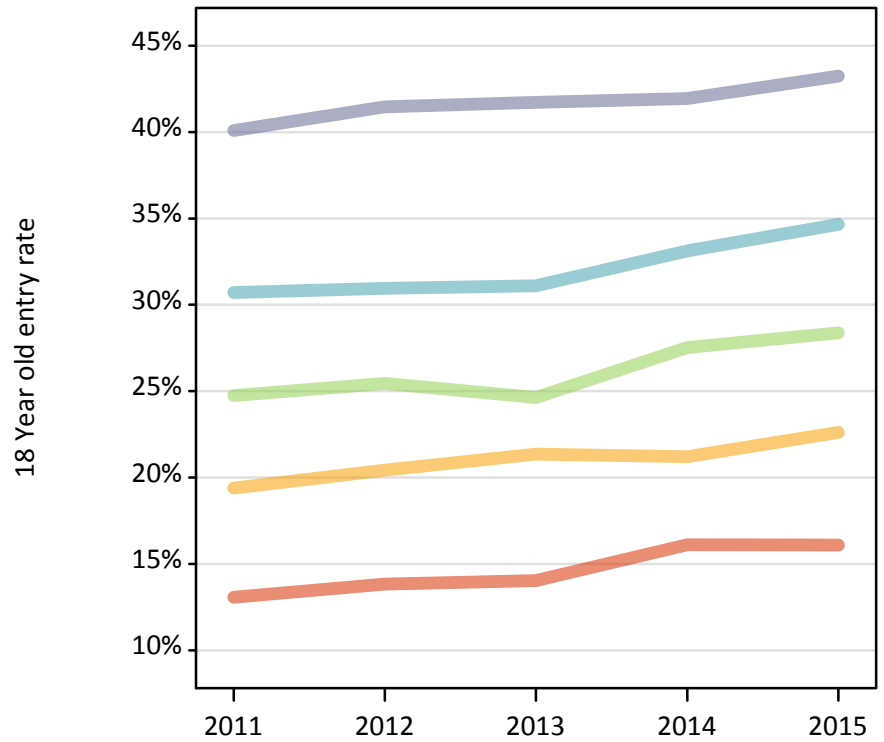
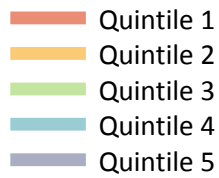
**P.21 Placed 18 year old applicants from Wales by POLAR3 quintile: 11 days after A level results day**

Placed 18 year old applicants: change relative to 2014 cycle totals

Applicant Status	POLAR3	2011	2012	2013	2014	2015
Placed	Quintile 1	-18%	-13%	-15%	0%	-1%
	Quintile 2	-5%	0%	2%	0%	9%
	Quintile 3	-8%	-3%	-8%	0%	2%
	Quintile 4	-2%	-2%	-3%	0%	8%
	Quintile 5	-3%	-1%	-0%	0%	2%

**P.22 Placed 18 year old applicants from Wales by POLAR3 quintile: 11 days after A level results day**

Placed 18 year old applicants: entry rate



**P.23 Placed 18 year old applicants from Wales by POLAR3 quintile: 11 days after A level results day**

Placed 18 year old applicants: entry rate

Applicant Status	POLAR3	2011	2012	2013	2014	2015
Placed	Quintile 1	13.1%	13.8%	14.0%	16.1%	16.1%
	Quintile 2	19.4%	20.4%	21.3%	21.2%	22.6%
	Quintile 3	24.8%	25.4%	24.6%	27.5%	28.4%
	Quintile 4	30.7%	31.0%	31.1%	33.1%	34.7%
	Quintile 5	40.1%	41.5%	41.7%	41.9%	43.2%

**P.24 Placed 18 year old applicants from Wales by POLAR3 quintile: 11 days after A level results day**

Placed 18 year old applicants: entry rate (indexed to 100 = Quintile 1)

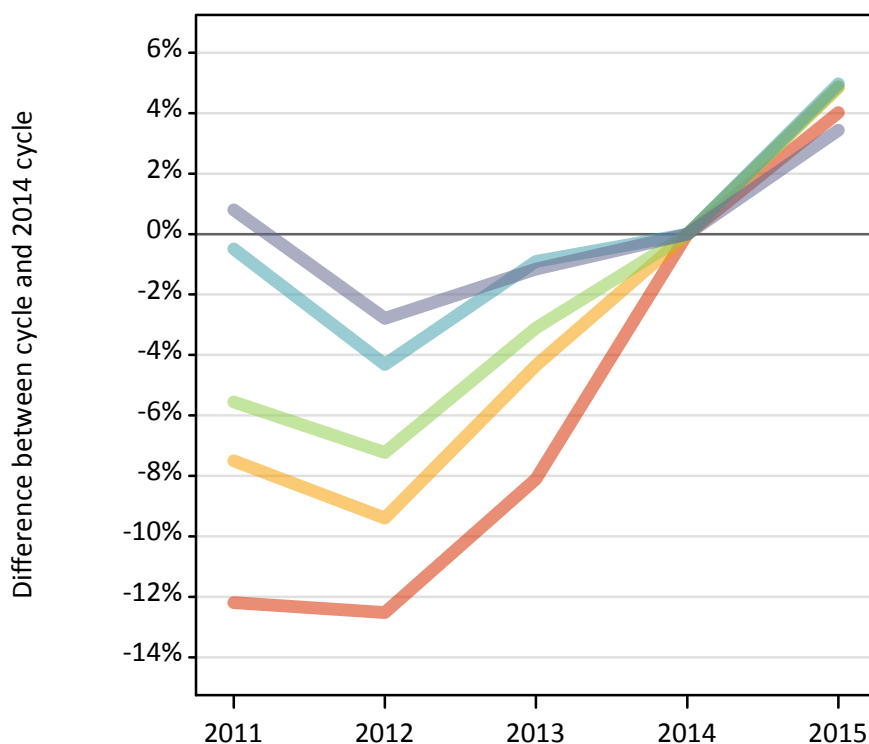
Applicant Status	POLAR3	2011	2012	2013	2014	2015
Placed	Quintile 1	100	100	100	100	100
	Quintile 2	148	148	152	132	141
	Quintile 3	189	184	175	171	176
	Quintile 4	235	224	221	205	216
	Quintile 5	307	300	297	260	269



**P.25 Placed 18 year old applicants from the UK by POLAR3 quintile: 11 days after A level results day**

Placed 18 year old applicants: change relative to 2014 cycle totals

- Quintile 1
- Quintile 2
- Quintile 3
- Quintile 4
- Quintile 5



**P.26 Placed 18 year old applicants from the UK by POLAR3 quintile: 11 days after A level results day**

Applicant Status	POLAR3	2011	2012	2013	2014	2015
Placed	Quintile 1	20,630	20,550	21,590	23,490	24,440
	Quintile 2	31,050	30,420	32,110	33,570	35,200
	Quintile 3	40,130	39,420	41,170	42,480	44,550
	Quintile 4	51,430	49,450	51,220	51,680	54,250
	Quintile 5	71,350	68,800	69,960	70,780	73,210

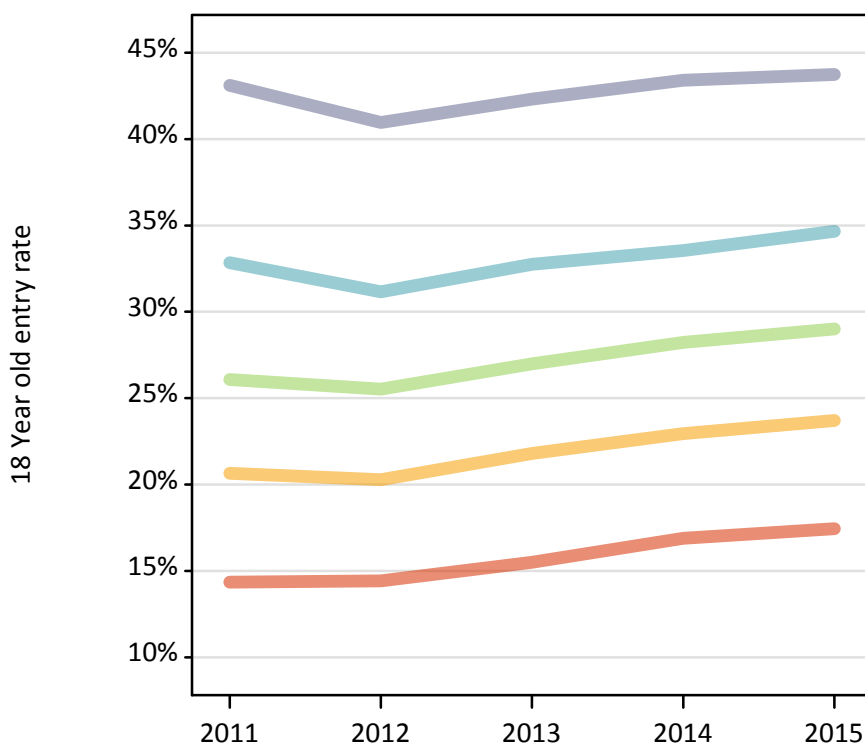
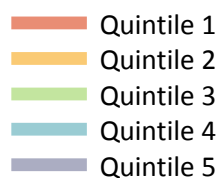
**P.27 Placed 18 year old applicants from the UK by POLAR3 quintile: 11 days after A level results day**

Placed 18 year old applicants: change relative to 2014 cycle totals

Applicant Status	POLAR3	2011	2012	2013	2014	2015
Placed	Quintile 1	-12%	-13%	-8%	0%	4%
	Quintile 2	-8%	-9%	-4%	0%	5%
	Quintile 3	-6%	-7%	-3%	0%	5%
	Quintile 4	-0%	-4%	-1%	0%	5%
	Quintile 5	1%	-3%	-1%	0%	3%

**P.28 Placed 18 year old applicants from the UK by POLAR3 quintile: 11 days after A level results day**

Placed 18 year old applicants: entry rate



**P.29 Placed 18 year old applicants from the UK by POLAR3 quintile: 11 days after A level results day**

Placed 18 year old applicants: entry rate

Applicant Status	POLAR3	2011	2012	2013	2014	2015
Placed	Quintile 1	14.4%	14.4%	15.5%	16.9%	17.4%
	Quintile 2	20.7%	20.3%	21.8%	22.9%	23.7%
	Quintile 3	26.1%	25.5%	27.0%	28.2%	29.0%
	Quintile 4	32.8%	31.2%	32.7%	33.5%	34.7%
	Quintile 5	43.1%	41.0%	42.3%	43.4%	43.7%

**P.30 Placed 18 year old applicants from the UK by POLAR3 quintile: 11 days after A level results day**

Placed 18 year old applicants: entry rate (indexed to 100 = Quintile 1)

Applicant Status	POLAR3	2011	2012	2013	2014	2015
Placed	Quintile 1	100	100	100	100	100
	Quintile 2	144	141	141	136	136
	Quintile 3	182	177	174	167	166
	Quintile 4	229	216	211	199	199
	Quintile 5	300	284	273	257	251