

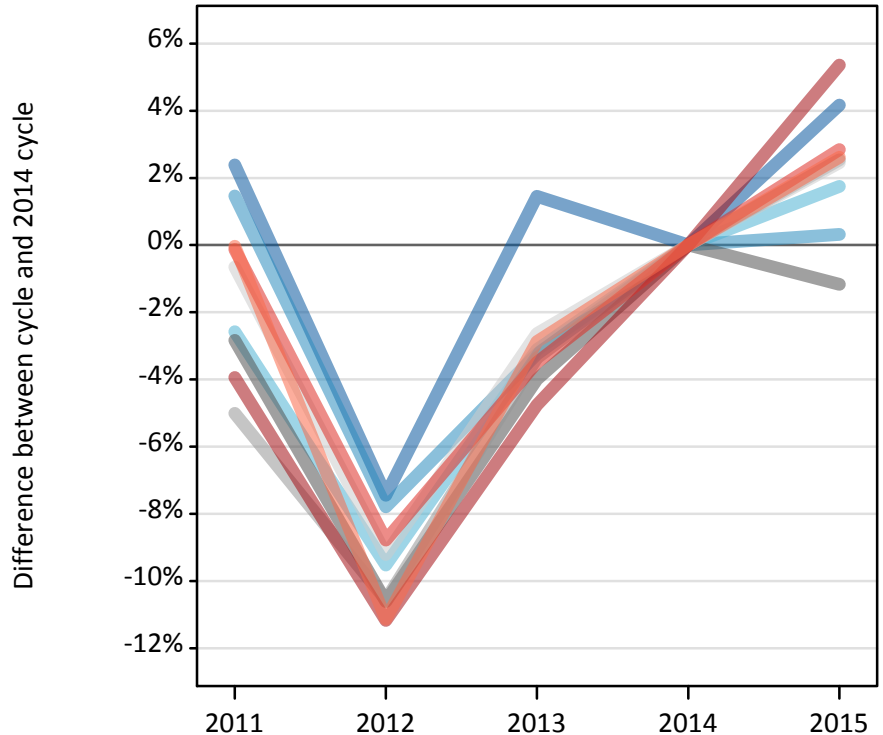
Daily Clearing Analysis: Region

Analysis at 00:05 on Monday 24 August 2015 (11 days after A level results day)

R.1 Placed applicants by region of domicile: 11 days after A level results day

Placed applicants: change relative to 2014 cycle totals

- North East
- North West
- Yorkshire and The Humber
- East Midlands
- West Midlands
- East of England
- London
- South East
- South West



R.2 Placed applicants by region of domicile: 11 days after A level results day

Applicant Status	Domicile	2011	2012	2013	2014	2015
Placed	North East	15,410	13,930	15,270	15,050	15,680
	North West	48,230	43,830	45,990	47,530	47,680
	Yorkshire and The Humber	31,690	29,430	31,520	32,530	33,100
	East Midlands	26,790	24,650	26,470	27,580	27,250
	West Midlands	35,630	33,550	36,250	37,510	38,460
	East of England	36,050	32,950	35,330	36,290	37,180
	London	62,250	57,560	61,720	64,800	68,280
	South East	56,420	51,540	54,520	56,490	58,100
	South West	32,310	28,720	31,390	32,320	33,160
	(England total)	344,780	316,150	338,460	350,100	358,900
	Scotland	27,740	27,800	28,280	29,050	31,890
	Northern Ireland	13,470	12,620	13,990	14,030	13,560
	Wales	17,020	17,610	17,800	18,570	18,900
	UK	403,010	374,180	398,520	411,740	423,250

R.3 Placed applicants by region of domicile: 11 days after A level results day

Placed applicants: change relative to 2014 cycle totals

Applicant Status	Domicile	2011	2012	2013	2014	2015
Placed	North East	2%	-7%	1%	0%	4%
	North West	1%	-8%	-3%	0%	0%
	Yorkshire and The Humber	-3%	-10%	-3%	0%	2%
	East Midlands	-3%	-11%	-4%	0%	-1%
	West Midlands	-5%	-11%	-3%	0%	3%
	East of England	-1%	-9%	-3%	0%	2%
	London	-4%	-11%	-5%	0%	5%
	South East	-0%	-9%	-3%	0%	3%
	South West	-0%	-11%	-3%	0%	3%
	(England total)	-2%	-10%	-3%	0%	3%
	Scotland	-5%	-4%	-3%	0%	10%
	Northern Ireland	-4%	-10%	-0%	0%	-3%
	Wales	-8%	-5%	-4%	0%	2%
	UK	-2%	-9%	-3%	0%	3%

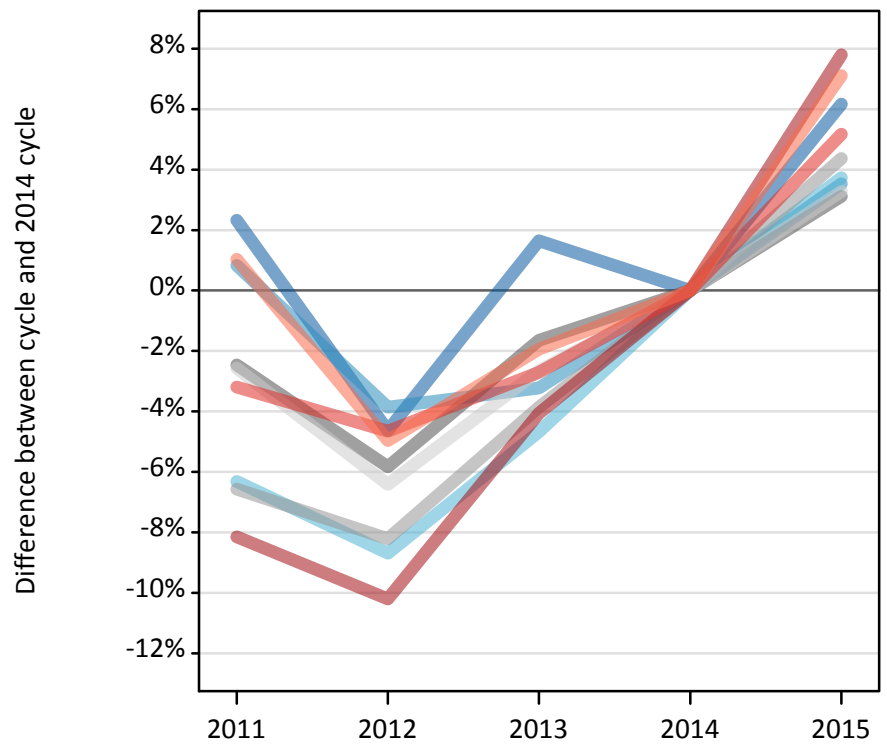
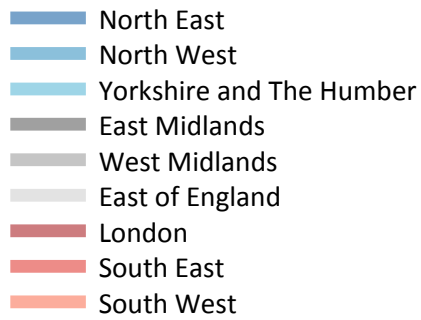
R.4 Placed applicants by region of domicile: 11 days after A level results day

Placed applicants: absolute change relative to 2014 cycle totals

Applicant Status	Domicile	2011	2012	2013	2014	2015
Placed	North East	360	-1,120	220	0	630
	North West	700	-3,700	-1,540	0	150
	Yorkshire and The Humber	-840	-3,100	-1,010	0	570
	East Midlands	-780	-2,930	-1,100	0	-320
	West Midlands	-1,880	-3,960	-1,260	0	950
	East of England	-240	-3,340	-960	0	890
	London	-2,550	-7,240	-3,090	0	3,480
	South East	-70	-4,960	-1,970	0	1,610
	South West	-10	-3,600	-930	0	850
	(England total)	-5,320	-33,950	-11,640	0	8,800
	Scotland	-1,310	-1,250	-770	0	2,840
	Northern Ireland	-550	-1,410	-40	0	-470
	Wales	-1,550	-950	-770	0	330
	UK	-8,740	-37,560	-13,220	0	11,510

R.5 Placed 18 year old applicants by region of domicile: 11 days after A level results day

Placed 18 year old applicants: change relative to 2014 cycle totals



R.6 Placed 18 year old applicants by region of domicile: 11 days after A level results day

Applicant Status	Domicile	2011	2012	2013	2014	2015
Placed	North East	8,100	7,550	8,050	7,920	8,400
	North West	26,370	25,140	25,310	26,150	27,070
	Yorkshire and The Humber	16,910	16,480	17,200	18,050	18,720
	East Midlands	14,680	14,170	14,800	15,050	15,520
	West Midlands	18,900	18,560	19,440	20,220	21,110
	East of England	20,870	20,040	20,850	21,420	22,120
	London	29,860	29,190	31,180	32,510	35,040
	South East	31,060	30,590	31,210	32,080	33,740
	South West	16,400	15,420	15,910	16,230	17,380
	(England total)	183,130	177,140	183,960	189,620	199,100
	Scotland	13,920	14,030	14,140	14,300	14,390
	Northern Ireland	8,570	8,160	8,690	8,500	8,280
	Wales	9,380	9,670	9,600	9,990	10,420
	UK	215,000	209,010	216,390	222,410	232,190

R.7 Placed 18 year old applicants by region of domicile: 11 days after A level results day

Placed 18 year old applicants: change relative to 2014 cycle totals

Applicant Status	Domicile	2011	2012	2013	2014	2015
Placed	North East	2%	-5%	2%	0%	6%
	North West	1%	-4%	-3%	0%	4%
	Yorkshire and The Humber	-6%	-9%	-5%	0%	4%
	East Midlands	-2%	-6%	-2%	0%	3%
	West Midlands	-7%	-8%	-4%	0%	4%
	East of England	-3%	-6%	-3%	0%	3%
	London	-8%	-10%	-4%	0%	8%
	South East	-3%	-5%	-3%	0%	5%
	South West	1%	-5%	-2%	0%	7%
	(England total)	-3%	-7%	-3%	0%	5%
	Scotland	-3%	-2%	-1%	0%	1%
	Northern Ireland	1%	-4%	2%	0%	-3%
	Wales	-6%	-3%	-4%	0%	4%
	UK	-3%	-6%	-3%	0%	4%

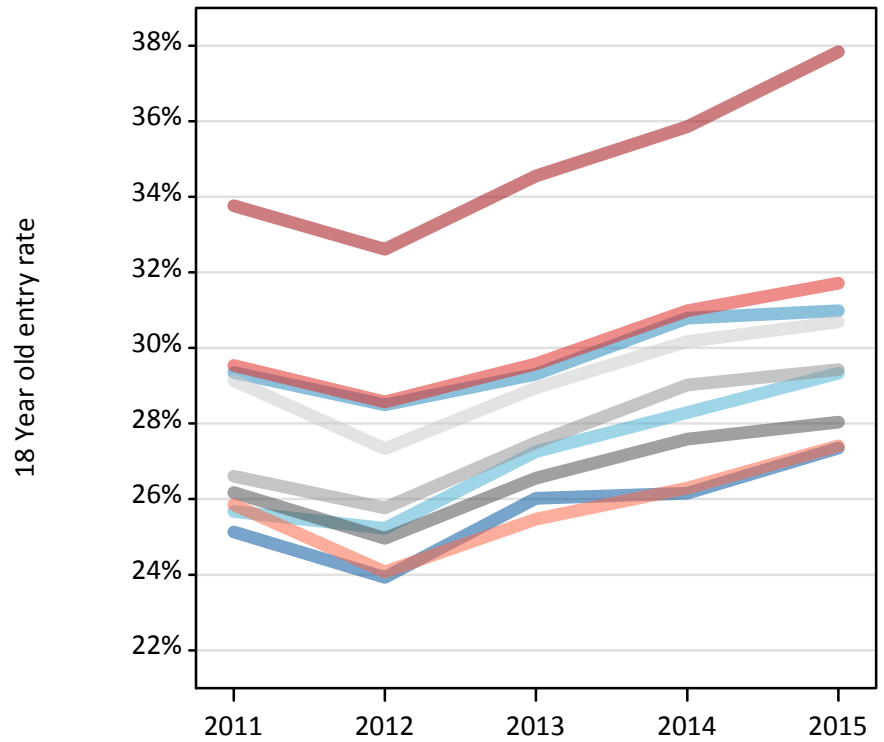
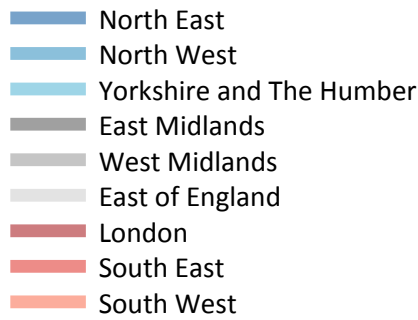
R.8 Placed 18 year old applicants by region of domicile: 11 days after A level results day

Placed 18 year old applicants: absolute change relative to 2014 cycle totals

Applicant Status	Domicile	2011	2012	2013	2014	2015
Placed	North East	180	-370	130	0	490
	North West	220	-1,010	-840	0	920
	Yorkshire and The Humber	-1,140	-1,570	-840	0	670
	East Midlands	-370	-880	-250	0	470
	West Midlands	-1,330	-1,660	-780	0	880
	East of England	-550	-1,370	-570	0	700
	London	-2,650	-3,320	-1,320	0	2,530
	South East	-1,020	-1,490	-870	0	1,660
	South West	170	-810	-320	0	1,150
	(England total)	-6,490	-12,470	-5,660	0	9,490
	Scotland	-380	-270	-160	0	90
	Northern Ireland	70	-340	190	0	-220
	Wales	-610	-320	-400	0	430
	UK	-7,410	-13,400	-6,020	0	9,780

R.9 Placed 18 year old applicants by region of domicile: 11 days after A level results day

Placed 18 year old applicants: entry rate



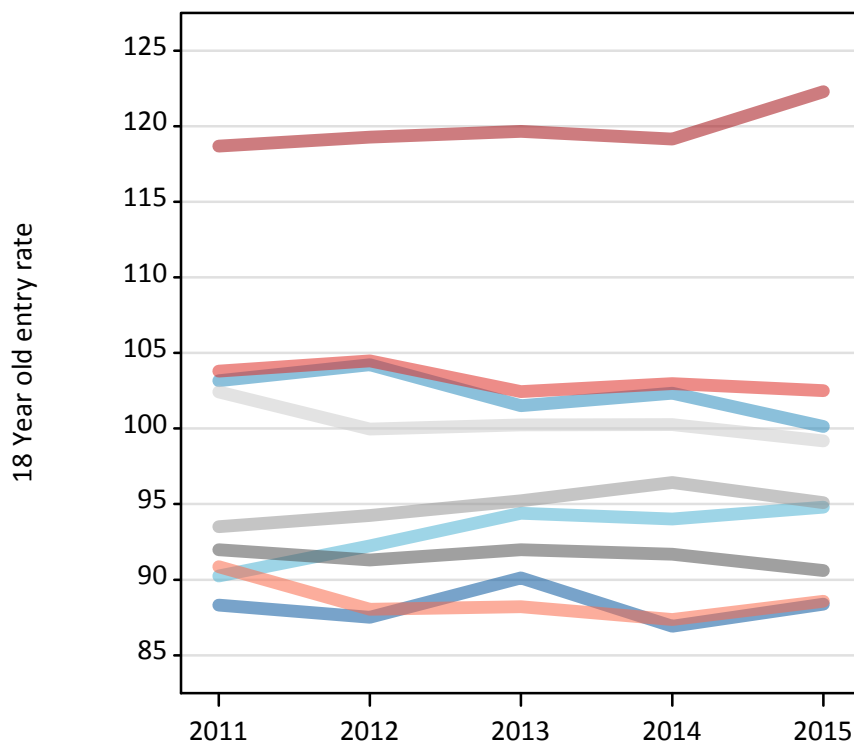
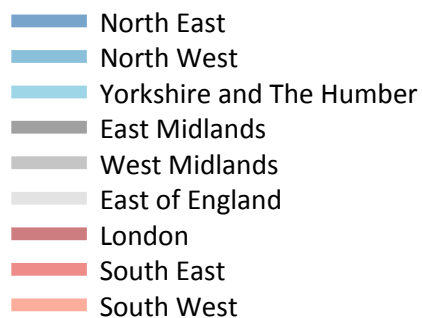
R.10 Placed 18 year old applicants by region of domicile: 11 days after A level results day

Placed 18 year old applicants: entry rate

Applicant Status	Domicile	2011	2012	2013	2014	2015
Placed	North East	25.1%	23.9%	26.0%	26.2%	27.3%
	North West	29.3%	28.5%	29.3%	30.8%	31.0%
	Yorkshire and The Humber	25.7%	25.2%	27.3%	28.3%	29.3%
	East Midlands	26.2%	25.0%	26.6%	27.6%	28.0%
	West Midlands	26.6%	25.8%	27.5%	29.0%	29.4%
	East of England	29.1%	27.3%	28.9%	30.2%	30.7%
	London	33.8%	32.6%	34.6%	35.9%	37.8%
	South East	29.5%	28.6%	29.6%	31.0%	31.7%
	South West	25.9%	24.1%	25.5%	26.3%	27.4%
	(England total)	28.5%	27.3%	28.9%	30.1%	30.9%
	Scotland	22.1%	22.7%	23.0%	23.3%	23.9%
	Northern Ireland	34.3%	32.5%	35.5%	35.0%	33.3%
	Wales	24.3%	25.1%	25.4%	26.6%	27.7%
	UK	27.9%	27.0%	28.4%	29.5%	30.3%

R.11 Placed 18 year old applicants by region of domicile: 11 days after A level results day

Placed 18 year old applicants: entry rates (indexed to 100 = England)



R.12 Placed 18 year old applicants by region of domicile: 11 days after A level results day

Placed 18 year old applicants: entry rate (indexed to 100 = England)

Applicant Status	Domicile	2011	2012	2013	2014	2015
Placed	North East	88	88	90	87	88
	North West	103	104	102	102	100
	Yorkshire and The Humber	90	92	94	94	95
	East Midlands	92	91	92	92	91
	West Midlands	94	94	95	96	95
	East of England	102	100	100	100	99
	London	119	119	120	119	122
	South East	104	104	102	103	102
	South West	91	88	88	87	89
	(England total)	100	100	100	100	100