

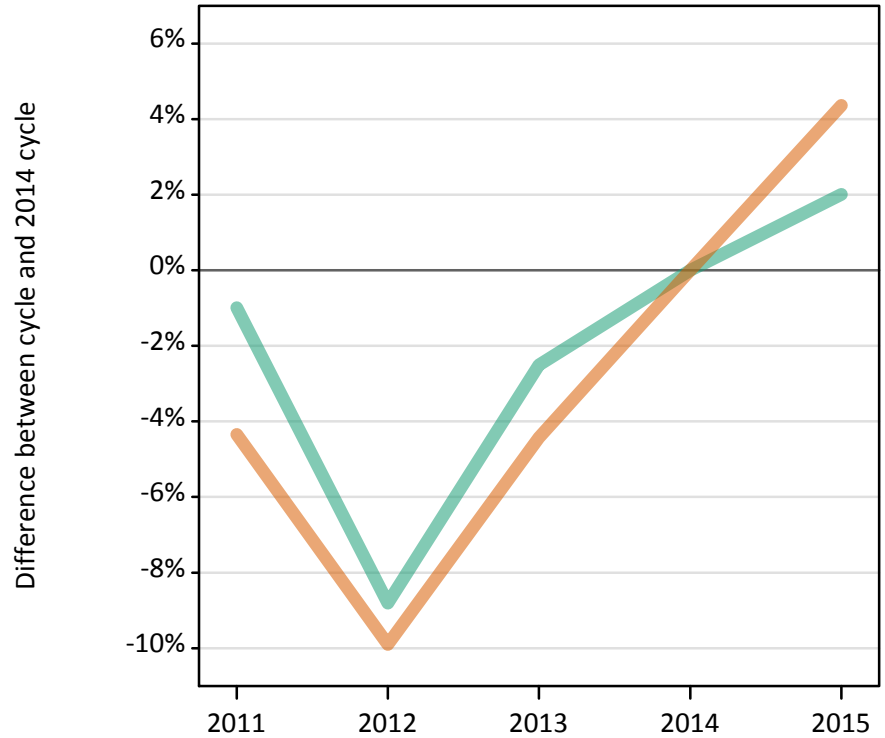
Daily Clearing Analysis: Sex

Analysis at 00:05 on Monday 24 August 2015 (11 days after A level results day)

S.1 Placed applicants from all domiciles by sex: 11 days after A level results day

Placed applicants: change relative to 2014 cycle totals

Men
Women



S.2 Placed applicants from all domiciles by sex: 11 days after A level results day

Applicant Status	Sex	2011	2012	2013	2014	2015
Placed	Men	204,910	188,720	201,770	206,950	211,110
	Women	250,440	235,910	250,240	261,820	273,240
	All	455,350	424,630	452,010	468,780	484,350

S.3 Placed applicants from all domiciles by sex: 11 days after A level results day

Placed applicants: change relative to 2014 cycle totals

Applicant Status	Sex	2011	2012	2013	2014	2015
Placed	Men	-1%	-9%	-3%	0%	2%
	Women	-4%	-10%	-4%	0%	4%
	All	-3%	-9%	-4%	0%	3%

S.4 Placed applicants from all domiciles by sex: 11 days after A level results day

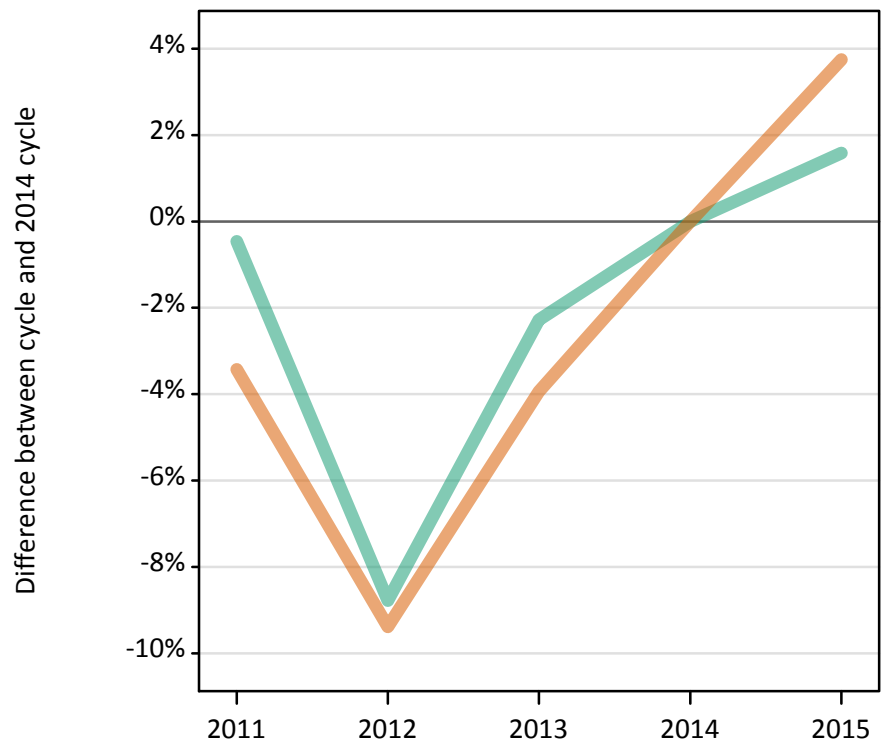
Placed applicants: absolute change relative to 2014 cycle totals

Applicant Status	Sex	2011	2012	2013	2014	2015
Placed	Men	-2,040	-18,230	-5,180	0	4,150
	Women	-11,380	-25,910	-11,590	0	11,420
	All	-13,420	-44,150	-16,770	0	15,570

S.5 Placed applicants from the UK by sex: 11 days after A level results day

Placed applicants: change relative to 2014 cycle totals

Men
Women



S.6 Placed applicants from the UK by sex: 11 days after A level results day

Applicant Status	Sex	2011	2012	2013	2014	2015
Placed	Men	180,410	165,330	177,110	181,250	184,110
	Women	222,600	208,860	221,410	230,490	239,140
	All	403,010	374,180	398,520	411,740	423,250

S.7 Placed applicants from the UK by sex: 11 days after A level results day

Placed applicants: change relative to 2014 cycle totals

Applicant Status	Sex	2011	2012	2013	2014	2015
Placed	Men	-0%	-9%	-2%	0%	2%
	Women	-3%	-9%	-4%	0%	4%
	All	-2%	-9%	-3%	0%	3%

S.8 Placed applicants from the UK by sex: 11 days after A level results day

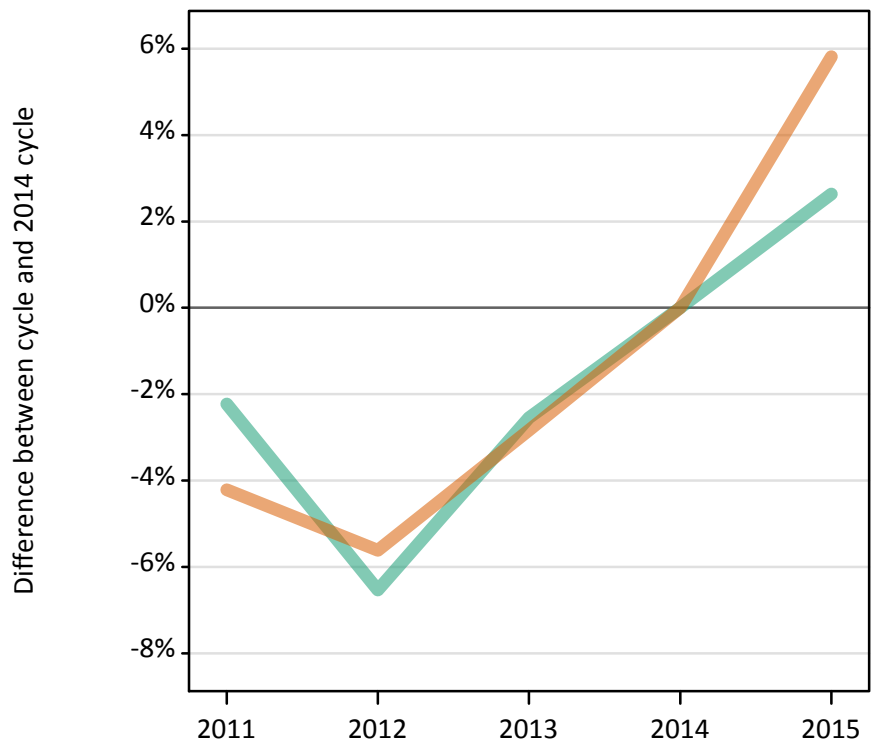
Placed applicants: absolute change relative to 2014 cycle totals

Applicant Status	Sex	2011	2012	2013	2014	2015
Placed	Men	-840	-15,920	-4,130	0	2,860
	Women	-7,890	-21,640	-9,090	0	8,640
	All	-8,740	-37,560	-13,220	0	11,510

S.9 Placed 18 year old applicants from the UK by sex: 11 days after A level results day

Placed 18 year old applicants: change relative to 2014 cycle totals

Men
Women



S.10 Placed 18 year old applicants from the UK by sex: 11 days after A level results day

Applicant Status	Sex	2011	2012	2013	2014	2015
Placed	Men	96,640	92,390	96,330	98,850	101,450
	Women	118,360	116,620	120,060	123,560	130,740
	All	215,000	209,010	216,390	222,410	232,190

S.11 Placed 18 year old applicants from the UK by sex: 11 days after A level results day

Placed 18 year old applicants: change relative to 2014 cycle totals

Applicant Status	Sex	2011	2012	2013	2014	2015
Placed	Men	-2%	-7%	-3%	0%	3%
	Women	-4%	-6%	-3%	0%	6%
	All	-3%	-6%	-3%	0%	4%

S.12 Placed 18 year old applicants from the UK by sex: 11 days after A level results day

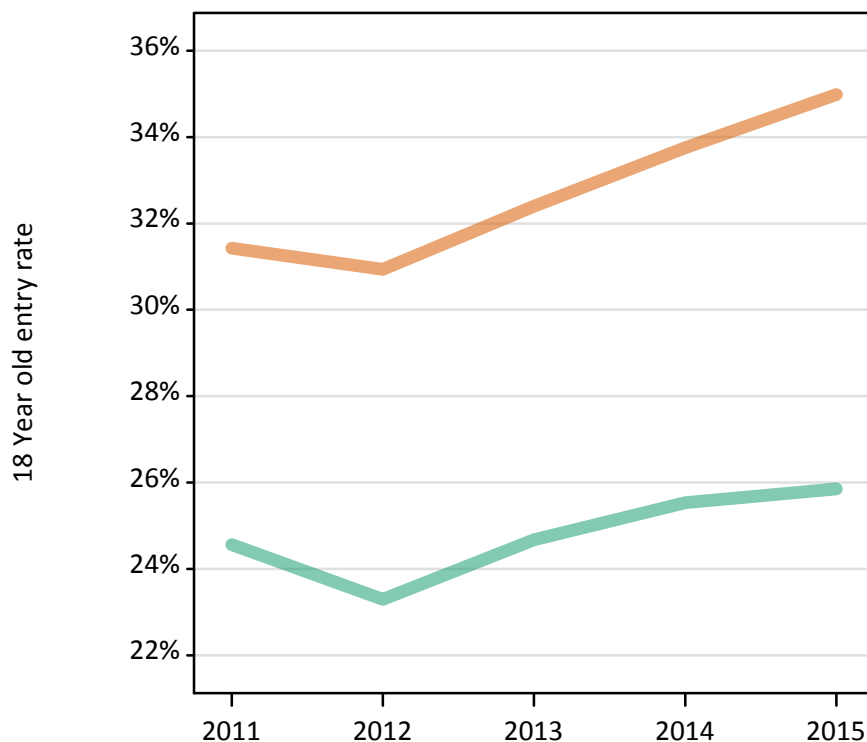
Placed 18 year old applicants: absolute change relative to 2014 cycle totals

Applicant Status	Sex	2011	2012	2013	2014	2015
Placed	Men	-2,200	-6,460	-2,520	0	2,600
	Women	-5,210	-6,940	-3,500	0	7,180
	All	-7,410	-13,400	-6,020	0	9,780

S.13 Placed 18 year old applicants from the UK by sex: 11 days after A level results day

Placed 18 year old applicants: entry rate

Men
Women



S.14 Placed 18 year old applicants from the UK by sex: 11 days after A level results day

Placed 18 year old applicants: entry rate

Applicant Status	Sex	2011	2012	2013	2014	2015
Placed	Men	24.6%	23.3%	24.7%	25.5%	25.9%
	Women	31.4%	30.9%	32.4%	33.8%	35.0%
	All	27.9%	27.0%	28.4%	29.5%	30.3%

S.15 Placed 18 year old applicants from the UK by sex: 11 days after A level results day

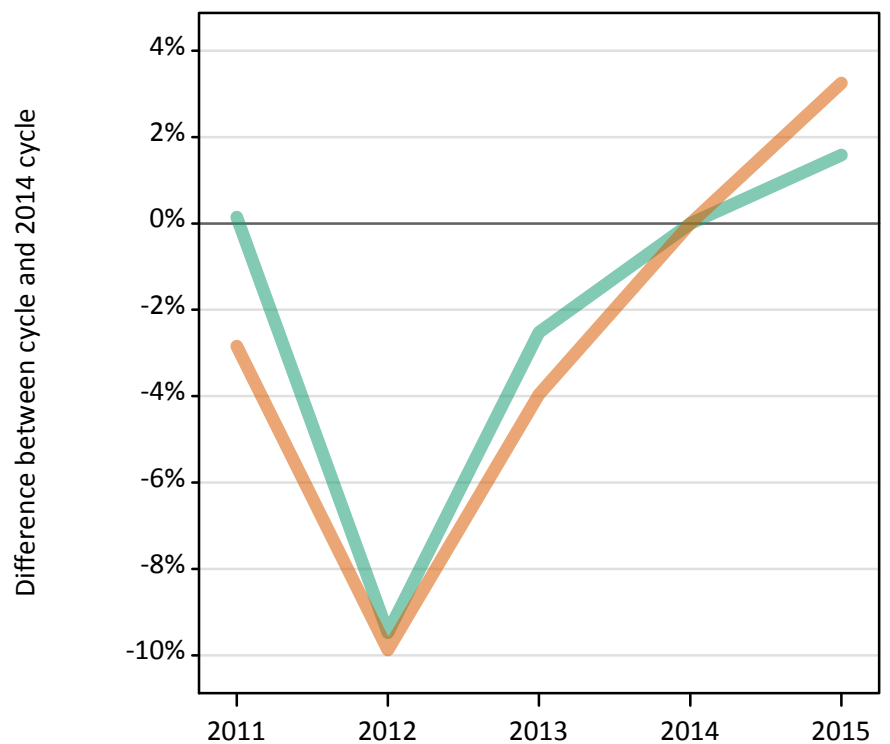
Placed 18 year old applicants: entry rate (indexed to 100 = Men)

Applicant Status	Sex	2011	2012	2013	2014	2015
Placed	Men	100	100	100	100	100
	Women	128	133	131	132	135

S.16 Placed applicants from England by sex: 11 days after A level results day

Placed applicants: change relative to 2014 cycle totals

Men
Women



S.17 Placed applicants from England by sex: 11 days after A level results day

Applicant Status	Sex	2011	2012	2013	2014	2015
Placed	Men	155,160	140,250	151,020	154,930	157,370
	Women	189,620	175,900	187,440	195,170	201,520
	All	344,780	316,150	338,460	350,100	358,900

S.18 Placed applicants from England by sex: 11 days after A level results day

Placed applicants: change relative to 2014 cycle totals

Applicant Status	Sex	2011	2012	2013	2014	2015
Placed	Men	0%	-9%	-3%	0%	2%
	Women	-3%	-10%	-4%	0%	3%
	All	-2%	-10%	-3%	0%	3%

S.19 Placed applicants from England by sex: 11 days after A level results day

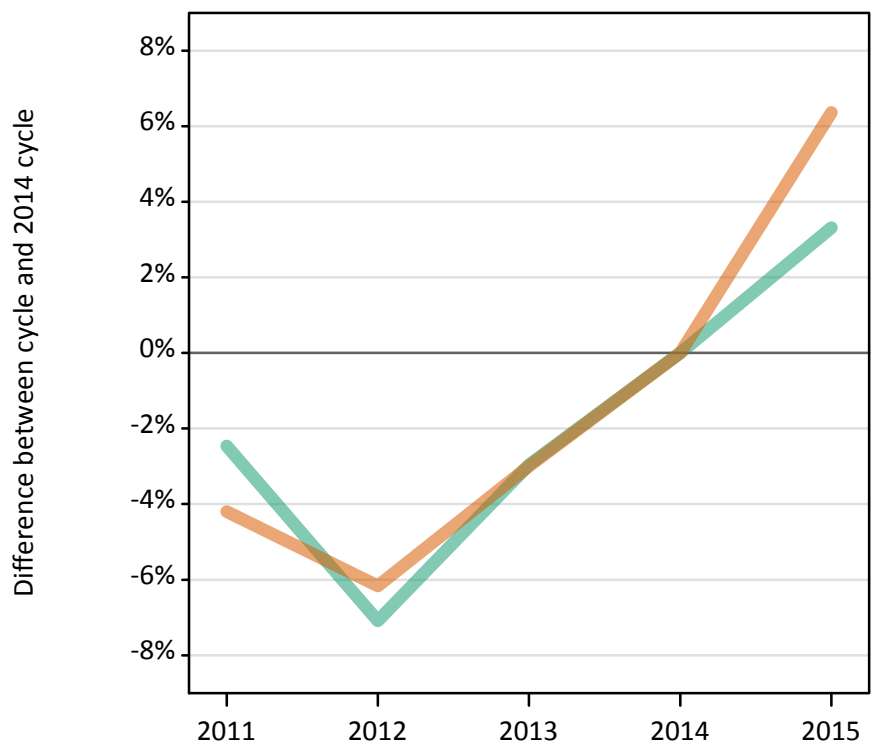
Placed applicants: absolute change relative to 2014 cycle totals

Applicant Status	Sex	2011	2012	2013	2014	2015
Placed	Men	230	-14,680	-3,910	0	2,450
	Women	-5,550	-19,270	-7,730	0	6,350
	All	-5,320	-33,950	-11,640	0	8,800

S.20 Placed 18 year old applicants from England by sex: 11 days after A level results day

Placed 18 year old applicants: change relative to 2014 cycle totals

Men
Women



S.21 Placed 18 year old applicants from England by sex: 11 days after A level results day

Applicant Status	Sex	2011	2012	2013	2014	2015
Placed	Men	82,710	78,780	82,280	84,790	87,610
	Women	100,420	98,360	101,680	104,820	111,500
	All	183,130	177,140	183,960	189,620	199,100

S.22 Placed 18 year old applicants from England by sex: 11 days after A level results day

Placed 18 year old applicants: change relative to 2014 cycle totals

Applicant Status	Sex	2011	2012	2013	2014	2015
Placed	Men	-2%	-7%	-3%	0%	3%
	Women	-4%	-6%	-3%	0%	6%
	All	-3%	-7%	-3%	0%	5%

S.23 Placed 18 year old applicants from England by sex: 11 days after A level results day

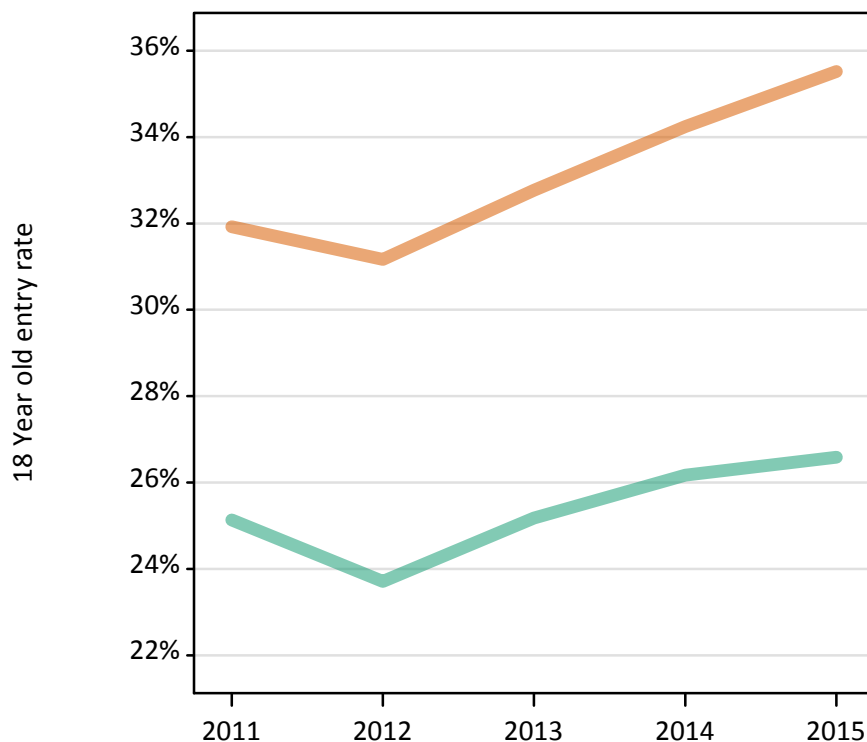
Placed 18 year old applicants: absolute change relative to 2014 cycle totals

Applicant Status	Sex	2011	2012	2013	2014	2015
Placed	Men	-2,090	-6,010	-2,520	0	2,810
	Women	-4,410	-6,460	-3,140	0	6,670
	All	-6,490	-12,470	-5,660	0	9,490

S.24 Placed 18 year old applicants from England by sex: 11 days after A level results day

Placed 18 year old applicants: entry rate

Men
Women



S.25 Placed 18 year old applicants from England by sex: 11 days after A level results day

Placed 18 year old applicants: entry rate

Applicant Status	Sex	2011	2012	2013	2014	2015
Placed	Men	25.1%	23.7%	25.2%	26.2%	26.6%
	Women	31.9%	31.2%	32.8%	34.2%	35.5%
	All	28.5%	27.3%	28.9%	30.1%	30.9%

S.26 Placed 18 year old applicants from England by sex: 11 days after A level results day

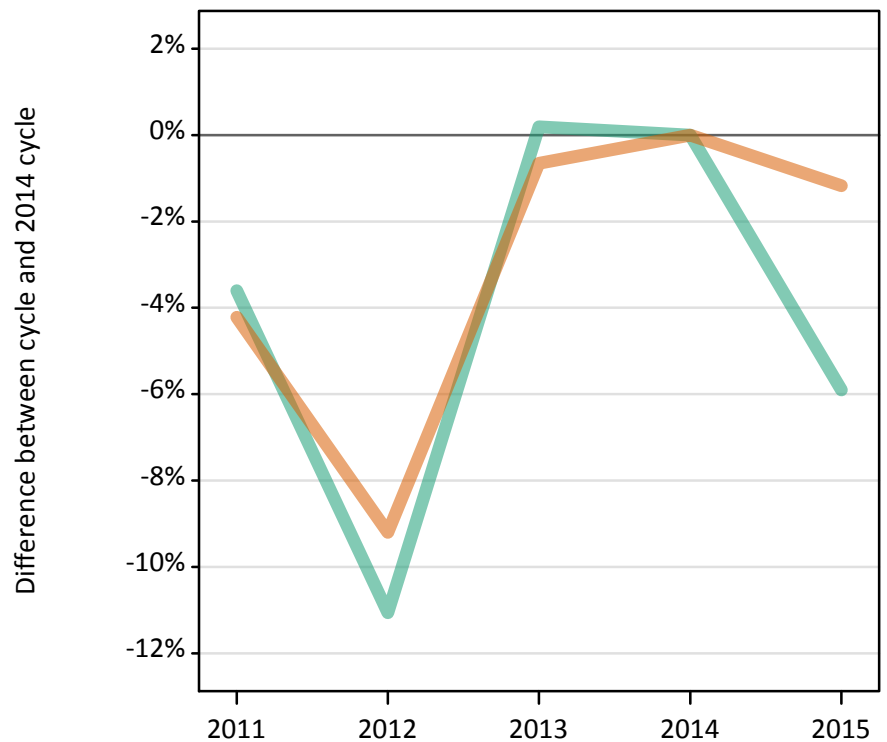
Placed 18 year old applicants: entry rate (indexed to 100 = Men)

Applicant Status	Sex	2011	2012	2013	2014	2015
Placed	Men	100	100	100	100	100
	Women	127	131	130	131	134

S.27 Placed applicants from Northern Ireland by sex: 11 days after A level results day

Placed applicants: change relative to 2014 cycle totals

Men
Women



S.28 Placed applicants from Northern Ireland by sex: 11 days after A level results day

Applicant Status	Sex	2011	2012	2013	2014	2015
Placed	Men	6,130	5,650	6,370	6,350	5,980
	Women	7,350	6,970	7,620	7,670	7,580
	All	13,470	12,620	13,990	14,030	13,560

S.29 Placed applicants from Northern Ireland by sex: 11 days after A level results day

Placed applicants: change relative to 2014 cycle totals

Applicant Status	Sex	2011	2012	2013	2014	2015
Placed	Men	-4%	-11%	0%	0%	-6%
	Women	-4%	-9%	-1%	0%	-1%
	All	-4%	-10%	-0%	0%	-3%

S.30 Placed applicants from Northern Ireland by sex: 11 days after A level results day

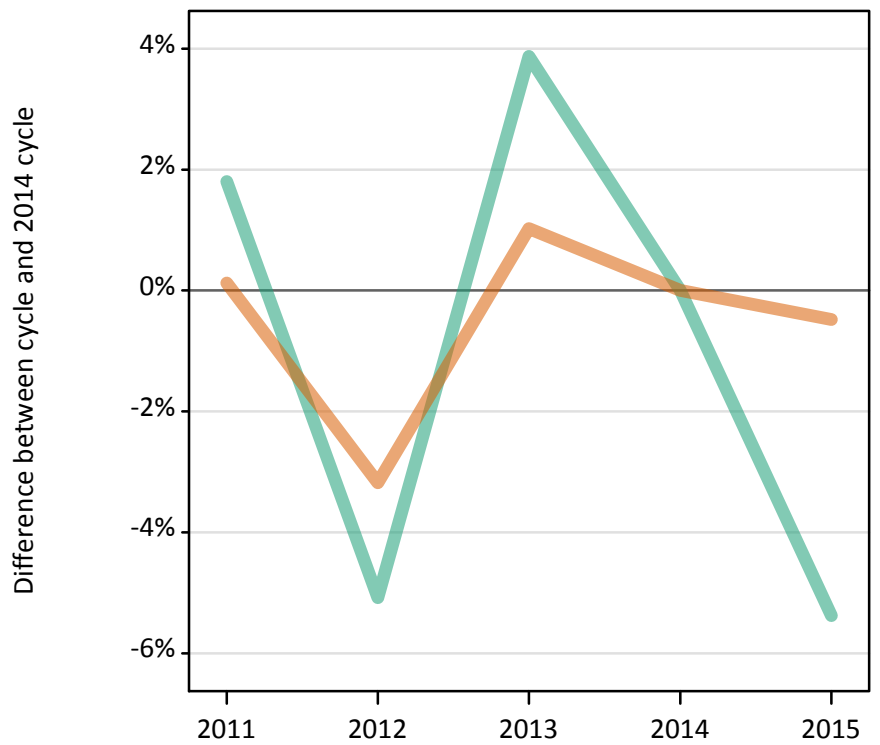
Placed applicants: absolute change relative to 2014 cycle totals

Applicant Status	Sex	2011	2012	2013	2014	2015
Placed	Men	-230	-700	10	0	-380
	Women	-320	-710	-50	0	-90
	All	-550	-1,410	-40	0	-470

S.31 Placed 18 year old applicants from Northern Ireland by sex: 11 days after A level results day

Placed 18 year old applicants: change relative to 2014 cycle totals

Men
Women



S.32 Placed 18 year old applicants from Northern Ireland by sex: 11 days after A level results day

Applicant Status	Sex	2011	2012	2013	2014	2015
Placed	Men	3,790	3,530	3,860	3,720	3,520
	Women	4,780	4,630	4,830	4,780	4,760
	All	8,570	8,160	8,690	8,500	8,280

S.33 Placed 18 year old applicants from Northern Ireland by sex: 11 days after A level results day

Placed 18 year old applicants: change relative to 2014 cycle totals

Applicant Status	Sex	2011	2012	2013	2014	2015
Placed	Men	2%	-5%	4%	0%	-5%
	Women	0%	-3%	1%	0%	-0%
	All	1%	-4%	2%	0%	-3%

S.34 Placed 18 year old applicants from Northern Ireland by sex: 11 days after A level results day

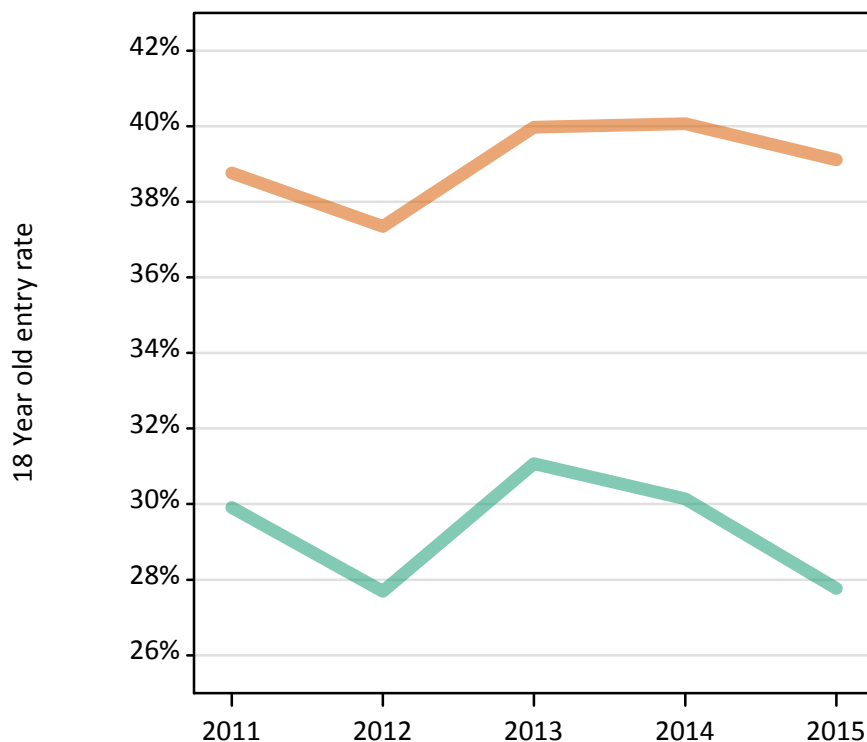
Placed 18 year old applicants: absolute change relative to 2014 cycle totals

Applicant Status	Sex	2011	2012	2013	2014	2015
Placed	Men	70	-190	140	0	-200
	Women	10	-150	50	0	-20
	All	70	-340	190	0	-220

S.35 Placed 18 year old applicants from Northern Ireland by sex: 11 days after A level results day

Placed 18 year old applicants: entry rate

Men
Women



S.36 Placed 18 year old applicants from Northern Ireland by sex: 11 days after A level results day

Placed 18 year old applicants: entry rate

Applicant Status	Sex	2011	2012	2013	2014	2015
Placed	Men	29.9%	27.7%	31.1%	30.1%	27.8%
	Women	38.8%	37.4%	40.0%	40.1%	39.1%
	All	34.3%	32.5%	35.5%	35.0%	33.3%

S.37 Placed 18 year old applicants from Northern Ireland by sex: 11 days after A level results day

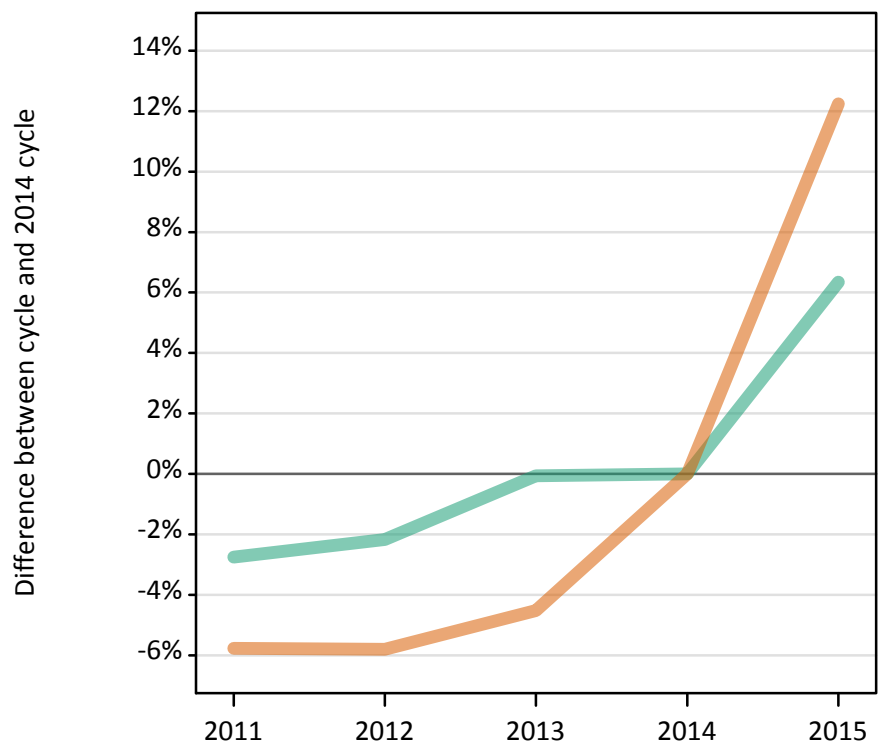
Placed 18 year old applicants: entry rate (indexed to 100 = Men)

Applicant Status	Sex	2011	2012	2013	2014	2015
Placed	Men	100	100	100	100	100
	Women	130	135	129	133	141

S.38 Placed applicants from Scotland by sex: 11 days after A level results day

Placed applicants: change relative to 2014 cycle totals

Men
Women



S.39 Placed applicants from Scotland by sex: 11 days after A level results day

Applicant Status	Sex	2011	2012	2013	2014	2015
Placed	Men	11,770	11,840	12,090	12,100	12,870
	Women	15,970	15,970	16,180	16,950	19,030
	All	27,740	27,800	28,280	29,050	31,890

S.40 Placed applicants from Scotland by sex: 11 days after A level results day

Placed applicants: change relative to 2014 cycle totals

Applicant Status	Sex	2011	2012	2013	2014	2015
Placed	Men	-3%	-2%	-0%	0%	6%
	Women	-6%	-6%	-5%	0%	12%
	All	-5%	-4%	-3%	0%	10%

S.41 Placed applicants from Scotland by sex: 11 days after A level results day

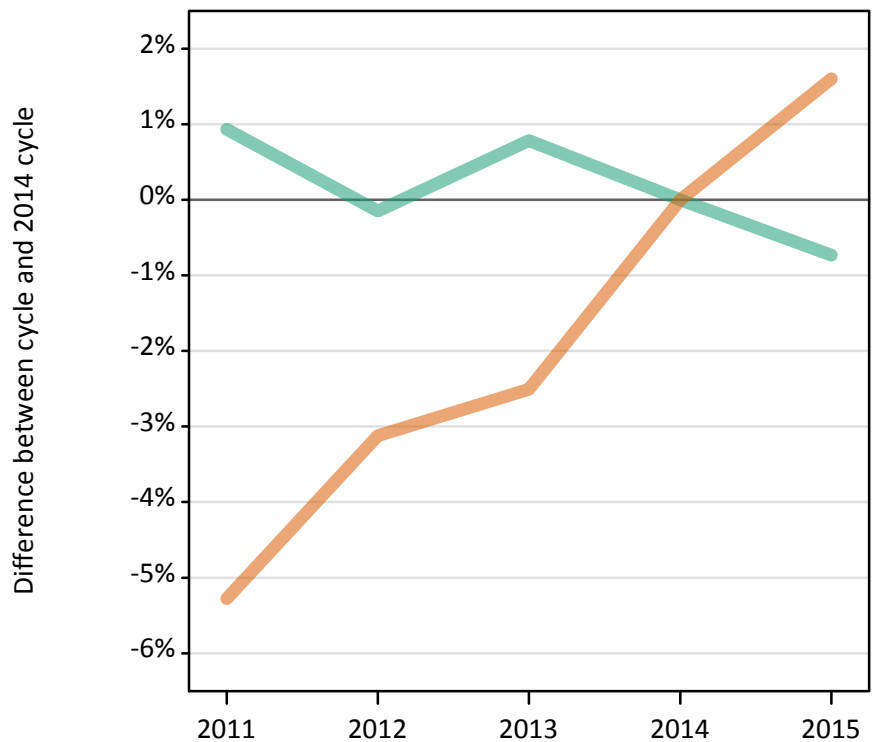
Placed applicants: absolute change relative to 2014 cycle totals

Applicant Status	Sex	2011	2012	2013	2014	2015
Placed	Men	-330	-260	-10	0	770
	Women	-980	-980	-770	0	2,080
	All	-1,310	-1,250	-770	0	2,840

S.42 Placed 18 year old applicants from Scotland by sex: 11 days after A level results day

Placed 18 year old applicants: change relative to 2014 cycle totals

Men
Women



S.43 Placed 18 year old applicants from Scotland by sex: 11 days after A level results day

Applicant Status	Sex	2011	2012	2013	2014	2015
Placed	Men	6,060	6,000	6,050	6,010	5,960
	Women	7,860	8,040	8,090	8,300	8,430
	All	13,920	14,030	14,140	14,300	14,390

S.44 Placed 18 year old applicants from Scotland by sex: 11 days after A level results day

Placed 18 year old applicants: change relative to 2014 cycle totals

Applicant Status	Sex	2011	2012	2013	2014	2015
Placed	Men	1%	-0%	1%	0%	-1%
	Women	-5%	-3%	-3%	0%	2%
	All	-3%	-2%	-1%	0%	1%

S.45 Placed 18 year old applicants from Scotland by sex: 11 days after A level results day

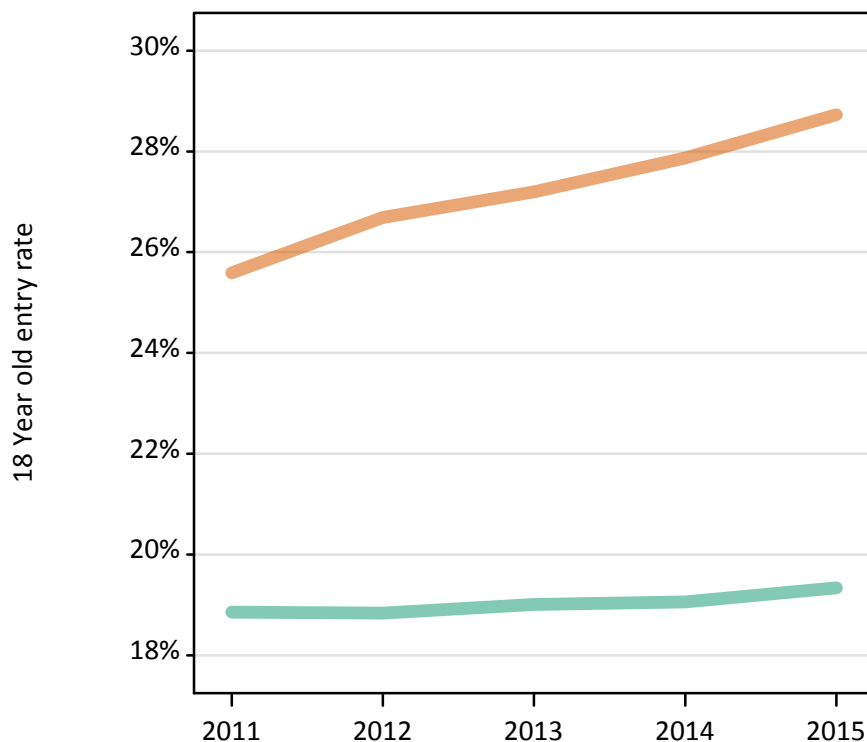
Placed 18 year old applicants: absolute change relative to 2014 cycle totals

Applicant Status	Sex	2011	2012	2013	2014	2015
Placed	Men	60	-10	50	0	-40
	Women	-440	-260	-210	0	130
	All	-380	-270	-160	0	90

S.46 Placed 18 year old applicants from Scotland by sex: 11 days after A level results day

Placed 18 year old applicants: entry rate

Men
Women



S.47 Placed 18 year old applicants from Scotland by sex: 11 days after A level results day

Placed 18 year old applicants: entry rate

Applicant Status	Sex	2011	2012	2013	2014	2015
Placed	Men	18.9%	18.8%	19.0%	19.1%	19.3%
	Women	25.6%	26.7%	27.2%	27.9%	28.7%
	All	22.1%	22.7%	23.0%	23.3%	23.9%

S.48 Placed 18 year old applicants from Scotland by sex: 11 days after A level results day

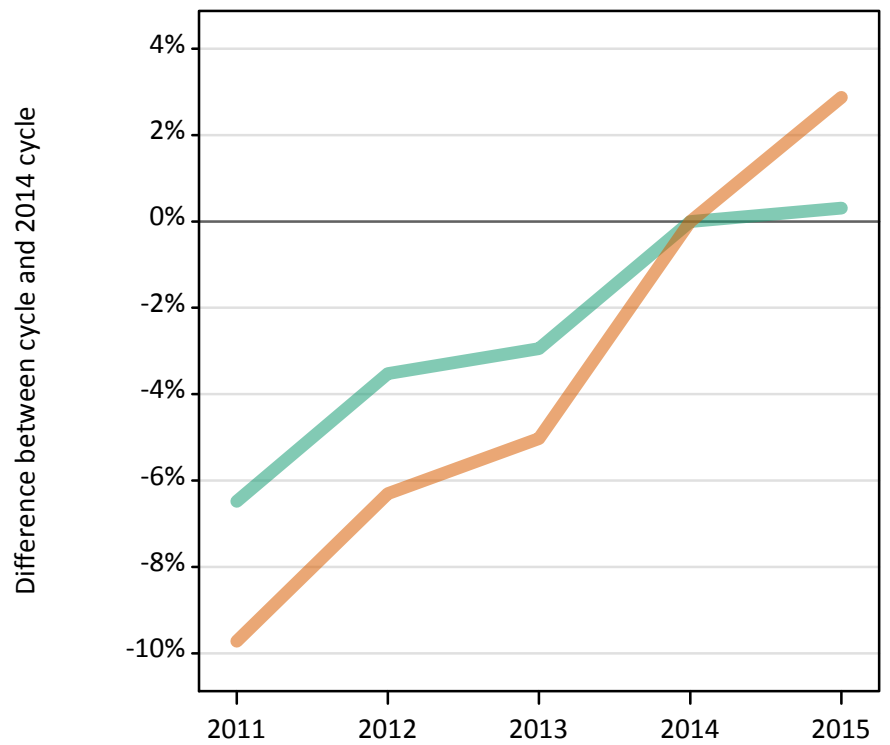
Placed 18 year old applicants: entry rate (indexed to 100 = Men)

Applicant Status	Sex	2011	2012	2013	2014	2015
Placed	Men	100	100	100	100	100
	Women	136	142	143	146	149

S.49 Placed applicants from Wales by sex: 11 days after A level results day

Placed applicants: change relative to 2014 cycle totals

Men
Women



S.50 Placed applicants from Wales by sex: 11 days after A level results day

Applicant Status	Sex	2011	2012	2013	2014	2015
Placed	Men	7,360	7,590	7,640	7,870	7,890
	Women	9,660	10,020	10,160	10,700	11,010
	All	17,020	17,610	17,800	18,570	18,900

S.51 Placed applicants from Wales by sex: 11 days after A level results day

Placed applicants: change relative to 2014 cycle totals

Applicant Status	Sex	2011	2012	2013	2014	2015
Placed	Men	-6%	-4%	-3%	0%	0%
	Women	-10%	-6%	-5%	0%	3%
	All	-8%	-5%	-4%	0%	2%

S.52 Placed applicants from Wales by sex: 11 days after A level results day

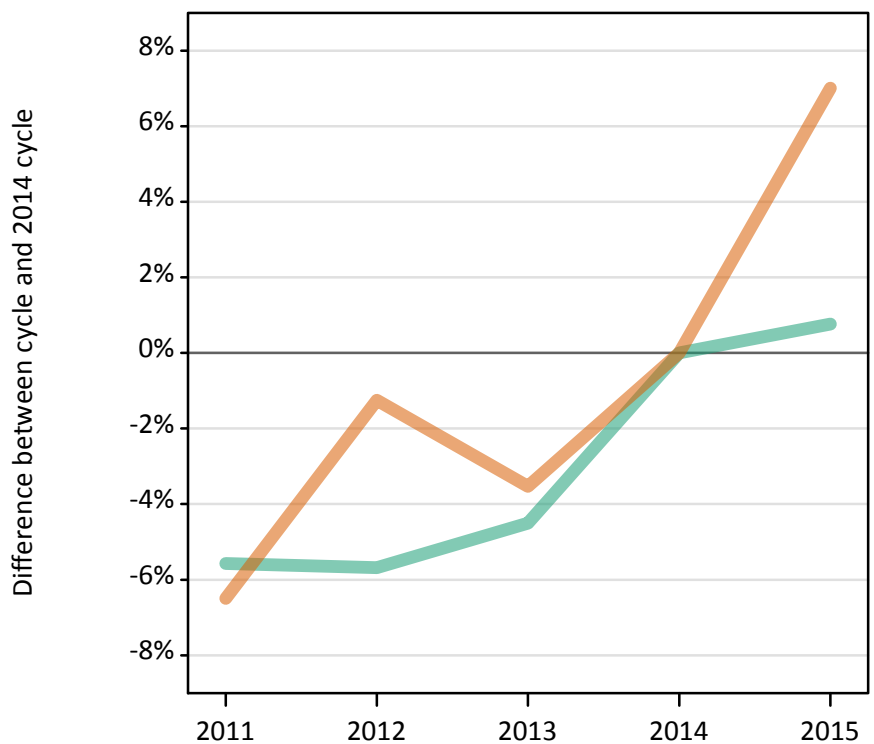
Placed applicants: absolute change relative to 2014 cycle totals

Applicant Status	Sex	2011	2012	2013	2014	2015
Placed	Men	-510	-280	-230	0	20
	Women	-1,040	-670	-540	0	310
	All	-1,550	-950	-770	0	330

S.53 Placed 18 year old applicants from Wales by sex: 11 days after A level results day

Placed 18 year old applicants: change relative to 2014 cycle totals

Men
Women



S.54 Placed 18 year old applicants from Wales by sex: 11 days after A level results day

Applicant Status	Sex	2011	2012	2013	2014	2015
Placed	Men	4,090	4,080	4,130	4,330	4,360
	Women	5,300	5,590	5,460	5,660	6,060
	All	9,380	9,670	9,600	9,990	10,420

S.55 Placed 18 year old applicants from Wales by sex: 11 days after A level results day

Placed 18 year old applicants: change relative to 2014 cycle totals

Applicant Status	Sex	2011	2012	2013	2014	2015
Placed	Men	-6%	-6%	-5%	0%	1%
	Women	-6%	-1%	-4%	0%	7%
	All	-6%	-3%	-4%	0%	4%

S.56 Placed 18 year old applicants from Wales by sex: 11 days after A level results day

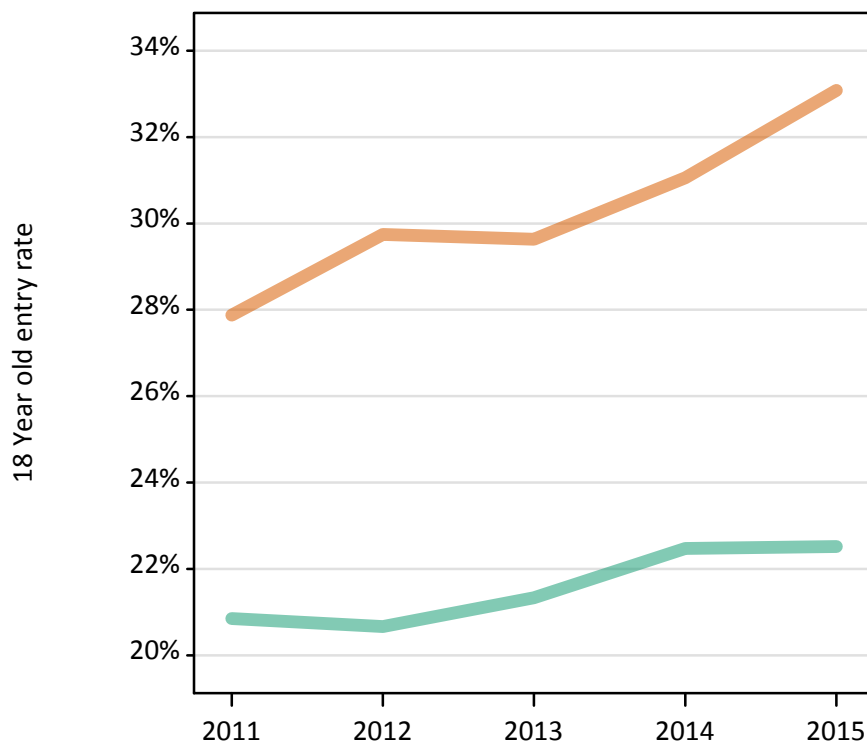
Placed 18 year old applicants: absolute change relative to 2014 cycle totals

Applicant Status	Sex	2011	2012	2013	2014	2015
Placed	Men	-240	-250	-200	0	30
	Women	-370	-70	-200	0	400
	All	-610	-320	-400	0	430

S.57 Placed 18 year old applicants from Wales by sex: 11 days after A level results day

Placed 18 year old applicants: entry rate

Men
Women



S.58 Placed 18 year old applicants from Wales by sex: 11 days after A level results day

Placed 18 year old applicants: entry rate

Applicant Status	Sex	2011	2012	2013	2014	2015
Placed	Men	20.9%	20.7%	21.3%	22.5%	22.5%
	Women	27.9%	29.7%	29.6%	31.1%	33.1%
	All	24.3%	25.1%	25.4%	26.6%	27.7%

S.59 Placed 18 year old applicants from Wales by sex: 11 days after A level results day

Placed 18 year old applicants: entry rate (indexed to 100 = Men)

Applicant Status	Sex	2011	2012	2013	2014	2015
Placed	Men	100	100	100	100	100
	Women	134	144	139	138	147

S.60 Placed applicants from the EU (excluding the UK) by sex: 11 days after A level results day

Placed applicants: change relative to 2014 cycle totals

Men
Women



S.61 Placed applicants from the EU (excluding the UK) by sex: 11 days after A level results day

Applicant Status	Sex	2011	2012	2013	2014	2015
Placed	Men	11,090	9,500	9,970	10,500	11,470
	Women	13,670	11,940	12,660	13,980	15,680
	All	24,760	21,430	22,630	24,480	27,140

S.62 Placed applicants from the EU (excluding the UK) by sex: 11 days after A level results day

Placed applicants: change relative to 2014 cycle totals

Applicant Status	Sex	2011	2012	2013	2014	2015
Placed	Men	6%	-10%	-5%	0%	9%
	Women	-2%	-15%	-9%	0%	12%
	All	1%	-12%	-8%	0%	11%

S.63 Placed applicants from the EU (excluding the UK) by sex: 11 days after A level results day

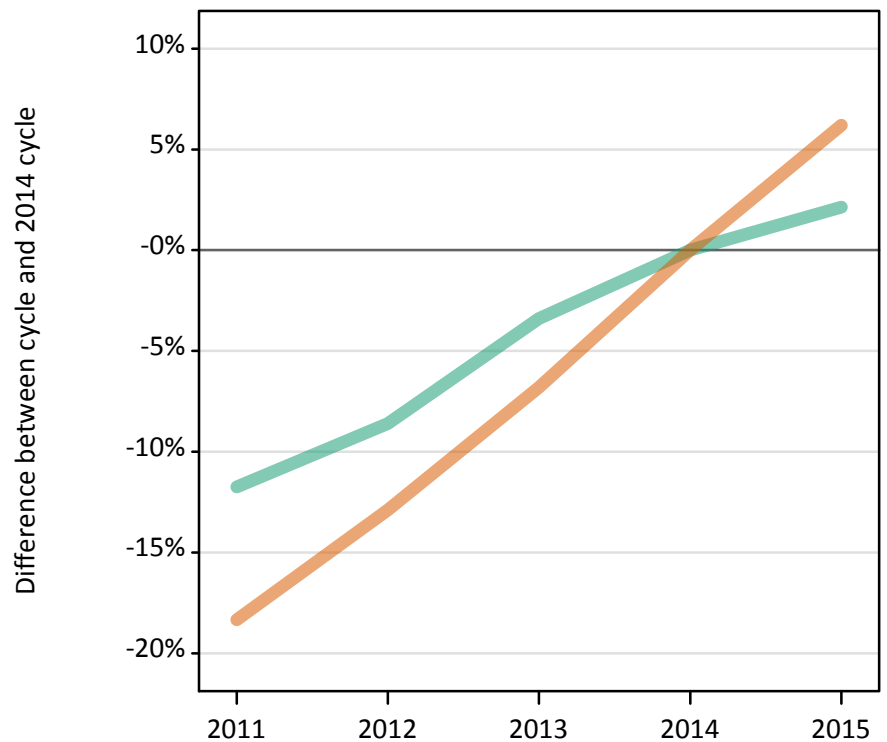
Placed applicants: absolute change relative to 2014 cycle totals

Applicant Status	Sex	2011	2012	2013	2014	2015
Placed	Men	590	-1,010	-530	0	970
	Women	-310	-2,040	-1,320	0	1,700
	All	280	-3,050	-1,850	0	2,670

S.64 Placed applicants from overseas (not EU) by sex: 11 days after A level results day

Placed applicants: change relative to 2014 cycle totals

Men
Women



S.65 Placed applicants from overseas (not EU) by sex: 11 days after A level results day

Applicant Status	Sex	2011	2012	2013	2014	2015
Placed	Men	13,420	13,900	14,690	15,210	15,530
	Women	14,170	15,120	16,170	17,360	18,430
	All	27,590	29,020	30,860	32,560	33,960

S.66 Placed applicants from overseas (not EU) by sex: 11 days after A level results day

Placed applicants: change relative to 2014 cycle totals

Applicant Status	Sex	2011	2012	2013	2014	2015
Placed	Men	-12%	-9%	-3%	0%	2%
	Women	-18%	-13%	-7%	0%	6%
	All	-15%	-11%	-5%	0%	4%

S.67 Placed applicants from overseas (not EU) by sex: 11 days after A level results day

Placed applicants: absolute change relative to 2014 cycle totals

Applicant Status	Sex	2011	2012	2013	2014	2015
Placed	Men	-1,790	-1,310	-520	0	320
	Women	-3,180	-2,240	-1,180	0	1,080
	All	-4,970	-3,540	-1,700	0	1,400