

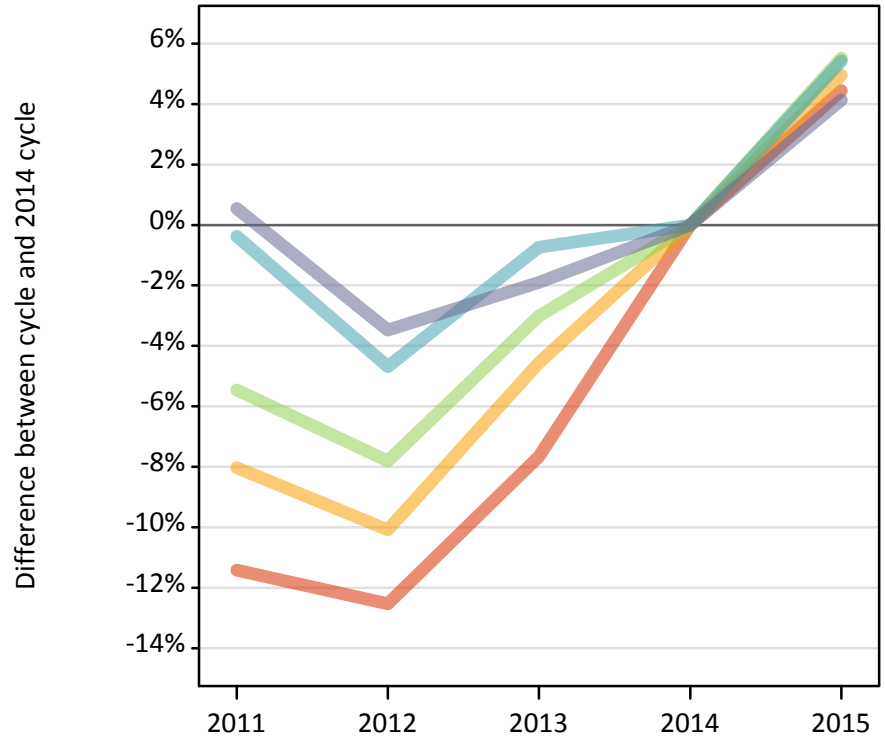
# Daily Clearing Analysis: POLAR3

**Analysis at 00:05 on Friday 21 August 2015 (8 days after A level results day - No Scot.X1)**

**PX.1 Placed 18 year old applicants from England by POLAR3 quintile: 8 days after A level results day**

Placed 18 year old applicants: change relative to 2014 cycle totals

- Quintile 1
- Quintile 2
- Quintile 3
- Quintile 4
- Quintile 5



**PX.2 Placed 18 year old applicants from England by POLAR3 quintile: 8 days after A level results day**

| Applicant Status | POLAR3     | 2011   | 2012   | 2013   | 2014   | 2015   |
|------------------|------------|--------|--------|--------|--------|--------|
| Placed           | Quintile 1 | 18,410 | 18,170 | 19,190 | 20,780 | 21,700 |
|                  | Quintile 2 | 26,900 | 26,300 | 27,910 | 29,250 | 30,690 |
|                  | Quintile 3 | 35,040 | 34,170 | 35,950 | 37,070 | 39,110 |
|                  | Quintile 4 | 43,220 | 41,350 | 43,070 | 43,390 | 45,740 |
|                  | Quintile 5 | 58,330 | 55,990 | 56,910 | 58,010 | 60,400 |

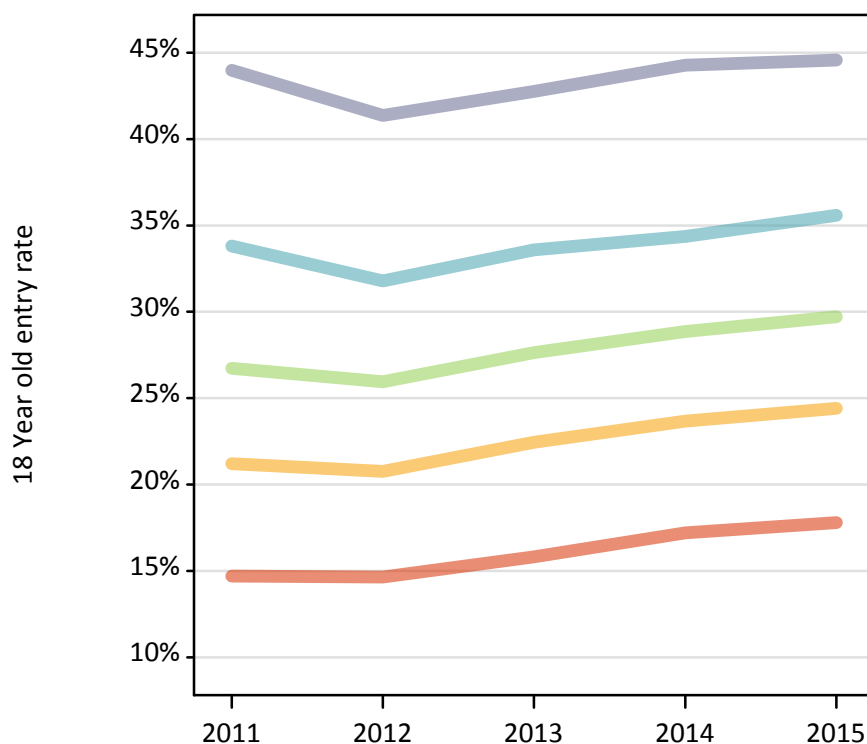
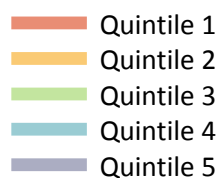
**PX.3 Placed 18 year old applicants from England by POLAR3 quintile: 8 days after A level results day**

Placed 18 year old applicants: change relative to 2014 cycle totals

| Applicant Status | POLAR3     | 2011 | 2012 | 2013 | 2014 | 2015 |
|------------------|------------|------|------|------|------|------|
| Placed           | Quintile 1 | -11% | -13% | -8%  | 0%   | 4%   |
|                  | Quintile 2 | -8%  | -10% | -5%  | 0%   | 5%   |
|                  | Quintile 3 | -5%  | -8%  | -3%  | 0%   | 6%   |
|                  | Quintile 4 | -0%  | -5%  | -1%  | 0%   | 5%   |
|                  | Quintile 5 | 1%   | -3%  | -2%  | 0%   | 4%   |

**PX.4 Placed 18 year old applicants from England by POLAR3 quintile: 8 days after A level results day**

Placed 18 year old applicants: entry rate



**PX.5 Placed 18 year old applicants from England by POLAR3 quintile: 8 days after A level results day**

Placed 18 year old applicants: entry rate

| Applicant Status | POLAR3     | 2011  | 2012  | 2013  | 2014  | 2015  |
|------------------|------------|-------|-------|-------|-------|-------|
| Placed           | Quintile 1 | 14.7% | 14.7% | 15.8% | 17.2% | 17.8% |
|                  | Quintile 2 | 21.2% | 20.8% | 22.4% | 23.7% | 24.4% |
|                  | Quintile 3 | 26.7% | 25.9% | 27.6% | 28.9% | 29.7% |
|                  | Quintile 4 | 33.8% | 31.8% | 33.6% | 34.4% | 35.6% |
|                  | Quintile 5 | 44.0% | 41.4% | 42.8% | 44.3% | 44.6% |

**PX.6 Placed 18 year old applicants from England by POLAR3 quintile: 8 days after A level results day**

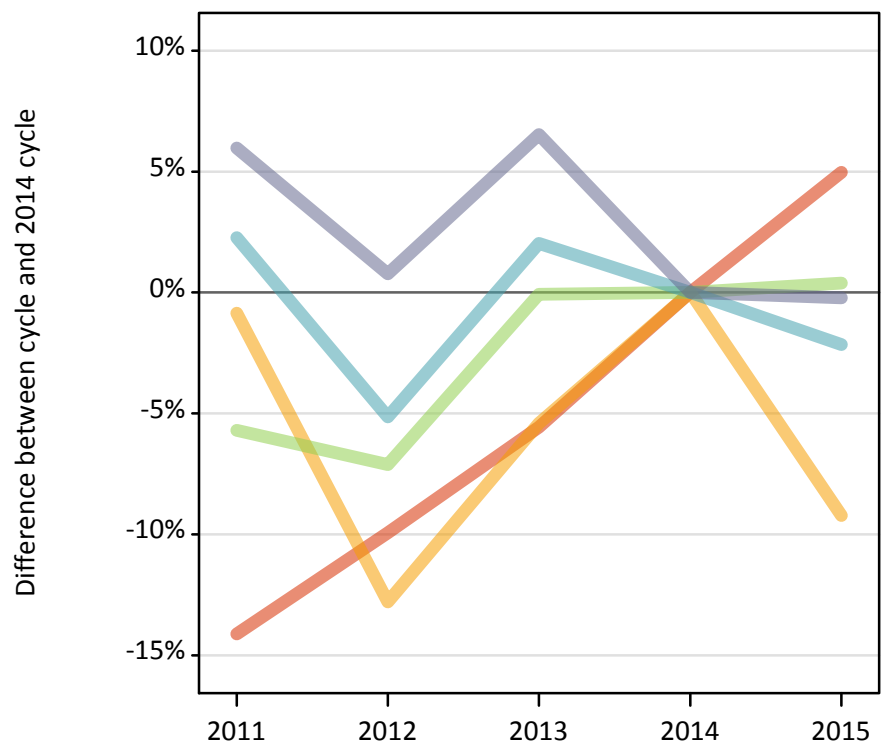
Placed 18 year old applicants: entry rate (indexed to 100 = Quintile 1)

| Applicant Status | POLAR3     | 2011 | 2012 | 2013 | 2014 | 2015 |
|------------------|------------|------|------|------|------|------|
| Placed           | Quintile 1 | 100  | 100  | 100  | 100  | 100  |
|                  | Quintile 2 | 144  | 142  | 142  | 138  | 137  |
|                  | Quintile 3 | 182  | 177  | 175  | 168  | 167  |
|                  | Quintile 4 | 230  | 217  | 212  | 200  | 200  |
|                  | Quintile 5 | 299  | 282  | 270  | 257  | 250  |

**PX.7 Placed 18 year old applicants from Northern Ireland by POLAR3 quintile: 8 days after A level results day**

Placed 18 year old applicants: change relative to 2014 cycle totals

- Quintile 1
- Quintile 2
- Quintile 3
- Quintile 4
- Quintile 5



**PX.8 Placed 18 year old applicants from Northern Ireland by POLAR3 quintile: 8 days after A level results day**

| Applicant Status | POLAR3     | 2011  | 2012  | 2013  | 2014  | 2015  |
|------------------|------------|-------|-------|-------|-------|-------|
| Placed           | Quintile 1 | 430   | 450   | 480   | 500   | 530   |
|                  | Quintile 2 | 810   | 710   | 770   | 810   | 740   |
|                  | Quintile 3 | 1,210 | 1,190 | 1,280 | 1,280 | 1,290 |
|                  | Quintile 4 | 2,570 | 2,380 | 2,560 | 2,510 | 2,450 |
|                  | Quintile 5 | 3,410 | 3,240 | 3,430 | 3,220 | 3,210 |

**PX.9 Placed 18 year old applicants from Northern Ireland by POLAR3 quintile: 8 days after A level results day**

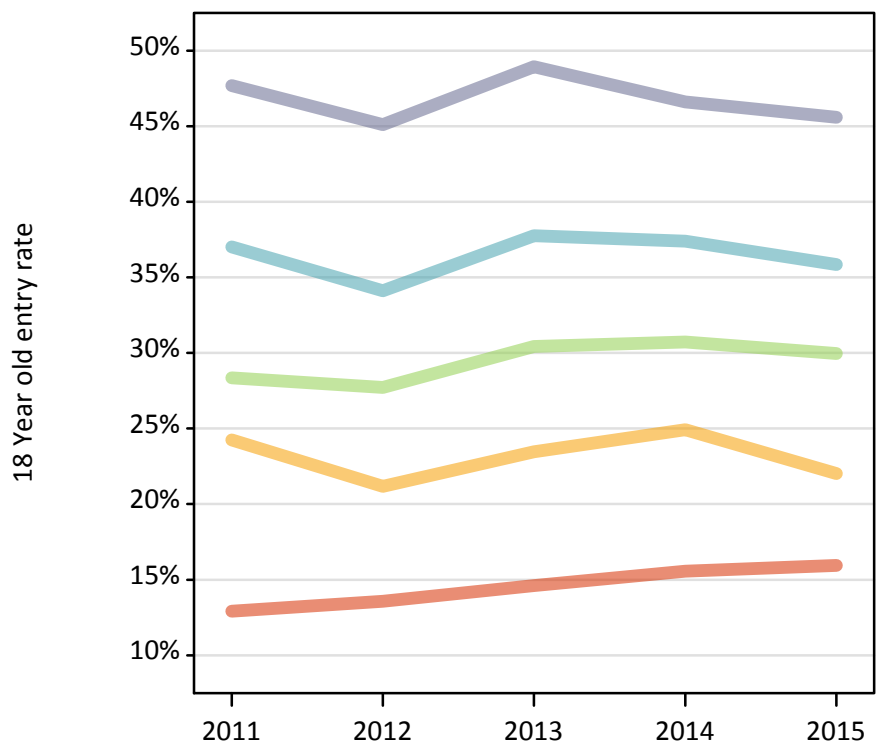
Placed 18 year old applicants: change relative to 2014 cycle totals

| Applicant Status | POLAR3     | 2011 | 2012 | 2013 | 2014 | 2015 |
|------------------|------------|------|------|------|------|------|
| Placed           | Quintile 1 | -14% | -10% | -6%  | 0%   | 5%   |
|                  | Quintile 2 | -1%  | -13% | -5%  | 0%   | -9%  |
|                  | Quintile 3 | -6%  | -7%  | -0%  | 0%   | 0%   |
|                  | Quintile 4 | 2%   | -5%  | 2%   | 0%   | -2%  |
|                  | Quintile 5 | 6%   | 1%   | 7%   | 0%   | -0%  |

**PX.10 Placed 18 year old applicants from Northern Ireland by POLAR3 quintile: 8 days after A level results day**

Placed 18 year old applicants: entry rate

- Quintile 1
- Quintile 2
- Quintile 3
- Quintile 4
- Quintile 5



**PX.11 Placed 18 year old applicants from Northern Ireland by POLAR3 quintile: 8 days after A level results day**

Placed 18 year old applicants: entry rate

| Applicant Status | POLAR3     | 2011  | 2012  | 2013  | 2014  | 2015  |
|------------------|------------|-------|-------|-------|-------|-------|
| Placed           | Quintile 1 | 12.9% | 13.6% | 14.6% | 15.6% | 15.9% |
|                  | Quintile 2 | 24.3% | 21.2% | 23.5% | 24.9% | 22.0% |
|                  | Quintile 3 | 28.4% | 27.7% | 30.4% | 30.7% | 30.0% |
|                  | Quintile 4 | 37.0% | 34.1% | 37.7% | 37.4% | 35.9% |
|                  | Quintile 5 | 47.7% | 45.1% | 48.9% | 46.6% | 45.6% |

**PX.12 Placed 18 year old applicants from Northern Ireland by POLAR3 quintile: 8 days after A level results day**

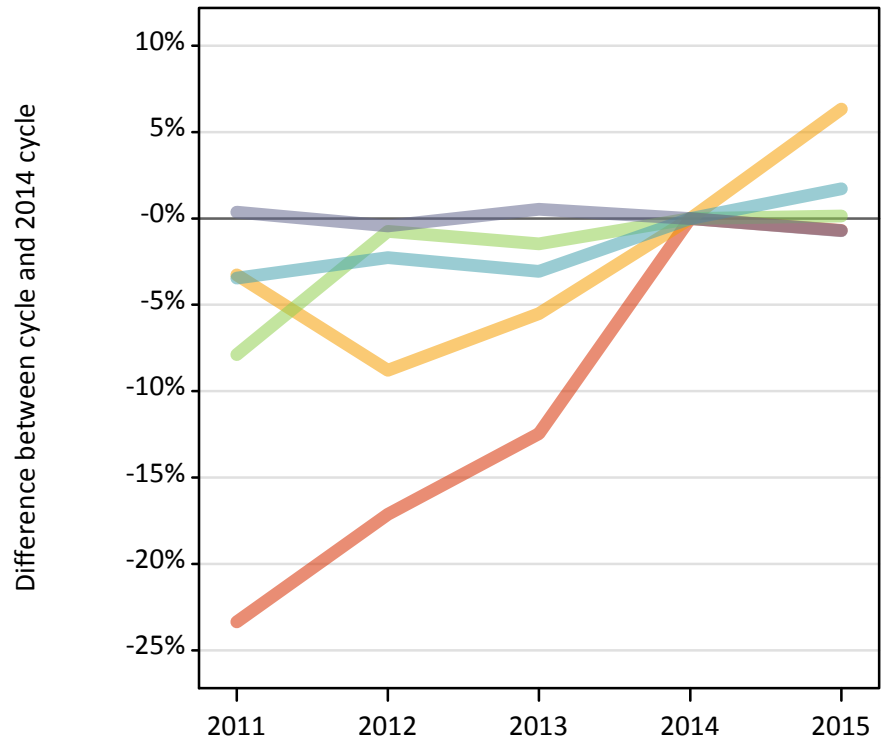
Placed 18 year old applicants: entry rate (indexed to 100 = Quintile 1)

| Applicant Status | POLAR3     | 2011 | 2012 | 2013 | 2014 | 2015 |
|------------------|------------|------|------|------|------|------|
| Placed           | Quintile 1 | 100  | 100  | 100  | 100  | 100  |
|                  | Quintile 2 | 188  | 156  | 161  | 160  | 138  |
|                  | Quintile 3 | 220  | 204  | 208  | 197  | 188  |
|                  | Quintile 4 | 287  | 251  | 258  | 240  | 225  |
|                  | Quintile 5 | 369  | 332  | 335  | 300  | 286  |

**PX.13 Placed 18 year old applicants from Scotland by POLAR3 quintile: 8 days after A level results day**

Placed 18 year old applicants: change relative to 2014 cycle totals

- Quintile 1
- Quintile 2
- Quintile 3
- Quintile 4
- Quintile 5



**PX.14 Placed 18 year old applicants from Scotland by POLAR3 quintile: 8 days after A level results day**

| Applicant Status | POLAR3     | 2011  | 2012  | 2013  | 2014  | 2015  |
|------------------|------------|-------|-------|-------|-------|-------|
| Placed           | Quintile 1 | 440   | 480   | 510   | 580   | 570   |
|                  | Quintile 2 | 1,300 | 1,230 | 1,270 | 1,340 | 1,430 |
|                  | Quintile 3 | 1,950 | 2,100 | 2,090 | 2,120 | 2,120 |
|                  | Quintile 4 | 3,160 | 3,200 | 3,170 | 3,270 | 3,330 |
|                  | Quintile 5 | 6,610 | 6,550 | 6,620 | 6,580 | 6,540 |

**PX.15 Placed 18 year old applicants from Scotland by POLAR3 quintile: 8 days after A level results day**

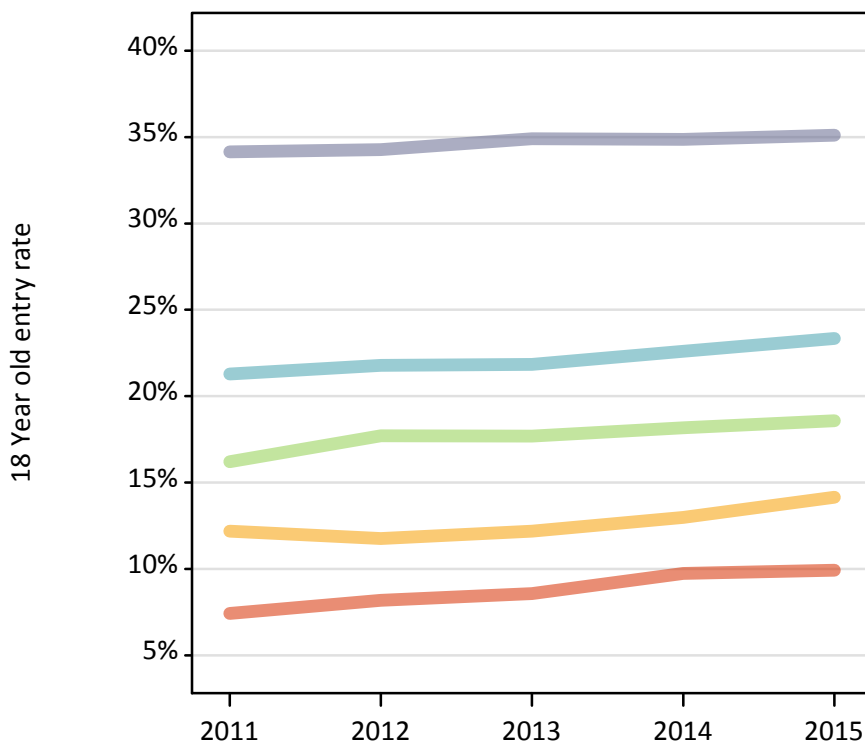
Placed 18 year old applicants: change relative to 2014 cycle totals

| Applicant Status | POLAR3     | 2011 | 2012 | 2013 | 2014 | 2015 |
|------------------|------------|------|------|------|------|------|
| Placed           | Quintile 1 | -23% | -17% | -12% | 0%   | -1%  |
|                  | Quintile 2 | -3%  | -9%  | -6%  | 0%   | 6%   |
|                  | Quintile 3 | -8%  | -1%  | -1%  | 0%   | 0%   |
|                  | Quintile 4 | -3%  | -2%  | -3%  | 0%   | 2%   |
|                  | Quintile 5 | 0%   | -0%  | 1%   | 0%   | -1%  |

**PX.16 Placed 18 year old applicants from Scotland by POLAR3 quintile: 8 days after A level results day**

Placed 18 year old applicants: entry rate

- Quintile 1
- Quintile 2
- Quintile 3
- Quintile 4
- Quintile 5



**PX.17 Placed 18 year old applicants from Scotland by POLAR3 quintile: 8 days after A level results day**

Placed 18 year old applicants: entry rate

| Applicant Status | POLAR3     | 2011  | 2012  | 2013  | 2014  | 2015  |
|------------------|------------|-------|-------|-------|-------|-------|
| Placed           | Quintile 1 | 7.4%  | 8.2%  | 8.6%  | 9.7%  | 9.9%  |
|                  | Quintile 2 | 12.2% | 11.7% | 12.2% | 13.0% | 14.1% |
|                  | Quintile 3 | 16.2% | 17.7% | 17.7% | 18.2% | 18.6% |
|                  | Quintile 4 | 21.3% | 21.8% | 21.8% | 22.6% | 23.3% |
|                  | Quintile 5 | 34.1% | 34.3% | 34.9% | 34.9% | 35.1% |

**PX.18 Placed 18 year old applicants from Scotland by POLAR3 quintile: 8 days after A level results day**

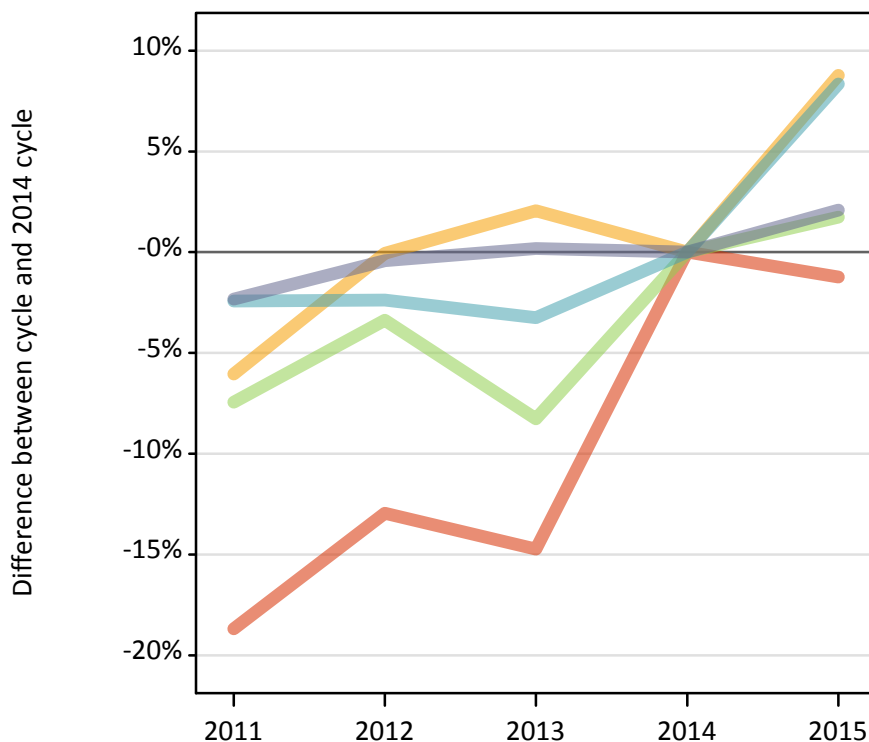
Placed 18 year old applicants: entry rate (indexed to 100 = Quintile 1)

| Applicant Status | POLAR3     | 2011 | 2012 | 2013 | 2014 | 2015 |
|------------------|------------|------|------|------|------|------|
| Placed           | Quintile 1 | 100  | 100  | 100  | 100  | 100  |
|                  | Quintile 2 | 164  | 144  | 142  | 133  | 143  |
|                  | Quintile 3 | 218  | 216  | 206  | 187  | 187  |
|                  | Quintile 4 | 287  | 266  | 255  | 232  | 235  |
|                  | Quintile 5 | 460  | 419  | 407  | 358  | 354  |

**PX.19 Placed 18 year old applicants from Wales by POLAR3 quintile: 8 days after A level results day**

Placed 18 year old applicants: change relative to 2014 cycle totals

- Quintile 1
- Quintile 2
- Quintile 3
- Quintile 4
- Quintile 5



**PX.20 Placed 18 year old applicants from Wales by POLAR3 quintile: 8 days after A level results day**

| Applicant Status | POLAR3     | 2011  | 2012  | 2013  | 2014  | 2015  |
|------------------|------------|-------|-------|-------|-------|-------|
| Placed           | Quintile 1 | 1,190 | 1,280 | 1,250 | 1,470 | 1,450 |
|                  | Quintile 2 | 1,820 | 1,940 | 1,980 | 1,940 | 2,110 |
|                  | Quintile 3 | 1,590 | 1,660 | 1,580 | 1,720 | 1,750 |
|                  | Quintile 4 | 2,140 | 2,140 | 2,120 | 2,190 | 2,370 |
|                  | Quintile 5 | 2,560 | 2,610 | 2,630 | 2,630 | 2,680 |

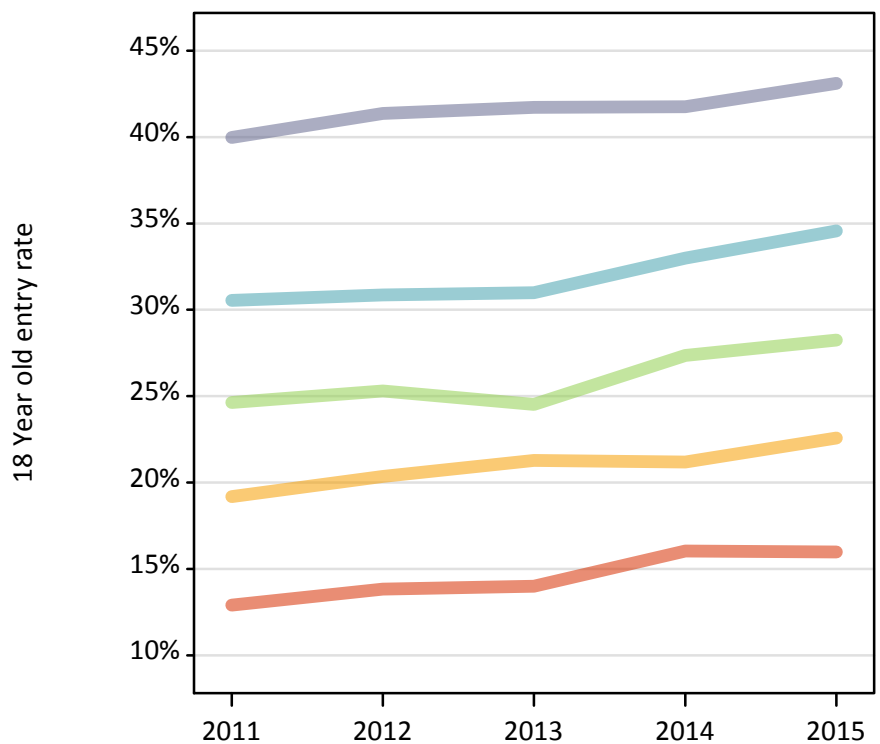
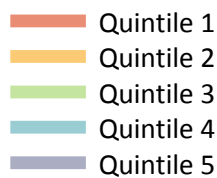
**PX.21 Placed 18 year old applicants from Wales by POLAR3 quintile: 8 days after A level results day**

Placed 18 year old applicants: change relative to 2014 cycle totals

| Applicant Status | POLAR3     | 2011 | 2012 | 2013 | 2014 | 2015 |
|------------------|------------|------|------|------|------|------|
| Placed           | Quintile 1 | -19% | -13% | -15% | 0%   | -1%  |
|                  | Quintile 2 | -6%  | -0%  | 2%   | 0%   | 9%   |
|                  | Quintile 3 | -7%  | -3%  | -8%  | 0%   | 2%   |
|                  | Quintile 4 | -2%  | -2%  | -3%  | 0%   | 8%   |
|                  | Quintile 5 | -2%  | -0%  | 0%   | 0%   | 2%   |

**PX.22 Placed 18 year old applicants from Wales by POLAR3 quintile: 8 days after A level results day**

Placed 18 year old applicants: entry rate



**PX.23 Placed 18 year old applicants from Wales by POLAR3 quintile: 8 days after A level results day**

Placed 18 year old applicants: entry rate

| Applicant Status | POLAR3     | 2011  | 2012  | 2013  | 2014  | 2015  |
|------------------|------------|-------|-------|-------|-------|-------|
| Placed           | Quintile 1 | 12.9% | 13.8% | 14.0% | 16.0% | 16.0% |
|                  | Quintile 2 | 19.2% | 20.4% | 21.3% | 21.2% | 22.6% |
|                  | Quintile 3 | 24.6% | 25.3% | 24.5% | 27.4% | 28.3% |
|                  | Quintile 4 | 30.5% | 30.9% | 31.0% | 33.0% | 34.6% |
|                  | Quintile 5 | 40.0% | 41.4% | 41.7% | 41.8% | 43.1% |

**PX.24 Placed 18 year old applicants from Wales by POLAR3 quintile: 8 days after A level results day**

Placed 18 year old applicants: entry rate (indexed to 100 = Quintile 1)

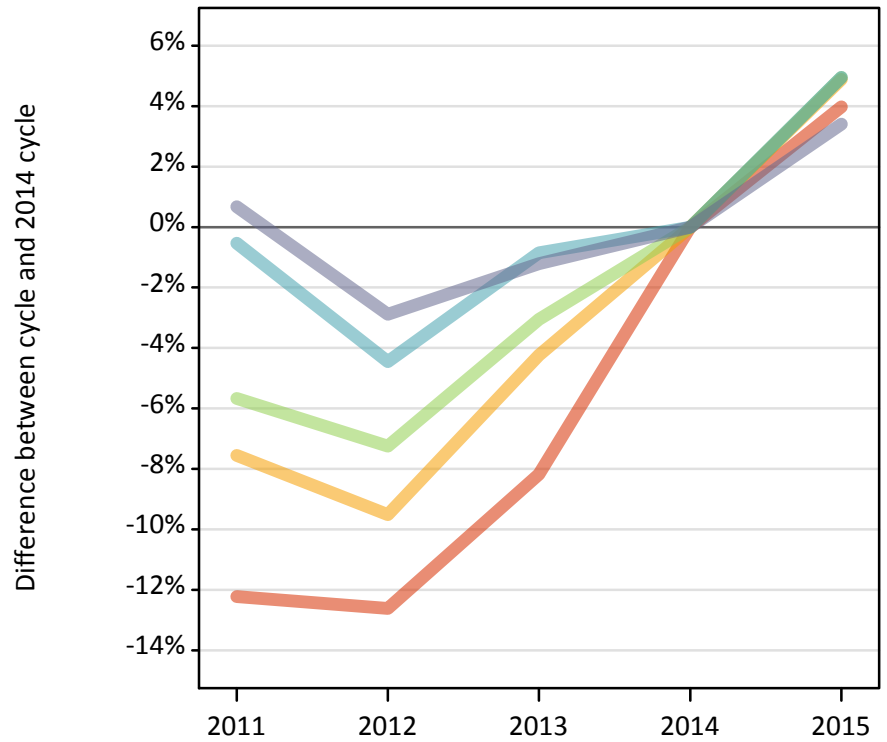
| Applicant Status | POLAR3     | 2011 | 2012 | 2013 | 2014 | 2015 |
|------------------|------------|------|------|------|------|------|
| Placed           | Quintile 1 | 100  | 100  | 100  | 100  | 100  |
|                  | Quintile 2 | 149  | 147  | 152  | 132  | 141  |
|                  | Quintile 3 | 191  | 183  | 175  | 171  | 177  |
|                  | Quintile 4 | 237  | 223  | 221  | 206  | 216  |
|                  | Quintile 5 | 310  | 299  | 298  | 260  | 270  |



**PX.25 Placed 18 year old applicants from the UK by POLAR3 quintile: 8 days after A level results day**

Placed 18 year old applicants: change relative to 2014 cycle totals

- Quintile 1
- Quintile 2
- Quintile 3
- Quintile 4
- Quintile 5



**PX.26 Placed 18 year old applicants from the UK by POLAR3 quintile: 8 days after A level results day**

| Applicant Status | POLAR3     | 2011   | 2012   | 2013   | 2014   | 2015   |
|------------------|------------|--------|--------|--------|--------|--------|
| Placed           | Quintile 1 | 20,470 | 20,380 | 21,420 | 23,330 | 24,250 |
|                  | Quintile 2 | 30,820 | 30,170 | 31,930 | 33,340 | 34,970 |
|                  | Quintile 3 | 39,790 | 39,120 | 40,890 | 42,180 | 44,270 |
|                  | Quintile 4 | 51,080 | 49,070 | 50,920 | 51,360 | 53,900 |
|                  | Quintile 5 | 70,900 | 68,400 | 69,580 | 70,430 | 72,830 |

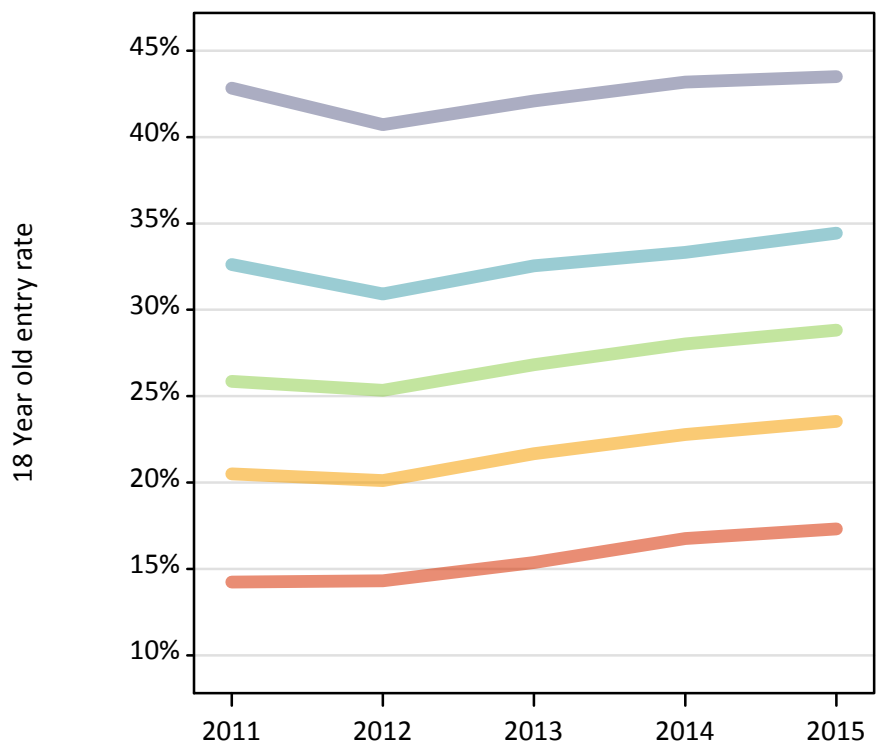
**PX.27 Placed 18 year old applicants from the UK by POLAR3 quintile: 8 days after A level results day**

Placed 18 year old applicants: change relative to 2014 cycle totals

| Applicant Status | POLAR3     | 2011 | 2012 | 2013 | 2014 | 2015 |
|------------------|------------|------|------|------|------|------|
| Placed           | Quintile 1 | -12% | -13% | -8%  | 0%   | 4%   |
|                  | Quintile 2 | -8%  | -10% | -4%  | 0%   | 5%   |
|                  | Quintile 3 | -6%  | -7%  | -3%  | 0%   | 5%   |
|                  | Quintile 4 | -1%  | -4%  | -1%  | 0%   | 5%   |
|                  | Quintile 5 | 1%   | -3%  | -1%  | 0%   | 3%   |

**PX.28 Placed 18 year old applicants from the UK by POLAR3 quintile: 8 days after A level results day**

Placed 18 year old applicants: entry rate



**PX.29 Placed 18 year old applicants from the UK by POLAR3 quintile: 8 days after A level results day**

Placed 18 year old applicants: entry rate

| Applicant Status | POLAR3     | 2011  | 2012  | 2013  | 2014  | 2015  |
|------------------|------------|-------|-------|-------|-------|-------|
| Placed           | Quintile 1 | 14.2% | 14.3% | 15.4% | 16.8% | 17.3% |
|                  | Quintile 2 | 20.5% | 20.1% | 21.7% | 22.8% | 23.5% |
|                  | Quintile 3 | 25.9% | 25.3% | 26.8% | 28.0% | 28.8% |
|                  | Quintile 4 | 32.6% | 30.9% | 32.6% | 33.3% | 34.4% |
|                  | Quintile 5 | 42.8% | 40.7% | 42.1% | 43.2% | 43.5% |

**PX.30 Placed 18 year old applicants from the UK by POLAR3 quintile: 8 days after A level results day**

Placed 18 year old applicants: entry rate (indexed to 100 = Quintile 1)

| Applicant Status | POLAR3     | 2011 | 2012 | 2013 | 2014 | 2015 |
|------------------|------------|------|------|------|------|------|
| Placed           | Quintile 1 | 100  | 100  | 100  | 100  | 100  |
|                  | Quintile 2 | 144  | 141  | 141  | 136  | 136  |
|                  | Quintile 3 | 182  | 177  | 174  | 167  | 167  |
|                  | Quintile 4 | 229  | 216  | 212  | 199  | 199  |
|                  | Quintile 5 | 301  | 285  | 274  | 258  | 251  |