

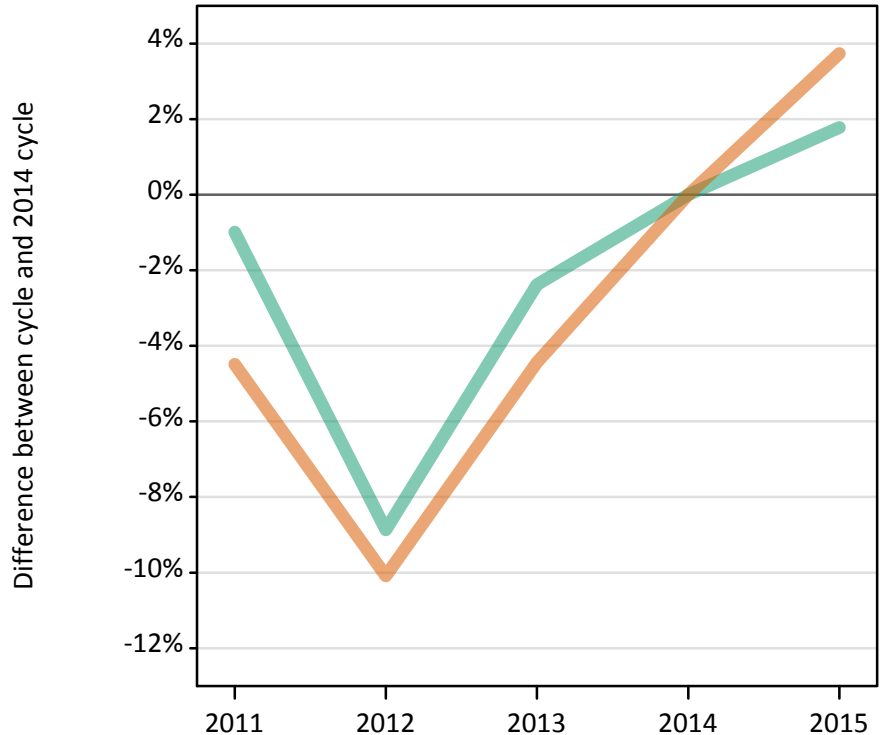
Daily Clearing Analysis: Sex

Analysis at 00:05 on Friday 21 August 2015 (8 days after A level results day - No Scot.X1)

SX.1 Placed applicants from all domiciles by sex: 8 days after A level results day

Placed applicants: change relative to 2014 cycle totals

Men
Women



SX.2 Placed applicants from all domiciles by sex: 8 days after A level results day

Applicant Status	Sex	2011	2012	2013	2014	2015
Placed	Men	202,880	186,750	200,040	204,920	208,570
	Women	247,420	232,920	247,560	259,050	268,720
	All	450,310	419,670	447,600	463,970	477,280

SX.3 Placed applicants from all domiciles by sex: 8 days after A level results day

Placed applicants: change relative to 2014 cycle totals

Applicant Status	Sex	2011	2012	2013	2014	2015
Placed	Men	-1%	-9%	-2%	0%	2%
	Women	-4%	-10%	-4%	0%	4%
	All	-3%	-10%	-4%	0%	3%

SX.4 Placed applicants from all domiciles by sex: 8 days after A level results day

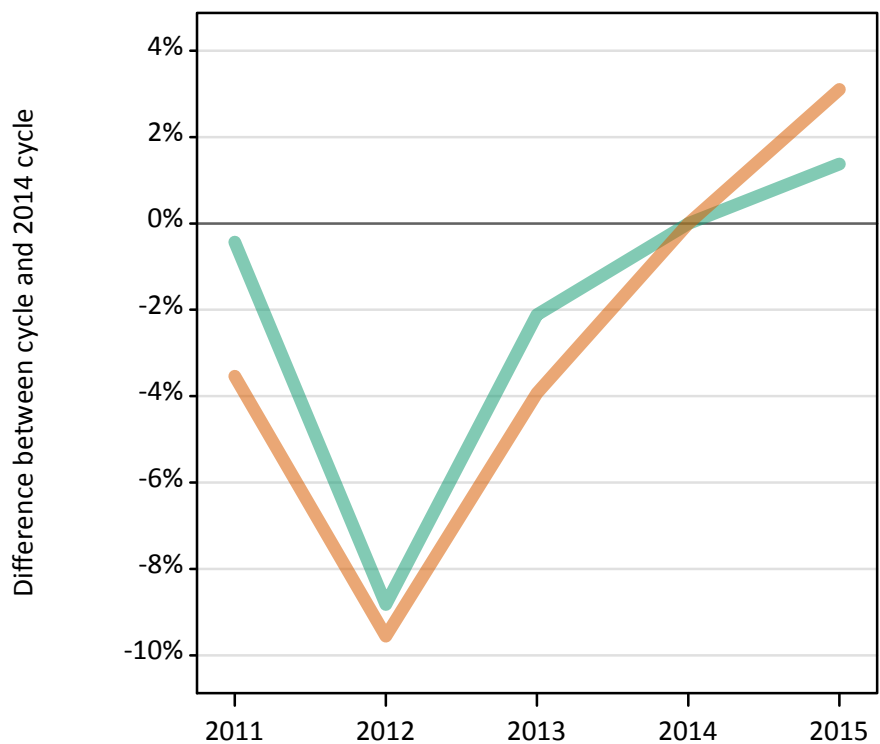
Placed applicants: absolute change relative to 2014 cycle totals

Applicant Status	Sex	2011	2012	2013	2014	2015
Placed	Men	-2,030	-18,170	-4,880	0	3,650
	Women	-11,630	-26,130	-11,490	0	9,670
	All	-13,660	-44,300	-16,370	0	13,320

SX.5 Placed applicants from the UK by sex: 8 days after A level results day

Placed applicants: change relative to 2014 cycle totals

Men
Women



SX.6 Placed applicants from the UK by sex: 8 days after A level results day

Applicant Status	Sex	2011	2012	2013	2014	2015
Placed	Men	178,690	163,630	175,670	179,460	181,940
	Women	219,920	206,190	219,010	227,980	235,060
	All	398,600	369,820	394,680	407,450	416,990

SX.7 Placed applicants from the UK by sex: 8 days after A level results day

Placed applicants: change relative to 2014 cycle totals

Applicant Status	Sex	2011	2012	2013	2014	2015
Placed	Men	-0%	-9%	-2%	0%	1%
	Women	-4%	-10%	-4%	0%	3%
	All	-2%	-9%	-3%	0%	2%

SX.8 Placed applicants from the UK by sex: 8 days after A level results day

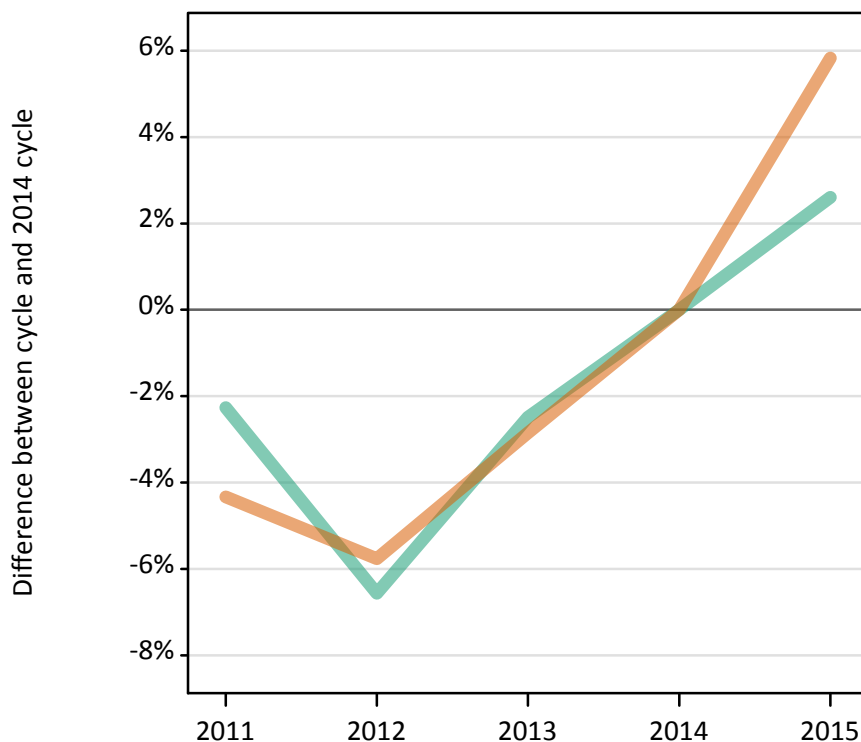
Placed applicants: absolute change relative to 2014 cycle totals

Applicant Status	Sex	2011	2012	2013	2014	2015
Placed	Men	-780	-15,840	-3,800	0	2,470
	Women	-8,070	-21,790	-8,970	0	7,070
	All	-8,840	-37,630	-12,770	0	9,550

SX.9 Placed 18 year old applicants from the UK by sex: 8 days after A level results day

Placed 18 year old applicants: change relative to 2014 cycle totals

Men
Women



SX.10 Placed 18 year old applicants from the UK by sex: 8 days after A level results day

Applicant Status	Sex	2011	2012	2013	2014	2015
Placed	Men	96,110	91,880	95,880	98,330	100,890
	Women	117,380	115,620	119,190	122,700	129,850
	All	213,480	207,500	215,080	221,030	230,740

SX.11 Placed 18 year old applicants from the UK by sex: 8 days after A level results day

Placed 18 year old applicants: change relative to 2014 cycle totals

Applicant Status	Sex	2011	2012	2013	2014	2015
Placed	Men	-2%	-7%	-2%	0%	3%
	Women	-4%	-6%	-3%	0%	6%
	All	-3%	-6%	-3%	0%	4%

SX.12 Placed 18 year old applicants from the UK by sex: 8 days after A level results day

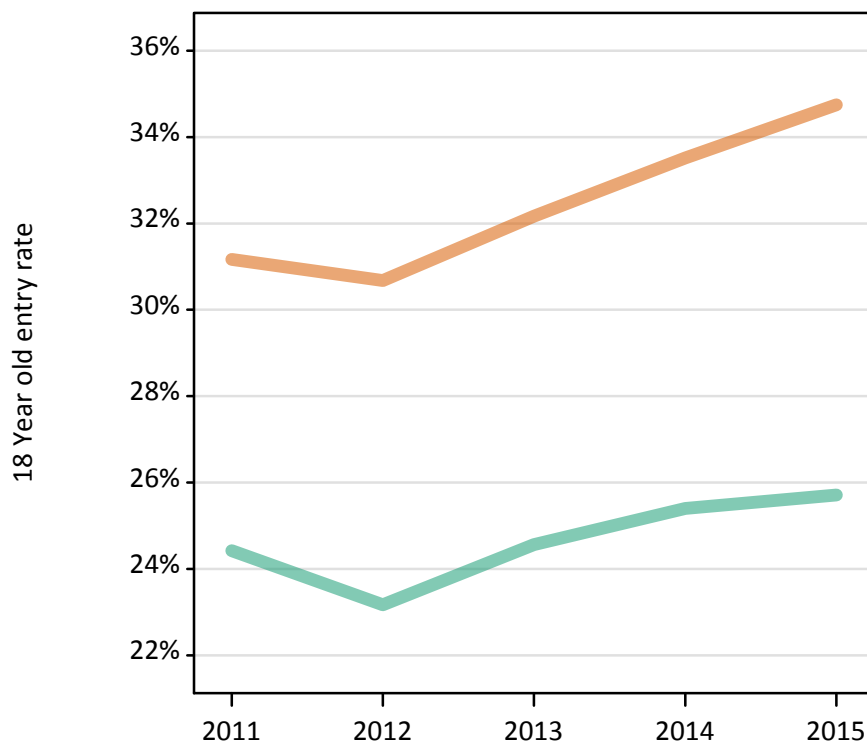
Placed 18 year old applicants: absolute change relative to 2014 cycle totals

Applicant Status	Sex	2011	2012	2013	2014	2015
Placed	Men	-2,230	-6,460	-2,450	0	2,560
	Women	-5,320	-7,070	-3,500	0	7,150
	All	-7,550	-13,530	-5,950	0	9,710

SX.13 Placed 18 year old applicants from the UK by sex: 8 days after A level results day

Placed 18 year old applicants: entry rate

Men
Women



SX.14 Placed 18 year old applicants from the UK by sex: 8 days after A level results day

Placed 18 year old applicants: entry rate

Applicant Status	Sex	2011	2012	2013	2014	2015
Placed	Men	24.4%	23.2%	24.6%	25.4%	25.7%
	Women	31.2%	30.7%	32.2%	33.5%	34.7%
	All	27.7%	26.8%	28.3%	29.3%	30.1%

SX.15 Placed 18 year old applicants from the UK by sex: 8 days after A level results day

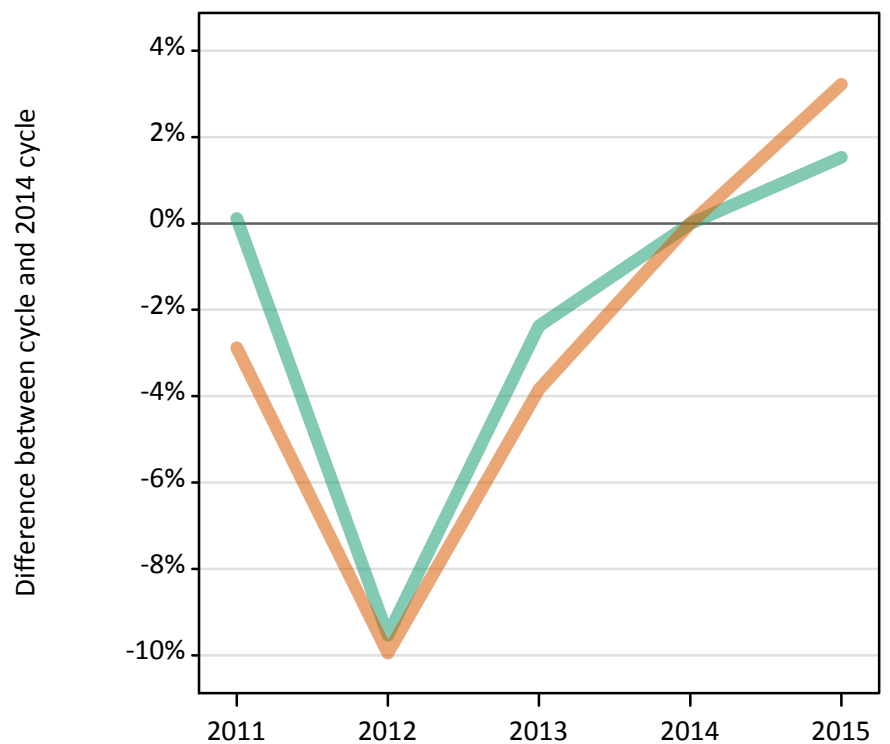
Placed 18 year old applicants: entry rate (indexed to 100 = Men)

Applicant Status	Sex	2011	2012	2013	2014	2015
Placed	Men	100	100	100	100	100
	Women	128	132	131	132	135

SX.16 Placed applicants from England by sex: 8 days after A level results day

Placed applicants: change relative to 2014 cycle totals

Men
Women



SX.17 Placed applicants from England by sex: 8 days after A level results day

Applicant Status	Sex	2011	2012	2013	2014	2015
Placed	Men	153,730	138,910	149,900	153,550	155,900
	Women	187,810	174,140	185,940	193,380	199,600
	All	341,540	313,050	335,850	346,930	355,510

SX.18 Placed applicants from England by sex: 8 days after A level results day

Placed applicants: change relative to 2014 cycle totals

Applicant Status	Sex	2011	2012	2013	2014	2015
Placed	Men	0%	-10%	-2%	0%	2%
	Women	-3%	-10%	-4%	0%	3%
	All	-2%	-10%	-3%	0%	2%

SX.19 Placed applicants from England by sex: 8 days after A level results day

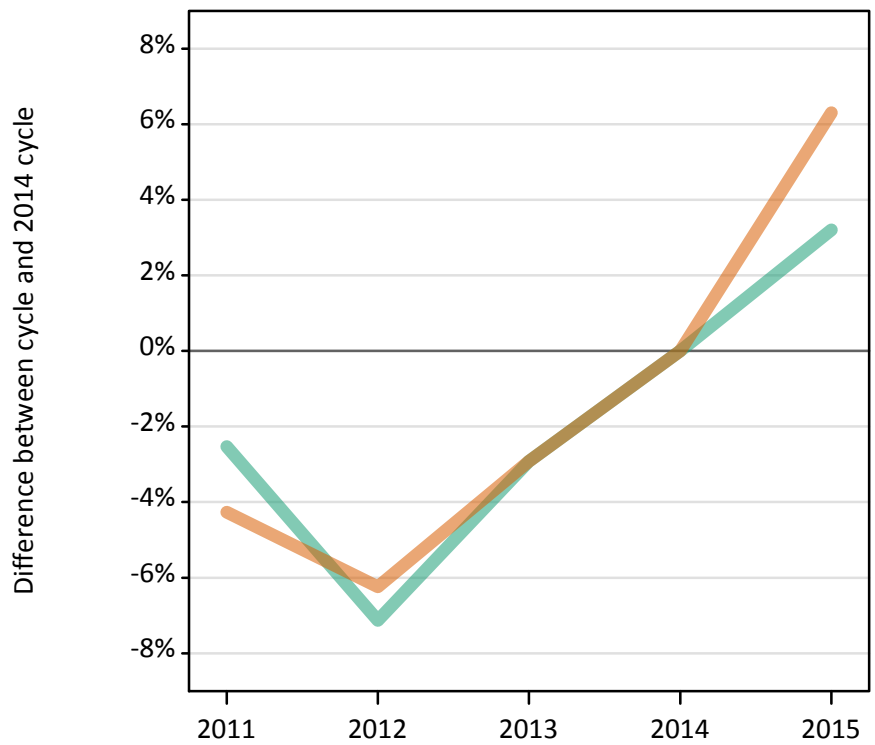
Placed applicants: absolute change relative to 2014 cycle totals

Applicant Status	Sex	2011	2012	2013	2014	2015
Placed	Men	180	-14,640	-3,650	0	2,350
	Women	-5,570	-19,240	-7,440	0	6,230
	All	-5,390	-33,880	-11,080	0	8,580

SX.20 Placed 18 year old applicants from England by sex: 8 days after A level results day

Placed 18 year old applicants: change relative to 2014 cycle totals

Men
Women



SX.21 Placed 18 year old applicants from England by sex: 8 days after A level results day

Applicant Status	Sex	2011	2012	2013	2014	2015
Placed	Men	82,310	78,430	81,990	84,450	87,160
	Women	99,920	97,860	101,320	104,370	110,960
	All	182,230	176,290	183,310	188,820	198,110

SX.22 Placed 18 year old applicants from England by sex: 8 days after A level results day

Placed 18 year old applicants: change relative to 2014 cycle totals

Applicant Status	Sex	2011	2012	2013	2014	2015
Placed	Men	-3%	-7%	-3%	0%	3%
	Women	-4%	-6%	-3%	0%	6%
	All	-3%	-7%	-3%	0%	5%

SX.23 Placed 18 year old applicants from England by sex: 8 days after A level results day

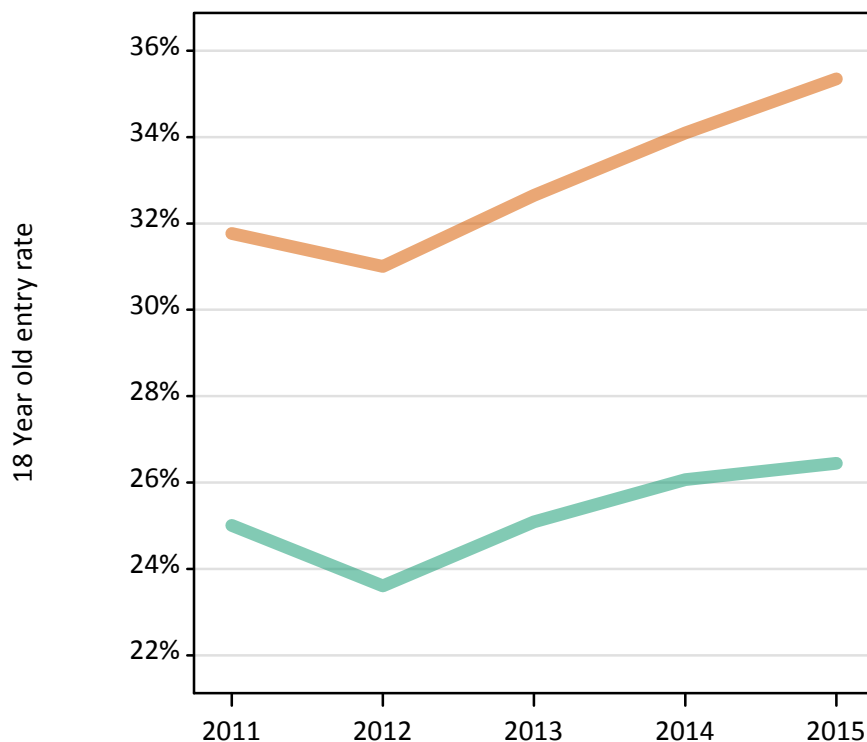
Placed 18 year old applicants: absolute change relative to 2014 cycle totals

Applicant Status	Sex	2011	2012	2013	2014	2015
Placed	Men	-2,140	-6,020	-2,460	0	2,710
	Women	-4,460	-6,510	-3,050	0	6,580
	All	-6,590	-12,530	-5,510	0	9,290

SX.24 Placed 18 year old applicants from England by sex: 8 days after A level results day

Placed 18 year old applicants: entry rate

Men
Women



SX.25 Placed 18 year old applicants from England by sex: 8 days after A level results day

Placed 18 year old applicants: entry rate

Applicant Status	Sex	2011	2012	2013	2014	2015
Placed	Men	25.0%	23.6%	25.1%	26.1%	26.4%
	Women	31.8%	31.0%	32.7%	34.1%	35.3%
	All	28.3%	27.2%	28.8%	30.0%	30.8%

SX.26 Placed 18 year old applicants from England by sex: 8 days after A level results day

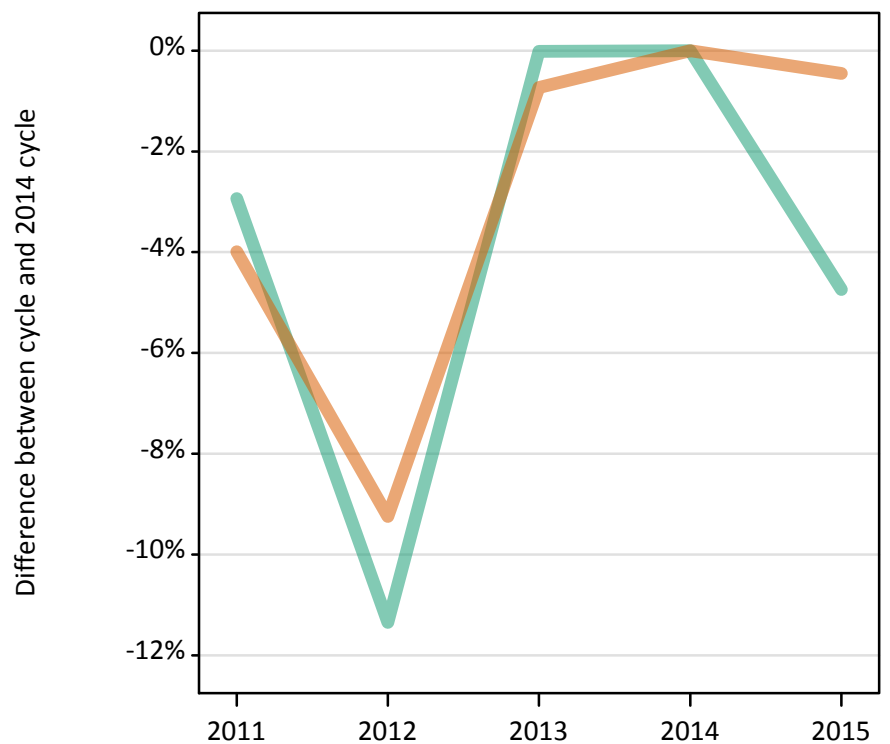
Placed 18 year old applicants: entry rate (indexed to 100 = Men)

Applicant Status	Sex	2011	2012	2013	2014	2015
Placed	Men	100	100	100	100	100
	Women	127	131	130	131	134

SX.27 Placed applicants from Northern Ireland by sex: 8 days after A level results day

Placed applicants: change relative to 2014 cycle totals

Men
Women



SX.28 Placed applicants from Northern Ireland by sex: 8 days after A level results day

Applicant Status	Sex	2011	2012	2013	2014	2015
Placed	Men	6,020	5,500	6,200	6,200	5,910
	Women	7,240	6,840	7,480	7,540	7,500
	All	13,260	12,340	13,680	13,740	13,410

SX.29 Placed applicants from Northern Ireland by sex: 8 days after A level results day

Placed applicants: change relative to 2014 cycle totals

Applicant Status	Sex	2011	2012	2013	2014	2015
Placed	Men	-3%	-11%	-0%	0%	-5%
	Women	-4%	-9%	-1%	0%	-0%
	All	-4%	-10%	-0%	0%	-2%

SX.30 Placed applicants from Northern Ireland by sex: 8 days after A level results day

Placed applicants: absolute change relative to 2014 cycle totals

Applicant Status	Sex	2011	2012	2013	2014	2015
Placed	Men	-180	-700	0	0	-290
	Women	-300	-700	-60	0	-30
	All	-480	-1,400	-60	0	-330

SX.31 Placed 18 year old applicants from Northern Ireland by sex: 8 days after A level results day

Placed 18 year old applicants: change relative to 2014 cycle totals

Men
Women



SX.32 Placed 18 year old applicants from Northern Ireland by sex: 8 days after A level results day

Applicant Status	Sex	2011	2012	2013	2014	2015
Placed	Men	3,720	3,430	3,780	3,640	3,490
	Women	4,720	4,550	4,750	4,700	4,740
	All	8,440	7,980	8,530	8,330	8,230

SX.33 Placed 18 year old applicants from Northern Ireland by sex: 8 days after A level results day

Placed 18 year old applicants: change relative to 2014 cycle totals

Applicant Status	Sex	2011	2012	2013	2014	2015
Placed	Men	2%	-6%	4%	0%	-4%
	Women	1%	-3%	1%	0%	1%
	All	1%	-4%	2%	0%	-1%

SX.34 Placed 18 year old applicants from Northern Ireland by sex: 8 days after A level results day

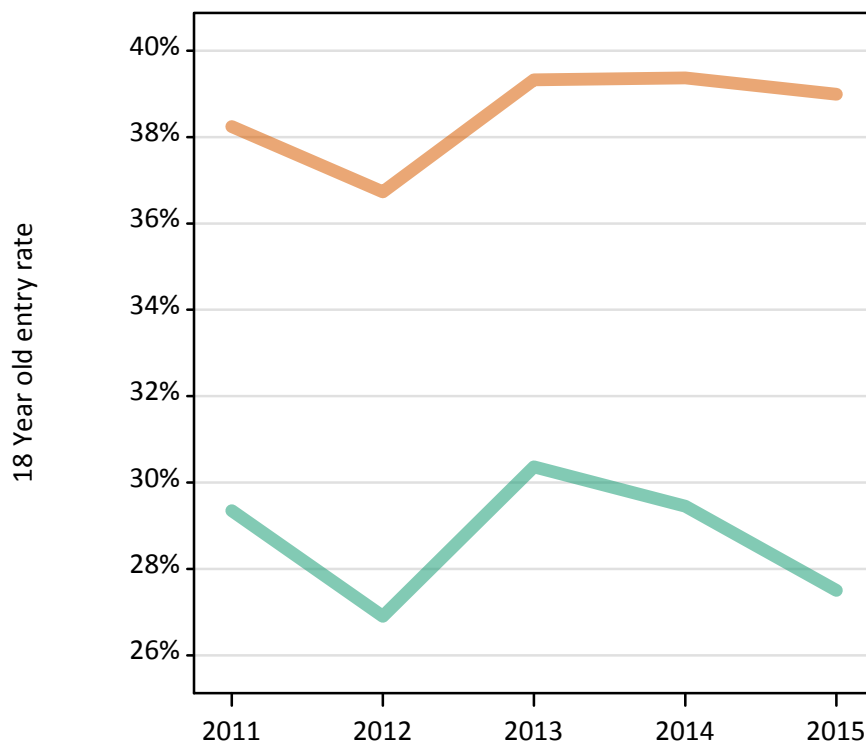
Placed 18 year old applicants: absolute change relative to 2014 cycle totals

Applicant Status	Sex	2011	2012	2013	2014	2015
Placed	Men	80	-210	140	0	-150
	Women	30	-150	50	0	50
	All	110	-350	200	0	-100

SX.35 Placed 18 year old applicants from Northern Ireland by sex: 8 days after A level results day

Placed 18 year old applicants: entry rate

Men
Women



SX.36 Placed 18 year old applicants from Northern Ireland by sex: 8 days after A level results day

Placed 18 year old applicants: entry rate

Applicant Status	Sex	2011	2012	2013	2014	2015
Placed	Men	29.4%	26.9%	30.4%	29.4%	27.5%
	Women	38.2%	36.7%	39.3%	39.4%	39.0%
	All	33.7%	31.7%	34.8%	34.3%	33.1%

SX.37 Placed 18 year old applicants from Northern Ireland by sex: 8 days after A level results day

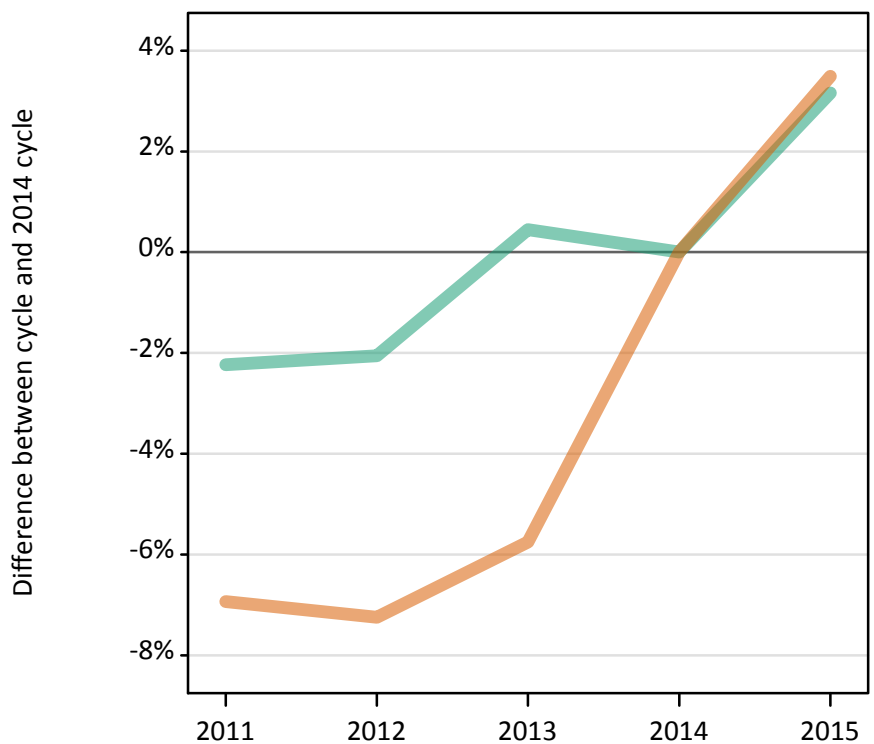
Placed 18 year old applicants: entry rate (indexed to 100 = Men)

Applicant Status	Sex	2011	2012	2013	2014	2015
Placed	Men	100	100	100	100	100
	Women	130	137	130	134	142

SX.38 Placed applicants from Scotland by sex: 8 days after A level results day

Placed applicants: change relative to 2014 cycle totals

Men
Women



SX.39 Placed applicants from Scotland by sex: 8 days after A level results day

Applicant Status	Sex	2011	2012	2013	2014	2015
Placed	Men	11,640	11,660	11,960	11,910	12,280
	Women	15,300	15,240	15,490	16,440	17,010
	All	26,940	26,910	27,450	28,340	29,290

SX.40 Placed applicants from Scotland by sex: 8 days after A level results day

Placed applicants: change relative to 2014 cycle totals

Applicant Status	Sex	2011	2012	2013	2014	2015
Placed	Men	-2%	-2%	0%	0%	3%
	Women	-7%	-7%	-6%	0%	3%
	All	-5%	-5%	-3%	0%	3%

SX.41 Placed applicants from Scotland by sex: 8 days after A level results day

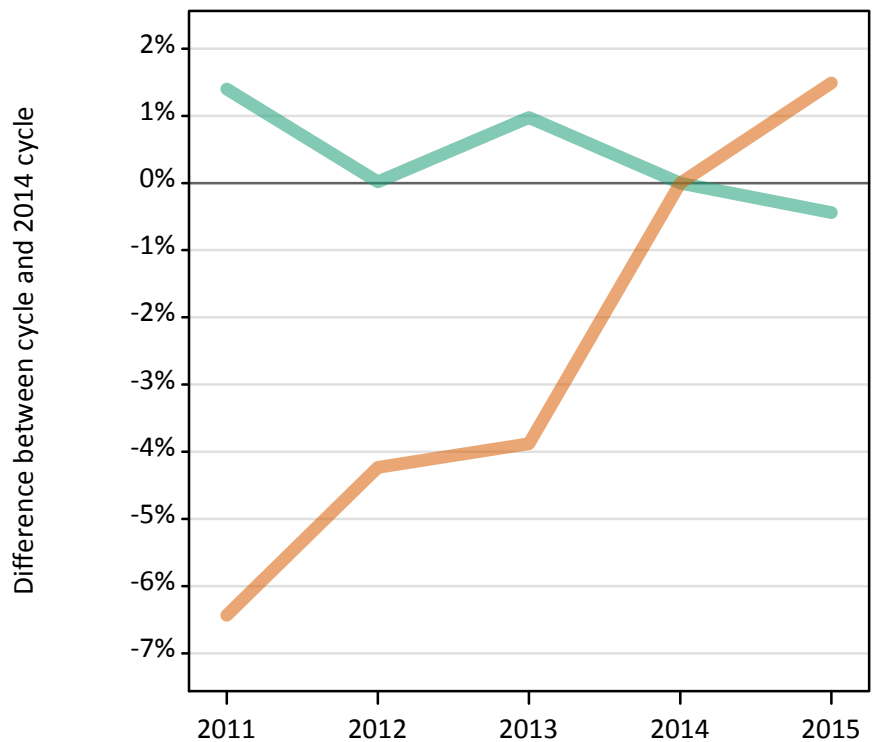
Placed applicants: absolute change relative to 2014 cycle totals

Applicant Status	Sex	2011	2012	2013	2014	2015
Placed	Men	-270	-250	50	0	380
	Women	-1,140	-1,190	-950	0	570
	All	-1,410	-1,440	-890	0	950

SX.42 Placed 18 year old applicants from Scotland by sex: 8 days after A level results day

Placed 18 year old applicants: change relative to 2014 cycle totals

Men
Women



SX.43 Placed 18 year old applicants from Scotland by sex: 8 days after A level results day

Applicant Status	Sex	2011	2012	2013	2014	2015
Placed	Men	6,020	5,940	6,000	5,940	5,910
	Women	7,470	7,650	7,680	7,990	8,110
	All	13,490	13,590	13,670	13,920	14,020

SX.44 Placed 18 year old applicants from Scotland by sex: 8 days after A level results day

Placed 18 year old applicants: change relative to 2014 cycle totals

Applicant Status	Sex	2011	2012	2013	2014	2015
Placed	Men	1%	0%	1%	0%	-0%
	Women	-6%	-4%	-4%	0%	1%
	All	-3%	-2%	-2%	0%	1%

SX.45 Placed 18 year old applicants from Scotland by sex: 8 days after A level results day

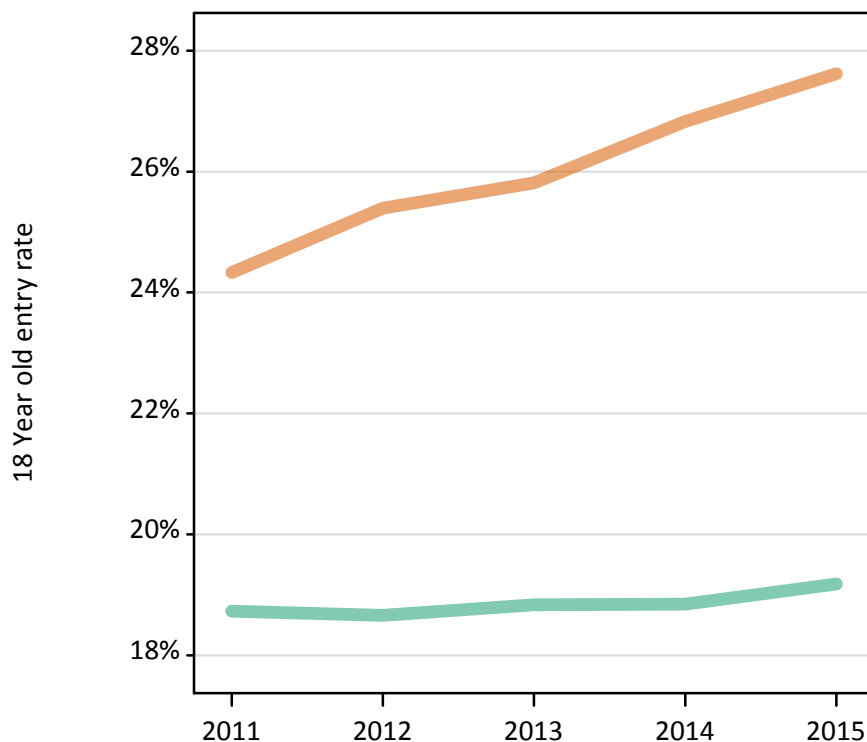
Placed 18 year old applicants: absolute change relative to 2014 cycle totals

Applicant Status	Sex	2011	2012	2013	2014	2015
Placed	Men	80	0	60	0	-30
	Women	-510	-340	-310	0	120
	All	-430	-340	-250	0	90

SX.46 Placed 18 year old applicants from Scotland by sex: 8 days after A level results day

Placed 18 year old applicants: entry rate

Men
Women



SX.47 Placed 18 year old applicants from Scotland by sex: 8 days after A level results day

Placed 18 year old applicants: entry rate

Applicant Status	Sex	2011	2012	2013	2014	2015
Placed	Men	18.7%	18.7%	18.8%	18.8%	19.2%
	Women	24.3%	25.4%	25.8%	26.8%	27.6%
	All	21.5%	21.9%	22.2%	22.7%	23.3%

SX.48 Placed 18 year old applicants from Scotland by sex: 8 days after A level results day

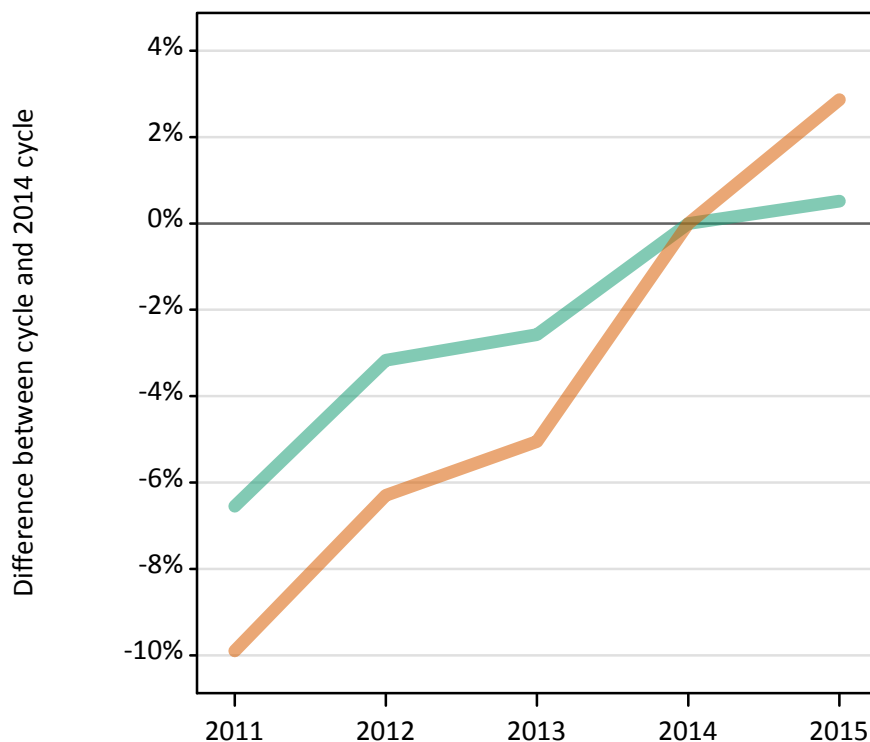
Placed 18 year old applicants: entry rate (indexed to 100 = Men)

Applicant Status	Sex	2011	2012	2013	2014	2015
Placed	Men	100	100	100	100	100
	Women	130	136	137	142	144

SX.49 Placed applicants from Wales by sex: 8 days after A level results day

Placed applicants: change relative to 2014 cycle totals

Men
Women



SX.50 Placed applicants from Wales by sex: 8 days after A level results day

Applicant Status	Sex	2011	2012	2013	2014	2015
Placed	Men	7,290	7,560	7,600	7,800	7,840
	Women	9,580	9,970	10,100	10,640	10,940
	All	16,870	17,520	17,700	18,440	18,780

SX.51 Placed applicants from Wales by sex: 8 days after A level results day

Placed applicants: change relative to 2014 cycle totals

Applicant Status	Sex	2011	2012	2013	2014	2015
Placed	Men	-7%	-3%	-3%	0%	1%
	Women	-10%	-6%	-5%	0%	3%
	All	-8%	-5%	-4%	0%	2%

SX.52 Placed applicants from Wales by sex: 8 days after A level results day

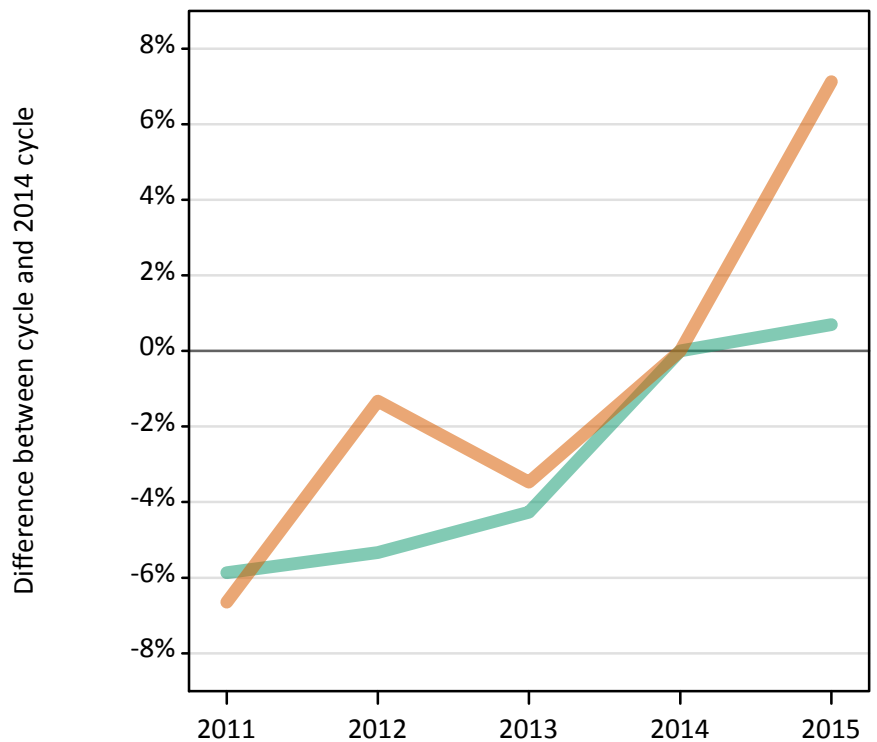
Placed applicants: absolute change relative to 2014 cycle totals

Applicant Status	Sex	2011	2012	2013	2014	2015
Placed	Men	-510	-250	-200	0	40
	Women	-1,050	-670	-540	0	310
	All	-1,560	-920	-740	0	350

SX.53 Placed 18 year old applicants from Wales by sex: 8 days after A level results day

Placed 18 year old applicants: change relative to 2014 cycle totals

Men
Women



SX.54 Placed 18 year old applicants from Wales by sex: 8 days after A level results day

Applicant Status	Sex	2011	2012	2013	2014	2015
Placed	Men	4,060	4,080	4,130	4,310	4,340
	Women	5,270	5,570	5,450	5,640	6,040
	All	9,320	9,650	9,570	9,950	10,380

SX.55 Placed 18 year old applicants from Wales by sex: 8 days after A level results day

Placed 18 year old applicants: change relative to 2014 cycle totals

Applicant Status	Sex	2011	2012	2013	2014	2015
Placed	Men	-6%	-5%	-4%	0%	1%
	Women	-7%	-1%	-3%	0%	7%
	All	-6%	-3%	-4%	0%	4%

SX.56 Placed 18 year old applicants from Wales by sex: 8 days after A level results day

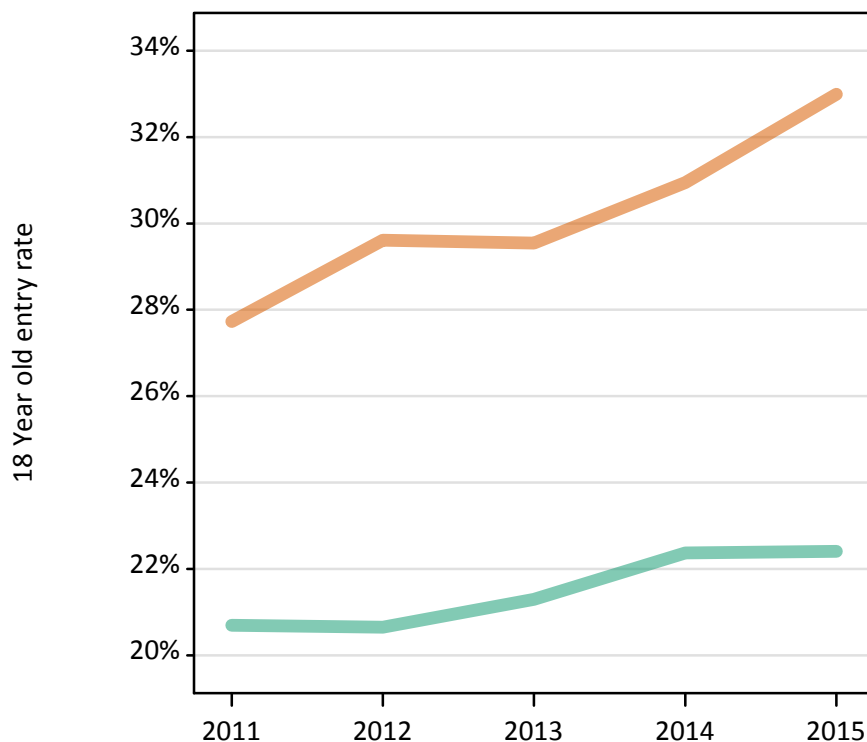
Placed 18 year old applicants: absolute change relative to 2014 cycle totals

Applicant Status	Sex	2011	2012	2013	2014	2015
Placed	Men	-250	-230	-180	0	30
	Women	-380	-80	-200	0	400
	All	-630	-310	-380	0	430

SX.57 Placed 18 year old applicants from Wales by sex: 8 days after A level results day

Placed 18 year old applicants: entry rate

Men
Women



SX.58 Placed 18 year old applicants from Wales by sex: 8 days after A level results day

Placed 18 year old applicants: entry rate

Applicant Status	Sex	2011	2012	2013	2014	2015
Placed	Men	20.7%	20.6%	21.3%	22.4%	22.4%
	Women	27.7%	29.6%	29.5%	30.9%	33.0%
	All	24.2%	25.0%	25.3%	26.5%	27.6%

SX.59 Placed 18 year old applicants from Wales by sex: 8 days after A level results day

Placed 18 year old applicants: entry rate (indexed to 100 = Men)

Applicant Status	Sex	2011	2012	2013	2014	2015
Placed	Men	100	100	100	100	100
	Women	134	143	139	138	147

SX.60 Placed applicants from the EU (excluding the UK) by sex: 8 days after A level results day

Placed applicants: change relative to 2014 cycle totals

Men
Women



SX.61 Placed applicants from the EU (excluding the UK) by sex: 8 days after A level results day

Applicant Status	Sex	2011	2012	2013	2014	2015
Placed	Men	10,990	9,390	9,880	10,440	11,320
	Women	13,520	11,820	12,560	13,890	15,460
	All	24,500	21,210	22,440	24,330	26,780

SX.62 Placed applicants from the EU (excluding the UK) by sex: 8 days after A level results day

Placed applicants: change relative to 2014 cycle totals

Applicant Status	Sex	2011	2012	2013	2014	2015
Placed	Men	5%	-10%	-5%	0%	8%
	Women	-3%	-15%	-10%	0%	11%
	All	1%	-13%	-8%	0%	10%

SX.63 Placed applicants from the EU (excluding the UK) by sex: 8 days after A level results day

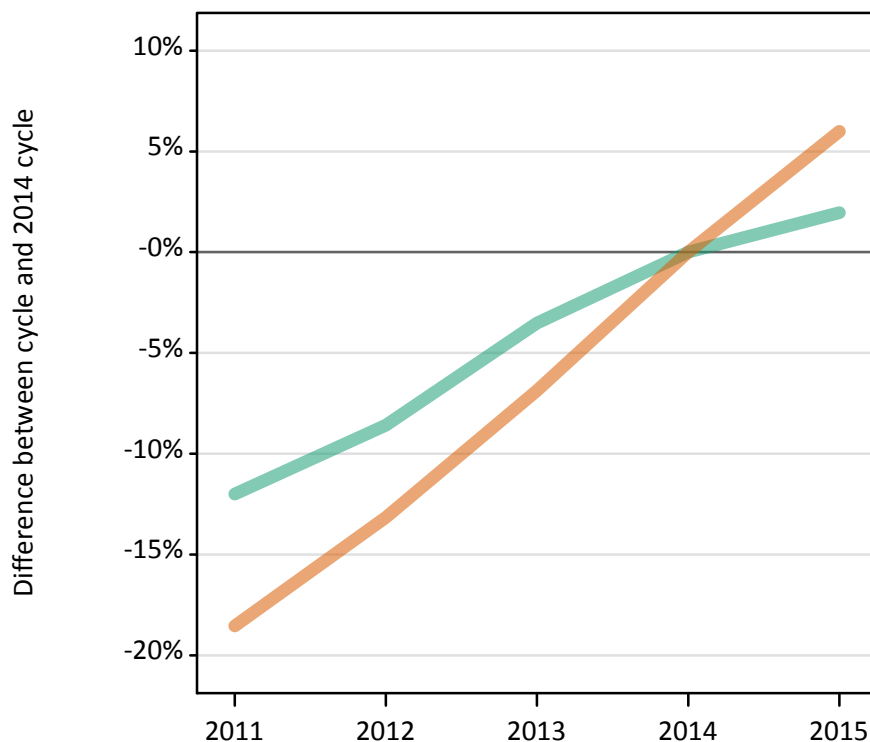
Placed applicants: absolute change relative to 2014 cycle totals

Applicant Status	Sex	2011	2012	2013	2014	2015
Placed	Men	550	-1,050	-550	0	880
	Women	-380	-2,080	-1,340	0	1,570
	All	170	-3,120	-1,890	0	2,450

SX.64 Placed applicants from overseas (not EU) by sex: 8 days after A level results day

Placed applicants: change relative to 2014 cycle totals

Men
Women



SX.65 Placed applicants from overseas (not EU) by sex: 8 days after A level results day

Applicant Status	Sex	2011	2012	2013	2014	2015
Placed	Men	13,210	13,730	14,490	15,020	15,310
	Women	13,990	14,910	15,990	17,170	18,200
	All	27,200	28,640	30,480	32,190	33,510

SX.66 Placed applicants from overseas (not EU) by sex: 8 days after A level results day

Placed applicants: change relative to 2014 cycle totals

Applicant Status	Sex	2011	2012	2013	2014	2015
Placed	Men	-12%	-9%	-4%	0%	2%
	Women	-19%	-13%	-7%	0%	6%
	All	-15%	-11%	-5%	0%	4%

SX.67 Placed applicants from overseas (not EU) by sex: 8 days after A level results day

Placed applicants: absolute change relative to 2014 cycle totals

Applicant Status	Sex	2011	2012	2013	2014	2015
Placed	Men	-1,800	-1,290	-530	0	300
	Women	-3,180	-2,260	-1,180	0	1,030
	All	-4,990	-3,550	-1,710	0	1,320