

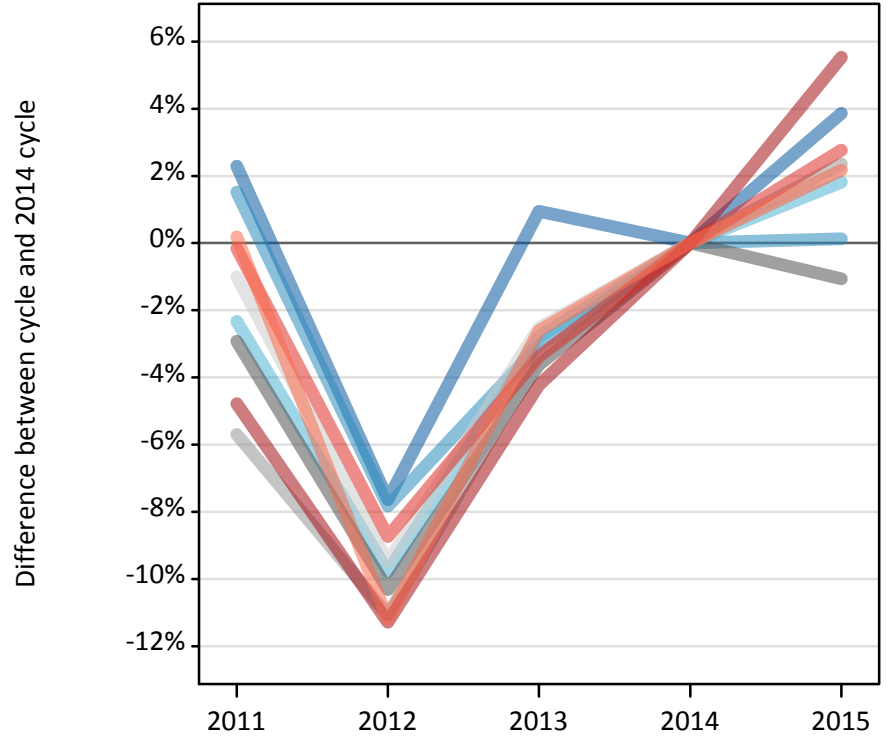
# Daily Clearing Analysis: Region

Analysis at 00:05 on Thursday 20 August 2015 (7 days after A level results day)

R.1 Placed applicants by region of domicile: 7 days after A level results day

Placed applicants: change relative to 2014 cycle totals

- North East
- North West
- Yorkshire and The Humber
- East Midlands
- West Midlands
- East of England
- London
- South East
- South West



R.2 Placed applicants by region of domicile: 7 days after A level results day

Applicant Status	Domicile	2011	2012	2013	2014	2015
Placed	North East	15,150	13,680	14,950	14,810	15,390
	North West	47,280	42,930	45,160	46,580	46,640
	Yorkshire and The Humber	31,140	28,760	30,990	31,880	32,460
	East Midlands	26,300	24,300	26,110	27,090	26,800
	West Midlands	34,770	32,790	35,610	36,870	37,740
	East of England	35,370	32,330	34,830	35,720	36,520
	London	59,780	55,690	60,130	62,780	66,250
	South East	55,490	50,730	53,710	55,580	57,120
	South West	31,870	28,250	30,980	31,810	32,500
	(England total)	337,140	309,450	332,450	343,110	351,400
	Scotland	27,540	27,460	27,940	28,810	31,700
	Northern Ireland	13,030	12,140	13,440	13,470	13,160
	Wales	16,670	17,360	17,550	18,290	18,630
	UK	394,380	366,410	391,380	403,690	414,900

### R.3 Placed applicants by region of domicile: 7 days after A level results day

Placed applicants: change relative to 2014 cycle totals

Applicant Status	Domicile	2011	2012	2013	2014	2015
Placed	North East	2%	-8%	1%	0%	4%
	North West	2%	-8%	-3%	0%	0%
	Yorkshire and The Humber	-2%	-10%	-3%	0%	2%
	East Midlands	-3%	-10%	-4%	0%	-1%
	West Midlands	-6%	-11%	-3%	0%	2%
	East of England	-1%	-10%	-3%	0%	2%
	London	-5%	-11%	-4%	0%	6%
	South East	-0%	-9%	-3%	0%	3%
	South West	0%	-11%	-3%	0%	2%
	(England total)	-2%	-10%	-3%	0%	2%
	Scotland	-4%	-5%	-3%	0%	10%
	Northern Ireland	-3%	-10%	-0%	0%	-2%
	Wales	-9%	-5%	-4%	0%	2%
	UK	-2%	-9%	-3%	0%	3%

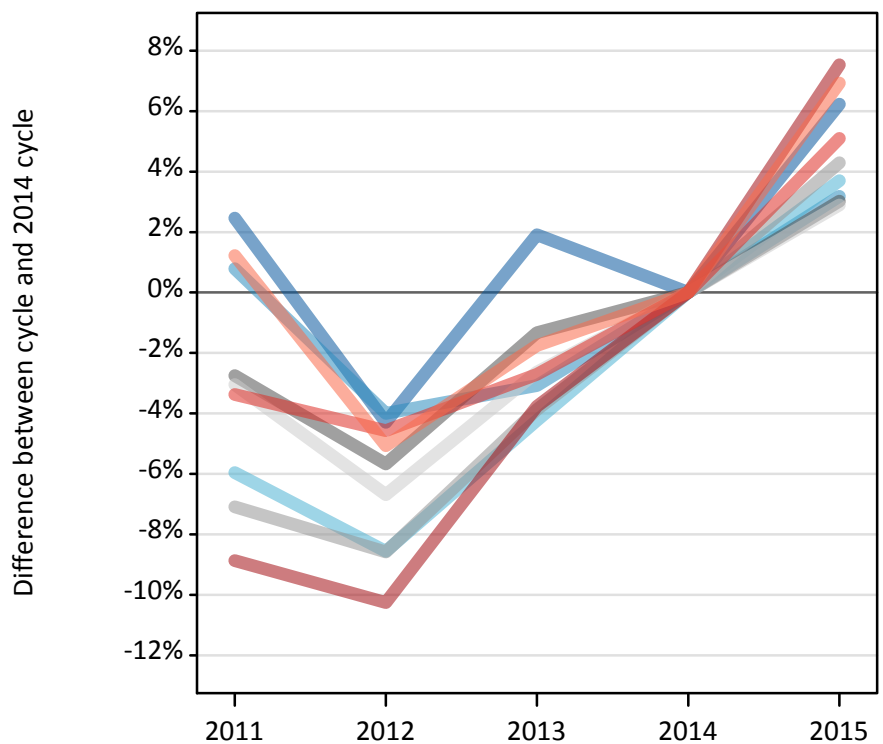
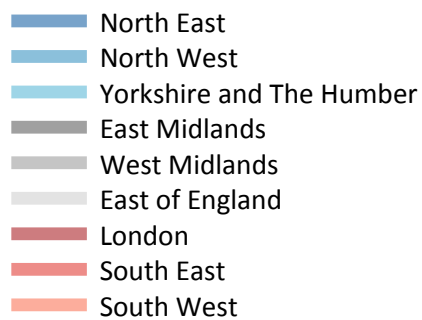
### R.4 Placed applicants by region of domicile: 7 days after A level results day

Placed applicants: absolute change relative to 2014 cycle totals

Applicant Status	Domicile	2011	2012	2013	2014	2015
Placed	North East	340	-1,130	140	0	570
	North West	710	-3,650	-1,420	0	60
	Yorkshire and The Humber	-740	-3,120	-890	0	580
	East Midlands	-790	-2,800	-980	0	-290
	West Midlands	-2,100	-4,080	-1,260	0	870
	East of England	-360	-3,390	-900	0	790
	London	-3,000	-7,090	-2,650	0	3,470
	South East	-90	-4,850	-1,870	0	1,540
	South West	60	-3,560	-830	0	690
	(England total)	-5,970	-33,660	-10,660	0	8,290
	Scotland	-1,280	-1,360	-880	0	2,890
	Northern Ireland	-440	-1,330	-30	0	-300
	Wales	-1,620	-930	-740	0	340
	UK	-9,310	-37,270	-12,310	0	11,210

### R.5 Placed 18 year old applicants by region of domicile: 7 days after A level results day

Placed 18 year old applicants: change relative to 2014 cycle totals



### R.6 Placed 18 year old applicants by region of domicile: 7 days after A level results day

Applicant Status	Domicile	2011	2012	2013	2014	2015
Placed	North East	8,000	7,470	7,960	7,810	8,290
	North West	26,100	24,860	25,100	25,890	26,720
	Yorkshire and The Humber	16,780	16,320	17,090	17,850	18,510
	East Midlands	14,520	14,090	14,740	14,930	15,380
	West Midlands	18,620	18,320	19,260	20,040	20,900
	East of England	20,620	19,850	20,710	21,270	21,880
	London	29,140	28,700	30,770	31,980	34,390
	South East	30,780	30,400	30,990	31,850	33,470
	South West	16,290	15,280	15,810	16,100	17,210
	(England total)	180,850	175,270	182,420	187,710	196,750
	Scotland	13,890	13,980	14,060	14,270	14,380
	Northern Ireland	8,290	7,860	8,370	8,190	8,060
	Wales	9,230	9,600	9,530	9,900	10,330
	UK	212,260	206,710	214,380	220,070	229,520

## R.7 Placed 18 year old applicants by region of domicile: 7 days after A level results day

Placed 18 year old applicants: change relative to 2014 cycle totals

Applicant Status	Domicile	2011	2012	2013	2014	2015
Placed	North East	2%	-4%	2%	0%	6%
	North West	1%	-4%	-3%	0%	3%
	Yorkshire and The Humber	-6%	-9%	-4%	0%	4%
	East Midlands	-3%	-6%	-1%	0%	3%
	West Midlands	-7%	-9%	-4%	0%	4%
	East of England	-3%	-7%	-3%	0%	3%
	London	-9%	-10%	-4%	0%	8%
	South East	-3%	-5%	-3%	0%	5%
	South West	1%	-5%	-2%	0%	7%
	(England total)	-4%	-7%	-3%	0%	5%
	Scotland	-3%	-2%	-1%	0%	1%
	Northern Ireland	1%	-4%	2%	0%	-2%
	Wales	-7%	-3%	-4%	0%	4%
	UK	-4%	-6%	-3%	0%	4%

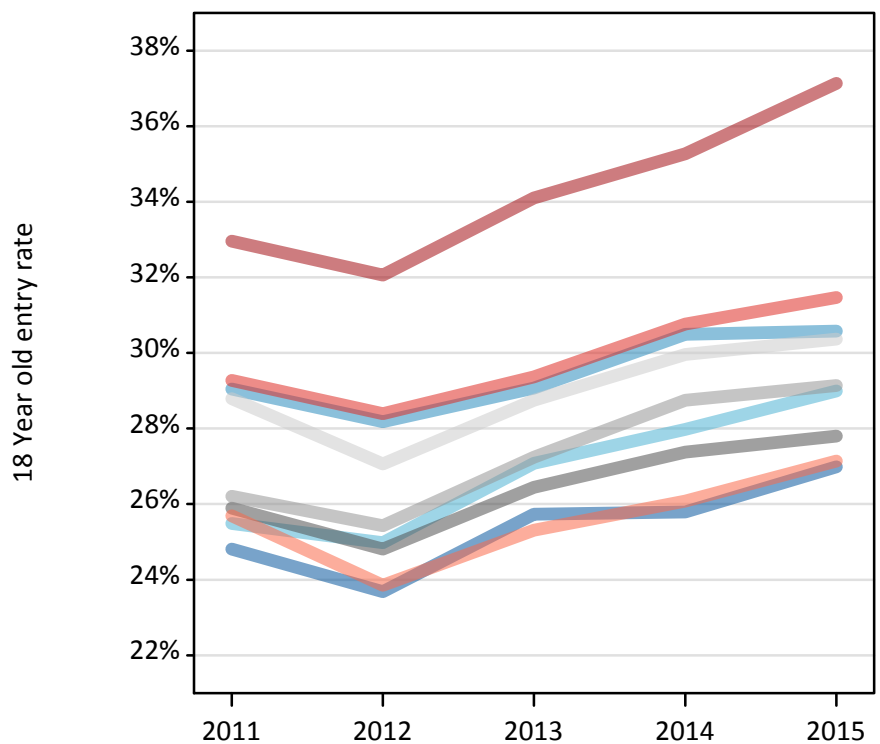
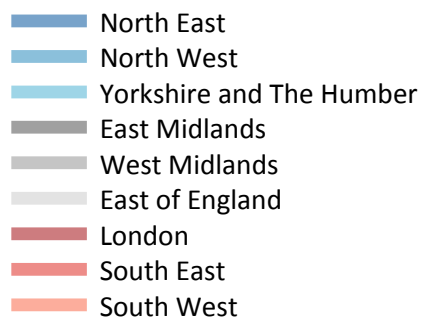
## R.8 Placed 18 year old applicants by region of domicile: 7 days after A level results day

Placed 18 year old applicants: absolute change relative to 2014 cycle totals

Applicant Status	Domicile	2011	2012	2013	2014	2015
Placed	North East	190	-340	150	0	490
	North West	210	-1,030	-800	0	820
	Yorkshire and The Humber	-1,060	-1,530	-760	0	660
	East Midlands	-410	-850	-200	0	450
	West Midlands	-1,420	-1,720	-780	0	860
	East of England	-650	-1,420	-560	0	620
	London	-2,840	-3,280	-1,200	0	2,410
	South East	-1,070	-1,460	-860	0	1,620
	South West	200	-820	-280	0	1,120
	(England total)	-6,860	-12,440	-5,290	0	9,040
	Scotland	-380	-290	-210	0	100
	Northern Ireland	100	-330	190	0	-120
	Wales	-670	-300	-370	0	430
	UK	-7,810	-13,360	-5,690	0	9,450

### R.9 Placed 18 year old applicants by region of domicile: 7 days after A level results day

Placed 18 year old applicants: entry rate



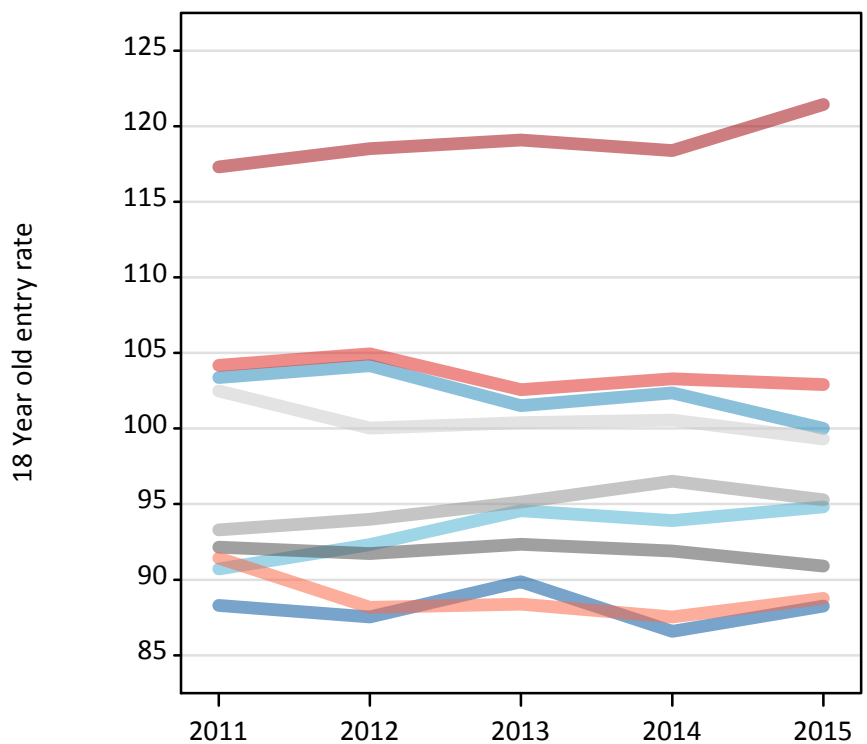
### R.10 Placed 18 year old applicants by region of domicile: 7 days after A level results day

Placed 18 year old applicants: entry rate

Applicant Status	Domicile	2011	2012	2013	2014	2015
Placed	North East	24.8%	23.7%	25.7%	25.8%	27.0%
	North West	29.0%	28.2%	29.1%	30.5%	30.6%
	Yorkshire and The Humber	25.5%	25.0%	27.1%	28.0%	29.0%
	East Midlands	25.9%	24.8%	26.4%	27.4%	27.8%
	West Midlands	26.2%	25.4%	27.2%	28.8%	29.1%
	East of England	28.8%	27.1%	28.7%	30.0%	30.4%
	London	33.0%	32.1%	34.1%	35.3%	37.1%
	South East	29.3%	28.4%	29.4%	30.8%	31.5%
	South West	25.7%	23.9%	25.3%	26.1%	27.1%
	(England total)	28.1%	27.1%	28.6%	29.8%	30.6%
	Scotland	22.1%	22.6%	22.8%	23.3%	23.9%
	Northern Ireland	33.2%	31.3%	34.2%	33.7%	32.5%
	Wales	23.9%	24.9%	25.2%	26.4%	27.4%
	UK	27.6%	26.7%	28.2%	29.2%	30.0%

### R.11 Placed 18 year old applicants by region of domicile: 7 days after A level results day

Placed 18 year old applicants: entry rates (indexed to 100 = England)



### R.12 Placed 18 year old applicants by region of domicile: 7 days after A level results day

Placed 18 year old applicants: entry rate (indexed to 100 = England)

Applicant Status	Domicile	2011	2012	2013	2014	2015
Placed	North East	88	88	90	87	88
	North West	103	104	102	102	100
	Yorkshire and The Humber	91	92	95	94	95
	East Midlands	92	92	92	92	91
	West Midlands	93	94	95	97	95
	East of England	102	100	100	101	99
	London	117	119	119	118	121
	South East	104	105	103	103	103
	South West	91	88	88	88	89
	(England total)	100	100	100	100	100