

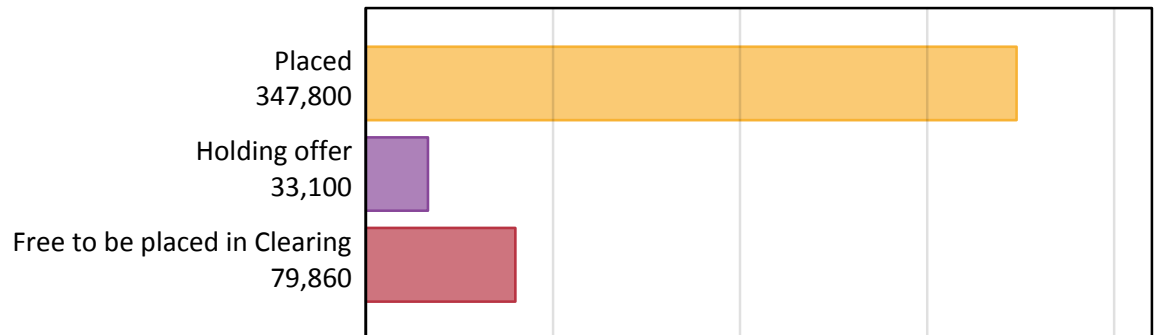
Daily Clearing Analysis: Overview

Analysis at 00:05 on Wednesday 19 August 2015 (6 days after A level results day)

A.1 Applicants by type and status from England, 2015 cycle

Applicant type	Status	2015
Main scheme	Placed (Clearing)	27,370
	Placed (Adjustment)	1,000
	Placed (Firm)	278,300
	Placed (Insurance)	27,630
	Placed (Other)	8,820
	Holding offer	33,100
	Free to be placed in Clearing	79,860
Direct to Clearing	Placed (Direct to Clearing)	4,690
	Other (Direct to Clearing)	6,490
All applicants	Placed	347,800

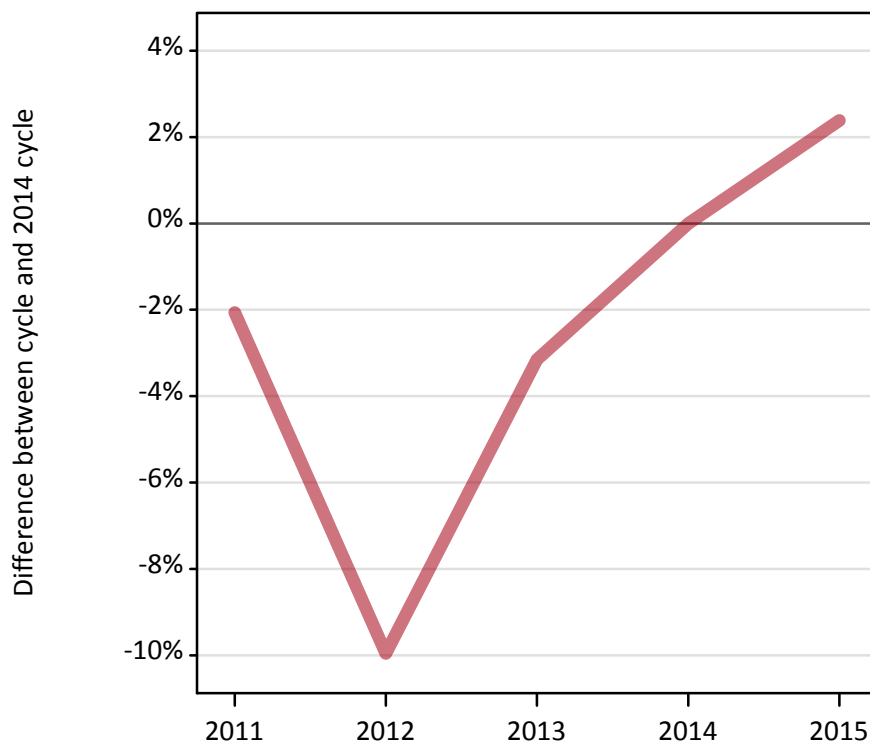
A.2 Summary of applicants who are placed, holding offers or free to be placed in Clearing (England)



A.3 All placed applicants from England: 6 days after A level results day

All placed applicants: difference between cycle and 2014 cycle

Placed



A.4 All placed applicants from England: 6 days after A level results day

All placed applicants: applicants at 6 days after A level results day

Applicant type	Status	2011	2012	2013	2014	2015
All applicants	Placed	332,680	305,870	328,990	339,690	347,800

A.5 All placed applicants from England: 6 days after A level results day

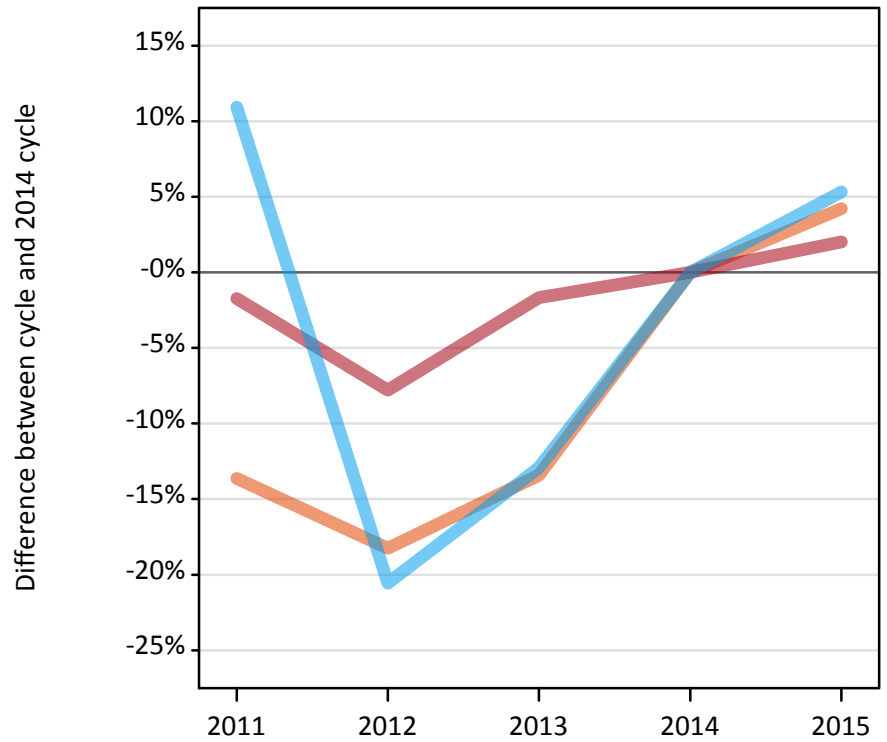
All placed applicants: difference between cycle and 2014 cycle

Applicant type	Status	2011	2012	2013	2014	2015
All applicants	Placed	-2%	-10%	-3%	0%	2%

A.6 Placed main scheme applicants from England: 6 days after A level results day

Selected placed routes: difference between cycle and 2014 cycle

- Placed (Clearing)
- Placed (Firm)
- Placed (Insurance)



A.7 Placed main scheme applicants from England: 6 days after A level results day

All Main scheme placed routes (excluding Adjustment): applicants at 6 days after A level results day

Applicant type	Status	2011	2012	2013	2014	2015
Main scheme	Placed (Clearing)	22,680	21,470	22,740	26,260	27,370
	Placed (Firm)	268,100	251,560	268,240	272,810	278,300
	Placed (Insurance)	29,110	20,840	22,850	26,240	27,630
	Placed (Other)	9,580	7,290	9,240	9,070	8,820

A.8 Placed main scheme applicants from England: 6 days after A level results day

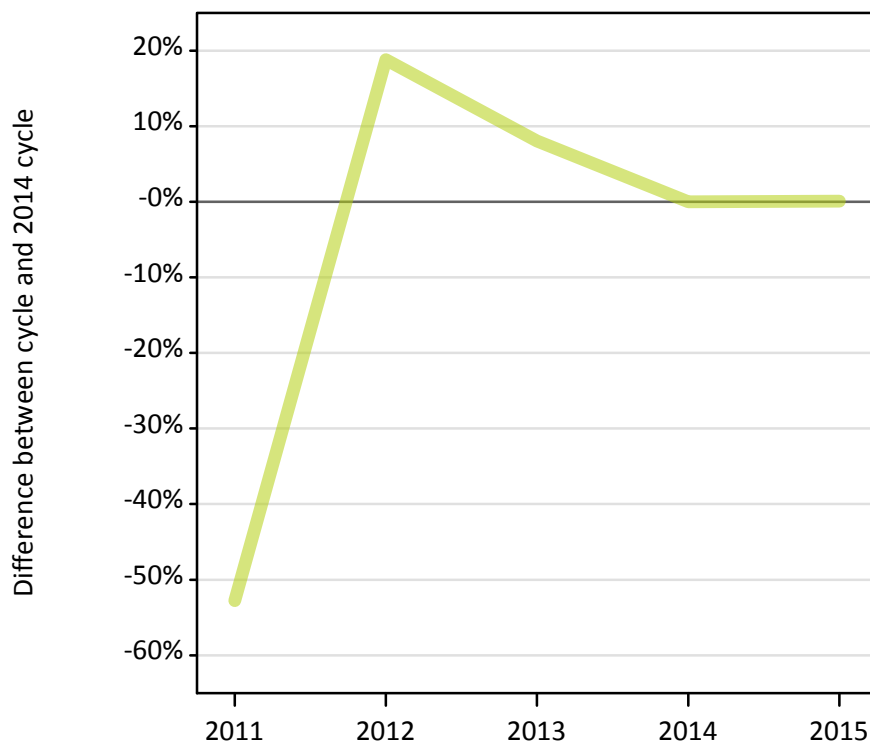
Selected placed routes: difference between cycle and 2014 cycle

Applicant type	Status	2011	2012	2013	2014	2015
Main scheme	Placed (Clearing)	-14%	-18%	-13%	0%	4%
	Placed (Firm)	-2%	-8%	-2%	0%	2%
	Placed (Insurance)	11%	-21%	-13%	0%	5%

A.9 Main scheme applicants placed through adjustment: 6 days after A level results day

Placed through adjustment: difference between cycle and 2014 cycle

Placed (Adjustment)



A.10 Main scheme applicants placed through adjustment: 6 days after A level results day

Placed through adjustment: applicants at 6 days after A level results day

Applicant type	Status	2011	2012	2013	2014	2015
Main scheme	Placed (Adjustment)	470	1,180	1,080	1,000	1,000

A.11 Main scheme applicants placed through adjustment: 6 days after A level results day

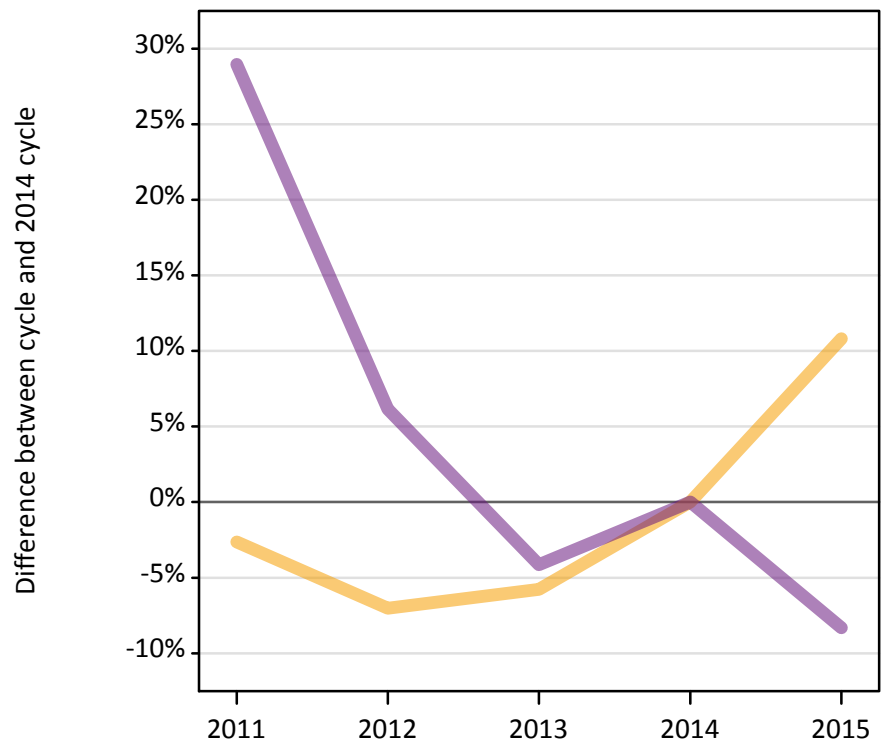
Placed through adjustment: difference between cycle and 2014 cycle

Applicant type	Status	2011	2012	2013	2014	2015
Main scheme	Placed (Adjustment)	-53%	19%	8%	0%	0%

A.12 Main scheme applicants not currently placed from England: 6 days after A level results day

Applicants in unplaced states: difference between cycle and 2014 cycle

— Holding offer
— Free to be placed in Clearing



A.13 Main scheme applicants not currently placed from England: 6 days after A level results day

Applicants in unplaced states: applicants at 6 days after A level results day

Applicant type	Status	2011	2012	2013	2014	2015
Main scheme	Holding offer	29,080	27,770	28,140	29,870	33,100
	Free to be placed in Clearing	112,340	92,470	83,500	87,110	79,860

A.14 Main scheme applicants not currently placed from England: 6 days after A level results day

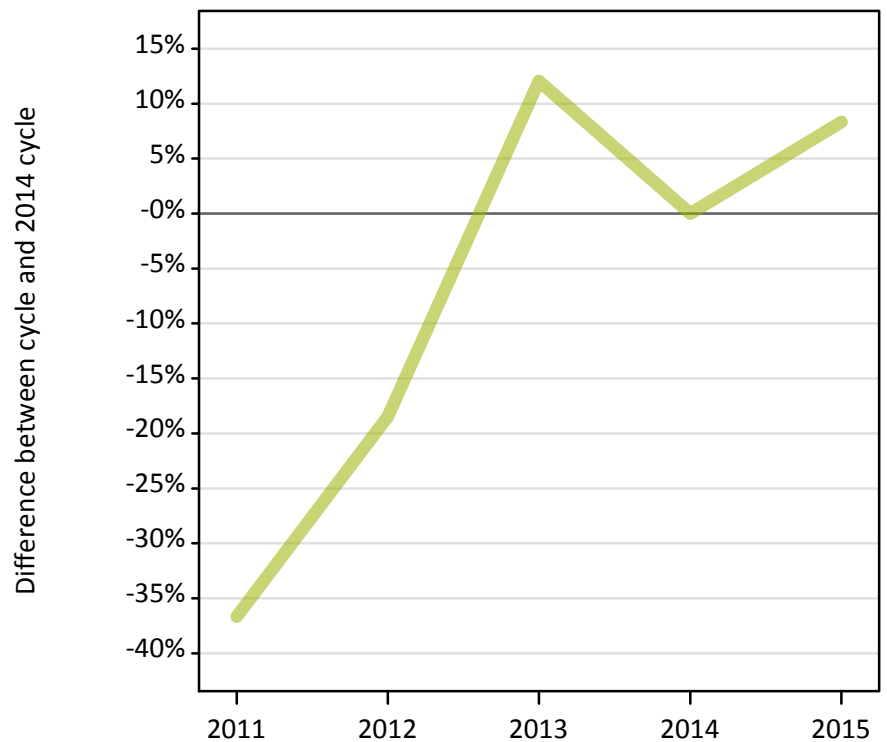
Applicants in unplaced states: difference between cycle and 2014 cycle

Applicant type	Status	2011	2012	2013	2014	2015
Main scheme	Holding offer	-3%	-7%	-6%	0%	11%
	Free to be placed in Clearing	29%	6%	-4%	0%	-8%

A.15 Direct to Clearing applicants from England: 6 days after A level results day

Placed (Direct to Clearing): difference between cycle and 2014 cycle

Placed (Direct to Clearing)



A.16 Direct to Clearing applicants from England: 6 days after A level results day

Direct to Clearing 6 days after A level results day

Applicant type	Status	2011	2012	2013	2014	2015
Direct to Clearing	Placed (Direct to Clearing)	2,740	3,530	4,850	4,330	4,690
	Other (Direct to Clearing)	7,080	5,860	6,730	5,790	6,490

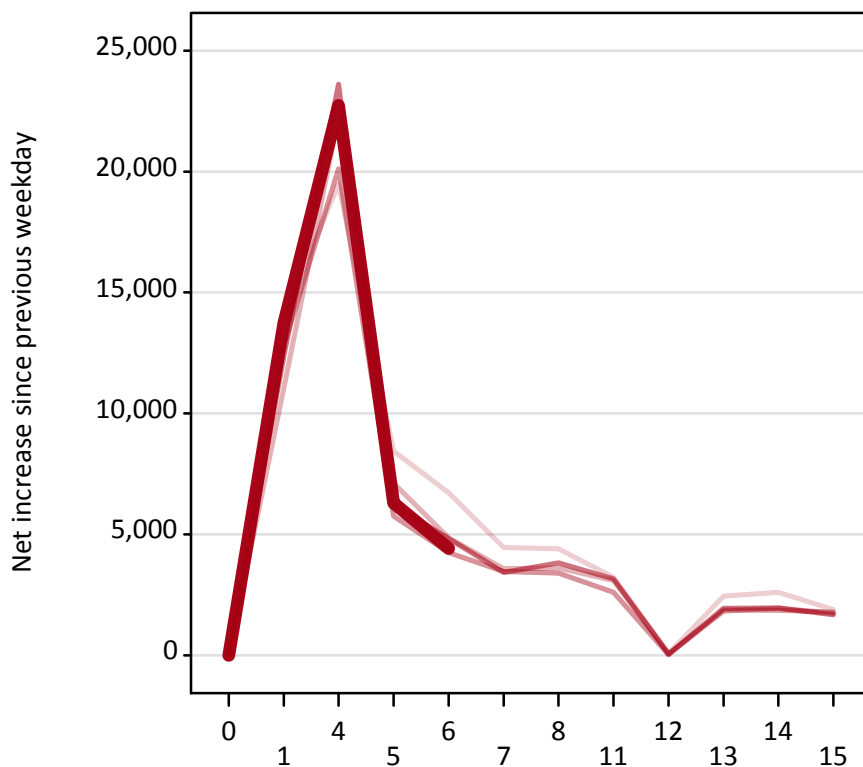
A.17 Direct to Clearing applicants from England: 6 days after A level results day

Placed (Direct to Clearing): difference between cycle and 2014 cycle

Applicant type	Status	2011	2012	2013	2014	2015
Direct to Clearing	Placed (Direct to Clearing)	-37%	-18%	12%	0%	8%

A.18 All Placed: Daily net change (from England)

Net increase since previous weekday (2015 cycle up to 6 days after A level results day)



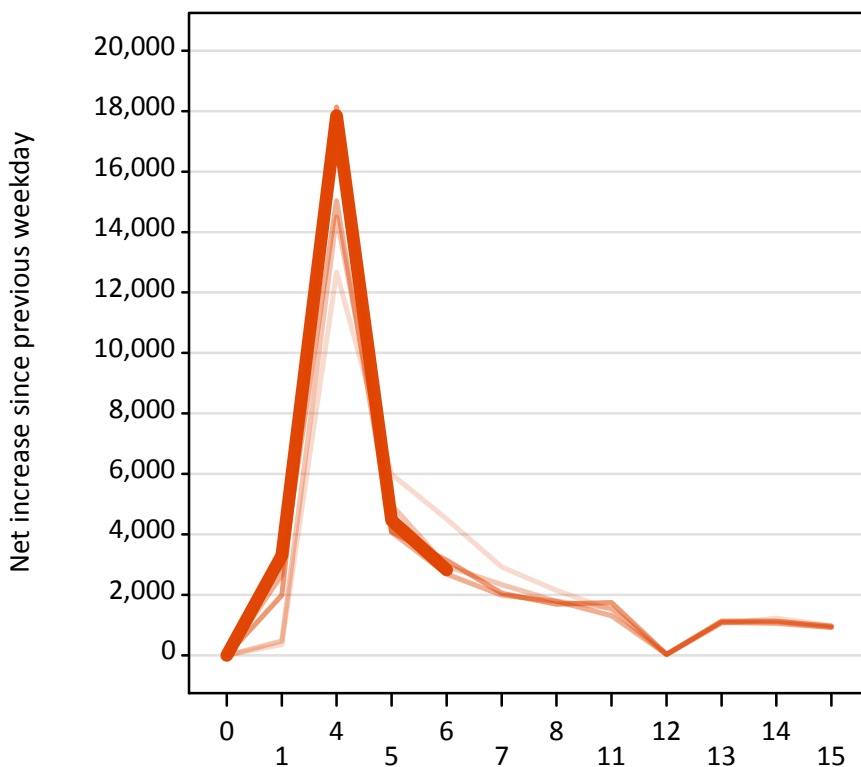
A.19 All Placed: Daily net change (from England)

Net increase since previous weekday (2015 cycle up to 6 days after A level results day)

Applicant status, days since A level results day		2011	2012	2013	2014	2015
All Placed	0	0	0	0	0	0
	1	14,070	11,050	12,810	12,380	13,730
	4	19,480	22,270	20,120	23,620	22,730
	5	8,440	7,120	5,750	6,220	6,300
	6	6,730	4,860	4,240	4,830	4,410
	7	4,460	3,580	3,470	3,420	
	8	4,410	3,610	3,400	3,830	
	11	3,230	3,090	2,610	3,160	
	12	80	70	30	50	
	13	2,440	1,820	1,880	1,940	
	14	2,600	1,950	1,860	1,960	
	15	1,890	1,730	1,780	1,680	

A.20 Placed through Clearing only: Daily net change (from England)

Net increase since previous weekday (2015 cycle up to 6 days after A level results day)



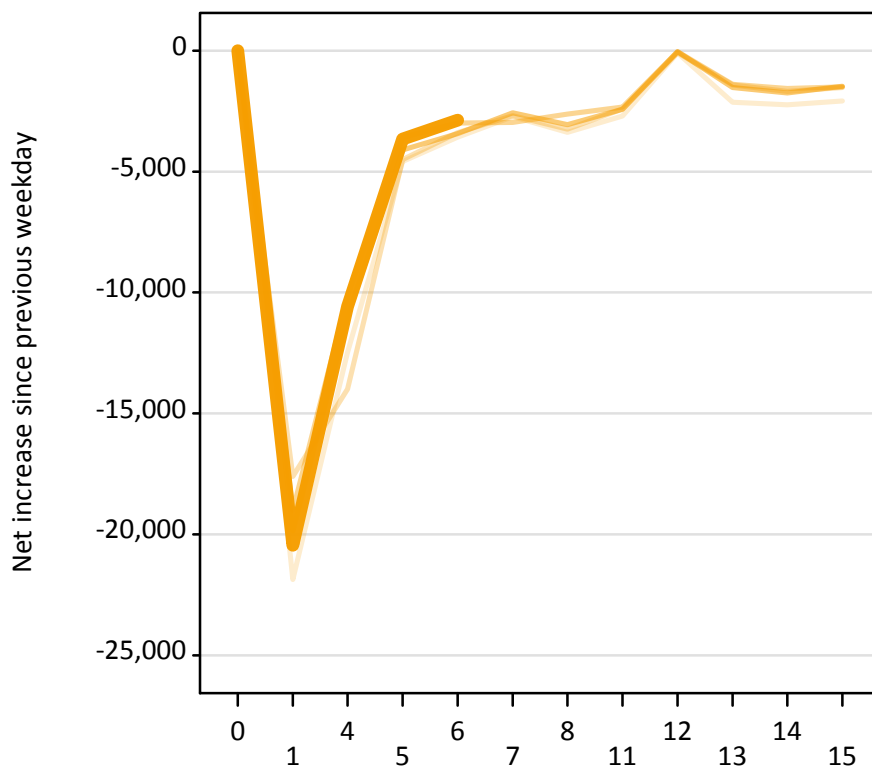
A.21 Placed through Clearing only: Daily net change (from England)

Net increase since previous weekday (2015 cycle up to 6 days after A level results day)

Applicant status, days since A level results day		2011	2012	2013	2014	2015
Placed through Clearing only	0	0	0	0	0	0
	1	360	480	2,650	1,990	3,300
	4	12,670	14,500	15,030	18,140	17,850
	5	5,990	4,980	4,070	4,080	4,470
	6	4,510	2,950	2,690	3,140	2,830
	7	2,920	2,330	1,980	2,060	
	8	2,150	1,780	1,780	1,690	
	11	1,500	1,570	1,310	1,740	
	12	20	30	30	30	
	13	1,050	1,100	1,090	1,130	
	14	1,230	1,100	1,050	1,130	
	15	990	930	910	960	

A.22 Holding Offer: Daily net change (from England)

Net increase since previous weekday (2015 cycle up to 6 days after A level results day)



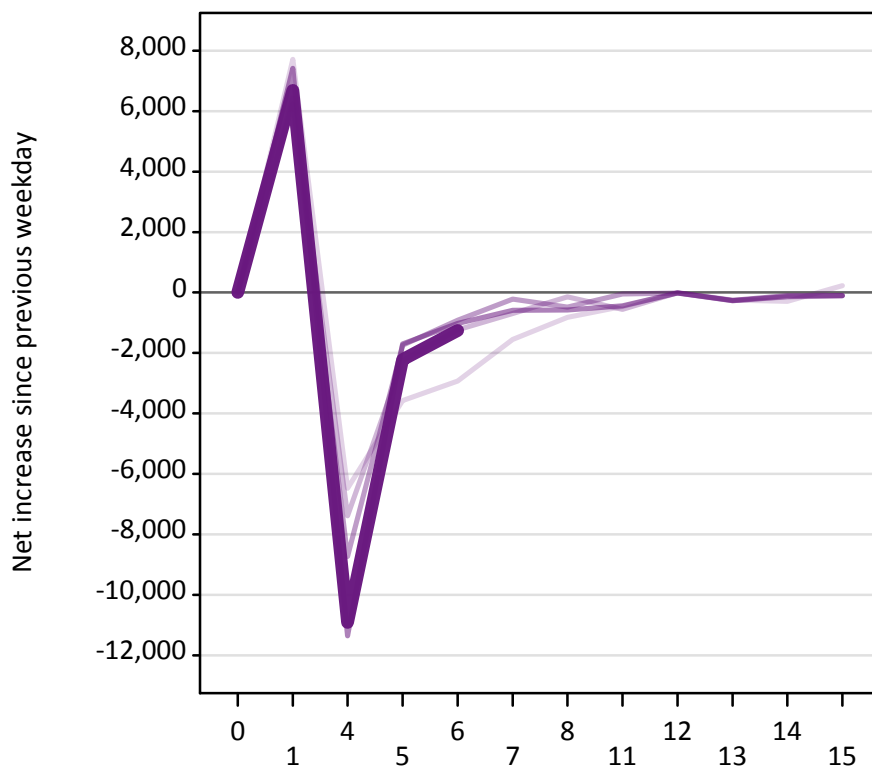
A.23 Holding Offer: Daily net change (from England)

Net increase since previous weekday (2015 cycle up to 6 days after A level results day)

Applicant status, days since A level results day		2011	2012	2013	2014	2015
Holding Offer	0	0	0	0	0	0
	1	-21,870	-17,610	-19,020	-19,850	-20,460
	4	-12,470	-13,990	-10,150	-11,010	-10,580
	5	-4,580	-4,500	-3,590	-4,110	-3,660
	6	-3,570	-3,390	-3,000	-3,430	-2,870
	7	-2,730	-2,690	-2,970	-2,570	
	8	-3,380	-3,250	-2,620	-3,070	
	11	-2,710	-2,410	-2,330	-2,430	
	12	-90	-90	-40	-50	
	13	-2,140	-1,410	-1,390	-1,530	
	14	-2,240	-1,680	-1,570	-1,760	
	15	-2,070	-1,520	-1,500	-1,470	

A.24 Free to be placed in Clearing: Daily net change (from England)

Net increase since previous weekday (2015 cycle up to 6 days after A level results day)



A.25 Free to be placed in Clearing: Daily net change (from England)

Net increase since previous weekday (2015 cycle up to 6 days after A level results day)

Applicant status, days since A level results day		2011	2012	2013	2014	2015
Free to be placed in Clearing	0	0	0	0	0	0
	1	7,720	6,450	6,240	7,420	6,690
	4	-6,480	-7,390	-8,730	-11,360	-10,920
	5	-3,570	-2,260	-1,750	-1,700	-2,220
	6	-2,930	-1,240	-910	-1,020	-1,260
	7	-1,560	-690	-220	-590	
	8	-820	-140	-480	-580	
	11	-470	-560	-50	-440	
	12	-10	-10	-20	-10	
	13	-250	-270	-270	-260	
	14	-290	-150	-130	-100	
	15	220	-110	-100	-100	