

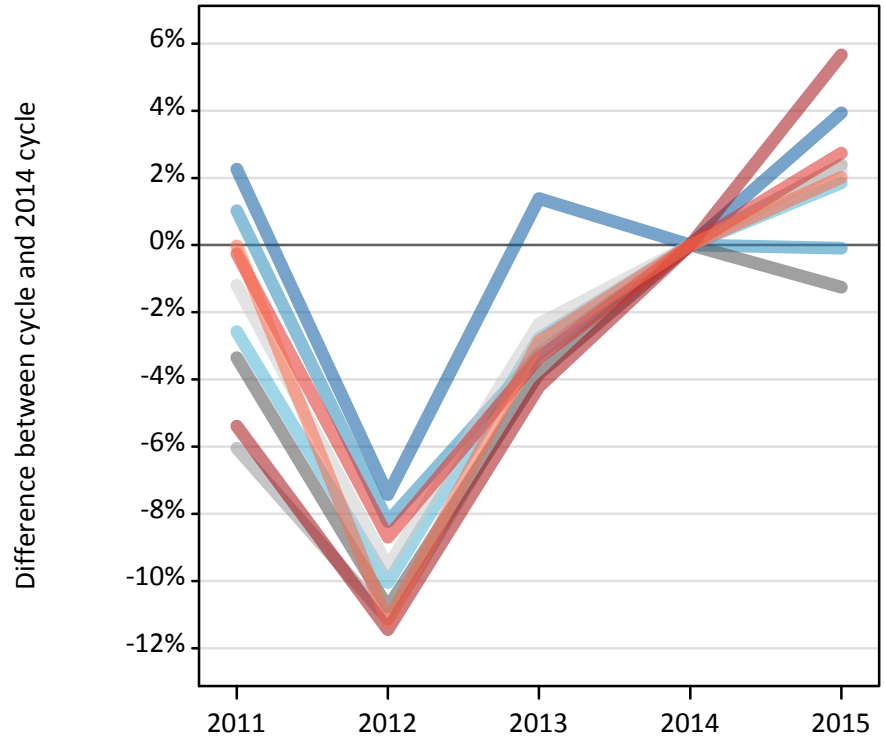
# Daily Clearing Analysis: Region

Analysis at 00:05 on Wednesday 19 August 2015 (6 days after A level results day - No Scot.X1)

RX.1 Placed applicants by region of domicile: 6 days after A level results day

Placed applicants: change relative to 2014 cycle totals

- North East
- North West
- Yorkshire and The Humber
- East Midlands
- West Midlands
- East of England
- London
- South East
- South West



RX.2 Placed applicants by region of domicile: 6 days after A level results day

Applicant Status	Domicile	2011	2012	2013	2014	2015
Placed	North East	15,000	13,580	14,870	14,670	15,250
	North West	46,640	42,370	44,680	46,170	46,130
	Yorkshire and The Humber	30,800	28,440	30,740	31,620	32,200
	East Midlands	26,010	24,010	25,880	26,910	26,570
	West Midlands	34,310	32,450	35,190	36,520	37,390
	East of England	34,990	32,030	34,580	35,420	36,210
	London	58,360	54,620	59,090	61,690	65,180
	South East	54,990	50,330	53,280	55,120	56,640
	South West	31,570	28,030	30,670	31,580	32,210
	(England total)	332,670	305,860	328,980	339,680	347,770
	Scotland	26,750	26,570	27,160	28,090	29,090
	Northern Ireland	12,770	11,840	13,190	13,190	12,900
	Wales	16,490	17,190	17,400	18,150	18,490
	UK	388,690	361,470	386,730	399,110	408,240

### RX.3 Placed applicants by region of domicile: 6 days after A level results day

Placed applicants: change relative to 2014 cycle totals

Applicant Status	Domicile	2011	2012	2013	2014	2015
Placed	North East	2%	-7%	1%	0%	4%
	North West	1%	-8%	-3%	0%	-0%
	Yorkshire and The Humber	-3%	-10%	-3%	0%	2%
	East Midlands	-3%	-11%	-4%	0%	-1%
	West Midlands	-6%	-11%	-4%	0%	2%
	East of England	-1%	-10%	-2%	0%	2%
	London	-5%	-11%	-4%	0%	6%
	South East	-0%	-9%	-3%	0%	3%
	South West	-0%	-11%	-3%	0%	2%
	(England total)	-2%	-10%	-3%	0%	2%
	Scotland	-5%	-5%	-3%	0%	4%
	Northern Ireland	-3%	-10%	0%	0%	-2%
	Wales	-9%	-5%	-4%	0%	2%
	UK	-3%	-9%	-3%	0%	2%

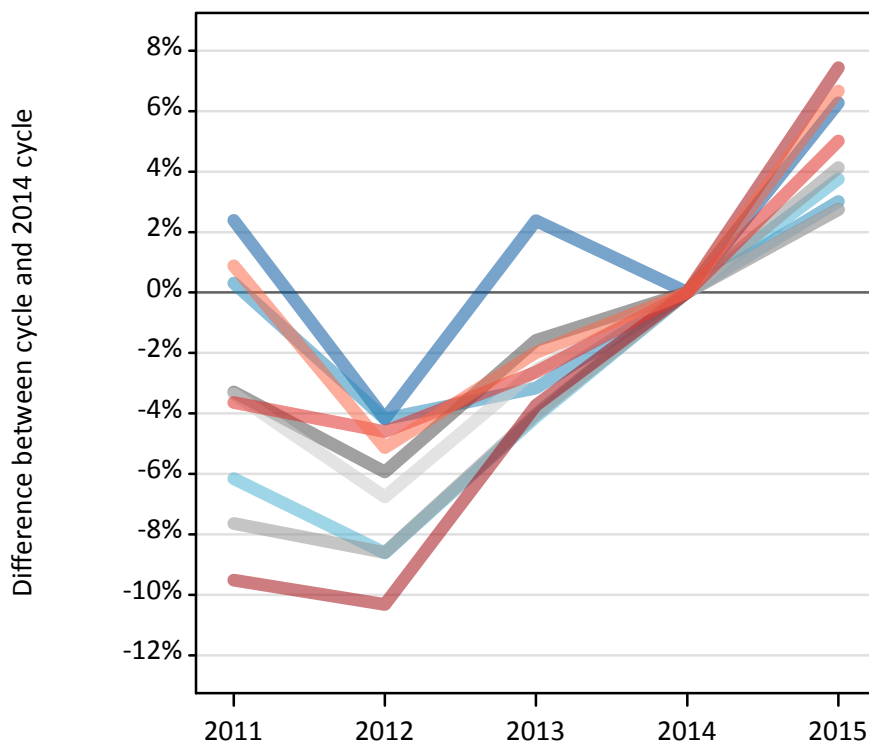
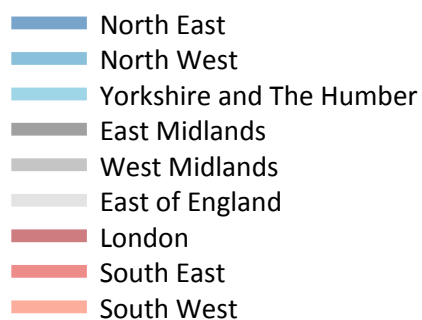
### RX.4 Placed applicants by region of domicile: 6 days after A level results day

Placed applicants: absolute change relative to 2014 cycle totals

Applicant Status	Domicile	2011	2012	2013	2014	2015
Placed	North East	330	-1,090	200	0	580
	North West	470	-3,800	-1,490	0	-40
	Yorkshire and The Humber	-810	-3,180	-880	0	590
	East Midlands	-900	-2,900	-1,030	0	-340
	West Midlands	-2,210	-4,060	-1,330	0	870
	East of England	-420	-3,390	-830	0	790
	London	-3,330	-7,060	-2,600	0	3,500
	South East	-140	-4,790	-1,850	0	1,510
	South West	-10	-3,550	-900	0	640
	(England total)	-7,010	-33,820	-10,700	0	8,090
	Scotland	-1,340	-1,520	-930	0	990
	Northern Ireland	-410	-1,340	10	0	-290
	Wales	-1,660	-960	-750	0	340
	UK	-10,430	-37,640	-12,380	0	9,130

### RX.5 Placed 18 year old applicants by region of domicile: 6 days after A level results day

Placed 18 year old applicants: change relative to 2014 cycle totals



### RX.6 Placed 18 year old applicants by region of domicile: 6 days after A level results day

Applicant Status	Domicile	2011	2012	2013	2014	2015
Placed	North East	7,940	7,430	7,930	7,750	8,240
	North West	25,820	24,670	24,930	25,750	26,520
	Yorkshire and The Humber	16,650	16,220	17,010	17,740	18,410
	East Midlands	14,390	14,000	14,650	14,880	15,290
	West Midlands	18,420	18,230	19,140	19,940	20,770
	East of England	20,450	19,730	20,620	21,160	21,740
	London	28,610	28,350	30,440	31,620	33,970
	South East	30,540	30,230	30,860	31,690	33,280
	South West	16,180	15,210	15,720	16,030	17,100
	(England total)	178,990	174,060	181,290	186,560	195,310
	Scotland	13,460	13,530	13,630	13,890	14,000
	Northern Ireland	8,100	7,630	8,230	8,010	7,940
	Wales	9,150	9,550	9,480	9,840	10,280
	UK	209,710	204,780	212,630	218,300	227,520

**RX.7 Placed 18 year old applicants by region of domicile: 6 days after A level results day**

Placed 18 year old applicants: change relative to 2014 cycle totals

Applicant Status	Domicile	2011	2012	2013	2014	2015
Placed	North East	2%	-4%	2%	0%	6%
	North West	0%	-4%	-3%	0%	3%
	Yorkshire and The Humber	-6%	-9%	-4%	0%	4%
	East Midlands	-3%	-6%	-2%	0%	3%
	West Midlands	-8%	-9%	-4%	0%	4%
	East of England	-3%	-7%	-3%	0%	3%
	London	-10%	-10%	-4%	0%	7%
	South East	-4%	-5%	-3%	0%	5%
	South West	1%	-5%	-2%	0%	7%
	(England total)	-4%	-7%	-3%	0%	5%
	Scotland	-3%	-3%	-2%	0%	1%
	Northern Ireland	1%	-5%	3%	0%	-1%
	Wales	-7%	-3%	-4%	0%	4%
	UK	-4%	-6%	-3%	0%	4%

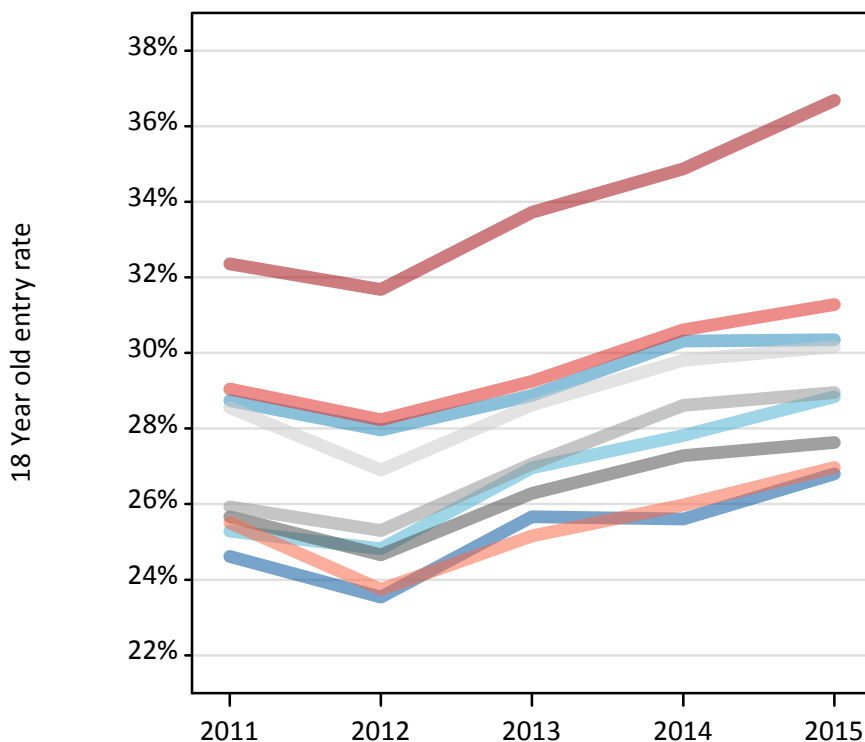
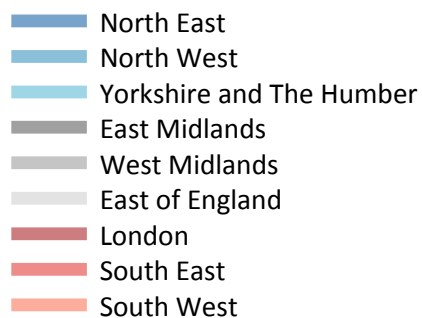
**RX.8 Placed 18 year old applicants by region of domicile: 6 days after A level results day**

Placed 18 year old applicants: absolute change relative to 2014 cycle totals

Applicant Status	Domicile	2011	2012	2013	2014	2015
Placed	North East	190	-320	180	0	490
	North West	80	-1,080	-820	0	780
	Yorkshire and The Humber	-1,090	-1,530	-730	0	670
	East Midlands	-490	-880	-240	0	410
	West Midlands	-1,520	-1,720	-800	0	830
	East of England	-710	-1,430	-540	0	580
	London	-3,010	-3,260	-1,180	0	2,350
	South East	-1,150	-1,460	-840	0	1,590
	South West	140	-820	-320	0	1,070
	(England total)	-7,570	-12,510	-5,270	0	8,750
	Scotland	-430	-360	-260	0	110
	Northern Ireland	90	-380	220	0	-80
	Wales	-680	-280	-360	0	440
	UK	-8,590	-13,520	-5,670	0	9,220

**RX.9 Placed 18 year old applicants by region of domicile: 6 days after A level results day**

Placed 18 year old applicants: entry rate



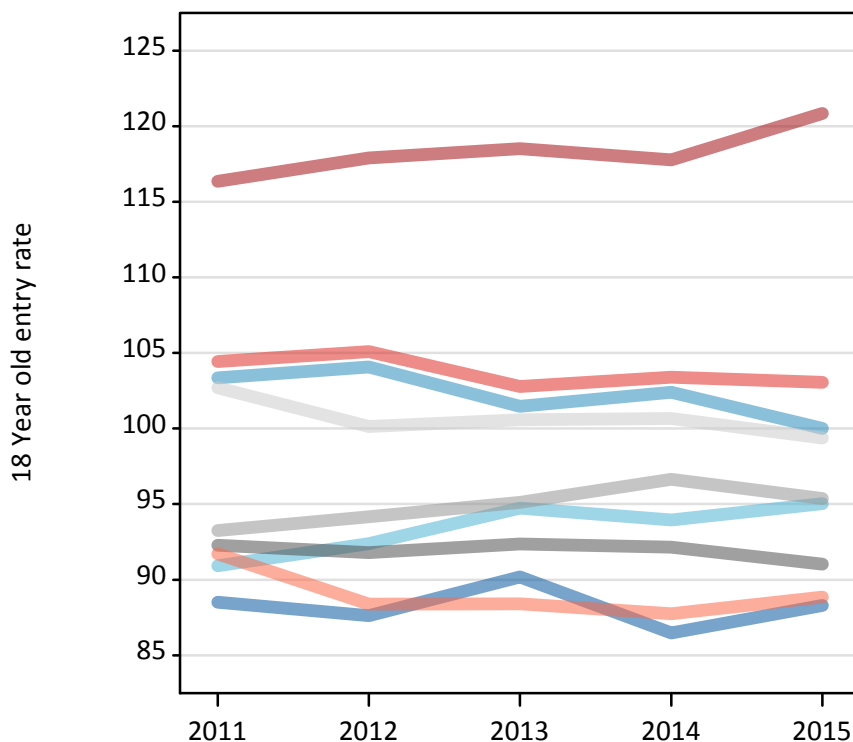
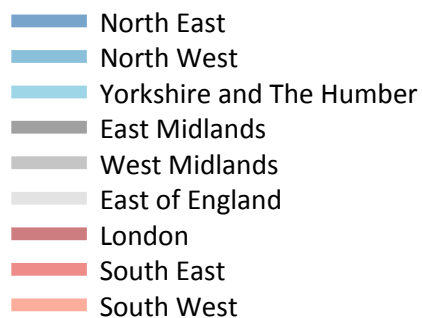
**RX.10 Placed 18 year old applicants by region of domicile: 6 days after A level results day**

Placed 18 year old applicants: entry rate

Applicant Status	Domicile	2011	2012	2013	2014	2015
Placed	North East	24.6%	23.5%	25.7%	25.6%	26.8%
	North West	28.7%	28.0%	28.9%	30.3%	30.4%
	Yorkshire and The Humber	25.3%	24.8%	27.0%	27.8%	28.8%
	East Midlands	25.7%	24.7%	26.3%	27.3%	27.6%
	West Midlands	25.9%	25.3%	27.1%	28.6%	28.9%
	East of England	28.6%	26.9%	28.6%	29.8%	30.2%
	London	32.4%	31.7%	33.7%	34.9%	36.7%
	South East	29.0%	28.2%	29.2%	30.6%	31.3%
	South West	25.5%	23.7%	25.2%	26.0%	27.0%
	(England total)	27.8%	26.9%	28.5%	29.6%	30.4%
	Scotland	21.4%	21.8%	22.1%	22.7%	23.3%
	Northern Ireland	32.4%	30.4%	33.6%	33.0%	31.9%
	Wales	23.7%	24.8%	25.1%	26.2%	27.3%
	UK	27.2%	26.5%	27.9%	29.0%	29.7%

**RX.11 Placed 18 year old applicants by region of domicile: 6 days after A level results day**

Placed 18 year old applicants: entry rates (indexed to 100 = England)



**RX.12 Placed 18 year old applicants by region of domicile: 6 days after A level results day**

Placed 18 year old applicants: entry rate (indexed to 100 = England)

Applicant Status	Domicile	2011	2012	2013	2014	2015
Placed	North East	89	88	90	86	88
	North West	103	104	101	102	100
	Yorkshire and The Humber	91	92	95	94	95
	East Midlands	92	92	92	92	91
	West Midlands	93	94	95	97	95
	East of England	103	100	101	101	99
	London	116	118	119	118	121
	South East	104	105	103	103	103
	South West	92	88	88	88	89
	(England total)	100	100	100	100	100