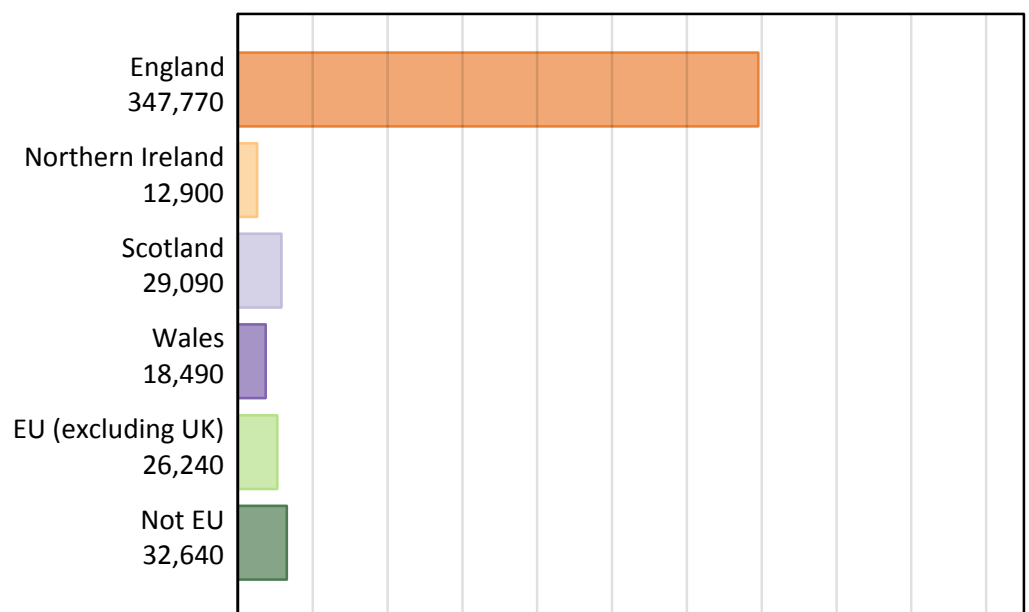


# Daily Clearing Analysis: Country

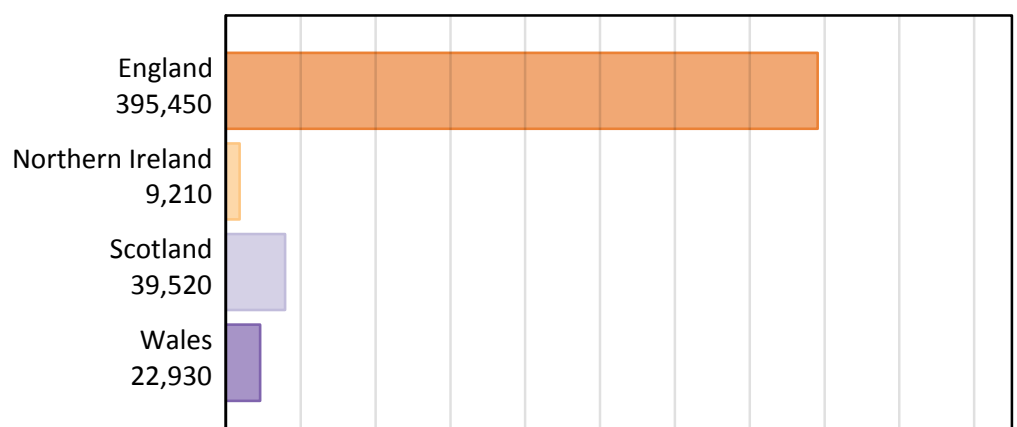
**Analysis at 00:05 on Wednesday 19 August 2015 (6 days after A level results day - No Scot.X1)**  
**BX.1 Placed applicants by country of provider and domicile, 2015 cycle**

Domicile of applicant	Country of provider				
	England	Northern Ireland	Scotland	Wales	UK
England	332,610	550	4,480	10,130	347,770
Northern Ireland	3,690	8,060	980	160	12,900
Scotland	1,570	20	27,460	50	29,090
Wales	7,990	10	110	10,370	18,490
EU (excluding UK)	20,740	410	3,930	1,160	26,240
Not EU	28,860	150	2,560	1,070	32,640
All	395,450	9,210	39,520	22,930	467,110

## BX.2 Placed applicants by domicile group

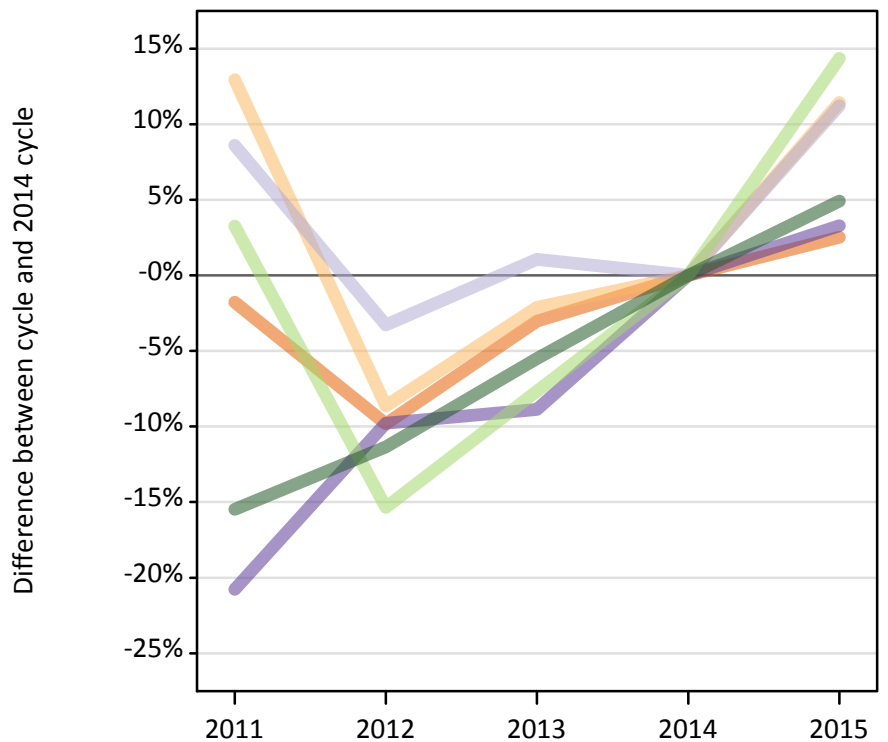


## BX.3 Placed applicants by country of provider



#### BX.4 Placed applicants at 6 days after A level results day: providers in England

Selected applicant domiciles: difference between cycle and 2014 cycle (at 6 days after A level results day)



#### BX.5 Placed applicants at 6 days after A level results day: providers in England

Placed applicants by domicile (at 6 days after A level results day)

Domicile of applicant	2011	2012	2013	2014	2015
England	318,660	292,540	314,640	324,420	332,610
Northern Ireland	3,740	3,030	3,240	3,310	3,690
Scotland	1,530	1,360	1,420	1,410	1,570
Wales	6,130	6,980	7,050	7,740	7,990
EU (excluding UK)	18,730	15,350	16,750	18,140	20,740
Not EU	23,240	24,380	25,990	27,500	28,860

#### BX.6 Placed applicants at 6 days after A level results day: providers in England

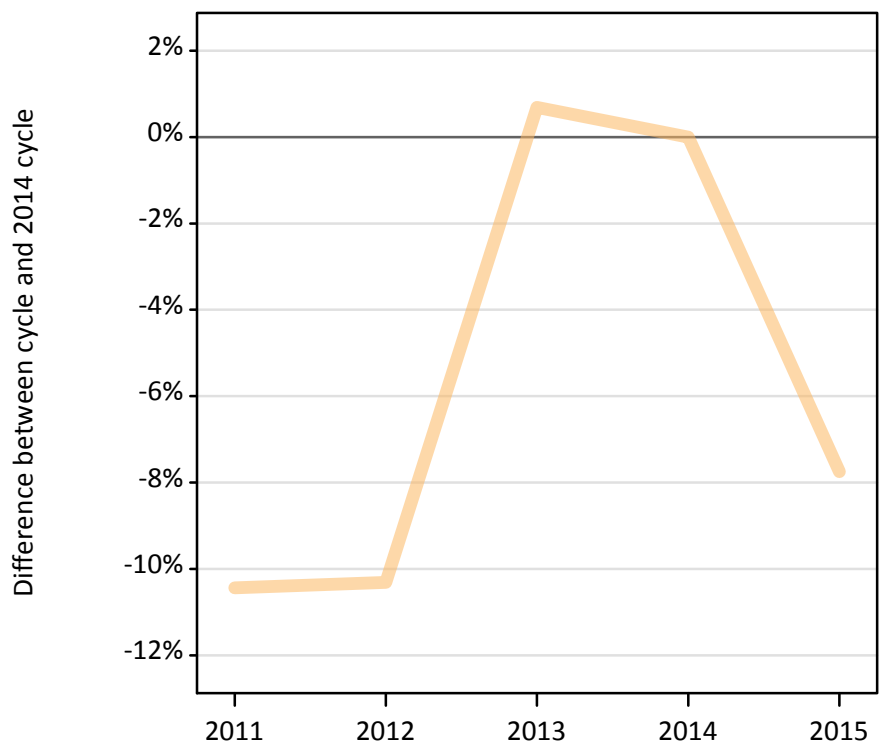
Selected applicant domiciles: difference between cycle and 2014 cycle (at 6 days after A level results day)

Domicile of applicant	2011	2012	2013	2014	2015
England	-2%	-10%	-3%	0%	3%
Northern Ireland	13%	-9%	-2%	0%	11%
Scotland	9%	-3%	1%	0%	11%
Wales	-21%	-10%	-9%	0%	3%
EU (excluding UK)	3%	-15%	-8%	0%	14%
Not EU	-15%	-11%	-6%	0%	5%

### BX.7 Placed applicants at 6 days after A level results day: providers in Northern Ireland

Selected applicant domiciles: difference between cycle and 2014 cycle (at 6 days after A level results day)

— Northern Ireland



### BX.8 Placed applicants at 6 days after A level results day: providers in Northern Ireland

Placed applicants by domicile (at 6 days after A level results day)

Domicile of applicant	2011	2012	2013	2014	2015
England	230	240	240	350	550
Northern Ireland	7,820	7,840	8,800	8,740	8,060
Scotland	20	30	10	20	20
Wales	10	0	0	10	10
EU (excluding UK)	450	420	450	490	410
Not EU	110	160	170	170	150

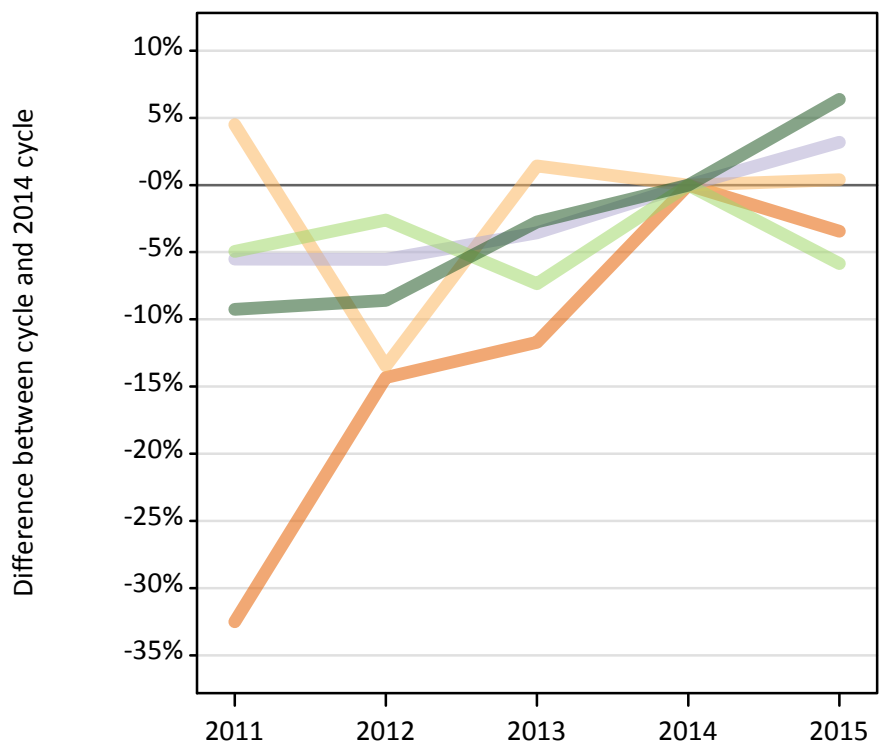
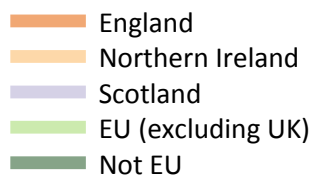
### BX.9 Placed applicants at 6 days after A level results day: providers in Northern Ireland

Selected applicant domiciles: difference between cycle and 2014 cycle (at 6 days after A level results day)

Domicile of applicant	2011	2012	2013	2014	2015
Northern Ireland	-10%	-10%	1%	0%	-8%

### BX.10 Placed applicants at 6 days after A level results day: providers in Scotland

Selected applicant domiciles: difference between cycle and 2014 cycle (at 6 days after A level results day)



### BX.11 Placed applicants at 6 days after A level results day: providers in Scotland

Placed applicants by domicile (at 6 days after A level results day)

Domicile of applicant	2011	2012	2013	2014	2015
England	3,130	3,980	4,100	4,640	4,480
Northern Ireland	1,020	850	990	980	980
Scotland	25,140	25,140	25,660	26,610	27,460
Wales	90	110	100	100	110
EU (excluding UK)	3,970	4,060	3,870	4,170	3,930
Not EU	2,180	2,200	2,340	2,400	2,560

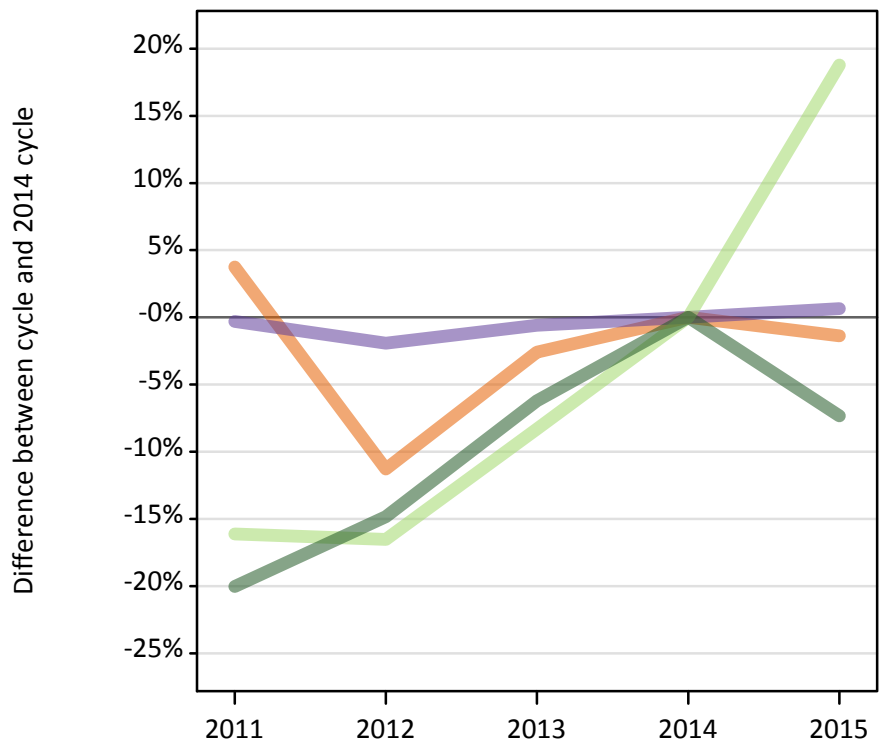
### BX.12 Placed applicants at 6 days after A level results day: providers in Scotland

Selected applicant domiciles: difference between cycle and 2014 cycle (at 6 days after A level results day)

Domicile of applicant	2011	2012	2013	2014	2015
England	-33%	-14%	-12%	0%	-3%
Northern Ireland	4%	-13%	1%	0%	0%
Scotland	-6%	-6%	-4%	0%	3%
EU (excluding UK)	-5%	-3%	-7%	0%	-6%
Not EU	-9%	-9%	-3%	0%	6%

### BX.13 Placed applicants at 6 days after A level results day: providers in Wales

Selected applicant domiciles: difference between cycle and 2014 cycle (at 6 days after A level results day)



### BX.14 Placed applicants at 6 days after A level results day: providers in Wales

Placed applicants by domicile (at 6 days after A level results day)

Domicile of applicant	2011	2012	2013	2014	2015
England	10,650	9,110	10,000	10,270	10,130
Northern Ireland	180	130	160	160	160
Scotland	60	50	60	60	50
Wales	10,270	10,100	10,240	10,300	10,370
EU (excluding UK)	820	810	890	970	1,160
Not EU	930	990	1,090	1,160	1,070

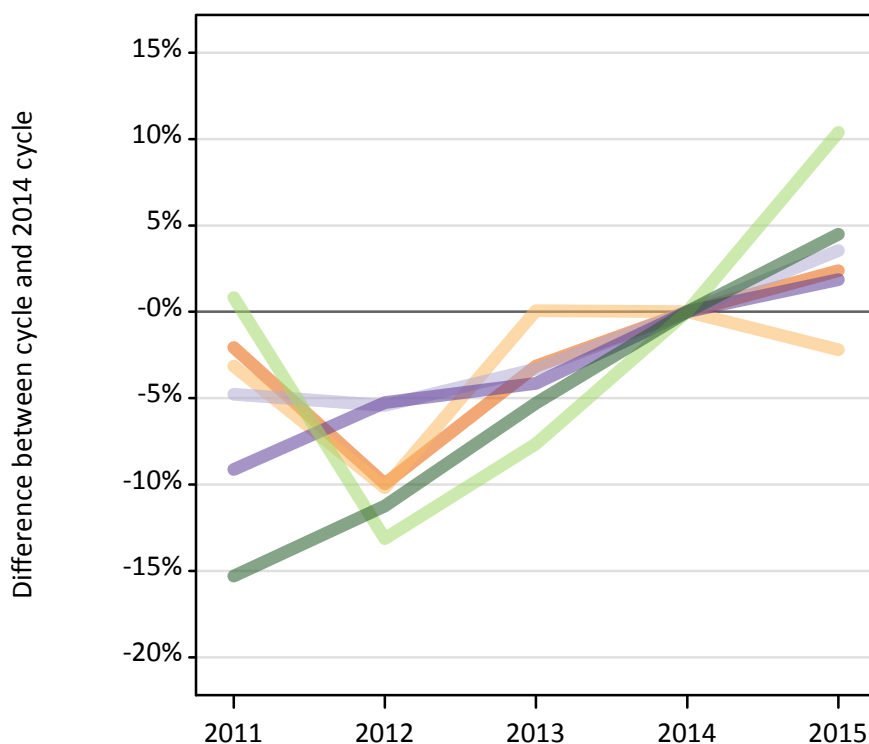
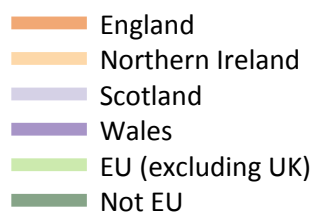
### BX.15 Placed applicants at 6 days after A level results day: providers in Wales

Selected applicant domiciles: difference between cycle and 2014 cycle (at 6 days after A level results day)

Domicile of applicant	2011	2012	2013	2014	2015
England	4%	-11%	-3%	0%	-1%
Wales	-0%	-2%	-1%	0%	1%
EU (excluding UK)	-16%	-17%	-8%	0%	19%
Not EU	-20%	-15%	-6%	0%	-7%

### BX.16 Placed applicants at 6 days after A level results day: providers in the UK

Selected applicant domiciles: difference between cycle and 2014 cycle (at 6 days after A level results day)



### BX.17 Placed applicants at 6 days after A level results day: providers in the UK

Placed applicants by domicile (at 6 days after A level results day)

Domicile of applicant	2011	2012	2013	2014	2015
England	332,670	305,860	328,980	339,680	347,770
Northern Ireland	12,770	11,840	13,190	13,190	12,900
Scotland	26,750	26,570	27,160	28,090	29,090
Wales	16,490	17,190	17,400	18,150	18,490
EU (excluding UK)	23,960	20,650	21,950	23,770	26,240
Not EU	26,460	27,720	29,580	31,240	32,640

### BX.18 Placed applicants at 6 days after A level results day: providers in the UK

Selected applicant domiciles: difference between cycle and 2014 cycle (at 6 days after A level results day)

Domicile of applicant	2011	2012	2013	2014	2015
England	-2%	-10%	-3%	0%	2%
Northern Ireland	-3%	-10%	0%	0%	-2%
Scotland	-5%	-5%	-3%	0%	4%
Wales	-9%	-5%	-4%	0%	2%
EU (excluding UK)	1%	-13%	-8%	0%	10%
Not EU	-15%	-11%	-5%	0%	4%