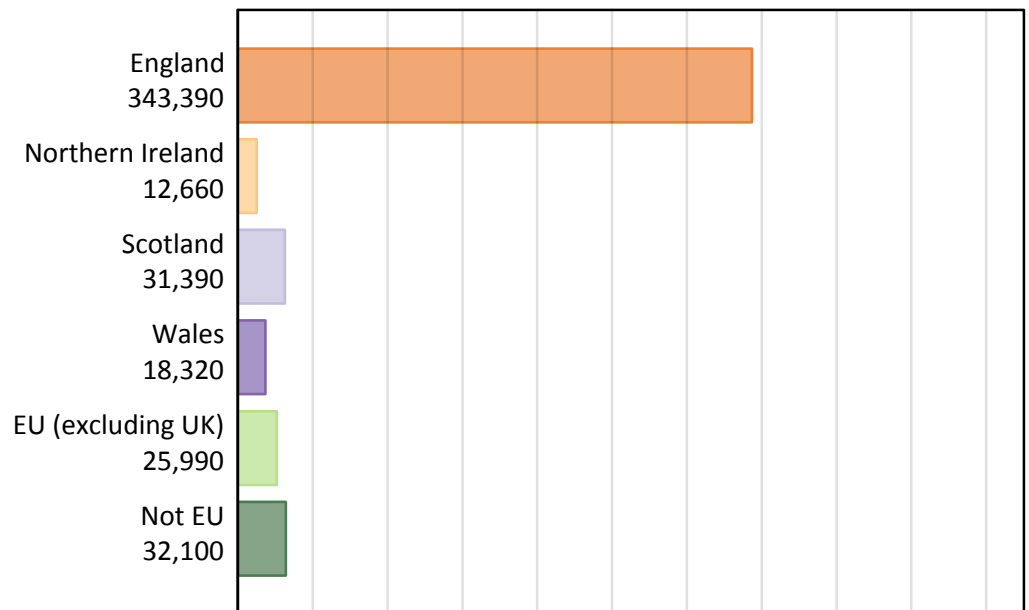


Analysis at 00:05 on Tuesday 18 August 2015 (5 days after A level results day)

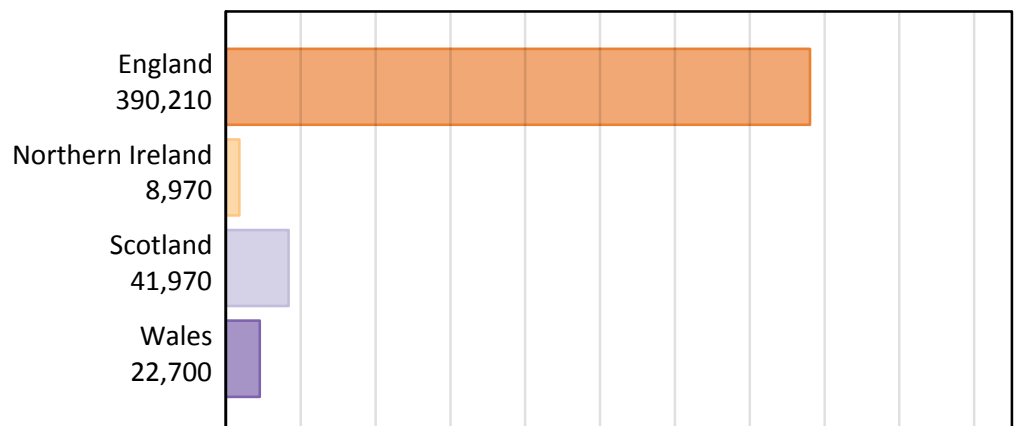
B.1 Placed applicants by country of provider and domicile, 2015 cycle

Domicile of applicant	Country of provider				
	England	Northern Ireland	Scotland	Wales	UK
England	328,330	550	4,480	10,030	343,390
Northern Ireland	3,620	7,850	1,030	160	12,660
Scotland	1,540	20	29,790	50	31,390
Wales	7,920	10	110	10,280	18,320
EU (excluding UK)	20,430	390	4,040	1,130	25,990
Not EU	28,370	150	2,520	1,060	32,100
All	390,210	8,970	41,970	22,700	463,850

B.2 Placed applicants by domicile group

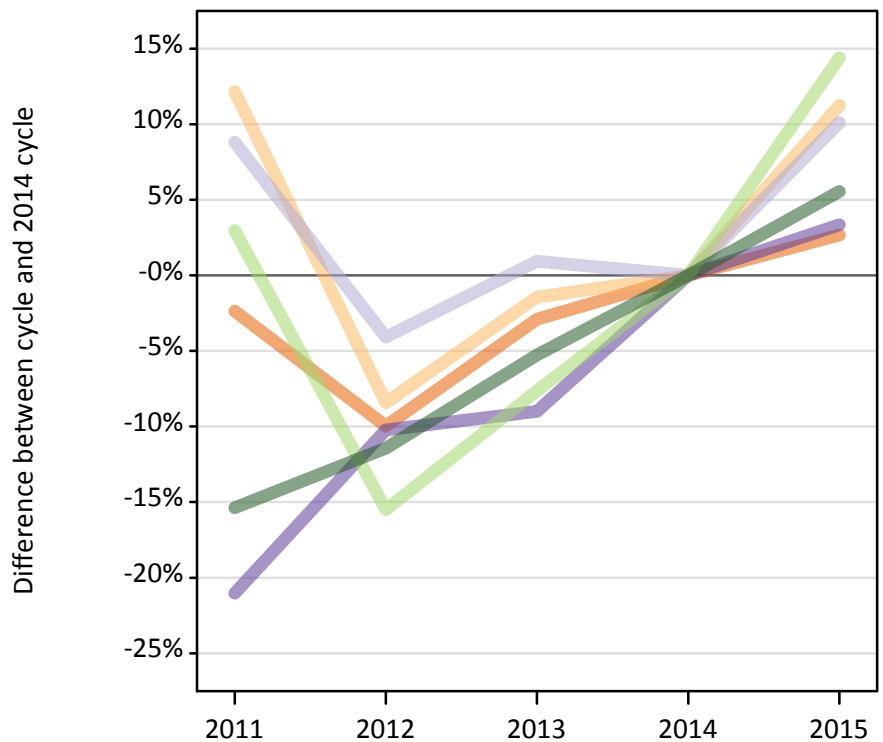


B.3 Placed applicants by country of provider



B.4 Placed applicants at 5 days after A level results day: providers in England

Selected applicant domiciles: difference between cycle and 2014 cycle (at 5 days after A level results day)



B.5 Placed applicants at 5 days after A level results day: providers in England

Placed applicants by domicile (at 5 days after A level results day)

Domicile of applicant	2011	2012	2013	2014	2015
England	312,220	287,850	310,520	319,760	328,330
Northern Ireland	3,650	2,980	3,210	3,260	3,620
Scotland	1,520	1,340	1,410	1,400	1,540
Wales	6,050	6,880	6,970	7,660	7,920
EU (excluding UK)	18,390	15,090	16,490	17,860	20,430
Not EU	22,750	23,810	25,460	26,880	28,370

B.6 Placed applicants at 5 days after A level results day: providers in England

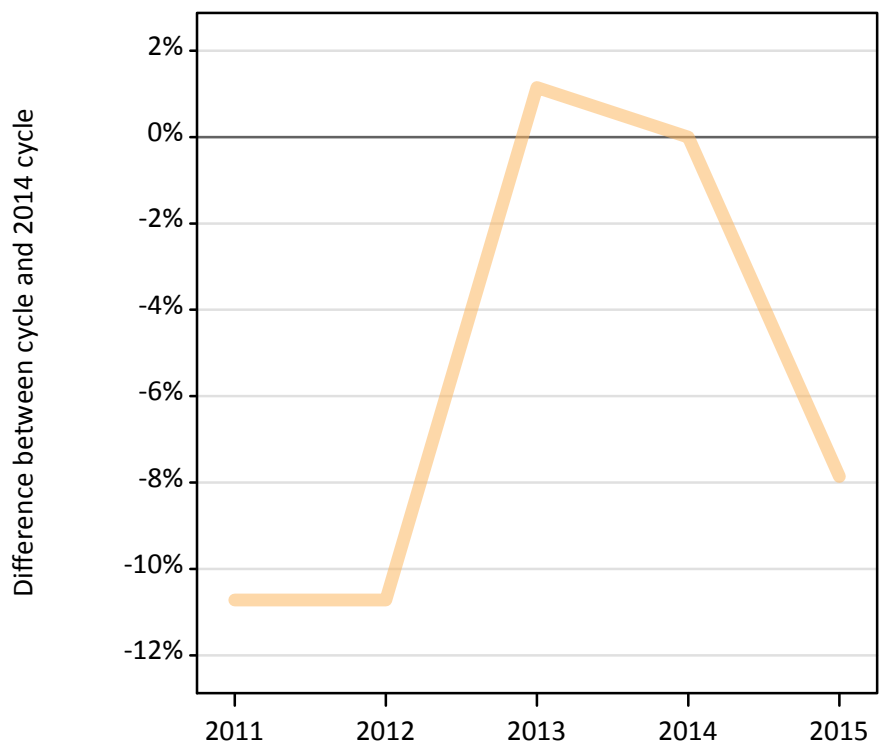
Selected applicant domiciles: difference between cycle and 2014 cycle (at 5 days after A level results day)

Domicile of applicant	2011	2012	2013	2014	2015
England	-2%	-10%	-3%	0%	3%
Northern Ireland	12%	-8%	-1%	0%	11%
Scotland	9%	-4%	1%	0%	10%
Wales	-21%	-10%	-9%	0%	3%
EU (excluding UK)	3%	-15%	-8%	0%	14%
Not EU	-15%	-11%	-5%	0%	6%

B.7 Placed applicants at 5 days after A level results day: providers in Northern Ireland

Selected applicant domiciles: difference between cycle and 2014 cycle (at 5 days after A level results day)

— Northern Ireland



B.8 Placed applicants at 5 days after A level results day: providers in Northern Ireland

Placed applicants by domicile (at 5 days after A level results day)

Domicile of applicant	2011	2012	2013	2014	2015
England	220	230	240	340	550
Northern Ireland	7,610	7,610	8,620	8,520	7,850
Scotland	20	30	10	20	20
Wales	10	0	0	10	10
EU (excluding UK)	440	410	450	490	390
Not EU	110	160	170	170	150

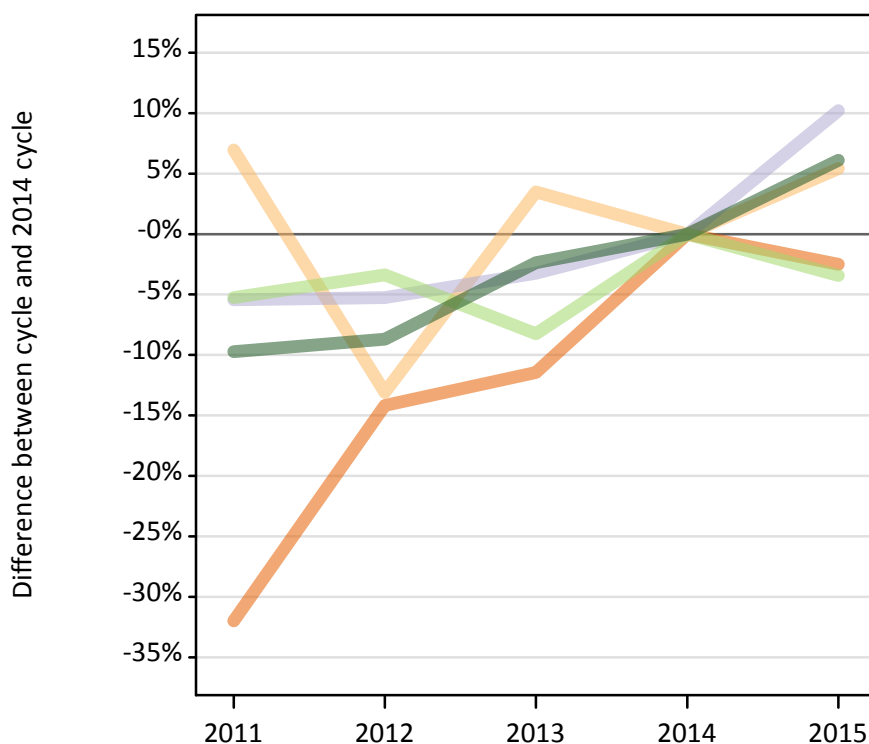
B.9 Placed applicants at 5 days after A level results day: providers in Northern Ireland

Selected applicant domiciles: difference between cycle and 2014 cycle (at 5 days after A level results day)

Domicile of applicant	2011	2012	2013	2014	2015
Northern Ireland	-11%	-11%	1%	0%	-8%

B.10 Placed applicants at 5 days after A level results day: providers in Scotland

Selected applicant domiciles: difference between cycle and 2014 cycle (at 5 days after A level results day)



B.11 Placed applicants at 5 days after A level results day: providers in Scotland

Placed applicants by domicile (at 5 days after A level results day)

Domicile of applicant	2011	2012	2013	2014	2015
England	3,130	3,950	4,070	4,600	4,480
Northern Ireland	1,050	850	1,010	980	1,030
Scotland	25,560	25,610	26,160	27,030	29,790
Wales	90	110	100	100	110
EU (excluding UK)	3,960	4,040	3,840	4,180	4,040
Not EU	2,150	2,170	2,320	2,380	2,520

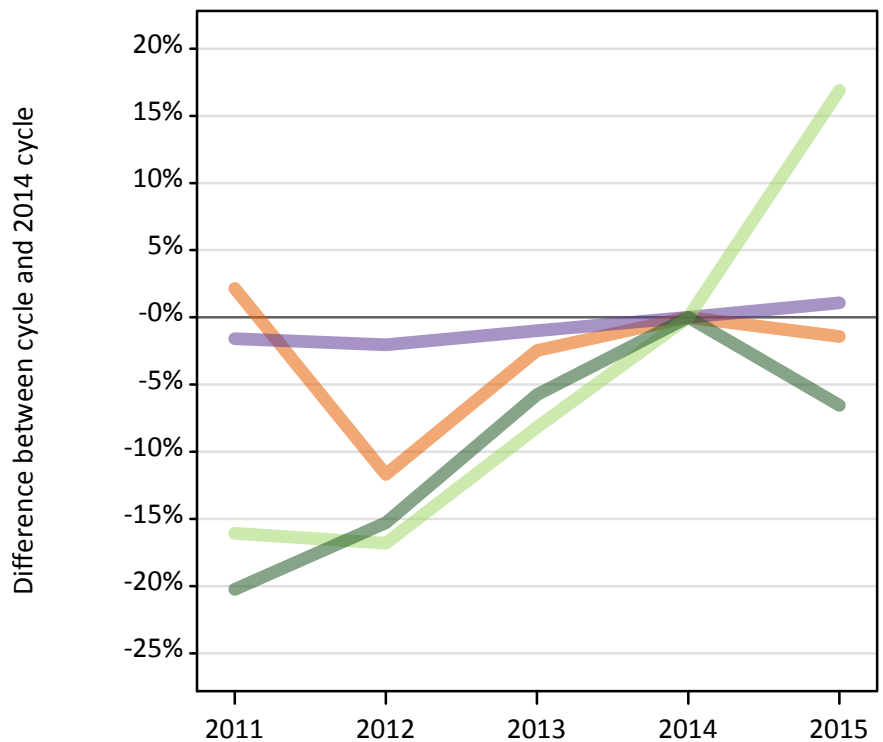
B.12 Placed applicants at 5 days after A level results day: providers in Scotland

Selected applicant domiciles: difference between cycle and 2014 cycle (at 5 days after A level results day)

Domicile of applicant	2011	2012	2013	2014	2015
England	-32%	-14%	-11%	0%	-3%
Northern Ireland	7%	-13%	3%	0%	5%
Scotland	-5%	-5%	-3%	0%	10%
EU (excluding UK)	-5%	-3%	-8%	0%	-3%
Not EU	-10%	-9%	-2%	0%	6%

B.13 Placed applicants at 5 days after A level results day: providers in Wales

Selected applicant domiciles: difference between cycle and 2014 cycle (at 5 days after A level results day)



B.14 Placed applicants at 5 days after A level results day: providers in Wales

Placed applicants by domicile (at 5 days after A level results day)

Domicile of applicant	2011	2012	2013	2014	2015
England	10,390	8,980	9,920	10,170	10,030
Northern Ireland	180	130	160	160	160
Scotland	60	50	60	60	50
Wales	10,010	9,970	10,070	10,170	10,280
EU (excluding UK)	810	800	890	960	1,130
Not EU	900	960	1,070	1,130	1,060

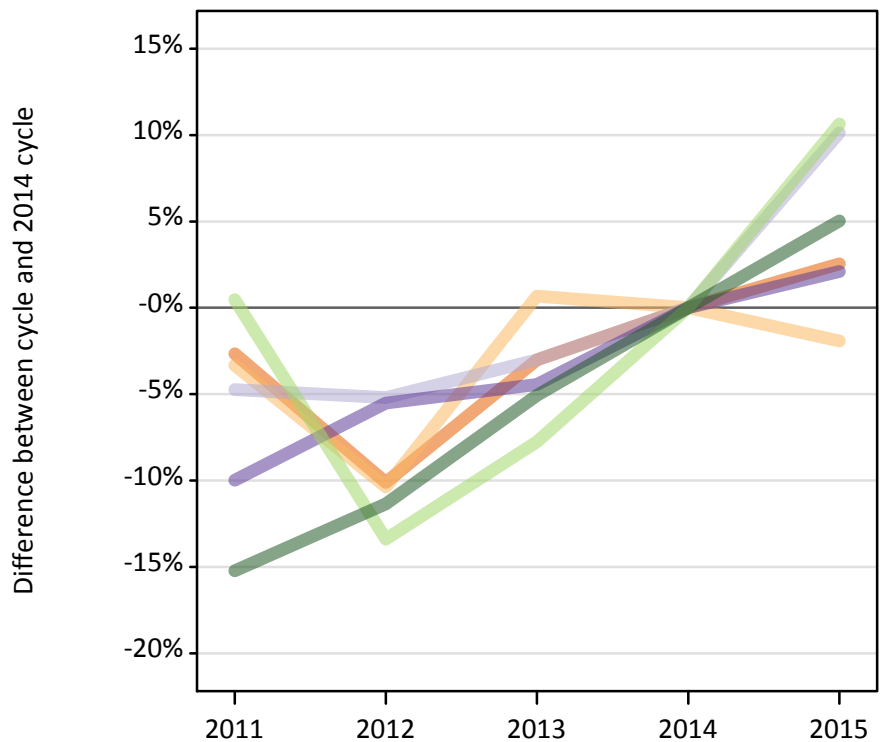
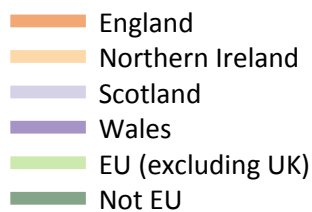
B.15 Placed applicants at 5 days after A level results day: providers in Wales

Selected applicant domiciles: difference between cycle and 2014 cycle (at 5 days after A level results day)

Domicile of applicant	2011	2012	2013	2014	2015
England	2%	-12%	-2%	0%	-1%
Wales	-2%	-2%	-1%	0%	1%
EU (excluding UK)	-16%	-17%	-8%	0%	17%
Not EU	-20%	-15%	-6%	0%	-7%

B.16 Placed applicants at 5 days after A level results day: providers in the UK

Selected applicant domiciles: difference between cycle and 2014 cycle (at 5 days after A level results day)



B.17 Placed applicants at 5 days after A level results day: providers in the UK

Placed applicants by domicile (at 5 days after A level results day)

Domicile of applicant	2011	2012	2013	2014	2015
England	325,950	301,010	324,750	334,870	343,390
Northern Ireland	12,480	11,570	13,000	12,910	12,660
Scotland	27,150	27,020	27,640	28,500	31,390
Wales	16,160	16,960	17,150	17,950	18,320
EU (excluding UK)	23,600	20,350	21,670	23,490	25,990
Not EU	25,910	27,100	29,020	30,560	32,100

B.18 Placed applicants at 5 days after A level results day: providers in the UK

Selected applicant domiciles: difference between cycle and 2014 cycle (at 5 days after A level results day)

Domicile of applicant	2011	2012	2013	2014	2015
England	-3%	-10%	-3%	0%	3%
Northern Ireland	-3%	-10%	1%	0%	-2%
Scotland	-5%	-5%	-3%	0%	10%
Wales	-10%	-6%	-4%	0%	2%
EU (excluding UK)	0%	-13%	-8%	0%	11%
Not EU	-15%	-11%	-5%	0%	5%