

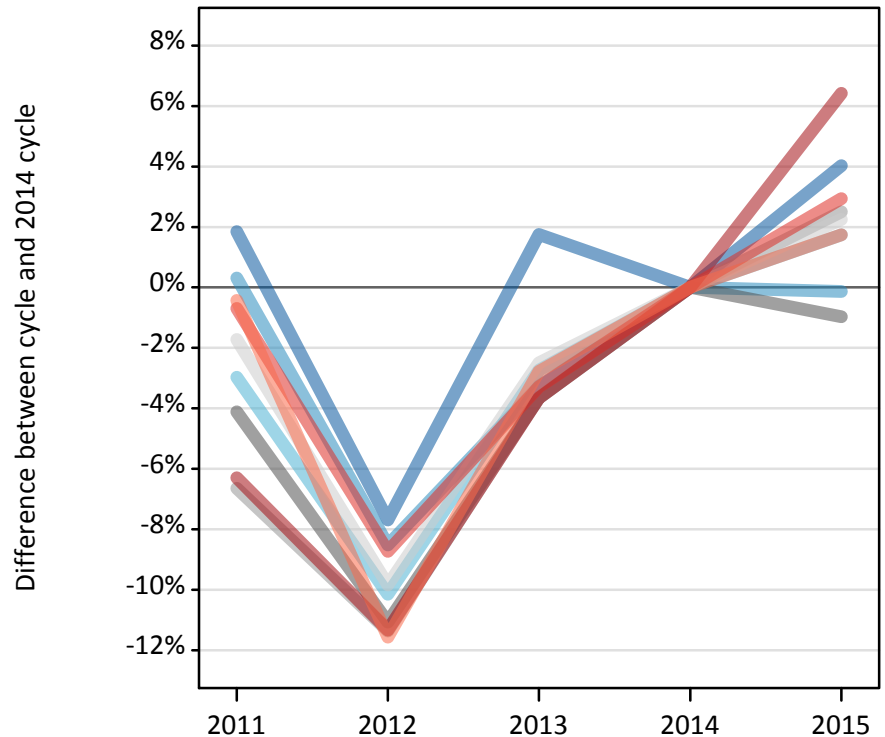
Daily Clearing Analysis: Region

Analysis at 00:05 on Tuesday 18 August 2015 (5 days after A level results day - No Scot.X1)

RX.1 Placed applicants by region of domicile: 5 days after A level results day

Placed applicants: change relative to 2014 cycle totals

- North East
- North West
- Yorkshire and The Humber
- East Midlands
- West Midlands
- East of England
- London
- South East
- South West



RX.2 Placed applicants by region of domicile: 5 days after A level results day

Applicant Status	Domicile	2011	2012	2013	2014	2015
Placed	North East	14,750	13,370	14,740	14,490	15,070
	North West	45,710	41,680	44,080	45,570	45,510
	Yorkshire and The Humber	30,310	28,070	30,390	31,240	31,790
	East Midlands	25,500	23,650	25,620	26,590	26,330
	West Midlands	33,620	31,920	34,700	36,010	36,920
	East of England	34,400	31,560	34,130	35,010	35,790
	London	56,360	53,330	57,940	60,140	64,010
	South East	54,160	49,770	52,740	54,540	56,140
	South West	31,130	27,650	30,400	31,270	31,810
	(England total)	325,950	301,000	324,740	334,850	343,360
	Scotland	26,500	26,340	27,000	27,930	28,890
	Northern Ireland	12,440	11,560	12,980	12,900	12,610
	Wales	16,160	16,960	17,150	17,950	18,320
	UK	381,040	355,860	381,870	393,640	403,180

RX.3 Placed applicants by region of domicile: 5 days after A level results day

Placed applicants: change relative to 2014 cycle totals

Applicant Status	Domicile	2011	2012	2013	2014	2015
Placed	North East	2%	-8%	2%	0%	4%
	North West	0%	-9%	-3%	0%	-0%
	Yorkshire and The Humber	-3%	-10%	-3%	0%	2%
	East Midlands	-4%	-11%	-4%	0%	-1%
	West Midlands	-7%	-11%	-4%	0%	3%
	East of England	-2%	-10%	-2%	0%	2%
	London	-6%	-11%	-4%	0%	6%
	South East	-1%	-9%	-3%	0%	3%
	South West	-0%	-12%	-3%	0%	2%
	(England total)	-3%	-10%	-3%	0%	3%
	Scotland	-5%	-6%	-3%	0%	3%
	Northern Ireland	-4%	-10%	1%	0%	-2%
	Wales	-10%	-6%	-4%	0%	2%
	UK	-3%	-10%	-3%	0%	2%

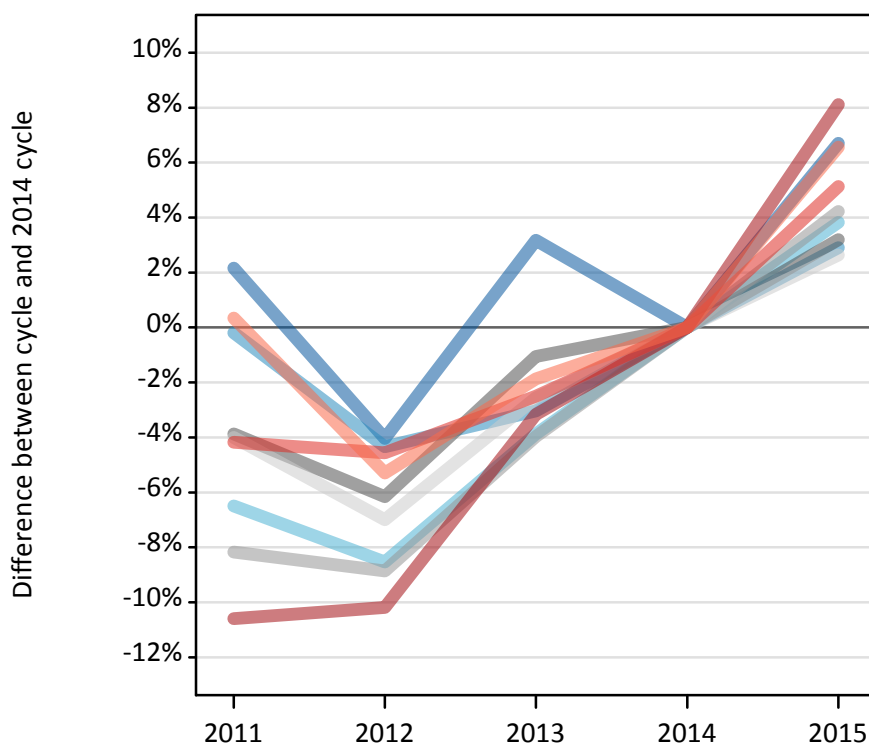
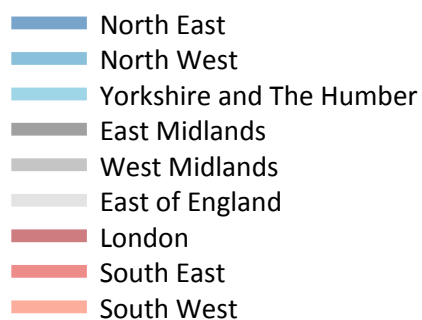
RX.4 Placed applicants by region of domicile: 5 days after A level results day

Placed applicants: absolute change relative to 2014 cycle totals

Applicant Status	Domicile	2011	2012	2013	2014	2015
Placed	North East	270	-1,120	250	0	580
	North West	140	-3,880	-1,490	0	-60
	Yorkshire and The Humber	-930	-3,170	-860	0	540
	East Midlands	-1,090	-2,940	-970	0	-260
	West Midlands	-2,390	-4,090	-1,310	0	900
	East of England	-600	-3,450	-870	0	790
	London	-3,790	-6,820	-2,200	0	3,860
	South East	-380	-4,760	-1,790	0	1,600
	South West	-130	-3,620	-870	0	550
	(England total)	-8,910	-33,850	-10,110	0	8,500
	Scotland	-1,440	-1,590	-930	0	960
	Northern Ireland	-460	-1,350	70	0	-300
	Wales	-1,790	-990	-800	0	380
	UK	-12,600	-37,780	-11,770	0	9,540

RX.5 Placed 18 year old applicants by region of domicile: 5 days after A level results day

Placed 18 year old applicants: change relative to 2014 cycle totals



RX.6 Placed 18 year old applicants by region of domicile: 5 days after A level results day

Applicant Status	Domicile	2011	2012	2013	2014	2015
Placed	North East	7,810	7,340	7,890	7,640	8,160
	North West	25,420	24,360	24,700	25,470	26,210
	Yorkshire and The Humber	16,430	16,070	16,890	17,570	18,250
	East Midlands	14,160	13,820	14,570	14,730	15,200
	West Midlands	18,120	17,990	18,950	19,730	20,570
	East of England	20,130	19,500	20,430	20,970	21,520
	London	27,710	27,840	30,020	31,000	33,510
	South East	30,110	29,990	30,640	31,430	33,040
	South West	15,980	15,080	15,630	15,930	16,970
	(England total)	175,880	171,990	179,720	184,460	193,420
	Scotland	13,400	13,480	13,600	13,870	13,960
	Northern Ireland	7,880	7,440	8,130	7,830	7,750
	Wales	9,010	9,440	9,420	9,760	10,200
	UK	206,170	202,360	210,860	215,920	225,330

RX.7 Placed 18 year old applicants by region of domicile: 5 days after A level results day

Placed 18 year old applicants: change relative to 2014 cycle totals

Applicant Status	Domicile	2011	2012	2013	2014	2015
Placed	North East	2%	-4%	3%	0%	7%
	North West	-0%	-4%	-3%	0%	3%
	Yorkshire and The Humber	-6%	-9%	-4%	0%	4%
	East Midlands	-4%	-6%	-1%	0%	3%
	West Midlands	-8%	-9%	-4%	0%	4%
	East of England	-4%	-7%	-3%	0%	3%
	London	-11%	-10%	-3%	0%	8%
	South East	-4%	-5%	-3%	0%	5%
	South West	0%	-5%	-2%	0%	7%
	(England total)	-5%	-7%	-3%	0%	5%
	Scotland	-3%	-3%	-2%	0%	1%
	Northern Ireland	1%	-5%	4%	0%	-1%
	Wales	-8%	-3%	-3%	0%	4%
	UK	-5%	-6%	-2%	0%	4%

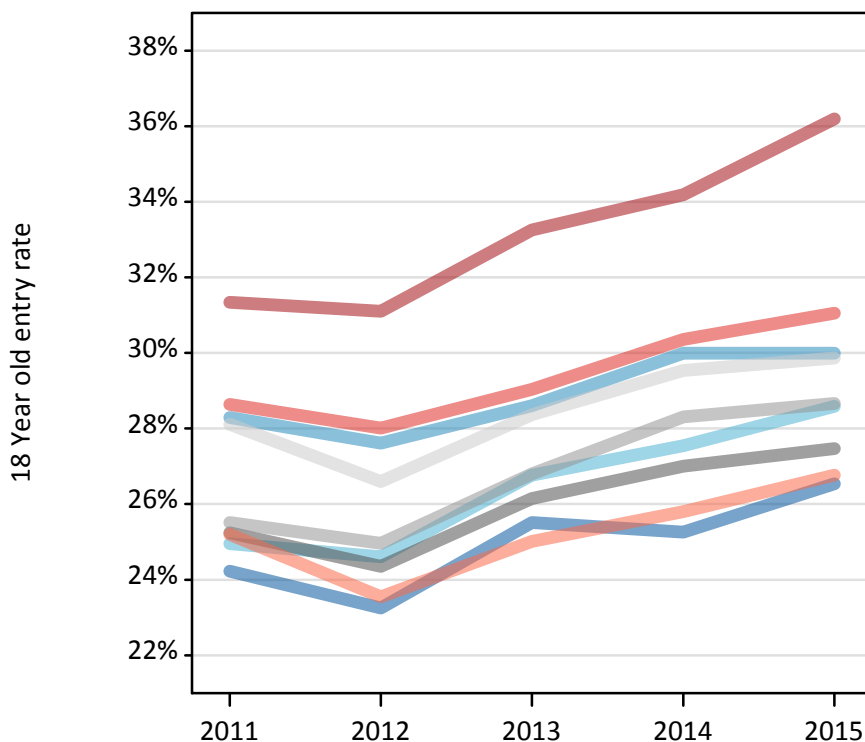
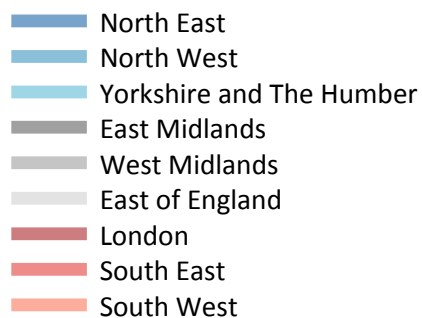
RX.8 Placed 18 year old applicants by region of domicile: 5 days after A level results day

Placed 18 year old applicants: absolute change relative to 2014 cycle totals

Applicant Status	Domicile	2011	2012	2013	2014	2015
Placed	North East	170	-310	240	0	510
	North West	-50	-1,110	-770	0	740
	Yorkshire and The Humber	-1,140	-1,500	-680	0	670
	East Midlands	-570	-910	-160	0	470
	West Midlands	-1,610	-1,750	-780	0	830
	East of England	-840	-1,470	-540	0	550
	London	-3,290	-3,160	-980	0	2,520
	South East	-1,310	-1,440	-790	0	1,610
	South West	60	-840	-300	0	1,050
	(England total)	-8,590	-12,470	-4,750	0	8,960
	Scotland	-470	-380	-270	0	90
	Northern Ireland	50	-390	290	0	-80
	Wales	-740	-320	-340	0	440
	UK	-9,750	-13,570	-5,070	0	9,410

RX.9 Placed 18 year old applicants by region of domicile: 5 days after A level results day

Placed 18 year old applicants: entry rate



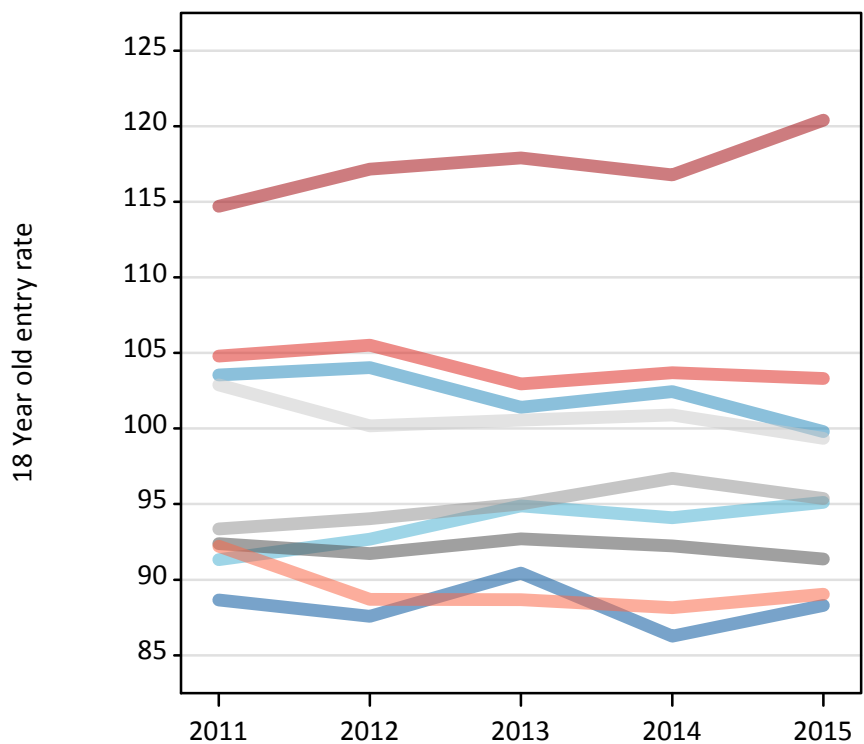
RX.10 Placed 18 year old applicants by region of domicile: 5 days after A level results day

Placed 18 year old applicants: entry rate

Applicant Status	Domicile	2011	2012	2013	2014	2015
Placed	North East	24.2%	23.3%	25.5%	25.3%	26.5%
	North West	28.3%	27.6%	28.6%	30.0%	30.0%
	Yorkshire and The Humber	25.0%	24.6%	26.8%	27.5%	28.6%
	East Midlands	25.2%	24.4%	26.2%	27.0%	27.5%
	West Midlands	25.5%	25.0%	26.8%	28.3%	28.7%
	East of England	28.1%	26.6%	28.4%	29.5%	29.9%
	London	31.3%	31.1%	33.3%	34.2%	36.2%
	South East	28.6%	28.0%	29.0%	30.4%	31.1%
	South West	25.2%	23.5%	25.0%	25.8%	26.8%
	(England total)	27.3%	26.5%	28.2%	29.3%	30.1%
	Scotland	21.3%	21.8%	22.1%	22.6%	23.2%
	Northern Ireland	31.5%	29.6%	33.1%	32.3%	31.2%
	Wales	23.4%	24.5%	24.9%	26.0%	27.1%
	UK	26.8%	26.2%	27.7%	28.7%	29.4%

RX.11 Placed 18 year old applicants by region of domicile: 5 days after A level results day

Placed 18 year old applicants: entry rates (indexed to 100 = England)



RX.12 Placed 18 year old applicants by region of domicile: 5 days after A level results day

Placed 18 year old applicants: entry rate (indexed to 100 = England)

Applicant Status	Domicile	2011	2012	2013	2014	2015
Placed	North East	89	88	90	86	88
	North West	104	104	101	102	100
	Yorkshire and The Humber	91	93	95	94	95
	East Midlands	92	92	93	92	91
	West Midlands	93	94	95	97	95
	East of England	103	100	101	101	99
	London	115	117	118	117	120
	South East	105	106	103	104	103
	South West	92	89	89	88	89
	(England total)	100	100	100	100	100