

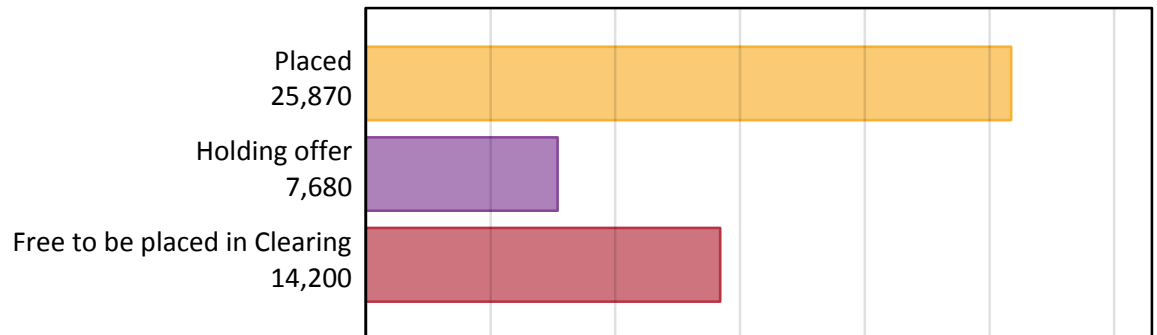
Daily Clearing Analysis: Overview

Analysis at 00:05 on Tuesday 18 August 2015 (5 days after A level results day - No Scot.X1)

AX.1 Applicants by type and status from the EU - excluding UK, 2015 cycle

Applicant type	Status	2015
Main scheme	Placed (Clearing)	810
	Placed (Adjustment)	40
	Placed (Firm)	21,980
	Placed (Insurance)	1,880
	Placed (Other)	950
	Holding offer	7,680
	Free to be placed in Clearing	14,200
Direct to Clearing	Placed (Direct to Clearing)	220
	Other (Direct to Clearing)	380
All applicants	Placed	25,870

AX.2 Summary of applicants who are placed, holding offers or free to be placed in Clearing (the EU - excluding UK)



AX.3 All placed applicants from the EU - excluding UK: 5 days after A level results day

All placed applicants: difference between cycle and 2014 cycle

Placed



AX.4 All placed applicants from the EU - excluding UK: 5 days after A level results day

All placed applicants: applicants at 5 days after A level results day

Applicant type	Status	2011	2012	2013	2014	2015
All applicants	Placed	23,580	20,330	21,660	23,470	25,870

AX.5 All placed applicants from the EU - excluding UK: 5 days after A level results day

All placed applicants: difference between cycle and 2014 cycle

Applicant type	Status	2011	2012	2013	2014	2015
All applicants	Placed	0%	-13%	-8%	0%	10%

AX.6 Placed main scheme applicants from the EU - excluding UK: 5 days after A level results day

Selected placed routes: difference between cycle and 2014 cycle

- Placed (Clearing)
- Placed (Firm)
- Placed (Insurance)



AX.7 Placed main scheme applicants from the EU - excluding UK: 5 days after A level results day

All Main scheme placed routes (excluding Adjustment): applicants at 5 days after A level results day

Applicant type	Status	2011	2012	2013	2014	2015
Main scheme	Placed (Clearing)	530	640	610	750	810
	Placed (Firm)	20,140	17,330	18,390	19,950	21,980
	Placed (Insurance)	1,640	1,330	1,480	1,630	1,880
	Placed (Other)	1,140	850	950	940	950

AX.8 Placed main scheme applicants from the EU - excluding UK: 5 days after A level results day

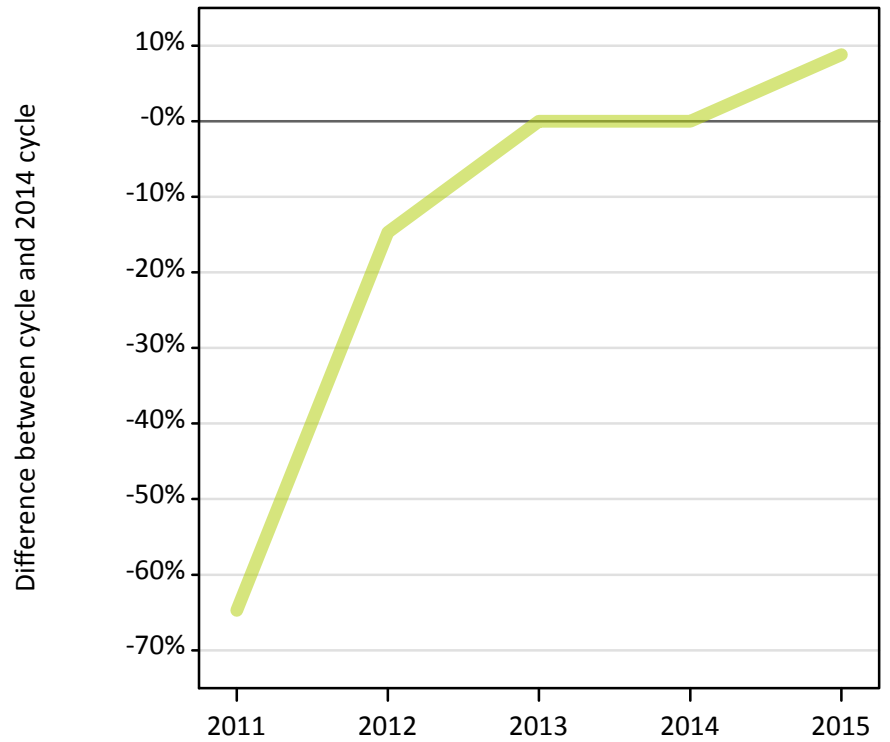
Selected placed routes: difference between cycle and 2014 cycle

Applicant type	Status	2011	2012	2013	2014	2015
Main scheme	Placed (Clearing)	-29%	-15%	-18%	0%	8%
	Placed (Firm)	1%	-13%	-8%	0%	10%
	Placed (Insurance)	0%	-19%	-9%	0%	15%

AX.9 Main scheme applicants placed through adjustment: 5 days after A level results day

Placed through adjustment: difference between cycle and 2014 cycle

Placed (Adjustment)



AX.10 Main scheme applicants placed through adjustment: 5 days after A level results day

Placed through adjustment: applicants at 5 days after A level results day

Applicant type	Status	2011	2012	2013	2014	2015
Main scheme	Placed (Adjustment)	10	30	30	30	40

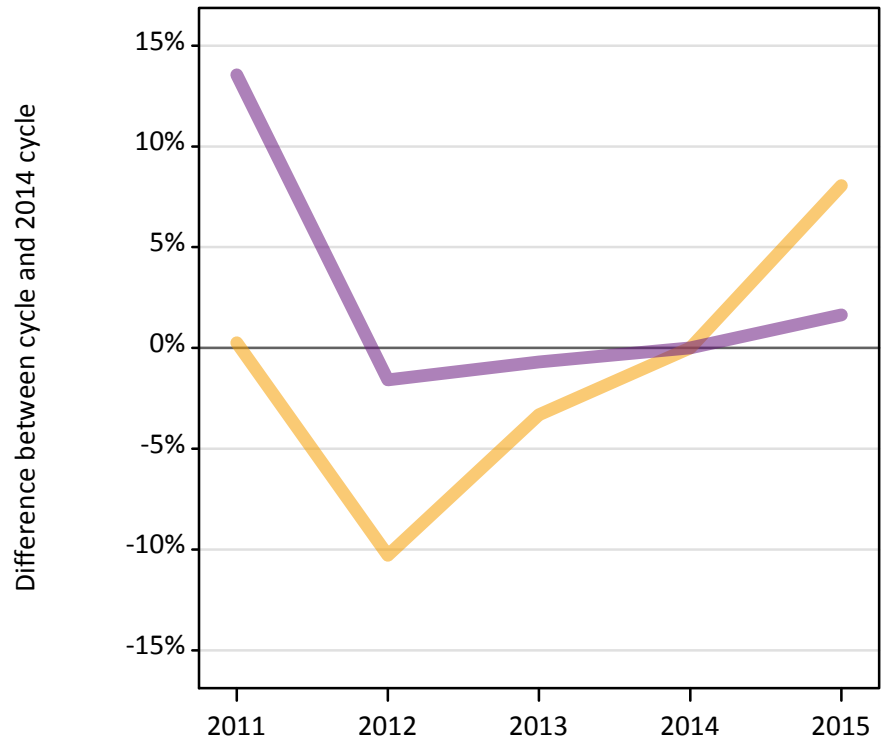
AX.11 Main scheme applicants placed through adjustment: 5 days after A level results day

Placed through adjustment: difference between cycle and 2014 cycle

Applicant type	Status	2011	2012	2013	2014	2015
Main scheme	Placed (Adjustment)	-65%	-15%	0%	0%	9%

AX.12 Main scheme applicants not currently placed from the EU - excluding UK: 5 days after A level results day
 Applicants in unplaced states: difference between cycle and 2014 cycle

— Holding offer
— Free to be placed in Clearing



AX.13 Main scheme applicants not currently placed from the EU - excluding UK: 5 days after A level results day
 Applicants in unplaced states: applicants at 5 days after A level results day

Applicant type	Status	2011	2012	2013	2014	2015
Main scheme	Holding offer	7,130	6,380	6,870	7,110	7,680
	Free to be placed in Clearing	15,870	13,750	13,880	13,970	14,200

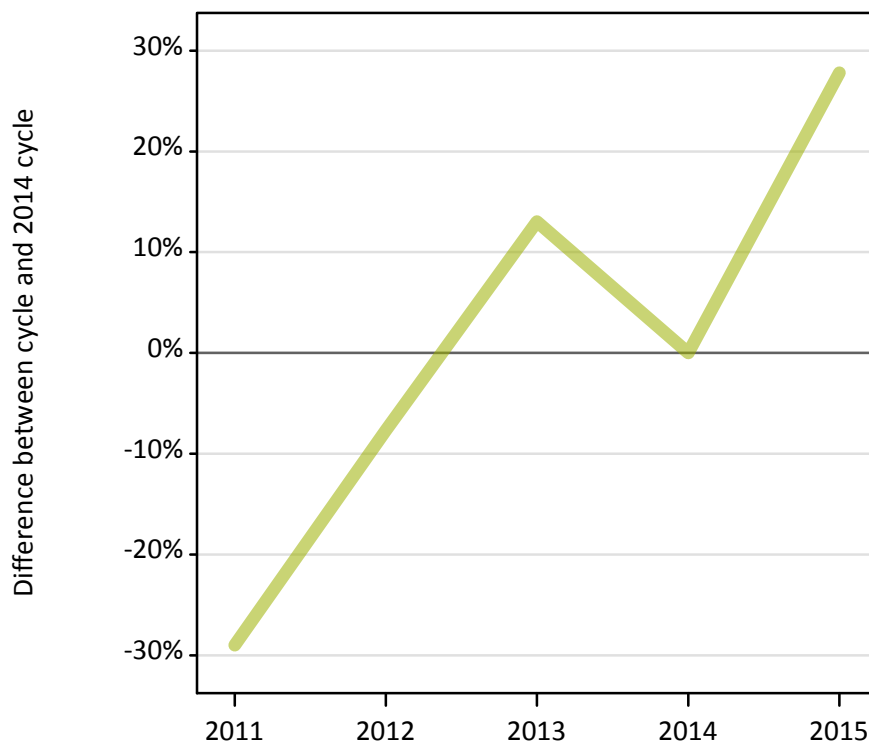
AX.14 Main scheme applicants not currently placed from the EU - excluding UK: 5 days after A level results day
 Applicants in unplaced states: difference between cycle and 2014 cycle

Applicant type	Status	2011	2012	2013	2014	2015
Main scheme	Holding offer	0%	-10%	-3%	0%	8%
	Free to be placed in Clearing	14%	-2%	-1%	0%	2%

AX.15 Direct to Clearing applicants from the EU - excluding UK: 5 days after A level results day

Placed (Direct to Clearing): difference between cycle and 2014 cycle

Placed (Direct to Clearing)



AX.16 Direct to Clearing applicants from the EU - excluding UK: 5 days after A level results day

Direct to Clearing 5 days after A level results day

Applicant type	Status	2011	2012	2013	2014	2015
Direct to Clearing	Placed (Direct to Clearing)	120	160	190	170	220
	Other (Direct to Clearing)	510	380	370	360	380

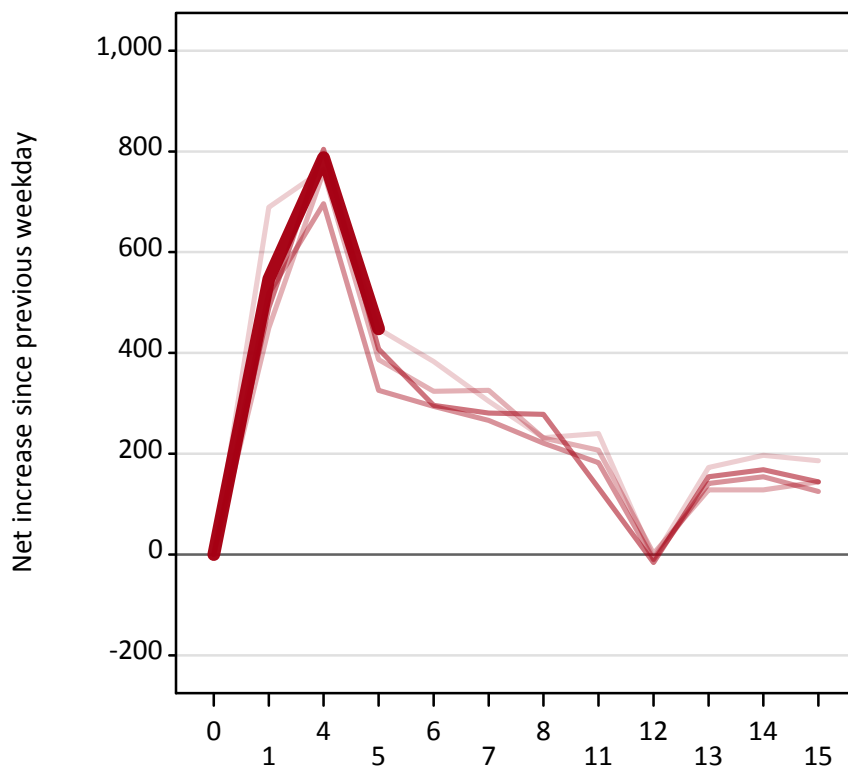
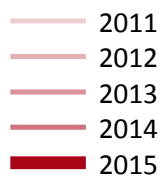
AX.17 Direct to Clearing applicants from the EU - excluding UK: 5 days after A level results day

Placed (Direct to Clearing): difference between cycle and 2014 cycle

Applicant type	Status	2011	2012	2013	2014	2015
Direct to Clearing	Placed (Direct to Clearing)	-29%	-8%	13%	0%	28%

AX.18 All Placed: Daily net change (from the EU - excluding UK)

Net increase since previous weekday (2015 cycle up to 5 days after A level results day)



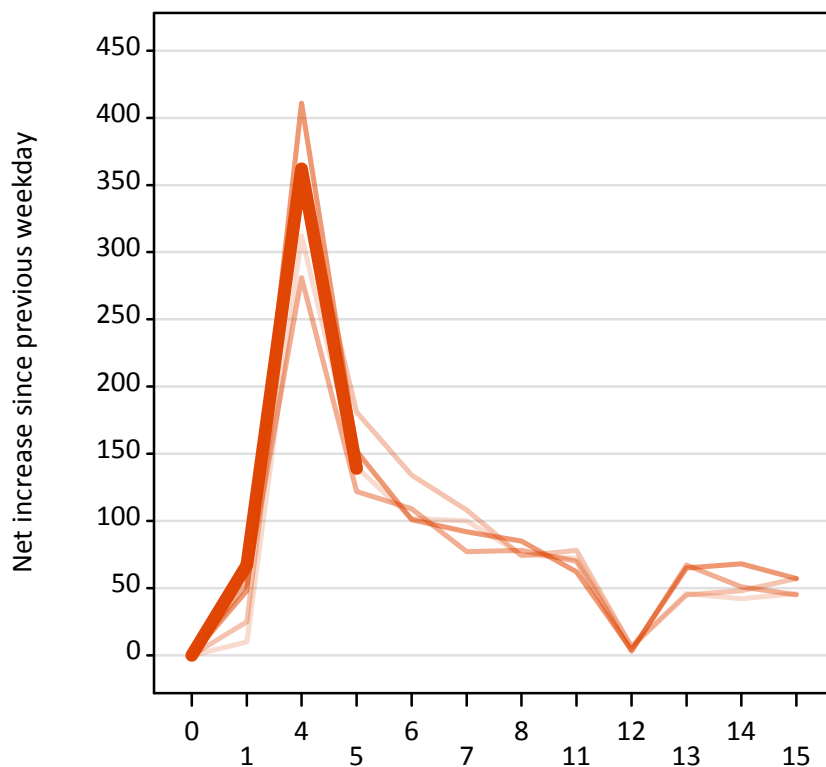
AX.19 All Placed: Daily net change (from the EU - excluding UK)

Net increase since previous weekday (2015 cycle up to 5 days after A level results day)

Applicant status, days since A level results day		2011	2012	2013	2014	2015
All Placed	0	0	0	0	0	0
	1	690	450	520	490	550
	4	760	760	700	800	790
	5	450	390	330	410	450
	6	380	320	290	300	
	7	300	330	270	280	
	8	230	230	220	280	
	11	240	210	180	130	
	12	-10	0	-10	-20	
	13	170	130	140	150	
	14	200	130	150	170	
	15	190	140	130	140	

AX.20 Placed through Clearing only: Daily net change (from the EU - excluding UK)
 Net increase since previous weekday (2015 cycle up to 5 days after A level results day)

- 2011
- 2012
- 2013
- 2014
- 2015

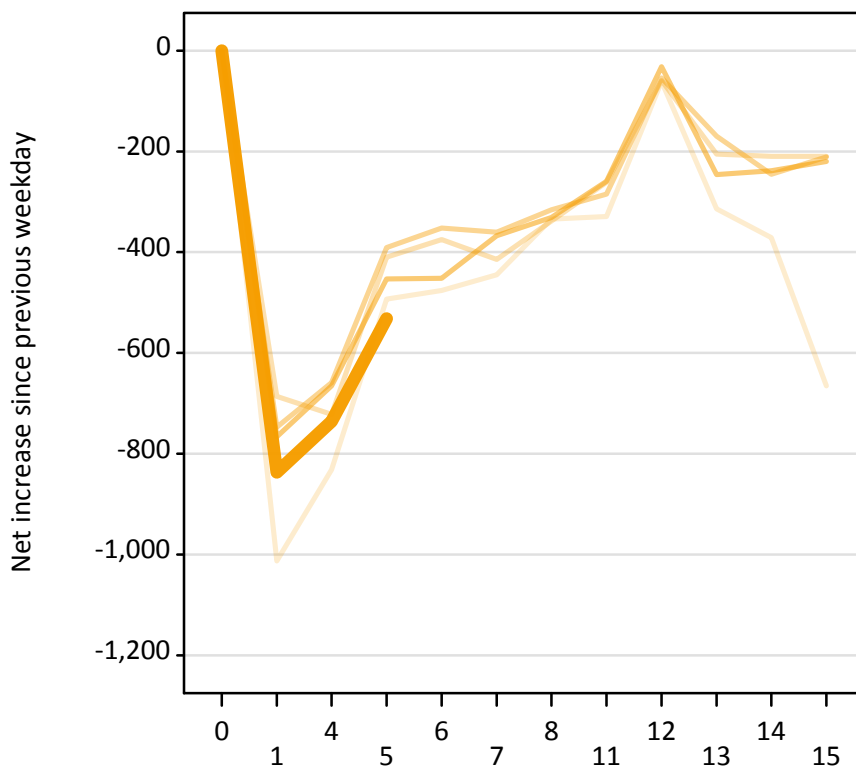
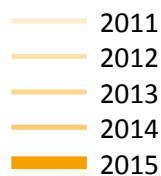


AX.21 Placed through Clearing only: Daily net change (from the EU - excluding UK)
 Net increase since previous weekday (2015 cycle up to 5 days after A level results day)

Applicant status, days since A level results day		2011	2012	2013	2014	2015
Placed through Clearing only	0	0	0	0	0	0
	1	10	30	50	50	70
	4	310	350	280	410	360
	5	140	180	120	150	140
	6	100	130	110	100	
	7	100	110	80	90	
	8	80	70	80	90	
	11	70	80	70	60	
	12	10	10	0	0	
	13	50	50	70	70	
	14	40	50	50	70	
	15	50	60	50	60	

AX.22 Holding Offer: Daily net change (from the EU - excluding UK)

Net increase since previous weekday (2015 cycle up to 5 days after A level results day)



AX.23 Holding Offer: Daily net change (from the EU - excluding UK)

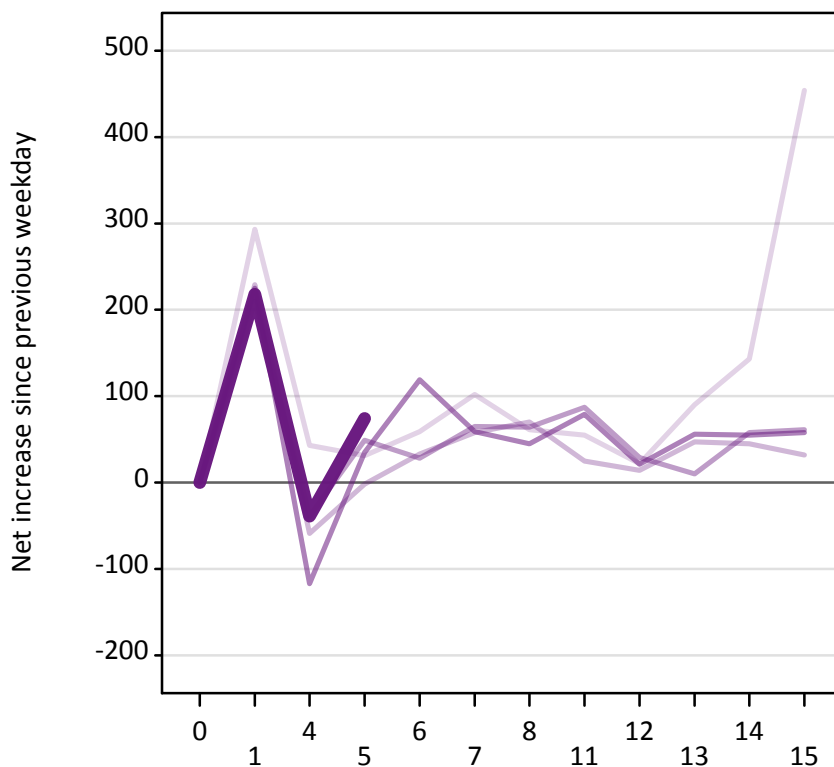
Net increase since previous weekday (2015 cycle up to 5 days after A level results day)

Applicant status, days since A level results day		2011	2012	2013	2014	2015
Holding Offer	0	0	0	0	0	0
	1	-1,010	-690	-750	-770	-840
	4	-830	-720	-660	-670	-740
	5	-490	-410	-390	-450	-530
	6	-480	-380	-350	-450	
	7	-450	-410	-360	-370	
	8	-330	-340	-320	-330	
	11	-330	-260	-290	-260	
	12	-60	-60	-50	-30	
	13	-310	-210	-170	-250	
	14	-370	-210	-250	-240	
	15	-670	-210	-210	-220	

AX.24 Free to be placed in Clearing: Daily net change (from the EU - excluding UK)

Net increase since previous weekday (2015 cycle up to 5 days after A level results day)

- 2011
- 2012
- 2013
- 2014
- 2015



AX.25 Free to be placed in Clearing: Daily net change (from the EU - excluding UK)

Net increase since previous weekday (2015 cycle up to 5 days after A level results day)

Applicant status, days since A level results day		2011	2012	2013	2014	2015
Free to be placed in Clearing	0	0	0	0	0	0
	1	290	230	210	230	220
	4	40	-60	-40	-120	-40
	5	30	0	50	40	70
	6	60	30	30	120	
	7	100	60	70	60	
	8	60	70	60	50	
	11	60	30	90	80	
	12	20	10	30	20	
	13	90	50	10	60	
	14	140	50	60	60	
	15	450	30	60	60	