

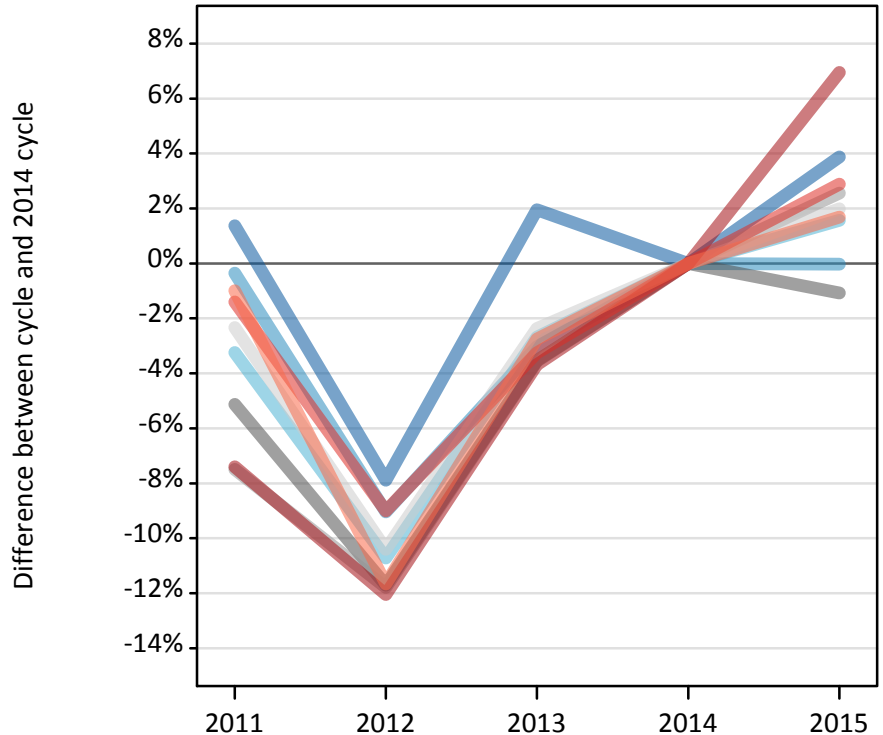
# Daily Clearing Analysis: Region

Analysis at 00:05 on Monday 17 August 2015 (4 days after A level results day)

R.1 Placed applicants by region of domicile: 4 days after A level results day

Placed applicants: change relative to 2014 cycle totals

- North East
- North West
- Yorkshire and The Humber
- East Midlands
- West Midlands
- East of England
- London
- South East
- South West



R.2 Placed applicants by region of domicile: 4 days after A level results day

Applicant Status	Domicile	2011	2012	2013	2014	2015
Placed	North East	14,450	13,130	14,540	14,260	14,810
	North West	44,600	40,710	43,410	44,760	44,750
	Yorkshire and The Humber	29,700	27,400	29,870	30,690	31,170
	East Midlands	24,850	23,120	25,260	26,190	25,910
	West Midlands	32,730	31,210	34,120	35,380	36,280
	East of England	33,680	30,890	33,660	34,480	35,170
	London	53,980	51,270	56,140	58,290	62,340
	South East	52,990	48,900	51,990	53,740	55,290
	South West	30,550	27,260	30,010	30,860	31,380
	(England total)	317,520	293,890	319,000	328,640	337,090
	Scotland	26,940	26,810	27,480	28,340	31,170
	Northern Ireland	12,180	11,300	12,630	12,610	12,420
	Wales	15,860	16,630	16,930	17,610	18,070
	UK	372,500	348,630	376,040	387,200	398,750

### R.3 Placed applicants by region of domicile: 4 days after A level results day

Placed applicants: change relative to 2014 cycle totals

Applicant Status	Domicile	2011	2012	2013	2014	2015
Placed	North East	1%	-8%	2%	0%	4%
	North West	-0%	-9%	-3%	0%	-0%
	Yorkshire and The Humber	-3%	-11%	-3%	0%	2%
	East Midlands	-5%	-12%	-4%	0%	-1%
	West Midlands	-7%	-12%	-4%	0%	3%
	East of England	-2%	-10%	-2%	0%	2%
	London	-7%	-12%	-4%	0%	7%
	South East	-1%	-9%	-3%	0%	3%
	South West	-1%	-12%	-3%	0%	2%
	(England total)	-3%	-11%	-3%	0%	3%
	Scotland	-5%	-5%	-3%	0%	10%
	Northern Ireland	-3%	-10%	0%	0%	-1%
	Wales	-10%	-6%	-4%	0%	3%
	UK	-4%	-10%	-3%	0%	3%

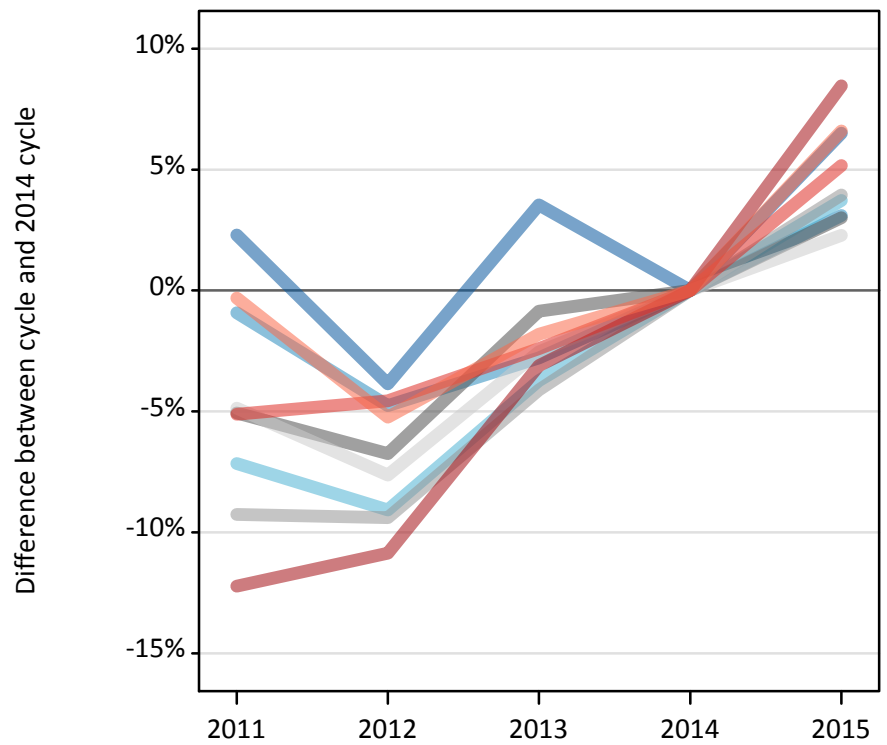
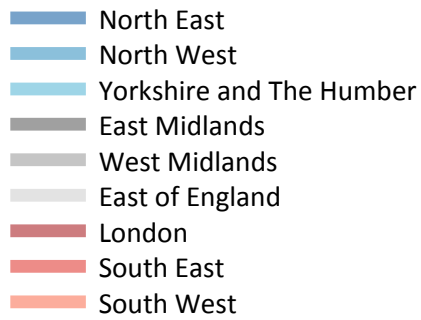
### R.4 Placed applicants by region of domicile: 4 days after A level results day

Placed applicants: absolute change relative to 2014 cycle totals

Applicant Status	Domicile	2011	2012	2013	2014	2015
Placed	North East	200	-1,130	280	0	550
	North West	-160	-4,050	-1,360	0	-10
	Yorkshire and The Humber	-1,000	-3,290	-820	0	480
	East Midlands	-1,340	-3,070	-930	0	-280
	West Midlands	-2,650	-4,170	-1,260	0	900
	East of England	-800	-3,590	-820	0	690
	London	-4,310	-7,020	-2,150	0	4,050
	South East	-750	-4,840	-1,750	0	1,550
	South West	-310	-3,600	-850	0	520
	(England total)	-11,120	-34,750	-9,650	0	8,450
	Scotland	-1,400	-1,530	-860	0	2,830
	Northern Ireland	-440	-1,310	20	0	-190
	Wales	-1,750	-980	-680	0	450
	UK	-14,710	-38,570	-11,170	0	11,550

### R.5 Placed 18 year old applicants by region of domicile: 4 days after A level results day

Placed 18 year old applicants: change relative to 2014 cycle totals



### R.6 Placed 18 year old applicants by region of domicile: 4 days after A level results day

Applicant Status	Domicile	2011	2012	2013	2014	2015
Placed	North East	7,700	7,230	7,790	7,520	8,010
	North West	24,840	23,880	24,370	25,070	25,850
	Yorkshire and The Humber	16,070	15,740	16,670	17,310	17,960
	East Midlands	13,790	13,550	14,410	14,530	14,970
	West Midlands	17,670	17,640	18,670	19,470	20,240
	East of England	19,700	19,130	20,180	20,710	21,180
	London	26,510	26,920	29,260	30,200	32,750
	South East	29,410	29,580	30,250	31,000	32,600
	South West	15,700	14,920	15,460	15,750	16,790
	(England total)	171,390	168,600	177,060	181,560	190,350
	Scotland	13,750	13,840	13,960	14,210	14,310
	Northern Ireland	7,700	7,270	7,880	7,670	7,590
	Wales	8,850	9,300	9,300	9,610	10,080
	UK	201,690	199,010	208,210	213,040	222,320

## R.7 Placed 18 year old applicants by region of domicile: 4 days after A level results day

Placed 18 year old applicants: change relative to 2014 cycle totals

Applicant Status	Domicile	2011	2012	2013	2014	2015
Placed	North East	2%	-4%	4%	0%	6%
	North West	-1%	-5%	-3%	0%	3%
	Yorkshire and The Humber	-7%	-9%	-4%	0%	4%
	East Midlands	-5%	-7%	-1%	0%	3%
	West Midlands	-9%	-9%	-4%	0%	4%
	East of England	-5%	-8%	-3%	0%	2%
	London	-12%	-11%	-3%	0%	8%
	South East	-5%	-5%	-2%	0%	5%
	South West	-0%	-5%	-2%	0%	7%
	(England total)	-6%	-7%	-2%	0%	5%
	Scotland	-3%	-3%	-2%	0%	1%
	Northern Ireland	0%	-5%	3%	0%	-1%
	Wales	-8%	-3%	-3%	0%	5%
	UK	-5%	-7%	-2%	0%	4%

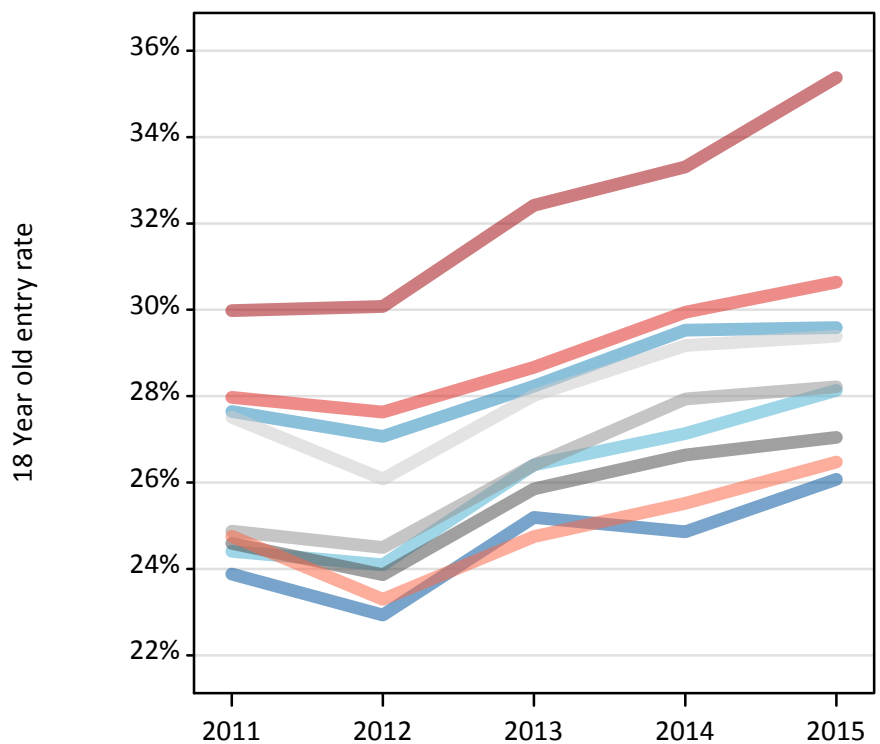
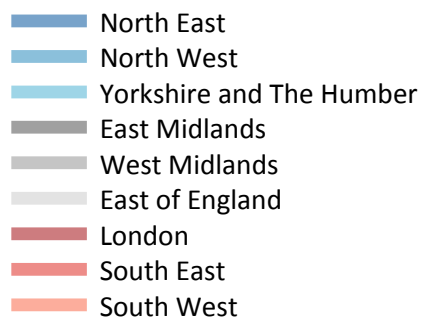
## R.8 Placed 18 year old applicants by region of domicile: 4 days after A level results day

Placed 18 year old applicants: absolute change relative to 2014 cycle totals

Applicant Status	Domicile	2011	2012	2013	2014	2015
Placed	North East	170	-290	270	0	490
	North West	-230	-1,190	-700	0	780
	Yorkshire and The Humber	-1,240	-1,570	-650	0	640
	East Midlands	-740	-980	-120	0	440
	West Midlands	-1,800	-1,830	-800	0	770
	East of England	-1,010	-1,580	-530	0	470
	London	-3,690	-3,280	-940	0	2,550
	South East	-1,590	-1,410	-750	0	1,600
	South West	-50	-830	-290	0	1,040
	(England total)	-10,170	-12,960	-4,500	0	8,790
	Scotland	-450	-370	-250	0	100
	Northern Ireland	30	-400	220	0	-80
	Wales	-760	-310	-310	0	470
	UK	-11,350	-14,040	-4,840	0	9,280

### R.9 Placed 18 year old applicants by region of domicile: 4 days after A level results day

Placed 18 year old applicants: entry rate



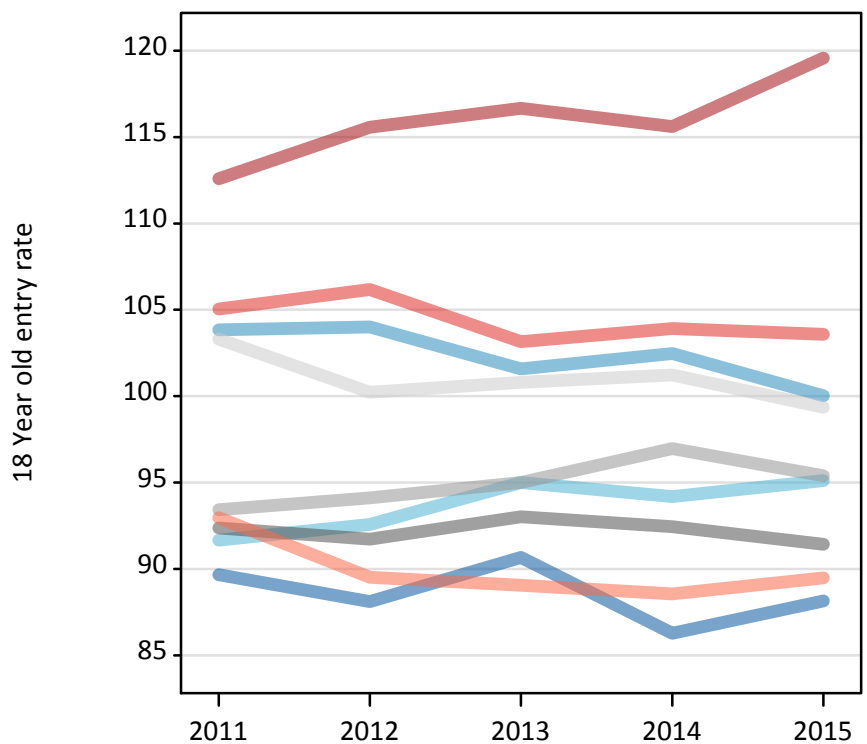
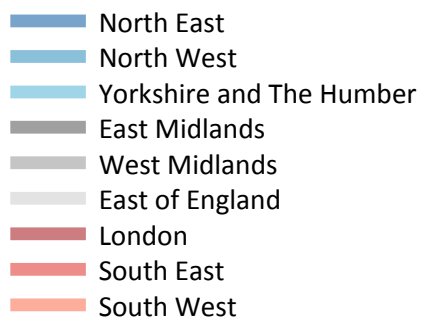
### R.10 Placed 18 year old applicants by region of domicile: 4 days after A level results day

Placed 18 year old applicants: entry rate

Applicant Status	Domicile	2011	2012	2013	2014	2015
Placed	North East	23.9%	22.9%	25.2%	24.9%	26.1%
	North West	27.6%	27.1%	28.2%	29.5%	29.6%
	Yorkshire and The Humber	24.4%	24.1%	26.4%	27.1%	28.1%
	East Midlands	24.6%	23.9%	25.9%	26.6%	27.0%
	West Midlands	24.9%	24.5%	26.4%	27.9%	28.2%
	East of England	27.5%	26.1%	28.0%	29.2%	29.4%
	London	30.0%	30.1%	32.4%	33.3%	35.4%
	South East	28.0%	27.6%	28.7%	29.9%	30.6%
	South West	24.8%	23.3%	24.8%	25.5%	26.5%
	(England total)	26.6%	26.0%	27.8%	28.8%	29.6%
	Scotland	21.9%	22.3%	22.7%	23.2%	23.8%
	Northern Ireland	30.8%	28.9%	32.2%	31.6%	30.6%
	Wales	22.9%	24.1%	24.6%	25.6%	26.7%
	UK	26.2%	25.7%	27.4%	28.3%	29.0%

### R.11 Placed 18 year old applicants by region of domicile: 4 days after A level results day

Placed 18 year old applicants: entry rates (indexed to 100 = England)



### R.12 Placed 18 year old applicants by region of domicile: 4 days after A level results day

Placed 18 year old applicants: entry rate (indexed to 100 = England)

Applicant Status	Domicile	2011	2012	2013	2014	2015
Placed	North East	90	88	91	86	88
	North West	104	104	102	102	100
	Yorkshire and The Humber	92	93	95	94	95
	East Midlands	92	92	93	92	91
	West Midlands	93	94	95	97	95
	East of England	103	100	101	101	99
	London	113	116	117	116	120
	South East	105	106	103	104	104
	South West	93	90	89	89	89
	(England total)	100	100	100	100	100