

## C20 Cardiff Metropolitan University

**Cycle years:** 2014 - 2019

**Cycle Reference Point:** End of Cycle

**Applicant coverage:** UK domiciled

**Reporting groups:** Sex, POLAR4, ethnic group

**Applicant statistics:** June deadline applicants, placed June deadline applicants, all placed applicants, June deadline applicants per 10,000 population, placed June deadline applicants per 10,000 population, all placed applicants per 10,000 population

**Application statistics:** June deadline applications, offers, offer rate, average offer rate, percentage point difference between offer rate and average offer rate, contribution of group to the average offer rate

**Non-disclosure controls:** To avoid the disclosure of information about any individual the following measures are taken

- Applicants, placed applicants, applications and offers are rounded to the nearest 5.
- Applicants/placed applicants per 10,000 population figures are reported as 0 if the applicant/placed applicant figures are rounded to 0.
- All statistics related to the offer rate are not reported when the number of applications for a group is less than 10. The percentage point difference between the offer rate and the average offer rate is not reported when the number of applications for a group is less than 50.
- Offer rates are reported as 0% if there are fewer than 5 offers, and 100% if the number of offers is within 5 of the number of applications. When the offer rate is reported as 0% or 100%, it is reported in italics.

### Contents:

18 year old applicants:	P.1
18 year old applications:	P.2
18 year old applicants by sex:	P.3
18 year old applications by sex:	P.4
18 year old applicants by POLAR4 quintile:	P.7
18 year old applications by POLAR4 quintile:	P.8
18 year old applicants by ethnic group:	P.11
18 year old applications by ethnic group:	P.12
Applicants (all ages):	P.15
Applications (all ages):	P.16
Applicants (all ages) by sex:	P.17
Applications (all ages) by sex:	P.18
Applicants (all ages) by POLAR4 quintile:	P.19
Applications (all ages) by POLAR4 quintile:	P.20
Applicants (all ages) by ethnic group:	P.21
Applications (all ages) by ethnic group:	P.22

## P.1 18 year old applicants

Statistic	2014	2015	2016	2017	2018	2019
June deadline applicants	4,345	4,355	4,065	4,290	4,120	4,100
Placed June deadline applicants	1,110	1,010	920	1,070	1,095	975
All placed applicants	1,355	1,230	1,150	1,275	1,265	1,180
June deadline applicants per 10,000 population	57.7	56.9	54.3	57.9	57.1	58.0
Placed June deadline applicants per 10,000	14.7	13.2	12.2	14.5	15.1	13.8
All placed applicants per 10,000 population	18.0	16.0	15.3	17.2	17.5	16.7

## P.2 18 year old applications

Statistic	2014	2015	2016	2017	2018	2019
June deadline applications	4,870	4,885	4,540	4,750	4,660	4,620
Offers	4,120	4,095	3,885	4,140	4,355	4,155
Offer rate	84.6%	83.8%	85.6%	87.2%	93.5%	89.9%

### P.3 18 year old applicants by sex

Statistic	Sex	2014	2015	2016	2017	2018	2019
June deadline applicants	Men	1,990	1,995	1,825	1,990	1,830	1,855
	Women	2,355	2,360	2,240	2,300	2,290	2,250
Placed June deadline applicants	Men	560	460	450	520	485	470
	Women	550	550	470	550	605	505
All placed applicants	Men	655	550	540	605	565	555
	Women	695	680	610	670	700	625
June deadline applicants per 10,000 population	Men	51.4	50.8	47.5	52.4	49.5	51.2
	Women	64.4	63.2	61.4	63.7	65.1	65.1
Placed June deadline applicants per 10,000 population	Men	14.4	11.7	11.7	13.7	13.1	13.0
	Women	15.1	14.8	12.8	15.3	17.2	14.6
All placed applicants per 10,000 population	Men	17.0	14.0	14.0	15.9	15.2	15.4
	Women	19.0	18.2	16.7	18.5	20.0	18.1

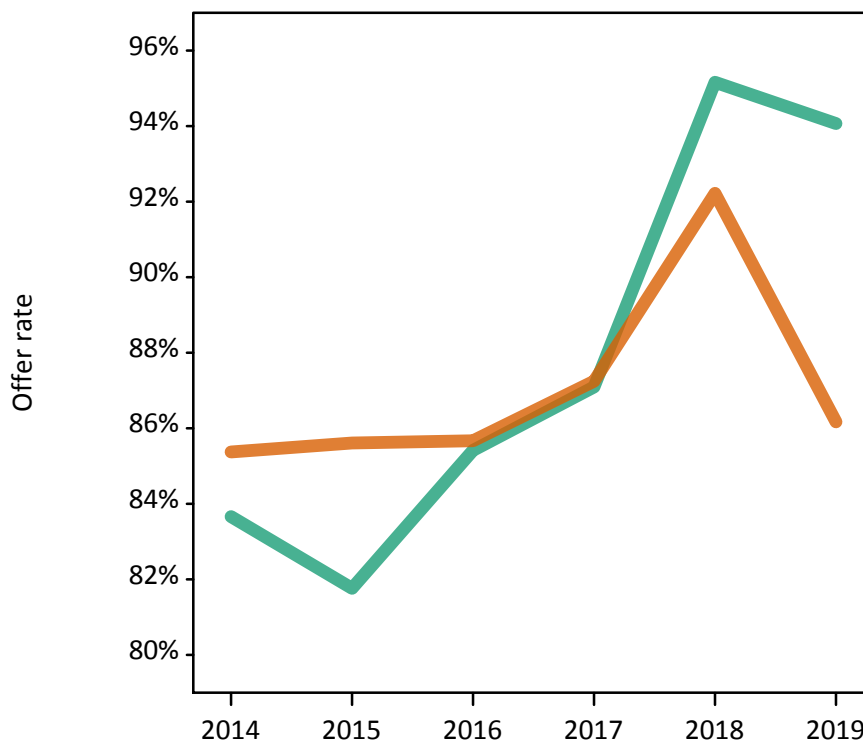
### P.4 18 year old applications by sex

Statistic	Sex	2014	2015	2016	2017	2018	2019
June deadline applications	Men	2,325	2,300	2,080	2,215	2,085	2,155
	Women	2,545	2,585	2,465	2,530	2,570	2,465
Offers	Men	1,945	1,880	1,775	1,930	1,985	2,030
	Women	2,170	2,215	2,110	2,210	2,370	2,125
Offer rate	Men	83.7%	81.8%	85.4%	87.1%	95.2%	94.1%
	Women	85.4%	85.6%	85.7%	87.2%	92.2%	86.2%
Average offer rate	Men	84.5%	83.0%	86.7%	87.2%	95.3%	94.1%
	Women	84.6%	84.5%	84.6%	87.2%	92.1%	86.1%
Percentage point difference between offer rate and average offer rate	Men	-0.8	-1.2	-1.3	-0.1	-0.2	-0.1
	Women	0.7	1.1	1.1	0.1	0.2	0.1
Contribution of group to the average offer rate	Men	0.666	0.655	0.603	0.619	0.604	0.617
	Women	0.695	0.693	0.665	0.667	0.679	0.665

### P.5 18 year old offer rate by sex

Note: The line for a group is not plotted when that group made fewer than 10 applications in any of the years from 2014-2019.

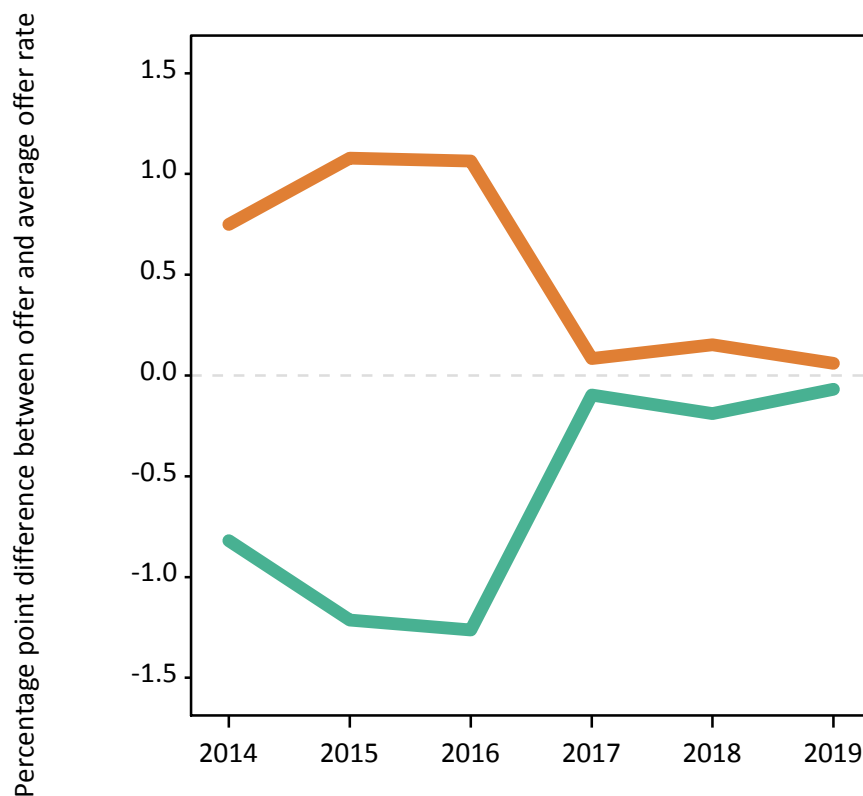
Men  
Women



### P.6 Percentage point difference between 18 year old offer rate and average offer rate by sex

Note: The line for a group is not plotted when that group made fewer than 50 applications in any of the years from 2014-2019.

Men  
Women



## P.7 18 year old applicants by POLAR4 quintile

Statistic	POLAR4 quintile	2014	2015	2016	2017	2018	2019
June deadline applicants	Quintile 1	645	665	625	665	605	595
	Quintile 2	935	940	915	905	870	860
	Quintile 3	970	975	900	1,000	905	900
	Quintile 4	845	850	720	835	810	815
	Quintile 5	935	925	890	870	915	910
Placed June deadline applicants	Quintile 1	155	170	160	175	160	145
	Quintile 2	255	235	200	240	245	215
	Quintile 3	280	230	210	265	255	235
	Quintile 4	205	175	160	190	220	165
	Quintile 5	210	195	185	200	205	205
All placed applicants	Quintile 1	190	205	190	215	190	175
	Quintile 2	310	275	250	280	280	260
	Quintile 3	325	280	255	310	295	285
	Quintile 4	255	215	210	225	255	200
	Quintile 5	275	250	245	240	235	255
June deadline applicants per 10,000 population	Quintile 1	45.7	46.9	46.0	49.8	46.5	46.9
	Quintile 2	65.2	64.4	64.6	64.9	64.1	65.3
	Quintile 3	66.3	65.0	61.5	69.1	64.1	65.4
	Quintile 4	55.6	54.7	47.3	55.4	55.0	56.2
	Quintile 5	55.1	53.2	51.6	50.8	54.4	54.9
Placed June deadline applicants per 10,000 population	Quintile 1	10.9	11.9	11.6	13.2	12.5	11.5
	Quintile 2	17.9	16.2	14.0	17.1	18.0	16.4
	Quintile 3	19.1	15.5	14.3	18.4	18.2	17.1
	Quintile 4	13.6	11.4	10.6	12.5	15.0	11.5
	Quintile 5	12.3	11.3	10.8	11.5	12.2	12.5
All placed applicants per 10,000 population	Quintile 1	13.4	14.6	13.9	16.1	14.7	13.9
	Quintile 2	21.5	18.8	17.5	20.1	20.7	19.8
	Quintile 3	22.1	18.5	17.5	21.4	21.1	20.6
	Quintile 4	16.6	13.9	13.8	14.7	17.2	13.9
	Quintile 5	16.2	14.5	14.1	14.1	14.1	15.3

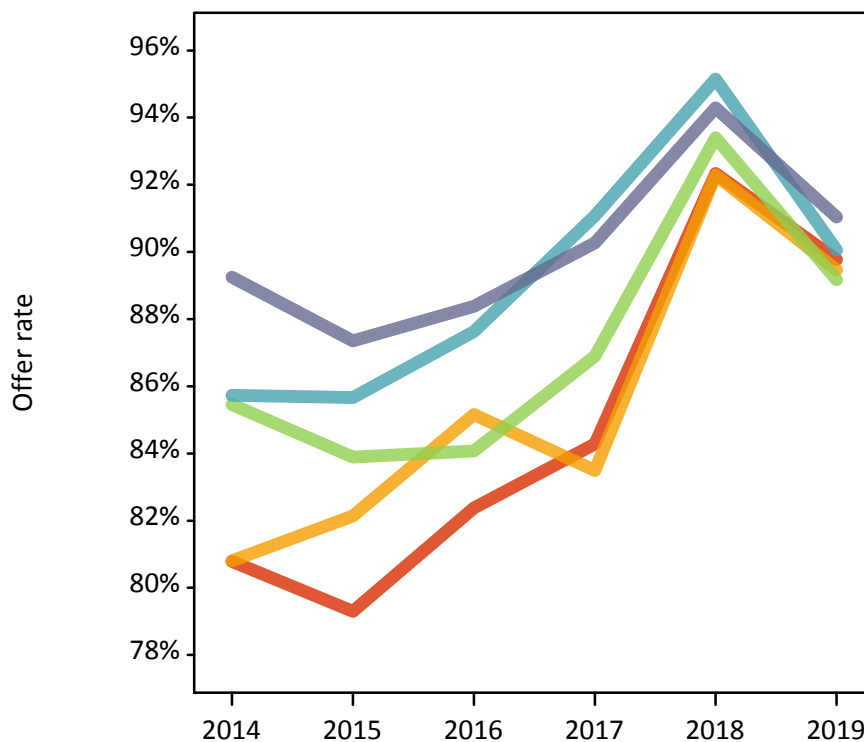
## P.8 18 year old applications by POLAR4 quintile

Statistic	POLAR4 quintile	2014	2015	2016	2017	2018	2019
June deadline applications	Quintile 1	735	775	730	750	705	695
	Quintile 2	1,100	1,085	1,040	1,030	1,000	980
	Quintile 3	1,085	1,080	1,030	1,120	1,030	1,025
	Quintile 4	925	930	785	910	905	905
	Quintile 5	1,015	1,010	945	925	1,000	1,005
Offers	Quintile 1	595	615	605	635	650	625
	Quintile 2	890	890	885	860	920	875
	Quintile 3	930	905	865	975	965	915
	Quintile 4	795	795	685	825	865	815
	Quintile 5	905	885	835	835	940	915
Offer rate	Quintile 1	80.8%	79.3%	82.4%	84.3%	92.3%	89.8%
	Quintile 2	80.8%	82.1%	85.2%	83.5%	92.3%	89.5%
	Quintile 3	85.5%	83.9%	84.1%	86.9%	93.4%	89.2%
	Quintile 4	85.7%	85.7%	87.6%	91.1%	95.1%	90.1%
	Quintile 5	89.3%	87.4%	88.4%	90.3%	94.3%	91.0%
Average offer rate	Quintile 1	83.0%	82.6%	83.9%	86.4%	93.9%	90.3%
	Quintile 2	83.4%	82.5%	86.3%	86.3%	93.2%	89.7%
	Quintile 3	83.4%	83.5%	85.3%	86.6%	92.9%	89.6%
	Quintile 4	85.0%	84.8%	85.5%	88.0%	94.2%	89.6%
	Quintile 5	87.7%	85.6%	86.3%	88.8%	93.6%	90.4%
Percentage point difference between offer rate and average offer rate	Quintile 1	-2.2	-3.3	-1.6	-2.1	-1.6	-0.6
	Quintile 2	-2.6	-0.4	-1.1	-2.8	-0.9	-0.2
	Quintile 3	2.1	0.4	-1.3	0.3	0.5	-0.4
	Quintile 4	0.7	0.9	2.1	3.1	0.9	0.4
	Quintile 5	1.6	1.7	2.1	1.5	0.7	0.6
Contribution of group to the average offer rate	Quintile 1	0.234	0.237	0.239	0.240	0.238	0.242
	Quintile 2	0.304	0.293	0.292	0.287	0.288	0.293
	Quintile 3	0.295	0.286	0.294	0.301	0.299	0.302
	Quintile 4	0.260	0.259	0.244	0.252	0.274	0.267
	Quintile 5	0.314	0.297	0.296	0.293	0.309	0.307

### P.9 18 year old offer rate by POLAR4 quintile

Note: The line for a group is not plotted when that group made fewer than 10 applications in any of the years from 2014-2019.

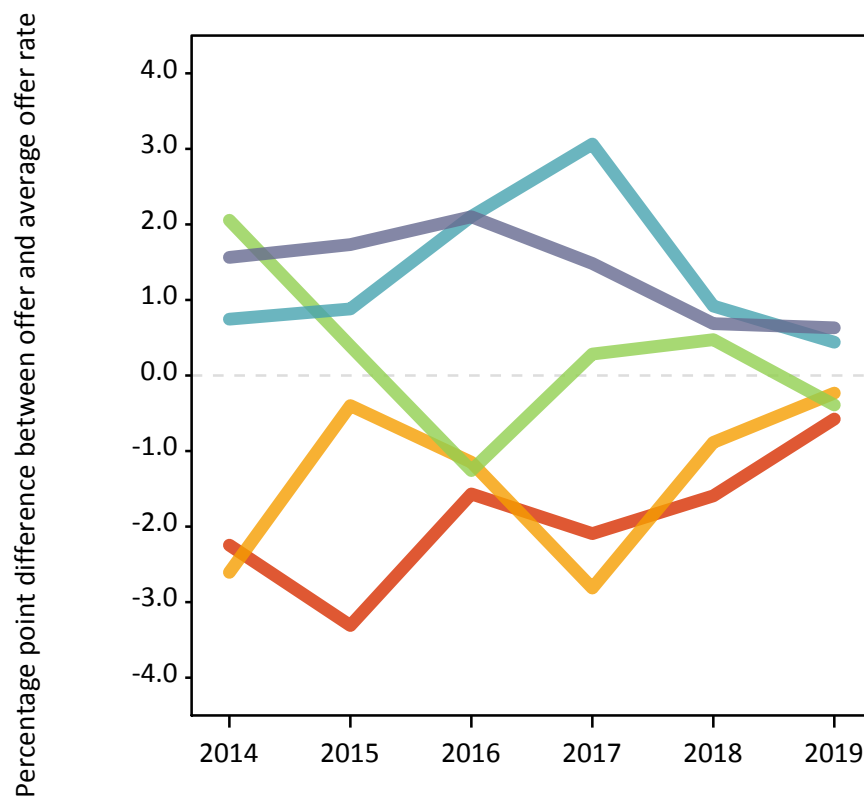
- Quintile 1
- Quintile 2
- Quintile 3
- Quintile 4
- Quintile 5



### P.10 Percentage point difference between 18 year old offer rate and average offer rate by POLAR4 quintile

Note: The line for a group is not plotted when that group made fewer than 50 applications in any of the years from 2014-2019.

- Quintile 1
- Quintile 2
- Quintile 3
- Quintile 4
- Quintile 5



## P.11 18 year old applicants by ethnic group

Statistic	Ethnic group	2014	2015	2016	2017	2018	2019
June deadline applicants	White	3,960	3,950	3,665	3,880	3,720	3,690
	Black	65	90	85	80	80	75
	Asian	175	170	170	170	160	170
	Mixed	115	110	105	110	125	135
	Other	25	25	30	35	25	30
Placed June deadline applicants	White	1,025	920	845	990	980	865
	Black	10	10	15	15	20	20
	Asian	35	40	20	30	40	45
	Mixed	30	30	20	20	40	35
	Other	5	5	5	10	10	10
All placed applicants	White	1,240	1,095	1,035	1,155	1,115	1,030
	Black	20	20	25	25	25	30
	Asian	50	65	40	45	55	65
	Mixed	35	40	30	30	50	40
	Other	10	10	15	15	15	10
June deadline applicants per 10,000 population	White	64.2	63.4	60.6	65.4	65.1	66.7
	Black	22.1	28.0	27.2	24.8	25.2	23.0
	Asian	25.7	24.0	23.3	23.0	21.4	21.5
	Mixed	40.7	36.3	33.7	34.9	39.2	40.4
	Other	26.9	25.9	28.1	34.0	25.2	24.9
Placed June deadline applicants per 10,000 population	White	16.6	14.8	14.0	16.7	17.2	15.6
	Black	4.0	3.8	5.1	4.1	6.2	6.7
	Asian	5.3	5.9	3.1	4.1	5.0	5.5
	Mixed	10.4	9.1	7.0	6.2	12.6	10.0
	Other	5.4	7.3	7.0	10.7	10.3	8.0
All placed applicants per 10,000 population	White	20.1	17.6	17.1	19.4	19.5	18.6
	Black	5.9	6.9	8.6	7.6	8.4	8.8
	Asian	7.1	8.9	5.4	6.3	7.3	8.3
	Mixed	12.9	12.3	8.9	9.0	15.1	12.2
	Other	9.7	8.3	13.1	13.6	14.0	10.7



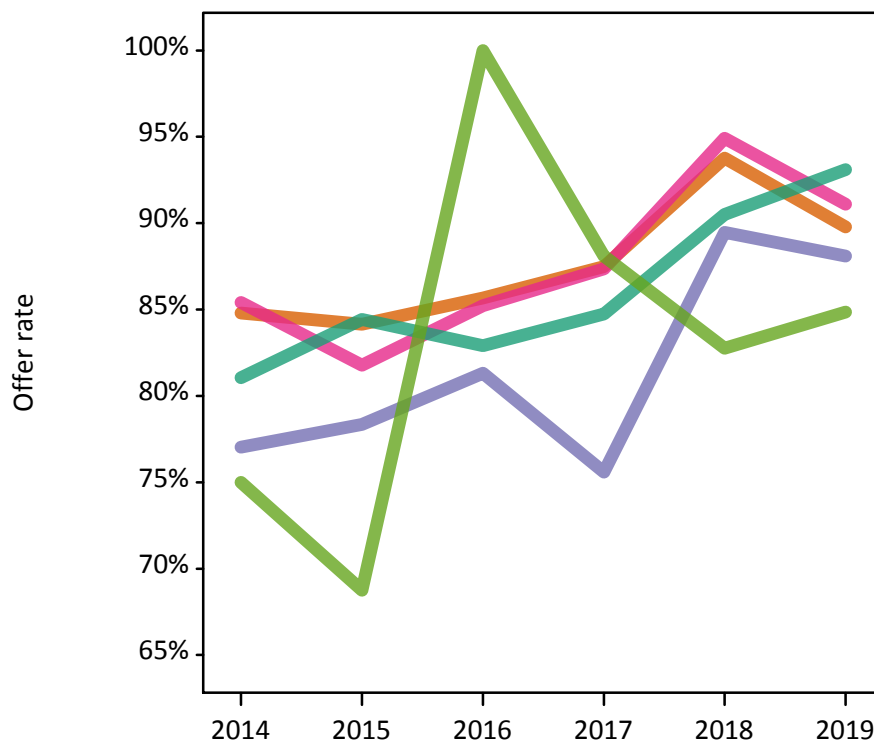
## P.12 18 year old applications by ethnic group

Statistic	Ethnic group	2014	2015	2016	2017	2018	2019
June deadline applications	White	4,440	4,430	4,110	4,300	4,215	4,160
	Black	75	95	90	85	95	85
	Asian	190	190	175	180	175	190
	Mixed	130	120	115	120	135	145
	Other	30	30	35	40	30	35
Offers	White	3,765	3,730	3,520	3,760	3,950	3,735
	Black	55	75	75	65	85	75
	Asian	165	155	150	160	170	175
	Mixed	105	105	95	100	125	135
	Other	20	20	30	35	25	30
Offer rate	White	84.8%	84.2%	85.7%	87.5%	93.8%	89.8%
	Black	77.0%	78.4%	81.3%	75.6%	89.5%	88.1%
	Asian	85.4%	81.8%	85.2%	87.4%	94.9%	91.1%
	Mixed	81.1%	84.4%	82.9%	84.7%	90.5%	93.1%
	Other	75.0%	68.8%	100.0%	88.1%	82.8%	84.8%
Average offer rate	White	84.4%	83.8%	85.4%	87.1%	93.6%	89.7%
	Black	86.4%	83.3%	85.4%	82.6%	93.3%	90.3%
	Asian	87.9%	84.4%	87.2%	89.6%	94.2%	91.2%
	Mixed	84.5%	84.9%	86.2%	88.0%	93.0%	93.0%
	Other	85.0%	87.8%	93.2%	89.2%	90.5%	89.5%
Percentage point difference between offer rate and average offer rate	White	0.4	0.4	0.3	0.4	0.2	0.1
	Black	-9.3	-5.0	-4.1	-7.0	-3.9	-2.2
	Asian	-2.5	-2.6	-1.9	-2.2	0.7	-0.1
	Mixed	-3.5	-0.5	-3.3	-3.2	-2.5	0.2
	Other	N/A	N/A	N/A	N/A	N/A	N/A
Contribution of group to the average offer rate	White	0.928	0.924	0.919	0.921	0.919	0.917
	Black	0.151	0.151	0.107	0.165	0.152	0.120
	Asian	0.235	0.230	0.188	0.179	0.199	0.218
	Mixed	0.120	0.096	0.091	0.110	0.108	0.133
	Other	0.116	0.149	0.111	0.113	0.165	0.148

### P.13 18 year old offer rate by ethnic group

Note: The line for a group is not plotted when that group made fewer than 10 applications in any of the years from 2014-2019.

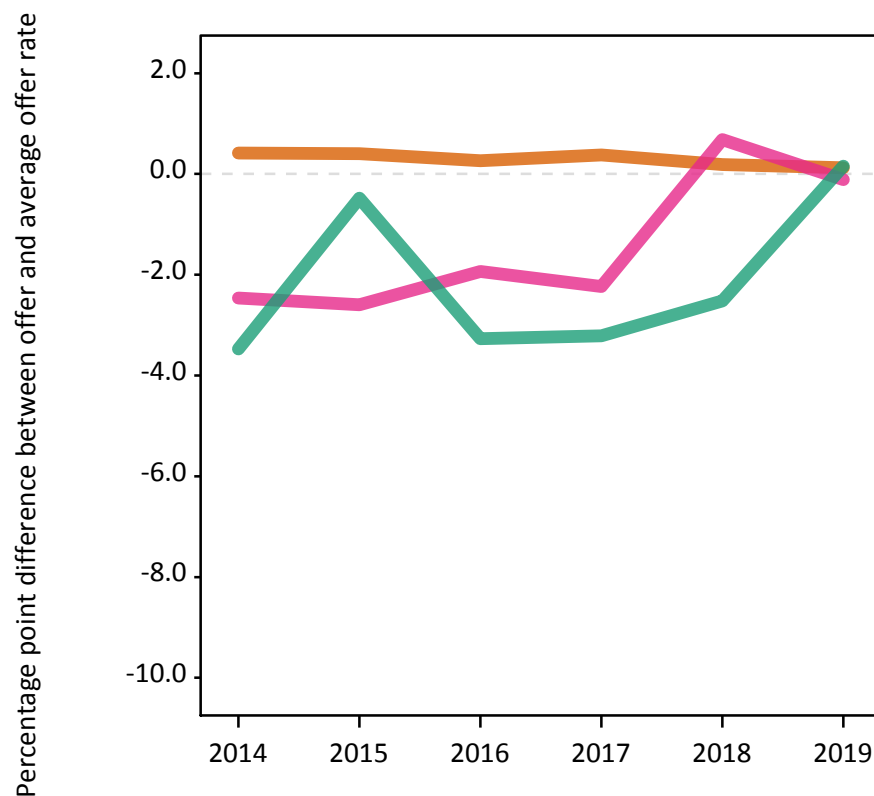
- White
- Black
- Asian
- Mixed
- Other



### P.14 Percentage point difference between 18 year old offer rate and average offer rate by ethnic group

Note: The line for a group is not plotted when that group made fewer than 50 applications in any of the years from 2014-2019.

- White
- Black
- Asian
- Mixed
- Other



### P.15 Applicants (all ages)

Statistic	2014	2015	2016	2017	2018	2019
June deadline applicants	8,420	8,225	7,750	7,765	7,315	7,230
Placed June deadline applicants	2,280	2,045	1,945	2,075	2,115	1,910
All placed applicants	2,920	2,635	2,530	2,665	2,600	2,490

### P.16 Applications (all ages)

Statistic	2014	2015	2016	2017	2018	2019
June deadline applications	9,625	9,335	8,805	8,685	8,295	8,230
Offers	7,535	7,235	6,905	7,195	7,290	6,945
Offer rate	78.3%	77.5%	78.4%	82.8%	87.9%	84.4%

### P.17 Applicants (all ages) by sex

Statistic	Sex	2014	2015	2016	2017	2018	2019
June deadline applicants	Men	3,840	3,790	3,480	3,525	3,275	3,225
	Women	4,575	4,440	4,265	4,240	4,040	4,005
Placed June deadline applicants	Men	1,085	895	890	940	915	875
	Women	1,195	1,150	1,055	1,135	1,200	1,035
All placed applicants	Men	1,365	1,175	1,150	1,205	1,140	1,135
	Women	1,555	1,460	1,380	1,460	1,460	1,355

### P.18 Applications (all ages) by sex

Statistic	Sex	2014	2015	2016	2017	2018	2019
June deadline applications	Men	4,545	4,395	4,005	3,965	3,710	3,765
	Women	5,080	4,940	4,795	4,725	4,585	4,465
Offers	Men	3,565	3,360	3,190	3,335	3,355	3,350
	Women	3,970	3,875	3,720	3,865	3,935	3,595
Offer rate	Men	78.5%	76.5%	79.6%	84.1%	90.4%	89.0%
	Women	78.2%	78.4%	77.5%	81.8%	85.9%	80.5%

### P.19 Applicants (all ages) by POLAR4 quintile

Statistic	POLAR4 quintile	2014	2015	2016	2017	2018	2019
June deadline applicants	Quintile 1	1,330	1,380	1,305	1,285	1,240	1,200
	Quintile 2	1,885	1,785	1,770	1,725	1,590	1,540
	Quintile 3	1,760	1,750	1,650	1,680	1,545	1,535
	Quintile 4	1,565	1,545	1,355	1,465	1,305	1,390
	Quintile 5	1,860	1,760	1,645	1,580	1,610	1,530
Placed June deadline applicants	Quintile 1	330	365	385	370	380	320
	Quintile 2	535	460	445	480	480	425
	Quintile 3	525	440	385	450	470	420
	Quintile 4	405	360	330	350	365	350
	Quintile 5	480	420	395	420	415	390
All placed applicants	Quintile 1	440	485	485	495	475	445
	Quintile 2	675	585	570	620	600	555
	Quintile 3	635	535	505	570	565	535
	Quintile 4	515	455	425	435	440	445
	Quintile 5	640	565	535	540	510	500

### P.20 Applications (all ages) by POLAR4 quintile

Statistic	POLAR4 quintile	2014	2015	2016	2017	2018	2019
June deadline applications	Quintile 1	1,560	1,630	1,545	1,465	1,425	1,395
	Quintile 2	2,200	2,080	2,060	1,990	1,850	1,765
	Quintile 3	2,005	1,955	1,885	1,885	1,760	1,775
	Quintile 4	1,765	1,725	1,500	1,610	1,465	1,560
	Quintile 5	2,080	1,930	1,795	1,715	1,760	1,695
Offers	Quintile 1	1,160	1,155	1,165	1,175	1,225	1,145
	Quintile 2	1,640	1,585	1,590	1,570	1,590	1,475
	Quintile 3	1,595	1,545	1,485	1,555	1,545	1,495
	Quintile 4	1,435	1,370	1,190	1,390	1,320	1,340
	Quintile 5	1,695	1,575	1,460	1,485	1,585	1,465
Offer rate	Quintile 1	74.3%	71.0%	75.6%	80.3%	86.0%	82.1%
	Quintile 2	74.6%	76.2%	77.1%	79.1%	85.9%	83.4%
	Quintile 3	79.5%	78.8%	78.8%	82.6%	87.8%	84.3%
	Quintile 4	81.3%	79.4%	79.4%	86.4%	90.2%	85.8%
	Quintile 5	81.5%	81.5%	81.4%	86.6%	89.9%	86.6%

## P.21 Applicants (all ages) by ethnic group

Statistic	Ethnic group	2014	2015	2016	2017	2018	2019
June deadline applicants	White	7,450	7,200	6,745	6,810	6,395	6,320
	Black	245	265	285	260	235	205
	Asian	380	400	370	335	340	345
	Mixed	240	255	230	230	250	240
	Other	75	75	80	85	65	85
Placed June deadline applicants	White	2,055	1,830	1,700	1,850	1,840	1,660
	Black	45	45	60	55	60	50
	Asian	85	85	75	80	95	95
	Mixed	65	65	70	55	85	65
	Other	20	15	25	20	25	30
All placed applicants	White	2,535	2,275	2,120	2,280	2,195	2,080
	Black	90	90	110	115	105	100
	Asian	140	140	130	125	130	145
	Mixed	90	90	85	85	105	90
	Other	40	20	45	45	35	45

## P.22 Applications (all ages) by ethnic group

Statistic	Ethnic group	2014	2015	2016	2017	2018	2019
June deadline applications	White	8,500	8,170	7,655	7,615	7,280	7,205
	Black	275	295	335	290	260	220
	Asian	440	455	410	375	375	395
	Mixed	285	290	255	250	270	265
	Other	95	90	105	100	80	95
Offers	White	6,720	6,405	6,075	6,385	6,460	6,120
	Black	175	175	205	185	200	170
	Asian	335	355	320	315	320	330
	Mixed	210	220	200	195	225	225
	Other	70	55	75	80	55	65
Offer rate	White	79.1%	78.4%	79.4%	83.8%	88.7%	84.9%
	Black	64.1%	59.6%	62.2%	63.7%	77.4%	75.7%
	Asian	76.0%	77.7%	77.9%	83.3%	84.8%	83.6%
	Mixed	74.6%	75.7%	77.4%	77.9%	83.2%	86.3%
	Other	70.8%	64.8%	73.1%	78.0%	73.1%	69.1%

## Technical Notes and Definitions

### UCAS undergraduate scheme

#### Adjustment

Adjustment allows applicants who have met and exceeded the terms of their conditional firm offer to seek and find a place at another provider whilst keeping their place at their original firm choice provider.

#### Clearing

Clearing is a route for applicants that are not placed and holding no offers to find a place on courses with vacancies.

#### Cycle year

The UCAS application cycle which runs from September to October the following year. For example the 2019 cycle runs from September 2018 through to October 2019.

#### End of cycle

The point in the cycle to which the numbers in this report refer, and the point at which the cycle is closed such that no more applications or offers can be made, and no more applicants can be placed. Numbers reported at the end of cycle exclude information on a small number of applicants who cancelled during the cycle.

#### Extra

Applicants who are unsuccessful in obtaining an offer or decline all offers may be eligible to apply through Extra, where they can apply to one further course at a time. Extra operates from 25 February until early July. It provides applicants who are eligible the possibility of obtaining an offer before exam results are published and Clearing starts.

#### June 30 deadline

The deadline for main scheme applications. Applicants who apply after this date will go directly into Clearing.

#### Record of Prior Acceptance (RPA)

RPA is an acceptance route used when a provider informs UCAS of applicants it has accepted outside of the normal application process (e.g. individuals who have applied directly to the provider).

### Reporting groups

#### Ethnic group

High level grouping of ethnic origin as declared by the applicant: 'White', 'Black', 'Asian', 'Mixed', 'Other', 'Unknown'. Applicants who declare themselves as 'Unknown' ethnic origin are not reported in these tables, but are included in the associated csv data file.

#### POLAR4 quintile

Developed by OfS, POLAR4 classifies small areas across the UK into five groups according to their level of young participation in Higher Education. Each of these groups represents around 20 per cent of young people and is ranked from Quintile 1 (areas with the lowest young participation rates, considered as the most disadvantaged) to Quintile 5 (highest young participation rates, considered most advantaged). POLAR4 is based on the participation rates of young people between 2009-10 and 2013-14 if they entered higher education aged 18, or between 2010-11 and 2014-15 if they entered aged 19, therefore is most suitable for applicants aged 19 and under. These groups are assigned using the postcode declared by the applicant at the time of their application. If a UK postcode is invalid, considered unsafe for measurement or there is no link to Census geography possible then the applicant is not assigned to a quintile. Applicants with no POLAR4 quintile are not reported.

#### Sex

Sex as declared by the applicant.

### SIMD 2016 quintile

Scottish index of multiple deprivation (SIMD) identifies small area concentrations of multiple deprivation across all of Scotland, providing a relative measure of deprivation amongst 6505 small areas (data zones) based on 7 socio-economic domains. These small areas are classified into five groups ranked from Quintile 1 (considered the most deprived) to Quintile 5 (considered least deprived), with equal populations in each quintile. Quintiles are assigned using the postcode declared by the applicant, applicants declaring invalid postcodes are classified as 'Not assigned' and are not reported.

SIMD is only defined for applicants domiciled in Scotland, therefore any applicants domiciled outside of Scotland cannot be assigned to an SIMD quintile and so are not reported for this measure.

SIMD is only reported for providers in Scotland. Application and entry rates by SIMD are reported in the 2019 End of Cycle Report and the 2019 cycle January deadline application rate report.

### Statistics reported in the tables

#### All placed applicants

The number of applicants placed for entry into higher education at the provider through one of their choices, including any choices made through Extra, or via Adjustment, Clearing or RPA.

#### All placed applicants per 10,000 population

The number of total UK domiciled 18 year old placed applicants for entry into higher education at the provider divided by the number of UK 18 year olds in the population, multiplied by 10,000. This gives the number of 18 year olds, for every 10,000 in the population, that were placed at the provider through one of their choices, including any choices made through Extra, or via Adjustment, Clearing or RPA. It is an alternative way of expressing the entry rate to a provider. By referencing the underlying population this statistic shows how the number of placed applicants is changing in relation to the available pool of potential applicants and so gives the chance that somebody from the group will be placed at a provider.

This statistic is only reported for 18 year olds.

#### Average offer rate

The offer rate that you might expect if the predicted grades and subject choice of applicants were the only factors that influenced whether an applicant was made an offer by the provider. The average offer rate is calculated by dividing applicants according to their specific combination of grades (for A levels the best three predicted grades are used, for BTECs, International Baccalaureate and Scottish Highers and Advanced Highers, predicted grades along with any grades already achieved upon applying are used) and subject choice. For each combination the number of main scheme offers is divided by the number of main scheme applications, to give an overall offer rate. This is then multiplied by the number of applications made by the group for which the average offer rate is being calculated (for example POLAR4 quintile 1), to give an average number of offers for that group. These average number of offers are then added together across all combinations of predicted grade and subject and divided by the number of main scheme applications from the group to give the average offer rate.

The average offer rate does not attempt to control for any other factors that may play a part in the decision to make an offer, such as the subject of the qualifications studied, their relevance to a course, or the grade in each subject; higher numbers of A levels being studied; the exact profile of grades predicted; personal statements; teacher references; interviews; or any other criteria (such as work experience or portfolios) that may be part of the admissions decision.

This statistic is only reported for 18 year olds.



### Contribution of group to the average offer rate

The way in which the average offer rate is defined means that the pattern of application and offers of a group (for example POLAR4 quintile 1) will always contribute, in part, to the average offer rate for that group. When this contribution is large, the average offer rate will mainly reflect the patterns for the group, meaning that the value of the average offer rate will be similar to the offer rate, the percentage point difference statistic will be small, and any real difference between the offer rate and what might be expected given the predicted grades and subject choices of the applicants will be difficult to detect.

Values of the contribution of group to the average offer rate range between 0 and 1. The closer the value is to 1 the greater the contribution a group makes to its own average offer rate.

This statistic is only reported for 18 year olds.

### Placed June deadline applicants

An applicant who has been placed for entry into higher education at the provider through a June deadline application.

### Placed June deadline applicants per 10,000 population

The number of UK domiciled 18 year old placed June deadline applicants at the provider divided by the number of UK 18 year olds in the population, multiplied by 10,000. This gives the number of 18 year olds, for every 10,000 in the population, that were placed at the provider through one of their June deadline applications. It is an alternative way of expressing the entry rate to a provider, but for placed June deadline applicants only. By referencing the underlying population this statistic shows how the number of placed June deadline applicants is changing in relation to the available pool of potential 18 year old applicants and so gives the chance that somebody from the group will be placed at a provider through a June deadline application.

This statistic is only reported for 18 year olds.

### June deadline applications

An application (or choice) to a course in higher education to the provider that is made by the June 30 deadline. Each applicant can make up to five choices this way. The number of June deadline applications does not include choices made through the following routes: Clearing, Extra, Adjustment and RPAs. Applications made to October deadline courses received after the October deadline are not included in these statistics.

### June deadline applicants

The number of applicants that made at least one application to the provider by the June 30 deadline.

### June deadline applicants per 10,000 population

The number of UK domiciled 18 year old June deadline applicants to the provider divided by the number of UK 18 year olds in the population, multiplied by 10,000. This gives the number of 18 year olds, for every 10,000 in the population, who applied by the June 30 deadline. It is equivalent to the application rate. By referencing the underlying population this statistic shows how the number of June deadline applicants is changing in relation to the available pool of potential 18 year old applicants and so gives the chance that somebody from the group will apply to a provider by the June 30 deadline.

This statistic is only reported for 18 year olds.

### Offers

An offer is defined as a provider's decision in response to an application to offer a place to an applicant, often subject to the applicant satisfying academic and/or other criteria, via a June deadline application (i.e. does not cover choices made through the following routes: Clearing, Extra, Adjustment and RPAs).

### Offer rate

The number of offers made divided by the number of June deadline applications. This gives the proportion of all June deadline applications to the provider that received an offer.

### Percentage point difference between offer rate and average offer rate

The offer rate minus the average offer rate.

The percentage point difference can be compared to the expected range of statistical variation resulting from the calculation of the average offer rate using the Average Offer Rate Lookup Table. Where the value of the percentage point difference lies outside of this range, the percentage point difference may be considered to represent a real difference between the offer rate and the average offer rate.

### Other definitions

#### Age

This analysis uses country-specific age definitions that align with the cut off points for school and college cohorts within the different administrations of the UK. For England and Wales, ages are defined on the 31 August, for Northern Ireland on the 1 July and for Scotland on the 28 February the following year. Defining ages in this way matches the assignment of children to school cohorts. For applicants outside of the UK a cohort cut off of 31 August has been used. Numbers for applicants aged 17 and under are included in the tables that report numbers for all age groups. Providers in Scotland typically receive a higher proportion of applicants aged 17 and under compared to providers elsewhere in the UK.

#### Provider

A higher education provider - a university or college.

#### UK domiciled

Declared area of permanent residence within England, Northern Ireland, Scotland and Wales. Applicants from the Channel Islands and Isle of Man are not included.