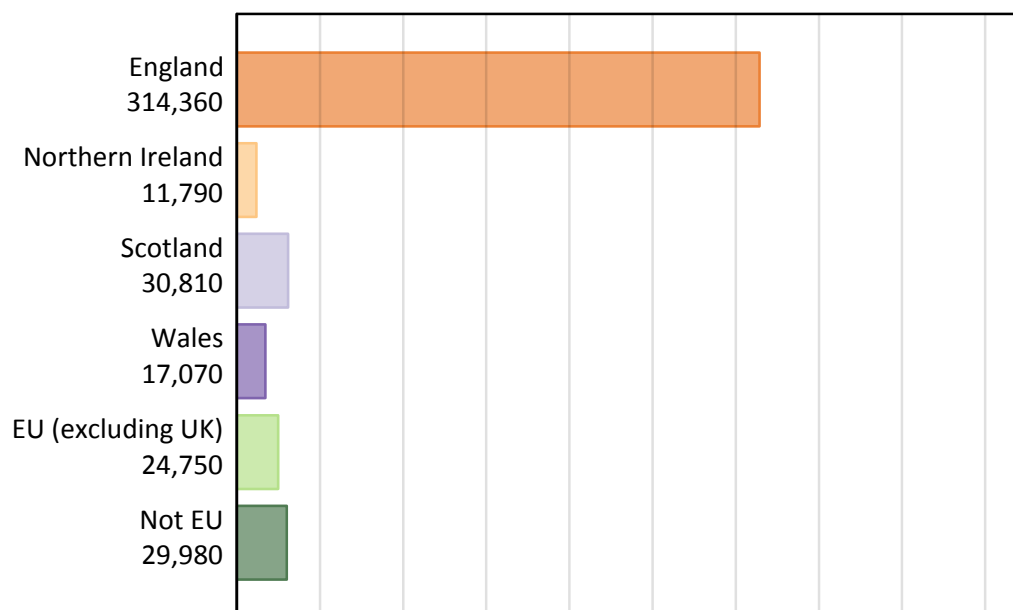


Analysis at 00:05 on Friday 14 August 2015 (1 day after A level results day)

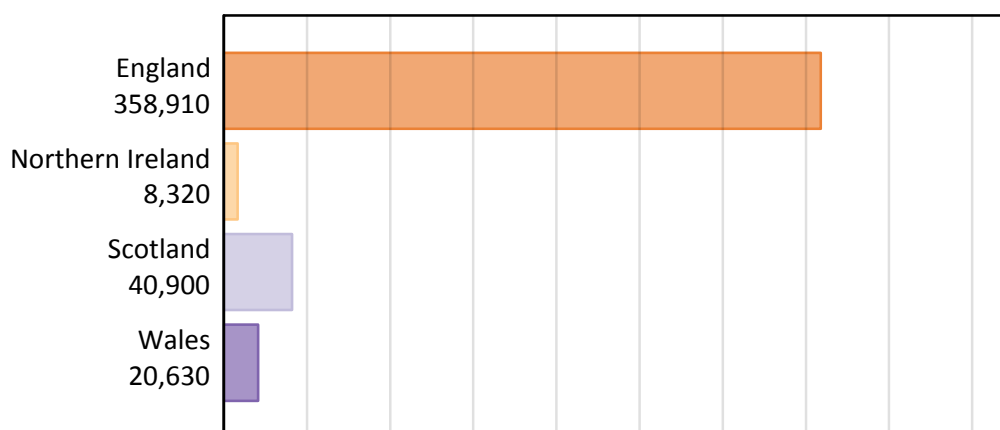
B.1 Placed applicants by country of provider and domicile, 2015 cycle

Domicile of applicant	Country of provider				
	England	Northern Ireland	Scotland	Wales	UK
England	300,750	500	4,180	8,930	314,360
Northern Ireland	3,380	7,320	950	130	11,790
Scotland	1,430	20	29,320	40	30,810
Wales	7,440	10	100	9,510	17,070
EU (excluding UK)	19,380	340	3,970	1,060	24,750
Not EU	26,520	130	2,380	950	29,980
All	358,910	8,320	40,900	20,630	428,760

B.2 Placed applicants by domicile group

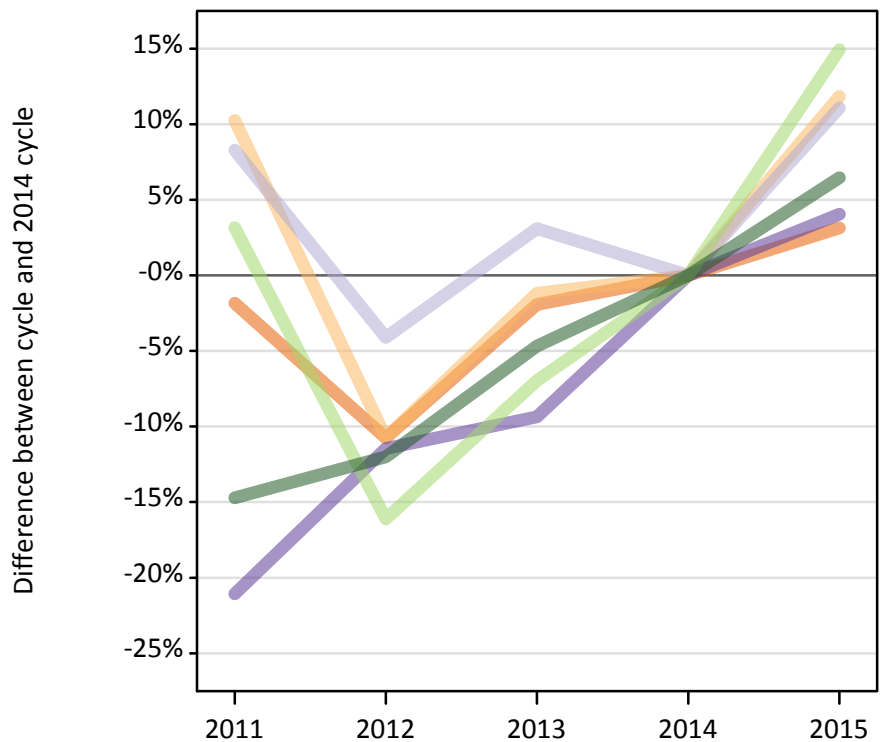


B.3 Placed applicants by country of provider



B.4 Placed applicants at 1 day after A level results day: providers in England

Selected applicant domiciles: difference between cycle and 2014 cycle (at 1 day after A level results day)



B.5 Placed applicants at 1 day after A level results day: providers in England

Placed applicants by domicile (at 1 day after A level results day)

Domicile of applicant	2011	2012	2013	2014	2015
England	286,240	260,210	285,960	291,580	300,750
Northern Ireland	3,330	2,700	2,990	3,020	3,380
Scotland	1,400	1,240	1,330	1,290	1,430
Wales	5,650	6,340	6,480	7,150	7,440
EU (excluding UK)	17,400	14,150	15,690	16,870	19,380
Not EU	21,240	21,920	23,740	24,910	26,520

B.6 Placed applicants at 1 day after A level results day: providers in England

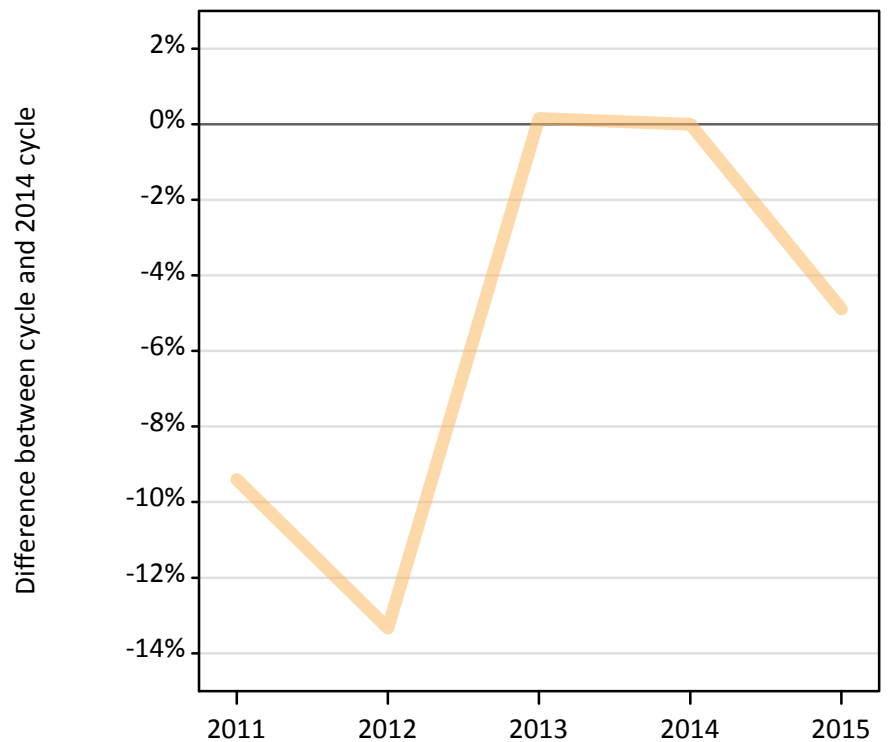
Selected applicant domiciles: difference between cycle and 2014 cycle (at 1 day after A level results day)

Domicile of applicant	2011	2012	2013	2014	2015
England	-2%	-11%	-2%	0%	3%
Northern Ireland	10%	-11%	-1%	0%	12%
Scotland	8%	-4%	3%	0%	11%
Wales	-21%	-11%	-9%	0%	4%
EU (excluding UK)	3%	-16%	-7%	0%	15%
Not EU	-15%	-12%	-5%	0%	6%

B.7 Placed applicants at 1 day after A level results day: providers in Northern Ireland

Selected applicant domiciles: difference between cycle and 2014 cycle (at 1 day after A level results day)

— Northern Ireland



B.8 Placed applicants at 1 day after A level results day: providers in Northern Ireland

Placed applicants by domicile (at 1 day after A level results day)

Domicile of applicant	2011	2012	2013	2014	2015
England	200	180	210	290	500
Northern Ireland	6,970	6,670	7,710	7,700	7,320
Scotland	20	20	10	20	20
Wales	10	0	0	10	10
EU (excluding UK)	380	360	400	410	340
Not EU	100	140	160	160	130

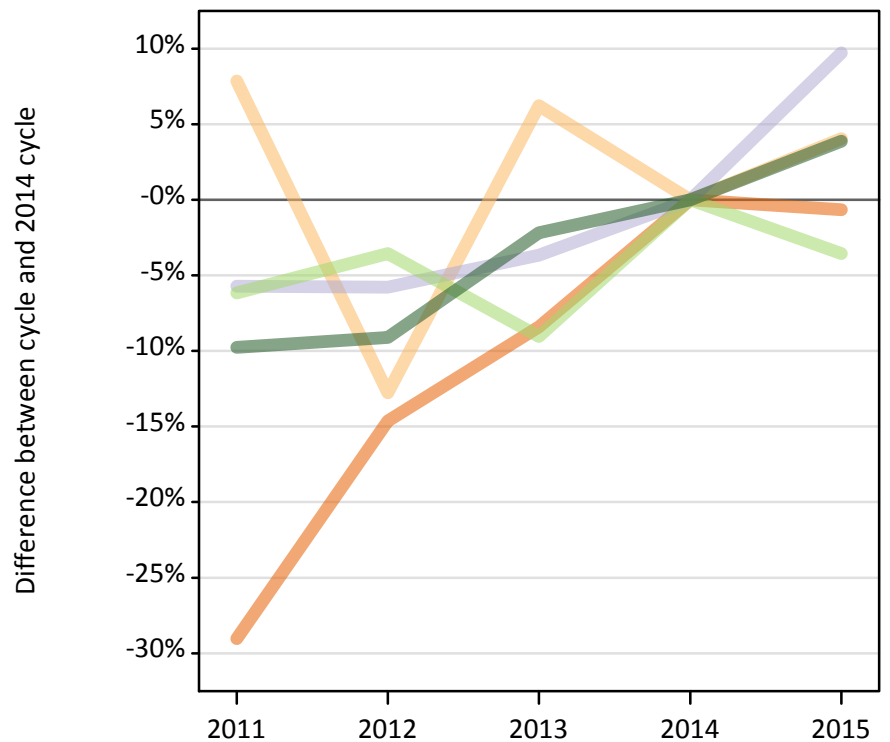
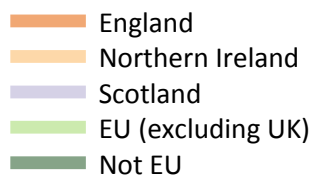
B.9 Placed applicants at 1 day after A level results day: providers in Northern Ireland

Selected applicant domiciles: difference between cycle and 2014 cycle (at 1 day after A level results day)

Domicile of applicant	2011	2012	2013	2014	2015
Northern Ireland	-9%	-13%	0%	0%	-5%

B.10 Placed applicants at 1 day after A level results day: providers in Scotland

Selected applicant domiciles: difference between cycle and 2014 cycle (at 1 day after A level results day)



B.11 Placed applicants at 1 day after A level results day: providers in Scotland

Placed applicants by domicile (at 1 day after A level results day)

Domicile of applicant	2011	2012	2013	2014	2015
England	2,990	3,600	3,860	4,210	4,180
Northern Ireland	990	800	970	920	950
Scotland	25,200	25,180	25,750	26,730	29,320
Wales	80	100	100	100	100
EU (excluding UK)	3,860	3,970	3,740	4,110	3,970
Not EU	2,070	2,080	2,240	2,290	2,380

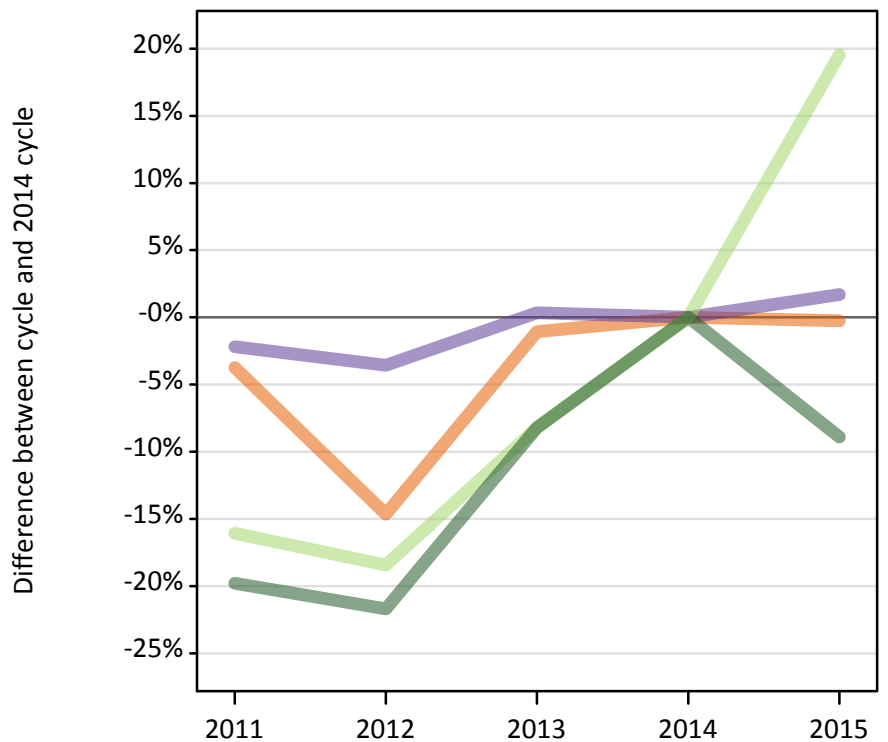
B.12 Placed applicants at 1 day after A level results day: providers in Scotland

Selected applicant domiciles: difference between cycle and 2014 cycle (at 1 day after A level results day)

Domicile of applicant	2011	2012	2013	2014	2015
England	-29%	-15%	-8%	0%	-1%
Northern Ireland	8%	-13%	6%	0%	4%
Scotland	-6%	-6%	-4%	0%	10%
EU (excluding UK)	-6%	-4%	-9%	0%	-4%
Not EU	-10%	-9%	-2%	0%	4%

B.13 Placed applicants at 1 day after A level results day: providers in Wales

Selected applicant domiciles: difference between cycle and 2014 cycle (at 1 day after A level results day)



B.14 Placed applicants at 1 day after A level results day: providers in Wales

Placed applicants by domicile (at 1 day after A level results day)

Domicile of applicant	2011	2012	2013	2014	2015
England	8,610	7,640	8,850	8,950	8,930
Northern Ireland	160	120	140	130	130
Scotland	50	40	60	50	40
Wales	9,150	9,020	9,390	9,360	9,510
EU (excluding UK)	750	730	820	890	1,060
Not EU	840	820	960	1,050	950

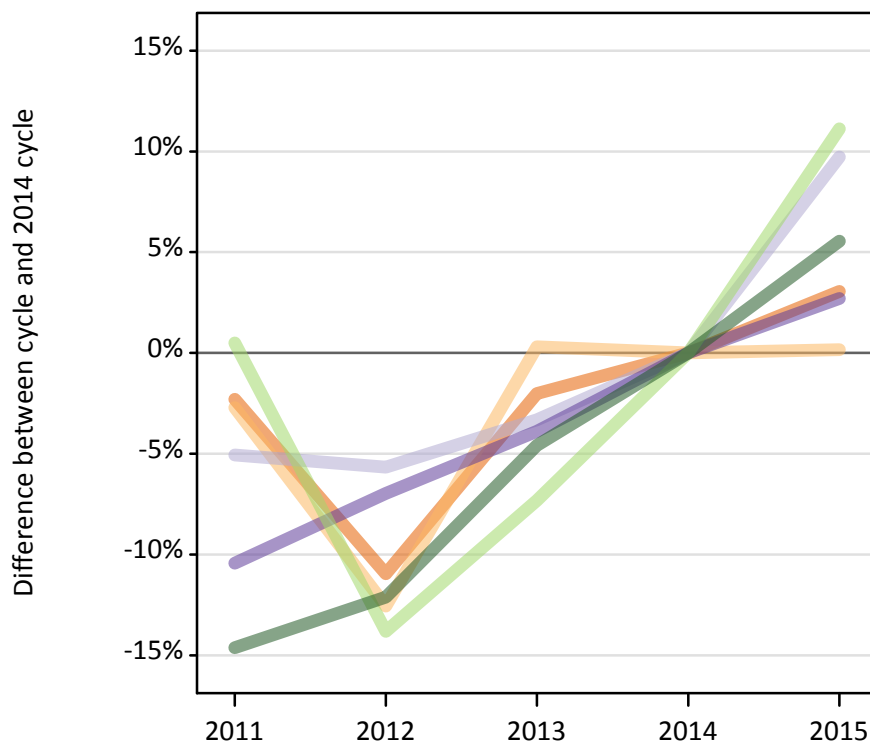
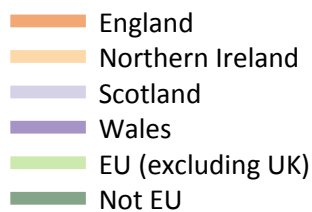
B.15 Placed applicants at 1 day after A level results day: providers in Wales

Selected applicant domiciles: difference between cycle and 2014 cycle (at 1 day after A level results day)

Domicile of applicant	2011	2012	2013	2014	2015
England	-4%	-15%	-1%	0%	-0%
Wales	-2%	-4%	0%	0%	2%
EU (excluding UK)	-16%	-18%	-8%	0%	20%
Not EU	-20%	-22%	-8%	0%	-9%

B.16 Placed applicants at 1 day after A level results day: providers in the UK

Selected applicant domiciles: difference between cycle and 2014 cycle (at 1 day after A level results day)



B.17 Placed applicants at 1 day after A level results day: providers in the UK

Placed applicants by domicile (at 1 day after A level results day)

Domicile of applicant	2011	2012	2013	2014	2015
England	298,040	271,620	298,880	305,030	314,360
Northern Ireland	11,450	10,290	11,800	11,770	11,790
Scotland	26,660	26,490	27,150	28,080	30,810
Wales	14,880	15,460	15,970	16,620	17,070
EU (excluding UK)	22,390	19,200	20,650	22,280	24,750
Not EU	24,250	24,960	27,100	28,410	29,980

B.18 Placed applicants at 1 day after A level results day: providers in the UK

Selected applicant domiciles: difference between cycle and 2014 cycle (at 1 day after A level results day)

Domicile of applicant	2011	2012	2013	2014	2015
England	-2%	-11%	-2%	0%	3%
Northern Ireland	-3%	-13%	0%	0%	0%
Scotland	-5%	-6%	-3%	0%	10%
Wales	-10%	-7%	-4%	0%	3%
EU (excluding UK)	0%	-14%	-7%	0%	11%
Not EU	-15%	-12%	-5%	0%	6%