

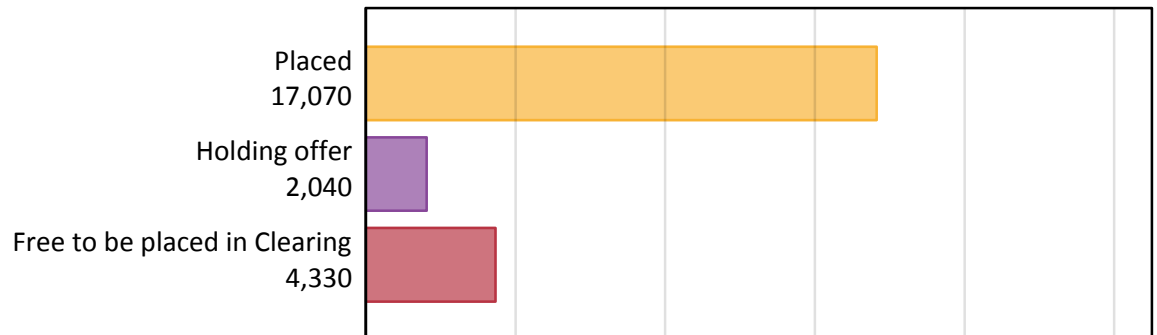
Daily Clearing Analysis: Overview

Analysis at 00:05 on Friday 14 August 2015 (1 day after A level results day - No Scot.X1)

AX.1 Applicants by type and status from Wales, 2015 cycle

Applicant type	Status	2015
Main scheme	Placed (Clearing)	220
	Placed (Adjustment)	10
	Placed (Firm)	15,250
	Placed (Insurance)	1,040
	Placed (Other)	440
	Holding offer	2,040
	Free to be placed in Clearing	4,330
Direct to Clearing	Placed (Direct to Clearing)	100
	Other (Direct to Clearing)	310
All applicants	Placed	17,070

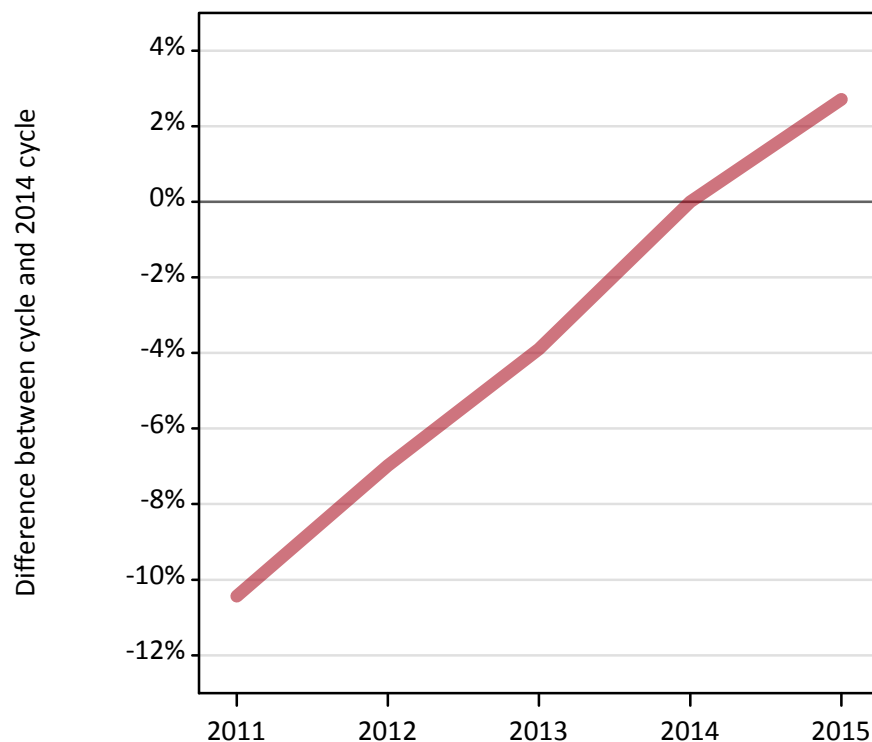
AX.2 Summary of applicants who are placed, holding offers or free to be placed in Clearing (Wales)



AX.3 All placed applicants from Wales: 1 day after A level results day

All placed applicants: difference between cycle and 2014 cycle

Placed



AX.4 All placed applicants from Wales: 1 day after A level results day

All placed applicants: applicants at 1 day after A level results day

Applicant type	Status	2011	2012	2013	2014	2015
All applicants	Placed	14,880	15,460	15,970	16,620	17,070

AX.5 All placed applicants from Wales: 1 day after A level results day

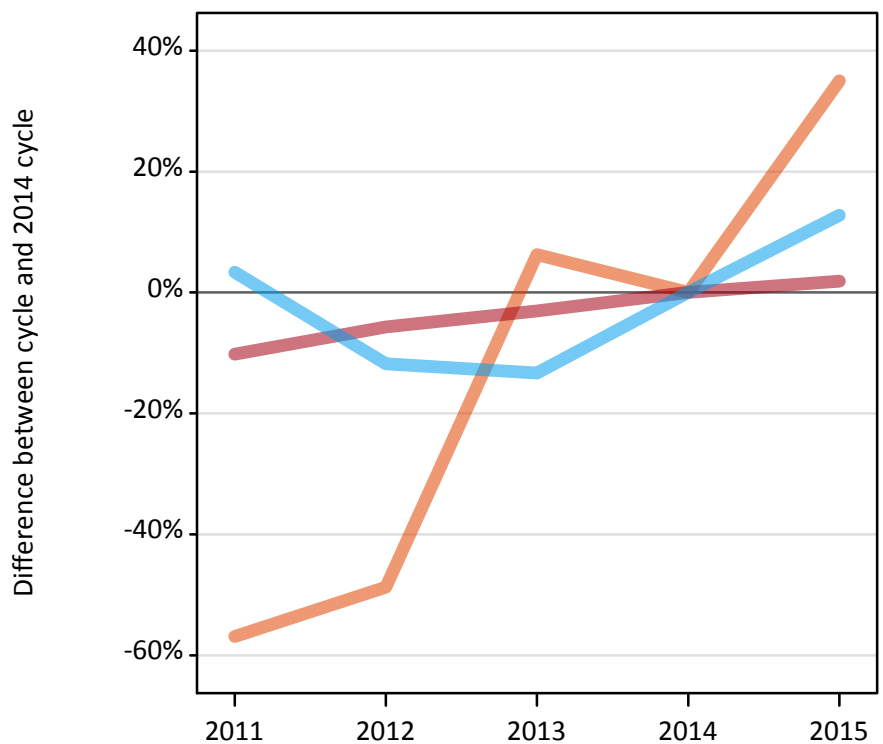
All placed applicants: difference between cycle and 2014 cycle

Applicant type	Status	2011	2012	2013	2014	2015
All applicants	Placed	-10%	-7%	-4%	0%	3%

AX.6 Placed main scheme applicants from Wales: 1 day after A level results day

Selected placed routes: difference between cycle and 2014 cycle

- Placed (Clearing)
- Placed (Firm)
- Placed (Insurance)



AX.7 Placed main scheme applicants from Wales: 1 day after A level results day

All Main scheme placed routes (excluding Adjustment): applicants at 1 day after A level results day

Applicant type	Status	2011	2012	2013	2014	2015
Main scheme	Placed (Clearing)	70	80	170	160	220
	Placed (Firm)	13,450	14,130	14,520	14,980	15,250
	Placed (Insurance)	960	820	800	930	1,040
	Placed (Other)	350	350	370	450	440

AX.8 Placed main scheme applicants from Wales: 1 day after A level results day

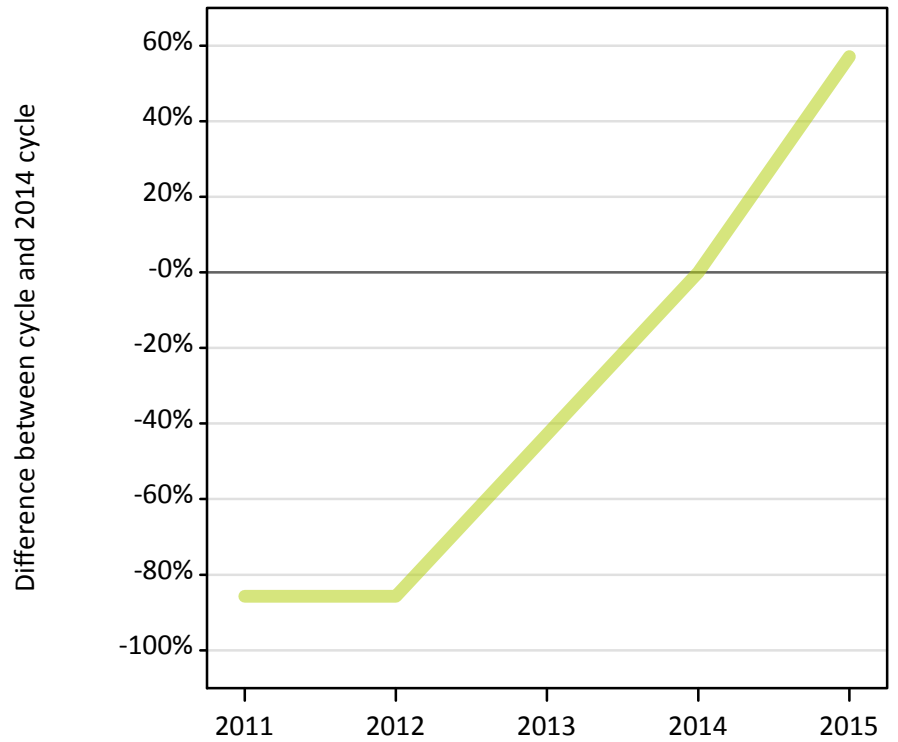
Selected placed routes: difference between cycle and 2014 cycle

Applicant type	Status	2011	2012	2013	2014	2015
Main scheme	Placed (Clearing)	-57%	-49%	6%	0%	35%
	Placed (Firm)	-10%	-6%	-3%	0%	2%
	Placed (Insurance)	3%	-12%	-13%	0%	13%

AX.9 Main scheme applicants placed through adjustment: 1 day after A level results day

Placed through adjustment: difference between cycle and 2014 cycle

Placed (Adjustment)



AX.10 Main scheme applicants placed through adjustment: 1 day after A level results day

Placed through adjustment: applicants at 1 day after A level results day

Applicant type	Status	2011	2012	2013	2014	2015
Main scheme	Placed (Adjustment)	0	0	0	10	10

AX.11 Main scheme applicants placed through adjustment: 1 day after A level results day

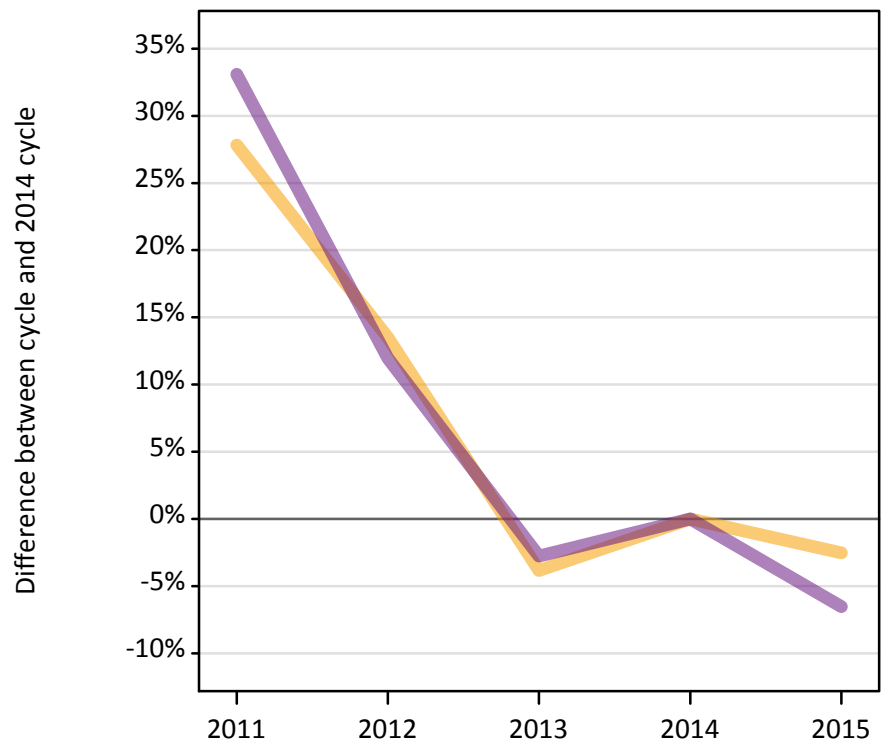
Placed through adjustment: difference between cycle and 2014 cycle

Applicant type	Status	2011	2012	2013	2014	2015
Main scheme	Placed (Adjustment)	-86%	-86%	-43%	0%	57%

AX.12 Main scheme applicants not currently placed from Wales: 1 day after A level results day

Applicants in unplaced states: difference between cycle and 2014 cycle

— Holding offer
— Free to be placed in Clearing



AX.13 Main scheme applicants not currently placed from Wales: 1 day after A level results day

Applicants in unplaced states: applicants at 1 day after A level results day

Applicant type	Status	2011	2012	2013	2014	2015
Main scheme	Holding offer	2,670	2,370	2,010	2,090	2,040
	Free to be placed in Clearing	6,170	5,190	4,510	4,640	4,330

AX.14 Main scheme applicants not currently placed from Wales: 1 day after A level results day

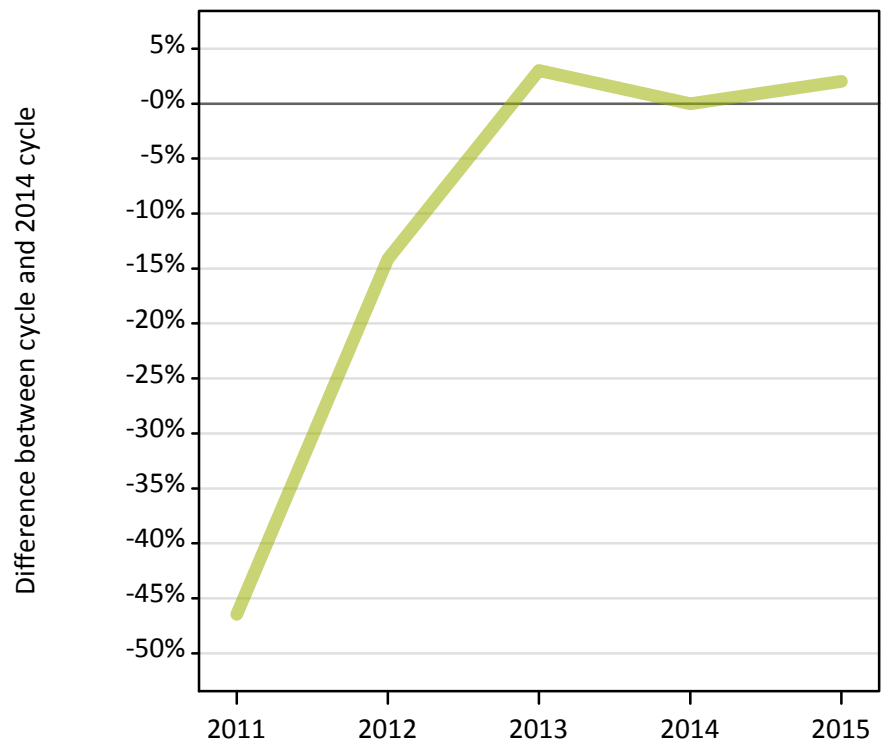
Applicants in unplaced states: difference between cycle and 2014 cycle

Applicant type	Status	2011	2012	2013	2014	2015
Main scheme	Holding offer	28%	14%	-4%	0%	-3%
	Free to be placed in Clearing	33%	12%	-3%	0%	-7%

AX.15 Direct to Clearing applicants from Wales: 1 day after A level results day

Placed (Direct to Clearing): difference between cycle and 2014 cycle

Placed (Direct to Clearing)

**AX.16 Direct to Clearing applicants from Wales: 1 day after A level results day**

Direct to Clearing 1 day after A level results day

Applicant type	Status	2011	2012	2013	2014	2015
Direct to Clearing	Placed (Direct to Clearing)	50	90	100	100	100
	Other (Direct to Clearing)	260	270	280	300	310

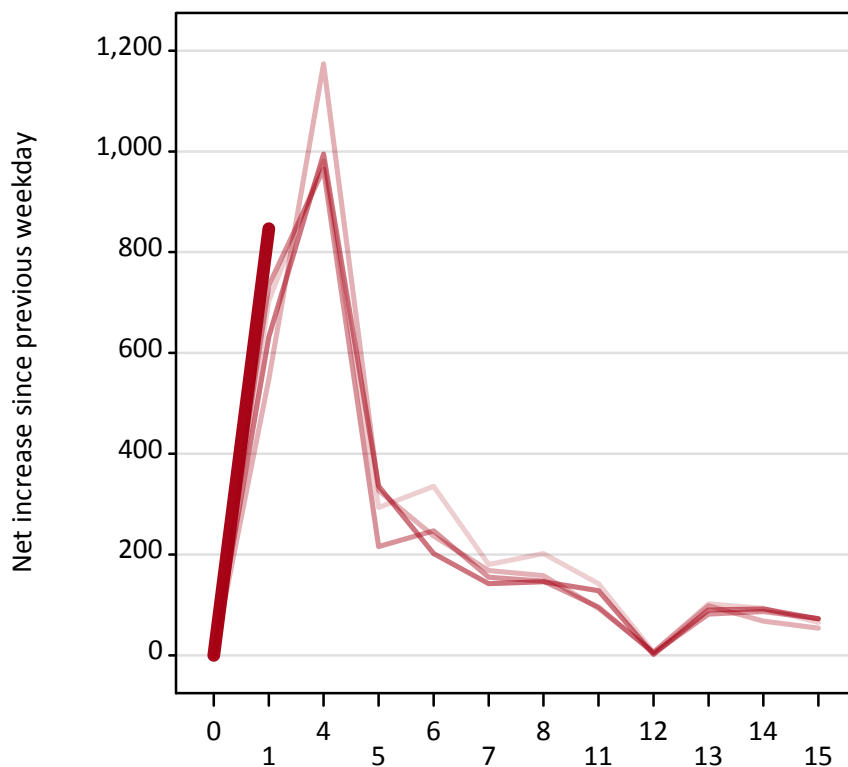
AX.17 Direct to Clearing applicants from Wales: 1 day after A level results day

Placed (Direct to Clearing): difference between cycle and 2014 cycle

Applicant type	Status	2011	2012	2013	2014	2015
Direct to Clearing	Placed (Direct to Clearing)	-46%	-14%	3%	0%	2%

AX.18 All Placed: Daily net change (from Wales)

Net increase since previous weekday (2015 cycle up to 1 day after A level results day)



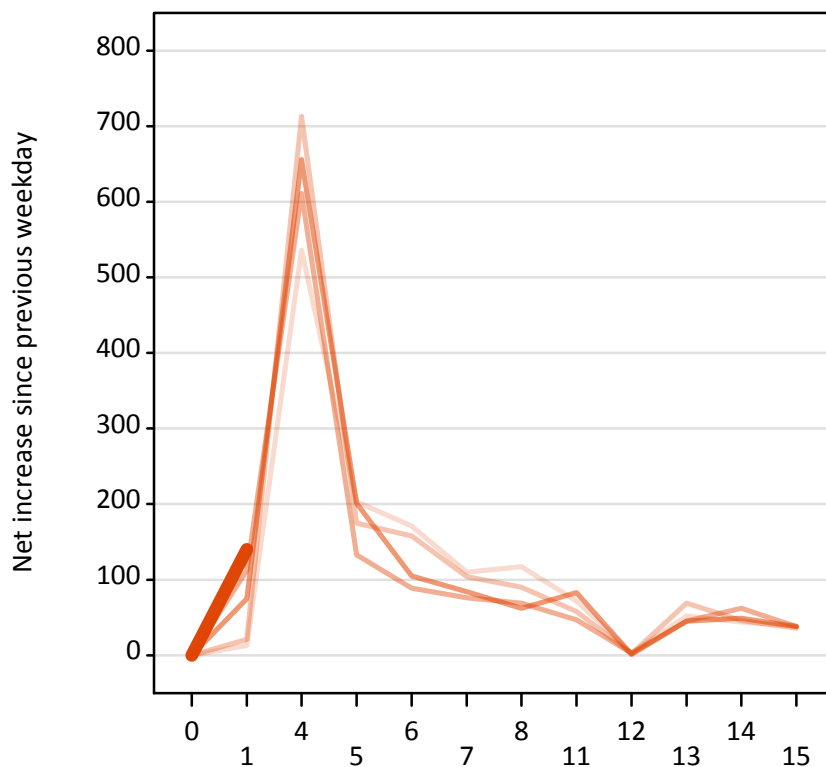
AX.19 All Placed: Daily net change (from Wales)

Net increase since previous weekday (2015 cycle up to 1 day after A level results day)

Applicant status, days since A level results day		2011	2012	2013	2014	2015
All Placed	0	0	0	0	0	0
	1	700	550	730	630	850
	4	980	1,170	970	1,000	
	5	290	330	220	340	
	6	340	240	250	200	
	7	180	170	160	140	
	8	200	160	150	150	
	11	140	90	100	130	
	12	10	10	0	0	
	13	100	100	80	90	
	14	90	70	90	90	
	15	70	50	70	70	

AX.20 Placed through Clearing only: Daily net change (from Wales)

Net increase since previous weekday (2015 cycle up to 1 day after A level results day)



AX.21 Placed through Clearing only: Daily net change (from Wales)

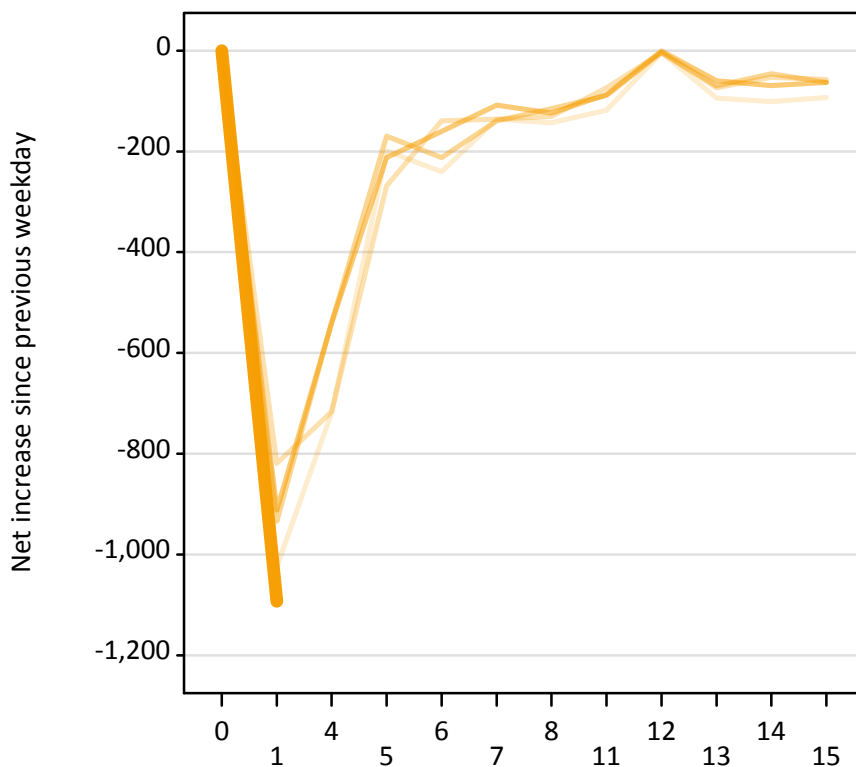
Net increase since previous weekday (2015 cycle up to 1 day after A level results day)

Applicant status, days since A level results day		2011	2012	2013	2014	2015
Placed through Clearing only	0	0	0	0	0	0
	1	10	20	110	80	140
	4	540	710	610	660	
	5	200	180	130	200	
	6	170	160	90	110	
	7	110	100	80	80	
	8	120	90	70	60	
	11	70	60	50	80	
	12	0	0	0	0	
	13	50	70	50	50	
	14	40	50	60	50	
	15	40	40	40	40	

AX.22 Holding Offer: Daily net change (from Wales)

Net increase since previous weekday (2015 cycle up to 1 day after A level results day)

- 2011
- 2012
- 2013
- 2014
- 2015



AX.23 Holding Offer: Daily net change (from Wales)

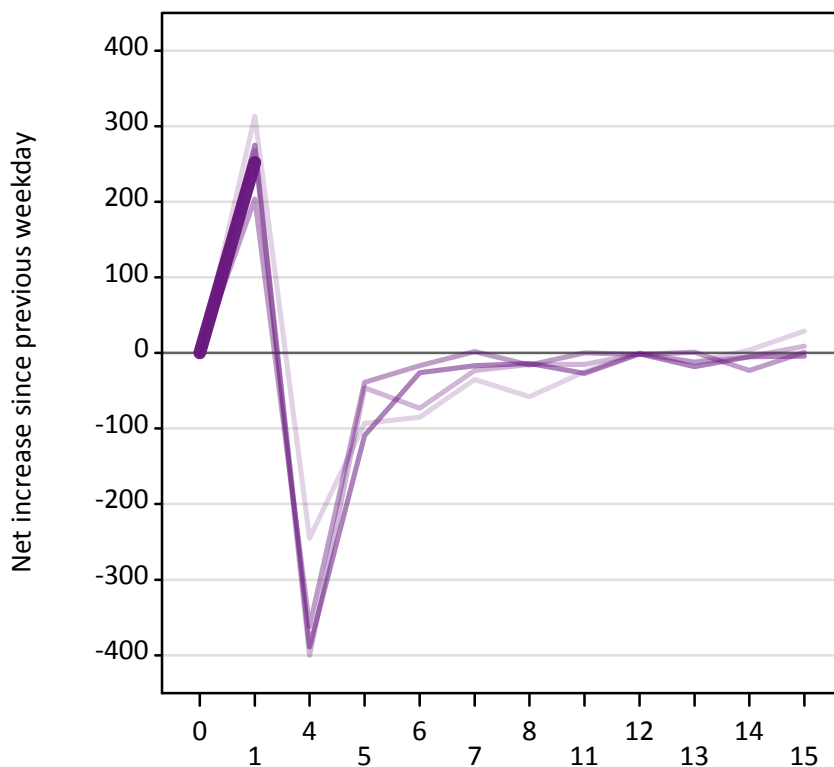
Net increase since previous weekday (2015 cycle up to 1 day after A level results day)

Applicant status, days since A level results day		2011	2012	2013	2014	2015
Holding Offer	0	0	0	0	0	0
	1	-1,020	-820	-930	-910	-1,090
	4	-720	-720	-540	-540	
	5	-200	-270	-170	-210	
	6	-240	-140	-210	-160	
	7	-140	-140	-140	-110	
	8	-140	-130	-120	-120	
	11	-120	-70	-90	-90	
	12	0	0	0	0	
	13	-90	-70	-70	-60	
	14	-100	-50	-50	-70	
	15	-90	-60	-60	-60	

AX.24 Free to be placed in Clearing: Daily net change (from Wales)

Net increase since previous weekday (2015 cycle up to 1 day after A level results day)

- 2011
- 2012
- 2013
- 2014
- 2015



AX.25 Free to be placed in Clearing: Daily net change (from Wales)

Net increase since previous weekday (2015 cycle up to 1 day after A level results day)

Applicant status, days since A level results day		2011	2012	2013	2014	2015
Free to be placed in Clearing	0	0	0	0	0	0
	1	310	270	200	280	250
	4	-250	-400	-360	-390	
	5	-90	-50	-40	-110	
	6	-90	-70	-20	-30	
	7	-40	-20	0	-20	
	8	-60	-20	-20	-10	
	11	-30	-20	0	-30	
	12	0	0	0	0	
	13	-10	-10	0	-20	
	14	0	-10	-20	-10	
	15	30	10	0	0	