

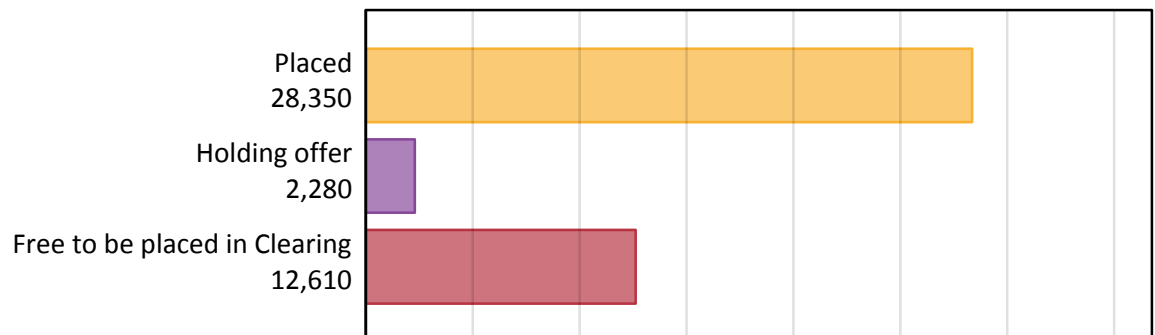
# Daily Clearing Analysis: Overview

Analysis at 00:05 on Friday 14 August 2015 (1 day after A level results day - No Scot.X1)

## AX.1 Applicants by type and status from Scotland, 2015 cycle

Applicant type	Status	2015
Main scheme	Placed (Clearing)	550
	Placed (Adjustment)	0
	Placed (Firm)	25,770
	Placed (Insurance)	1,470
	Placed (Other)	480
	Holding offer	2,280
	Free to be placed in Clearing	12,610
Direct to Clearing	Placed (Direct to Clearing)	80
	Other (Direct to Clearing)	340
All applicants	Placed	28,350

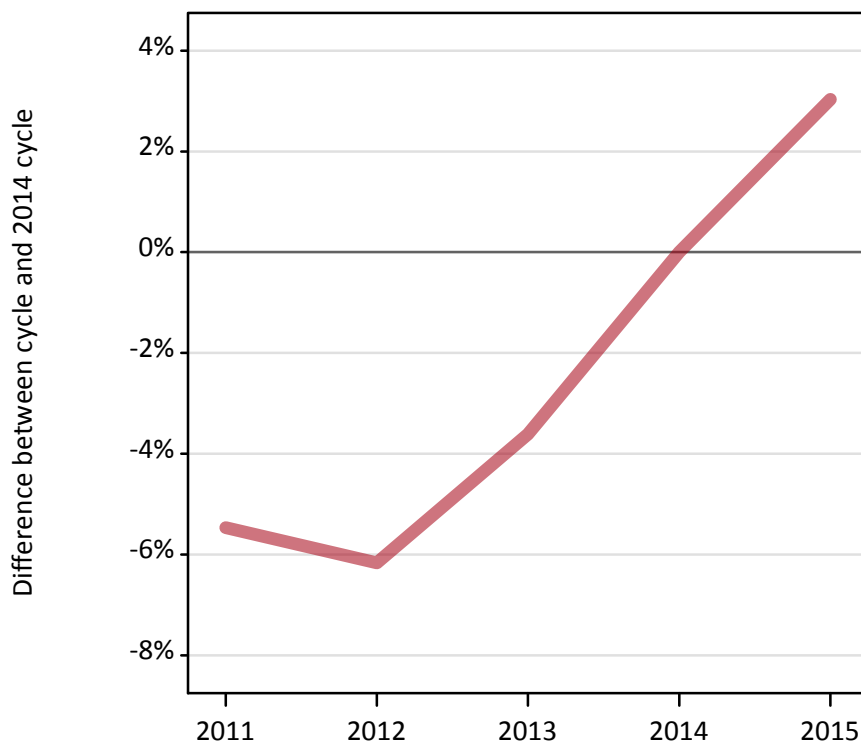
## AX.2 Summary of applicants who are placed, holding offers or free to be placed in Clearing ( Scotland )



### AX.3 All placed applicants from Scotland: 1 day after A level results day

All placed applicants: difference between cycle and 2014 cycle

Placed



### AX.4 All placed applicants from Scotland: 1 day after A level results day

All placed applicants: applicants at 1 day after A level results day

Applicant type	Status	2011	2012	2013	2014	2015
All applicants	Placed	26,010	25,820	26,520	27,510	28,350

### AX.5 All placed applicants from Scotland: 1 day after A level results day

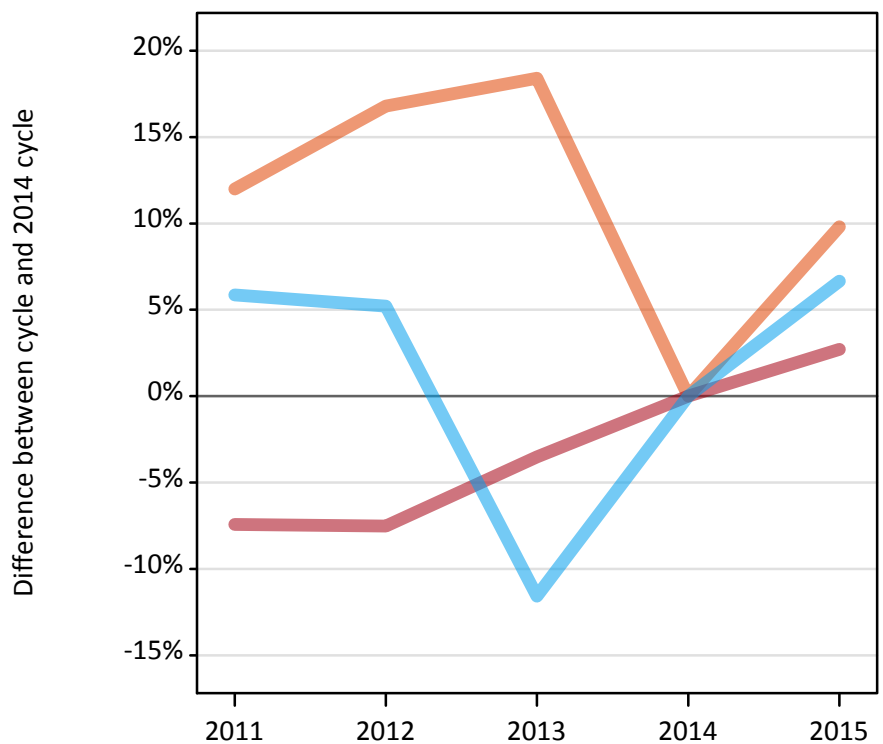
All placed applicants: difference between cycle and 2014 cycle

Applicant type	Status	2011	2012	2013	2014	2015
All applicants	Placed	-5%	-6%	-4%	0%	3%

### AX.6 Placed main scheme applicants from Scotland: 1 day after A level results day

Selected placed routes: difference between cycle and 2014 cycle

- Placed (Clearing)
- Placed (Firm)
- Placed (Insurance)



### AX.7 Placed main scheme applicants from Scotland: 1 day after A level results day

All Main scheme placed routes (excluding Adjustment): applicants at 1 day after A level results day

Applicant type	Status	2011	2012	2013	2014	2015
Main scheme	Placed (Clearing)	560	580	590	500	550
	Placed (Firm)	23,230	23,210	24,210	25,090	25,770
	Placed (Insurance)	1,460	1,450	1,220	1,380	1,470
	Placed (Other)	710	520	440	470	480

### AX.8 Placed main scheme applicants from Scotland: 1 day after A level results day

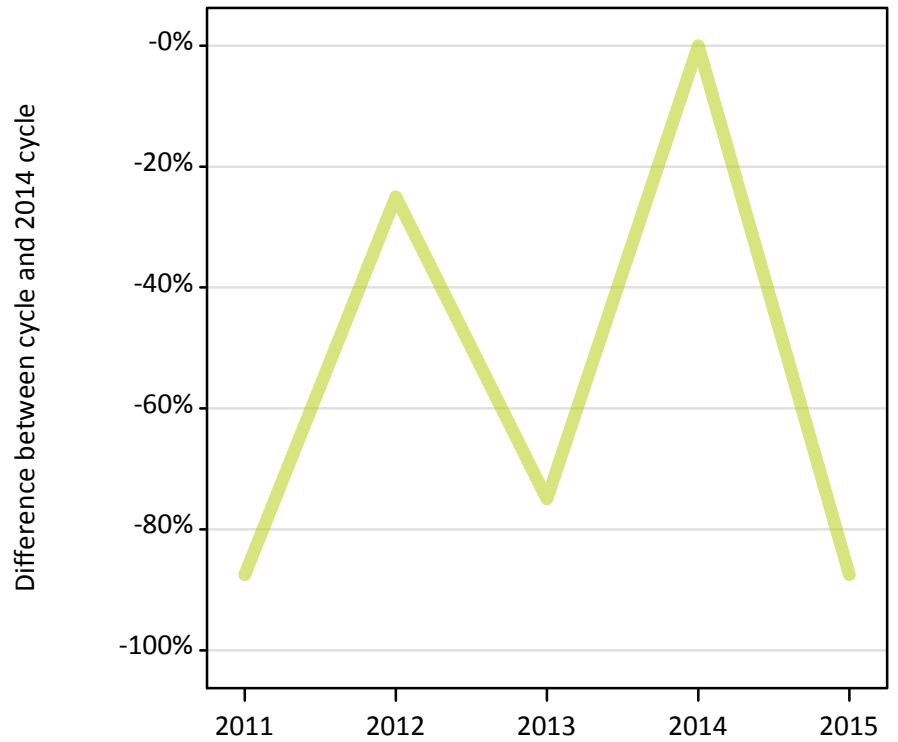
Selected placed routes: difference between cycle and 2014 cycle

Applicant type	Status	2011	2012	2013	2014	2015
Main scheme	Placed (Clearing)	12%	17%	18%	0%	10%
	Placed (Firm)	-7%	-8%	-4%	0%	3%
	Placed (Insurance)	6%	5%	-12%	0%	7%

### AX.9 Main scheme applicants placed through adjustment: 1 day after A level results day

Placed through adjustment: difference between cycle and 2014 cycle

Placed (Adjustment)



### AX.10 Main scheme applicants placed through adjustment: 1 day after A level results day

Placed through adjustment: applicants at 1 day after A level results day

Applicant type	Status	2011	2012	2013	2014	2015
Main scheme	Placed (Adjustment)	0	10	0	10	0

### AX.11 Main scheme applicants placed through adjustment: 1 day after A level results day

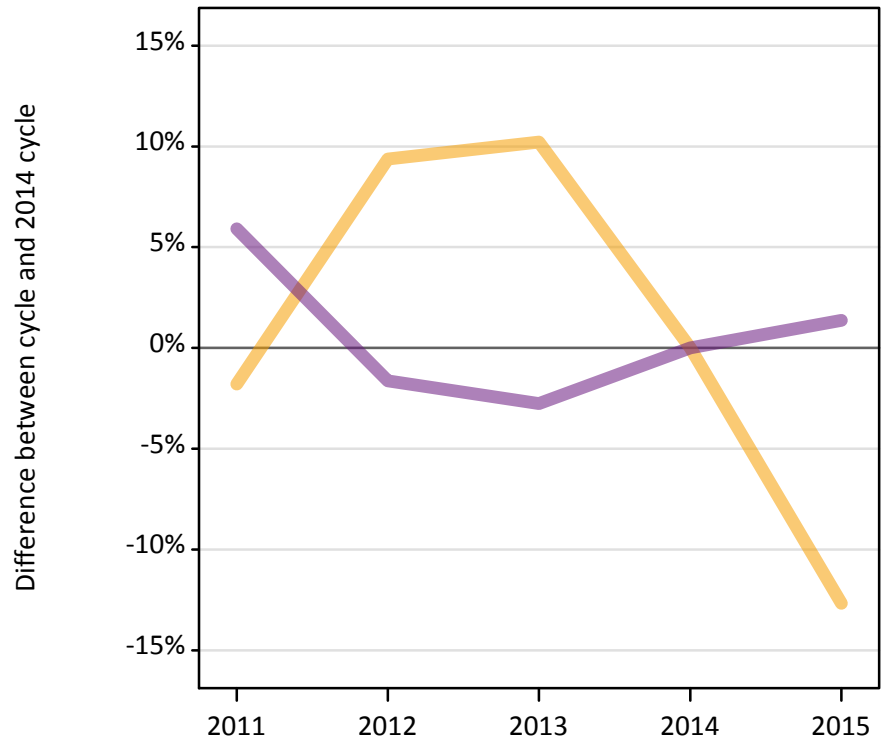
Placed through adjustment: difference between cycle and 2014 cycle

Applicant type	Status	2011	2012	2013	2014	2015
Main scheme	Placed (Adjustment)	-88%	-25%	-75%	0%	-88%

### AX.12 Main scheme applicants not currently placed from Scotland: 1 day after A level results day

Applicants in unplaced states: difference between cycle and 2014 cycle

— Holding offer  
— Free to be placed in Clearing



### AX.13 Main scheme applicants not currently placed from Scotland: 1 day after A level results day

Applicants in unplaced states: applicants at 1 day after A level results day

Applicant type	Status	2011	2012	2013	2014	2015
Main scheme	Holding offer	2,570	2,860	2,880	2,610	2,280
	Free to be placed in Clearing	13,180	12,240	12,100	12,440	12,610

### AX.14 Main scheme applicants not currently placed from Scotland: 1 day after A level results day

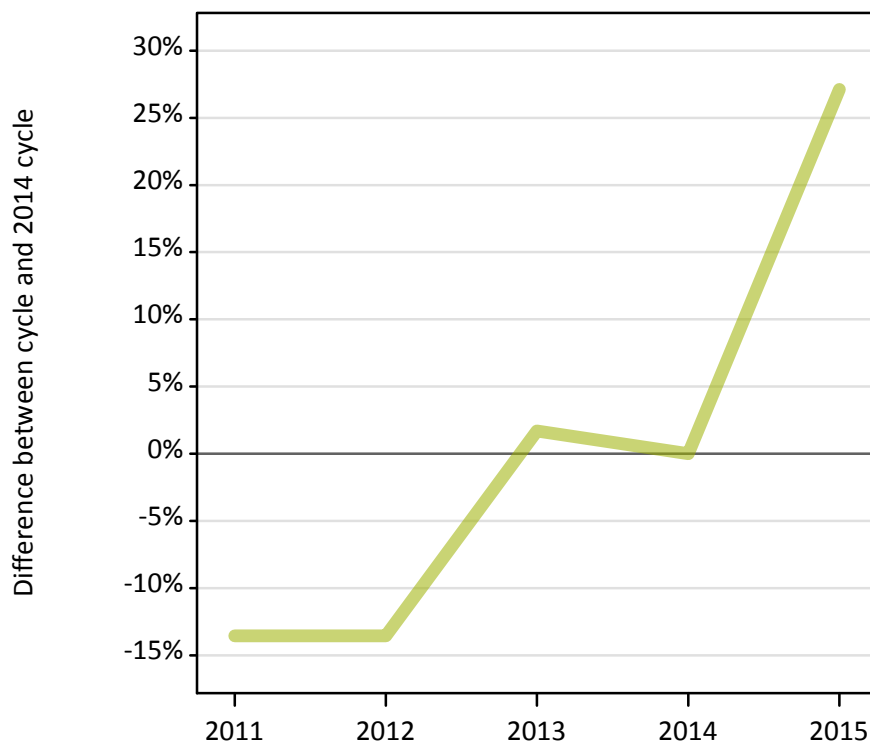
Applicants in unplaced states: difference between cycle and 2014 cycle

Applicant type	Status	2011	2012	2013	2014	2015
Main scheme	Holding offer	-2%	9%	10%	0%	-13%
	Free to be placed in Clearing	6%	-2%	-3%	0%	1%

**AX.15 Direct to Clearing applicants from Scotland: 1 day after A level results day**

Placed (Direct to Clearing): difference between cycle and 2014 cycle

Placed (Direct to Clearing)

**AX.16 Direct to Clearing applicants from Scotland: 1 day after A level results day**

Direct to Clearing 1 day after A level results day

Applicant type	Status	2011	2012	2013	2014	2015
Direct to Clearing	Placed (Direct to Clearing)	50	50	60	60	80
	Other (Direct to Clearing)	270	300	280	240	340

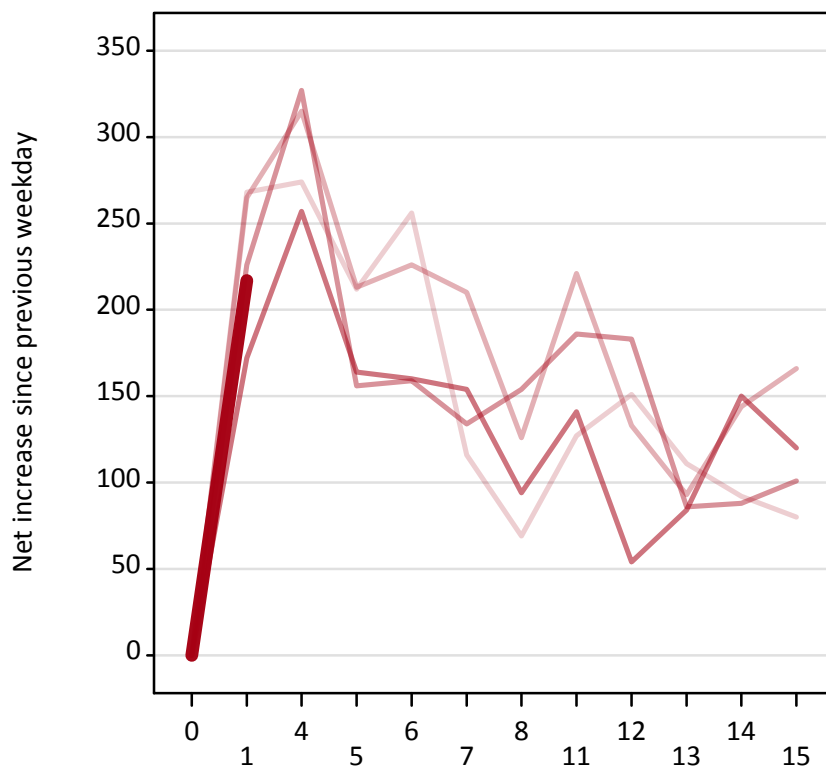
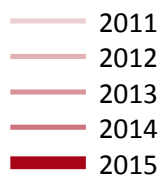
**AX.17 Direct to Clearing applicants from Scotland: 1 day after A level results day**

Placed (Direct to Clearing): difference between cycle and 2014 cycle

Applicant type	Status	2011	2012	2013	2014	2015
Direct to Clearing	Placed (Direct to Clearing)	-14%	-14%	2%	0%	27%

### AX.18 All Placed: Daily net change (from Scotland)

Net increase since previous weekday (2015 cycle up to 1 day after A level results day)



### AX.19 All Placed: Daily net change (from Scotland)

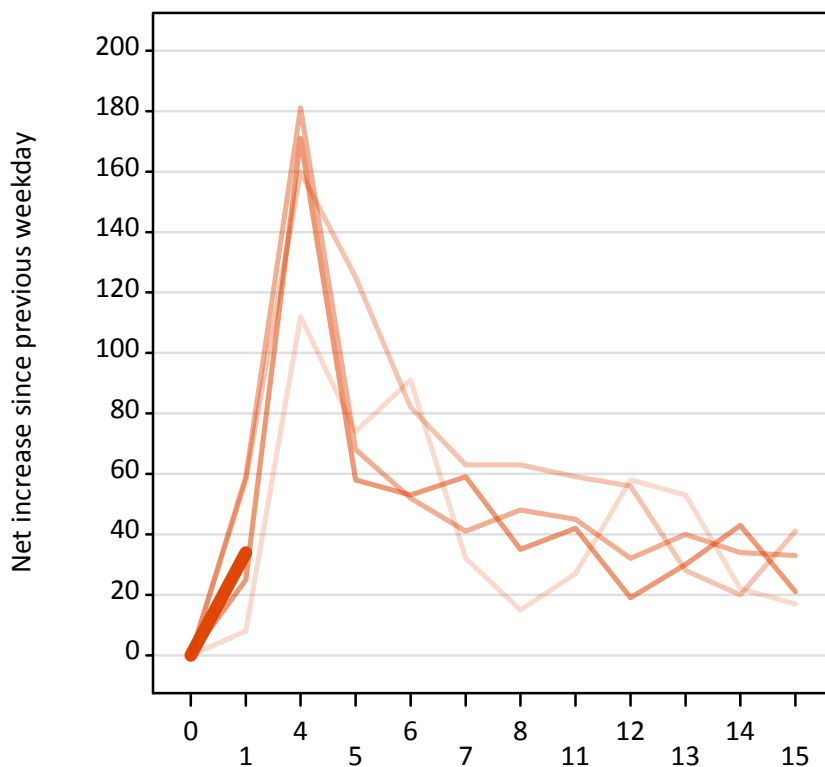
Net increase since previous weekday (2015 cycle up to 1 day after A level results day)

Applicant status, days since A level results day		2011	2012	2013	2014	2015
All Placed	0	0	0	0	0	0
	1	270	270	230	170	220
	4	270	320	330	260	
	5	210	210	160	160	
	6	260	230	160	160	
	7	120	210	130	150	
	8	70	130	150	90	
	11	130	220	190	140	
	12	150	130	180	50	
	13	110	90	90	80	
	14	90	140	90	150	
	15	80	170	100	120	

**AX.20 Placed through Clearing only: Daily net change (from Scotland)**

Net increase since previous weekday (2015 cycle up to 1 day after A level results day)

- 2011
- 2012
- 2013
- 2014
- 2015



**AX.21 Placed through Clearing only: Daily net change (from Scotland)**

Net increase since previous weekday (2015 cycle up to 1 day after A level results day)

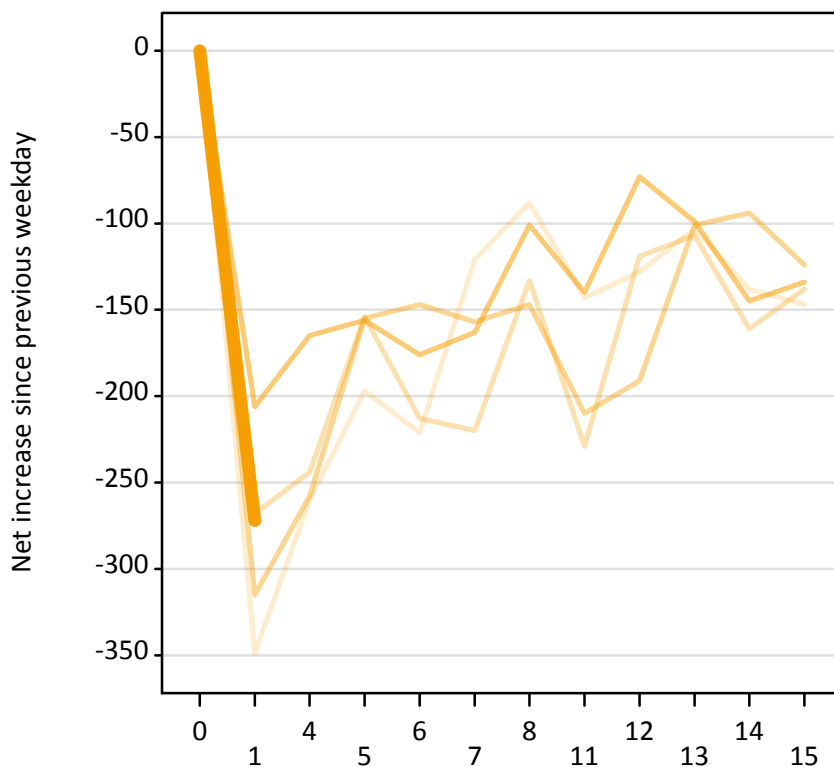
Applicant status, days since A level results day		2011	2012	2013	2014	2015
Placed through Clearing only	0	0	0	0	0	0
	1	10	60	60	30	30
	4	110	160	180	170	
	5	70	130	70	60	
	6	90	80	50	50	
	7	30	60	40	60	
	8	20	60	50	40	
	11	30	60	50	40	
	12	60	60	30	20	
	13	50	30	40	30	
	14	20	20	30	40	
	15	20	40	30	20	



### AX.22 Holding Offer: Daily net change (from Scotland)

Net increase since previous weekday (2015 cycle up to 1 day after A level results day)

- 2011
- 2012
- 2013
- 2014
- 2015



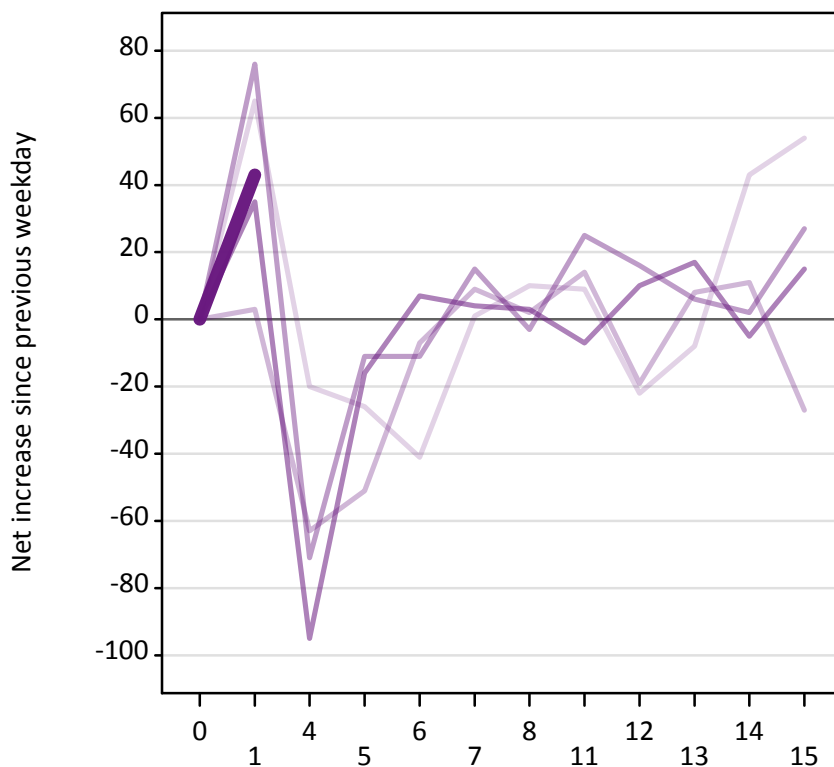
### AX.23 Holding Offer: Daily net change (from Scotland)

Net increase since previous weekday (2015 cycle up to 1 day after A level results day)

Applicant status, days since A level results day		2011	2012	2013	2014	2015
Holding Offer	0	0	0	0	0	0
	1	-350	-270	-320	-210	-270
	4	-260	-240	-260	-170	
	5	-200	-150	-160	-160	
	6	-220	-210	-150	-180	
	7	-120	-220	-160	-160	
	8	-90	-130	-150	-100	
	11	-140	-230	-210	-140	
	12	-130	-120	-190	-70	
	13	-100	-110	-100	-100	
	14	-140	-160	-90	-150	
	15	-150	-140	-120	-130	

### AX.24 Free to be placed in Clearing: Daily net change (from Scotland)

Net increase since previous weekday (2015 cycle up to 1 day after A level results day)



### AX.25 Free to be placed in Clearing: Daily net change (from Scotland)

Net increase since previous weekday (2015 cycle up to 1 day after A level results day)

Applicant status, days since A level results day		2011	2012	2013	2014	2015
Free to be placed in Clearing	0	0	0	0	0	0
	1	70	0	80	40	40
	4	-20	-60	-70	-100	
	5	-30	-50	-10	-20	
	6	-40	-10	-10	10	
	7	0	10	20	0	
	8	10	0	0	0	
	11	10	10	30	-10	
	12	-20	-20	20	10	
	13	-10	10	10	20	
	14	40	10	0	-10	
	15	50	-30	30	20	