

# Daily Clearing Analysis: Sex

**Analysis at 00:05 on Friday 14 August 2015 (1 day after A level results day - No Scot.X1)**

**SX.1 Placed applicants from all domiciles by sex: 1 day after A level results day**

Placed applicants: change relative to 2014 cycle totals

Men  
Women



**SX.2 Placed applicants from all domiciles by sex: 1 day after A level results day**

Applicant Status	Sex	2011	2012	2013	2014	2015
Placed	Men	177,210	161,450	177,610	179,810	184,390
	Women	219,740	205,850	223,260	231,770	241,680
	All	396,950	367,300	400,880	411,570	426,070

**SX.3 Placed applicants from all domiciles by sex: 1 day after A level results day**

Placed applicants: change relative to 2014 cycle totals

Applicant Status	Sex	2011	2012	2013	2014	2015
Placed	Men	-1%	-10%	-1%	0%	3%
	Women	-5%	-11%	-4%	0%	4%
	All	-4%	-11%	-3%	0%	4%

**SX.4 Placed applicants from all domiciles by sex: 1 day after A level results day**

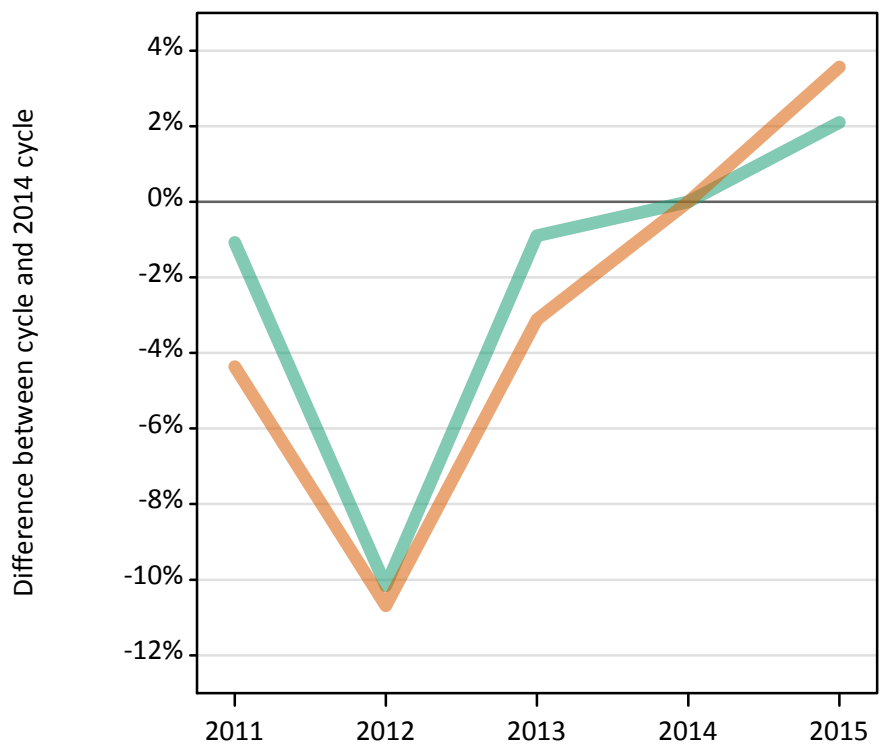
Placed applicants: absolute change relative to 2014 cycle totals

Applicant Status	Sex	2011	2012	2013	2014	2015
Placed	Men	-2,600	-18,350	-2,190	0	4,580
	Women	-12,030	-25,920	-8,510	0	9,920
	All	-14,620	-44,270	-10,700	0	14,500

### SX.5 Placed applicants from the UK by sex: 1 day after A level results day

Placed applicants: change relative to 2014 cycle totals

Men  
Women



### SX.6 Placed applicants from the UK by sex: 1 day after A level results day

Applicant Status	Sex	2011	2012	2013	2014	2015
Placed	Men	155,550	141,260	155,820	157,240	160,540
	Women	194,780	181,900	197,320	203,670	210,940
	All	350,340	323,160	353,140	360,910	371,480

### SX.7 Placed applicants from the UK by sex: 1 day after A level results day

Placed applicants: change relative to 2014 cycle totals

Applicant Status	Sex	2011	2012	2013	2014	2015
Placed	Men	-1%	-10%	-1%	0%	2%
	Women	-4%	-11%	-3%	0%	4%
	All	-3%	-10%	-2%	0%	3%

### SX.8 Placed applicants from the UK by sex: 1 day after A level results day

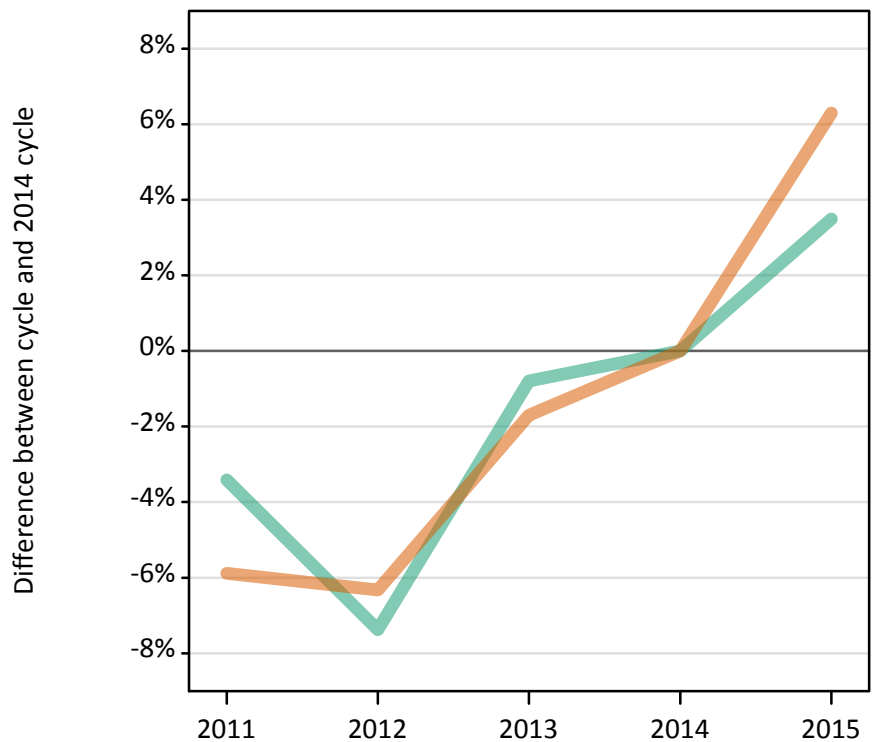
Placed applicants: absolute change relative to 2014 cycle totals

Applicant Status	Sex	2011	2012	2013	2014	2015
Placed	Men	-1,680	-15,980	-1,410	0	3,300
	Women	-8,890	-21,760	-6,350	0	7,270
	All	-10,570	-37,750	-7,770	0	10,570

### SX.9 Placed 18 year old applicants from the UK by sex: 1 day after A level results day

Placed 18 year old applicants: change relative to 2014 cycle totals

Men  
Women



### SX.10 Placed 18 year old applicants from the UK by sex: 1 day after A level results day

Applicant Status	Sex	2011	2012	2013	2014	2015
Placed	Men	83,660	80,230	85,930	86,610	89,640
	Women	103,890	103,410	108,510	110,390	117,340
	All	187,550	183,630	194,440	197,000	206,980

### SX.11 Placed 18 year old applicants from the UK by sex: 1 day after A level results day

Placed 18 year old applicants: change relative to 2014 cycle totals

Applicant Status	Sex	2011	2012	2013	2014	2015
Placed	Men	-3%	-7%	-1%	0%	3%
	Women	-6%	-6%	-2%	0%	6%
	All	-5%	-7%	-1%	0%	5%

### SX.12 Placed 18 year old applicants from the UK by sex: 1 day after A level results day

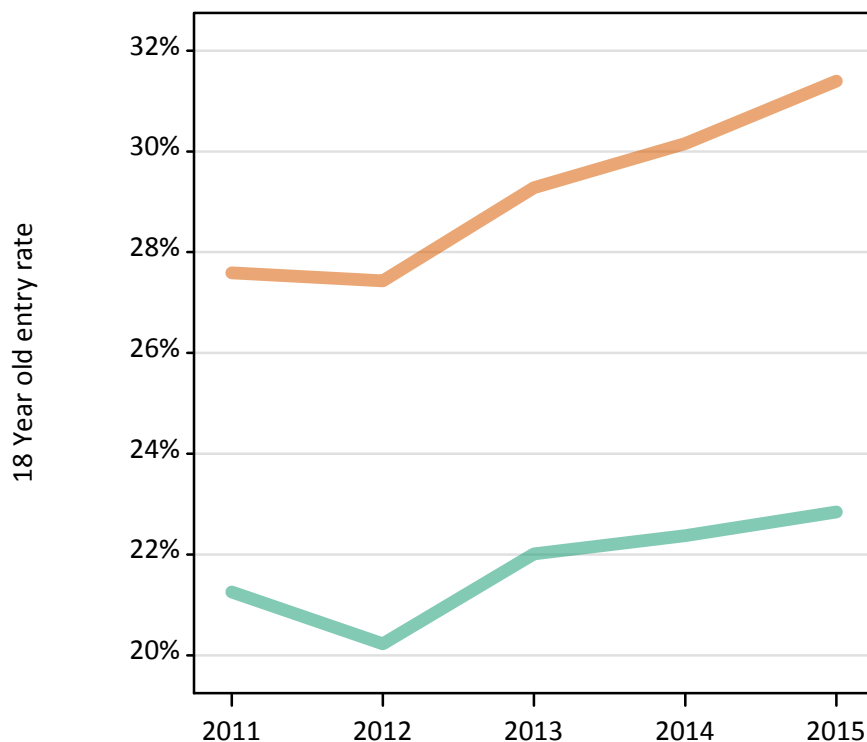
Placed 18 year old applicants: absolute change relative to 2014 cycle totals

Applicant Status	Sex	2011	2012	2013	2014	2015
Placed	Men	-2,960	-6,390	-690	0	3,030
	Women	-6,500	-6,980	-1,880	0	6,950
	All	-9,450	-13,370	-2,560	0	9,980

**SX.13 Placed 18 year old applicants from the UK by sex: 1 day after A level results day**

Placed 18 year old applicants: entry rate

Men  
Women



**SX.14 Placed 18 year old applicants from the UK by sex: 1 day after A level results day**

Placed 18 year old applicants: entry rate

Applicant Status	Sex	2011	2012	2013	2014	2015
Placed	Men	21.3%	20.2%	22.0%	22.4%	22.8%
	Women	27.6%	27.4%	29.3%	30.2%	31.4%
	All	24.4%	23.7%	25.6%	26.2%	27.0%

**SX.15 Placed 18 year old applicants from the UK by sex: 1 day after A level results day**

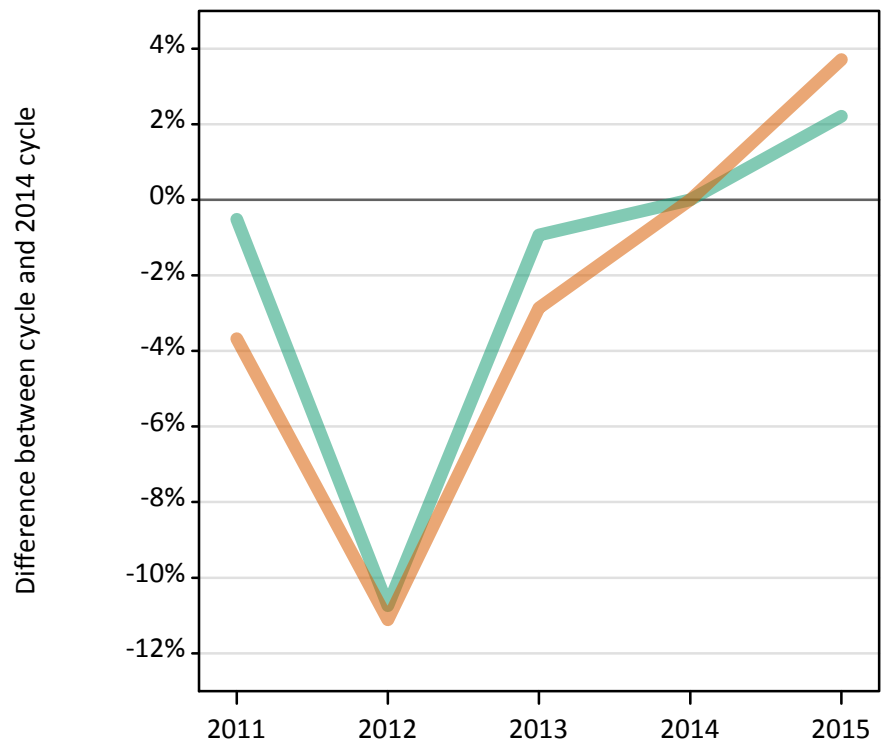
Placed 18 year old applicants: entry rate (indexed to 100 = Men)

Applicant Status	Sex	2011	2012	2013	2014	2015
Placed	Men	100	100	100	100	100
	Women	130	136	133	135	137

### SX.16 Placed applicants from England by sex: 1 day after A level results day

Placed applicants: change relative to 2014 cycle totals

Men  
Women



### SX.17 Placed applicants from England by sex: 1 day after A level results day

Applicant Status	Sex	2011	2012	2013	2014	2015
Placed	Men	132,870	119,210	132,320	133,560	136,520
	Women	165,160	152,400	166,550	171,460	177,810
	All	298,030	271,620	298,870	305,020	314,330

### SX.18 Placed applicants from England by sex: 1 day after A level results day

Placed applicants: change relative to 2014 cycle totals

Applicant Status	Sex	2011	2012	2013	2014	2015
Placed	Men	-1%	-11%	-1%	0%	2%
	Women	-4%	-11%	-3%	0%	4%
	All	-2%	-11%	-2%	0%	3%

### SX.19 Placed applicants from England by sex: 1 day after A level results day

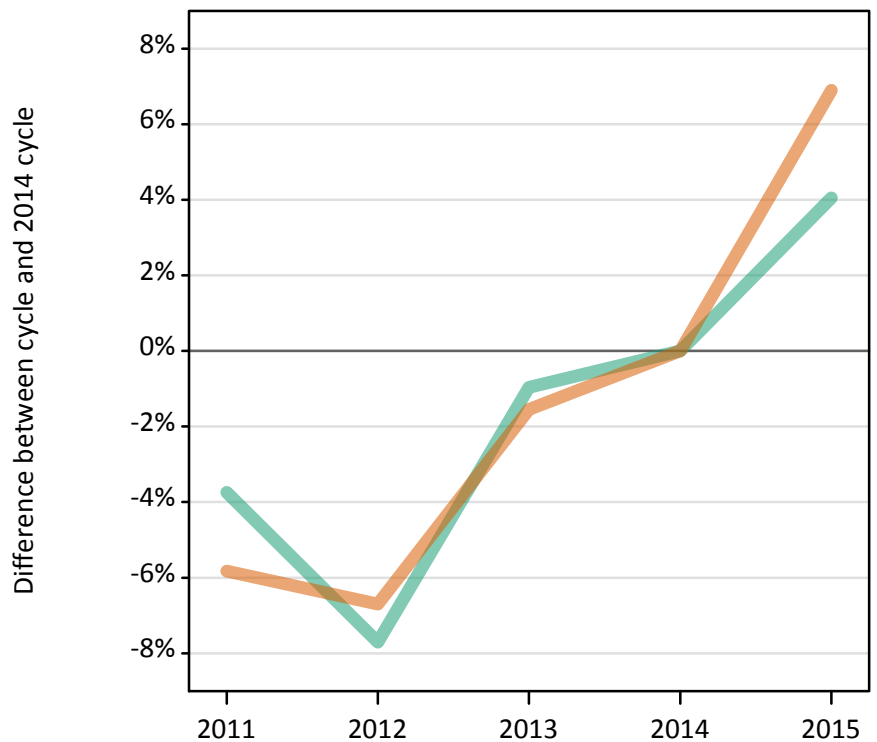
Placed applicants: absolute change relative to 2014 cycle totals

Applicant Status	Sex	2011	2012	2013	2014	2015
Placed	Men	-690	-14,350	-1,240	0	2,960
	Women	-6,300	-19,050	-4,910	0	6,360
	All	-6,990	-33,400	-6,150	0	9,320

### SX.20 Placed 18 year old applicants from England by sex: 1 day after A level results day

Placed 18 year old applicants: change relative to 2014 cycle totals

Men  
Women



### SX.21 Placed 18 year old applicants from England by sex: 1 day after A level results day

Applicant Status	Sex	2011	2012	2013	2014	2015
Placed	Men	71,170	68,240	73,230	73,940	76,930
	Women	87,790	86,970	91,780	93,210	99,640
	All	158,960	155,210	165,000	167,150	176,570

### SX.22 Placed 18 year old applicants from England by sex: 1 day after A level results day

Placed 18 year old applicants: change relative to 2014 cycle totals

Applicant Status	Sex	2011	2012	2013	2014	2015
Placed	Men	-4%	-8%	-1%	0%	4%
	Women	-6%	-7%	-2%	0%	7%
	All	-5%	-7%	-1%	0%	6%

### SX.23 Placed 18 year old applicants from England by sex: 1 day after A level results day

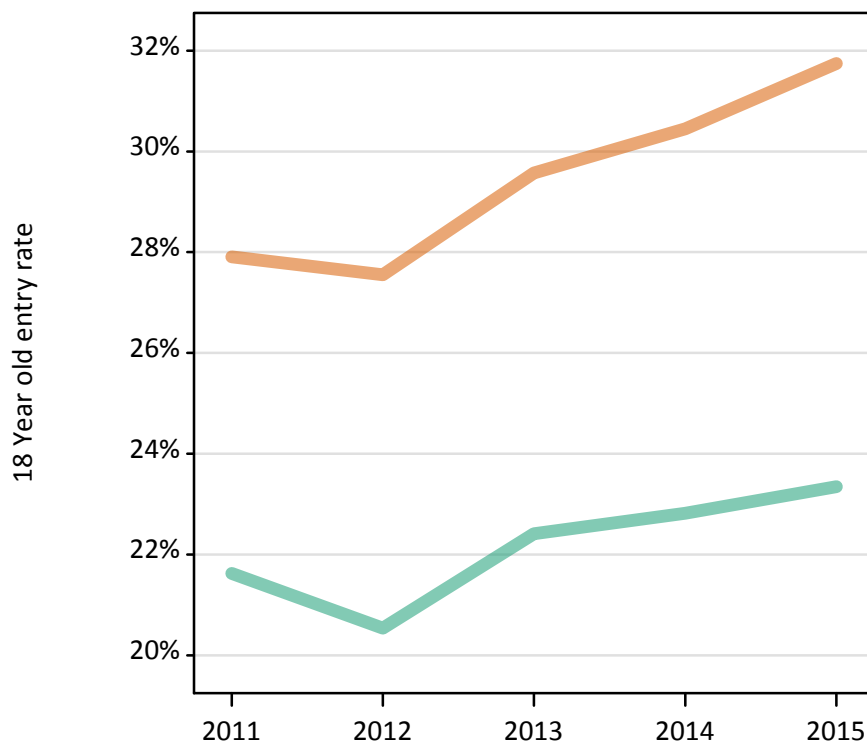
Placed 18 year old applicants: absolute change relative to 2014 cycle totals

Applicant Status	Sex	2011	2012	2013	2014	2015
Placed	Men	-2,770	-5,700	-710	0	2,990
	Women	-5,430	-6,250	-1,440	0	6,430
	All	-8,190	-11,950	-2,150	0	9,420

**SX.24 Placed 18 year old applicants from England by sex: 1 day after A level results day**

Placed 18 year old applicants: entry rate

Men  
Women



**SX.25 Placed 18 year old applicants from England by sex: 1 day after A level results day**

Placed 18 year old applicants: entry rate

Applicant Status	Sex	2011	2012	2013	2014	2015
Placed	Men	21.6%	20.5%	22.4%	22.8%	23.3%
	Women	27.9%	27.6%	29.6%	30.5%	31.7%
	All	24.7%	24.0%	25.9%	26.5%	27.4%

**SX.26 Placed 18 year old applicants from England by sex: 1 day after A level results day**

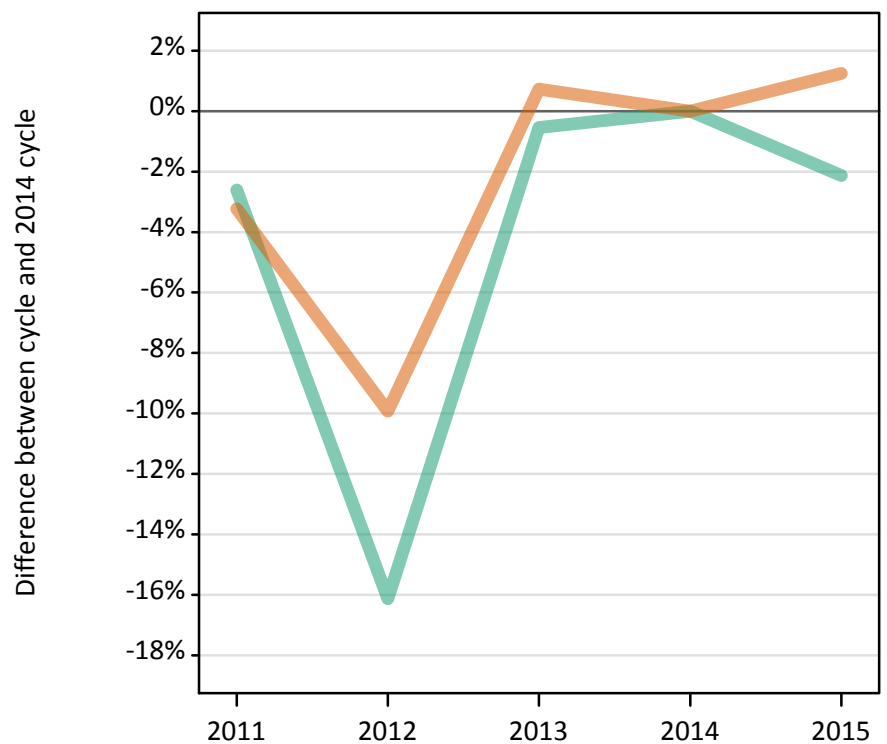
Placed 18 year old applicants: entry rate (indexed to 100 = Men)

Applicant Status	Sex	2011	2012	2013	2014	2015
Placed	Men	100	100	100	100	100
	Women	129	134	132	133	136

### SX.27 Placed applicants from Northern Ireland by sex: 1 day after A level results day

Placed applicants: change relative to 2014 cycle totals

Men  
Women



### SX.28 Placed applicants from Northern Ireland by sex: 1 day after A level results day

Applicant Status	Sex	2011	2012	2013	2014	2015
Placed	Men	5,040	4,340	5,140	5,170	5,060
	Women	6,380	5,940	6,640	6,590	6,670
	All	11,410	10,270	11,780	11,760	11,730

### SX.29 Placed applicants from Northern Ireland by sex: 1 day after A level results day

Placed applicants: change relative to 2014 cycle totals

Applicant Status	Sex	2011	2012	2013	2014	2015
Placed	Men	-3%	-16%	-1%	0%	-2%
	Women	-3%	-10%	1%	0%	1%
	All	-3%	-13%	0%	0%	-0%

### SX.30 Placed applicants from Northern Ireland by sex: 1 day after A level results day

Placed applicants: absolute change relative to 2014 cycle totals

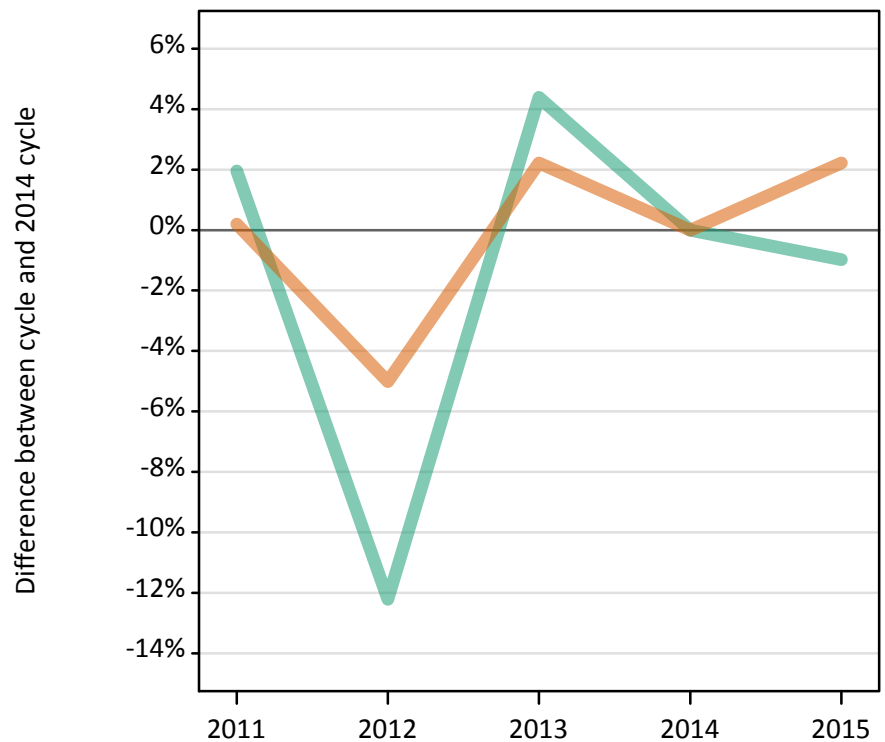
Applicant Status	Sex	2011	2012	2013	2014	2015
Placed	Men	-140	-830	-30	0	-110
	Women	-210	-650	50	0	80
	All	-350	-1,490	20	0	-30



### SX.31 Placed 18 year old applicants from Northern Ireland by sex: 1 day after A level results day

Placed 18 year old applicants: change relative to 2014 cycle totals

Men  
Women



### SX.32 Placed 18 year old applicants from Northern Ireland by sex: 1 day after A level results day

Applicant Status	Sex	2011	2012	2013	2014	2015
Placed	Men	3,020	2,600	3,090	2,960	2,940
	Women	4,120	3,900	4,200	4,110	4,200
	All	7,140	6,500	7,290	7,070	7,130

### SX.33 Placed 18 year old applicants from Northern Ireland by sex: 1 day after A level results day

Placed 18 year old applicants: change relative to 2014 cycle totals

Applicant Status	Sex	2011	2012	2013	2014	2015
Placed	Men	2%	-12%	4%	0%	-1%
	Women	0%	-5%	2%	0%	2%
	All	1%	-8%	3%	0%	1%

### SX.34 Placed 18 year old applicants from Northern Ireland by sex: 1 day after A level results day

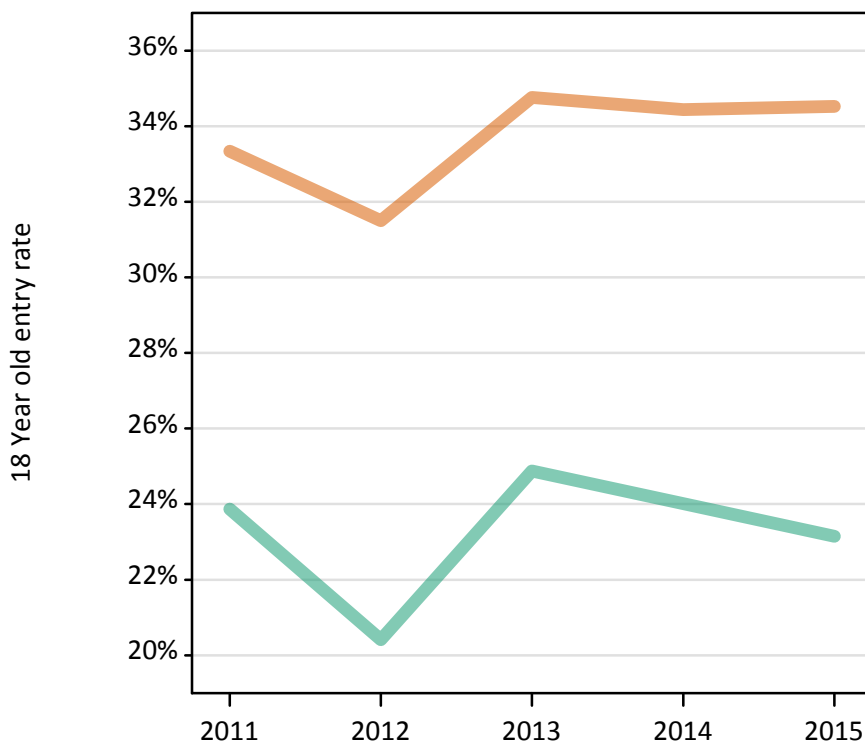
Placed 18 year old applicants: absolute change relative to 2014 cycle totals

Applicant Status	Sex	2011	2012	2013	2014	2015
Placed	Men	60	-360	130	0	-30
	Women	10	-210	90	0	90
	All	70	-570	220	0	60

**SX.35 Placed 18 year old applicants from Northern Ireland by sex: 1 day after A level results day**

Placed 18 year old applicants: entry rate

Men  
Women



**SX.36 Placed 18 year old applicants from Northern Ireland by sex: 1 day after A level results day**

Placed 18 year old applicants: entry rate

Applicant Status	Sex	2011	2012	2013	2014	2015
Placed	Men	23.9%	20.4%	24.9%	24.0%	23.2%
	Women	33.3%	31.5%	34.8%	34.4%	34.5%
	All	28.5%	25.9%	29.7%	29.1%	28.7%

**SX.37 Placed 18 year old applicants from Northern Ireland by sex: 1 day after A level results day**

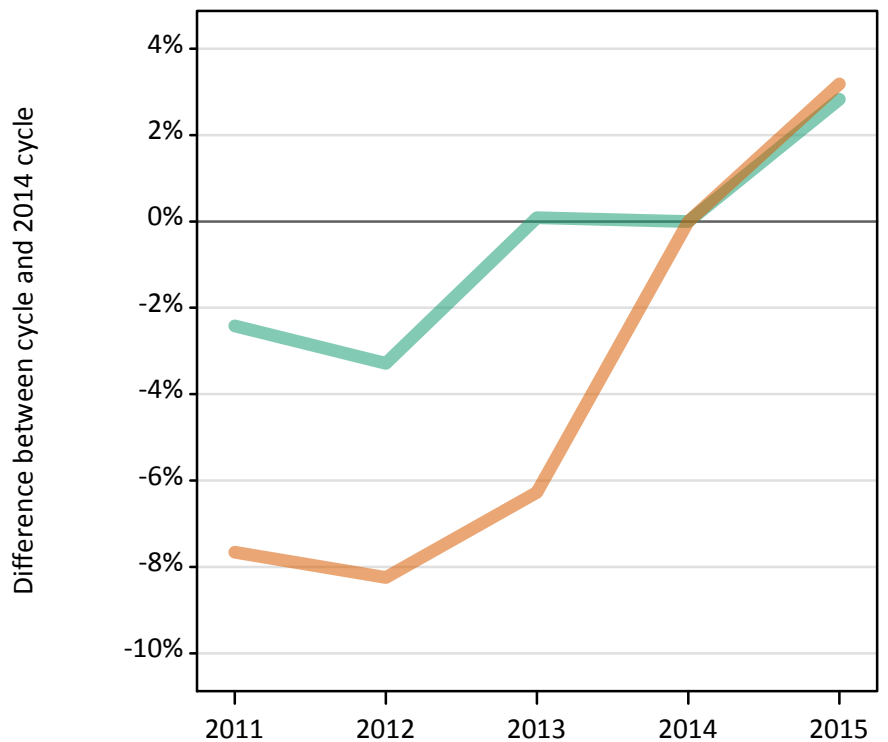
Placed 18 year old applicants: entry rate (indexed to 100 = Men)

Applicant Status	Sex	2011	2012	2013	2014	2015
Placed	Men	100	100	100	100	100
	Women	140	154	140	143	149

### SX.38 Placed applicants from Scotland by sex: 1 day after A level results day

Placed applicants: change relative to 2014 cycle totals

Men  
Women



### SX.39 Placed applicants from Scotland by sex: 1 day after A level results day

Applicant Status	Sex	2011	2012	2013	2014	2015
Placed	Men	11,240	11,140	11,530	11,520	11,850
	Women	14,770	14,670	14,990	15,990	16,500
	All	26,010	25,820	26,520	27,510	28,350

### SX.40 Placed applicants from Scotland by sex: 1 day after A level results day

Placed applicants: change relative to 2014 cycle totals

Applicant Status	Sex	2011	2012	2013	2014	2015
Placed	Men	-2%	-3%	0%	0%	3%
	Women	-8%	-8%	-6%	0%	3%
	All	-5%	-6%	-4%	0%	3%

### SX.41 Placed applicants from Scotland by sex: 1 day after A level results day

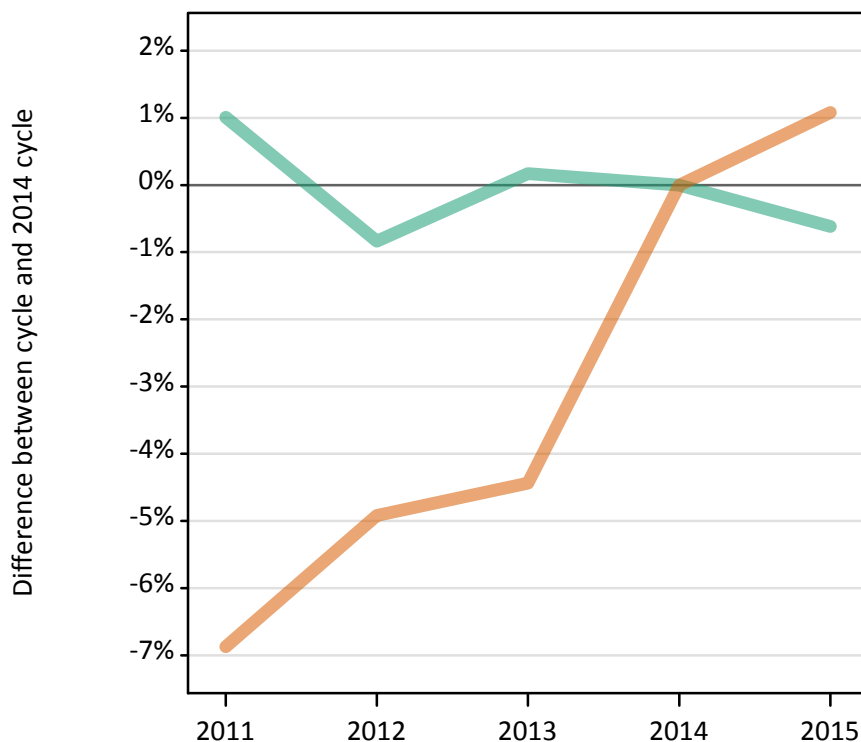
Placed applicants: absolute change relative to 2014 cycle totals

Applicant Status	Sex	2011	2012	2013	2014	2015
Placed	Men	-280	-380	10	0	330
	Women	-1,230	-1,320	-1,000	0	510
	All	-1,500	-1,700	-990	0	840

### SX.42 Placed 18 year old applicants from Scotland by sex: 1 day after A level results day

Placed 18 year old applicants: change relative to 2014 cycle totals

Men  
Women



### SX.43 Placed 18 year old applicants from Scotland by sex: 1 day after A level results day

Applicant Status	Sex	2011	2012	2013	2014	2015
Placed	Men	5,920	5,810	5,870	5,860	5,830
	Women	7,350	7,500	7,540	7,890	7,970
	All	13,270	13,310	13,410	13,750	13,800

### SX.44 Placed 18 year old applicants from Scotland by sex: 1 day after A level results day

Placed 18 year old applicants: change relative to 2014 cycle totals

Applicant Status	Sex	2011	2012	2013	2014	2015
Placed	Men	1%	-1%	0%	0%	-1%
	Women	-7%	-5%	-4%	0%	1%
	All	-4%	-3%	-2%	0%	0%

### SX.45 Placed 18 year old applicants from Scotland by sex: 1 day after A level results day

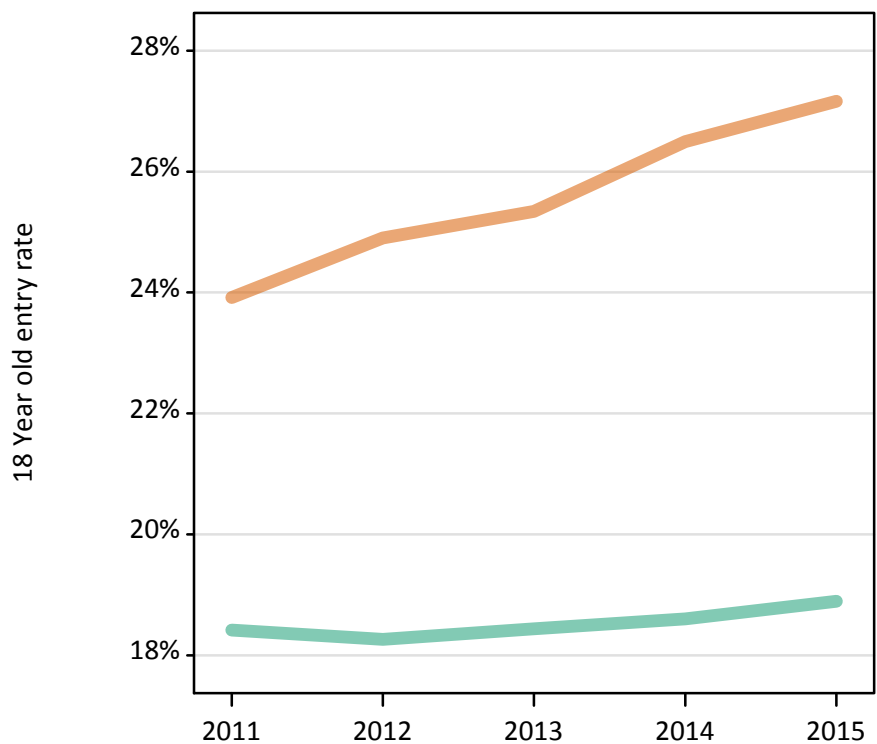
Placed 18 year old applicants: absolute change relative to 2014 cycle totals

Applicant Status	Sex	2011	2012	2013	2014	2015
Placed	Men	60	-50	10	0	-40
	Women	-540	-390	-350	0	90
	All	-480	-440	-340	0	50

**SX.46 Placed 18 year old applicants from Scotland by sex: 1 day after A level results day**

Placed 18 year old applicants: entry rate

Men  
Women



**SX.47 Placed 18 year old applicants from Scotland by sex: 1 day after A level results day**

Placed 18 year old applicants: entry rate

Applicant Status	Sex	2011	2012	2013	2014	2015
Placed	Men	18.4%	18.3%	18.4%	18.6%	18.9%
	Women	23.9%	24.9%	25.3%	26.5%	27.2%
	All	21.1%	21.5%	21.8%	22.4%	22.9%

**SX.48 Placed 18 year old applicants from Scotland by sex: 1 day after A level results day**

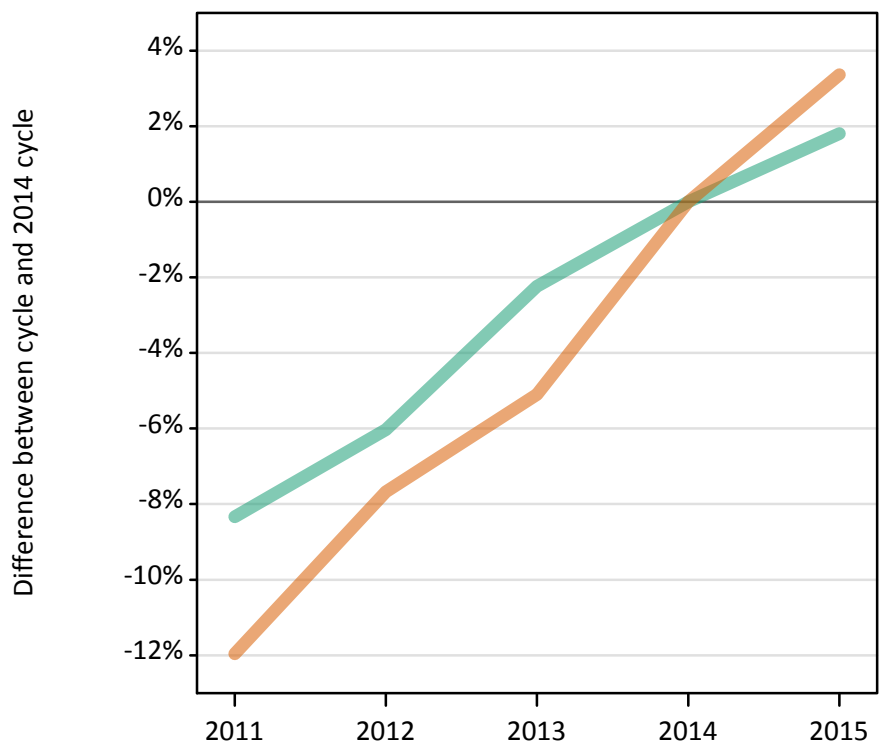
Placed 18 year old applicants: entry rate (indexed to 100 = Men)

Applicant Status	Sex	2011	2012	2013	2014	2015
Placed	Men	100	100	100	100	100
	Women	130	136	137	142	144

### SX.49 Placed applicants from Wales by sex: 1 day after A level results day

Placed applicants: change relative to 2014 cycle totals

Men  
Women



### SX.50 Placed applicants from Wales by sex: 1 day after A level results day

Applicant Status	Sex	2011	2012	2013	2014	2015
Placed	Men	6,400	6,560	6,830	6,980	7,110
	Women	8,480	8,900	9,140	9,630	9,960
	All	14,880	15,460	15,970	16,620	17,070

### SX.51 Placed applicants from Wales by sex: 1 day after A level results day

Placed applicants: change relative to 2014 cycle totals

Applicant Status	Sex	2011	2012	2013	2014	2015
Placed	Men	-8%	-6%	-2%	0%	2%
	Women	-12%	-8%	-5%	0%	3%
	All	-10%	-7%	-4%	0%	3%

### SX.52 Placed applicants from Wales by sex: 1 day after A level results day

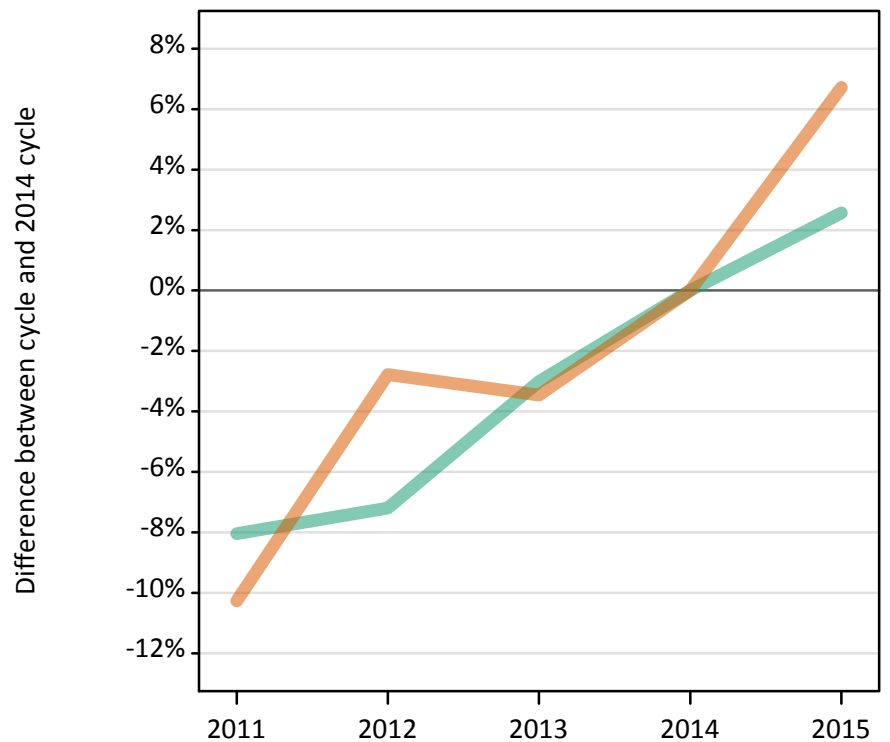
Placed applicants: absolute change relative to 2014 cycle totals

Applicant Status	Sex	2011	2012	2013	2014	2015
Placed	Men	-580	-420	-160	0	130
	Women	-1,150	-740	-490	0	320
	All	-1,730	-1,160	-650	0	450

### SX.53 Placed 18 year old applicants from Wales by sex: 1 day after A level results day

Placed 18 year old applicants: change relative to 2014 cycle totals

Men  
Women



### SX.54 Placed 18 year old applicants from Wales by sex: 1 day after A level results day

Applicant Status	Sex	2011	2012	2013	2014	2015
Placed	Men	3,540	3,580	3,740	3,850	3,950
	Women	4,650	5,040	5,000	5,180	5,530
	All	8,190	8,610	8,740	9,030	9,480

### SX.55 Placed 18 year old applicants from Wales by sex: 1 day after A level results day

Placed 18 year old applicants: change relative to 2014 cycle totals

Applicant Status	Sex	2011	2012	2013	2014	2015
Placed	Men	-8%	-7%	-3%	0%	3%
	Women	-10%	-3%	-3%	0%	7%
	All	-9%	-5%	-3%	0%	5%

### SX.56 Placed 18 year old applicants from Wales by sex: 1 day after A level results day

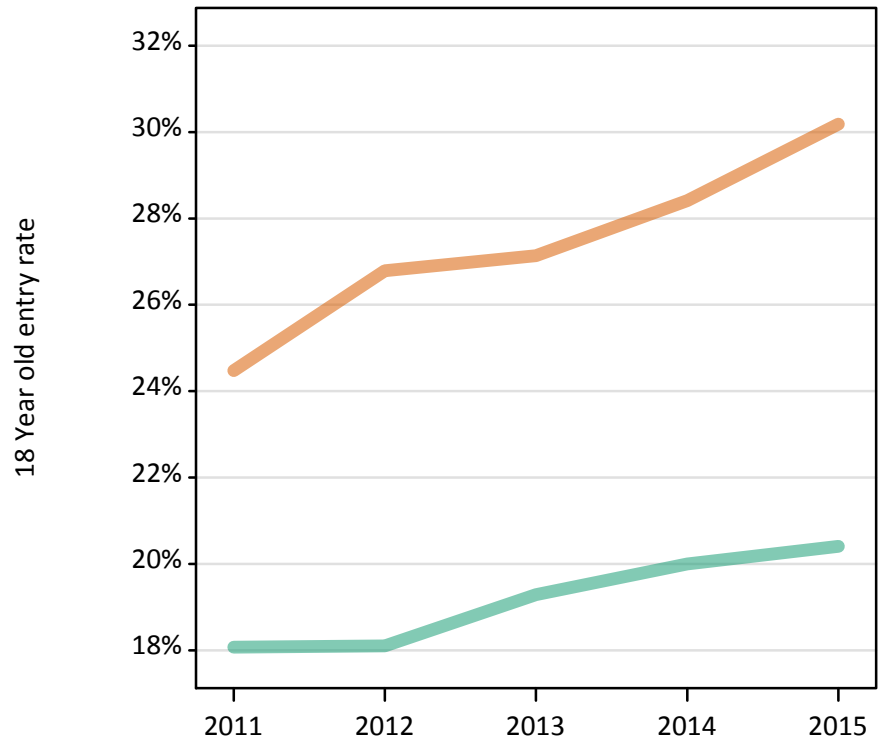
Placed 18 year old applicants: absolute change relative to 2014 cycle totals

Applicant Status	Sex	2011	2012	2013	2014	2015
Placed	Men	-310	-280	-120	0	100
	Women	-530	-140	-180	0	350
	All	-840	-420	-300	0	450

**SX.57 Placed 18 year old applicants from Wales by sex: 1 day after A level results day**

Placed 18 year old applicants: entry rate

Men  
Women



**SX.58 Placed 18 year old applicants from Wales by sex: 1 day after A level results day**

Placed 18 year old applicants: entry rate

Applicant Status	Sex	2011	2012	2013	2014	2015
Placed	Men	18.1%	18.1%	19.3%	20.0%	20.4%
	Women	24.5%	26.8%	27.1%	28.4%	30.2%
	All	21.2%	22.3%	23.1%	24.1%	25.2%

**SX.59 Placed 18 year old applicants from Wales by sex: 1 day after A level results day**

Placed 18 year old applicants: entry rate (indexed to 100 = Men)

Applicant Status	Sex	2011	2012	2013	2014	2015
Placed	Men	100	100	100	100	100
	Women	135	148	141	142	148



### SX.60 Placed applicants from the EU (excluding the UK) by sex: 1 day after A level results day

Placed applicants: change relative to 2014 cycle totals

Men  
Women



### SX.61 Placed applicants from the EU (excluding the UK) by sex: 1 day after A level results day

Applicant Status	Sex	2011	2012	2013	2014	2015
Placed	Men	10,010	8,410	9,080	9,510	10,360
	Women	12,360	10,770	11,560	12,750	14,270
	All	22,370	19,180	20,640	22,260	24,630

### SX.62 Placed applicants from the EU (excluding the UK) by sex: 1 day after A level results day

Placed applicants: change relative to 2014 cycle totals

Applicant Status	Sex	2011	2012	2013	2014	2015
Placed	Men	5%	-12%	-5%	0%	9%
	Women	-3%	-16%	-9%	0%	12%
	All	0%	-14%	-7%	0%	11%

### SX.63 Placed applicants from the EU (excluding the UK) by sex: 1 day after A level results day

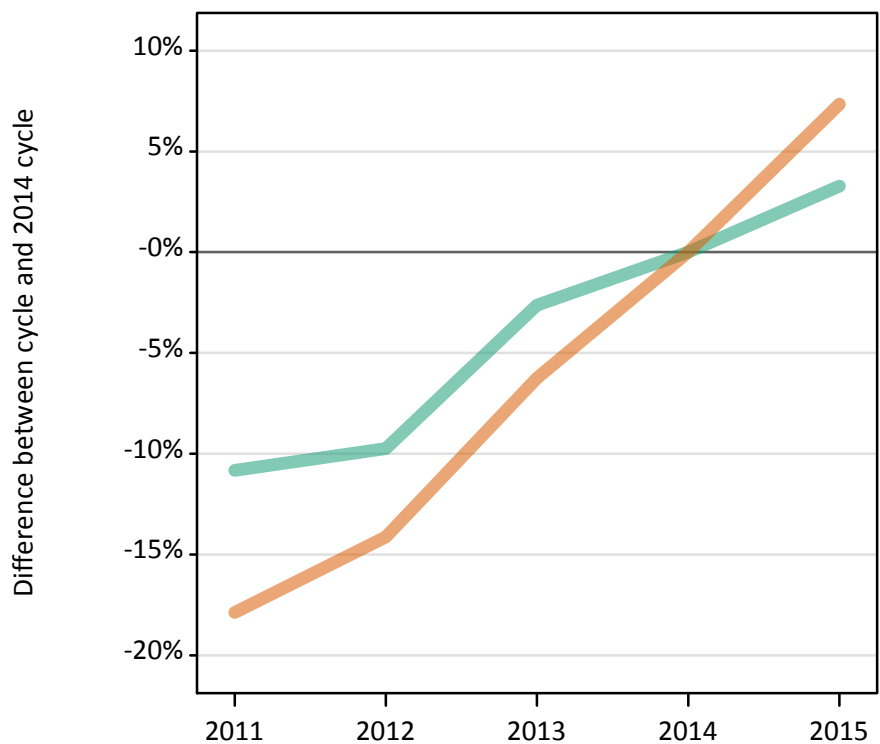
Placed applicants: absolute change relative to 2014 cycle totals

Applicant Status	Sex	2011	2012	2013	2014	2015
Placed	Men	500	-1,100	-430	0	850
	Women	-390	-1,980	-1,190	0	1,520
	All	110	-3,080	-1,630	0	2,370

### SX.64 Placed applicants from overseas (not EU) by sex: 1 day after A level results day

Placed applicants: change relative to 2014 cycle totals

Men  
Women



### SX.65 Placed applicants from overseas (not EU) by sex: 1 day after A level results day

Applicant Status	Sex	2011	2012	2013	2014	2015
Placed	Men	11,640	11,780	12,710	13,060	13,490
	Women	12,600	13,180	14,390	15,350	16,470
	All	24,250	24,960	27,100	28,400	29,960

### SX.66 Placed applicants from overseas (not EU) by sex: 1 day after A level results day

Placed applicants: change relative to 2014 cycle totals

Applicant Status	Sex	2011	2012	2013	2014	2015
Placed	Men	-11%	-10%	-3%	0%	3%
	Women	-18%	-14%	-6%	0%	7%
	All	-15%	-12%	-5%	0%	5%

### SX.67 Placed applicants from overseas (not EU) by sex: 1 day after A level results day

Placed applicants: absolute change relative to 2014 cycle totals

Applicant Status	Sex	2011	2012	2013	2014	2015
Placed	Men	-1,410	-1,270	-340	0	430
	Women	-2,740	-2,170	-960	0	1,130
	All	-4,160	-3,440	-1,300	0	1,560