

Analysis at 00:05 on Friday 14 August 2015 (1 day after A level results day - No Scot.X1)

CX.1 Placed applicants by country of domicile and age group, 2015 cycle (1 day after A level results day)

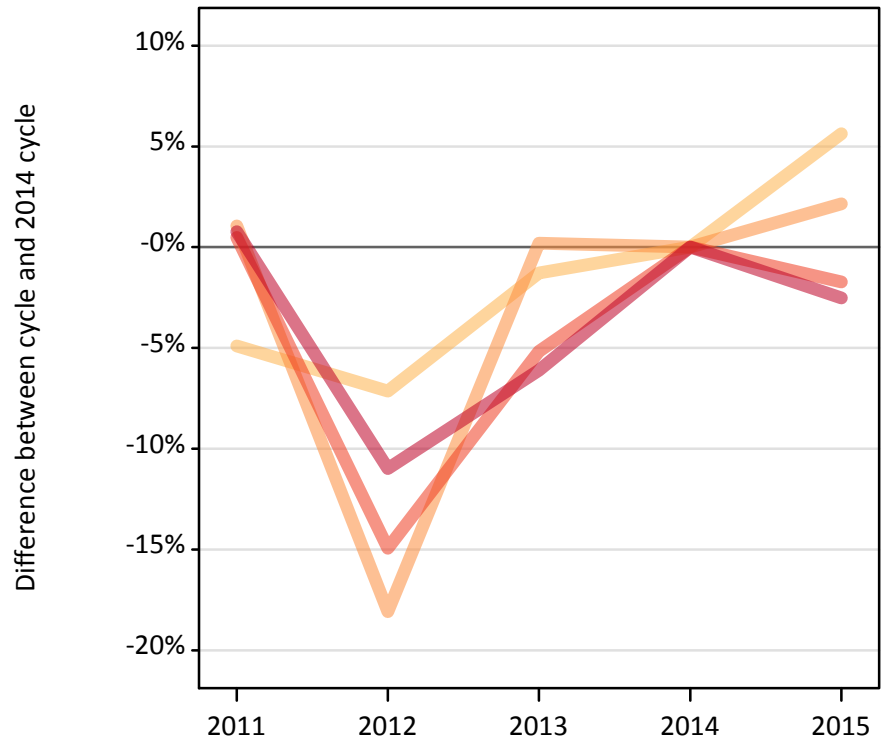
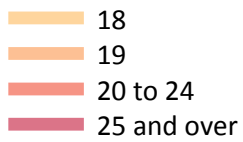
Domicile of applicant	Age group	2015
England	17	610
	18	176,570
	19	65,200
	20 to 24	45,110
	25 and over	26,850
Northern Ireland	17	20
	18	7,130
	19	1,800
	20 to 24	2,010
	25 and over	770
Scotland	17	380
	18	13,800
	19	3,820
	20 to 24	6,410
	25 and over	3,940
Wales	17	10
	18	9,480
	19	3,220
	20 to 24	2,630
	25 and over	1,720
UK	17	1,020
	18	206,980
	19	74,050
	20 to 24	56,150
	25 and over	33,280

CX.2 Proportion of 18 year old population placed by country of domicile, 2015 cycle (1 day after A level results day)

Domicile of applicant	Age group	2015
England	18	27%
Northern Ireland	18	29%
Scotland	18	23%
Wales	18	25%

CX.3 Placed applicants from England by age group at 1 day after A level results day

Selected age groups: difference between cycle and 2014 cycle



CX.4 Placed applicants from England by age group at 1 day after A level results day

All age groups

Domicile of applicant	Age group	2011	2012	2013	2014	2015
England	17	710	570	530	610	610
	18	158,960	155,210	165,000	167,150	176,570
	19	64,500	52,280	63,950	63,820	65,200
	20 to 24	46,120	39,040	43,530	45,900	45,110
	25 and over	27,750	24,520	25,860	27,540	26,850

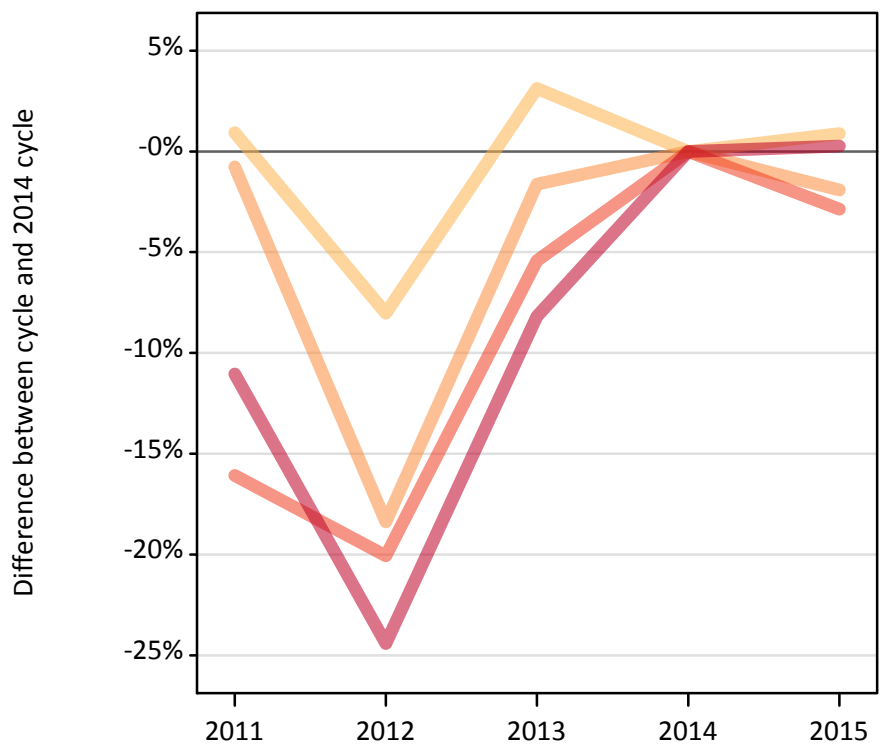
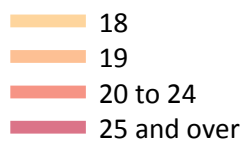
CX.5 Placed applicants from England by age group at 1 day after A level results day

Selected age groups: difference between cycle and 2014 cycle

Domicile of applicant	Age group	2011	2012	2013	2014	2015
England	18	-5%	-7%	-1%	0%	6%
	19	1%	-18%	0%	0%	2%
	20 to 24	0%	-15%	-5%	0%	-2%
	25 and over	1%	-11%	-6%	0%	-3%

CX.6 Placed applicants from Northern Ireland by age group at 1 day after A level results day

Selected age groups: difference between cycle and 2014 cycle



CX.7 Placed applicants from Northern Ireland by age group at 1 day after A level results day

All age groups

Domicile of applicant	Age group	2011	2012	2013	2014	2015
Northern Ireland	17	30	40	20	20	20
	18	7,140	6,500	7,290	7,070	7,130
	19	1,830	1,500	1,810	1,840	1,800
	20 to 24	1,730	1,650	1,950	2,060	2,010
	25 and over	690	580	710	770	770

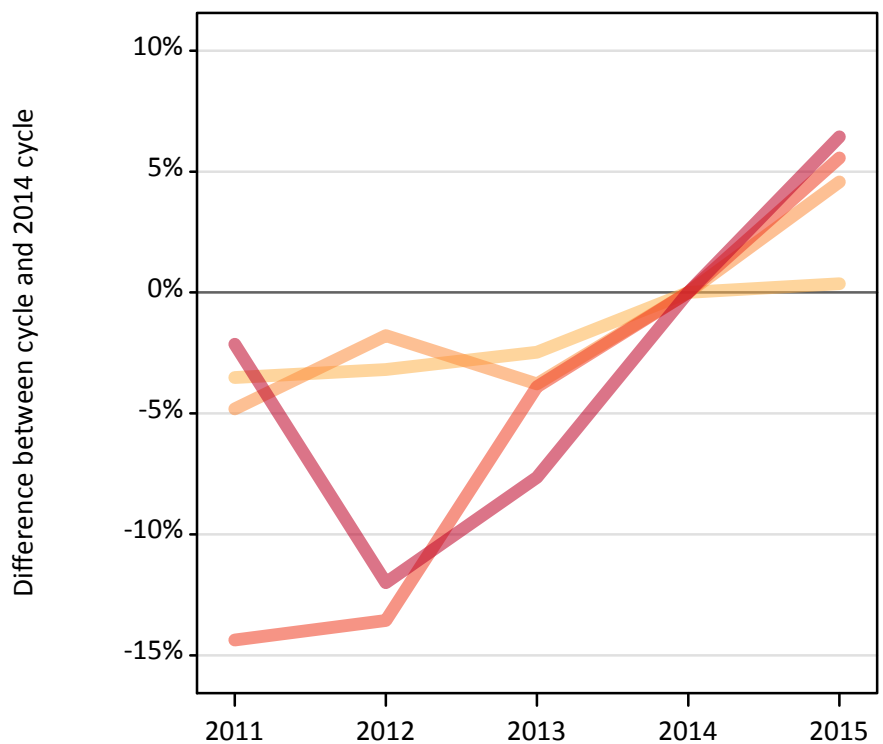
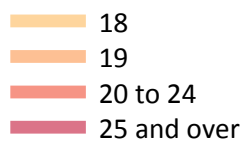
CX.8 Placed applicants from Northern Ireland by age group at 1 day after A level results day

Selected age groups: difference between cycle and 2014 cycle

Domicile of applicant	Age group	2011	2012	2013	2014	2015
Northern Ireland	18	1%	-8%	3%	0%	1%
	19	-1%	-18%	-2%	0%	-2%
	20 to 24	-16%	-20%	-5%	0%	-3%
	25 and over	-11%	-24%	-8%	0%	0%

CX.9 Placed applicants from Scotland by age group at 1 day after A level results day

Selected age groups: difference between cycle and 2014 cycle



CX.10 Placed applicants from Scotland by age group at 1 day after A level results day

All age groups

Domicile of applicant	Age group	2011	2012	2013	2014	2015
Scotland	17	450	410	340	340	380
	18	13,270	13,310	13,410	13,750	13,800
	19	3,480	3,590	3,520	3,650	3,820
	20 to 24	5,200	5,250	5,840	6,070	6,410
	25 and over	3,620	3,260	3,420	3,700	3,940

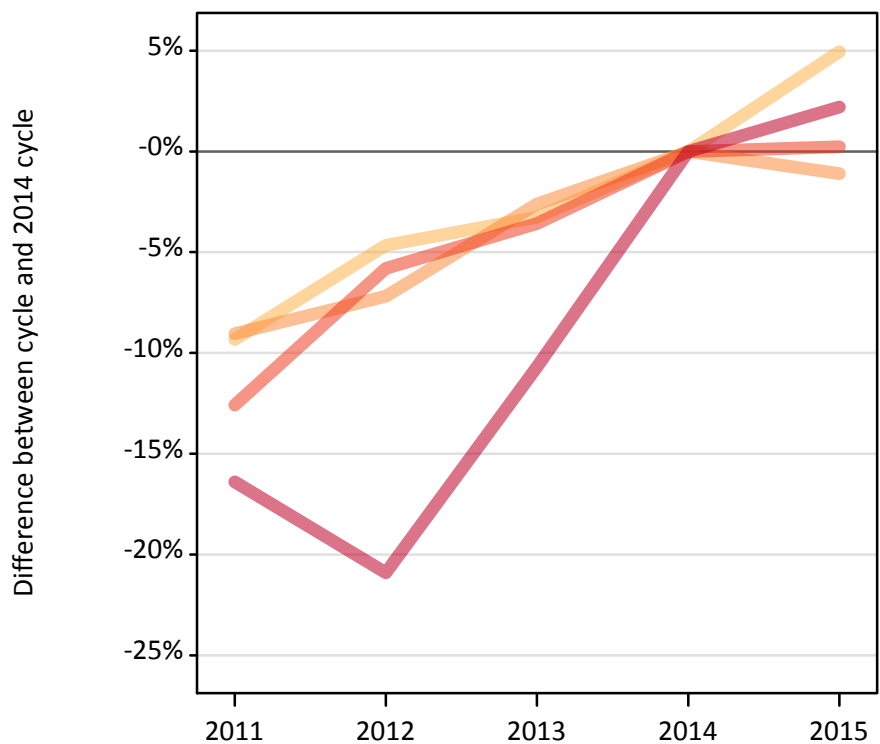
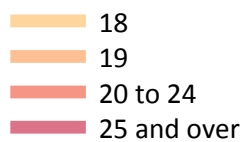
CX.11 Placed applicants from Scotland by age group at 1 day after A level results day

Selected age groups: difference between cycle and 2014 cycle

Domicile of applicant	Age group	2011	2012	2013	2014	2015
Scotland	18	-4%	-3%	-2%	0%	0%
	19	-5%	-2%	-4%	0%	5%
	20 to 24	-14%	-14%	-4%	0%	6%
	25 and over	-2%	-12%	-8%	0%	6%

CX.12 Placed applicants from Wales by age group at 1 day after A level results day

Selected age groups: difference between cycle and 2014 cycle



CX.13 Placed applicants from Wales by age group at 1 day after A level results day

All age groups

Domicile of applicant	Age group	2011	2012	2013	2014	2015
Wales	17	30	20	30	20	10
	18	8,190	8,610	8,740	9,030	9,480
	19	2,970	3,030	3,180	3,260	3,220
	20 to 24	2,290	2,470	2,530	2,620	2,630
	25 and over	1,410	1,330	1,500	1,680	1,720

CX.14 Placed applicants from Wales by age group at 1 day after A level results day

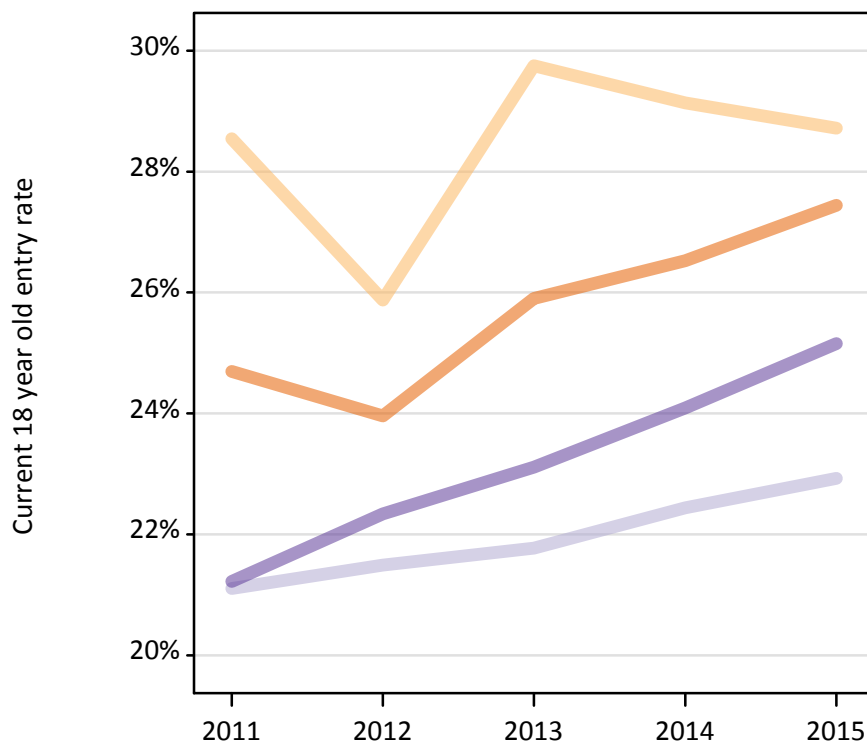
Selected age groups: difference between cycle and 2014 cycle

Domicile of applicant	Age group	2011	2012	2013	2014	2015
Wales	18	-9%	-5%	-3%	0%	5%
	19	-9%	-7%	-3%	0%	-1%
	20 to 24	-13%	-6%	-4%	0%	0%
	25 and over	-16%	-21%	-11%	0%	2%

CX.15 Entry rates for 18 year olds by UK country of domicile: 1 day after A level results day

Placed 18 year old applicants as a proportion of the 18 year old population

- England
- Northern Ireland
- Scotland
- Wales



CX.16 Entry rates for 18 year olds by UK country of domicile: 1 day after A level results day

Placed 18 year old applicants as a proportion of the 18 year old population

Domicile of applicant	Age group	2011	2012	2013	2014	2015
England	18	24.7%	24.0%	25.9%	26.5%	27.4%
Northern Ireland	18	28.5%	25.9%	29.7%	29.1%	28.7%
Scotland	18	21.1%	21.5%	21.8%	22.4%	22.9%
Wales	18	21.2%	22.3%	23.1%	24.1%	25.2%