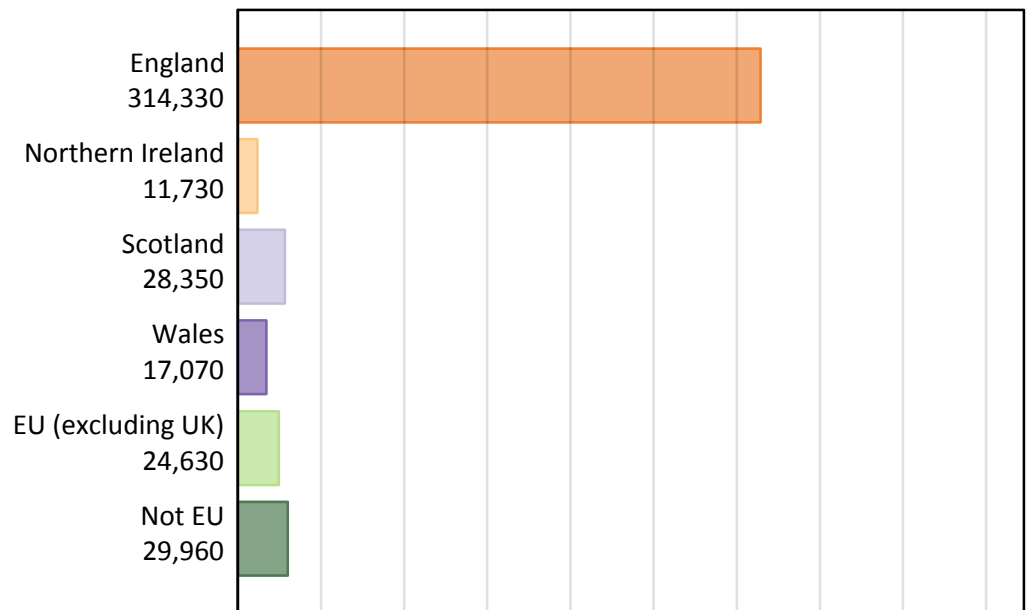


**Analysis at 00:05 on Friday 14 August 2015 (1 day after A level results day - No Scot.X1)**

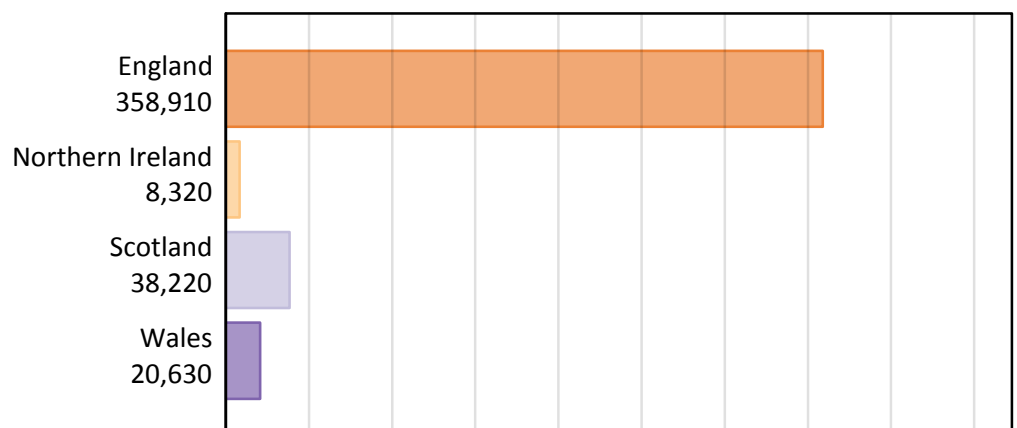
**BX.1 Placed applicants by country of provider and domicile, 2015 cycle**

Domicile of applicant	Country of provider				
	England	Northern Ireland	Scotland	Wales	UK
England	300,750	500	4,160	8,930	314,330
Northern Ireland	3,380	7,320	900	130	11,730
Scotland	1,430	20	26,860	40	28,350
Wales	7,440	10	100	9,510	17,070
EU (excluding UK)	19,380	340	3,840	1,060	24,630
Not EU	26,520	130	2,360	950	29,960
All	358,910	8,320	38,220	20,630	426,070

**BX.2 Placed applicants by domicile group**

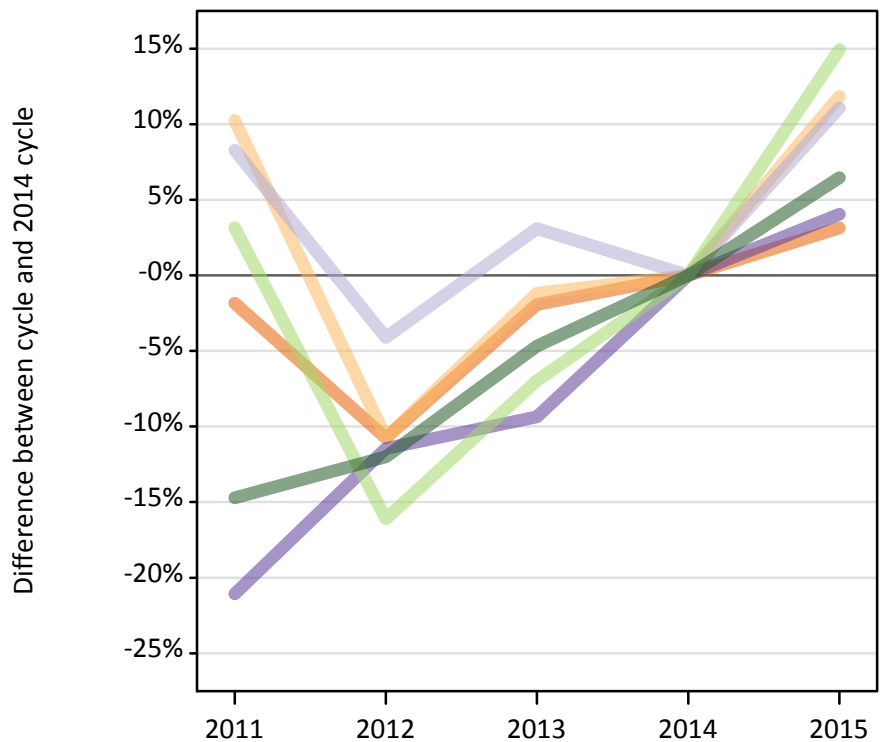
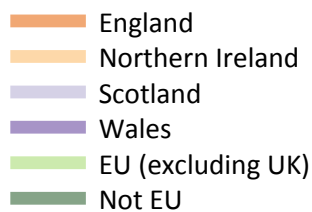


**BX.3 Placed applicants by country of provider**



#### BX.4 Placed applicants at 1 day after A level results day: providers in England

Selected applicant domiciles: difference between cycle and 2014 cycle (at 1 day after A level results day)



#### BX.5 Placed applicants at 1 day after A level results day: providers in England

Placed applicants by domicile (at 1 day after A level results day)

Domicile of applicant	2011	2012	2013	2014	2015
England	286,240	260,210	285,960	291,580	300,750
Northern Ireland	3,330	2,700	2,990	3,020	3,380
Scotland	1,400	1,240	1,330	1,290	1,430
Wales	5,650	6,340	6,480	7,150	7,440
EU (excluding UK)	17,400	14,150	15,690	16,870	19,380
Not EU	21,240	21,920	23,740	24,910	26,520

#### BX.6 Placed applicants at 1 day after A level results day: providers in England

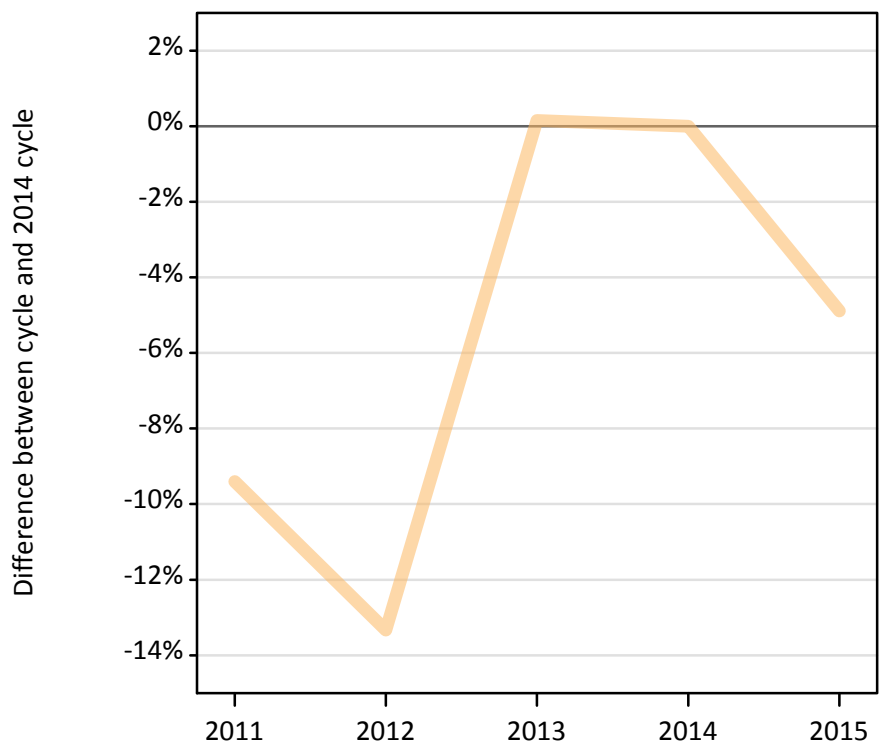
Selected applicant domiciles: difference between cycle and 2014 cycle (at 1 day after A level results day)

Domicile of applicant	2011	2012	2013	2014	2015
England	-2%	-11%	-2%	0%	3%
Northern Ireland	10%	-11%	-1%	0%	12%
Scotland	8%	-4%	3%	0%	11%
Wales	-21%	-11%	-9%	0%	4%
EU (excluding UK)	3%	-16%	-7%	0%	15%
Not EU	-15%	-12%	-5%	0%	6%

**BX.7 Placed applicants at 1 day after A level results day: providers in Northern Ireland**

Selected applicant domiciles: difference between cycle and 2014 cycle (at 1 day after A level results day)

Northern Ireland

**BX.8 Placed applicants at 1 day after A level results day: providers in Northern Ireland**

Placed applicants by domicile (at 1 day after A level results day)

Domicile of applicant	2011	2012	2013	2014	2015
England	200	180	210	290	500
Northern Ireland	6,970	6,670	7,710	7,700	7,320
Scotland	20	20	10	20	20
Wales	10	0	0	10	10
EU (excluding UK)	380	360	400	410	340
Not EU	100	140	160	160	130

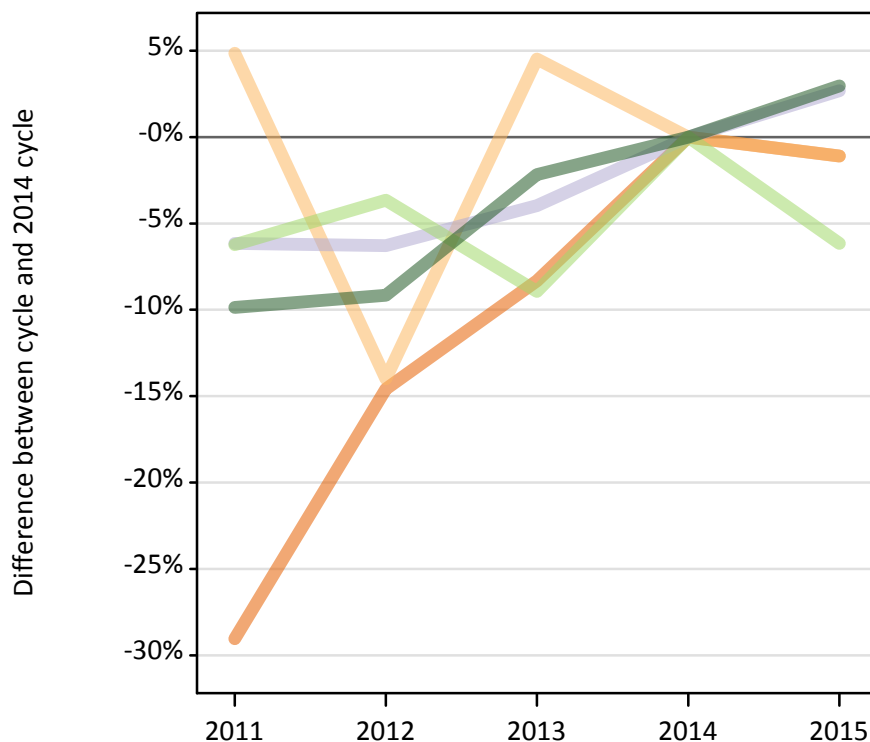
**BX.9 Placed applicants at 1 day after A level results day: providers in Northern Ireland**

Selected applicant domiciles: difference between cycle and 2014 cycle (at 1 day after A level results day)

Domicile of applicant	2011	2012	2013	2014	2015
Northern Ireland	-9%	-13%	0%	0%	-5%

### BX.10 Placed applicants at 1 day after A level results day: providers in Scotland

Selected applicant domiciles: difference between cycle and 2014 cycle (at 1 day after A level results day)



### BX.11 Placed applicants at 1 day after A level results day: providers in Scotland

Placed applicants by domicile (at 1 day after A level results day)

Domicile of applicant	2011	2012	2013	2014	2015
England	2,980	3,590	3,850	4,200	4,160
Northern Ireland	950	780	950	910	900
Scotland	24,550	24,510	25,120	26,160	26,860
Wales	80	100	100	100	100
EU (excluding UK)	3,840	3,950	3,730	4,100	3,840
Not EU	2,070	2,080	2,240	2,290	2,360

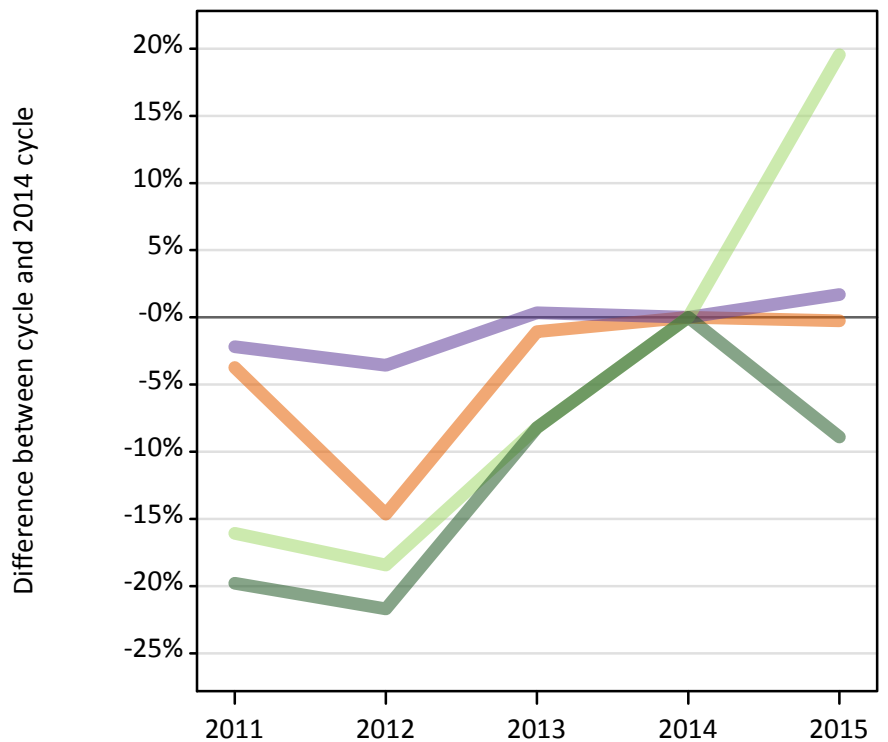
### BX.12 Placed applicants at 1 day after A level results day: providers in Scotland

Selected applicant domiciles: difference between cycle and 2014 cycle (at 1 day after A level results day)

Domicile of applicant	2011	2012	2013	2014	2015
England	-29%	-15%	-8%	0%	-1%
Northern Ireland	5%	-14%	5%	0%	-1%
Scotland	-6%	-6%	-4%	0%	3%
EU (excluding UK)	-6%	-4%	-9%	0%	-6%
Not EU	-10%	-9%	-2%	0%	3%

### BX.13 Placed applicants at 1 day after A level results day: providers in Wales

Selected applicant domiciles: difference between cycle and 2014 cycle (at 1 day after A level results day)



### BX.14 Placed applicants at 1 day after A level results day: providers in Wales

Placed applicants by domicile (at 1 day after A level results day)

Domicile of applicant	2011	2012	2013	2014	2015
England	8,610	7,640	8,850	8,950	8,930
Northern Ireland	160	120	140	130	130
Scotland	50	40	60	50	40
Wales	9,150	9,020	9,390	9,360	9,510
EU (excluding UK)	750	730	820	890	1,060
Not EU	840	820	960	1,050	950

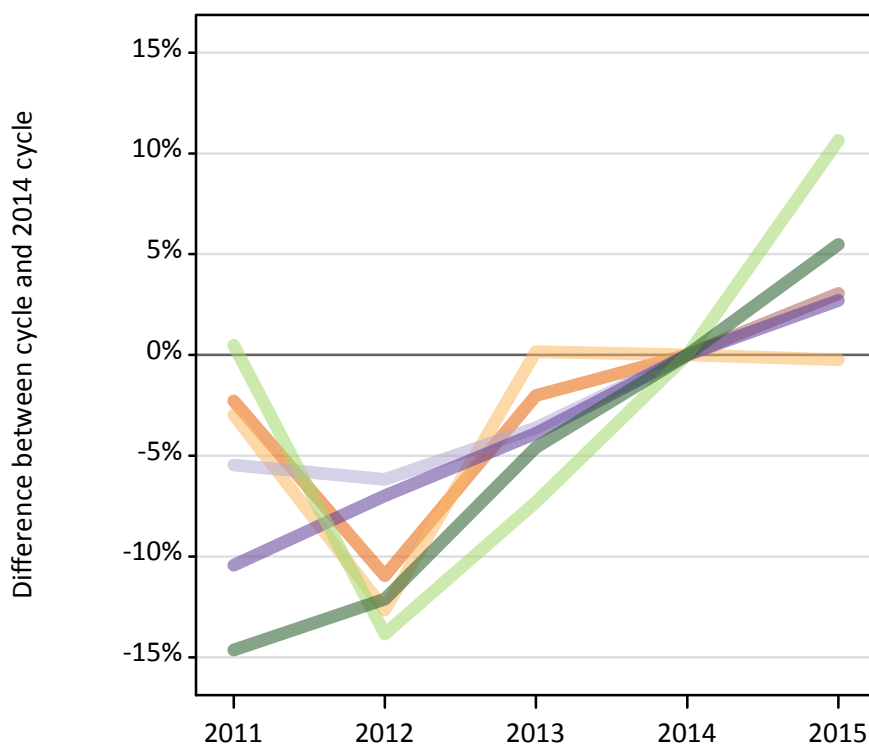
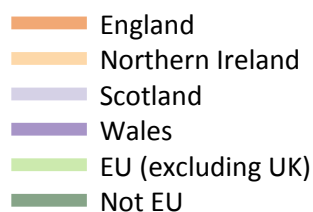
### BX.15 Placed applicants at 1 day after A level results day: providers in Wales

Selected applicant domiciles: difference between cycle and 2014 cycle (at 1 day after A level results day)

Domicile of applicant	2011	2012	2013	2014	2015
England	-4%	-15%	-1%	0%	-0%
Wales	-2%	-4%	0%	0%	2%
EU (excluding UK)	-16%	-18%	-8%	0%	20%
Not EU	-20%	-22%	-8%	0%	-9%

**BX.16 Placed applicants at 1 day after A level results day: providers in the UK**

Selected applicant domiciles: difference between cycle and 2014 cycle (at 1 day after A level results day)



**BX.17 Placed applicants at 1 day after A level results day: providers in the UK**

Placed applicants by domicile (at 1 day after A level results day)

Domicile of applicant	2011	2012	2013	2014	2015
England	298,030	271,620	298,870	305,020	314,330
Northern Ireland	11,410	10,270	11,780	11,760	11,730
Scotland	26,010	25,820	26,520	27,510	28,350
Wales	14,880	15,460	15,970	16,620	17,070
EU (excluding UK)	22,370	19,180	20,640	22,260	24,630
Not EU	24,250	24,960	27,100	28,400	29,960

**BX.18 Placed applicants at 1 day after A level results day: providers in the UK**

Selected applicant domiciles: difference between cycle and 2014 cycle (at 1 day after A level results day)

Domicile of applicant	2011	2012	2013	2014	2015
England	-2%	-11%	-2%	0%	3%
Northern Ireland	-3%	-13%	0%	0%	-0%
Scotland	-5%	-6%	-4%	0%	3%
Wales	-10%	-7%	-4%	0%	3%
EU (excluding UK)	0%	-14%	-7%	0%	11%
Not EU	-15%	-12%	-5%	0%	5%