

Daily Clearing Analysis: Region

Analysis at 00:05 on Thursday 13 August 2015 (A level results day)

R.1 Placed applicants by region of domicile: A level results day

Placed applicants: change relative to 2014 cycle totals

- North East
- North West
- Yorkshire and The Humber
- East Midlands
- West Midlands
- East of England
- London
- South East
- South West



R.2 Placed applicants by region of domicile: A level results day

Applicant Status	Domicile	2011	2012	2013	2014	2015
Placed	North East	13,020	11,700	13,190	12,790	13,440
	North West	39,930	36,540	39,250	39,890	40,130
	Yorkshire and The Humber	26,940	24,730	27,050	27,630	28,320
	East Midlands	22,500	20,690	22,880	23,630	23,230
	West Midlands	29,130	27,700	30,810	31,720	32,480
	East of England	30,530	27,960	30,600	31,040	31,620
	London	46,430	43,230	47,910	49,510	53,110
	South East	47,830	43,570	46,920	48,210	49,710
	South West	27,660	24,450	27,470	28,240	28,590
	(England total)	283,970	260,570	286,070	292,650	300,630
	Scotland	26,380	26,220	26,910	27,910	30,570
	Northern Ireland	10,810	9,690	11,280	11,110	11,260
	Wales	14,180	14,910	15,240	15,980	16,220
	UK	335,340	311,390	339,500	347,650	358,680

R.3 Placed applicants by region of domicile: A level results day

Placed applicants: change relative to 2014 cycle totals

Applicant Status	Domicile	2011	2012	2013	2014	2015
Placed	North East	2%	-9%	3%	0%	5%
	North West	0%	-8%	-2%	0%	1%
	Yorkshire and The Humber	-2%	-10%	-2%	0%	3%
	East Midlands	-5%	-12%	-3%	0%	-2%
	West Midlands	-8%	-13%	-3%	0%	2%
	East of England	-2%	-10%	-1%	0%	2%
	London	-6%	-13%	-3%	0%	7%
	South East	-1%	-10%	-3%	0%	3%
	South West	-2%	-13%	-3%	0%	1%
	(England total)	-3%	-11%	-2%	0%	3%
	Scotland	-5%	-6%	-4%	0%	10%
	Northern Ireland	-3%	-13%	2%	0%	1%
	Wales	-11%	-7%	-5%	0%	1%
	UK	-4%	-10%	-2%	0%	3%

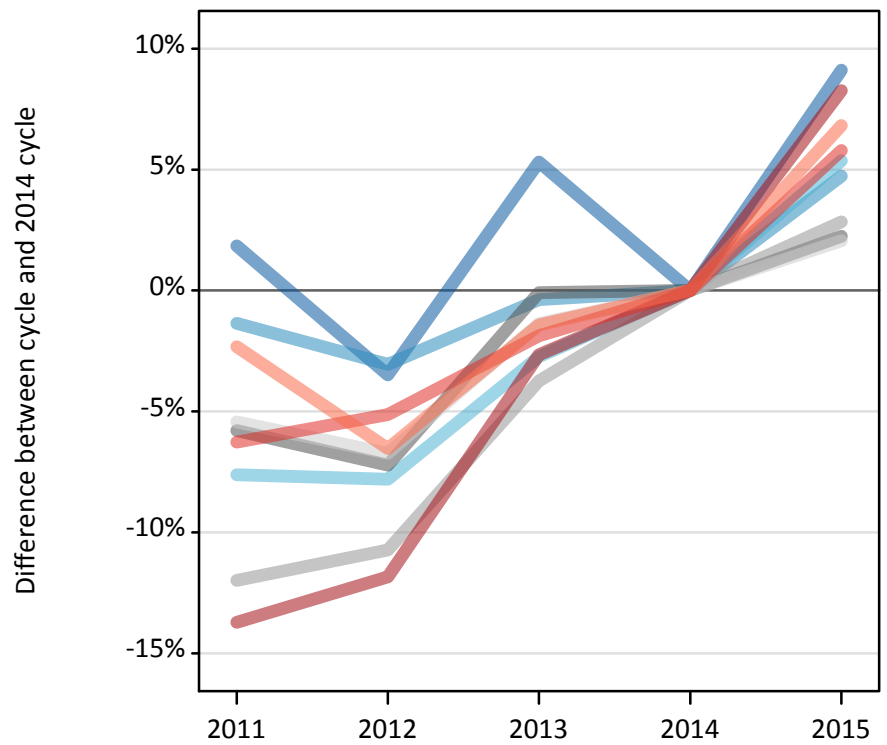
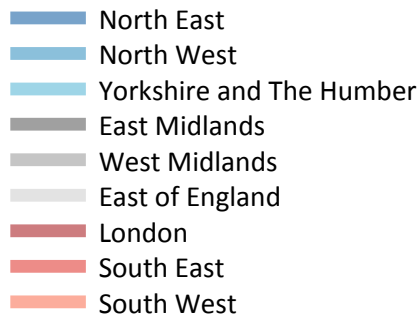
R.4 Placed applicants by region of domicile: A level results day

Placed applicants: absolute change relative to 2014 cycle totals

Applicant Status	Domicile	2011	2012	2013	2014	2015
Placed	North East	230	-1,090	400	0	650
	North West	40	-3,350	-640	0	240
	Yorkshire and The Humber	-690	-2,890	-570	0	700
	East Midlands	-1,140	-2,940	-750	0	-400
	West Midlands	-2,580	-4,020	-910	0	770
	East of England	-510	-3,090	-440	0	570
	London	-3,080	-6,280	-1,600	0	3,600
	South East	-370	-4,630	-1,290	0	1,510
	South West	-580	-3,790	-770	0	350
	(England total)	-8,680	-32,080	-6,580	0	7,980
	Scotland	-1,520	-1,690	-990	0	2,660
	Northern Ireland	-300	-1,420	170	0	150
	Wales	-1,810	-1,080	-750	0	240
	UK	-12,310	-36,260	-8,150	0	11,030

R.5 Placed 18 year old applicants by region of domicile: A level results day

Placed 18 year old applicants: change relative to 2014 cycle totals



R.6 Placed 18 year old applicants by region of domicile: A level results day

Applicant Status	Domicile	2011	2012	2013	2014	2015
Placed	North East	6,690	6,340	6,910	6,570	7,160
	North West	21,620	21,250	21,840	21,920	22,960
	Yorkshire and The Humber	14,160	14,130	14,910	15,330	16,150
	East Midlands	12,170	11,980	12,900	12,920	13,210
	West Midlands	15,260	15,480	16,690	17,340	17,830
	East of England	17,340	17,100	18,090	18,340	18,710
	London	21,860	22,330	24,660	25,330	27,420
	South East	25,610	25,920	26,810	27,320	28,900
	South West	13,750	13,160	13,880	14,080	15,040
	(England total)	148,450	147,700	156,690	159,140	167,390
	Scotland	13,550	13,630	13,740	14,070	14,130
	Northern Ireland	6,660	6,030	6,930	6,620	6,740
	Wales	7,680	8,280	8,310	8,640	8,980
	UK	176,350	175,640	185,670	188,460	197,240

R.7 Placed 18 year old applicants by region of domicile: A level results day

Placed 18 year old applicants: change relative to 2014 cycle totals

Applicant Status	Domicile	2011	2012	2013	2014	2015
Placed	North East	2%	-3%	5%	0%	9%
	North West	-1%	-3%	-0%	0%	5%
	Yorkshire and The Humber	-8%	-8%	-3%	0%	5%
	East Midlands	-6%	-7%	-0%	0%	2%
	West Midlands	-12%	-11%	-4%	0%	3%
	East of England	-5%	-7%	-1%	0%	2%
	London	-14%	-12%	-3%	0%	8%
	South East	-6%	-5%	-2%	0%	6%
	South West	-2%	-7%	-1%	0%	7%
	(England total)	-7%	-7%	-2%	0%	5%
	Scotland	-4%	-3%	-2%	0%	0%
	Northern Ireland	1%	-9%	5%	0%	2%
	Wales	-11%	-4%	-4%	0%	4%
	UK	-6%	-7%	-1%	0%	5%

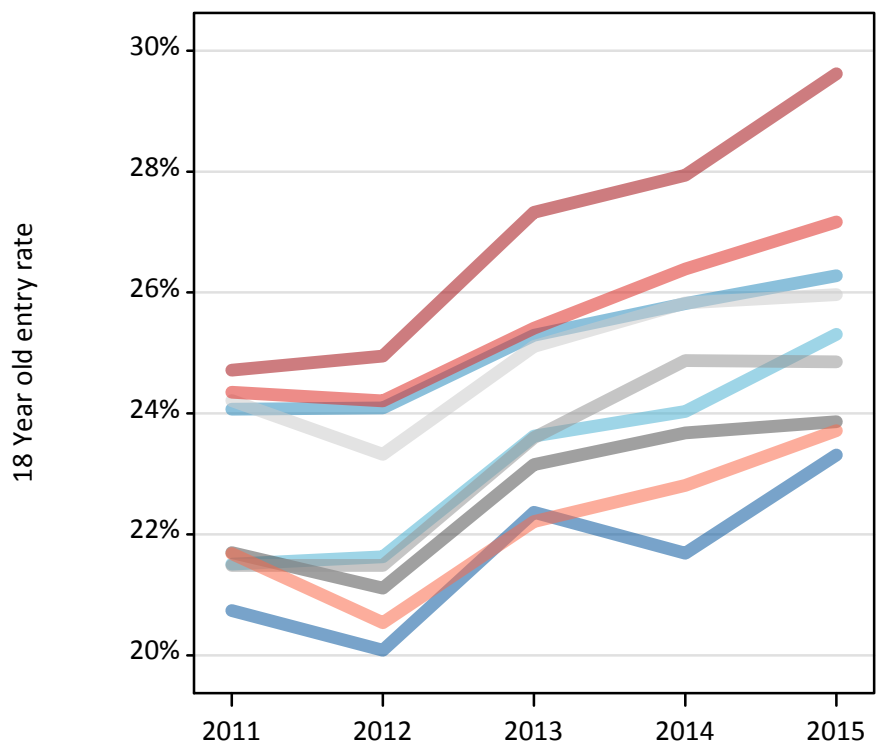
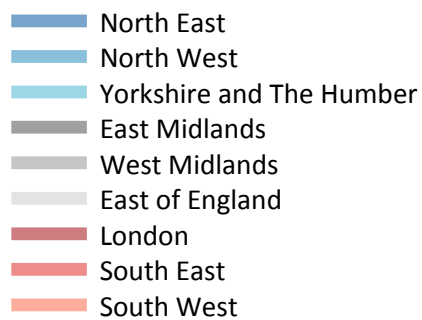
R.8 Placed 18 year old applicants by region of domicile: A level results day

Placed 18 year old applicants: absolute change relative to 2014 cycle totals

Applicant Status	Domicile	2011	2012	2013	2014	2015
Placed	North East	120	-230	350	0	600
	North West	-300	-670	-80	0	1,040
	Yorkshire and The Humber	-1,170	-1,200	-420	0	820
	East Midlands	-750	-930	-10	0	290
	West Midlands	-2,080	-1,860	-650	0	490
	East of England	-1,000	-1,230	-250	0	380
	London	-3,480	-3,000	-670	0	2,090
	South East	-1,710	-1,400	-510	0	1,580
	South West	-330	-920	-200	0	960
	(England total)	-10,680	-11,440	-2,450	0	8,250
	Scotland	-520	-440	-330	0	70
	Northern Ireland	40	-590	310	0	110
	Wales	-960	-360	-330	0	340
	UK	-12,120	-12,820	-2,800	0	8,780

R.9 Placed 18 year old applicants by region of domicile: A level results day

Placed 18 year old applicants: entry rate



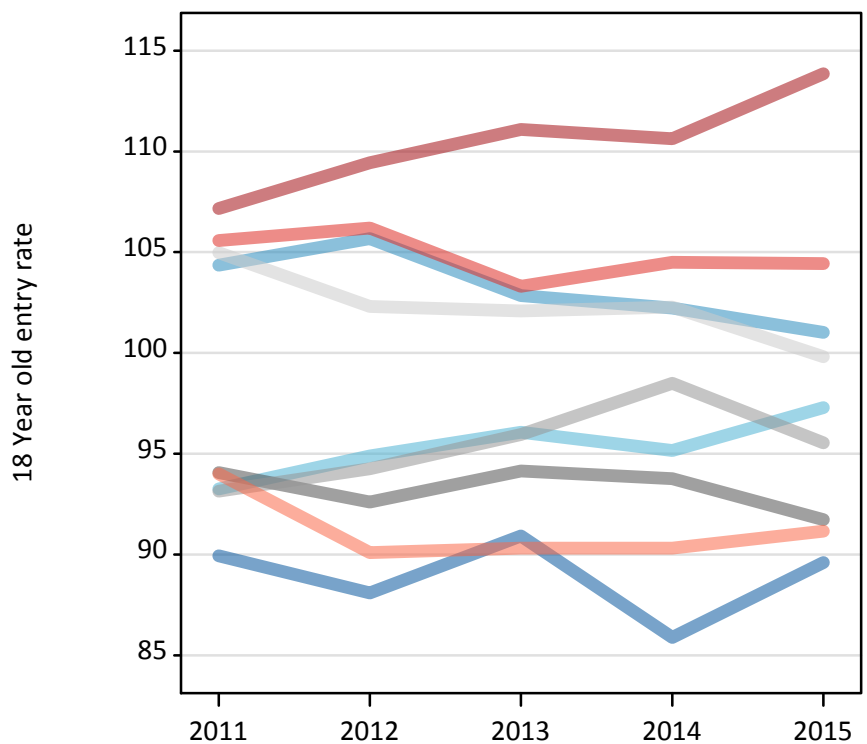
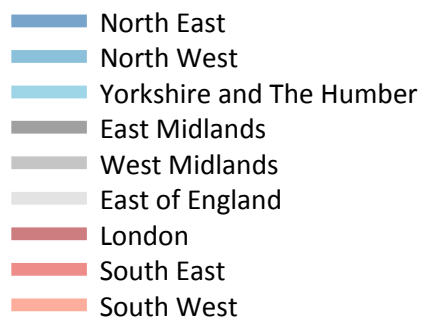
R.10 Placed 18 year old applicants by region of domicile: A level results day

Placed 18 year old applicants: entry rate

Applicant Status	Domicile	2011	2012	2013	2014	2015
Placed	North East	20.7%	20.1%	22.4%	21.7%	23.3%
	North West	24.1%	24.1%	25.3%	25.8%	26.3%
	Yorkshire and The Humber	21.5%	21.6%	23.6%	24.0%	25.3%
	East Midlands	21.7%	21.1%	23.2%	23.7%	23.9%
	West Midlands	21.5%	21.5%	23.6%	24.9%	24.9%
	East of England	24.2%	23.3%	25.1%	25.8%	26.0%
	London	24.7%	24.9%	27.3%	27.9%	29.6%
	South East	24.4%	24.2%	25.4%	26.4%	27.2%
	South West	21.7%	20.5%	22.2%	22.8%	23.7%
	(England total)	23.1%	22.8%	24.6%	25.3%	26.0%
	Scotland	21.6%	22.0%	22.3%	23.0%	23.5%
	Northern Ireland	26.6%	24.0%	28.3%	27.3%	27.1%
	Wales	19.9%	21.5%	22.0%	23.0%	23.8%
	UK	22.9%	22.7%	24.4%	25.0%	25.7%

R.11 Placed 18 year old applicants by region of domicile: A level results day

Placed 18 year old applicants: entry rates (indexed to 100 = England)



R.12 Placed 18 year old applicants by region of domicile: A level results day

Placed 18 year old applicants: entry rate (indexed to 100 = England)

Applicant Status	Domicile	2011	2012	2013	2014	2015
Placed	North East	90	88	91	86	90
	North West	104	106	103	102	101
	Yorkshire and The Humber	93	95	96	95	97
	East Midlands	94	93	94	94	92
	West Midlands	93	94	96	98	96
	East of England	105	102	102	102	100
	London	107	109	111	111	114
	South East	106	106	103	104	104
	South West	94	90	90	90	91
	(England total)	100	100	100	100	100