

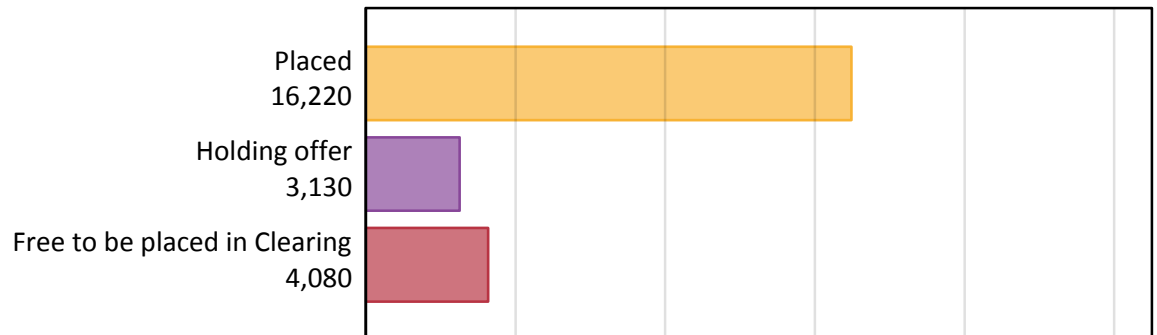
Daily Clearing Analysis: Overview

Analysis at 00:05 on Thursday 13 August 2015 (A level results day - No Scot.X1)

AX.1 Applicants by type and status from Wales, 2015 cycle

Applicant type	Status	2015
Main scheme	Placed (Clearing)	90
	Placed (Adjustment)	0
	Placed (Firm)	14,740
	Placed (Insurance)	870
	Placed (Other)	430
	Holding offer	3,130
	Free to be placed in Clearing	4,080
Direct to Clearing	Placed (Direct to Clearing)	80
	Other (Direct to Clearing)	290
All applicants	Placed	16,220

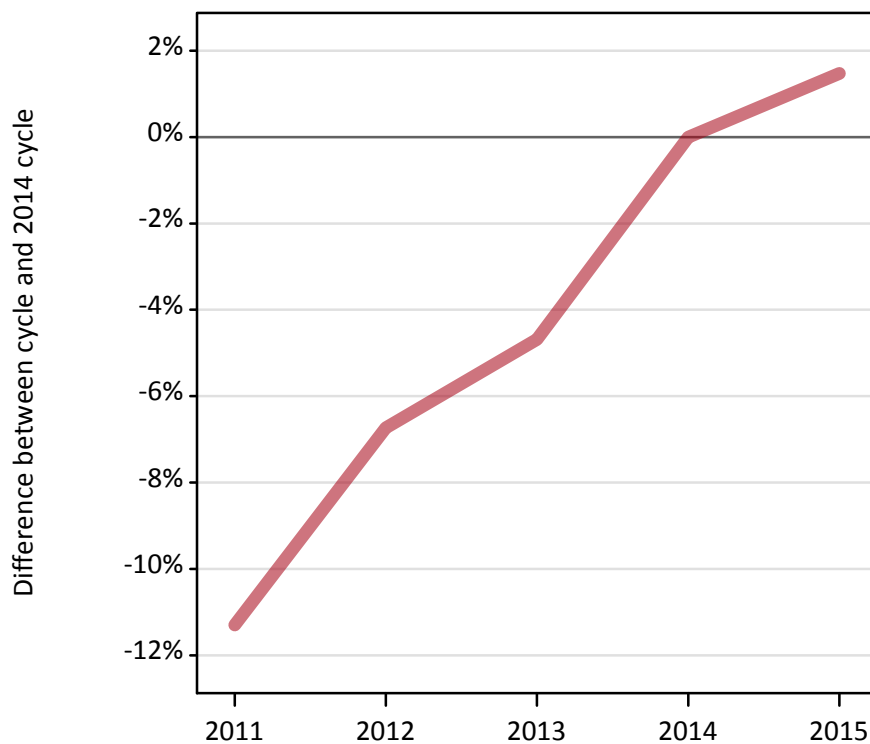
AX.2 Summary of applicants who are placed, holding offers or free to be placed in Clearing (Wales)



AX.3 All placed applicants from Wales: A level results day

All placed applicants: difference between cycle and 2014 cycle

Placed



AX.4 All placed applicants from Wales: A level results day

All placed applicants: applicants at A level results day

Applicant type	Status	2011	2012	2013	2014	2015
All applicants	Placed	14,180	14,910	15,240	15,980	16,220

AX.5 All placed applicants from Wales: A level results day

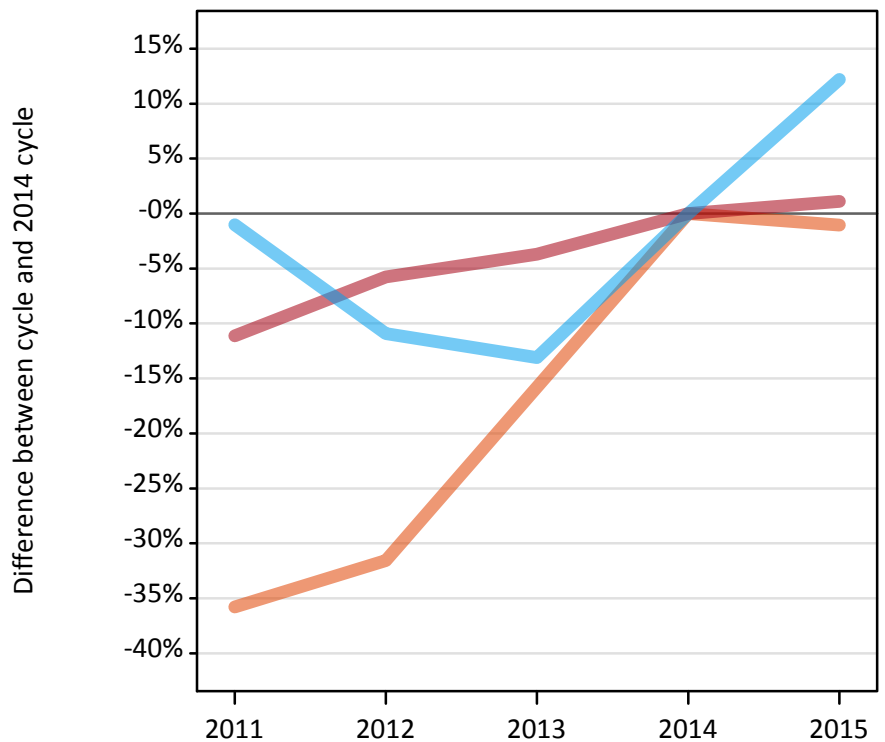
All placed applicants: difference between cycle and 2014 cycle

Applicant type	Status	2011	2012	2013	2014	2015
All applicants	Placed	-11%	-7%	-5%	0%	1%

AX.6 Placed main scheme applicants from Wales: A level results day

Selected placed routes: difference between cycle and 2014 cycle

- Placed (Clearing)
- Placed (Firm)
- Placed (Insurance)



AX.7 Placed main scheme applicants from Wales: A level results day

All Main scheme placed routes (excluding Adjustment): applicants at A level results day

Applicant type	Status	2011	2012	2013	2014	2015
Main scheme	Placed (Clearing)	60	70	80	100	90
	Placed (Firm)	12,960	13,740	14,040	14,580	14,740
	Placed (Insurance)	770	690	680	780	870
	Placed (Other)	340	330	360	440	430

AX.8 Placed main scheme applicants from Wales: A level results day

Selected placed routes: difference between cycle and 2014 cycle

Applicant type	Status	2011	2012	2013	2014	2015
Main scheme	Placed (Clearing)	-36%	-32%	-16%	0%	-1%
	Placed (Firm)	-11%	-6%	-4%	0%	1%
	Placed (Insurance)	-1%	-11%	-13%	0%	12%

AX.9 Main scheme applicants placed through adjustment: A level results day

Placed through adjustment: difference between cycle and 2014 cycle

[Analysis on placed by adjustment available from 14 August 2015]

AX.10 Main scheme applicants placed through adjustment: A level results day

Placed through adjustment: applicants at A level results day

[Analysis on placed by adjustment available from 14 August 2015]

AX.11 Main scheme applicants placed through adjustment: A level results day

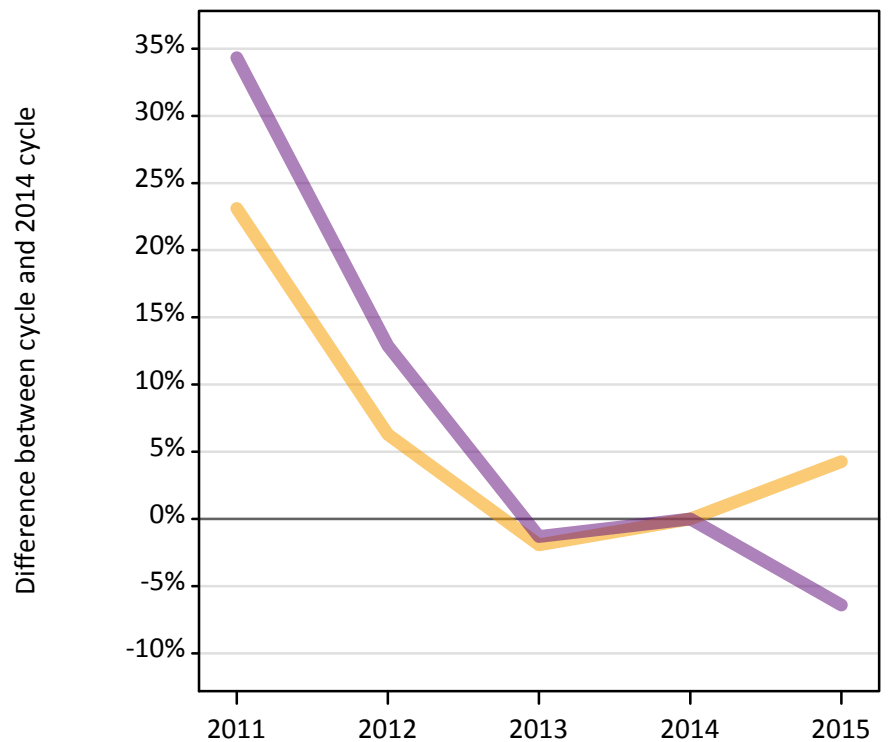
Placed through adjustment: difference between cycle and 2014 cycle

[Analysis on placed by adjustment available from 14 August 2015]

AX.12 Main scheme applicants not currently placed from Wales: A level results day

Applicants in unplaced states: difference between cycle and 2014 cycle

— Holding offer
— Free to be placed in Clearing



AX.13 Main scheme applicants not currently placed from Wales: A level results day

Applicants in unplaced states: applicants at A level results day

Applicant type	Status	2011	2012	2013	2014	2015
Main scheme	Holding offer	3,690	3,190	2,940	3,000	3,130
	Free to be placed in Clearing	5,860	4,920	4,310	4,360	4,080

AX.14 Main scheme applicants not currently placed from Wales: A level results day

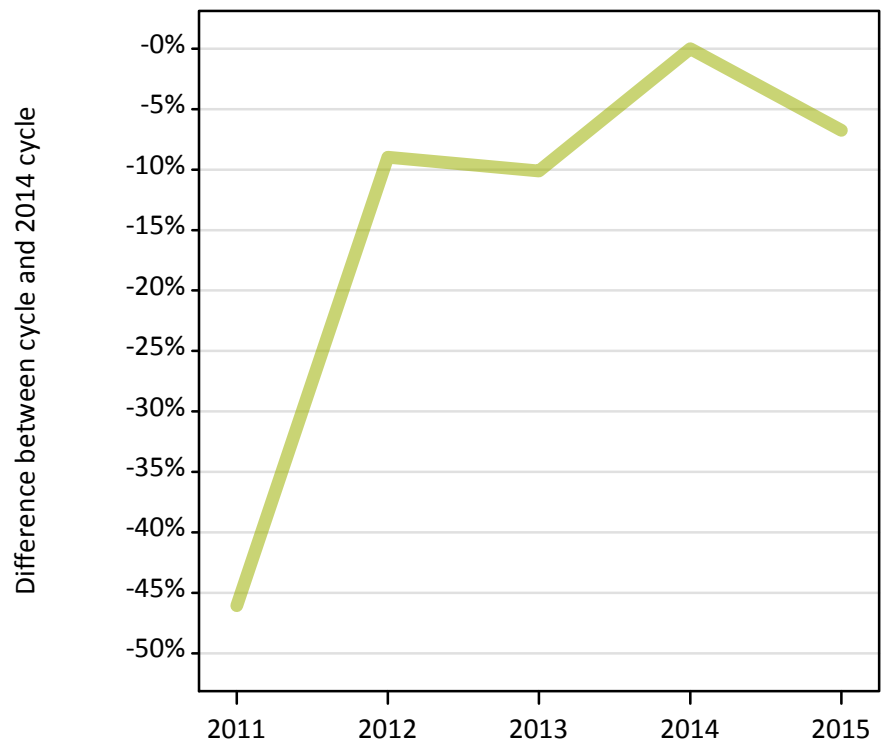
Applicants in unplaced states: difference between cycle and 2014 cycle

Applicant type	Status	2011	2012	2013	2014	2015
Main scheme	Holding offer	23%	6%	-2%	0%	4%
	Free to be placed in Clearing	34%	13%	-1%	0%	-6%

AX.15 Direct to Clearing applicants from Wales: A level results day

Placed (Direct to Clearing): difference between cycle and 2014 cycle

Placed (Direct to Clearing)



AX.16 Direct to Clearing applicants from Wales: A level results day

Direct to Clearing A level results day

Applicant type	Status	2011	2012	2013	2014	2015
Direct to Clearing	Placed (Direct to Clearing)	50	80	80	90	80
	Other (Direct to Clearing)	240	250	250	270	290

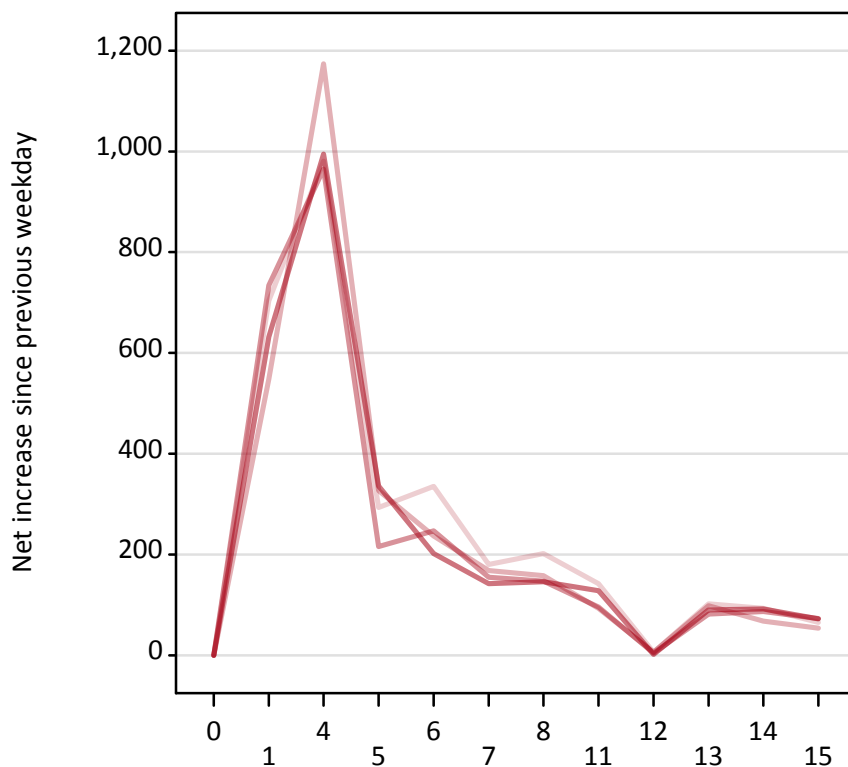
AX.17 Direct to Clearing applicants from Wales: A level results day

Placed (Direct to Clearing): difference between cycle and 2014 cycle

Applicant type	Status	2011	2012	2013	2014	2015
Direct to Clearing	Placed (Direct to Clearing)	-46%	-9%	-10%	0%	-7%

AX.18 All Placed: Daily net change (from Wales)

Net increase since previous weekday (2015 cycle up to A level results day)



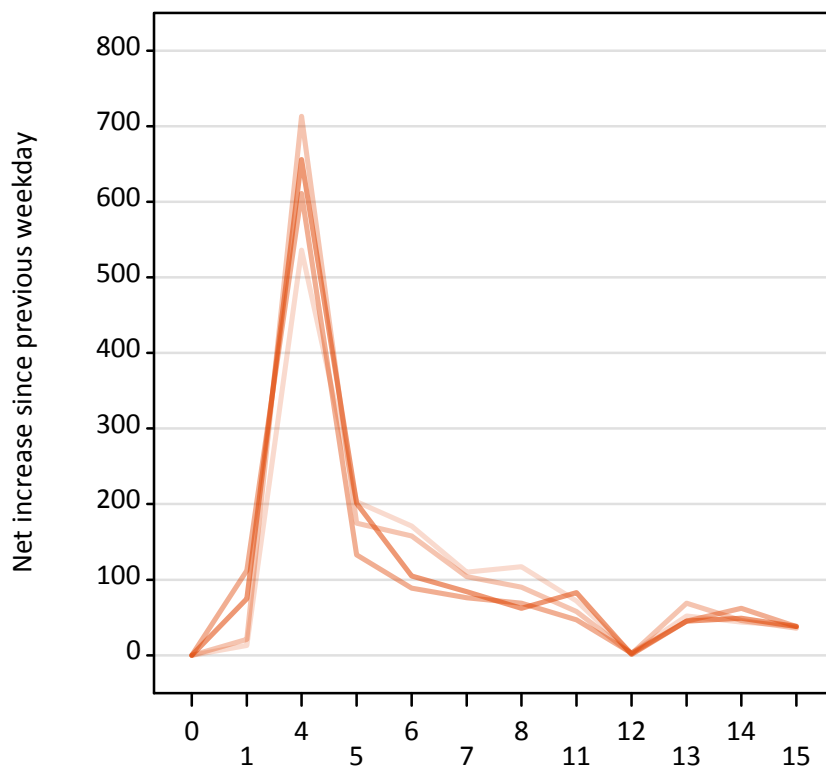
AX.19 All Placed: Daily net change (from Wales)

Net increase since previous weekday (2015 cycle up to A level results day)

Applicant status, days since A level results day		2011	2012	2013	2014	2015
All Placed	0	0	0	0	0	0
	1	700	550	730	630	
	4	980	1,170	970	1,000	
	5	290	330	220	340	
	6	340	240	250	200	
	7	180	170	160	140	
	8	200	160	150	150	
	11	140	90	100	130	
	12	10	10	0	0	
	13	100	100	80	90	
	14	90	70	90	90	
	15	70	50	70	70	

AX.20 Placed through Clearing only: Daily net change (from Wales)
 Net increase since previous weekday (2015 cycle up to A level results day)

- 2011
- 2012
- 2013
- 2014
- 2015

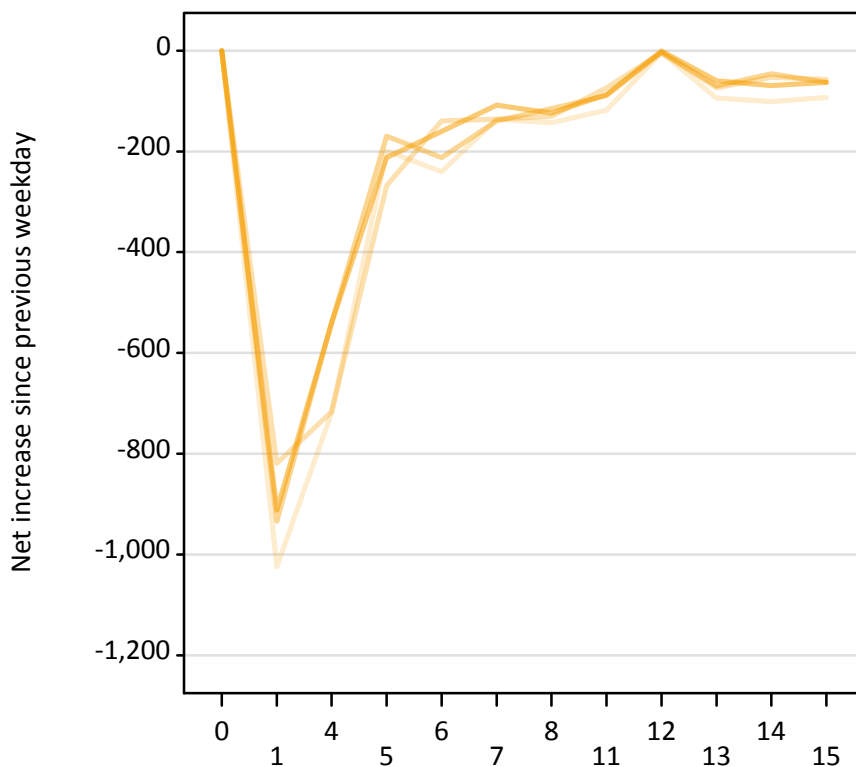


AX.21 Placed through Clearing only: Daily net change (from Wales)
 Net increase since previous weekday (2015 cycle up to A level results day)

Applicant status, days since A level results day		2011	2012	2013	2014	2015
Placed through Clearing only	0	0	0	0	0	0
	1	10	20	110	80	
	4	540	710	610	660	
	5	200	180	130	200	
	6	170	160	90	110	
	7	110	100	80	80	
	8	120	90	70	60	
	11	70	60	50	80	
	12	0	0	0	0	
	13	50	70	50	50	
	14	40	50	60	50	
	15	40	40	40	40	

AX.22 Holding Offer: Daily net change (from Wales)

Net increase since previous weekday (2015 cycle up to A level results day)



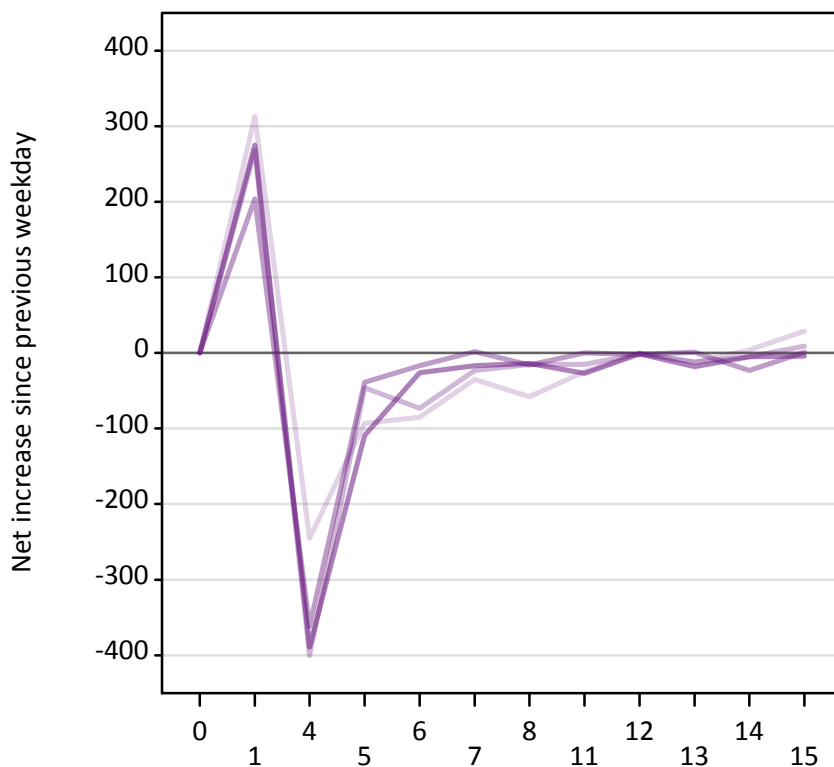
AX.23 Holding Offer: Daily net change (from Wales)

Net increase since previous weekday (2015 cycle up to A level results day)

Applicant status, days since A level results day		2011	2012	2013	2014	2015
Holding Offer	0	0	0	0	0	0
	1	-1,020	-820	-930	-910	-910
	4	-720	-720	-540	-540	-540
	5	-200	-270	-170	-210	-210
	6	-240	-140	-210	-160	-160
	7	-140	-140	-140	-110	-110
	8	-140	-130	-120	-120	-120
	11	-120	-70	-90	-90	-90
	12	0	0	0	0	0
	13	-90	-70	-70	-60	-60
	14	-100	-50	-50	-70	-70
	15	-90	-60	-60	-60	-60

AX.24 Free to be placed in Clearing: Daily net change (from Wales)
 Net increase since previous weekday (2015 cycle up to A level results day)

- 2011
- 2012
- 2013
- 2014
- 2015



AX.25 Free to be placed in Clearing: Daily net change (from Wales)
 Net increase since previous weekday (2015 cycle up to A level results day)

Applicant status, days since A level results day		2011	2012	2013	2014	2015
Free to be placed in Clearing	0	0	0	0	0	0
	1	310	270	200	280	
	4	-250	-400	-360	-390	
	5	-90	-50	-40	-110	
	6	-90	-70	-20	-30	
	7	-40	-20	0	-20	
	8	-60	-20	-20	-10	
	11	-30	-20	0	-30	
	12	0	0	0	0	
	13	-10	-10	0	-20	
	14	0	-10	-20	-10	
	15	30	10	0	0	