

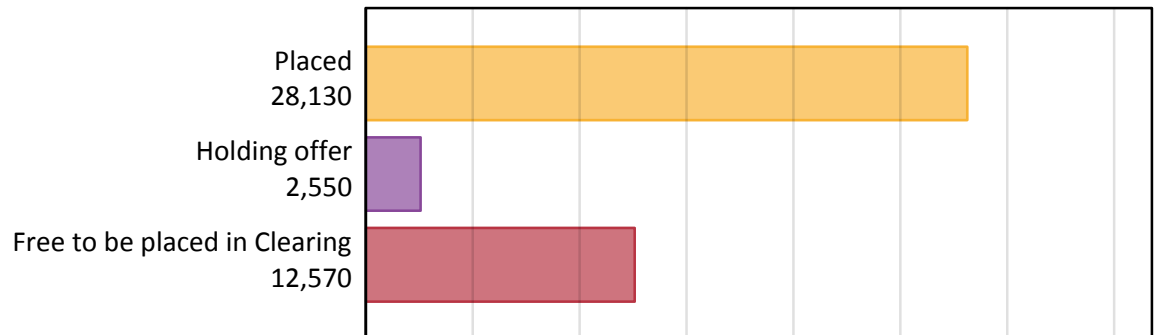
Daily Clearing Analysis: Overview

Analysis at 00:05 on Thursday 13 August 2015 (A level results day - No Scot.X1)

AX.1 Applicants by type and status from Scotland, 2015 cycle

Applicant type	Status	2015
Main scheme	Placed (Clearing)	520
	Placed (Adjustment)	0
	Placed (Firm)	25,630
	Placed (Insurance)	1,450
	Placed (Other)	460
	Holding offer	2,550
	Free to be placed in Clearing	12,570
Direct to Clearing	Placed (Direct to Clearing)	70
	Other (Direct to Clearing)	340
All applicants	Placed	28,130

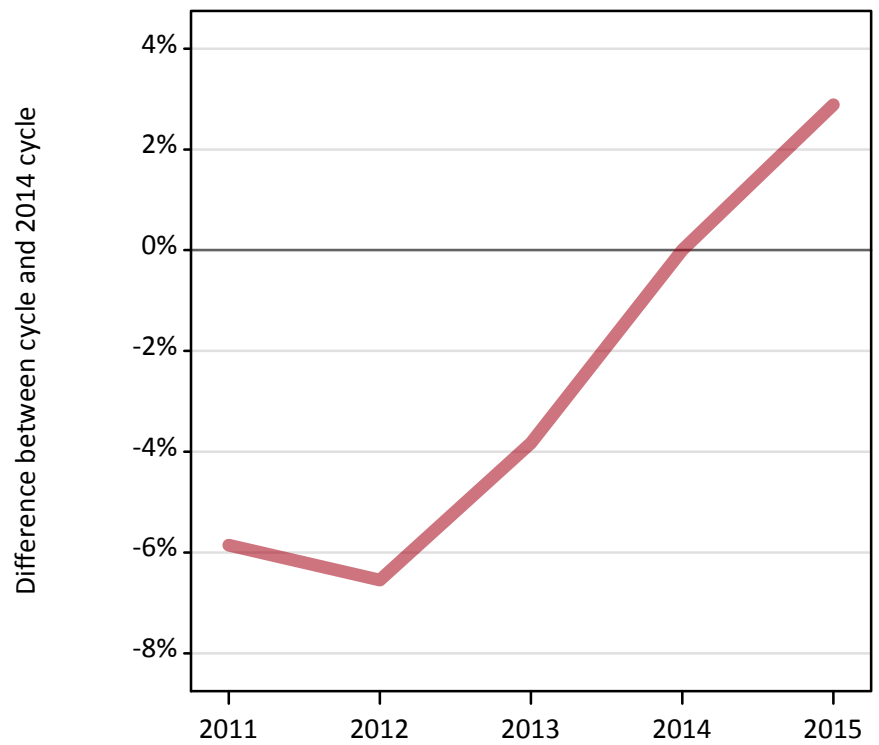
AX.2 Summary of applicants who are placed, holding offers or free to be placed in Clearing (Scotland)



AX.3 All placed applicants from Scotland: A level results day

All placed applicants: difference between cycle and 2014 cycle

Placed



AX.4 All placed applicants from Scotland: A level results day

All placed applicants: applicants at A level results day

Applicant type	Status	2011	2012	2013	2014	2015
All applicants	Placed	25,740	25,550	26,290	27,340	28,130

AX.5 All placed applicants from Scotland: A level results day

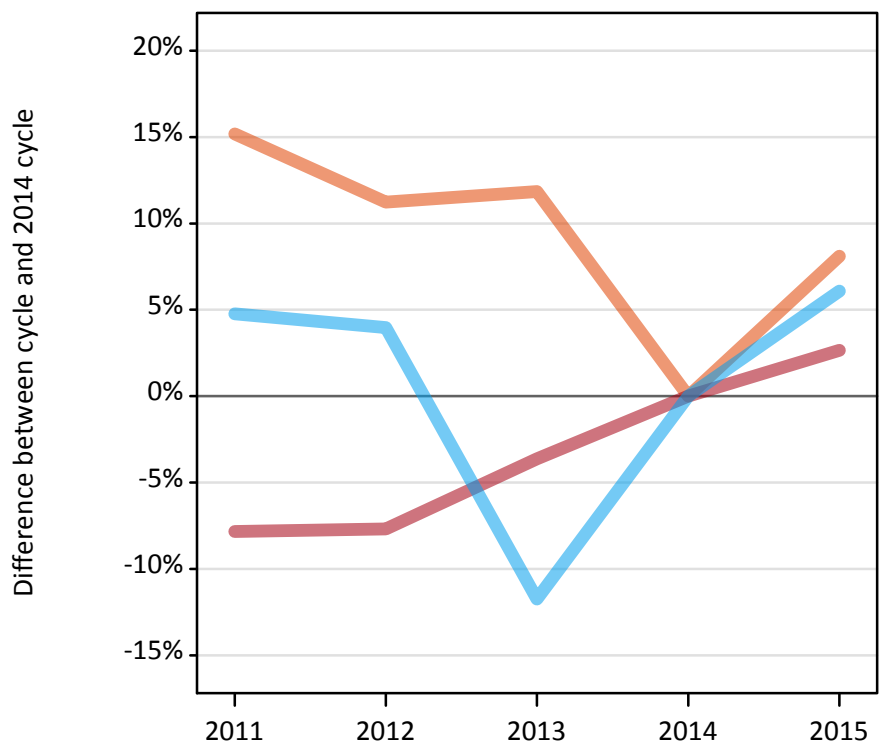
All placed applicants: difference between cycle and 2014 cycle

Applicant type	Status	2011	2012	2013	2014	2015
All applicants	Placed	-6%	-7%	-4%	0%	3%

AX.6 Placed main scheme applicants from Scotland: A level results day

Selected placed routes: difference between cycle and 2014 cycle

- Placed (Clearing)
- Placed (Firm)
- Placed (Insurance)



AX.7 Placed main scheme applicants from Scotland: A level results day

All Main scheme placed routes (excluding Adjustment): applicants at A level results day

Applicant type	Status	2011	2012	2013	2014	2015
Main scheme	Placed (Clearing)	550	540	540	480	520
	Placed (Firm)	23,020	23,050	24,060	24,970	25,630
	Placed (Insurance)	1,430	1,420	1,200	1,360	1,450
	Placed (Other)	700	510	430	470	460

AX.8 Placed main scheme applicants from Scotland: A level results day

Selected placed routes: difference between cycle and 2014 cycle

Applicant type	Status	2011	2012	2013	2014	2015
Main scheme	Placed (Clearing)	15%	11%	12%	0%	8%
	Placed (Firm)	-8%	-8%	-4%	0%	3%
	Placed (Insurance)	5%	4%	-12%	0%	6%

AX.9 Main scheme applicants placed through adjustment: A level results day

Placed through adjustment: difference between cycle and 2014 cycle

[Analysis on placed by adjustment available from 14 August 2015]

AX.10 Main scheme applicants placed through adjustment: A level results day

Placed through adjustment: applicants at A level results day

[Analysis on placed by adjustment available from 14 August 2015]

AX.11 Main scheme applicants placed through adjustment: A level results day

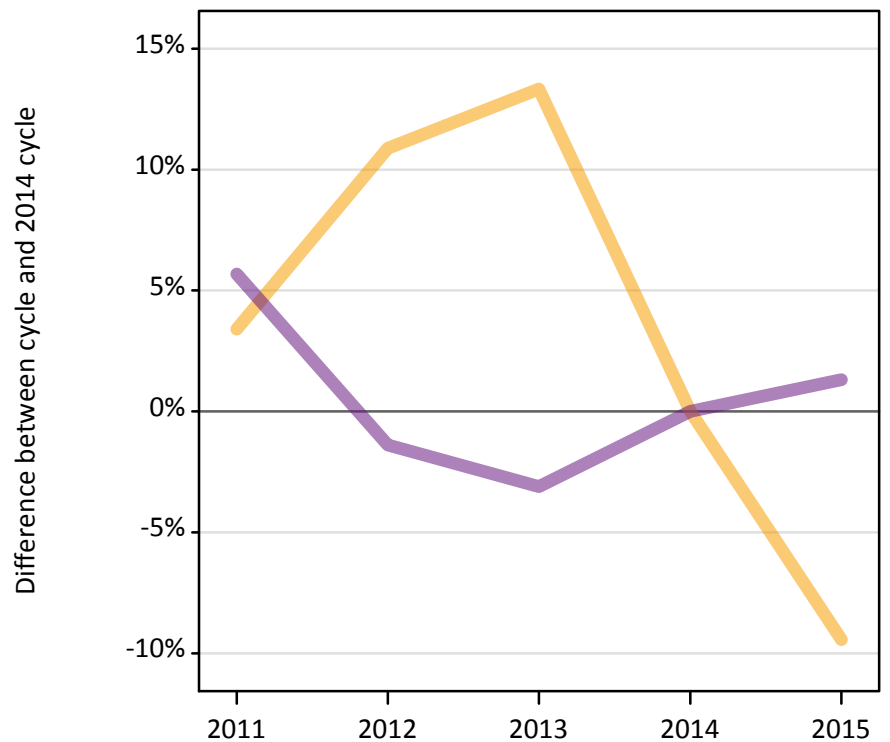
Placed through adjustment: difference between cycle and 2014 cycle

[Analysis on placed by adjustment available from 14 August 2015]

AX.12 Main scheme applicants not currently placed from Scotland: A level results day

Applicants in unplaced states: difference between cycle and 2014 cycle

— Holding offer
— Free to be placed in Clearing



AX.13 Main scheme applicants not currently placed from Scotland: A level results day

Applicants in unplaced states: applicants at A level results day

Applicant type	Status	2011	2012	2013	2014	2015
Main scheme	Holding offer	2,920	3,130	3,200	2,820	2,550
	Free to be placed in Clearing	13,110	12,240	12,020	12,410	12,570

AX.14 Main scheme applicants not currently placed from Scotland: A level results day

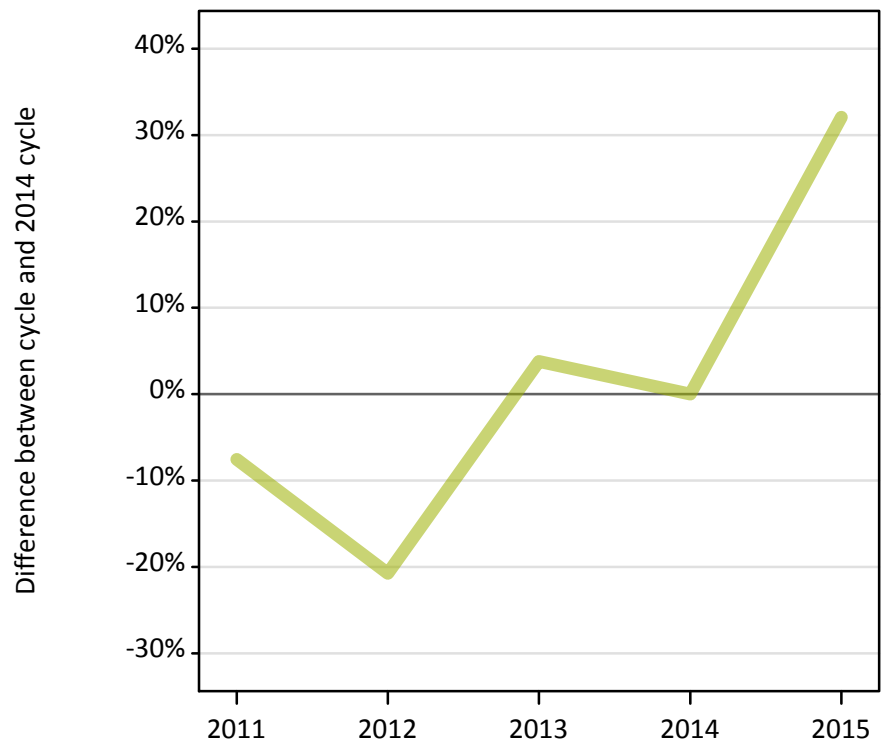
Applicants in unplaced states: difference between cycle and 2014 cycle

Applicant type	Status	2011	2012	2013	2014	2015
Main scheme	Holding offer	3%	11%	13%	0%	-9%
	Free to be placed in Clearing	6%	-1%	-3%	0%	1%

AX.15 Direct to Clearing applicants from Scotland: A level results day

Placed (Direct to Clearing): difference between cycle and 2014 cycle

Placed (Direct to Clearing)



AX.16 Direct to Clearing applicants from Scotland: A level results day

Direct to Clearing A level results day

Applicant type	Status	2011	2012	2013	2014	2015
Direct to Clearing	Placed (Direct to Clearing)	50	40	60	50	70
	Other (Direct to Clearing)	270	310	280	240	340

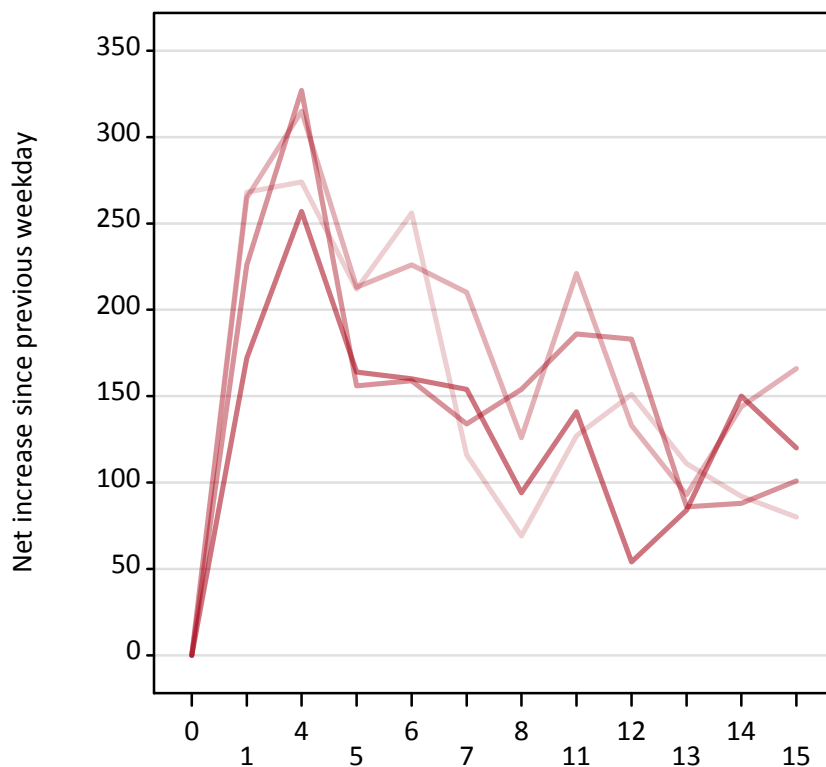
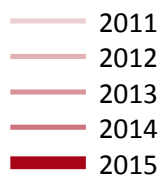
AX.17 Direct to Clearing applicants from Scotland: A level results day

Placed (Direct to Clearing): difference between cycle and 2014 cycle

Applicant type	Status	2011	2012	2013	2014	2015
Direct to Clearing	Placed (Direct to Clearing)	-8%	-21%	4%	0%	32%

AX.18 All Placed: Daily net change (from Scotland)

Net increase since previous weekday (2015 cycle up to A level results day)



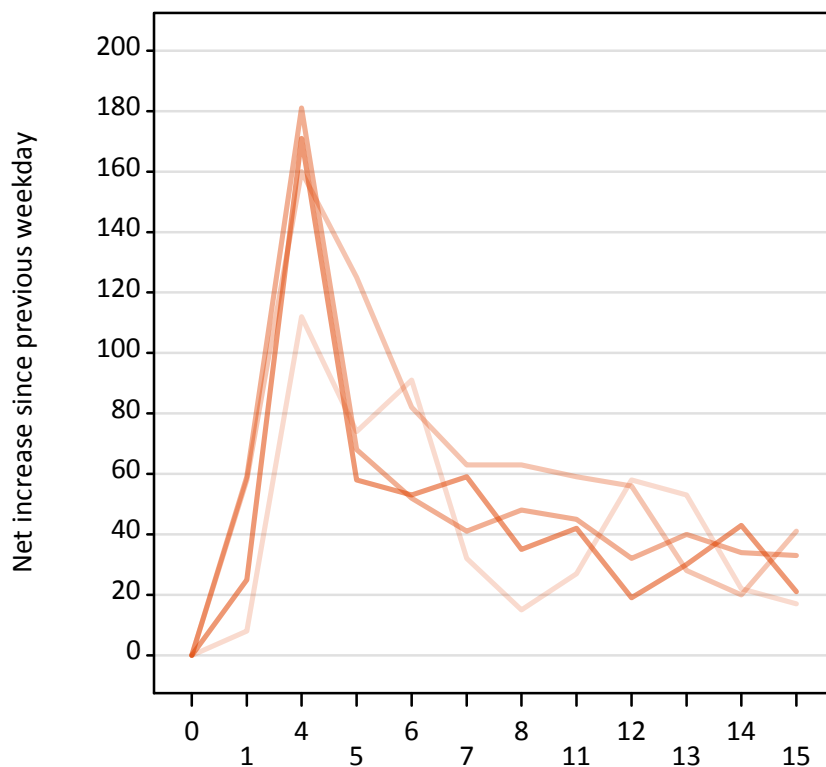
AX.19 All Placed: Daily net change (from Scotland)

Net increase since previous weekday (2015 cycle up to A level results day)

Applicant status, days since A level results day		2011	2012	2013	2014	2015
All Placed	0	0	0	0	0	0
	1	270	270	230	170	
	4	270	320	330	260	
	5	210	210	160	160	
	6	260	230	160	160	
	7	120	210	130	150	
	8	70	130	150	90	
	11	130	220	190	140	
	12	150	130	180	50	
	13	110	90	90	80	
	14	90	140	90	150	
	15	80	170	100	120	

AX.20 Placed through Clearing only: Daily net change (from Scotland)
 Net increase since previous weekday (2015 cycle up to A level results day)

- 2011
- 2012
- 2013
- 2014
- 2015

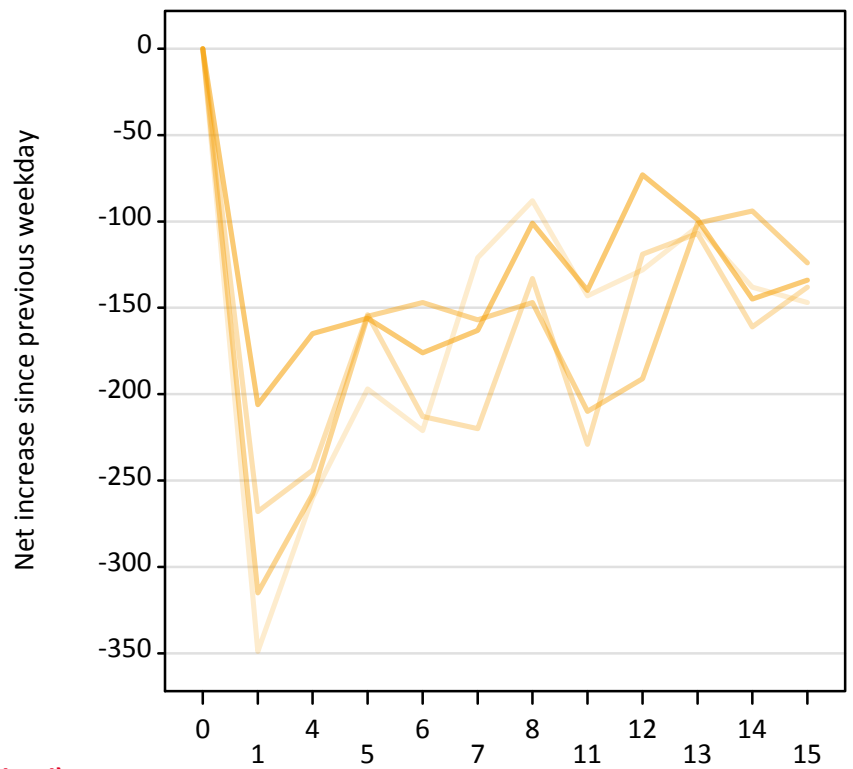
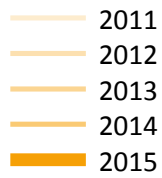


AX.21 Placed through Clearing only: Daily net change (from Scotland)
 Net increase since previous weekday (2015 cycle up to A level results day)

Applicant status, days since A level results day		2011	2012	2013	2014	2015
Placed through Clearing only	0	0	0	0	0	0
	1	10	60	60	30	
	4	110	160	180	170	
	5	70	130	70	60	
	6	90	80	50	50	
	7	30	60	40	60	
	8	20	60	50	40	
	11	30	60	50	40	
	12	60	60	30	20	
	13	50	30	40	30	
	14	20	20	30	40	
	15	20	40	30	20	

AX.22 Holding Offer: Daily net change (from Scotland)

Net increase since previous weekday (2015 cycle up to A level results day)



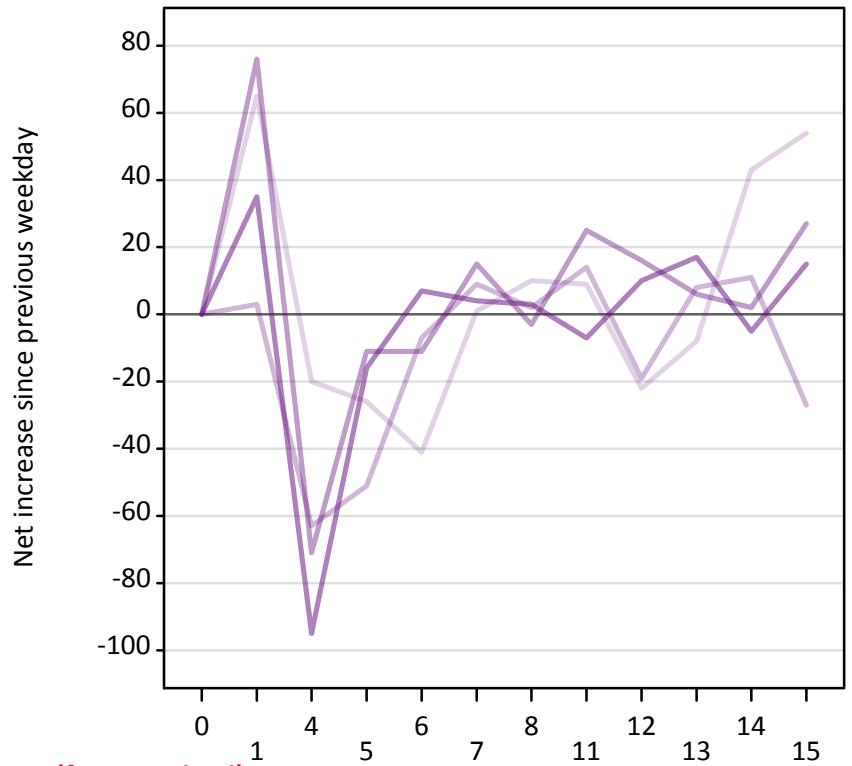
AX.23 Holding Offer: Daily net change (from Scotland)

Net increase since previous weekday (2015 cycle up to A level results day)

Applicant status, days since A level results day		2011	2012	2013	2014	2015
Holding Offer	0	0	0	0	0	0
	1	-350	-270	-320	-210	-210
	4	-260	-240	-260	-170	-170
	5	-200	-150	-160	-160	-160
	6	-220	-210	-150	-180	-180
	7	-120	-220	-160	-160	-160
	8	-90	-130	-150	-100	-100
	11	-140	-230	-210	-140	-140
	12	-130	-120	-190	-70	-70
	13	-100	-110	-100	-100	-100
	14	-140	-160	-90	-150	-150
	15	-150	-140	-120	-130	-130

AX.24 Free to be placed in Clearing: Daily net change (from Scotland)
 Net increase since previous weekday (2015 cycle up to A level results day)

- 2011
- 2012
- 2013
- 2014
- 2015



AX.25 Free to be placed in Clearing: Daily net change (from Scotland)
 Net increase since previous weekday (2015 cycle up to A level results day)

Applicant status, days since A level results day		2011	2012	2013	2014	2015
Free to be placed in Clearing	0	0	0	0	0	0
	1	70	0	80	40	
	4	-20	-60	-70	-100	
	5	-30	-50	-10	-20	
	6	-40	-10	-10	10	
	7	0	10	20	0	
	8	10	0	0	0	
	11	10	10	30	-10	
	12	-20	-20	20	10	
	13	-10	10	10	20	
	14	40	10	0	-10	
	15	50	-30	30	20	