

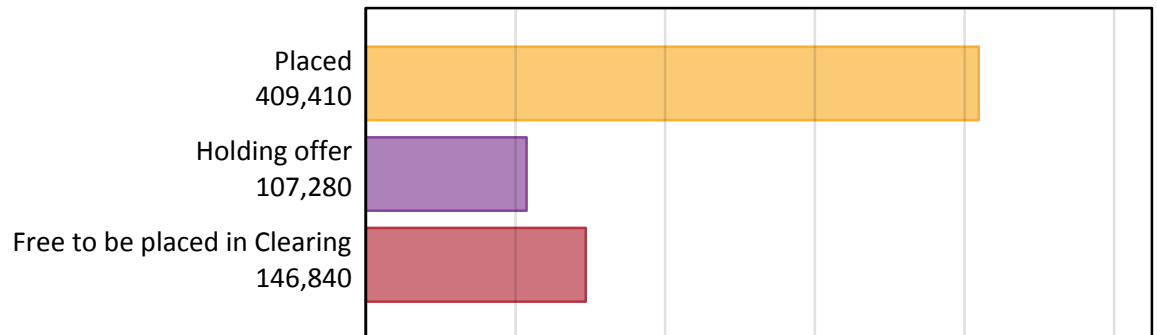
Daily Clearing Analysis: Overview

Analysis at 00:05 on Thursday 13 August 2015 (A level results day - No Scot.X1)

AX.1 Applicants by type and status from all domiciles, 2015 cycle

Applicant type	Status	2015
Main scheme	Placed (Clearing)	3,640
	Placed (Adjustment)	0
	Placed (Firm)	362,420
	Placed (Insurance)	29,720
	Placed (Other)	11,660
	Holding offer	107,280
	Free to be placed in Clearing	146,840
Direct to Clearing	Placed (Direct to Clearing)	1,980
	Other (Direct to Clearing)	8,430
All applicants	Placed	409,410

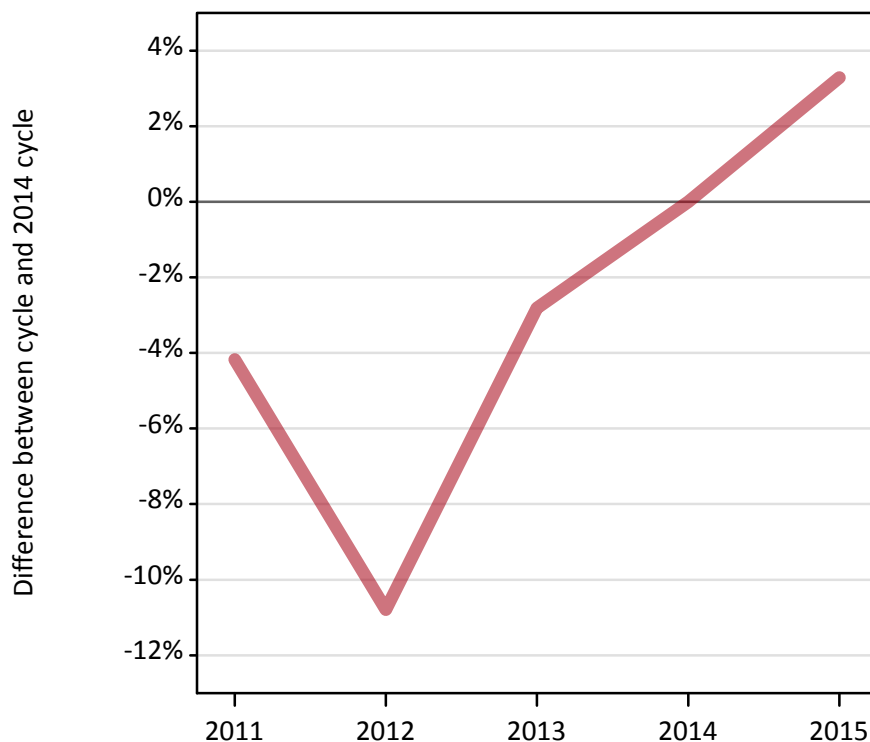
AX.2 Summary of applicants who are placed, holding offers or free to be placed in Clearing (all domiciles)



AX.3 All placed applicants from all domiciles: A level results day

All placed applicants: difference between cycle and 2014 cycle

Placed



AX.4 All placed applicants from all domiciles: A level results day

All placed applicants: applicants at A level results day

Applicant type	Status	2011	2012	2013	2014	2015
All applicants	Placed	379,830	353,600	385,250	396,390	409,410

AX.5 All placed applicants from all domiciles: A level results day

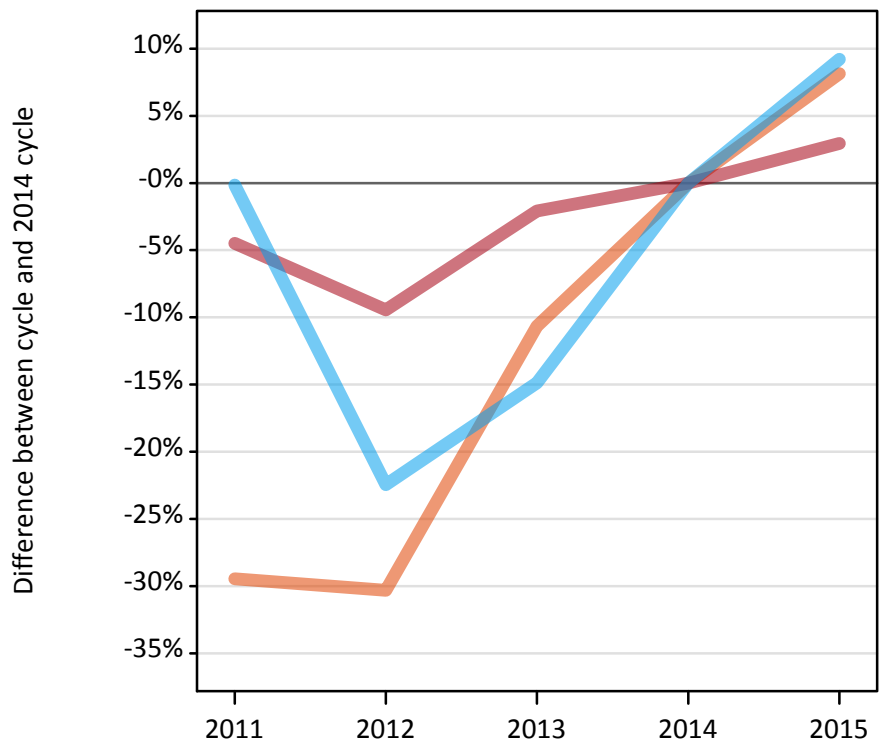
All placed applicants: difference between cycle and 2014 cycle

Applicant type	Status	2011	2012	2013	2014	2015
All applicants	Placed	-4%	-11%	-3%	0%	3%

AX.6 Placed main scheme applicants from all domiciles: A level results day

Selected placed routes: difference between cycle and 2014 cycle

- Placed (Clearing)
- Placed (Firm)
- Placed (Insurance)



AX.7 Placed main scheme applicants from all domiciles: A level results day

All Main scheme placed routes (excluding Adjustment): applicants at A level results day

Applicant type	Status	2011	2012	2013	2014	2015
Main scheme	Placed (Clearing)	2,380	2,350	3,010	3,370	3,640
	Placed (Firm)	336,200	318,790	344,670	352,010	362,420
	Placed (Insurance)	27,170	21,100	23,170	27,210	29,720
	Placed (Other)	13,170	10,170	12,450	12,110	11,660

AX.8 Placed main scheme applicants from all domiciles: A level results day

Selected placed routes: difference between cycle and 2014 cycle

Applicant type	Status	2011	2012	2013	2014	2015
Main scheme	Placed (Clearing)	-29%	-30%	-11%	0%	8%
	Placed (Firm)	-4%	-9%	-2%	0%	3%
	Placed (Insurance)	-0%	-22%	-15%	0%	9%

AX.9 Main scheme applicants placed through adjustment: A level results day

Placed through adjustment: difference between cycle and 2014 cycle

[Analysis on placed by adjustment available from 14 August 2015]

AX.10 Main scheme applicants placed through adjustment: A level results day

Placed through adjustment: applicants at A level results day

[Analysis on placed by adjustment available from 14 August 2015]

AX.11 Main scheme applicants placed through adjustment: A level results day

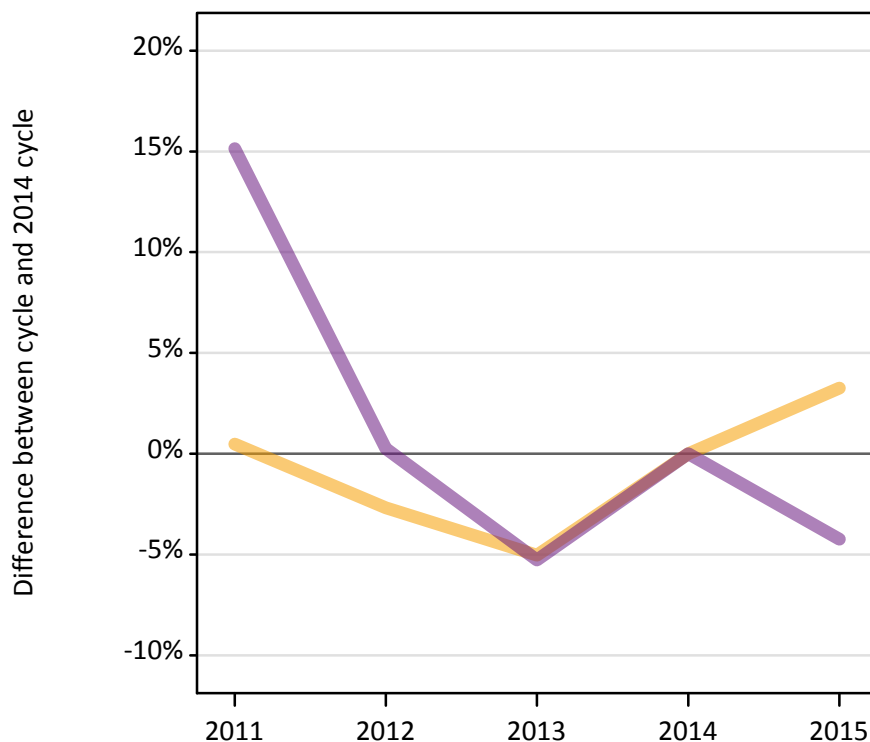
Placed through adjustment: difference between cycle and 2014 cycle

[Analysis on placed by adjustment available from 14 August 2015]

AX.12 Main scheme applicants not currently placed from all domiciles: A level results day

Applicants in unplaced states: difference between cycle and 2014 cycle

— Holding offer
— Free to be placed in Clearing



AX.13 Main scheme applicants not currently placed from all domiciles: A level results day

Applicants in unplaced states: applicants at A level results day

Applicant type	Status	2011	2012	2013	2014	2015
Main scheme	Holding offer	104,390	101,100	98,650	103,890	107,280
	Free to be placed in Clearing	176,550	153,730	145,250	153,340	146,840

AX.14 Main scheme applicants not currently placed from all domiciles: A level results day

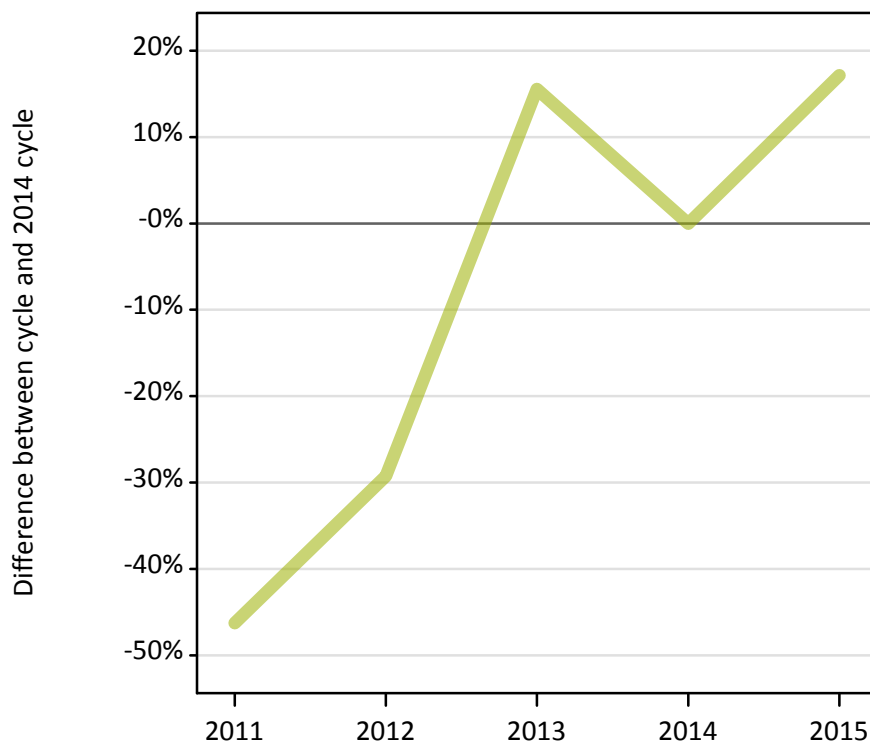
Applicants in unplaced states: difference between cycle and 2014 cycle

Applicant type	Status	2011	2012	2013	2014	2015
Main scheme	Holding offer	0%	-3%	-5%	0%	3%
	Free to be placed in Clearing	15%	0%	-5%	0%	-4%

AX.15 Direct to Clearing applicants from all domiciles: A level results day

Placed (Direct to Clearing): difference between cycle and 2014 cycle

Placed (Direct to Clearing)

**AX.16 Direct to Clearing applicants from all domiciles: A level results day**

Direct to Clearing A level results day

Applicant type	Status	2011	2012	2013	2014	2015
Direct to Clearing	Placed (Direct to Clearing)	910	1,200	1,960	1,690	1,980
	Other (Direct to Clearing)	8,480	7,720	8,620	7,280	8,430

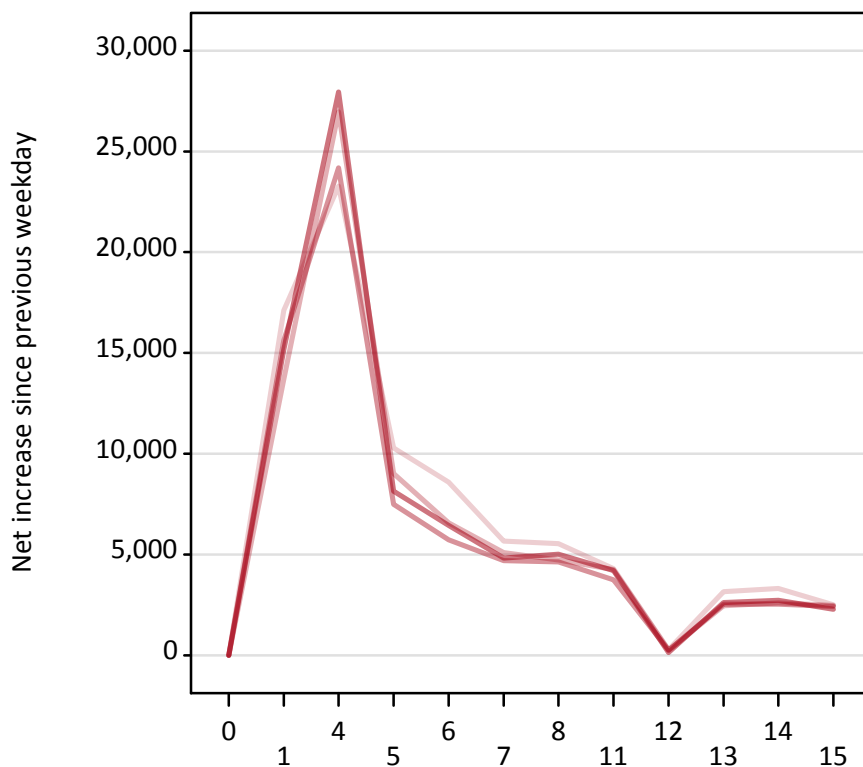
AX.17 Direct to Clearing applicants from all domiciles: A level results day

Placed (Direct to Clearing): difference between cycle and 2014 cycle

Applicant type	Status	2011	2012	2013	2014	2015
Direct to Clearing	Placed (Direct to Clearing)	-46%	-29%	16%	0%	17%

AX.18 All Placed: Daily net change (from all domiciles)

Net increase since previous weekday (2015 cycle up to A level results day)



AX.19 All Placed: Daily net change (from all domiciles)

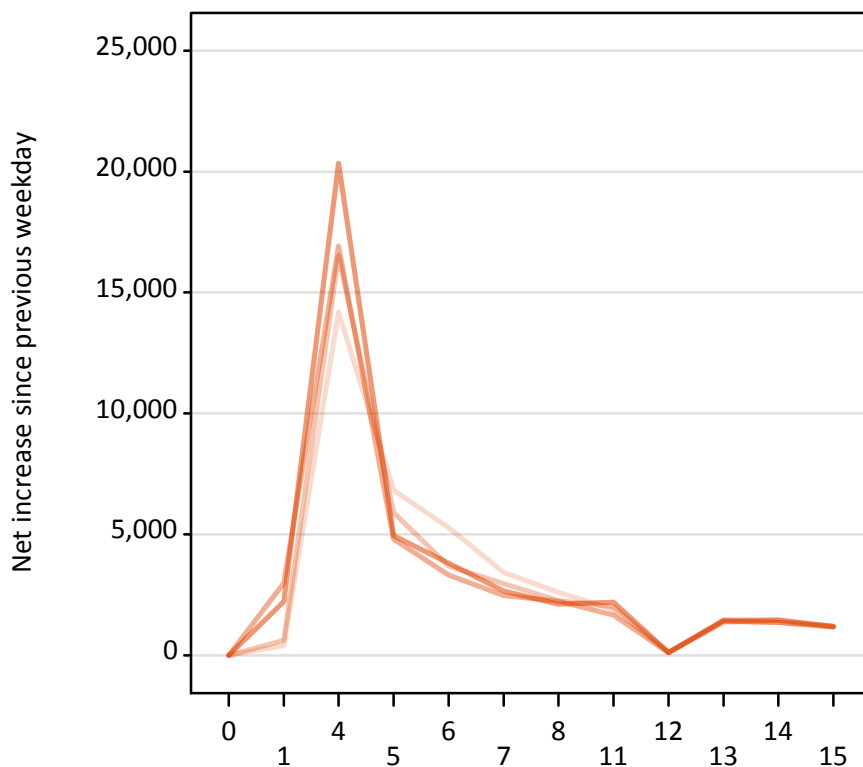
Net increase since previous weekday (2015 cycle up to A level results day)

Applicant status, days since A level results day		2011	2012	2013	2014	2015
All Placed	0	0	0	0	0	0
	1	17,120	13,700	15,630	15,180	
	4	23,280	26,960	24,180	27,960	
	5	10,300	9,020	7,490	8,140	
	6	8,580	6,560	5,720	6,450	
	7	5,670	5,090	4,700	4,830	
	8	5,530	4,730	4,640	5,020	
	11	4,300	4,250	3,740	4,210	
	12	280	260	240	130	
	13	3,150	2,450	2,540	2,620	
	14	3,310	2,610	2,540	2,730	
	15	2,500	2,470	2,420	2,280	

AX.20 Placed through Clearing only: Daily net change (from all domiciles)

Net increase since previous weekday (2015 cycle up to A level results day)

- 2011
- 2012
- 2013
- 2014
- 2015



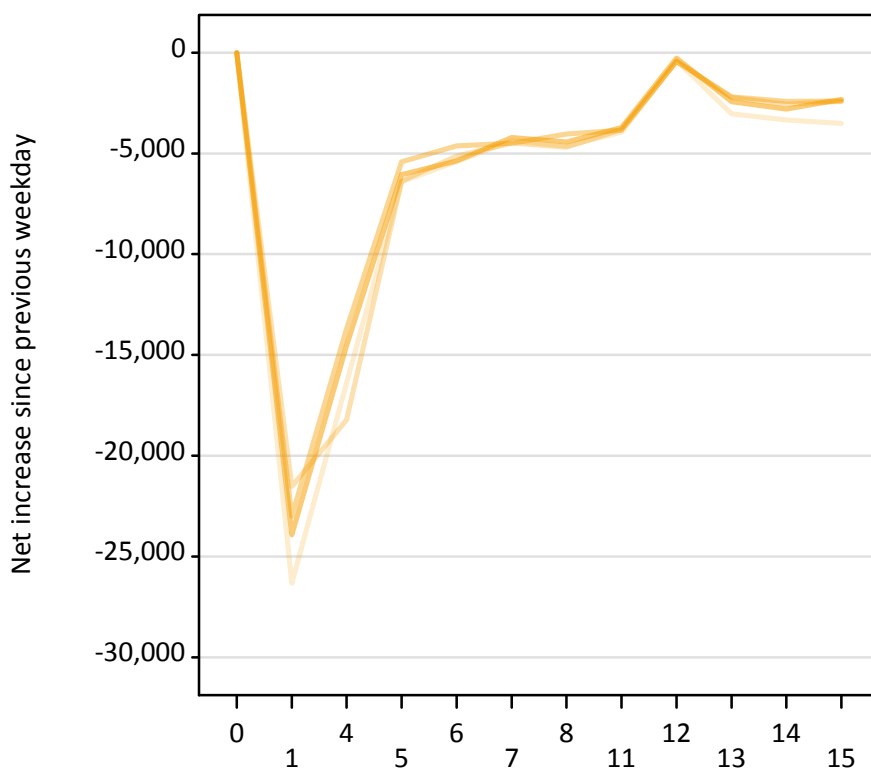
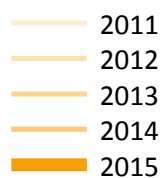
AX.21 Placed through Clearing only: Daily net change (from all domiciles)

Net increase since previous weekday (2015 cycle up to A level results day)

Applicant status, days since A level results day		2011	2012	2013	2014	2015
Placed through Clearing only	0	0	0	0	0	0
	1	410	620	2,980	2,220	
	4	14,190	16,540	16,910	20,340	
	5	6,820	5,900	4,800	4,940	
	6	5,280	3,690	3,320	3,810	
	7	3,420	2,950	2,470	2,650	
	8	2,600	2,260	2,240	2,120	
	11	1,890	2,000	1,670	2,200	
	12	120	130	100	120	
	13	1,340	1,420	1,410	1,450	
	14	1,480	1,360	1,350	1,450	
	15	1,180	1,210	1,170	1,180	

AX.22 Holding Offer: Daily net change (from all domiciles)

Net increase since previous weekday (2015 cycle up to A level results day)



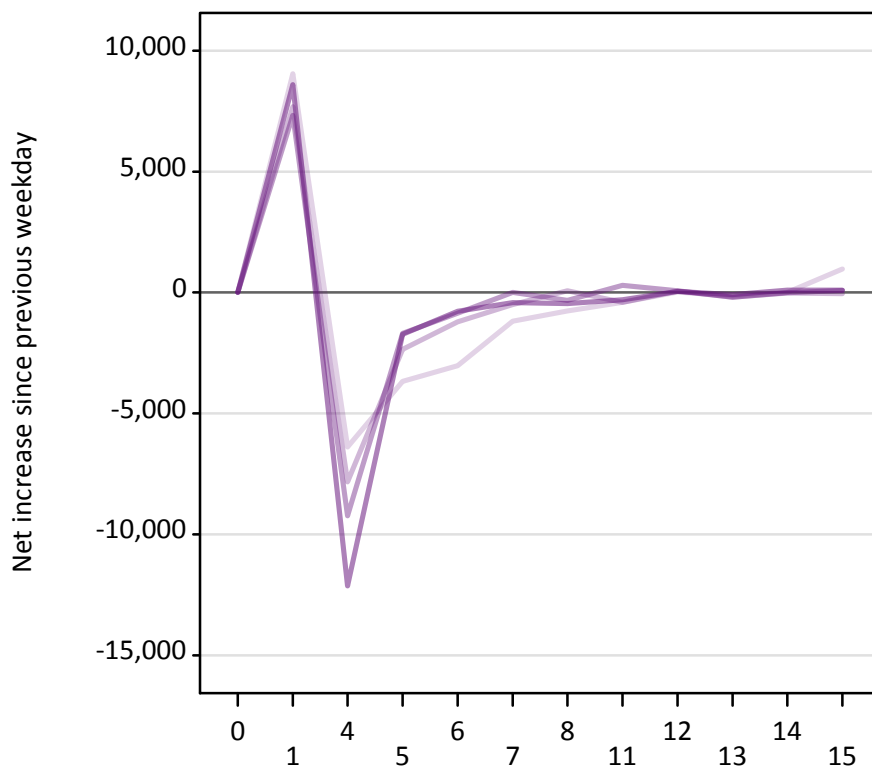
AX.23 Holding Offer: Daily net change (from all domiciles)

Net increase since previous weekday (2015 cycle up to A level results day)

Applicant status, days since A level results day		2011	2012	2013	2014	2015
Holding Offer	0	0	0	0	0	0
	1	-26,320	-21,530	-23,000	-23,930	
	4	-16,390	-18,220	-13,710	-14,530	
	5	-6,400	-6,370	-5,410	-6,050	
	6	-5,410	-5,120	-4,630	-5,370	
	7	-4,370	-4,480	-4,500	-4,200	
	8	-4,650	-4,690	-4,040	-4,430	
	11	-3,940	-3,810	-3,850	-3,720	
	12	-400	-440	-420	-270	
	13	-3,040	-2,220	-2,190	-2,440	
	14	-3,330	-2,560	-2,410	-2,790	
	15	-3,510	-2,420	-2,400	-2,320	

AX.24 Free to be placed in Clearing: Daily net change (from all domiciles)

Net increase since previous weekday (2015 cycle up to A level results day)



AX.25 Free to be placed in Clearing: Daily net change (from all domiciles)

Net increase since previous weekday (2015 cycle up to A level results day)

Applicant status, days since A level results day		2011	2012	2013	2014	2015
Free to be placed in Clearing	0	0	0	0	0	0
	1	9,050	7,690	7,330	8,600	
	4	-6,390	-7,830	-9,230	-12,130	
	5	-3,680	-2,350	-1,690	-1,720	
	6	-3,030	-1,210	-860	-770	
	7	-1,180	-500	0	-420	
	8	-760	70	-330	-450	
	11	-400	-400	290	-300	
	12	20	60	70	40	
	13	-140	-190	-190	-90	
	14	0	-30	-10	100	
	15	970	-40	90	90	